

# FUN PHILATELICALY

## NEWSLETTER

ISSN 1171-6029

December 2017

Produced by the PHILATELIC YOUTH COUNCIL OF N.Z. (Inc.)  
PO Box 2979, Shortland St, Auckland 1140  
www.pycnz.org, email - secretarypyc@vodafone.co.nz

With funding from **COGS**  
Community Organisation  
Grants Scheme

## The World's First Postage Stamp

Do you know why the stamps of Great Britain don't have the country printed on the stamp? This is because Great Britain was the first country in the world to issue a stamp to show postage had been paid before a letter was delivered.

On 6th May 1840, the first stamps were issued, printed in black with a denomination of one penny. This was for a letter not weighing more than ½ ounce, and a few days later the Twopenny Blues came into use for letters weighing ½ - 1 ounce.



Both were the same design showing Queen Victoria. The stamps were a huge success and the printers had to work day and night to build up stocks and maintain supplies. They produced an average of about six million 1d blacks each month. Although it was in use for less than a year, because of the millions which were printed they are not very scarce. Nevertheless many collectors want an example of the first stamp.



A rare block of Penny Blacks showing the price per row or sheet in the selvage

The mark used to cancel Penny Blacks and Twopenny Blues was a red Maltese cross. This usually fell on the centre of the stamp, unlike modern cancellations. It was possible



Maltese cross cancellation

to wash the red cross cancellation off and use the stamp again, so the cancellation colour was changed to black. Then it no longer showed up on the black stamp, so in 1841 the Penny Black was withdrawn and replaced by the Penny Red.

With the Twopenny Blue these two stamps remained in use until 1880.

People collected stamps from the time they first appeared but had no idea they might become valuable and did not keep them in good condition.

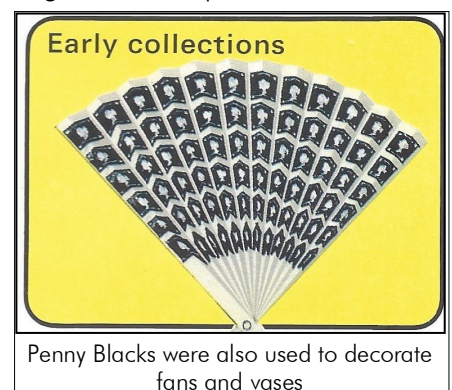
Thousands of Penny Blacks were used to decorate fans and vases, one lady even covered a wall in her house with them.



The Post Office people were a bit worried about this. They thought she was planning to use the stamps again. But no, she was very proud of her bedroom and simply wanted to wallpaper her bedroom wall with stamps.

You probably know that many old paintings are valuable. The same goes for stamps.

Today a reasonably good used penny black would cost you about one hundred to one hundred and fifty dollars.



Penny Blacks were also used to decorate fans and vases

## The 150th Anniversary of the First Christmas In New Zealand

The 1964 Christmas Stamp celebrates the 150th anniversary of the first Christmas service held in New Zealand.

The Rev. Samuel Marsden was the 'founding father' of the Missionary Service in New Zealand. Through his enthusiasm the British Church Missionary Society settlements were established in Northland.

The first settlement was set up in the Bay of Islands in 1814 by the Rev. Samuel Marsden, who was a senior chaplain to the convicts of New South Wales. Marsden arrived from Australia on the 'Active' a few days before Christmas and made friends with the local Maori Chiefs. One of these, Ruatara, had prepared for a service in an enclosed area of about half an acre.



At 10 o'clock on Christmas morning Marsden left the 'Active' with the entire ship's company. When the Europeans had occupied the enclosure, the three Maori chiefs marched in with their warriors behind them, and formed a circle behind the Europeans.

Marsden preached from the text 'Behold I bring you glad tidings of great joy'

## PYC Inter Club Competition 2017



This year's winners was once again the Hutt Valley Junior Stamp Club, Congratulations

## Amy's reward from NIPEX

At the NIPEX exhibition this year I was very surprised to win the overall prize of a \$500 voucher from Auckland City Stamps. I talked to David Holmes about the exhibit I would be working on at Stamp Camp in the July school holidays which was on the NZ 1975 rose definitives and thought it would be nice to get an item to add this.

I was emailed some scans of items and I selected an imperf pair of the 3c value. David was very generous and gave me a cash cheque for the balance.



Among my sources, I have copies of Philatelic News published by Peter Oldham Ltd. There were several articles about the 3c imperforate sheets. In April 1976, it was first reported that this was from a supply of sheets removed from the premises of Harrison & Son Ltd. and that an ex employee had been arrested in connection with the matter. The NZ Stamp Dealers Association (NZSDA) wrote to the printers seeking confirmation and received a reply that they had no knowledge of any NZ stamps being stolen from their factory and their records show no stamps are missing. Investigations continued!

Eventually the NZSDA proved that the stamps were genuinely issued, confirmed by the NZ police that they had established that the stamps were purchased from a NZ Post Office. Every known imperforate 3c stamp was traced and it was found that there were only 4 sheets of 100 stamps each.

This item now proudly sits in my exhibit which I entered into Royalpex in November. I would like to thank the Auckland Philatelic Society for organising an exhibition, the judge who picked my entry as the winner and Auckland City Stamps for offering such a generous prize.



Amy and David Holmes of Auckland City Stamps

# Congratulations

The level of achievement at Royalpex in Hamilton was outstanding as the results below show.

One of the judges was of international level from Australia, so well done everybody, you can all be very proud of your effort.

<b>National Class</b>	SP = Special prize
Annalise Smith	Large Vermeil + SP
Andrew Sknar	Large Silver
Conor Smith	Vermeil
Rose McTaggart	Vermeil + SP
Conor Smith	Large Silver
Timothy Brown	Vermeil + SP
Disha Bobby	Silver Bronze
Ryan Smith	Large Vermeil + SP
Lachlan Smith	Gold + SP
Amy Rosenfeldt	Gold + SP
Isabella Beach	Vermeil + SP

<b>Development Class</b>	
Emma Rowe	Vermeil + SP
Olivia Cheng	Large Silver + SP
Samantha Rowe	Vermeil + SP
Arthur Koutsaeuko	Silver + SP



Sue Claridge and Karen Jeffrey at the Youth Court Stand at Royalpex in Hamilton

# News Release Stamp Camp 2018



## Wigram Skies Camp

The Christchurch Cadet Training Centre in Wigram, Christchurch is the venue for the 2018 stamp camp which will be held in the second week of the April school holidays from Sunday 22nd – Saturday 28th. It will be a fun filled week of stamp collecting and other activities for 10 – 18 year olds.

There will be opportunities to learn more about the collecting process and how to put together a stamp exhibit. There will be a number of guest speakers plus some off site mystery trips.

The cost of the camp is \$250 per person. \$100 deposit is payable with registration and there is a 10% discount if the camp fee is paid in full before 31st January 2018.

For further information and a registration form email [karenjanejeffrey@outlook.com](mailto:karenjanejeffrey@outlook.com)

## DID YOU KNOW

You may have in your collection some South African stamps with Kenya, Uganda and Tanganyika printed on them, and the value in cents. If you have put them among your Kenya stamps, you are quite right, of course, but why were South African stamps used in Kenya?

**Answer** In WWII Kenya's stamps didn't arrive from England due to bombs having fallen on the printing factory, so South African stamps were surcharged and used until their own stamps arrived.

## HIDDEN MESSAGE

Can you decipher this coded message?

Use the grid to help you.

19 12 1 1 10 \*

14 19 3 20 4 5 24 12 4 \*

17 3 26 24 \*

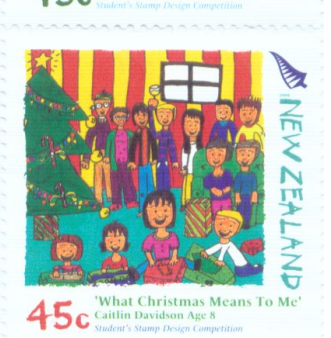
17 6 25 \* 1 19 20 23 12 5 16 23 10

A	B	C	D	E	F	G	H	I	J	K	L	M
12	13	14	15	16	17	18	19	20	21	22	23	24
N	O	P	Q	R	S	T	U	V	W	X	Y	Z
25	26	1	2	3	4	5	6	7	8	9	10	11



This photo is of Esther Downs from Pukekohe Juniors working on her club one page competition

# CHRISTMAS WORD PUZZLE



K R A K O S U M M E R H O L I D A Y Z G  
W C D M R X O B K C A L B C L E A N W A  
M X Z A J K O M A A X L E E G T O N Q Q  
Q Q G R E E M S I R E E Q V P A G E S C  
H A C Y M Z L L D U B T N U O M C I N S  
I S T A R V A E L R E E N I S D C E W R  
S I W N S K C U J S S K Q J O J W S I E  
T V C D L L O V W D S G L U O Z O Q W W  
S M V J E S U S C H R I S T E E O S L O  
A Y H O B G C R D R G P M A V P D M U L  
E T Z S U G C U T M R D L H I T P S I F  
F K J E F A M I L Y G A T H E R I N G A  
L B Y P I C N I C S N G Y S E U G O N W  
A W N H F I V G J D N L Y T D O E D A A  
N C Z C R O M I F E D P A C K E O J H K  
O V X G M Y E E N I P T L G D Z N U B U  
I V C R L L R V W D S G L Q T Z L Q W T  
T M V L I N W E A T B O X W R E W S L U  
I Y H Z B A B Y J E S U S P E P S M U H  
D T Z A U G C U T M R D W I S E M E N O  
A K J R F Y T R E F E R E N S E S D G P  
R B Y R K S D R E H P E H S E U G O L A  
T W N V F I V G J W N L Y T D O L D N E

Our word puzzle in this newsletter has hidden Christmas theme words, good luck. Remember the words can go backwards or diagonally across.

- |                  |                    |
|------------------|--------------------|
| Baby Jesus       | Picnic             |
| Barbeque         | Pohutukawa Flowers |
| Dessert          | Shepherds          |
| Family Gathering | Star               |
| Hangi            | Summer holiday     |
| Jesus Christ     | Traditional Feast  |
| Mary and Joseph  | Wise Men           |
| New Zealand Fern | Wood Pigeon        |

