

**Mouse Anti-MCP1/CCL2 [1A7B8]: MC0378**

**Intended Use:** For Research Use Only

**Description:** This gene is one of several cytokine genes clustered on the q-arm of chromosome 17. Cytokines are a family of secreted proteins involved in immunoregulatory and inflammatory processes. The protein encoded by this gene is structurally related to the CXC subfamily of cytokines. Members of this subfamily are characterized by two cysteines separated by a single amino acid. This cytokine displays chemotactic activity for monocytes and basophils but not for neutrophils or eosinophils. It has been implicated in the pathogenesis of diseases characterized by monocytic infiltrates, like psoriasis, rheumatoid arthritis and atherosclerosis. It binds to chemokine receptors CCR2 and CCR4.

**Specifications:**

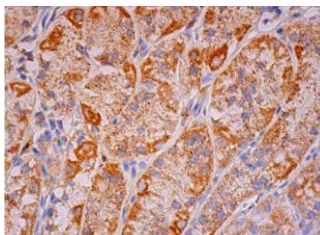
Clone: 1A7B8  
 Source: Mouse  
 Isotype: IgG1k  
 Reactivity: Human  
 Immunogen: Recombinant human MCP-1  
 Localization: Cytoplasm, secreted  
 Formulation: Antibody in PBS buffer pH7.4, containing BSA and ≤ 0.09% sodium azide (NaN<sub>3</sub>)  
 Storage: Store at 2°- 8°C  
 Applications: IHC, IF, IP, WB  
 Package:

Description	Catalog No.	Size
MCP1/CCL2 Concentrated	MC0378	1 ml

**IHC Procedure\*:**

Positive Control Tissue: Breast invasive ductal carcinoma  
 Concentrated Dilution: 50-200  
 Pretreatment: Citrate pH6.0 or EDTA pH8.0, 15 minutes using Pressure Cooker, or 30-60 minutes using water bath at 95°-99°C  
 Incubation Time and Temp: 30-60 minutes @ RT  
 Detection: Refer to the detection system manual

\* Result should be confirmed by an established diagnostic procedure.



FFPE human upper stomach stained with anti-MCP1 using DAB showing cytoplasmic staining of glandular cells

**References:**

1. Infection of endotheliotropic human cytomegalovirus of trabecular meshwork cells. Shimizu D, et al. Jpn J Ophthalmol. Nov;62(6):667-676, 2018.
2. Lipocalin 2 Suppresses Ocular Inflammation by Inhibiting the Activation of NF-κβ Pathway in Endotoxin-Induced Uveitis. Tang W, et al. Cell Physiol Biochem. 46(1):375-388, 2018.
3. Distinct CD40L receptors mediate inflammasome activation and secretion of IL-1β and MCP-1 in cultured human retinal pigment epithelial cells. Bian ZM, et al. Exp Eye Res. May;170:29-39, 2018.

Doc. 100-MC0378  
Rev. A