

UNIT # 3406TA OWNER: \_\_\_\_\_  
 LOCATION: \_\_\_\_\_ PACKAGER: DOS RIOS  
 ENGINE MAKE: CAT MODEL: G3406TA  
 S/N: \_\_\_\_\_ H.P. \_\_\_\_\_  
 NOTES: \_\_\_\_\_

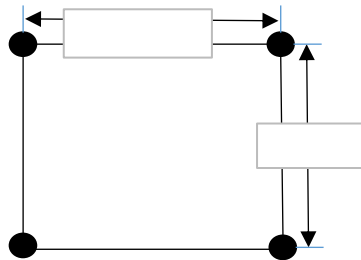
GEAR HEAD MFGR: \_\_\_\_\_ MODEL: \_\_\_\_\_ S/N: \_\_\_\_\_  
 RATIO: \_\_\_\_\_ H.P. \_\_\_\_\_ RPM: \_\_\_\_\_

PISTON #		CAM #		TURBO #	
PTO:		MODEL:		S/N:	
HEAT EXCHANGER:		RADIATOR:			

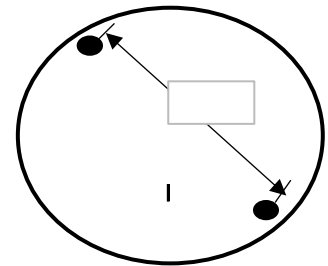
**ENGINE INFO**

BORE	5.4"	STROKE	6.5	
OIL FILTER	P554005	VALVE LASH	In: 15	Exh: 40
AIR FILTER	P181108	TIMING	20	DEGREES BTDC
SPARK PLUGS	NGK 5115 (6)	ANNUNCIATOR	MURPHY TATTLE TAIL	
COIL	ALT 501061	CATALYST		
IGNITION	GAC IMC200-6	MUFFLER		
STARTER	ELECT	FLYWHEEL SAE #		
ENGINE FAN BELT				
GOVERNOR BELT				
WATER PUMP BELT	BX60 (2)			
WATER PUMP	FM-1X2-6			
WATER FILTER	N/A			
ALTERNATOR	9490HD X 1			
AFRC				
BATTERY	2 12V			
GOVERNOR CONTROLLER				
GOVERNOR BODY				

ADAPTER PLATE BOLT CIRCLE



ADAPTER PLATE BOLT CIRCLE



DRIVE LINE LENGTH	
U-JOINT OVERALL WIDTH	
U-JOINT CAP O.D.	

UPPER RADIATOR HOSE	
LOWER RADIATOR HOSE	

AUX WATER PUMP	
MODEL	
SIZE	
S/N	
MAX PSI	
MAX RPM	
BELTS	

NOTES \_\_\_\_\_  
 \_\_\_\_\_  
 \_\_\_\_\_  
 \_\_\_\_\_  
 \_\_\_\_\_  
 \_\_\_\_\_  
 \_\_\_\_\_