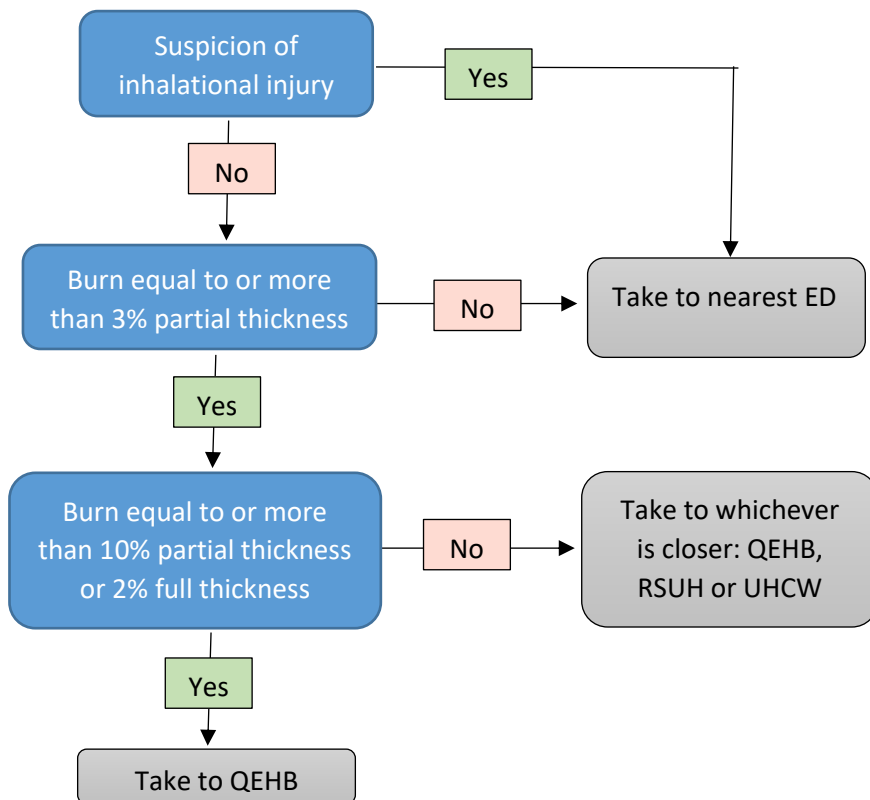


Publication: Pre-hospital triage criteria for burns patient destination
Description: Flowchart to aid decision making
Publication date: February 2019
Publication ref: No. 5
Author: Midlands Trauma and Burns Networks
Circulation: WMAS, Midlands Trauma and Burns Network Providers
Review date: February 2021
Superseded document(s):
Contact details for further information: Midlands Critical Care, Trauma and Burns Networks 15 Frederick Road Birmingham B15 1JD www.mcctn.org.uk
Document status: Whilst this document may be printed, it cannot be controlled, the electronic version posted on MCCTN website is the controlled document.

Pre-hospital triage criteria for burns patient destination

Queen Elizabeth Hospital Birmingham (QEHB) and Birmingham Children's Hospital (BCH) are the regional burns centres for adults (>16) and paediatrics (<16) respectively. This flowchart is designed to help pre-hospital practitioners make the right decision about hospital destination for isolated burns. **Where patients have a combination of burns and other traumatic injuries, the trauma desk should be called for advice as to whether this flowchart, or the major trauma triage tool, should be followed. Note: If patient is RSI'd take to the regional burn centre as the airway is secured.**

Adults (≥16)



Children (<16)

