

Rabbit Anti-CD99 [EP8]: RM0057

Intended Use: For Research Use Only

Description: CD99 is a transmembrane glycoprotein, also known as MIC2. It is involved in T cell adhesion, leukocyte migration and differentiation of primitive neuroectodermal cell. CD99 labels lymphocyte, ovarian granulosa cells, pancreatic islet cells, sertoli cells, CNS ependymal cells and endothelial cells. CD99 has been useful in diagnosis of Ewing's sarcoma, sex cord-stromal tumor, endocrine tumor of pancreas. Additionally, it is found in a subset of other tumors including lymphoblastic lymphoma, breast carcinoma and other malignancies.

Specifications:

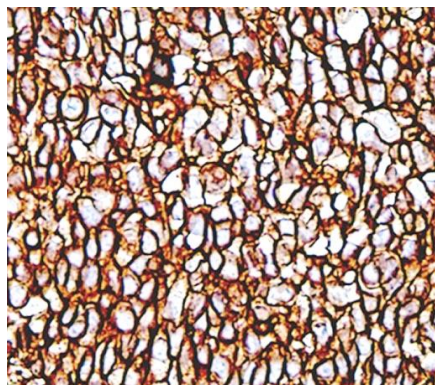
Clone: EP8
Source: Rabbit
Isotype: IgG
Reactivity: Human
Localization: Membrane, cytoplasm
Formulation: Antibody in PBS pH7.4, containing BSA, glycerol, and $\leq 0.09\%$ sodium azide (NaN₃).
Storage: Store at 2°- 8°C. For longer periods of storage, store at -20°C. Avoid repeat freeze-thaw cycles
Applications: IHC
Package:

Description	Catalog No.	Size
CD99 Concentrated	RM0057	1 ml

IHC Procedure*:

Positive Control Tissue: Tonsil
Concentrated Dilution: 50-200
Pretreatment: Citrate pH6.0, 15 minutes using Pressure Cooker, or 30-60 minutes using water bath at 95°-99°C
Incubation Time and Temp: 30-60 minutes @ RT
Detection: Refer to the detection system manual

* Result should be confirmed by an established diagnostic procedure.



FFPE human tonsil stained with anti-CD99 using DAB