

# Coastal Collection

*New Era*  
BUILDING SYSTEMS





## Designed for Shore

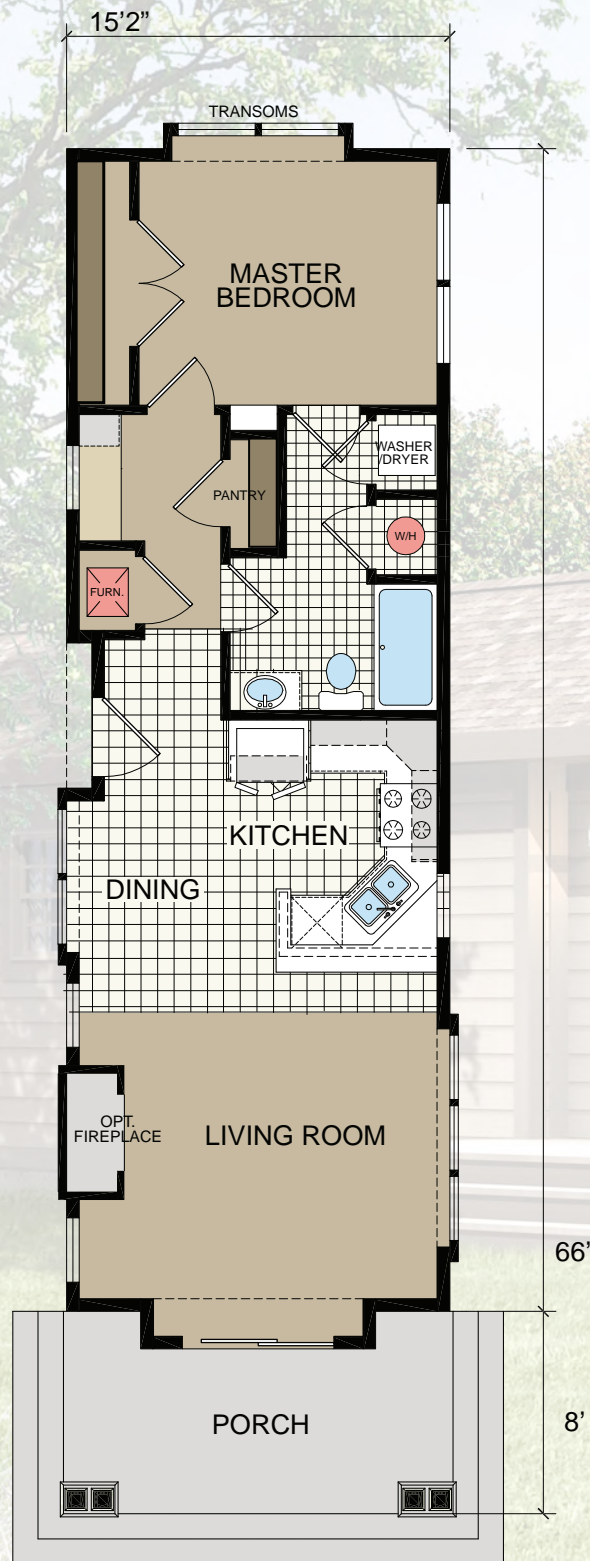
Coastal living is a unique and wonderful lifestyle. The homes of the Coastal Collection were individually designed to enrich life near the shore. Whether you are relaxing or entertaining, these open and flowing floorplans are perfectly suited for casual living. With gathering rooms, gourmet kitchens, master suites and ample storage, each design will enhance your life on the coast. Select the plan that best fits your needs and taste, open the window, sit back, relax and enjoy the refreshing ocean air.

## Built for Life

Each of the Coastal Collection homes are constructed using our state of the art modular techniques. With additional fastening and structural members, they are engineered to provide the utmost in safety and energy efficiency. Each home is built by our skilled craftsmen under the supervision of our continuous quality control process to ensure we're providing you our best.







# Antietam



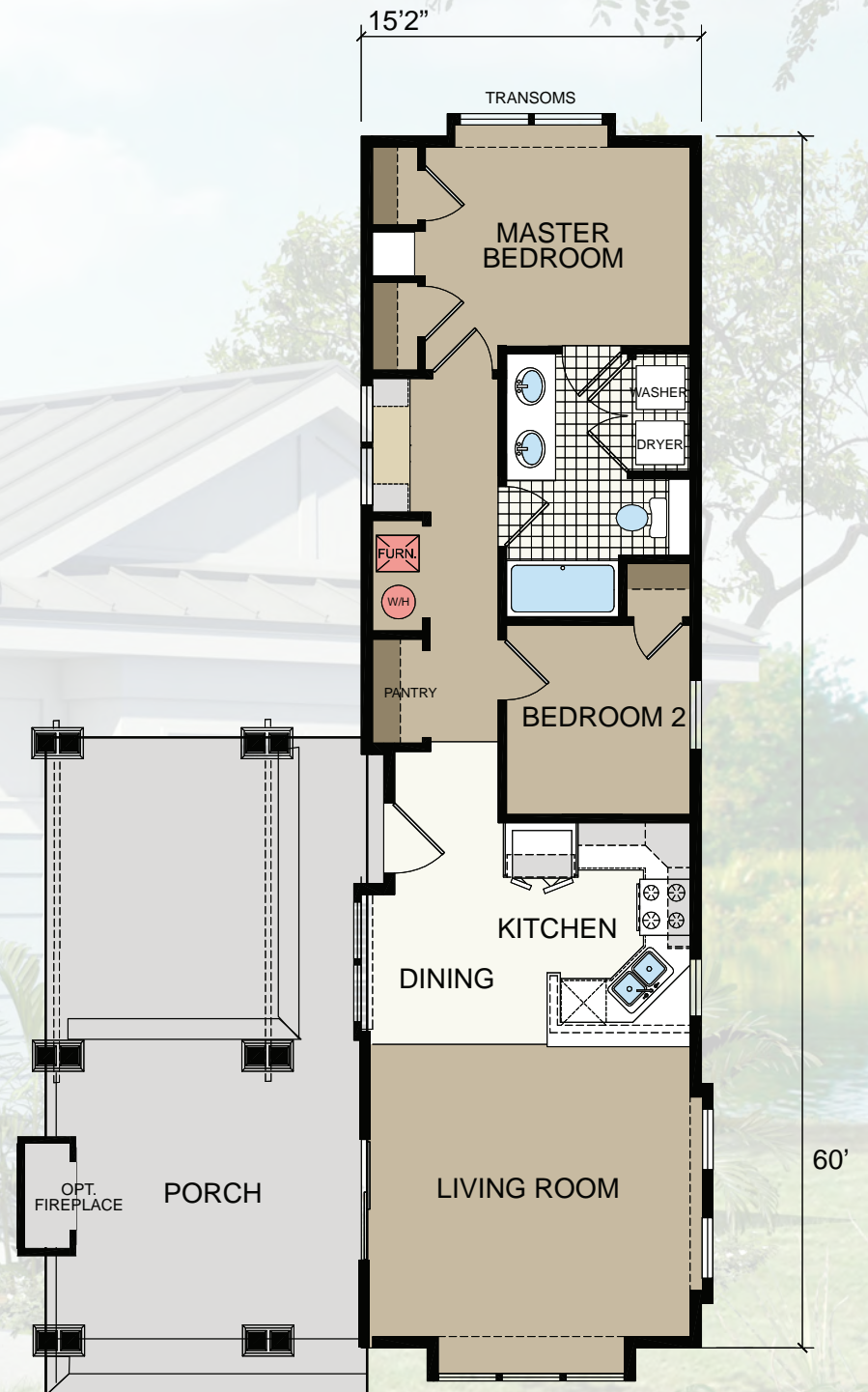
16' x 56' • 1 Bed • 1 Bath • 849 Sq. Ft.



# Seneca

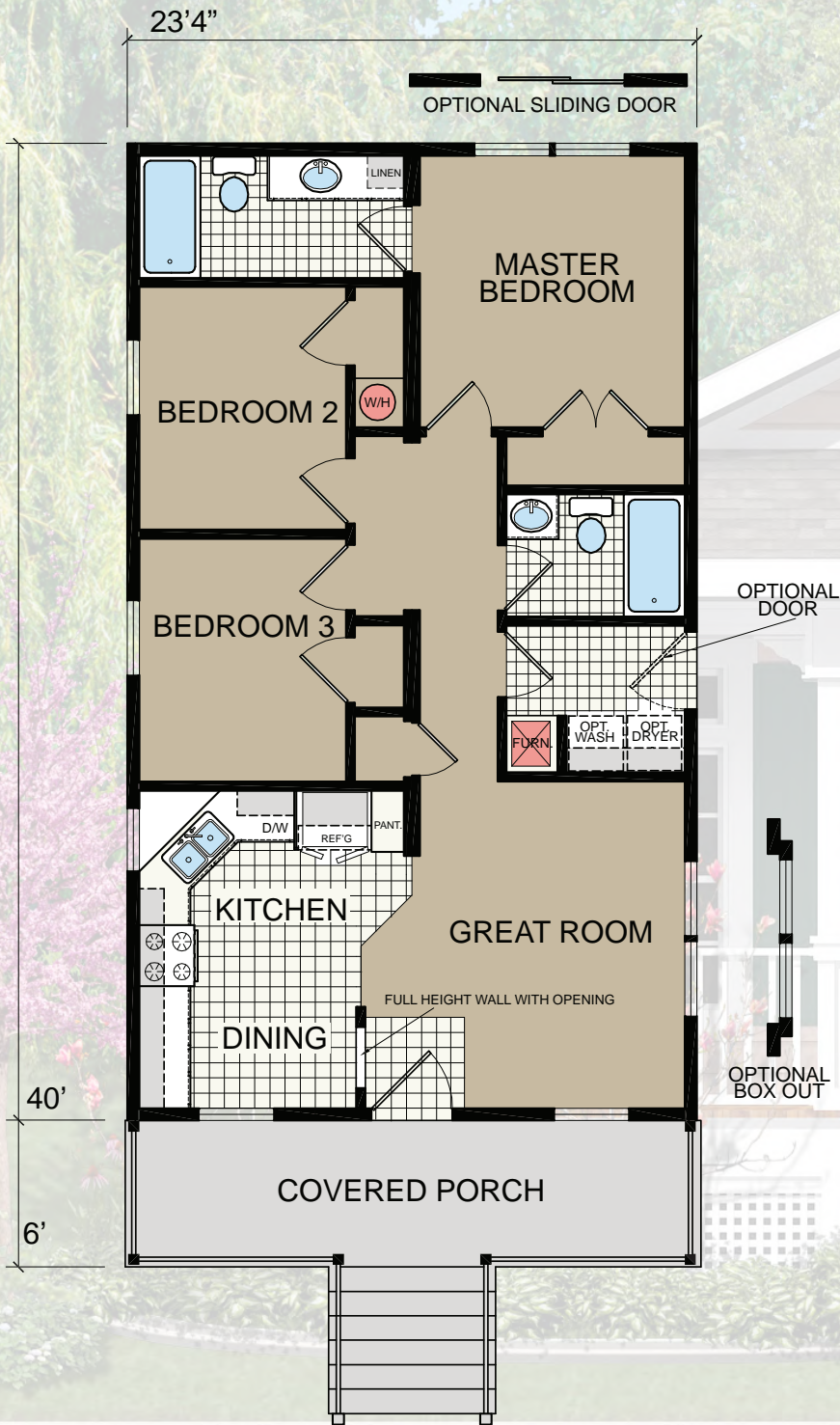


16' x 60' • 2 Beds • 1 Baths • 910 Sq. Ft.





# Sandstone



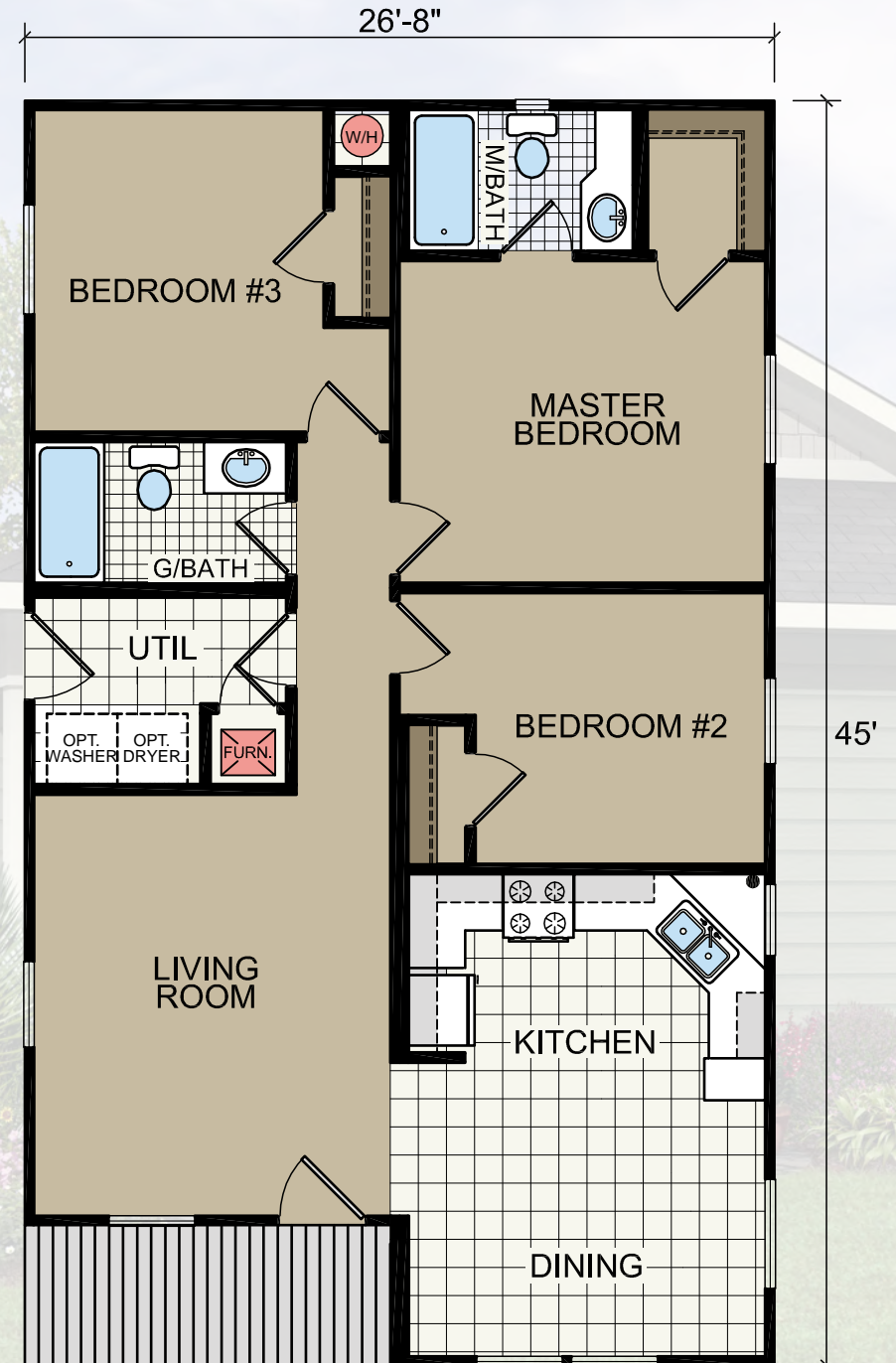
24' x 40' • 3 Beds • 2 Baths • 933 Sq. Ft.



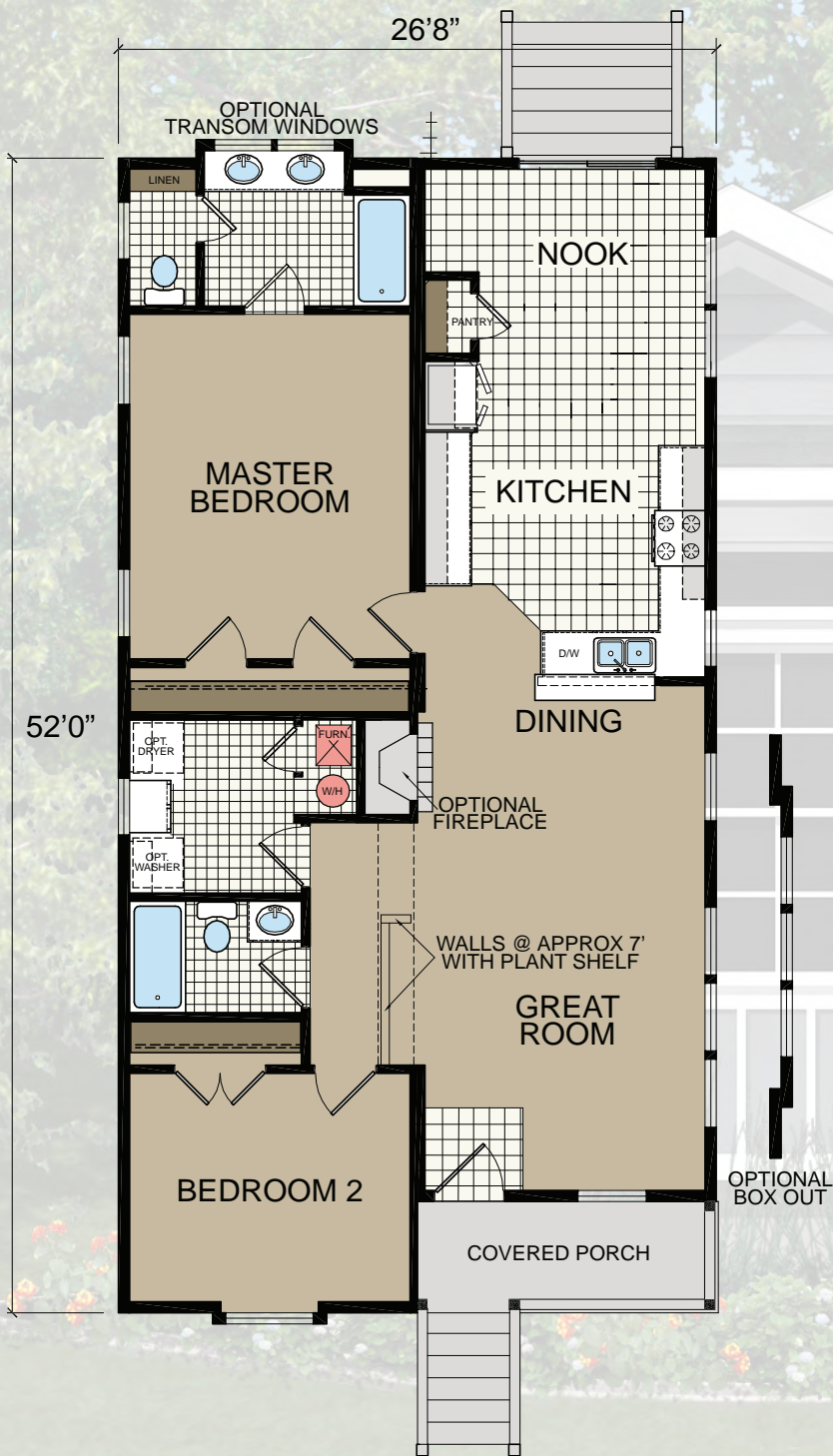
# Savannah



28' x 45' • 3 Beds • 2 Baths • 1,133 Sq. Ft.







# Edinbrooke



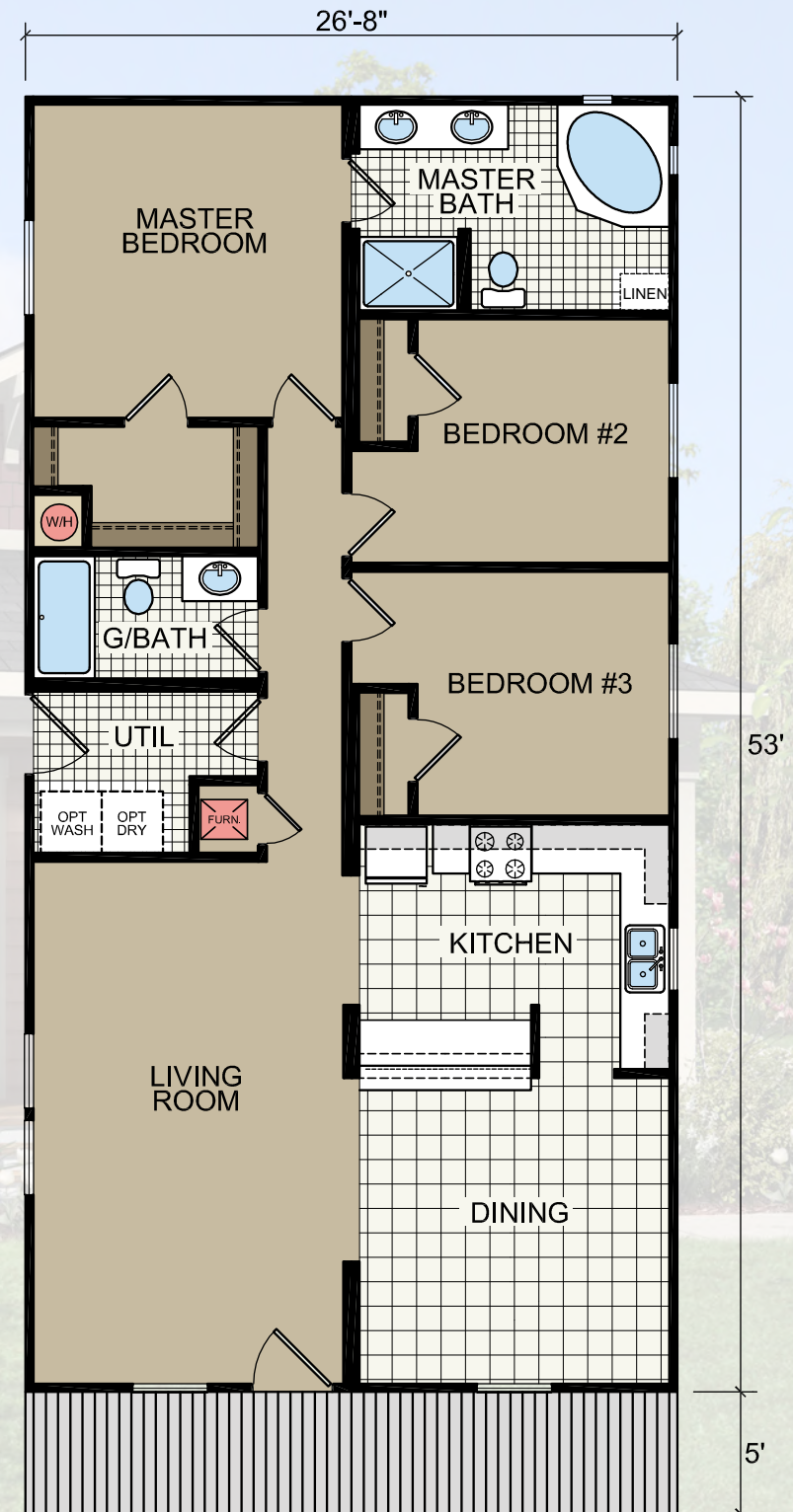
28' x 52' • 2 Beds • 2 Baths • 1,320 Sq. Ft.



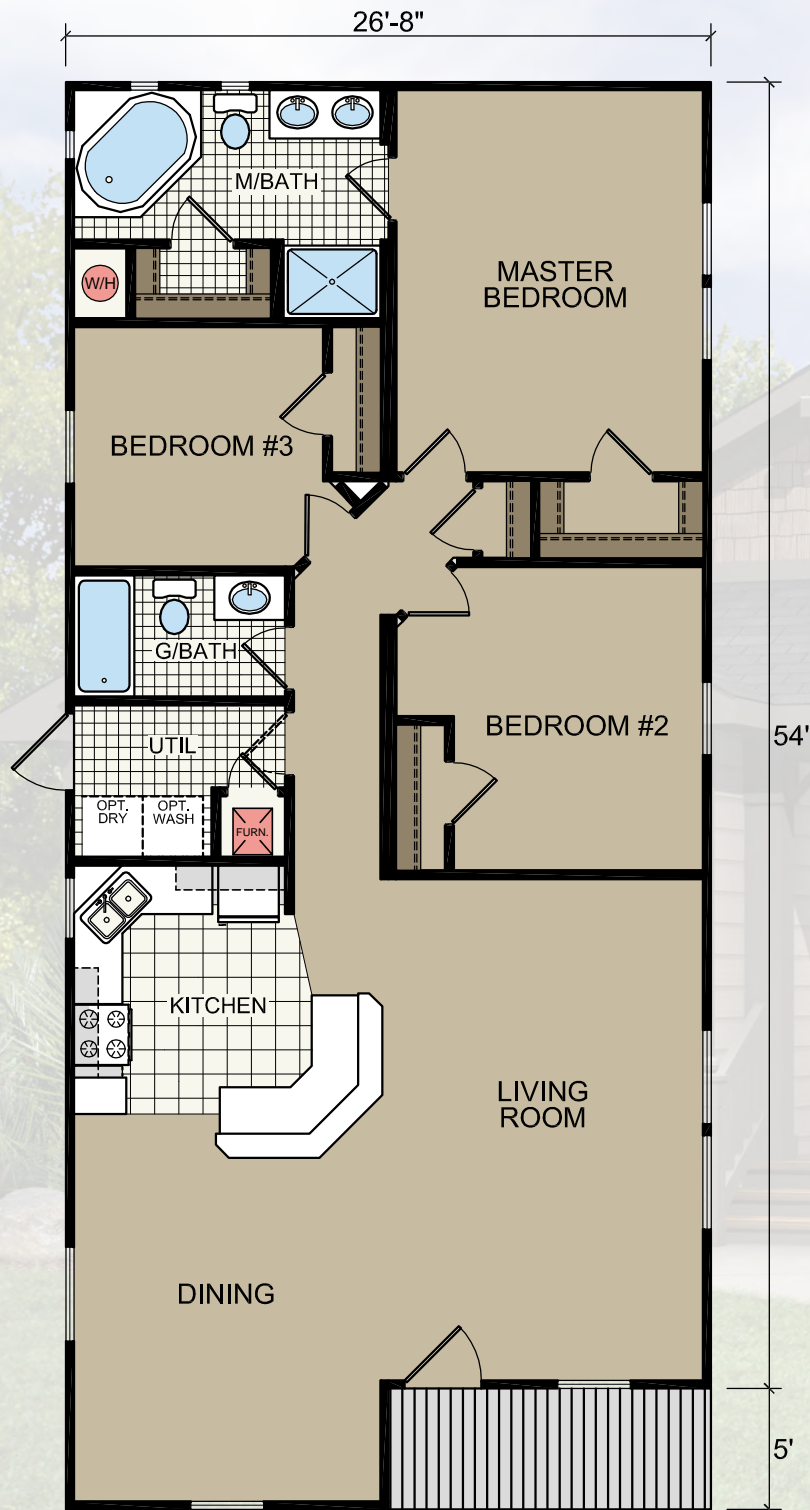
# Apalachee



28' x 53' • 3 Beds • 2 Baths • 1,413 Sq. Ft.







# Roanoke



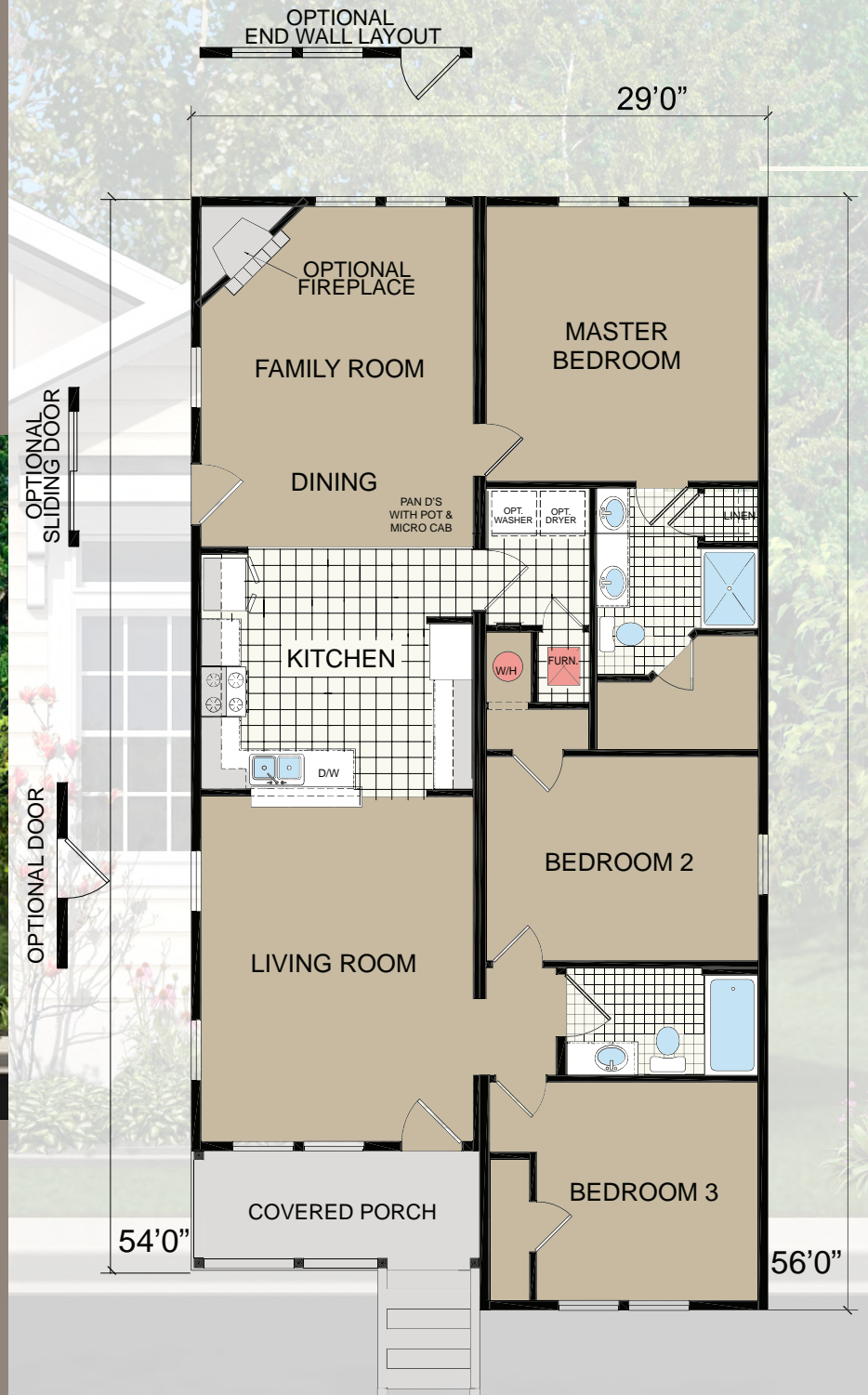
28' x 59' • 3 Beds • 2 Baths • 1,506 Sq. Ft.



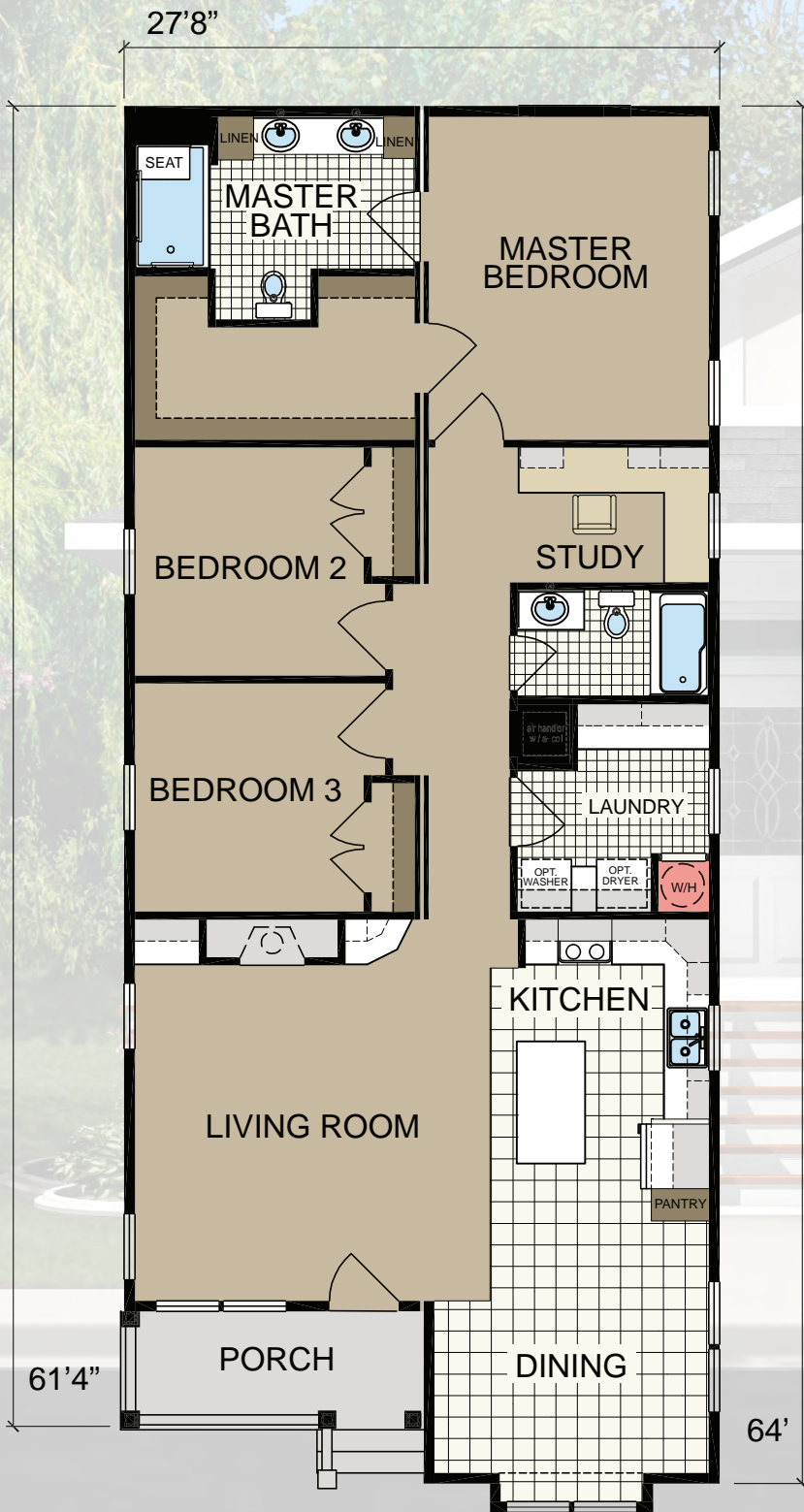
# Crescent



29' x 56' • 3 Beds • 2 Baths • 1,523 Sq. Ft.







# Rosewarne



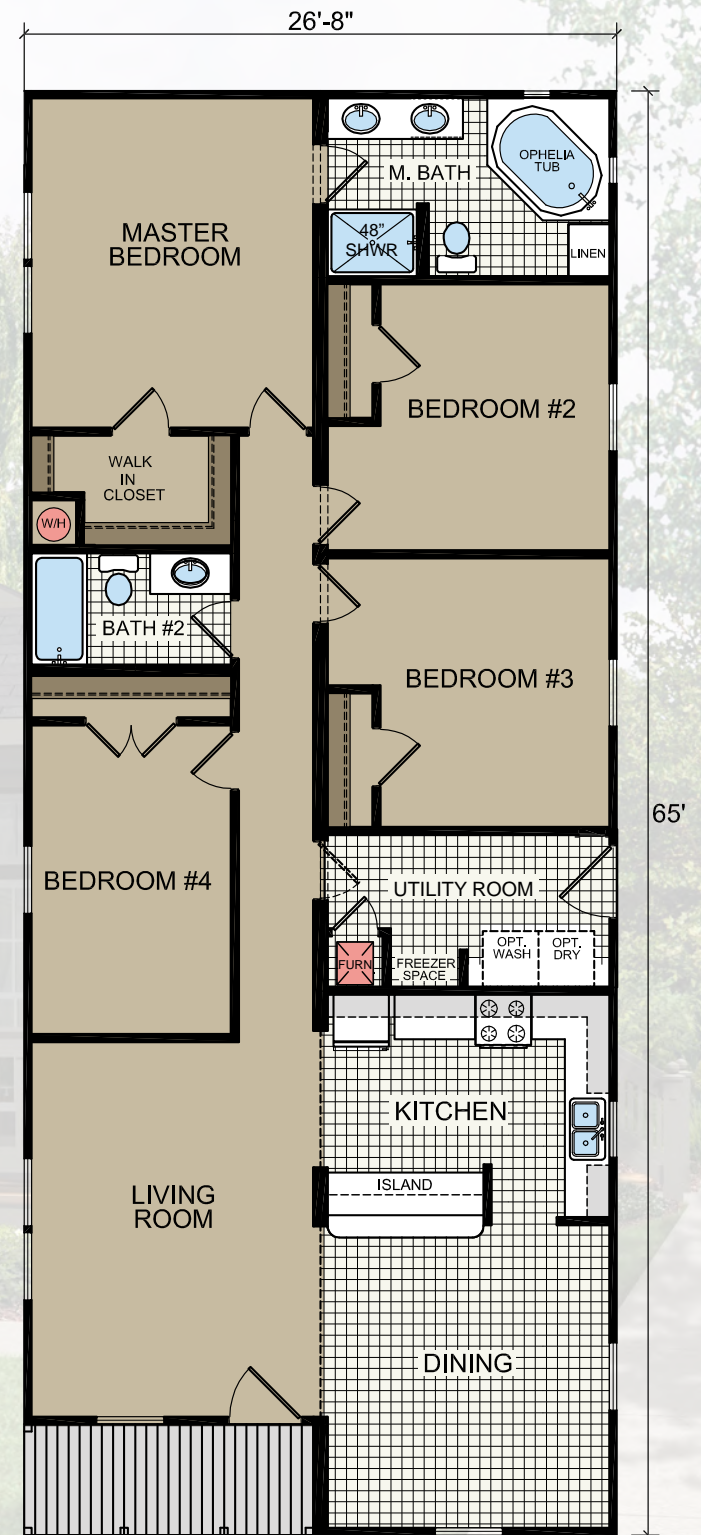
28' x 52' • 3 Beds • 2 Baths • 1,670 Sq. Ft.



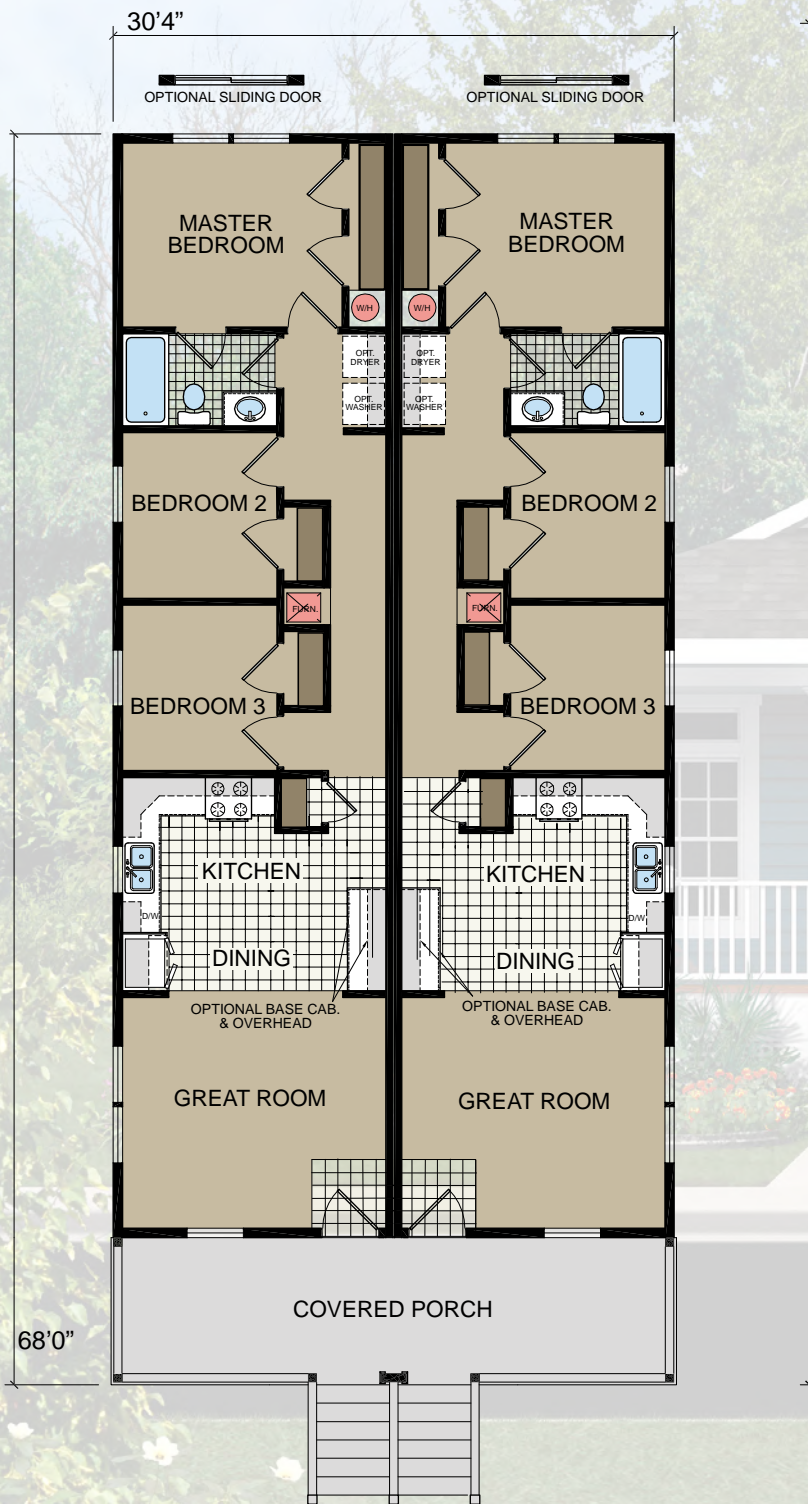
# Chattooga



28' x 65' • 4 Beds • 2 Baths • 1,666 Sq. Ft.







# Seabrooke I



32' x 63' • 3 Beds • 1 Bath • 1,911 Sq. Ft.



# Seabrooke II



32' x 69' • 3 Beds • 2 Baths • 2092 Sq. Ft.











# Coastal Collection

It's finding a home you can truly feel proud to call your own.

It's design choices that perfectly match your need for space and comfort and frees you to express them in your own way.

It's award-winning design and craftsmanship, with true attention to detail.

It's a commitment to providing you with the style and features you'll enjoy for years to come.

It's combining everything you would want in a home with surprising affordability.



New Era Homes of Strattanville, PA  
451 Southern Avenue | Strattanville, PA 16258  
T (800) 678.5581 | F (814) 764.5658

**[www.neweramodulars.com](http://www.neweramodulars.com)**

**DISCLAIMER:**

*Due to continuous product development and improvement, prices, specifications, and materials are subject to change without notice or obligation. Square footage and other dimensions are approximate. Included images are artist renderings and are not intended to be an accurate representation of the home. Renderings and floorplans may be shown with optional features or third-party additions.*