



FIBERGLASS DEAD-ENDS & TANGENT ARMS





FIBERGLASS DEAD-ENDS & TANGENT ARMS

The Best Option for Fiberglass Dead-End & Tangent Arms!

Fiberglass Dead-End Arms and Tangent Cross Arms are now available with the quality and performance you expect from Aluma-Form. Our dead-end arms are available a choice of pole gains (with and without guy attachments). Tangent arms are offer with our high strength Aluminum Pole Gain.

The Aluma-Form Advantage: Superior Performance

Our fiberglass tubes provide superior strength and durability. Aluma-Form's proprietary veiled fiberglass design provides superior UV, tracking and abrasion resistance.

Aluma-Form Quality

Aluma-Form has a long history of providing quality products for the Electric Utility industry. You can expect the same quality in every Dead-End Arm and/or Tangent Cross Arm you receive, helping the job get done right the first time.

Speed and Flexibility

Need your Dead-End or Tangents custom designed? No problem – just contact us or your local representative. With the best lead-times in the industry, Aluma-Form can deliver your arms when you need them!



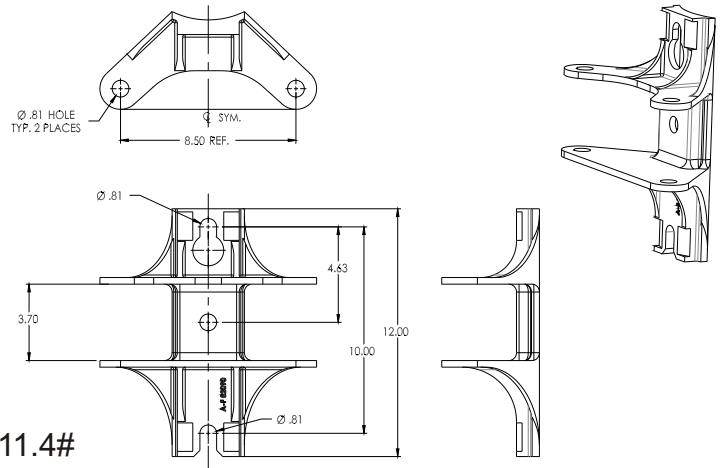
FIBERGLASS DEAD-END ARM POLE GAINS

FDA-D

Material Specifications

Pole Gain

- 65-45-12 Ductile Iron, hot-dip galvanized per ASTM A153 (10" mounting centers)
- Accepts 3/4" pole mounting hardware
- Can be banded using the Aluma-Form Bolt-A-Band™ banding system



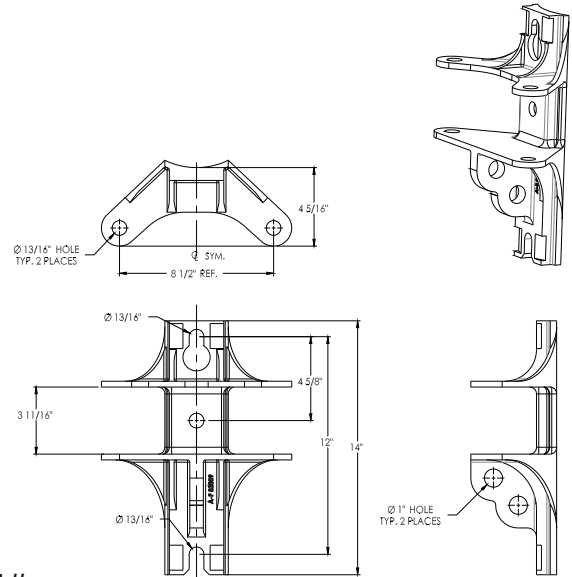
Weight - 11.4#

FDA-DG

Material Specifications

Pole Gain

- 65-45-12 Ductile Iron, hot-dip galvanized per ASTM A153 (12" mounting centers)
- 2 guy attachment positions - rated at 30,000# per hole
- Accepts 3/4" pole mounting hardware
- Can be banded using the Aluma-Form Bolt-A-Band™ banding system



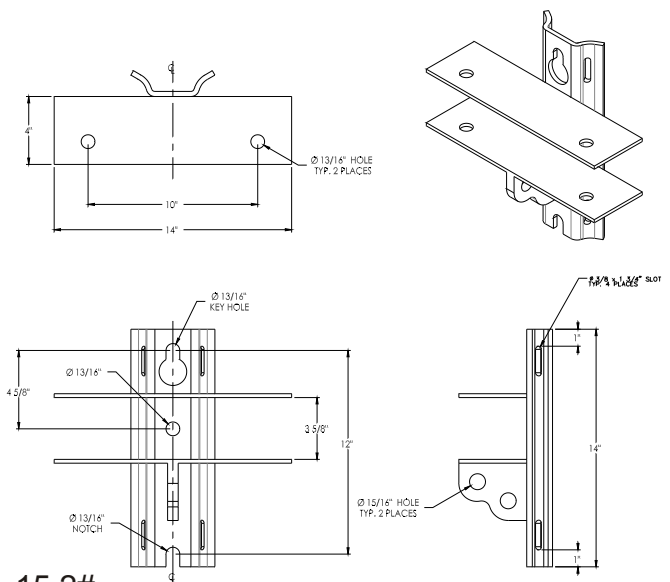
Weight - 14.1#

FDA-FG

Material Specifications

Pole Gain

- Hot rolled steel, continuous welds, galvanized per ASTM A153 (12" mounting centers)
- 2 guy attachment positions - rated at 30,000# per hole
- Accepts 3/4" pole mounting hardware
- Can be banded using the Aluma-Form Bolt-A-Band™ banding system



Weight - 15.2#



FIBERGLASS DEAD-END ARMS

ALUMA-FORM®

FDA - 20 B - 2 - 120 - EB IP - DG

Fiberglass Dead-end Arm

Strength Class

- 20 - Standard Duty
- 25 - Heavy Duty
- 30 - Extra Heavy Duty
- 40 - 4X6 Extra Heavy Duty

Color

- Blank - Gray
- B - Brown

Number of Conductors

- 2 - 2 wire
- 3 - 3 wire *
- 4 - 4 wire
- 3/4 - 3 or 4 wire *

Length of arm

- 96 = 8' arm
- 120 = 10' arm
- 144 = 12' arm

Eye Bolt options

- EB = Double Eye Bolts
- SB = Single Eye Bolts
- NB = No Eye Bolts

Inserts

- Blank - none
- IP - Pin Holes w/ Inserts

Pole Gain Options

- D = Ductile gain (no guying)
- DG = Ductile gain w/ 2GA
- FG = Fabricated gain w/ 2GA

* - 3 & 3/4 arms with center phase hardware used in single-sided applications are limited to an 85% ultimate load



ALUMA-FORM®

FIBERGLASS DEAD-END ARMS

FDA20 Series

2-wire & 4-wire

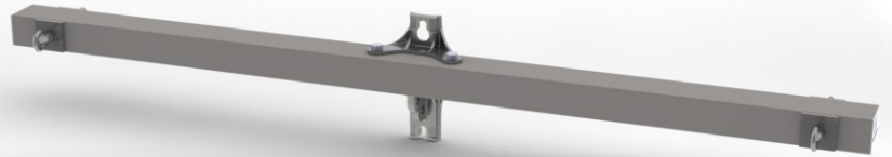
Material Specifications

Pole Gain

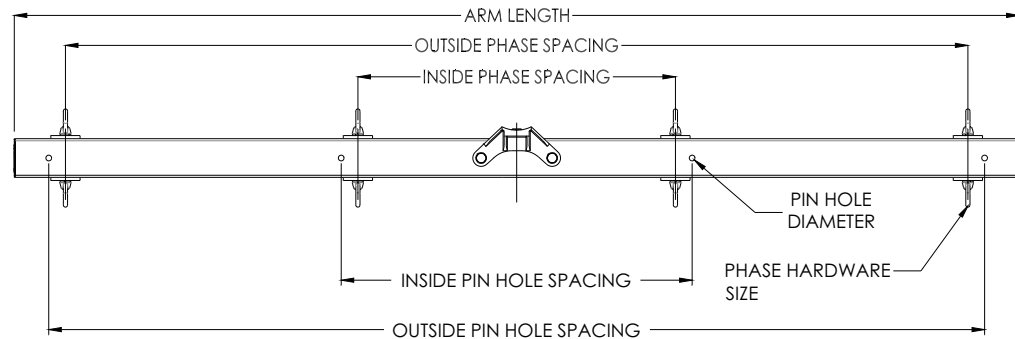
- 65-45-12 Ductile Iron, hot-dipped galvanized per ASTM A153 (12" mounting centers)
- 2 guy attachment positions - rated at 30,000# per hole
- Accepts 3/4" pole mounting hardware
- Can be banded using the Aluma-Form Bolt-A-Band™ banding system

Fiberglass Tube

- 3-5/8" X 4-5/8" Super-Smooth™, proprietary veiled gray polyester tube with added ultraviolet protection



FDA20-2-96-EB-DG (Shown above)



Catalog Number	Balanced Horizontal Load	Length	Pin Hole Diameter	Outside Pin Hole Spacing	Inside Pin Hole Spacing	# of Phases	Phase Hardware Size	Inside Phase Spacing	Outside Phase Spacing	Deflection per 1000 lbs	Weight (lbs)
FDA20-2-60-EB-DG	9000	60	11/16"	52	34	2	5/8"	-	48	0.18	44
FDA20-2-96-EB-DG	8000	96	11/16"	88	34	2	5/8"	-	84	0.47	55.5
FDA20-4-96-EB-DG	6000	96	11/16"	88	34	4	5/8"	*	84	0.85	61
FDA20-2-120-EB-DG	6500	120	11/16"	112	42	2	5/8"	-	108	0.95	63.2
FDA20-4-120-EB-DG	5000	120	11/16"	112	42	4	5/8"	*	1018	1.58	68.7

Notes:

1. *Please contact plant for inside phase spacing.
2. Custom drilling available, contact factory or local sales representative.
3. Standard hardware includes 5/8" Eye Nuts, bolts, & lock washers.
4. Use a "-D" option for pole gain without guying option
5. For eye bolts on one side of arm change "EB" to "SB"



ALUMA-FORM®

FIBERGLASS DEAD-END ARMS

FDA25 Series

2-wire, 4-wire

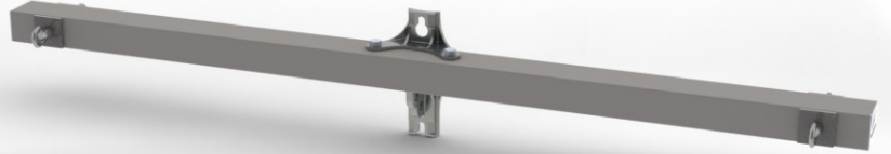
Material Specifications

Pole Gain

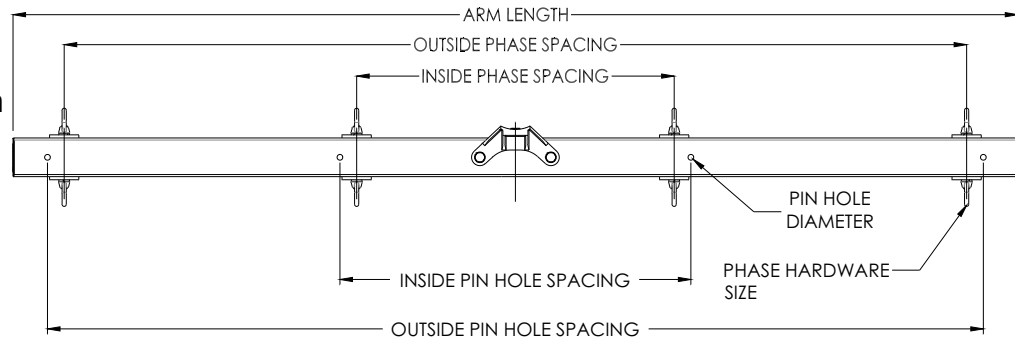
- 65-45-12 Ductile Iron, hot-dipped galvanized per ASTM A153 (12" mounting centers)
- 2 guy attachment positions - rated at 30,000# per hole
- Accepts 3/4" pole mounting hardware
- Can be banded using the Aluma-Form Bolt-A-Band™ banding system

Fiberglass Tube

- 3-5/8" X 4-5/8" Super-Smooth™, proprietary veiled gray polyester tube with added ultraviolet protection



FDA25-2-96-EB-DG (Shown above)



Catalog Number	Balanced Horizontal Load	Length	Pin Hole Diameter	Outside Pin Hole Spacing	Inside Pin Hole Spacing	# of Phases	Phase Hardware Size	Inside Phase Spacing	Outside Phase Spacing	Deflection per 1000 lbs	Weight (lbs)
FDA25-2-60-EB-DG	10000	60	11/16"	52	34	2	5/8"	-	48	0.18	44
FDA25-2-96-EB-DG	10000	96	11/16"	88	34	2	5/8"	-	84	0.38	55.5
FDA25-4-96-EB-DG	7500	96	11/16"	88	34	4	5/8"	*	84	0.62	61
FDA25-2-120-EB-DG	7500	120	11/16"	112	42	2	5/8"	-	108	0.71	63.2
FDA25-4-120-EB-DG	6000	120	11/16"	112	42	4	5/8"	*	108	0.96	68.7
FDA25-2-144-EB-DG	6000	144	11/16"	136	-	2	5/8"	-	132	1.25	71
FDA25-4-144-EB-DG	4200	144	11/16"	136	60	4	5/8"	*	132	1.76	79.4

Notes:

1. *Please contact plant for inside phase spacing.
2. Custom drilling available, contact factory or local sales representative.
3. Standard hardware includes 5/8" Eye Nuts, bolts, & lock washers.
4. Use a "-D" option for pole gain without guying option
5. For eye bolts on one side of arm change "EB" to "SB"



ALUMA-FORM[®]

FIBERGLASS DEAD-END ARMS

FDA30 Series

2-wire, 4-wire

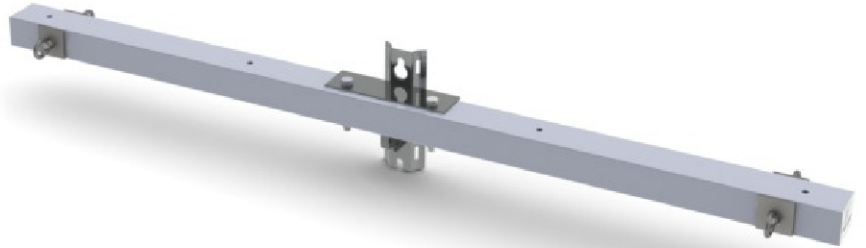
Material Specifications

Pole Gain

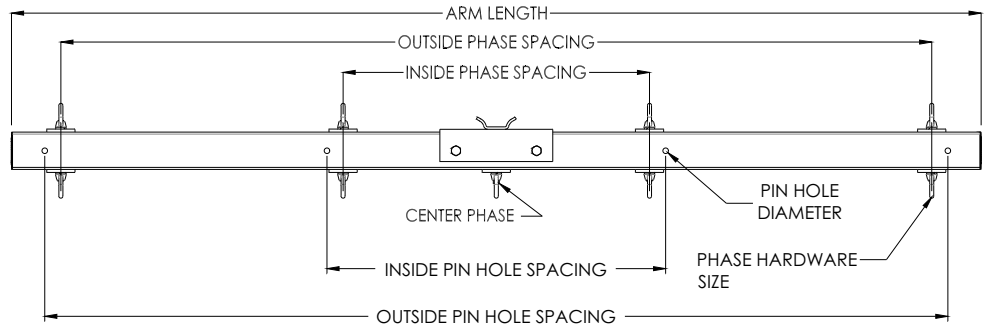
- 65-45-12 Ductile Iron, hot-dipped galvanized per ASTM A153 (12" mounting centers)
- 2 guy attachment positions - rated at 30,000# per hole
- Accepts 3/4" pole mounting hardware
- Can be banded using the Aluma-Form Bolt-A-Band[™] banding system

Fiberglass Tube

- 3-5/8" X 4-5/8" Super-Smooth[™], proprietary veiled gray polyester tube with added ultraviolet protection



FDA30-2-96-EB-FG (Shown above)



Catalog Number	Balanced Horizontal Load	Length	Pin Hole Diameter	Outside Pin Hole Spacing	Inside Pin Hole Spacing	# of Phases	Phase Hardware Size	Inside Phase Spacing	Outside Phase Spacing	Deflection per 1000 lbs	Weight (lbs)
FDA30-2-60-EB-FG	14700	60	13/16"	52	34	2	3/4"	-	48	0.13	45.4
FDA30-2-96-EB-FG	14700	96	13/16"	88	34	2	3/4"	-	84	0.33	56.9
FDA30-4-96-EB-FG	11300	96	13/16"	88	34	4	3/4"	*	84	0.54	62
FDA30-2-120-EB-FG	13000	120	13/16"	112	42	2	3/4"	-	108	0.61	64.6
FDA30-4-120-EB-FG	10000	120	13/16"	112	42	4	3/4"	*	108	0.89	69.7
FDA30-2-144-EB-FG	10000	144	13/16"	136	-	2	3/4"	-	132	1.07	72.3
FDA30-4-144-EB-FG	7000	144	13/16"	136	60	4	3/4"	*	132	1.45	77.4

Notes:

1. *Please contact plant for inside phase spacing.
2. Custom drilling available, contact factory or local sales representative.
3. Standard hardware includes 3/4" Eye Nuts, bolts, & lock washers.
4. For eye bolts on one side of arm change "EB" to "SB"



FIBERGLASS DEAD-END ARMS

FDA40 Series

2-wire

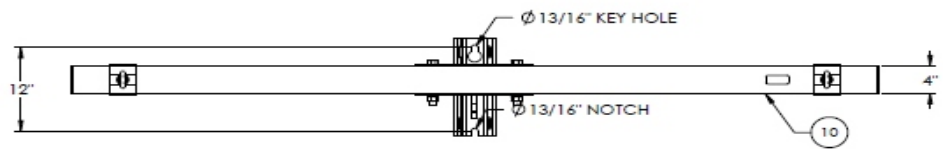
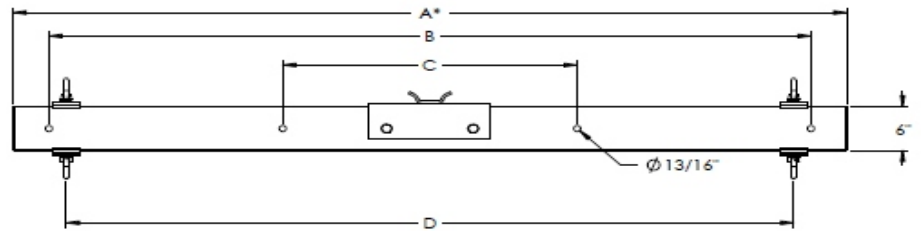
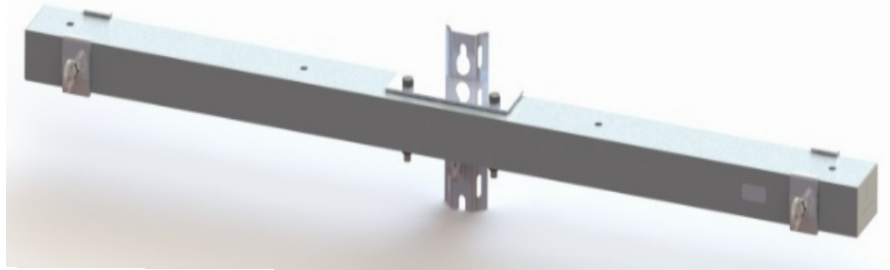
Material Specifications

Pole Gain

- 65-45-12 Ductile Iron, hot-dipped galvanized per ASTM A153 (12" mounting centers)
- 2 guy attachment positions - rated at 30,000# per hole
- Accepts 3/4" pole mounting hardware
- Can be banded using the Aluma-Form Bolt-A-Band system.

Fiberglass Tube

- 4" X 6" Super-Smooth, proprietary veiled gray polyester tube with added ultraviolet protection.



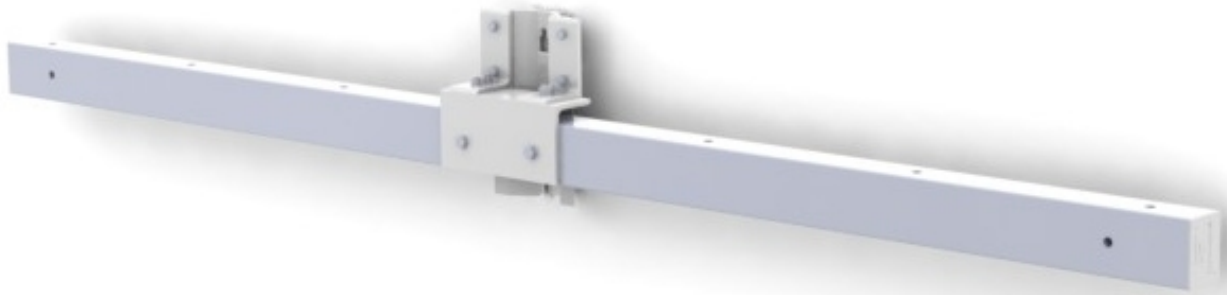
Catalog Number	Balanced Horizontal Load	Length "A"	Pin Hole Diameter	Outside Pin Hole Spacing "B"	Inside Pin Hole Spacing "C"	# of Phases	Phase Hardware Size	Outside Phase Spacing "D"	Deflection per 1000 lbs	Weight (lbs)
FDA40-2-96-EB-FG	13400	96	13/16	34	88	2	3/4"	84	0.17	54.8
FDA40-2-120-EB-FG	13000	120	13/16	42	112	2	3/4"	108	0.37	65.07

Notes:

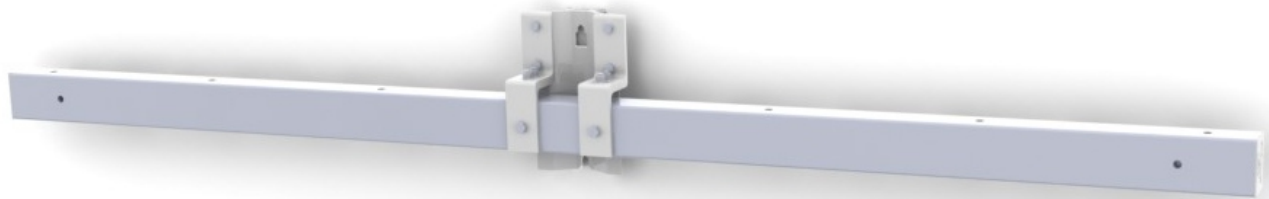
1. Custom lengths and hole spacing available, contact factory or local sales representative.



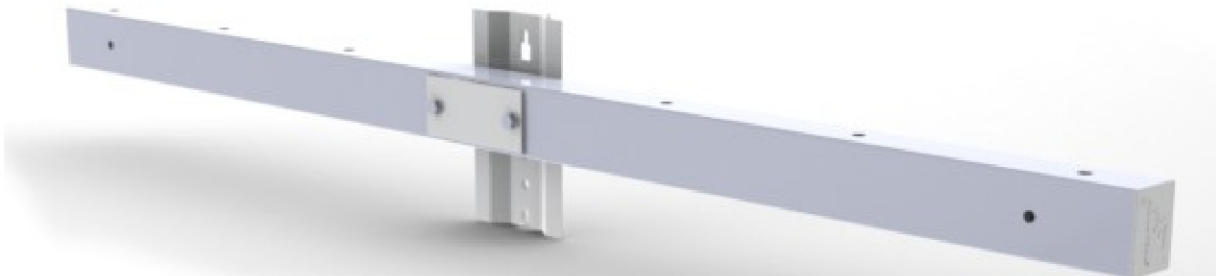
FIBERGLASS TANGENT ARMS



FTA30 SERIES



FTA25 SERIES



FTA20L & FTA20 SERIES

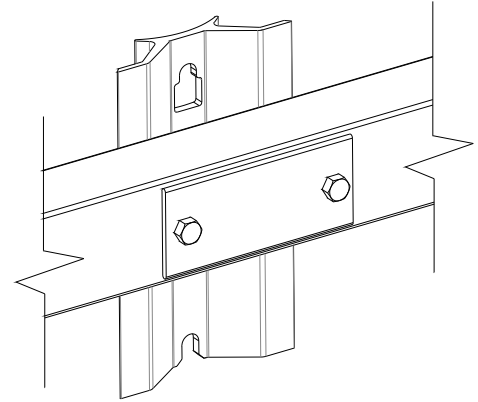


FIBERGLASS TANGENT ARM POLE GAINS

FTA20L & FTA20

Pole Gain

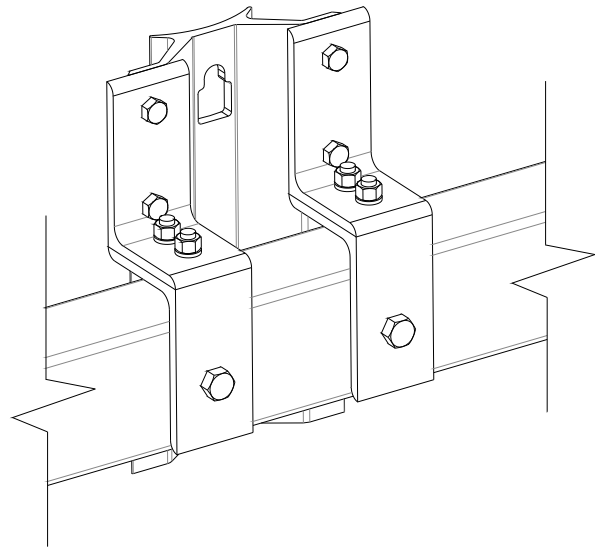
- 6061-T6 Aluminum Pole Gain with 8", 10", & 12" mounting centers
- Accepts 5/8" pole mounting hardware
- Can be banded using the Aluma-Form Bolt-A-Band™ banding system



FTA25

Pole Gain

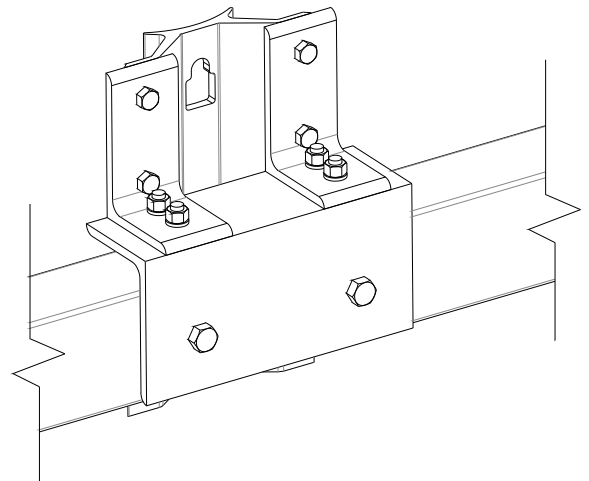
- 6061-T6 Aluminum Pole Gain with 12" mounting centers
- Accepts 5/8" pole mounting hardware
- Can be banded using the Aluma-Form Bolt-A-Band™ banding system



FTA30

Pole Gain

- 6061-T6 Aluminum Pole Gain with 12" mounting centers
- Accepts 3/4" pole mounting hardware
- Can be banded using the Aluma-Form Bolt-A-Band™ banding system





FIBERGLASS TANGENT ARMS

ALUMA-FORM®

FTA - 20 B - 2 - 120 - A IP

Fiberglass Tangent Arm

Strength Class

20L - Light Duty
20 - Standard Duty
25 - Heavy Duty
30 - Extra Heavy Duty

Color

Blank - Gray
B - Brown

Number of Insulator Pin Locations

2 - 2 Pin Locations
4 - 4 Pin Locations
6 - 6 Pin Locations

Length of arm

96 = 8' arm
120 = 10' arm
144 = 12' arm

Construction Type

A = Braceless Construction
B = Braced Construction

Inserts

Blank - none
IP - Open Holes w/ Inserts



FIBERGLASS TANGENT ARMS

ALUMA-FORM®

FTA20L & FTA20 Series

Material Specifications

Pole Gain

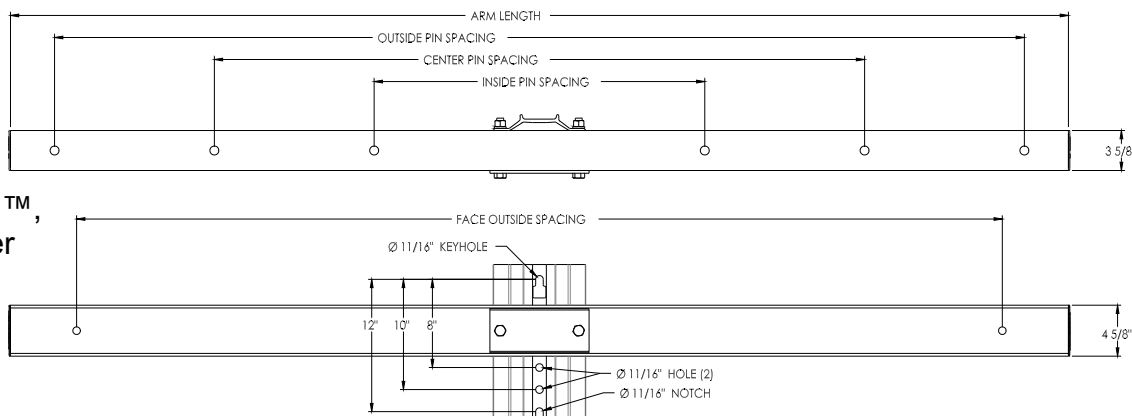
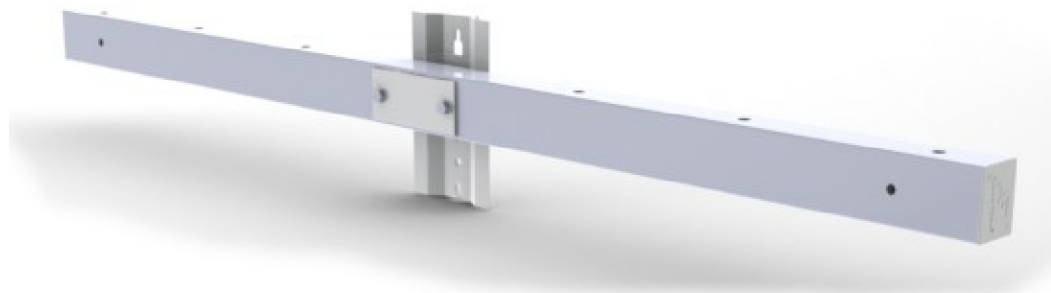
- 6061-T6 Aluminum Pole Gain with 8", 10", & 12" mounting centers

- Accepts 5/8" mounting hardware

- Can be banded using the Aluma-Form Bolt-A-Band™ banding system

Fiberglass Tube

- 3-5/8" X 4-5/8" Super-Smooth™, proprietary veiled gray polyester tube with added ultraviolet protection



Catalog Name	Balanced Vertical Load per side	Length	Face Hole Diameter	Face Hole Spacing	Insulator Pin Positions	Phase hole diameter (Top)	Inside	Center	Outside	Deflection per 1000 lbs	Weight
FTA20L-4-60-A	6200	60	11/16"	48	4	11/16"	23	-	52	0.3	25.7
FTA20L-4-96-A	6100	96	11/16"	84	4	11/16"	30	-	88	0.59	37.2
FTA20L-6-96-A	6100	96	11/16"	84	6	11/16"	30	59	88	0.59	37.2
FTA20L-6-120-A	5000	120	11/16"	108	6	11/16"	38	75	112	1.13	52.7
FTA20L-4-144-A	3800	144	11/16"	132	4	11/16"	76	-	136	2.21	68.2
FTA20-4-60-A	6500	60	11/16"	48	4	11/16"	23	-	52	0.24	25.8
FTA20-4-96-A	6400	96	11/16"	84	4	11/16"	30	-	88	0.43	37.3
FTA20-6-96-A	6400	96	11/16"	84	6	11/16"	30	59	88	0.43	37.3
FTA20-6-120-A	5400	120	11/16"	108	6	11/16"	38	75	112	0.77	52.7
FTA20-4-144-A	4200	144	11/16"	132	4	11/16"	76	-	136	1.2	68.3

Notes:

1. Custom drilling available, contact factory or local sales representative.



FIBERGLASS TANGENT ARMS

ALUMA-FORM®

FTA25 Series

Material Specifications

Pole Gain

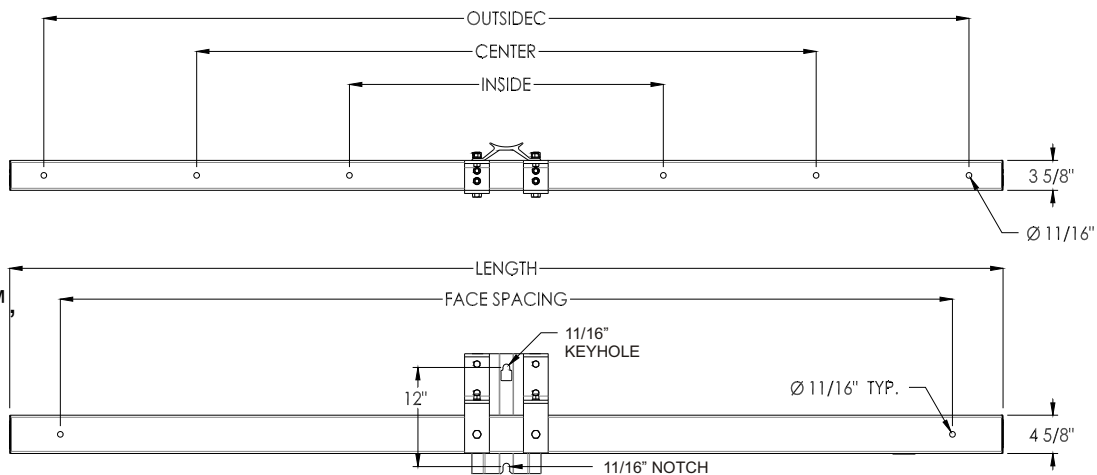
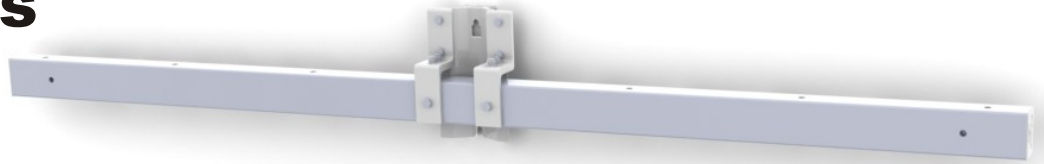
- 6061-T6 Aluminum Pole Gain with 12" mounting centers

- Accepts 5/8" pole mounting hardware

- Can be banded using the Aluma-Form Bolt-A-Band™ banding system

Fiberglass Tube

- 3-5/8" X 4-5/8" Super-Smooth™ proprietary veiled gray polyester tube with added ultraviolet protection



Catalog Name	Balanced Vertical Load per side	Length	Face Hole Diameter	Face Hole Spacing	Insulator Pin Positions	Phase hole diameter (Top)	Inside	Center	Outside	Deflection per 1000 lbs	Weight
FTA25-4-60-A	7500	60	11/16"	48	4	11/16"	23	-	52	0.19	30.3
FTA25-4-96-A	7500	96	11/16"	84	4	11/16"	30	-	88	0.55	41.8
FTA25-6-96-A	7500	96	11/16"	84	6	11/16"	30	59	88	0.55	41.8
FTA25-6-120-A	6000	120	11/16"	108	6	11/16"	38	75	112	1.06	49.5
FTA25-4-144-A	4800	144	11/16"	136	4	11/16"	76	-	132	1.33	57.1

Notes:

1. Custom drilling available, contact factory or local sales representative.



FIBERGLASS TANGENT ARMS

ALUMA-FORM®

FTA30 Series

Material Specifications

Pole Gain

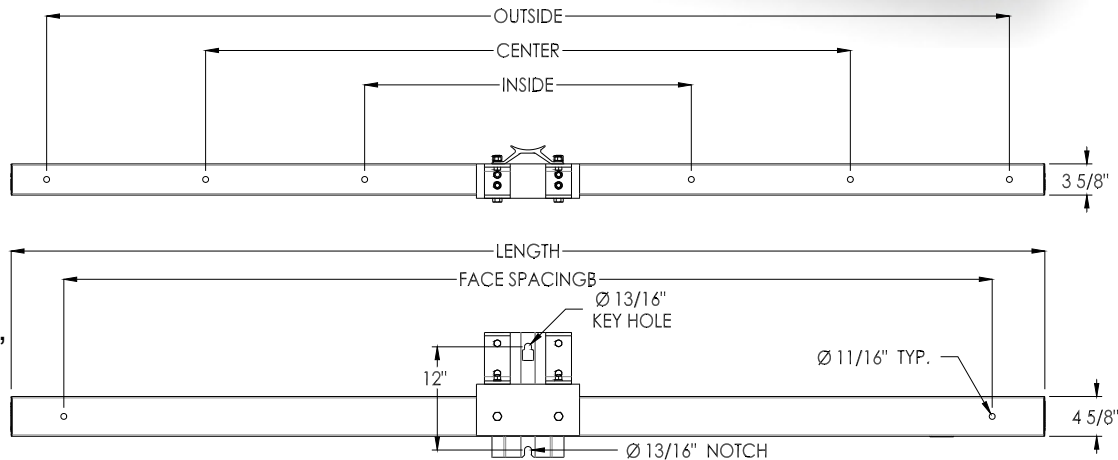
- 6061-T6 Aluminum Pole Gain with 12" mounting centers

- Accepts 3/4" pole mounting hardware

- Can be banded using the Aluma-Form Bolt-A-Band™ banding system

Fiberglass Tube

- 3-5/8" X 4-5/8" Super-Smooth™, proprietary veiled gray polyester tube with added ultraviolet protection



Catalog Name	Balanced Vertical Load per side	Length	Face Hole Diameter	Face Hole Spacing	Insulator Pin Positions	Phase hole diameter (Top)	Inside	Center	Outside	Deflection per 1000 lbs	Weight
FTA30-4-60-A	10000	60	11/16"	48	4	11/16"	23		52	0.15	32.4
FTA30-4-96-A	10000	96	13/16"	84	4	13/16"	30		88	0.39	44
FTA30-6-96-A	10000	96	13/16"	84	6	13/16"	30	59	88	0.39	44
FTA30-6-120-A	9400	120	13/16"	108	6	13/16"	38	75	112	0.71	51.7
FTA30-4-144-A	8000	144	13/16"	136	4	13/16"	76		132	1.23	59.4

Notes:

1. Custom drilling available, contact factory or local sales representative.



ALUMA-FORM®

3625 Old Getwell Rd. / Memphis, TN 38118 / P.O. Box 18555 / Memphis, TN 38181-0555 / Phone 901-362-0100 / Fax 901-794-9515
www.alumaform.com

©2011 Aluma Form, Inc.