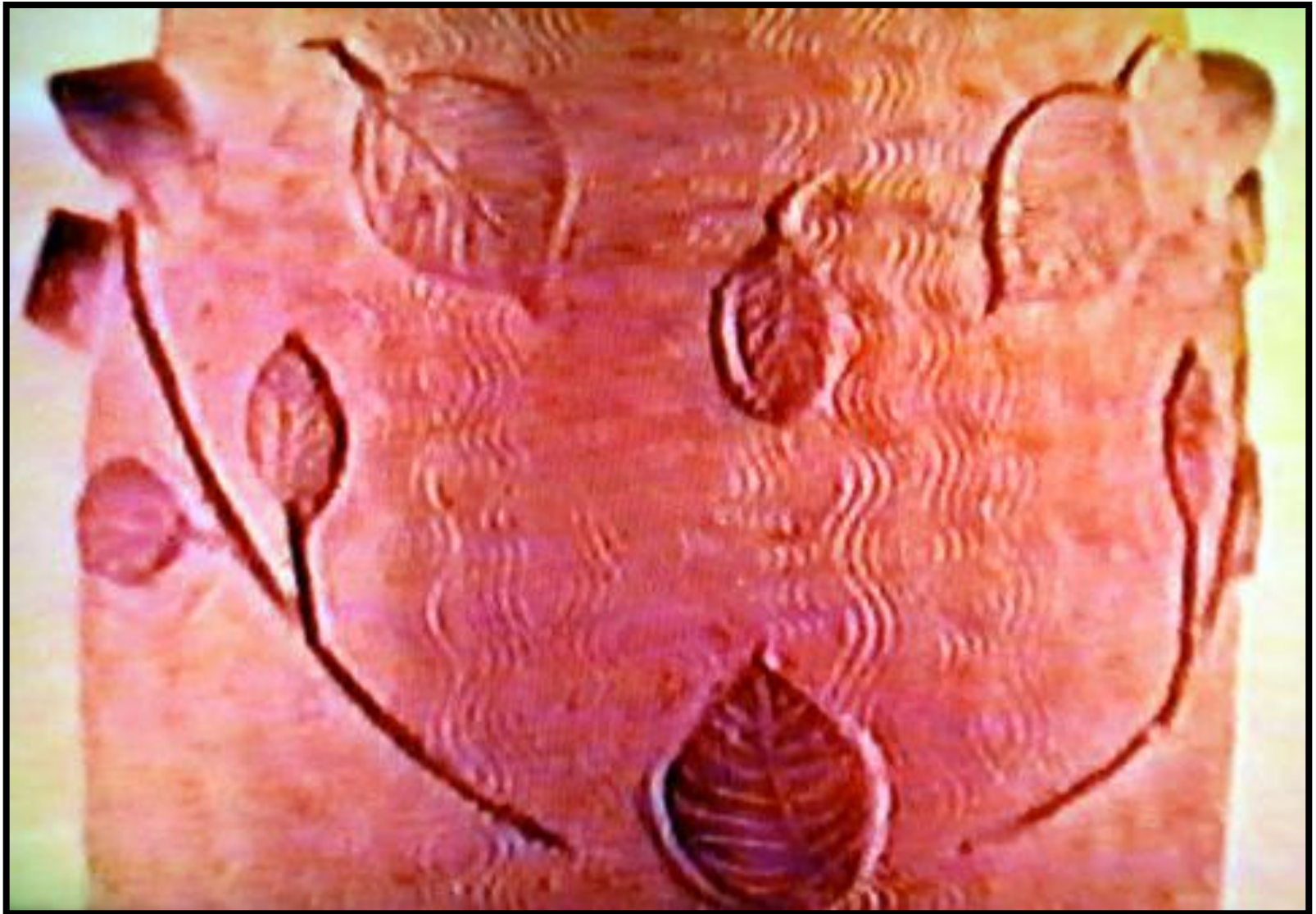


WH Specialties and Mini's















PART III

Figurals, lunch hour, and
presentation pieces.





















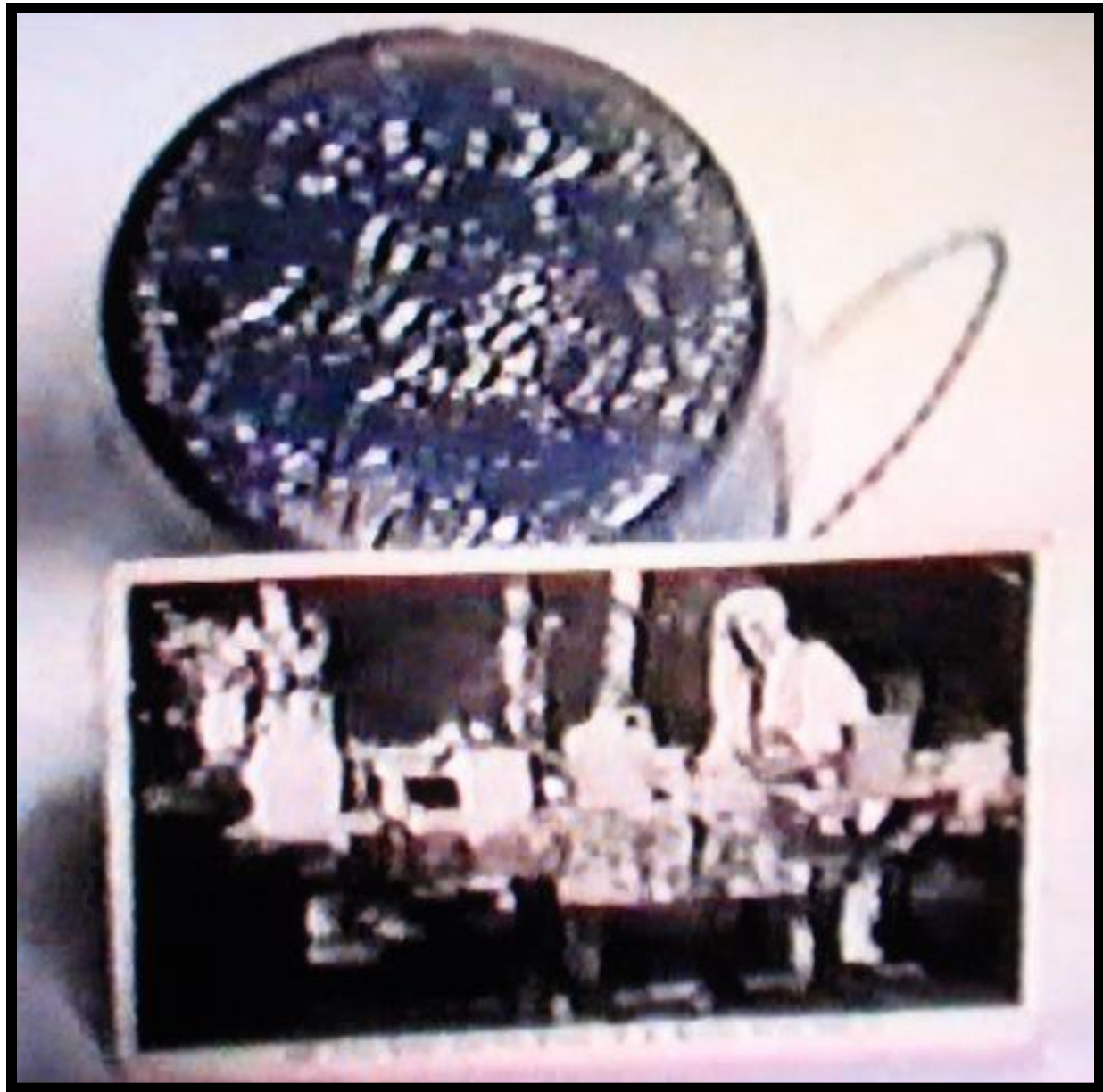
































JERSEY
BRAND
HOT
CHOCOLATE

SHENKEL

BLUE
STONEWARE



























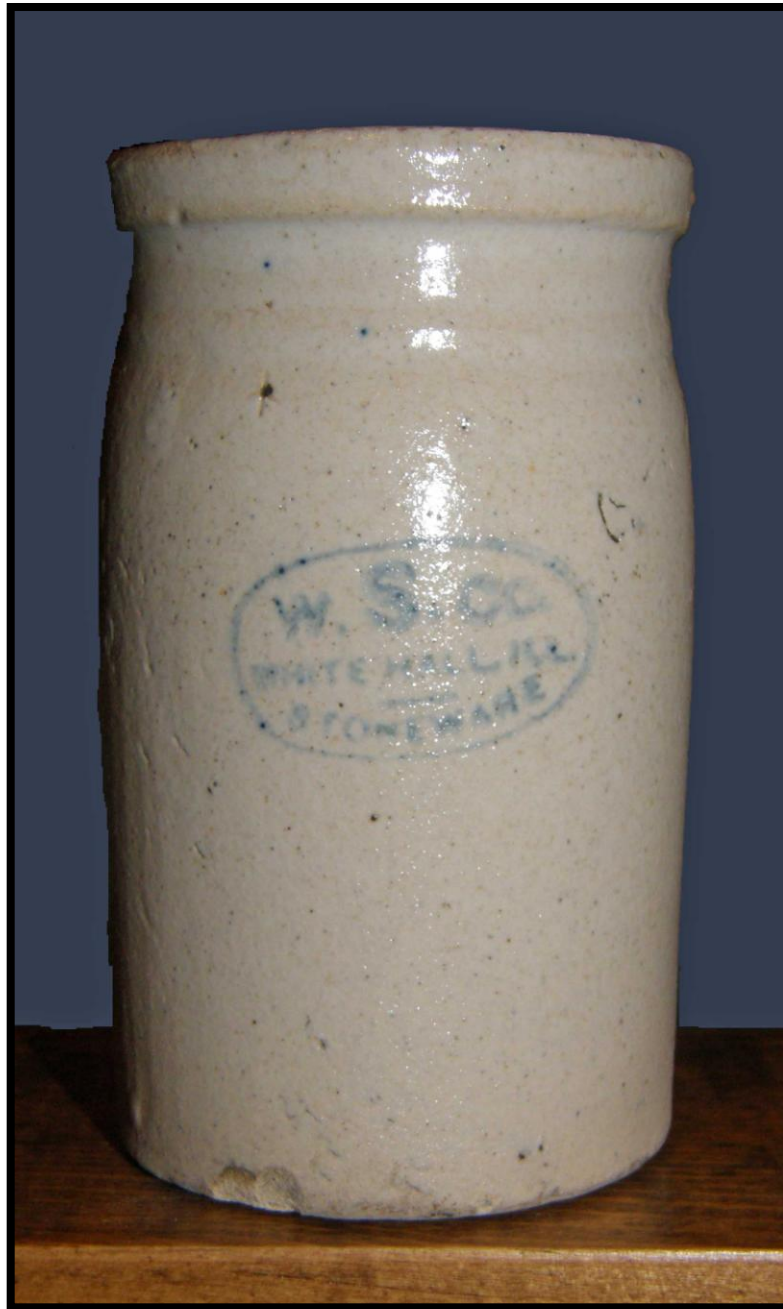














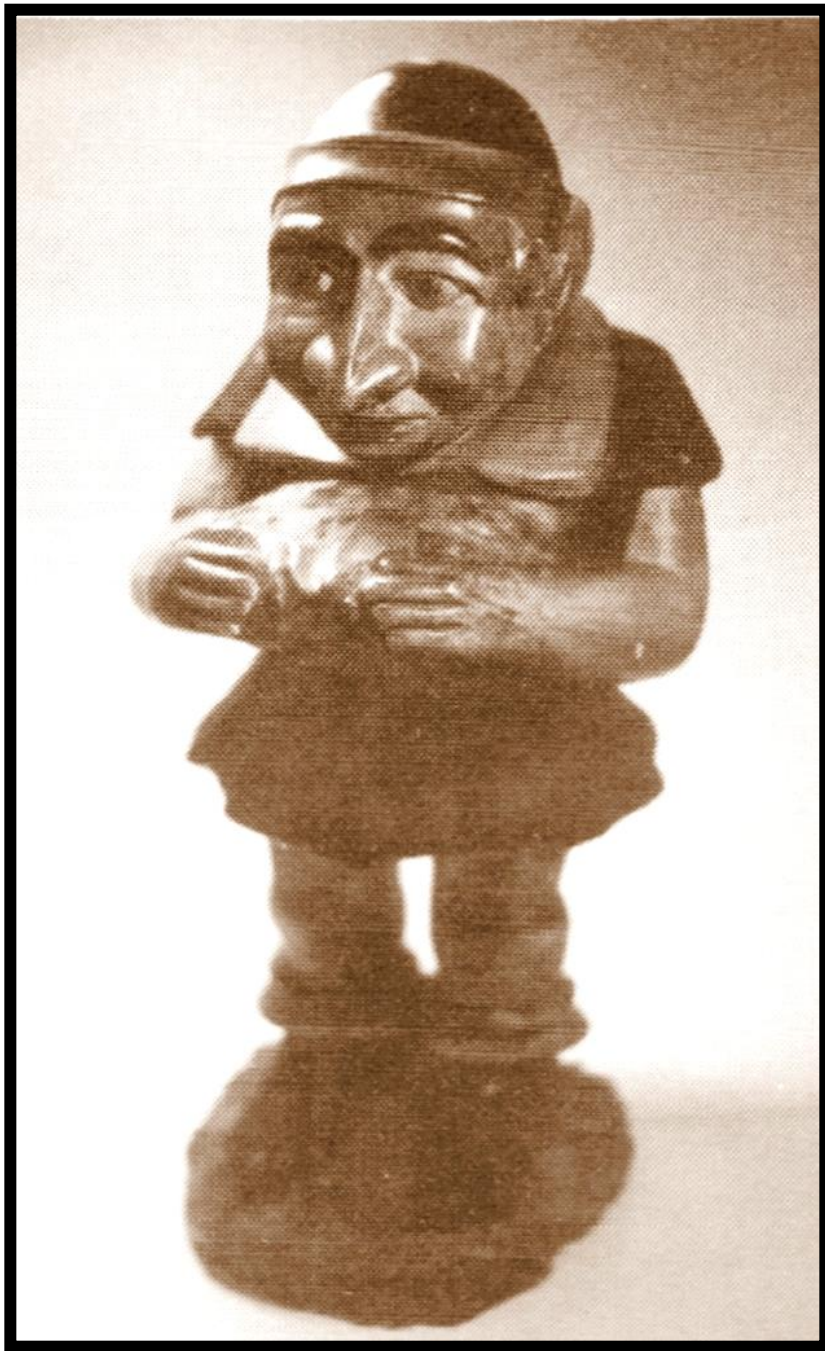












One of seven molded gnomes made in 1932. Original was hand carved of solid clay and a seven piece mold was made of plaster of paris by R. McClure. About 24 inches high, the original was made by Don Shirley. Only one other one is known to exist and that is in North Carolina. *(Photo courtesy of Don Shirley.)*