

# Rock Talk



December 2018





# Rock Talk



*Happy Holidays*

## December 12th Meeting Program

The business portion of the December meeting will be the election of officers and the election of two board of director members. Also John Motzer will be summarizing the results of our gem show. We will have a

**Chinese Auction**, so please bring rocks, fossils, or something that can be given as a Christmas gift. Refreshments will be available and we will have the usual 50/50 drawing and several door prizes.

### In This Issue

- The Meeting as I Saw it
- November Club Meeting Photos
- Jewelry Class Photos
- Secretary's Report
- President's Message
- The David Letasi Report
- 2.5 Pound Emerald
- What is It?
- Mars Rocks
- Bench Tips
- New Club Membership Form

### The Cover Photo

Is the mineral ice. Although many people do not think of ice as a mineral, it is a mineral just as much as quartz is a mineral. Ice is a naturally occurring compound with a defined chemical formula and a crystal structure, thus making it a legitimate mineral.



Dave Letasi, identifying fossils at the November club meeting. More club meeting photos on page 4

**Next Meeting, Wednesday, December 12th, 6:30 PM at the Weeki Wachee Senior Citizens Center**



### The Meeting as I Saw it



by  
**Dorwin Skinner**



Wow, I couldn't believe the number of cars in the parking lot and it was only 6:15. I managed to find a place to park and find my way inside. The club was in full stride with show and tell about the recent field trips to the Vulcan Mine and the Peace River. Mike and Paula Palinic had a nice hunk of matrix from the Vulcan Mine with what looked like a piece of a sharks tooth embedded in it. Of course they won't know for sure until they dig it out and clean it up. Roberta Oldread had several examples of echinoids that I believe are Clypeaster Rogersi. It looks like there are some really good specimens being found at the mine this year. The club added a new excursion to its list; a trip to the Peace River looking for fossils. Jim Gugliotti brought his finds in to show everyone. I wish I could go, it looked to me like it would be fun. In one corner of the room I saw Dave Letasi examining several specimens. When I got there he was holding a large specimen of a fish that looked to me like a Vinctifer Fish from Brazil. I never got a chance to ask Dave if I was right. Maybe he will tell me at the next meeting. I finally made my way back to the snack bar and I had to choose from several offerings on the counter. I finally narrowed it down to two so I took one of each. They were both good. I bought my raffle tickets in hope of winning the grand prize. I think it might have been

rigged because even though there were about 20 numbers called, not one of mine made the cutoff. Well, maybe next time. I will be bringing my cake to the next meeting in December, hope to see you all then.



Checking out the door prize table



Jim with his Pease River finds



Lots of nice specimens

More meeting photos on next page

**Our Website**  
[www.withlacoocheerockhounds.com](http://www.withlacoocheerockhounds.com)

**Withlacoochee Rockhounds**  
 PO Box 5634  
 Spring Hill, FL 34611-5634



# November Meeting Photos



The November meeting is about to start.



Dave with a fossil fish



Fossil pendant (front and back) by Roberta



Happy making mud with the Pixie



Roberta's Vulcan Mine finds



Judith presenting her summer rock and mineral finds



Calling out the 50/50 and door prize numbers



Lauren explaining her summertime collecting



Lynn showing some of her Vulcan Mine discoveries



# The November Tuesday Morning Jewelry Class (making jewelry from polymer clay)





## Secretary's Report



by  
Melodye Steverson



### Withlacoochee Rockhounds Board of Directors Meeting Minutes Date 11/20/18

Attending Board members; Judith Birx, Melodye Steverson, Janet Wheeler, Ralph Barber, Rovie Alford, Dorwin Skinner, Mike Stone. Also in attendance; members John Motzer, Doug and Gloria DuPont, and Lynn Walker.

The board meeting started at 6:28pm and was held at the Weeki Wachee Senior Center.

- Club president Judith Birx brought up the changes to the membership form. Mike Stone passed around a new membership form and everyone approved it.
- President Birx recognized John Moetzer for his report on the gem show. John said we have 29 vendors and might have a few more coming in. We have sold 56 tables and might sell as many as 70 to 80 by the time of the event. Vendors can be added as late as Tuesday before the show. John said that the advertising is working. There has been positive feedback coming in. We have been 21 volunteers signed up to help at the show.
- Judith Birx is responsible for getting the vendors to donate items for door prizes.
- John Motzer said we need a tarp under the polishing machine to protect the new

floor in the gymnasium.

- It is possible that the facility will cover the entire floor to protect the new finish.
- Suggestions:
- There need to be chairs in the gymnasium for older or infirm guests to sit if they need to.
- Have some volunteers watch the vendor's tables if they have to take a break.
- During the last hour of the show, attendees should get in free.
- President Birx brought up the gift card that she provided for a drawing for the visiting vendors last year.
- She said they were happy to have a chance to win something. She proposed that the club buy a \$50 gift card this year and have a drawing for the visiting vendors (non-club members). Rovie Alford made the motion to have the club purchase a \$50 gift card to be given to the visiting vendor that wins the vendor drawing. The motion was seconded by Janet Wheeler and it was passed by all.
- President Birx opened the subject of the annual holiday party in January. After discussion, it was decided to buy the meats already cooked and sliced from a professional source. Also, members and their family only can attend the meeting, no guests. At the end of the "Rock Bingo" game, anyone without a gift will be allowed to take one from any member that has more than one prize, so everyone gets a gift.
- President Birx brought up the subject of establishing a scholarship fund for one member per year to attend the William Holland School of Lapidary Arts. It was decided to complete the proposal, then present it to the Board at a later time.

- Mike Stone had several questions;
- Did the increase in dues cover all the expenses of the club? No. But it covers the expense of each individual member.
- Why does the club give gem show money to the scholarship fund at USF? The club was originally established to provide and sustain an endowment fund to provide a scholarship for an exceptional student from the Geology Department at USF. This is why the club was created.
- Why don't more people want to volunteer to help at the gem show? No ideas. We can ask them.
- We had talked about setting up Amazon Smile. Can we do it now? Janet Wheeler volunteered to set up the club on Amazon Smile.
- We were talking about getting sponsors for the club and putting ads in the newsletter.
- We can approach businesses for sponsorship and offer them free ads in the newsletter for one year. It doesn't have to be a rock related business. We can also sell ads to businesses that just want to pay the ten dollars per month. We will discuss this more at the next Board meeting.
- Ralph Barber stated that it is time to pay for the storage facility we rent yearly for the club's equipment. He said if we pay it all at once, we can keep the rate we have now. He was approved to pay for the 2019 year now.
- Dorwin Skinner made a motion to adjourn the meeting, the motion was seconded by Janet Wheeler, and it was approved by all.
- The meeting adjourned at 8:28pm.

*Minutes respectfully submitted by Secretary Melodye Steverson*



**Withlacoochee Rockhounds  
Monthly Meeting Minutes  
Date 11/13/18**

- The meeting was called to order by club president Judith Birx at 7:05 pm.
- We all stood for the Pledge of Allegiance followed by a moment of silent prayer.
- There were no new members to recognize.
- There were the guests in attendance; Laurie Rule, Karen Galerneau, and Joseph Riedel.
- Rovie Alford made a motion to accept the minutes of our October meeting as printed in the newsletter, the motion was seconded by Michele Evans and it was passed by all members.
- Club treasurer, Janet Wheeler, gave the Treasurer's Report.
- Doug DuPont made a motion to accept the Treasurer's Report as given. The motion was seconded by Dave Letasi and approved by the membership.
- **Old Business**
- Club president Birx reminded everyone that our membership dues for the coming year should be paid by the end of December. The new amount for dues is \$20 per adult and \$5 for those under the age of 18.
- John Moetzer, the Gem Show Committee Co-Chair, gave an update on the gem show preparations. As of that time, we had 62 tables sold to 23 vendors. All the advertising is complete and will cover a large area. He reminded members that they need to volunteer to help at the show and he had sign-up sheets at the front table.
- Ralph Barber will be taking care of the snacks at the gem show. They will be made available for purchase by attendees.
- **New Business**
- President Birx announced;
- A Beginner Silver Smithing class will be

starting soon if we have enough interested people. She asked any interested members to sign up with Ralph Barber and Rovie Alford.

- The next Board of Directors meeting will be held on November 18<sup>th</sup> at 6:30 pm.
- The Jewelry class on December 4<sup>th</sup> at 9:00am will be using polymer clay. The cost will be \$5 each person unless you bring your own clay.
- The next monthly meeting will be held at 7:00 pm on December 12. The annual election will be held during this meeting. Current members should attend the meeting to vote. The meeting program will be John Moetzer's report on the gem show.
- The candidates for the election are as follows;

**Officers**

President – Judith Birx  
Vice President – Mark Moore  
Secretary – Melodye Steverson  
Treasurer – Janet Wheeler

**Board of Directors**

Lynn Walters  
Ginny Steverson

- Our annual holiday party will be on January 9<sup>th</sup> 2019.
- Newsletter Editor, Mike Stone, announced that he had club business cards for anyone who needs them, and also asked all members to make sure that he has their correct, current email address so he can distribute the link to the newsletter to all club members.
- Next month's refreshments will be provided by Dorwin Skinner, Melodye Steverson, and Angela Bennett.
- Dorwin Skinner made a motion to adjourn the meeting, Rovie Alford seconded the motion and it was passed by all.
- The meeting adjourned at 7:30 pm.

*Minutes respectfully submitted by Secretary Melodye Steverson.*

**Withlacoochee Rockhounds  
Holiday Dinner Meeting  
January 9, 2019  
6:30 PM**

Our Holiday Dinner Meeting will be held on the second Wednesday of January. Note the time change from our regular meetings. We will have a short business meeting and then we will eat. The club will furnish the meat, beverages, plates, cups, plastic utensils, and napkins. Members are asked to bring casseroles, salads, or desserts for everyone to share. A sign up sheet will be available at the December club meeting, to help insure that we don't have too many potluck duplicates.

After the dinner, we will have Rock Bingo, a popular form of Bingo where winners are awarded gifts, often pertaining to rocks, minerals, fossils, and custom jewelry.

**The holiday dinner is for members and their families only.**

**Withlacoochee Rockhounds  
2019  
Slate of Officers**

**President: Judith Birx  
Vice President: Mark Moore  
Secretary: Melodye Steverson  
Treasurer: Janet Wheeler  
Director: Ginny Steverson (2019-2021)  
Director: Lynn Walters (2019-2021)**

We will be voting at the December meeting



## President's Message

Judith Birx



Well, as I write this, the gem show is nearly upon us. I can't wait to see the results of all the work that Ralph, John, and others who volunteered to put the show together. I would like to say that I am very proud to be part of a group of people who enjoy their hobby and/or their crafts as much as our club members. Thank you all for doing your part.

Please remember to come to the December club meeting to vote for officers and board members, and to see how well we did at the gem show. Also, we are going to have sign up sheets for the side dishes for our annual holiday dinner party in on January 9th. If you are new to the club and have not taken part in this annual event, please consider doing so. The club will purchase the meat and drinks, and the rest is up to you and me. Many members will bring wrapped gifts to play a game called Dirty Santa Bingo, aka Rock Bingo.

We will also have the new forms for your annual dues in the December Rock Talk, at the club meeting, and on our website [www.withlacoocheerockhounds.com](http://www.withlacoocheerockhounds.com). Please remember that your dues are due on January 1<sup>st</sup>.

Merry Christmas to all.



Acetylene tanks, sizes NC and B, \$50 each



Oxyacetylene welding outfit, including tanks, regulators and micro torch, \$175

## For Sale

Contact

Rovie Alford  
270-999-9144

[roviea712@yahoo.com](mailto:roviea712@yahoo.com)

- Six inch Raytach slab saw, like new, \$375
- Grit and polish available for all tumblers.
- Lortone 6 inch Expando drums for cabbing \$20 each.
- Lortone 8 inch Expando drums for cabbing \$25 each



Rotary tumblers, both single and dual barrels, \$45 to \$95 each

2) Mini Sonic vibrator tumblers, four-pound barrels, \$150 each



Two ten inch slab saws, \$300 each.

## For Sale Items

Club members can post appropriate club-related type **for sale** items in the *Rock Talk* free of charge. Contact your editors by the 25th of the month to have your items posted in the next issue.

Mike Stone

[n1ve@amsat.org](mailto:n1ve@amsat.org)

## For Sale Casting unit

Includes long casting arm, burnout oven, tongs, flasks, casting shot, casting tub, scales, charcoal stirring rods, hot gloves, plus lots of odds and ends. All can be seen at my residence. Price around \$600.00. Must see to appreciate.

Jerry Johnson  
11511 Fairfield Ct  
Spring Hill, FL 34609  
352-573-0830





Once again this last month has been busy. And once again Mark and Leslie Moore invited me to help put together another exhibit at the Yankeetown School in Levy County, Florida. When I was doing the fossil prep class last October, the students asked so many questions about dinosaurs that I decided to offer them a program about dinosaurs. We are on for this spring.

Before I knew it Mark told me that the school had found glass display cases for dinosaur fossils. Right away Mark started working on developing a special exhibit featuring actual dinosaur specimens. Between the two of us we were able to put together some spectacular fossils we knew the kids would love to study. Once again Steve and Donna Cayer from the Dinosaur Store Museum of Coco Beach came to our rescue by donating beautiful teeth of the fearsome Moroccan giant meat eaters Spinosaurus and Carcharodontosaurus for the display.

We loaded the cases with our fossils and dinosaur models on November 2<sup>nd</sup>. We were amazed at the two wonderful glass display cases the school provided for us. Both are located at the very entrance of the school library and media center. Mark obtained a fantastic 24-inch model of a Tyrannosaurus rex skeleton that is accurate in every detail. Mark also has nine dinosaur skeletal models that each student will be able to identify using various texts on dinosaurs from their library. The students will be rewarded for their research at the end of the school year.

Leslie Moore and Sue Letasi helped us set up the display. It took the four of us sever-



Dave managing the setup of the displays.



One of the glass dinosaur display cases



Spinosaurus tooth from Morocco

al hours to load the specimens, although we were temporarily interrupted by a fire alarm test scheduled for that day, all went well. The fossils varied from the Jurassic through the Cretaceous dinosaur time periods. Fossils from T. rex, the duckbilled Edmontosaurus and horned Triceratops dinosaur specimens were displayed. These came from the

same fossil deposit

Carcharodon urus tooth from Morocco



that the famous dinosaur "Sue" was discovered near Faith, South Dakota. The exhibit looks excellent, in my opinion, and should give the Yankeetown students many hours of real science work they will thoroughly enjoy. How many elementary schools have actual dinosaur fossils to study?

Once again Mark and Leslie hit a home run for science education at the Yankeetown School. I would like to thank the Yankeetown School Administrators, office staff, Library and Custodial Staff for their



Leslie and Sue behind the dinosaur displays

Continued on next page



## The David Letasi Report from page 6

assistance in making this exhibit possible for their students. Thank you Yankeetown School for allowing and supporting the success of this exhibit. Sue and Leslie, once again thank you for all your help. Steve and Donna, thank you for your continued support and the wonderful fossils that you donated for this dinosaur exhibit.

Clearly projects like this require a great deal of teamwork from several people. Fortunately our rock club has many members that contribute so much to the advancement of science, regarding geology, mineral, rocks, and fossils. At each meeting I see so many of our members becoming incredible resources in the knowledge of these sciences. As always, keep collecting and see you all at our next meeting. 🙌

## Use Our Website

I try to send an email to all members, with a link to the *Rock Talk* before the jewelry workshop, which normally is a week and a day before the club meeting.

If you don't receive an email with a link to the *Rock Talk*, you can access our website for the newsletter, club meeting program, and the project for the next Tuesday morning jewelry workshop.

Also, previous *Rock Talk* newsletters can be downloaded from our website. They have been posted from June 2016.

[www.withlacoocheerockhounds.com](http://www.withlacoocheerockhounds.com)

Editor/webmaster

## Your Favorite Specimen

We are always looking for something of interest for our club members. We're sure many club members have specimens in their collections that would be of interest to others in the club. If you would send us a digital photograph of your specimen we can publish it in the *Rock Talk*. A bit of information such as what it is, when, and where you found it would be great. If you don't have a digital camera, bring your specimen to a club meeting for others to see, and perhaps someone at the meeting could photograph it for the next issue of *Rock Talk*.

**Rock Talk editors: Mike Stone and Peggy Burns**

## Tuesday Workshop at the

### Weeki Wachee Senior Citizens' Center

Withlacoochee Rockhounds is giving workshops on wire wrapping (stones), chain making (jump rings) and possibly other related skills at the Weeki Wachee Senior Citizens' Center in Spring Hill. The workshops are normally on the **first Tuesday of the month from 9:00 AM until 12:00 noon**. The cost per workshop is \$1.00. To participate in the workshops, one must be a member of the *Withlacoochee Rockhounds*, which covers dues to the *Weeki Wachee Citizens Club*

**Weeki Wachee Senior Citizens' Center.**

**3357 Susan Dr.**

**Spring Hill FL 34606**

For more information call Judith at: 352-587-1702

### Next Workshop

**December 4th at 9:00 AM**

**Jewelry class will again be working with colored polymer clay to making pendants and beads. The cost for material is \$5.00 per participant. No charge for those who need to buy clay.**

## Gail's Gift Hut

Club members Randy and Gail Ericson have moved their business located in Howards Flea Market in Homosassa at 6373 S Suncoast Blvd, Homosassa, FL 34446 (Gail's Gift Hut) to the main isle on the east end of the big building. Their inventory of rocks and minerals has increased and their prices are reasonable. Check them out on Facebook and also view this video.

<https://www.youtube.com/watch?v=m0sAtEQulns>

Howard's Flea Market is open Saturday and Sunday from 7:00 AM until 3:00 PM.



LIKE US ON FACEBOOK

[facebook.com/gailsgifhut](https://facebook.com/gailsgifhut)

ROCKS, CRYSTALS, JEWELRY, TAPESTRIES,  
OILS, AND MUCH MORE

## Gail's Gift Hut

[gailsgifhut@gmail.com](mailto:gailsgifhut@gmail.com)

FIND US ON ETSY  
[etsy.com/shop/gailsgifhut](https://etsy.com/shop/gailsgifhut)

Howards Flea Market

M 13,15,17,19

HOMOSSASSA, FL. 34446

## Dues Will Soon be Due

The club year runs from January to January, so it's almost time to sign up for the next club year. Janet, our treasurer, will be accepting membership forms and payments at the club meetings, or you can send the form and your check to:

**Withlacoochee Rockhounds**

**PO Box 5634**

**Spring Hill, FL, 34611-5634**



Rock Art



2.5 Pound Emerald

The world's largest producer of green stones has unearthed a 5,655-carat emerald crystal at its mines in Zambia. The stone, which weighs more than 1.1 kg (almost 2.5 lbs.), was found at the Gemfield Mines in Kagem. The emerald is being called "Inkalamu," which means "lion" in the local Zambia Bemba language. It will be cut into smaller pieces and was due to be auctioned in Singapore in November. It has "remarkable clarity and a perfectly balanced golden green



hue

The stone was found in an open mine in October by a geologist and an emerald miner.

Emeralds are rare and more valuable than diamonds, driving their demand in the market. Most of the world's emeralds are mined in Zambia, Colombia, and Brazil.

The gem is not the largest emerald stone to have been found at this location. In 2010, miners found a 6,225-carat emerald they named "Elephant" due to its massive size.

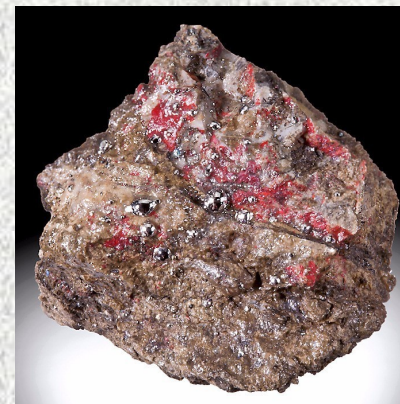
Show Us Your Stuff

We're always looking for information for the *Rock Talk*. Club members would enjoy seeing other members' rock cutting and polishing equipment, display cabinets, projects, and favorite specimens. Take a photo and send it to your editors along with a description and we will be glad to include it in our newsletter.

Mike Stone  
n1ve@amsat.org

What is It?

Can you identify the specimen below?



Answer in this *Rock Talk*.

Last month's "What is It?"

Sapphire Crystal



Cinnabar (ore of mercury)



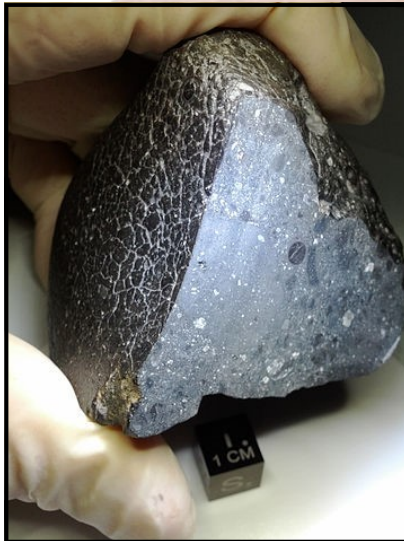
# Mars Rocks

by Mike Stone

Now that Mars is in the news again, I figured it would be a good time to mention a few facts about Mars.

The Earth has been battered over the eons by chunks of material from the planet Mars. Asteroids and comets impact Mars and some debris that has been ejected from the impact eventually crashes into the Earth, becoming Martian meteorites.

*“These meteorites are thought to be from Mars because they have elemental and isotopic compositions that are similar to rocks and atmosphere gases analyzed by spacecraft on Mars. In October 2013, NASA confirmed, based on analysis of argon in the Martian atmosphere by the Mars Curiosity rover, that certain meteorites found on Earth thought to be from Mars were indeed from Mars.”* Wikipedia



Martian meteorite called “Black beauty

That suggests that we can collect rocks from Mars here on Earth, but what would it be like collecting rocks on Mars?

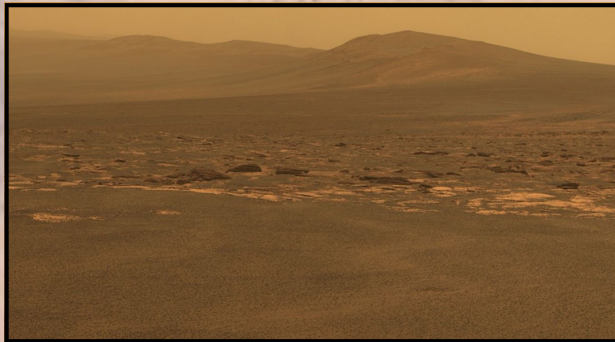
The atmosphere of the planet Mars is composed mostly of carbon dioxide. The atmospheric pressure on the Martian surface averages about 0.6% of Earth's mean sea level pressure of 14.69 pounds per square inch. The lack of oxygen and the low atmospheric pressure would require wearing of a space suit.

At noon in the summer, the temperature of Mars can reach 70 degrees Fahrenheit, but on the

average the temperature on Mars is about minus 80 degrees Fahrenheit. The space suit would need a means of providing plenty of heat.

Since Mars has less mass than Earth, the surface gravity on Mars is less than the surface gravity on Earth. The surface gravity on Mars is only about 38% of the surface gravity on Earth, so if you weigh 100 pounds on Earth, you would weigh only 38 pounds on Mars. Carrying that twenty-five (Earth) pound rock specimen would be much easier on Mars, because it would only weigh about 9.5 pounds. But carrying the rock while wearing a space suit might be cumbersome.

Since Mars is one-and-a-half times farther from the sun than Earth, the sun appears correspondingly smaller in the planet's dusty sky. Forget about using the bright sunshine to help spot interesting rocks; it would be like collecting during the afternoon on a slightly overcast day on Earth.



A caramel colored, dusty Martian sky.

Without a global magnetic field on Mars because of the lack of a rotating liquid core, radiation bombards the planet, making it relatively inhospitable compared to Earth. So we'd need some means to protect ourselves from deadly radiation.

What are rocks like on Mars?

Until man has spent time collecting and identifying Martian rocks, we will never know

for sure what type of rocks lie under the layer of dust that covers much of the planet. But information and images sent back to Earth from the various exploration devices suggests that basalt makes up much of the Martian surface. There is also evidence of erosion, because photos have been taken of rounded rocks in what is believed to be bedrock, made up of a sedimentary conglomerate.

Of course, human made machines haven't scratched the surface of Mars to any great degree. However, the probe “InSight” that recently landed on Mars will be used by scientists to drill a sixteen-foot deep hole into the surface of Mars to help determine what Mars is made of and how it has changed since it formed more than four billion years ago. The results could help solve the mystery of how the Red Planet became the dry, desolate world we know today.

Information from [www.wikipedia.org](http://www.wikipedia.org), [www.washingtonpost.com](http://www.washingtonpost.com), [www.space.com](http://www.space.com), [en.wikipedia.org](http://en.wikipedia.org),



This bedrock appears to be made up of sedimentary rock.



# Withlacoochee Rockhounds



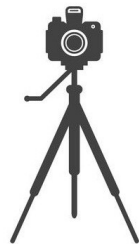
**Bench Tips**  
by  
**Brad Smith**



*Bench Tips for Jewelry Making and Broom Casting for Creative Jewelry are available on Amazon*

## Take a Better Photo

Most digital cameras these days have the ability to take a good picture of your small jewelry items, but set-up is important. There are four major factors to control - background, lighting, camera motion, and focus.



Light colored papers from an art store make reasonable starter backgrounds. Try experimenting with other products like glass or colored plastics. Avoid fabrics because the weave can often be distracting at high magnification.

Outside lighting is the easiest. In fact for close-ups, the flash never works well. Turn off your camera's flash. Choose a bright but overcast day or a lightly shaded area when the sun is full. For inside use, two gooseneck desk lamps can be used with 75-watt bulbs. Whatever you use, be sure to set the camera to match the type of lighting you use or else the colors will be off.

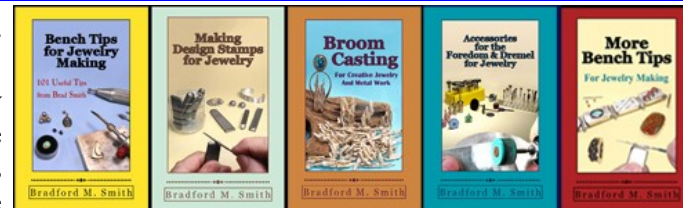
You'll be shooting up close, so turn on the macro mode. At close range, if the camera moves even a little bit during the shot, the picture will be blurry, so it is essential to use a tripod. Used ones are available inexpensively from eBay, yard sales, or some camera shops. And even with a tripod I put the camera on the self-timer mode so that any vibration created when

you click the button settles down before the camera takes a picture.

In order to get the largest part of your jewelry in focus, you have to close the lens down to the minimum aperture (highest F-Stop number). This is done by taking the camera off of "Auto" mode and selecting Aperture Priority, usually denoted by "Av" and then setting the aperture to the largest number, which is F-8 on my camera. You'll probably have to get out the book or go back to the store to ask how to do this, but it's really worth it.

That's it. Recapping, here are the camera settings that I use:

- Set the lens to macro for a close-up shot.
- Turn off the camera flash.
- Move the camera close enough for the subject to cover at least 3/4 of the frame.
- Look for adverse reflections from the jewelry surface.
- Try to minimize reflections with changes of light position, camera angle, or white background paper.
- Carefully check for any fingerprints or dust that might be on the piece.
- Make any final tweaks with light and arrangement.
- Select "Av" for aperture priority mode.
- Set the lens opening to the highest number (smallest aperture) to get the maximum depth of field.
- Adjust the lighting setting on the camera to match the light that you are using (daylight, overcast, light bulb, fluorescent, etc.).
- Set the timer for delayed shooting, either 2 seconds or 10 seconds, to avoid camera movement. The delay also gives you time to hold up a piece of white paper to adjust lighting or reduce any final reflections.
- Set the image size to the maximum resolution.
- You can image size it down later, but you can never increase the resolution after.
- Take the shot.



Learn New Jewelry Skills With Brad's  
How-To-Do-It Books  
[Amazon.com/author/bradfordsmith](https://www.amazon.com/author/bradfordsmith)

## Upcoming Gem and Mineral shows

**12/1/18—12/2/18**-Miami Mineralogical & Lapidary Guild Evelyn Greer Park

**1/11/19— 11/13/19**-Pinellas Geological Society 3 Annual Gem, Mineral and Jewelry Show, 105 Central Park Drive, Central Park Performing Arts Center

**2/2/19—2/3/19**-Central Brevard Rock and Gem Club Kiwanis Recreation Center



Hernando County, FL



# Withlacoochee Rockhounds

## Membership Form

\_\_\_\_\_

**Annual Dues:** Individual member, \$20. 00. Under 18 years of age, \$5.00.  
Check if new member

Please Print Clearly

Last name \_\_\_\_\_ First Name \_\_\_\_\_  Check if under 18

Renewing members check here if no change in the information below.

Street Address:

City

State

ZIP

Phone Number (s)

Email address:

Give this completed form along with your check for dues made out to  
"Withlacoochee Rockhounds" to club secretary Janet Wheeler at a  
club meeting. Or mail the form and your check to:

Withlacoochee Rockhounds  
PO Box 5634  
Spring Hill, FL 34611-5634



# Rock Talk

**Withlacoochee Rockhounds**

Our monthly club meeting is held at the Weeki Wachee Senior Citizens Club, 3357 Susan Dr., Spring Hill, FL 34606, on the 2nd Wednesday of each month from 7:00 to 9:00 PM



of  
Hernando County

[www.withlacoocheerockhounds.com](http://www.withlacoocheerockhounds.com)

## Your Business Card Size Ad in Rock Talk

The cost to advertise your businesses in *Rock Talk* is \$10.00 per month. . Contact Mike Stone to set up an ad in both the club newsletter and our website. It will benefit both your business and our club.

## Advertisers Needed

Please help us find advertisers for the *Rock Talk* and our website. The club can use the monthly income. Both the *Rock Talk* and our website have more exposure than only club members. Any club member who takes out a yearly ad, gets a **free club membership**.

Contact club treasure Janet Wheeler: [ceecgirl@tampabay.rr.com](mailto:ceecgirl@tampabay.rr.com) or send to:

**Withlacoochee Rockhounds**  
PO Box 5634  
Spring Hill, FL 34611-5634

**Withlacoochee Rockhounds**  
PO Box 5634  
Spring Hill, FL 34611-5634

## Withlacoochee Rockhounds

### Purpose

We are a non-profit organization whose purpose is to foster interest and promote knowledge of minerals, gems, fossils, lapidary arts, and earth sciences, through regular meetings, informative programs, workshops, and field trips. PLUS our annual gem and mineral and jewelry show. Membership is open to anyone sharing such interests.

### Dues

Dues are \$25.00 annually for a family and \$15.00 annually for a single member

### Club Meeting Location and Time

Weeki Wachee Senior Citizens Center, 3357 Susan Drive in Spring Hill. The meetings are held on the second Wednesday of the month at 7:00 PM.

## 2018 Club Officers

President.....	Judith Birx.....	352-587-1702.....	<a href="mailto:judithbirx@hotmail.com">judithbirx@hotmail.com</a>
Vice President.....	Kelly Johnson.....	352-688-9399.....	<a href="mailto:KellyMineralsFossils@aol.com">KellyMineralsFossils@aol.com</a>
Secretary.....	Melodye Steverson.....	352-683-9496.....	<a href="mailto:melodye@designsbymelodye.com">melodye@designsbymelodye.com</a>
Treasurer.....	Janet Wheeler.....	727-938-3644.....	<a href="mailto:ceecgirl@tampabay.rr.com">ceecgirl@tampabay.rr.com</a>
Rock Talk Editors.....	Mike Stone / Peggy Burns.....	603-524-0468.....	<a href="mailto:n1ve@amsat.org">n1ve@amsat.org</a>
Club Web Master.....	Mike Stone.....	603-524-0468.....	<a href="mailto:n1ve@amsat.org">n1ve@amsat.org</a>
Mailing Reporter.....	Janet Wheeler.....	727-938-3644.....	<a href="mailto:ceecgirl@tampabay.rr.com">ceecgirl@tampabay.rr.com</a>
Gem Bag Coordinator.....	Gloria DuPont.....	352-848-5199.....	<a href="mailto:ddupont@tampabay.rr.com">ddupont@tampabay.rr.com</a>
Audio/Visual Coordinator.....	Michael Steverson.....	407-376-5570.....	<a href="mailto:highlander56@gmail.com">highlander56@gmail.com</a>

### Board of Directors

Rovie Alford (2018)  
Ralph Barber (past president)  
Judith Birx (president)  
Linda Spaulding (2020)

Melodye Steverson (secretary)  
Dorwin Skinner (2020)  
Mike Stone (2019)  
Janet Wheeler (treasurer)