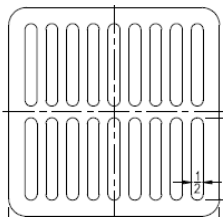
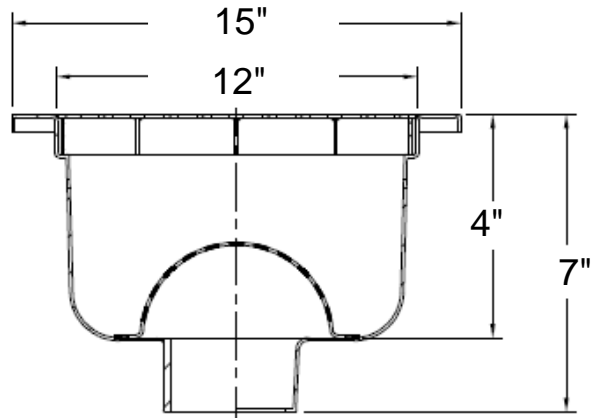
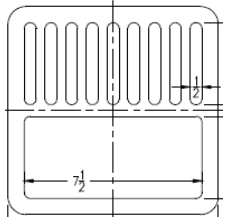


# WICKETTS STAINLESS SPECIFICATION

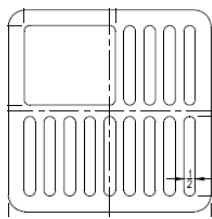
WFS-1212-4 Deep  
SS FLOOR SINK



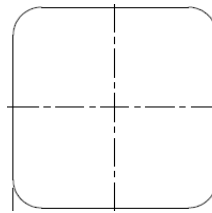
FS  
FULL SLOTTED



HS  
HALF SLOTTED



3Q  
THREE QUARTED  
SLOTTED



SG  
SOLID GRATE



PDG  
PERIMETER  
DRAINAGE GRATE

**Engineering Specification:** 16 GA. 304 Stainless Steel 12 X 12 Floor Sink 4" Deep;

Interior To Be Radius & Polished. 2", 3", 4" Outlet. Meets ASME A112.19.3

Wicketts Stainless, LLC. 2618  
San Miguel DR. Bldg.# 376  
Newport beach, CA 92660  
Tel: 951-858-2548  
Fax: 951-638-9059  
www.wickettsstainless.com  
Sales@wickettsstainless.com



Approved for Manufacturing

Company: \_\_\_\_\_

Signature: \_\_\_\_\_

Print: \_\_\_\_\_ Date: \_\_\_\_/\_\_\_\_/\_\_\_\_

NON-CANCELABLE

NON- RETURNABLE