

*Town and Country Decorative Painters  
presents its 29<sup>th</sup> Annual Retreat*

## **April Showers Bring May Flowers**



*April 23—26, 2026  
Thursday through Sunday*

*Painting on your own  
Monday through Wednesday*

## **Town & Country Decorative Painters 2026 Retreat**

### **April Showers Bring May Flowers**

April 23<sup>rd</sup> – April 26<sup>th</sup>

Each spring, we welcome brighter blue skies and greener landscapes. It is with warmth that TCDP welcomes you to join us in washing away the dreary and bringing on the cheery through painting.

The fun sprouts on Thursday afternoon and blooms with our banquet on Sunday. Saturday evening, our social event “Get Down and Dirty,” begins with planting a succulent and includes games, prizes, and refreshments. Our contest this year is to paint an umbrella. Details of those activities can be found on page 8.

We have 25 exciting projects to offer, and we are blessed to have 15 talented and dedicated teachers.

So put on the gumboots, bring your umbrella, and join us for a wonderful weekend of joyful painting.

Wendy Cornman and Janine Stiffler  
Retreat Co-Chairs

## **2026 Retreat Committee**

Retreat Co-Chairs	Wendy Cornman/Janine Stiffler
Teacher Co-Chairs	Dot Hoffman/Barb Leffler
Co-Treasurers	Fran Deah/Jennifer Calvin
Registration Co-Chairs	Fran Deah/Jennifer Calvin
Booklet	Dot Hoffman
Nametags	Karen Schnelle
Raffle Tickets/Tailgate Sale	Fran Deah/Jennifer Calvin
Monitors, Large Raffle	Wendy Cornman, Janine Stiffler, Charlette Stiffler, & Deb Laney
Set-up Chairs	Carrie Pizer and Stephanie
Hospitality	Vickie Kennedy
Banquet	Retreat Committee



## Retreat Information

### Location:

Crestfield Camp and  
Conference Center  
195 Taggart Road  
Slippery Rock, PA. 16057

### Registration

Registration is in the hallway entrance from the parking lot at Crestfield. You can pull in the circle, unload your car, and then move your car to the parking lot.

We are once again offering extra days, Monday through Wednesday, for people to check in and bring their paints and projects. Meals on these days will be strictly on your own, but there are places to eat nearby. We will have use of the "Spirit of the Glen" building and the Scott conference room to paint. Classes will be offered on Thursday, Friday, Saturday, and Sunday. Registration begins Wednesday at 1:00 PM. Registration opens Thursday at 7 AM and closes on Sunday at 9:30 AM. During check-in, you will receive your name-tag, settle your account if need be, and sign up for seating for Sunday's banquet. You must check in prior to going into the class area. If you are staying at Crestfield, you will also receive your room key at the registration desk.

### Hospitality Room

Stop by if you are not in class. Water and small snacks will be available for those who need it. You'll also find some great treasures for sale by other attendees.



## LODGING INFORMATION

**Crestfield Camp and Conference Center**  
195 Taggart Road, Slippery Rock, PA. 16057  
724-794-4022  
[registrar@crestfieldcc.org](mailto:registrar@crestfieldcc.org)

- ◆ All accommodations are in **Scott Lodge**.
- ◆ Rooms are either 2 twin beds or 2 twin beds and a queen.
- ◆ There is free WiFi
- ◆ Rooms have their own private bathroom, a small dresser, and a table with chair.
- ◆ Everything is on one level, no stairs to climb.
- ◆ In the lodge there is a sitting room and a small conference room with tables for those night owls who find themselves awake in the wee hours and wish to paint or read and not disturb their roommates.
- ◆ Linens and towels will be provided.

Single and Double rooms are \$94.50 per night. A single person in a 2-bed room will pay \$94.50 per night. Two people would each pay \$47.25 per night.

Triple rooms are \$105 per night. If you have two people in a triple room, the charge would be  $\$105/2=\$52.50$ . If you have three people in a triple room, the charge would be  $\$105/3=\$35$  per night.

We also have Crestfield Package Deals that combine rooms and meals in a variety of ways. Information on these packages is under **Crestfield Packages** on page 10 of this booklet.



**We must know with whom you are rooming.**  
**Please note that on the registration form.**

Meals are served in the dining hall in the main building, just a short walk on the covered walkway from Scott Lodge.

Meals are \$13.00 each. Please add \$3.50 if you would like dessert with any dinner.

We will offer dinner on Thursday, 3 meals on Friday and Saturday, and breakfast on Sunday for a total of 8 meals or \$104.00. However, room and meal packages are available. See page 10.

**MEALTIMES ARE:**

**7:30 A.M. Breakfast - 12:30 P.M. Lunch**

**5:00 P.M. Dinner**

**Breakfast is Friday, Saturday, and Sunday only.**

**Coffee and light refreshments will be available in the registration/hospitality area daily. A refrigerator and microwave are available for your use. Lunches on Friday and Saturday will be a Soup & Salad bar!**

**Cancellations for lodging and meals must be received by March 26, 2026.**

**Registration will be in the lobby at Scott Lodge. Hospitality and classes will be held in "The Spirit of the Glen"- which is a short walk on a paved path from Scott Lodge. There will also be classes in the conference room in Scott Lodge.**

**Class Registration Information**

1. You do not need to be a member of TCDP to attend the retreat.
2. You must use the form provided (or a copy) to register. Please send your registration form with a check to cover all fees to TCDP, % Fran Deah, 2284 Ferguson Road, Allison Park, PA 15101, 412-491-9978, fdeah@msn.com. PLEASE MAKE ALL CHECKS PAYABLE TO TCDP.

3. All fees are to be paid at the time of registration. **Along with your registration fee, you must include the teacher fees (4 or 6 hour class). Do not include the project fee. That is to be paid to the teacher the day of the class.**
4. Enclose a self-addressed, stamped envelope or e-mail address with your registration. Class confirmations will be returned by snail mail if a self-addressed envelope is provided, otherwise, confirmations will be emailed.
5. We are offering a one-day registration for people who can only attend one day of retreat. The one-day registration fee is \$15.00 (\$20.00 after the March 26, 2026 deadline). If you choose to attend only on Sunday and wish to stay for the banquet, please note that the registration fee remains \$40.00 to cover the cost of the banquet.
6. Only those registered for the retreat may take classes. Your multi-day registration fee includes the Sunday banquet. Banquet tickets are non-transferable.
7. List your classes in the order of preference. You will be given your second choice only if your first choice is unavailable.
8. Refunds will be made for classes which are cancelled due to insufficient enrollment.
9. Refunds will be made to those who cancel their attendance provided a written request is made prior to March 26, 2026.
10. Additional classes may be purchased at the registration desk at the retreat, if available.
11. A late fee of \$5.00 will be charged if registering after March 26, 2026.
12. If you plan to arrive before Wednesday, you must make arrangements with Crestfield directly for those nights.
13. TCDP and/or its teachers will not be responsible for any person's allergic reaction to class materials.

14. If you are taking classes and are NOT staying at Crestfield, you will be charged a \$15 per day facility usage fee.
15. Please be sure to note dietary restrictions on the registration form.
16. Sunday lunch is included with your registration.
17. Crestfield is a smoke-free facility. Please use the designated smoking areas.
18. **Our contract with Crestfield includes prohibition of firearms, alcohol, fireworks, or illicit drugs.**
19. Remember to bring your usual painting supplies. Brushes, palette paper, paper towels, brush cleaner, water container, etc. If your class is in oils, you must use ODORLESS TURP, if needed.
20. The project fee covers a prepared surface, pattern, instructions, photograph, and paint/medium to be used in the class.
21. **Please do not request a class beyond your skill level. This will cause a hardship for you, the teacher, and other students. Please be considerate of others.**
22. Thanks to Carrie Pizer for the cover painting. Also thank you to clip-artlibrary.com for the clipart.
23. All due diligence was exercised in obtaining permission to teach designs offered in classes.

For questions regarding registration information, contact Fran Deah, 412-491-9978, or email her at [fdeah@msn.com](mailto:fdeah@msn.com) .



**Raffle Items:** Each teacher has graciously donated an item created by them to be offered as a raffle item. We will also have a 50/50 raffle each day. All tickets will be available for purchase in the cafeteria at the lunch/dinner meals.

**Class Times:** The 6-hour classes have a 90-minute dinner break. The 4-hour classes do not have a break.

**Taco Bar Lunch on Thursday:** A complementary taco bar lunch will be held for anyone who is at the retreat on Thursday at 12:00 PM.

**Sunday Banquet:** After a weekend of painting, join us for the closing banquet at 1:00 PM on Sunday. Luncheon will be served at 1:30, and the prize drawings will take place immediately after.



## Saturday Night Get Down and Dirty

Join us Saturday evening from 6:00 – 10:00 PM for fun and games. We had such a fun time last year, that we are offering some down time again that included games, snacks, and – since it's spring– a chance to plant something and Get Down and Dirty. Just bring a small container like a coffee mug size, and we will provide succulents, soil, and everything else. If your container has a drainage hole, that's great. If not, we'll have the stones for the bottom.

Be sure to mark on your registration form if you will be planting a succulent with our resident master gardener, Wendy. We hope to see you for fun and a chance to grow in fellowship and in gardening skills!



## Paint an Umbrella Contest

Calling all imaginative artists! We invite you to enter this year's painting contest by painting an umbrella! We suggest you use DecoArt SoSoft paints, but you could use another brand or use fabric medium with your acrylics. Umbrellas will be on display, and everyone will get one vote. Be sure to vote by Saturday night, when the big winner of a fabulous gift basket will be announced! (Check out Pinterest if you can't think of an idea.)



### BONUS

Bring a "new" friend to retreat and you will each receive a surprise. Registered "new" friends must not have attended our retreat in the last two years. You must also mention your registered friend at check-in to receive your surprise.



### Tailgate Sale

There will be a tailgate sale in the hospitality room starting Thursday morning. Come and sell your extra supplies and pick up some bargains!

## Crestfield Packages

Crestfield has been kind enough to offer us packages that combine rooms and food at a discount if you stay 3 or more nights. There are several options. You just have to decide:

- ◆ how many nights are you staying?
- ◆ how many people will be in your room?
- ◆ how many (and which) meals will you be eating?



### Crestfield Packages Per Person

If you have some other combinations that you want, they are NOT part of these package deals and will be priced per day on the rooms and \$13 per meal (\$16.50 for dinner with dessert.)

THREE NIGHTS	SINGLE	DOUBLE	TRIPLE
4 MEALS	\$286	\$181	\$155
5 MEALS	\$299	\$194	\$167
6 MEALS	\$311	\$206	\$180
7 MEALS	\$324	\$219	\$193
8 MEALS	\$336	\$231	\$205

FOUR NIGHTS	SINGLE	DOUBLE	TRIPLE
5 MEALS	\$351	\$220	\$183
6 MEALS	\$364	\$233	\$196
7 MEALS	\$376	\$245	\$208
8 MEALS	\$389	\$258	\$221

## Thursday 6-Hour Classes 1:30-4:30 and 6:00-9:00

### Olivia

Teacher: Janine Stiffler

Medium: Colored pencil

Level: Beginner

Surface: Suede board

Surface Size: 8"x10"

Special Supplies: Pencil sharpener

Project Cost: \$22 includes mat

Designed by: Janine Stiffler



### Mountain Chickadee and Poppies



Teacher: Monica Schallenberger

Medium: Water mixable oil

Level: Beginner

Surface: Masonite

Surface Size: 8"x10"

Special Supplies: oil brushes-liner, #2,4,6 flats, round, paper towels, brushes will be available for sale

Project Cost: \$12

Designed by: Sherry C. Nelson

## Thursday 6-Hour Classes 1:30-4:30 and 6:00-9:00



### Blue Bachelor Buttons Still Life

Teacher: Carol Hoffman

Medium: Water mixable oil

Level: Intermediate

Surface: Canvas

Surface Size: 8"x10"

Special Supplies: detail, good flats

# 4,6,8,10, #3 round, liner, mop

Project Cost: \$20

Designed by: Carol Hoffman, BFA, CDA

### Easter Eggs

Teacher: Rosemary Habers

Medium: Acrylic

Level: All

Surface: Paper maché box

Surface Size: 6"x6"x4"

Special Supplies: Regular supplies

Project Cost: \$15

Designed by: Marsha Wiser



### Christmas Truck

Teacher: Rosann Wagner

Medium: Acrylic

Level: Intermediate

Surface: Wooden saw blade

Surface Size: 6.5" diameter

Special Supplies: Stencil brush, regular acrylic supplies

Project Cost: \$25

Designed by: Liz Vigliotto



## Friday 4-Hour Classes 8:00 AM-12:00 PM

### *A New Day*

Teacher: Fran Deah

Medium: Acrylic

Level: Beginner/intermediate

Surface: Canvas

Surface Size: 11"x14"

Special Supplies: Flats, liner, foliage brush or sea sponge or 1/4" deerfoot

Project Cost: \$12

Designed by: Fran Deah



### *Hanging Basket- Learning the Basics*

Teacher: Janine Stiffler

Medium: Reed

Level: Beginner

Surface: Basket

Surface Size: 5"x5"x6"

Special Supplies: Scissors, towel, 12 clothespins or zip ties, pencil, ruler, spray bottle, small bucket, sponge, butter knife, flat screwdriver, masking tape

Project Cost: \$20, ONLY 12 STUDENTS

Designed by: Janine Stiffler

### *Indian Corn*

Teacher: Dot Hoffman

Medium: Acrylic

Level: Beginner

Surface: Wood

Surface Size: 11"x14"

Special Supplies: 3/4" oval wash, #2, 5 rounds, #6, 10 filberts, 1/4"-1/2" angles, stencil brush,

Project Cost: \$15

Designed by: Chris Haughey



## Friday 4 Hour Classes 8:00 AM-12:00 PM

### Grounded



Teacher: Carrie Pizer

Medium: Watercolor

Level: Beginner

Surface: 300 lb cold press paper

Surface Size: 11"x14"

Special Supplies: Rounds #2, 8, 12  
and a liner

Project Cost: \$20

Designed by: David Bailey

### Denver Mountains

Teacher: Carol Hoffman

Medium: Water mixable oils

Level: Intermediate

Surface: Canvas

Surface Size: 11"x14"

Special Supplies: Bristle #6, 8, fan,  
mop, #4 filbert

Project Cost: \$28

Designed by: Carol Hoffman, BFA,  
CDA, from *Ohio Magazine*





## Friday 6-Hour Classes 1:30-4:30 and 6:00-9:00

### Bleeding Hearts

Teacher: Lynne Banting

Medium: Watercolor

Level: Intermediate

Surface: 300# watercolor paper

Surface Size: 8"x10"

Special Supplies: Regular watercolor supplies, sea sponge

Project Cost: \$20

Designed by: Lynne Banting



### Puffin

Teacher: Monica Schallenberg

Medium: Colored Pencil

Level: Beginner

Surface: Stonehenge paper

Surface Size: 11"x14"

Special Supplies: Pencil sharpener, kneaded eraser, white eraser

Project Cost: \$22, includes pencils

Designed by: Monica Schallenberg



### Deep Red Poppies

Teacher: Gail Bodkin

Medium: Water mixable oils

Level: Intermediate/Advanced

Surface: Stretch canvas

Surface Size: 11"x14"

Special Supplies: Regular oil supplies

Project Cost: \$25

Designed by: Gail Bodkin



## Friday 6-Hour Classes 1:30-4:30 and 6:00-9:00

### Amish Sewing Girls



Teacher: Mary Ann Yurus

Medium: Acrylic

Level: Intermediate

Surface: Canvas frame

Surface Size: 12"x12"

Special Supplies: Regular painting supplies

Project Cost: \$20

Designed by: Helen Barrick

Teacher: Laura Angelo

Medium: Acrylic

Level: Intermediate

Surface: Arched wood plaque

Surface Size: 12"

Special Supplies: 1/4" filbert comb, 10/0 liner, and regular supplies

Project Cost: \$ 20

Designed by: Donna Hodson, CDA

### Bunny in Violets





*Saturday 6-Hour Classes 8 AM–12 PM*  
*and 1:30-3:30 PM*

## *Tote Basket with Wooden Base*

Teacher: Janine Stiffler

Medium: Reed

Level: **Intermediate**

Surface: Basket

Surface Size: 11"x10"x10"

Special Supplies: Scissors, towel, 12 clothespins or zip ties, pencil, ruler, spray bottle, small bucket, sponge, butter knife, flat screwdriver, masking tape

Project Cost: \$35, ONLY 12 STUDENTS

Designed by: Janine Stiffler



## *Farmhouse Chair*

Teacher: Gail Bodkin

Medium: Pen & Ink, acrylic

Level: All

Surface: Multimedia paper

Surface Size: 11"x14"

Special Supplies: Micron pen size 05, #1 liner, acrylic brushes

Project Cost: \$20

Designed by: Mary Owens

*Saturday 6-Hour Classes 8 AM–12 PM*  
*and 1:30-3:30 PM*

*Cozy Bunny*



Teacher: Rosemary Habers

Medium: Acrylic

Level: All

Surface: Wood box

Surface Size: 10"x17"x2"

Special Supplies: Regular acrylic supplies

Project Cost: \$20

Designed by: Lydia Steeves

Teacher: Lynne Banting

Medium: Watercolor

Level: Intermediate

Surface: 300# watercolor paper

Surface Size: 11"x14"

Special Supplies: regular watercolor supplies, sea sponge

Project Cost: \$23

Designed by: Lynne Banting

*Sunset Lawn*



*Saturday 6-Hour Classes 8 AM–12 PM  
and 1:30–3:30 PM*

*Lemons with  
Gold Leaf*



Teacher: Dot Hoffman

Medium: Acrylic/gold leaf

Level: Intermediate

Surface: Wood box

Surface Size: 4"x13.5"x3.5"

Special Supplies: 3/4" oval wash, #5 round, script liner, 1/8", 1/4", 1/2" angles, #4-8 filberts, mop, good 1/2" flat

Project Cost: \$28

Designed by: Dot Hoffman

*Sunday 4-Hour Classes 8:00 AM–12:00 PM*



*Dotted Heart  
Stone*

Teacher: Jeanne Delbusso

Medium: Acrylic

Level: Beginner

Surface: Stone heart

Surface Size: 4"

Special Supplies: stylus and regular supplies

Project Cost: \$20, if you already have the set of crochet hooks from a previous class, deduct \$6

Designed by: Jeanne Delbusso

## Sunday 4 Hour Classes 8:00 AM-12:00 PM

### Xmas Snowman



Teacher: Carol Hoffman

Medium: Water mixable oils

Level: Intermediate

Surface: Canvas

Surface Size: 10"x10"

Special Supplies: Detail flats #4, 6, 8, 10, liner, #8 hog hair

Project Cost: \$22

Designed by: Carol Hoffman, BFA, CDA

### Lily Jewel Box

Teacher: Lynne Banting

Medium: Oil over fully prepared surface

Level: Beginner

Surface: Wood

Surface Size: 6"x8"x2.75"

Special Supplies: #2, 6-8 sable, liner

Project Cost: \$22

Designed by: Lynne Banting



## Sunday 4 Hour Classes 8:00 AM–12:00 PM

### *Rainy Night*

Teacher: Linda Lineman

Medium: Acrylic

Level: Beginner

Surface: Wood

Surface Size: 8"x12"

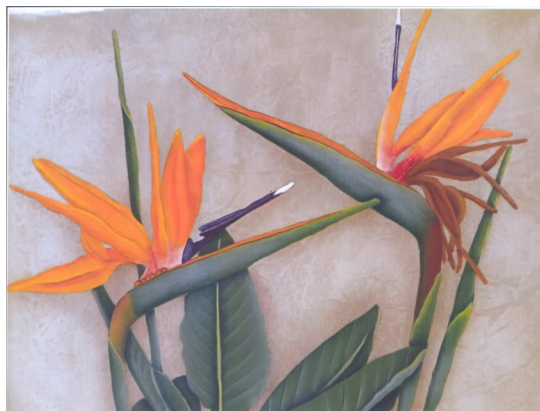
Special Supplies: Regular painting supplies

Project Cost: \$20

Designed by: Linda Lineman



### *The Birds*



Teacher: Karen Schnelle

Medium: Acrylic

Level: Beginner/Intermediate

Surface: Canvas panel

Surface Size: 8"x10"

Special Supplies: Regular painting supplies

Project Cost: \$12

Designed by: Karen Schnelle

**To see larger photos with more detail, visit our website  
and browse our book online (pdf file.)**

**[www.townandcountrydecorativepainters.com](http://www.townandcountrydecorativepainters.com)**

**Extra registration forms are available online.**  
**Invite a friend!**





## THANK YOU

Many, many thanks to the wonderful teachers who will be sharing their knowledge and talents with us at the retreat. We so appreciate their efforts to help us grow in our painting skills.

Laura Angelo  
Lynne Banting  
Gail Bodkin  
Fran Deah  
Jeanne Delbusso  
Rosemary Habers  
Carol Hoffman  
Dot Hoffman

Linda Lineman  
Carrie Pizer  
Karen Schnelle  
Monica Schallenberger  
Janine Stiffler  
Rosann Wagner  
Mary Ann Yurus

### Join us!

Town and Country Decorative Painters meetings for 2026 will be on February 1, March 22, June 7, August 2, October 4, and December 6 at the American Legion Post 683, 754 North Pike Road (Rt 356) in Cabot, PA. We have wonderful projects taught at 5 meetings each year, including a class for new painters in February. February is also our service project month, and December is a Make-It-Take-It meeting. For more information about the club, visit our website [www.townandcountrydecorativepainters.com](http://www.townandcountrydecorativepainters.com) or contact our president, Linda Lineman, at 814-671-6502, or email her at [lpnchina@gmail.com](mailto:lpnchina@gmail.com).

## 2026 Retreat Schedule of Classes

THURSDAY 1:30– 9 PM	FRIDAY 8-12	FRIDAY 1:30-9 PM	SATURDAY 8 AM-12 and 1:30-3:30 PM	SUNDAY 8-12
<b>Olivia</b> Janine Stiffler	<b>A New Day</b> Fran Deah	<b>Bleeding Hearts</b> Lynne Banting	<b>Tote Basket, Wooden Base</b> Janine Stiffler	<b>Dotted Heart Stone</b> Jeanne Delbusso
<b>Mountain Chickadee &amp; Poppies</b> Monica Schal- lenberger	<b>Hanging Bas- ket, Learn the Basics</b> Janine Stiffler	<b>Puffin</b> Monica Schal- lenberger	<b>Farmhouse Chair</b> Gail Bodkin	<b>Xmas Snow- man</b> Carol Hoffman
<b>Blue Bachelor Buttons Still Life</b> Carol Hoffman	<b>Indian Corn</b> Dot Hoffman	<b>Deep Red Poppies</b> Gail Bodkin	<b>Cozy Bunny</b> Rosemary Habers	<b>Lily Jewel Box</b> Lynne Banting
<b>Easter Eggs</b> Rosemary Habers	<b>Grounded</b> Carrie Pizer	<b>Amish Sewing Girls</b> Mary Ann Yurus	<b>Sunset Lawn</b> Lynne Banting	<b>Rainy Night</b> Linda Lineman
<b>Christmas Truck</b> Rosann Wagner	<b>Denver Mountains</b> Carol Hoffman	<b>Bunny in Violets</b> Laura Angelo	<b>Lemons with Gold Leaf</b> Dot Hoffman	<b>The Birds</b> Karen Schnelle



Fran Deah  
2284 Ferguson Road  
Allison Park, PA 15101