



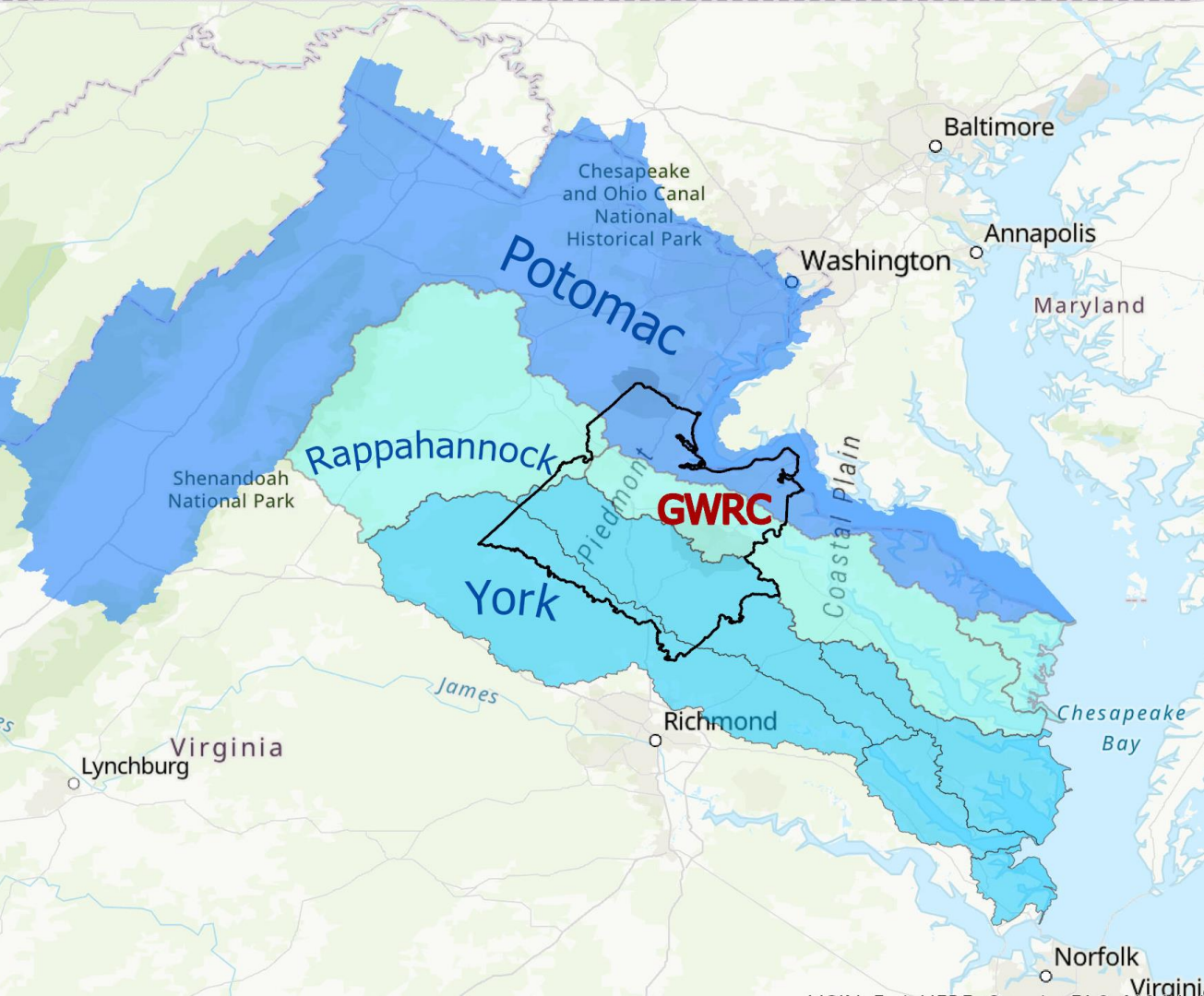
Environmental Planning
at George Washington Regional
Commission



GEORGE WASHINGTON

REGIONAL COMMISSION





**GWRC
contains 3
major river
basins**



Strategic Vision

Water
Quality



"We aspire to see a region **using land wisely and growing thoughtfully**, better appreciating the natural beauty of its piedmont and coastal realm, working to **protect its natural resources** (land, air, and water), taking actions to **minimize the impacts of natural disasters**, and preserving its cultural heritage and historic resources."

Resiliency



Hazards



ES Focal Areas:



**WATER
QUALITY**

HAZARDS



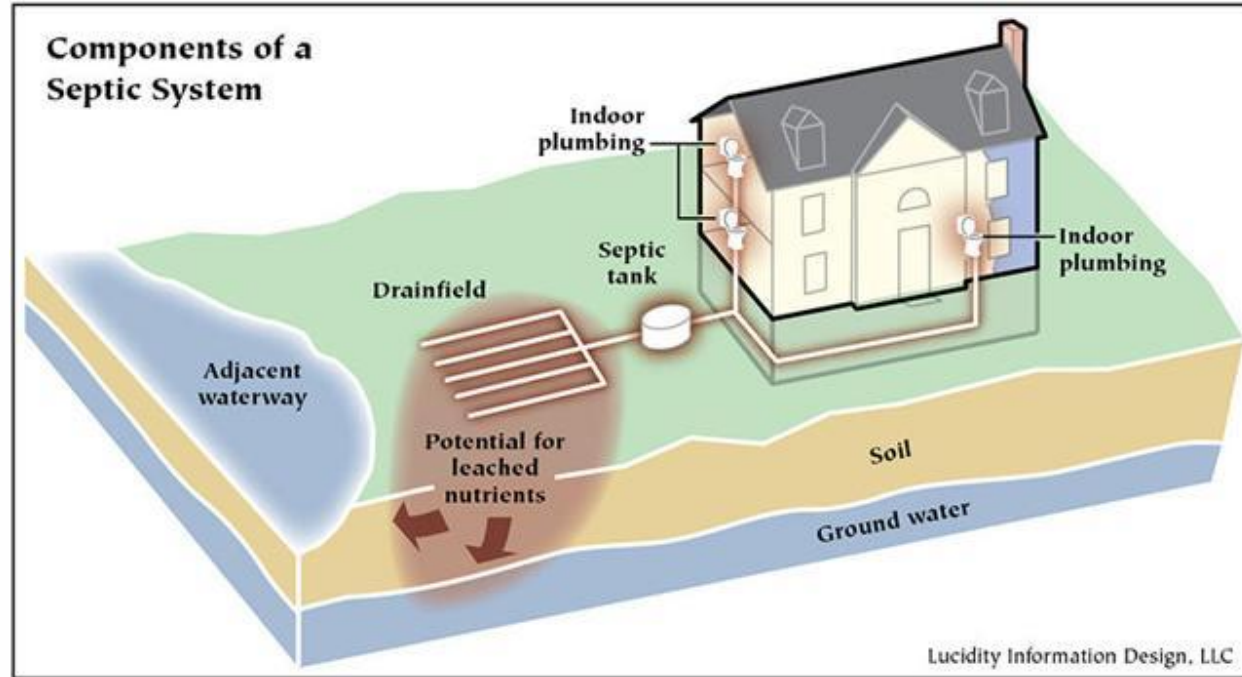
RESILIENCE

SEPTIC RELIEF PROGRAM



Back-end: several grants to support water quality

Front-end: easy process for residents to get assistance repairing / replacing septic or connecting to sewer



Urban Heat Island

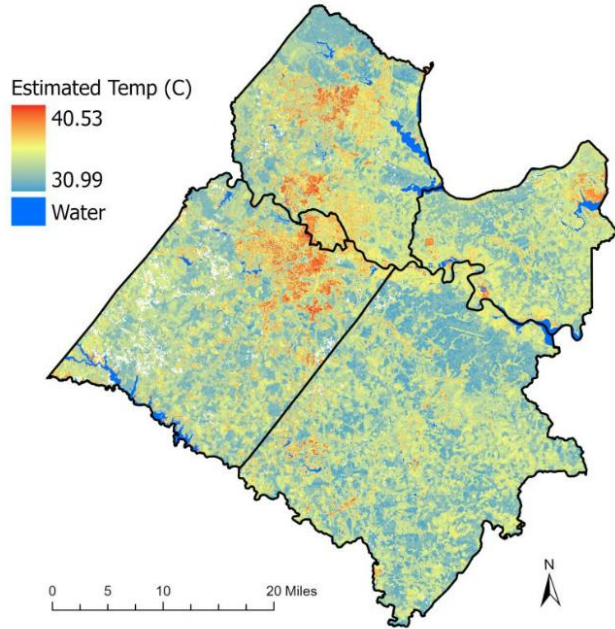
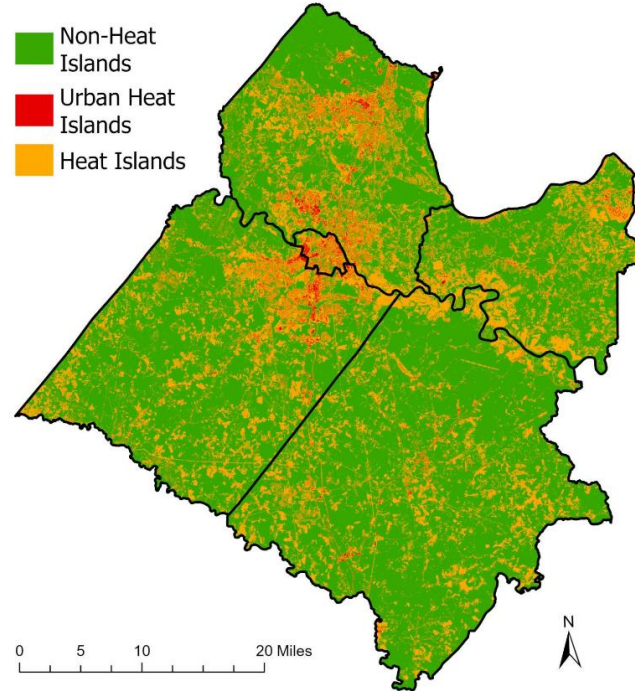


Figure 2: This map of Planning District 16 shows the predicted air temperature that was the output from the Forest-based Classification and Regression ArcGIS Pro tool mentioned above.



Why Should I Care?

Urban Heat Island impacts communities through:

- Higher energy bills
- Worsened air quality
- Community health
- Impaired waterways

WHAT CAN WE DO?



1. **INCREASE vegetative cover** (plant trees, green, preserve parks, etc.)
2. **DECREASE impervious surfaces** that trap heat (parking lots, etc.)

PLANTING MORE TREES IS THE SIMPLEST SOLUTION TO URBAN HEAT ISLAND.

JOIN US

Green Infrastructure Charette

Implementing Solutions

- Working with DEQ on Ches. Bay Implementation \$ for Green Infrastructure
- Supporting VCAP regionally

Our Goals

- Share information about green infrastructure
- Get feedback on proposed green infrastructure projects
- Network with others who are interested in green infrastructure

REGISTER NOW!



DETAILS



FRIDAY
April 26, 2024



TIME
12:15 pm



HOWELL BRANCH LIBRARY
806 Lyons Blvd,
Fredericksburg, VA 22406

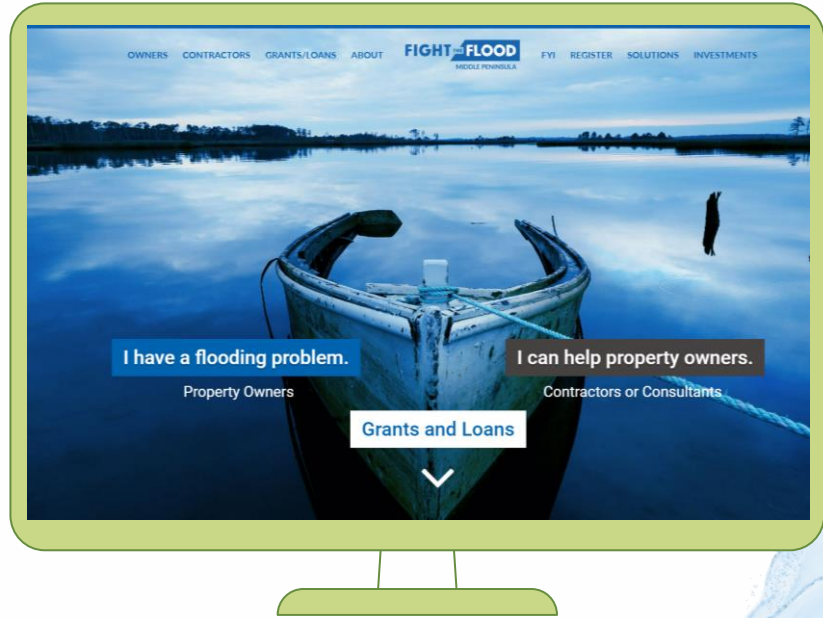


Tree Portal

(pending award)

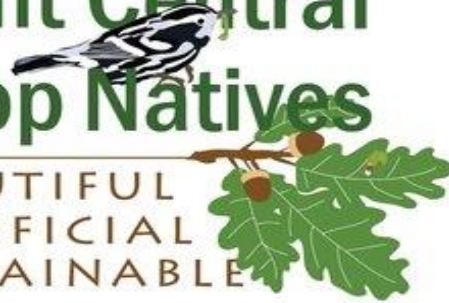
Copying our Middle Peninsula PDC's "Fight the Flood" portal *but with trees*

Big idea: get more trees planted in priority areas by matching funding sources with those in need



Plant Central Rapp Natives

BEAUTIFUL
BENEFICIAL
SUSTAINABLE



- Native Plant Demonstration Garden at Cedell Brooks Jr. Park
- Collaborative of campaign partners working to promote native plants



Hazards

- Hazard Mitigation Planning
- Staffing regional Local Emergency Planning Committee (LEPC)



Dam Failure



Flooding



Drought & Extreme Heat



Hurricanes & Thunderstorms



Wildfires



Tornadoes



Earthquakes



Winter Storms & Nor'easters



Sinkholes & Landslides

Coordination & Trainings



MS4 Planning Group

The MS4 Planning Group is open to MS4 permittees to meet and discuss how to meet their permit requirements and collaborate to reduce redundancies.



Regional Environmental Managers Technical Committee (REMTC)

The REMTC is for locality planning and environmental code staff to share resources and provide input on GWRC's Environmental Services Program.



Planning Lunches

This group is open to locality planning staff to meet and discuss issues of regional importance. Meetings alternate between trainings and networking lunches.



Regional Resiliency Group

The Regional Resiliency Group meets once a quarter and is open to the public. The typical meeting includes a quick training from a state or regional expert and then a partner roundtable.

The background features watercolor-style illustrations of green leaves and branches on the left and right sides, and blue wavy patterns in the top-left and bottom-right corners. The word "thanks!" is written in a large, green, sans-serif font with a subtle drop shadow.

thanks!

Do you have any questions?

Chip Boyles

Executive Director

Chip.boyles@gwregion.org

Meredith Keppel

Environmental Planner II

Meredith.Keppel@gwregion.org