

CERTIFICATE OF ACKNOWLEDGMENT

STATE OF KENTUCKY)
COUNTY OF OLDHAM)
I, NOTARY PUBLIC IN AND FOR THE STATE AND COUNTY AFORESAID DO HEREBY CERTIFY THAT THE FOREGOING PLAT OF KENTUCKY ACRES SECTION 4-1 WAS THIS DAY PRESENTED TO ME BY ...

CERTIFICATE OF OWNERSHIP AND DEDICATION

THIS IS TO CERTIFY THAT THE UNDERSIGNED IS THE OWNER OF THE LAND SHOWN ON THIS PLAT AND HEREBY ACKNOWLEDGES THE SAME TO BE THE PLAT OF KENTUCKY ACRES SECTION 4-1 AND DOES HEREBY DEDICATE TO PUBLIC USE THE STREETS AND ANY OTHER SPACES SO INDICATED SHOWN THEREON.

CERTIFICATE OF RESERVATION OF GAS EASEMENT

The spaces outlined by dashed lines and marked "Gas Easement" are hereby reserved as easements for underground gas lines and appurtenances thereof, including the right to construct, operate, maintain, repair, and remove such underground gas lines and appurtenances, and the right of ingress and egress over all lots to and from the easements...

CERTIFICATE OF RESERVATION OF DRAINAGE EASEMENTS

AN EASEMENT FOR DRAINAGE PURPOSES IS HEREBY RESERVED ON AND OVER THE STRIPS OF LAND AND SPACES AS DEFINED AND BOUNDED BY DASHED LINES MARKED "PERMANENT DRAINAGE EASEMENT" FOR THE CONSTRUCTION, OPERATION AND MAINTENANCE OF DRAINS OVER SAID LAND...

CERTIFICATE OF RESERVATION OF WATER LINE EASEMENT

Permanent easement(s) for water lines and appurtenances are hereby reserved on, over, under and through the strips of land as defined and bounded by dashed lines, marked "Water Easement" together with the right of ingress and egress over all lots to and from the easement(s) for constructing, repairing, removing, replacing, relocating, reconstructing, and maintaining and enlarging of water mains...

CERTIFICATE OF RESERVATION OF ELECTRIC TELEPHONE LICENSE EASEMENTS

The spaces outlined by dashed lines and marked "Electric and Telephone Easement" are hereby reserved for electric and telephone utility purposes, which include: (1) the right of ingress and egress over all lots, access areas, and poles to and from the easements; (2) the right to cut down or trim any trees within the easement; (3) the right to trim or cut down any trees outside easement area within 10' of the closest conductor within the easement or public utility lines...

CERTIFICATE OF RESERVATION OF SANITARY SEWER AND DRAINAGE EASEMENT

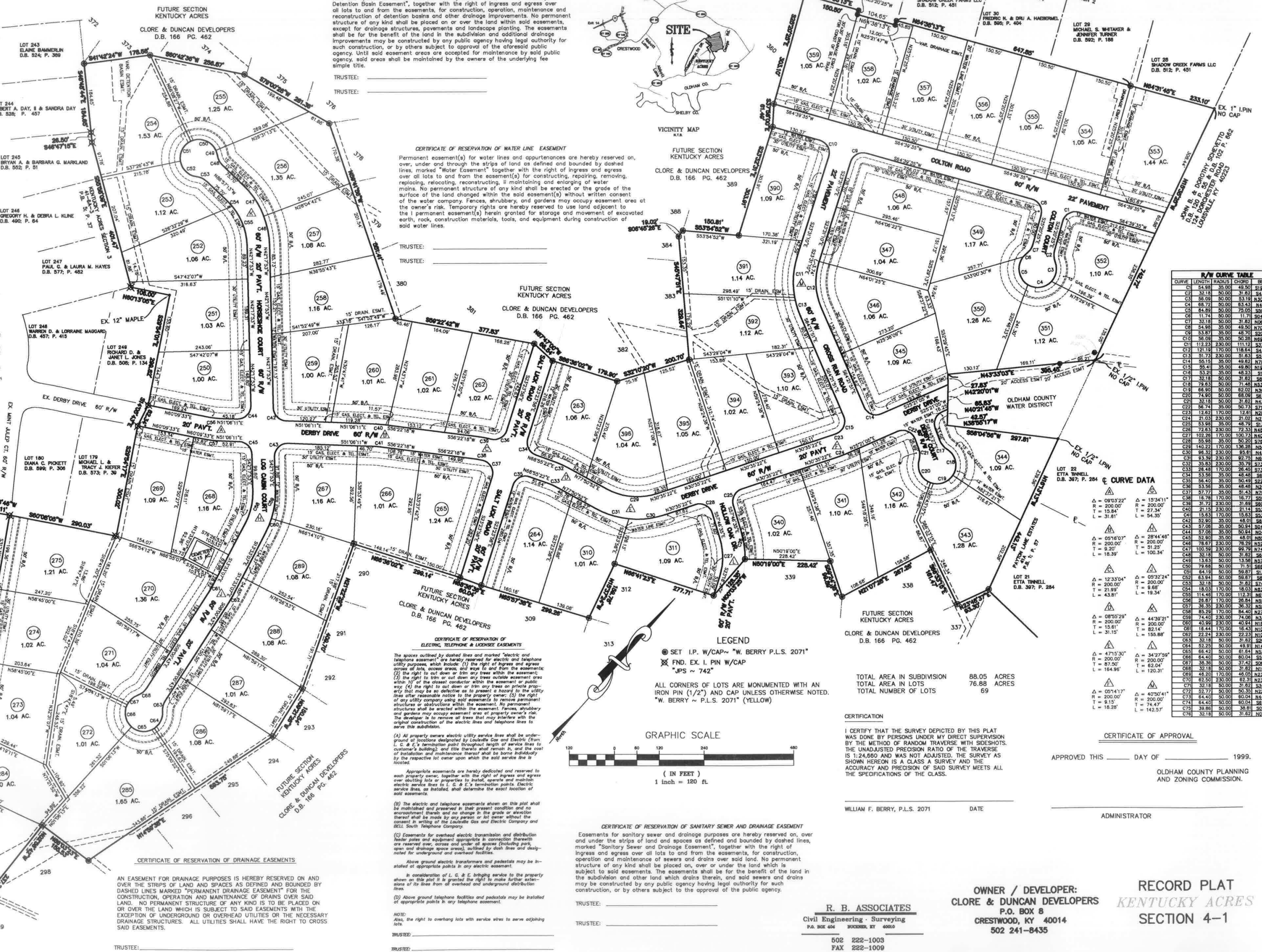
Easements for sanitary sewer and drainage purposes are hereby reserved on, over and under the strips of land and spaces as defined and bounded by dashed lines, marked "Sanitary Sewer and Drainage Easement", together with the right of ingress and egress over all lots to and from the easements...

CERTIFICATE OF RESERVATION OF DRAINAGE DETENTION BASIN EASEMENT

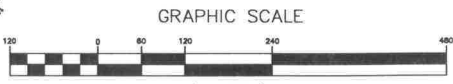
Easements for drainage and ponding purposes are hereby reserved on and over the land and spaces as defined and bounded by dashed lines, marked "Drainage Detention Basin Easement", together with the right of ingress and egress over all lots to and from the easements, for construction, operation, maintenance and reconstruction of detention basins and other drainage improvements...



VICINITY MAP



R/W CURVE TABLE and CURVE DATA tables listing curve information and curve data for various lots and easements.



CERTIFICATION: I CERTIFY THAT THE SURVEY DEPICTED BY THIS PLAT WAS DONE BY PERSONS UNDER MY DIRECT SUPERVISION BY THE METHOD OF RANDOM TRAVERSE WITH SIDESHOTS. THE UNADJUSTED PRECISION RATIO OF THE TRAVERSE IS 1:24,000 AND WAS NOT ADJUSTED. THE SURVEY AS SHOWN HEREON IS A CLASS A SURVEY AND THE ACCURACY AND PRECISION OF SAID SURVEY MEETS ALL THE SPECIFICATIONS OF THE CLASS.

WILLIAM F. BERRY, P.L.S. 2071 DATE: APPROVED THIS DAY OF 1999. ADMINISTRATOR: OLDHAM COUNTY PLANNING AND ZONING COMMISSION.

R. B. ASSOCIATES Civil Engineering - Surveying P.O. BOX 404 BUCKLEY, KY 40001 502 222-1003 FAX 222-1009

OWNER / DEVELOPER: CLORE & DUNCAN DEVELOPERS P.O. BOX 8 CRESTWOOD, KY 40014 502 241-8435

RECORD PLAT KENTUCKY ACRES SECTION 4-1