

**BOTTOM PINS**

- Sold in packages of 100
- A - for most Classic & Preferred cylinders
- J - for Classic 3400-XX-1095/1099 universal cylinders & 8400-XX-1095/1099 Preferred cylinders

BOTTOM PINS											
MFG #	A2(A)	A2(J)	EZ #	MFG #	A2(A)	A2(J)	EZ #	MFG #	A2(A)	A2(J)	EZ #
3800 00 3200	0A	—	007587	3800 00 3205	5A	0J	007592	6140 00 3205	—	5J	069029
3800 00 3201	1A	—	007588	3800 00 3206	6A	1J	007593	6140 00 3206	—	6J	069030
3800 00 3202	2A	—	007589	3800 00 3207	7A	2J	007594	6140 00 3207	—	7J	069031
3800 00 3203	3A	—	007590	3800 00 3208	8A	3J	007595	6140 00 3208	—	8J	069032
3800 00 3204	4A	—	007591	3800 00 3209	9A	4J	007596	6140 00 3209	—	9J	069033

**PATENT PINS**



**3800 00 3004**



**3800 00 3005**



**3800 00 4010**

MFG #	DESCRIPTION	PACKAGE	EZ #
3425 00 3002	Patent Top Pin For Non I/C Core	100	035916
3800 00 3005	Patent Top Pin For I/C Core & RC	100	035938
3800 00 4010	Stainless Steel Spring	500	035939
FOR CLASSIC			
3800 00 3004	Patent Bottom Pin	100	035937
6140 00 3004	Patent Bottom Pin For Universal Cylinders	100	065307
FOR PREFERRED			
8140 00 3004	Patent Bottom Pin For Universal Cylinders & Select Removable Cores	100	101051
8800 00 3004	Patent Bottom Pin	100	100034

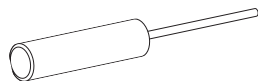
**TOOLS**



**380 00 3001**

**3800 00 4050**

- Multi-Key-Gage checks .140" and .150" spacing and depth for the A2 and A4 system



**3800 00 3548**

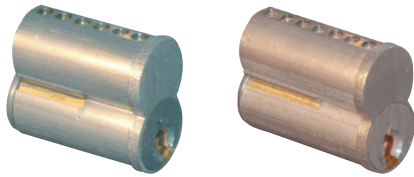


**3800 00 4050**

MFG #	DESCRIPTION	EZ #
3800 00 3001	Modified B Vise Jaw For HPC 1200CM	061281
3800 00 3548	Ejector Tool For 8800/ 3800 Series Capped I/C	063657
3800 00 4050	Multi-Key Gauge Check	029764

K

### SMALL FORMAT INTERCHANGEABLE (I/C) CORES



206

207

- For Best, Arrow, Falcon and other manufacturer products that use small format I/C cores
- Apart from stocked keyways, other keyways available are B, C, E, F, G, H, K, L, M, Q, 1C & 1D

MFG #	KEYWAY	KEYING	PINS	EZ #
206A26D	A	Uncombined	6	007673
206A26D KA2	A	KA/2	6	035855
206C A26D KD	A	KD	6	051374
206D26D	D	Uncombined	6	007679
206J26D	J	Uncombined	6	007689
207A26D	A	Uncombined	7	007693
207J26D	J	Uncombined	7	007709
<b>CONTROL KEY FOR A KEYED CORES</b>				
CON KEY856947				076524

K

### RIM & MORTISE CYLINDER SHELLS



308

316

406  
407

#### 316

- Tapered cylinder head (316)
- Set screw from inside cylinder can be used to secure cylinder to lock case

MFG #	PINS	CAM	LENGTH	EZ #
<b>RIM CYLINDER</b>				
308 26D	6	—		007720
<b>MORTISE CYLINDER WITH CAM</b>				
316 601 26D	6	Adams Rite	1-3/8"	007726
<b>MORTISE CYLINDERS LESS CAMS - USE 700 SERIES CAMS</b>				
406 26D	6	Optional	1-1/4"	073500
407 26D	7	Optional	1-3/8"	073501

### TOOLS & CAPS



606

610

CAPS

MFG #	DESCRIPTION	EZ #
606	Capping Block & Punch	035856
610	Ejector Punch	035857
CAPS	Cylinder Caps (Package/500)	035854

### CAMS FOR 400 SERIES MORTISE CYLINDERS



700

701

702

702L

702S

MFG #	CAMS	EZ #
700	Standard	073503
701	Adams Rite	073504
702	Cloverleaf	073505
702L	Schlage	073506
702S	Sargent	073558