

8500 KW CONDENSING STEAM TURBINE GENERATOR SET

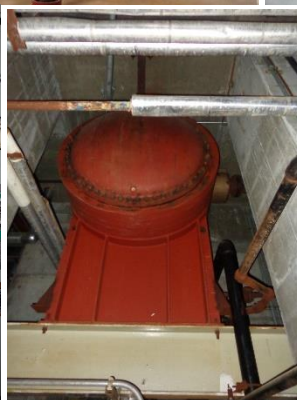
Manufacturer: Westinghouse
Rating: 8500 kw
Inlet steam: 650 psig/750° f
Maximum inlet flow: 100,000 lbs/hr
Frame number: EM-25
Speed: 6,750 rpm
Uncontrolled Extraction: 150 psig, 13,000 lbs/hr
70 psig, 10,440 lbs/hr
Exhaust steam: 3" hga, 76,327 lbs/hr
Gear Reducer: 6,750 rpm to 1800 rpm

Generator:
Manufacturer: GEC
Rating: 10,000 kva
Voltage: 13,800 v, 3 phase, 60 hz
PF: 0.85
Type: Air cooled

Scope of supply:

Complete unit with steam turbine, gear reducer, generator with lube oil mounted on common skid, condenser, condensate extraction pumps with motor, air ejector, Woodward 505E governor, generator breaker and control panel with solid state relays.

History: year built 1987 part of Lm2500 combined cycle power plant, still installed.



NSV ENERGY LLC
www.nsvenergy.com
sales@nsvenergy.com 1-908-421-4139

