



BUSINESS OPPORTUNITY

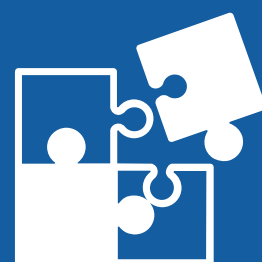
Presentation to:
DEVELOPMENT PARTNERS / STRATEGIC INVESTORS
Presented by: Greg Malpass/ Maricarmen Chinchilla
DESTINY-GRAM.COM

April 2025





A PRIVACY-FIRST AI PERSONALIZATION PLATFORM



BUSINESS PROPOSAL

Development Partners and Strategic Investors are sought for the Startup of a new AI-Powered Personal Profiling & Mentoring Platform



MVP PROJECT

AI-driven EdTech Startup-Multi-Stage Investment & Partnership Opportunity with Global \$1 billion Revenue Potential



A woman with long dark hair in a ponytail, wearing a blue long-sleeved shirt and a headset with a microphone, is seated in an ergonomic office chair. She is looking at a large monitor on her desk. The monitor displays a video conference with three participants. To the left of the main monitor, there is a smaller tablet or laptop showing two pie charts. On the desk, there are also some papers, a small vase with red flowers, and a desk lamp. The background shows a window with sheer curtains and a shelf with various items.

Artificial Intelligence's Most Critical Challenge



POWER POINT PRESENTATION



Maricarmen Chinchilla
Marketing Manager, Destiny-Gram

"Welcome to Destiny-Gram, a privacy-first AI personalization platform poised to revolutionize how students and professionals navigate their personal and career development journeys. I'm Maricarmen Chinchilla, Marketing Manager of Destiny-Gram, and I've spent the last three years developing a solution to what I believe is Artificial Intelligence's most critical challenge: delivering personalized experiences without compromising user privacy."



THE PROBLEM



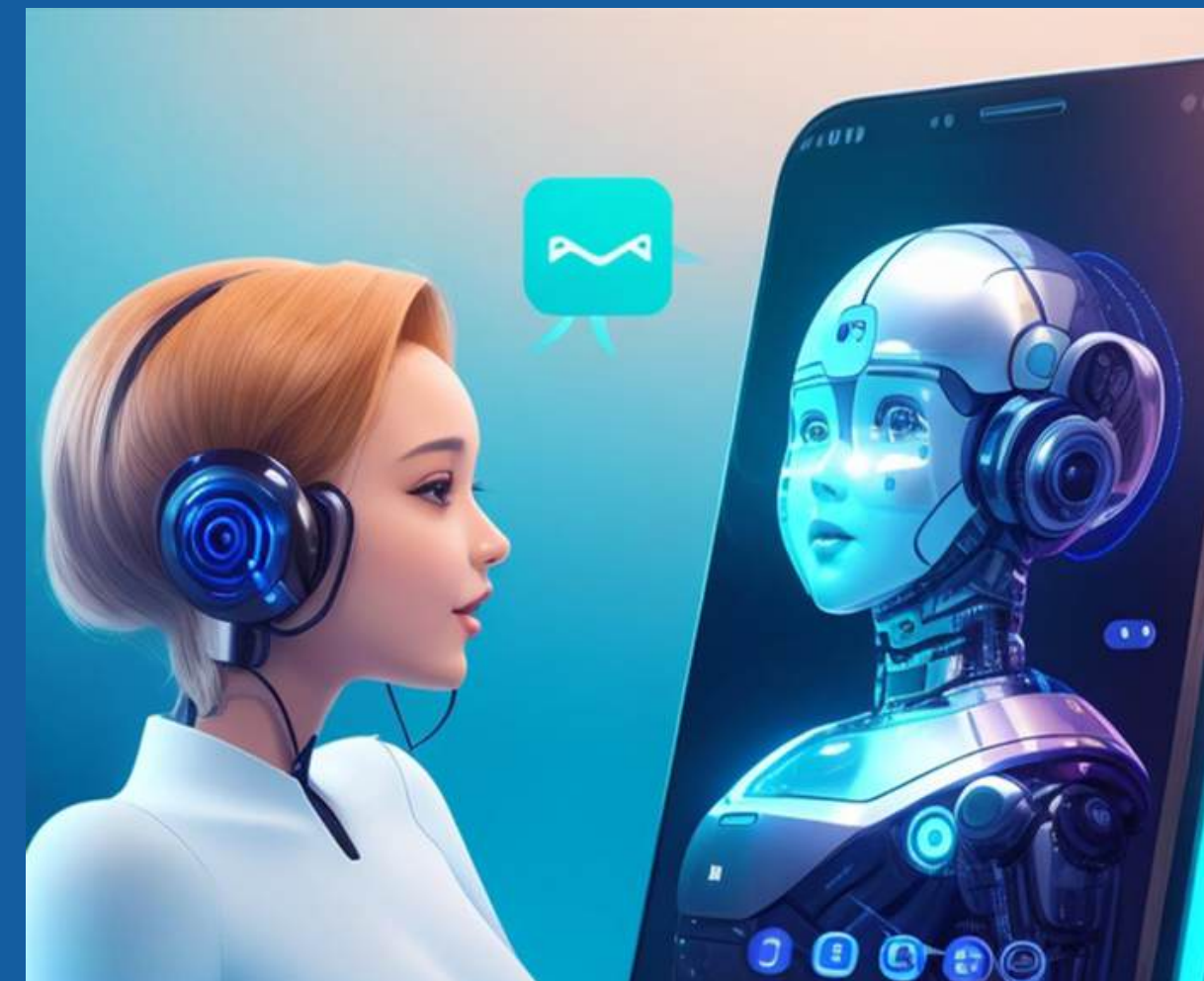
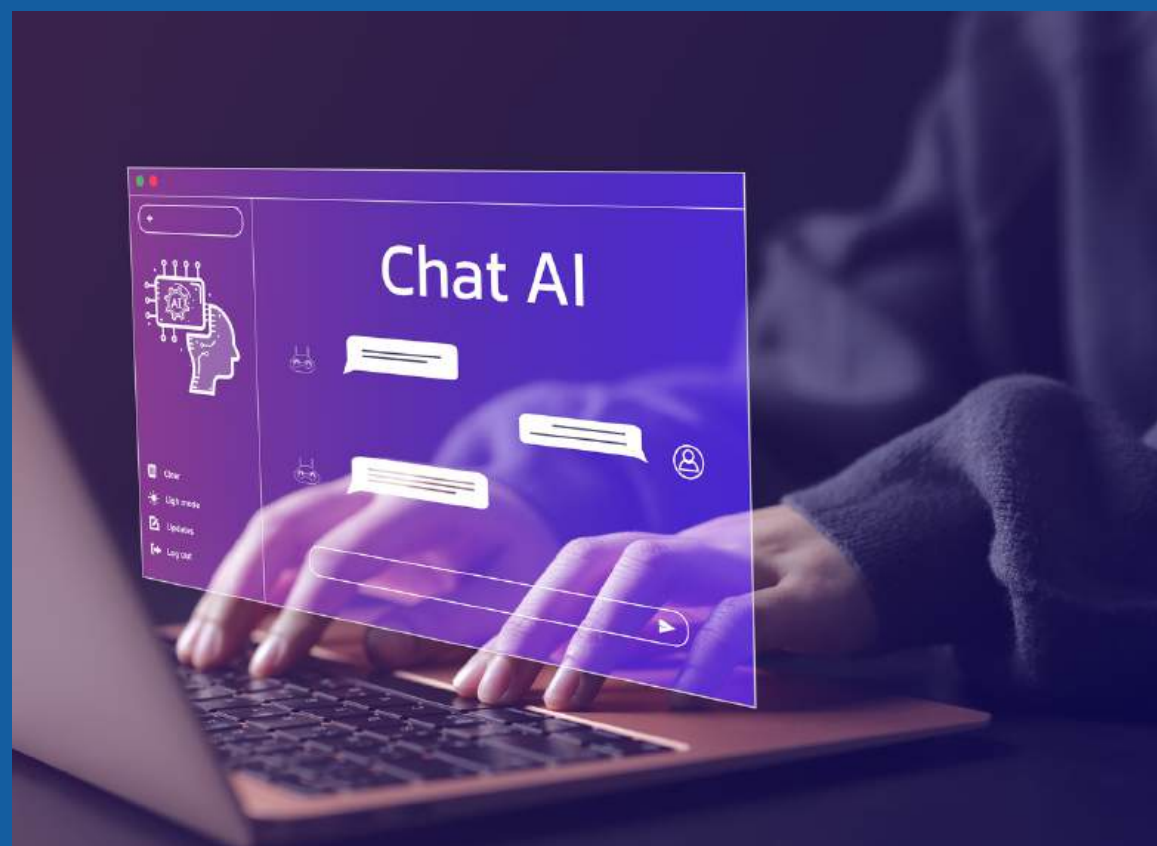
**AI-chatbots lack the secure,
critical personalization
users now seek**

"Today's leading AI chatbots like Claude, GPT, and Microsoft Copilot are remarkably powerful, but they lack critical personalization. They don't truly know the individual user, resulting in generic advice and limited effectiveness for personal development. Meanwhile, privacy concerns are mounting as competitors pursue data-hungry approaches that compromise user control over personal information. As AI becomes increasingly embedded in education and professional development, there's an urgent need for secure, personalized guidance that respects user privacy."



THE PROBLEM

78% of users seek more personalized AI-interaction
BUT 82% express concern over data collection



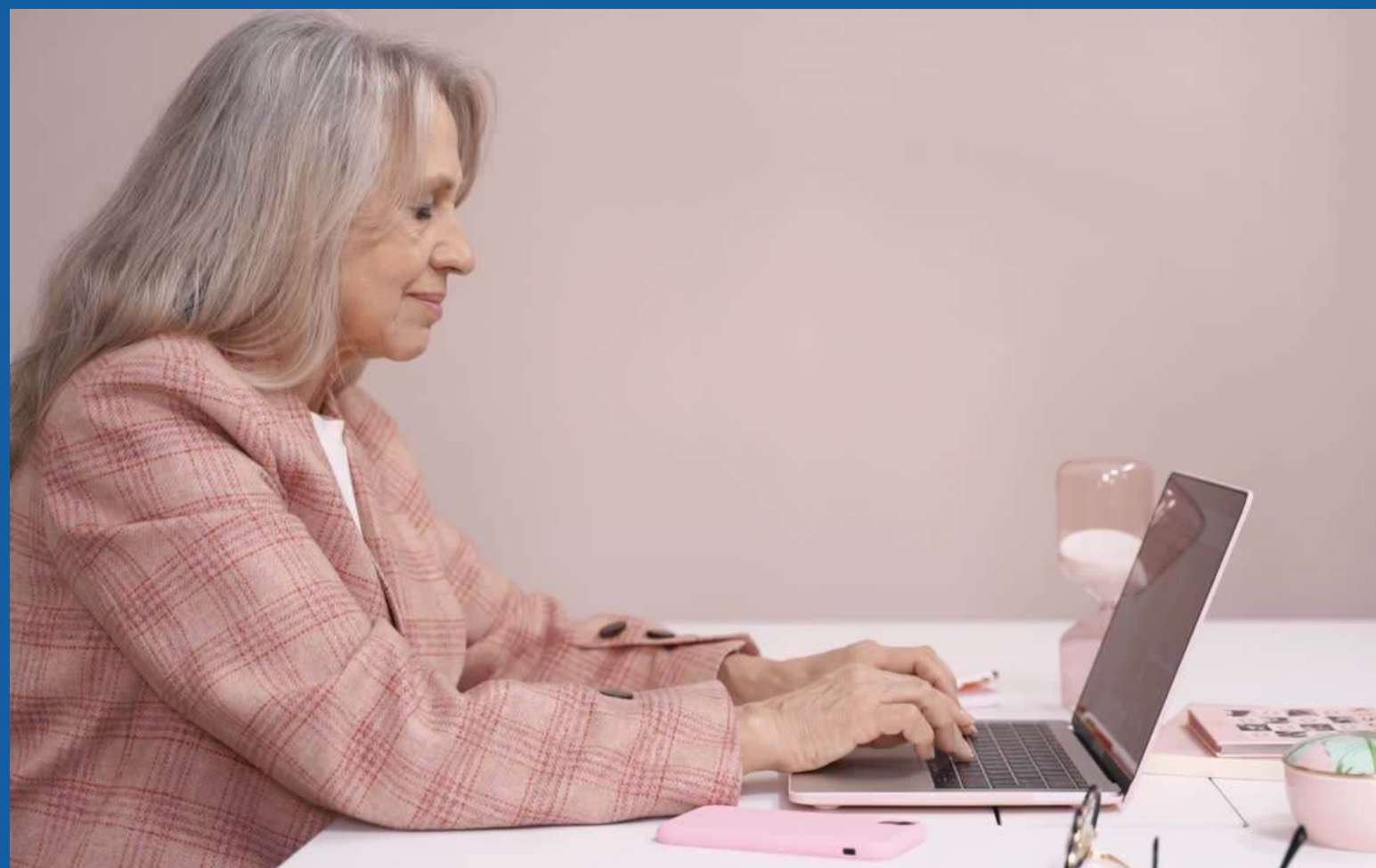
AI-chatbots lack secure, critical personalization

"Today's leading AI chatbots like Claude, GPT, and Microsoft Copilot are remarkably powerful, but they lack critical personalization. They don't truly know the individual user, resulting in generic advice and limited effectiveness for personal development. Meanwhile, privacy concerns are mounting as competitors pursue data-hungry approaches that compromise user control over personal information. As AI becomes increasingly embedded in education and professional development, there's an urgent need for secure, personalized guidance that respects user privacy."



OUR SOLUTION

User control over Profile Generation & Sharing



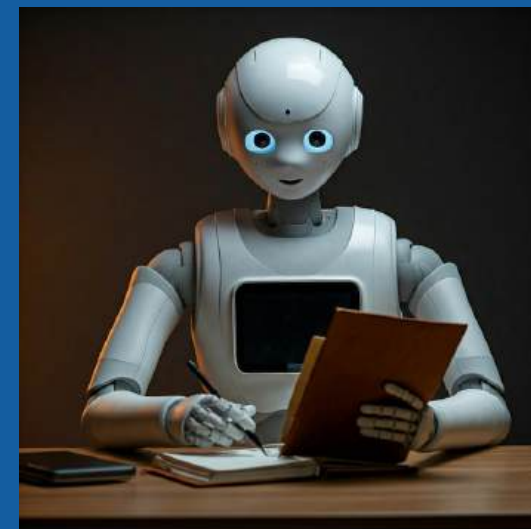
To create secure personal profiles using AI and API's to enable user controlled hyper-personalized AI Mentoring

"Destiny-Gram solves this fundamental limitation by creating detailed personal profiles through proprietary assessment methods and securely enabling these profiles to inform AI interactions — making the guidance truly personalized to each individual user. Our platform combines three powerful elements: detailed personal profiling through scientifically validated assessments, AI analysis using our proprietary algorithms, and seamless integration of this personalized data with leading AI chatbots. The result is transformative: hyper-personalized AI mentoring without the privacy concerns."



OUR SOLUTION

Controlled use of your Data

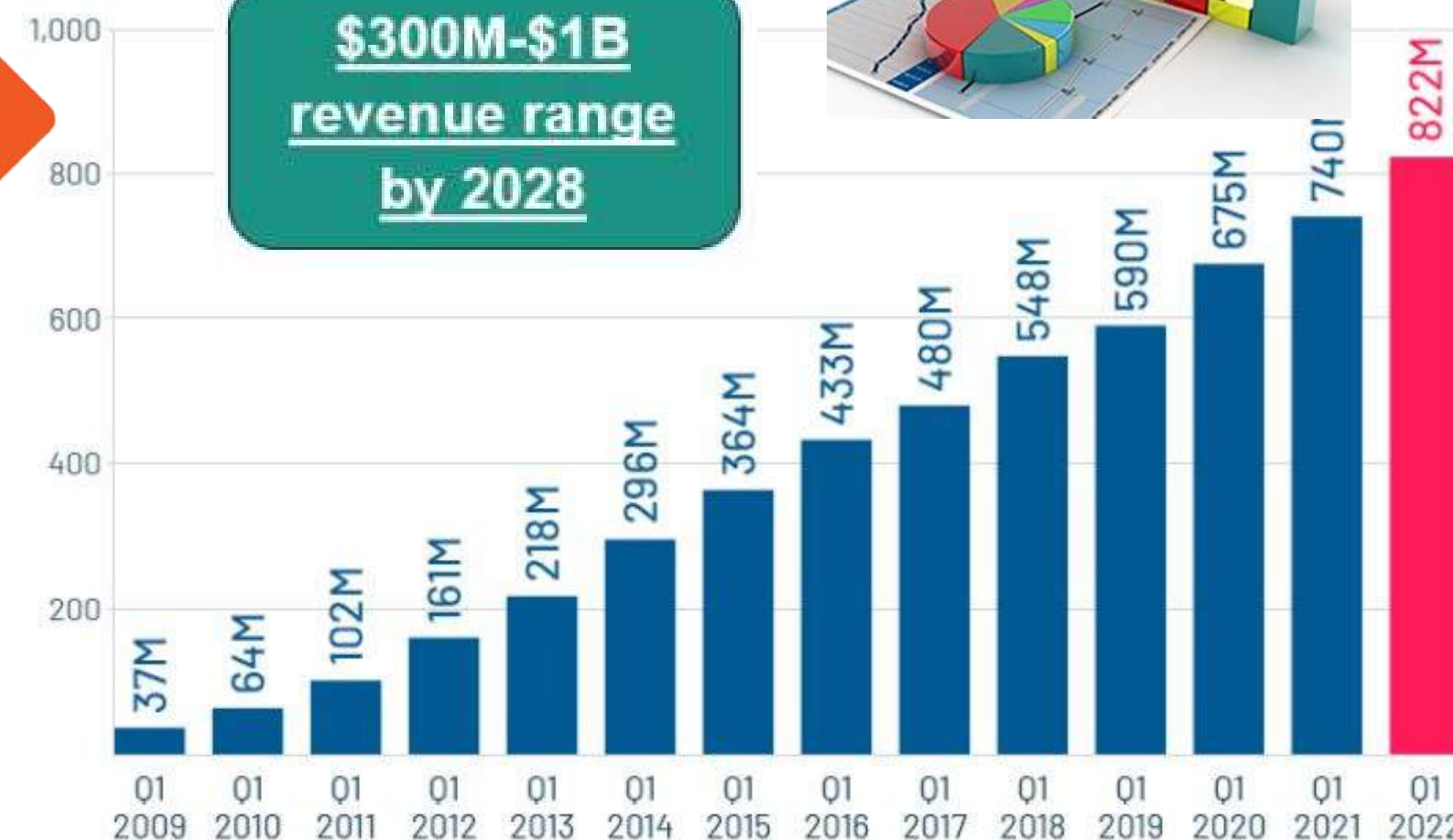


To create secure personal profiles and enable user controlled hyper-personalized AI Mentoring

"Destiny-Gram solves this fundamental limitation by creating detailed personal profiles through proprietary assessment methods and securely enabling these profiles to inform AI interactions — making the guidance truly personalized to each individual user. Our platform combines three powerful elements: detailed personal profiling through scientifically validated assessments, AI analysis using our proprietary algorithms, and seamless integration of this personalized data with leading AI chatbots. The result is transformative: hyper-personalized AI mentoring without the privacy concerns."



HUGE MARKET POTENTIAL

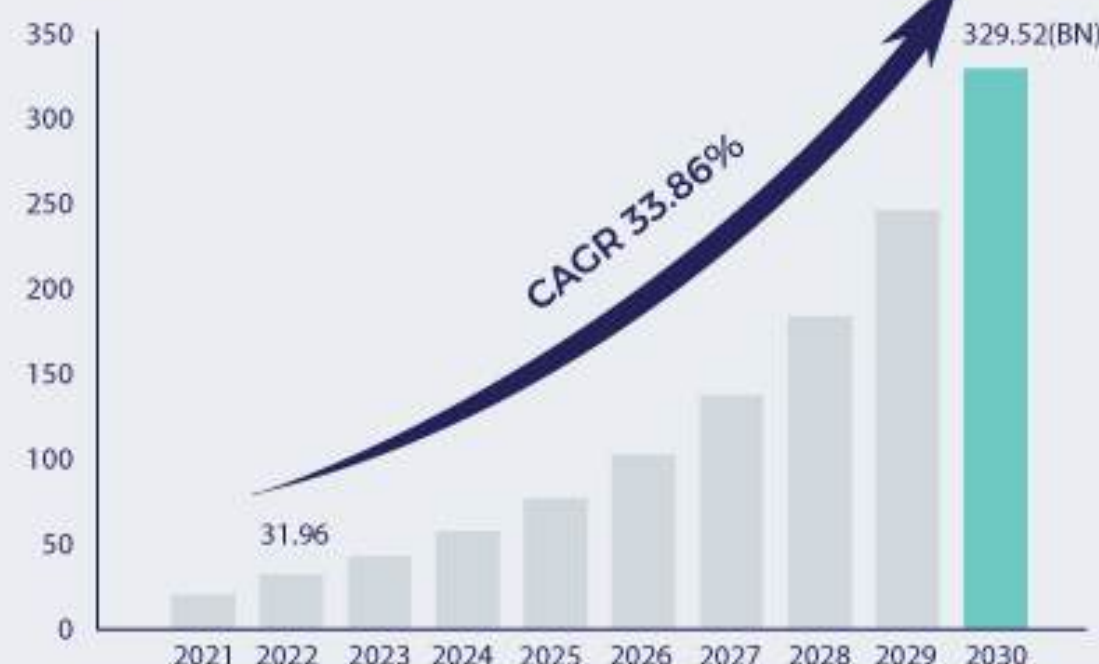


Source: Business of Apps



If growth mirrored that of LinkedIn, Destiny-Gram users could exceed 100 million within 3-years

Global Chatbot Market Size by 2023 to 2030 (USD Billion)



MARKET SIZE
CAGR
33.86%

SNS INSIDER
Strategy & Stats
source: www.snsinsider.com

"We stand at a pivotal moment in AI development history. The global AI market is projected to reach \$190 billion by 2025, while the personalized education market will exceed \$350 billion. The Global EdTech market specifically is projected to reach \$404 billion by 2026, with AI in education estimated at \$20 billion by 2027. The personal development market exceeds \$50 billion annually. Destiny-Gram sits precisely at this powerful intersection, with a potential \$300 million to \$1 billion market within 3 years."

GOALS AND OBJECTIVES

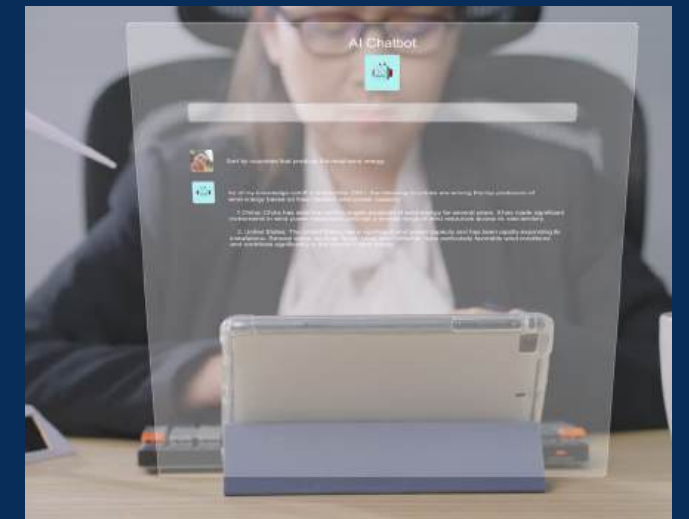
Leverage cutting-edge AI technologies to:

Create comprehensive personal profiles

Securely integrate with leading AI chatbots

Deliver hyper-personalized guidance

Maintain highest standards of data privacy & security



"What makes DestinyGram unique? Our system leverages cutting-edge AI technology to: Create comprehensive personal profiles through proprietary assessment tools; Securely integrate this data with leading AI chatbots (Claude, GPT, Co-Pilot); Deliver hyper-personalized guidance tailored to individual characteristics, goals, and preferences; Maintain the highest standards of data privacy and security through our granular consent model, blockchain-based data management, zero-knowledge proofs, and encrypted personal data vaults."

DELIVERING A SECURE HYPER- PERSONALIZED AI-CHATBOT INTERFACE



Create comprehensive personal profiles

Securely integrate with leading AI chatbots

Deliver hyper-personalized guidance

Maintain highest standards of data privacy & security



"What makes DestinyGram unique? Our system leverages cutting-edge AI technology to: Create comprehensive personal profiles through proprietary assessment tools; Securely integrate this data with leading AI chatbots (Claude, GPT, Co-Pilot); Deliver hyper-personalized guidance tailored to individual characteristics, goals, and preferences; Maintain the highest standards of data privacy and security through our granular consent model, blockchain-based data management, zero-knowledge proofs, and encrypted personal data vaults."



GO-TO-MARKET STRATEGY

Phase 1 (Months 1–6) Foundation & University Partnership

- Establish strategic university partnership
- Form interdisciplinary working group
- Develop MVP with core functionality

- Deploy with select student groups at partner universities
- Comprehensive data collection and research
- Refine based on feedback

Phase 2 (Months 7–12) Pilot & Validation



Phase 3 (Months 13–24) Market Expansion

- Scale platform across multiple universities
- Launch commercial applications
- Expand team and infrastructure

"Our implementation strategy follows a carefully planned, phased approach"



GO-TO-MARKET STRATEGY



- Deploy with select student groups at partner universities
- Comprehensive data collection and research
- Refine based on feedback

Phase 2 (Months 7–12) Pilot & Validation

Phase 3 (Months 13–24) Market Expansion

- Scale platform across multiple universities
- Launch commercial applications
- Expand team and infrastructure



TRACTION METRICS



Conceptual Framework

Fully developed through extensive literary foundations

Technical Design

Proprietary algorithms and assessment methodology established



Prototype Development

Initial programming completed with 900+ pages of code documentation



University Partnerships

In early discussion with leading international universities and focus on leading AI players like MIT, Stanford, Berkeley, UPC, Oxford, and Cambridge



Key Target

10,000 initial volunteer subscribers from partner universities in Year 1"

"Our Development has progressed substantially"



TRACTION METRICS



University Partnerships

In early discussion with leading international universities and focus on leading AI players like MIT, Stanford, Berkeley, UPC, Oxford, and Cambridge

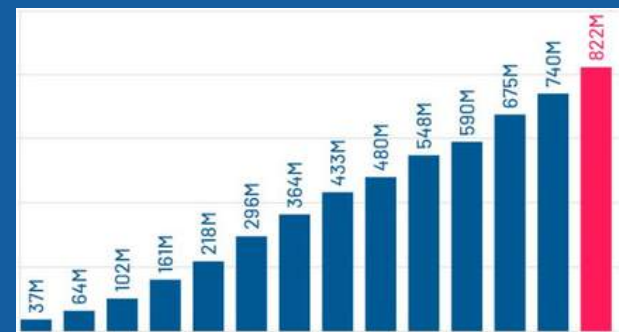
Key Target

10,000 initial volunteer subscribers from partner universities in Year 1

"Our Development has progressed substantially"



TRACTION METRICS



Post-Launch Focus

Expanding the team, marketing aggressively & attracting a global partner

“Our post-launch focus will be on expanding the team and infrastructure to market aggressively and achieve the exponential growth required to attract a global strategic partner”



OUR TEAM



Greg
Malpass

CEO



Matthew
Wright

COO



Subra
Beladakere

CTO

CMO



"Destiny-Gram is led by our co-founder Greg Malpass, bringing extensive experience in business development and entrepreneurship and personal development. He's secured a highly relevantly qualified COO Technologist and a CTO from Y-Combinator with strong background in AI systems and privacy-preserving technologies to complete our leadership team. Together we are assembling a wider team with expertise in educational technology through university partnerships, AI development, and user experience design. Together, we have the vision and technical capability to bring this transformative platform to market."



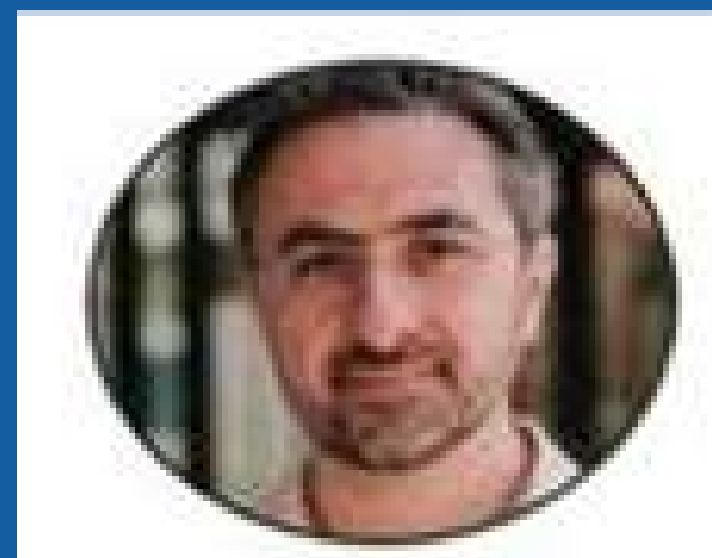
UNIQUE SELLING POINT

Security & Data Quality vs. Data Quantity



Greg Malpass
CEO Destiny-Gram

**“The sharing of user generated
& controlled profiles”**



Mustafa Suleyman,
CEO Microsoft AI

“Your digital companion is coming!”



Elon Musk
CEO x.ai

**“Accused of the
harvesting of user data”**

"Our Key Differentiation Factor is the integration of secure, detailed personal profiles with AI chatbot mentoring, creating a powerful synergy that no competitor currently matches. While Elon Musk's x-AI is integrating with social media to harvest user data, we've created a fundamentally different approach. Destiny-Gram enables users to create secure personal profiles they control completely, then selectively share with AI-chatbot systems. Our proprietary assessment methodology and data security framework provide significant barriers to entry."



COMPETITIVE LANDSCAPE

No competitor securely integrates detailed, user controlled, personal profiles with AI-chatbots for hyper-personalized AI-mentoring

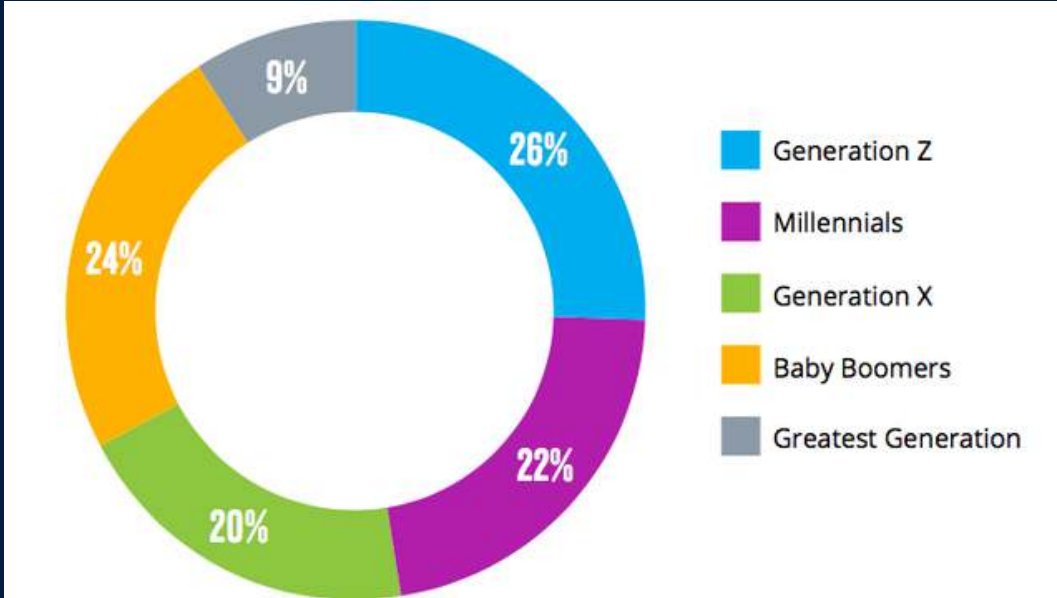


"While the broader AI and educational technology markets are competitive, DestinyGram occupies a unique position with limited direct competition: -Personality assessment tools like 16Personality provide profiles but lack AI integration; AI-powered coaching platforms like BetterUp focus on human coaches, not AI personalization; Career assessment tools like Pymetrics offer narrow applications without comprehensive development. Destiny-Gram's unique combination creates a powerful barrier to entry. Our first-mover advantage positions us to establish market leadership before larger competitors can develop comparable offerings."

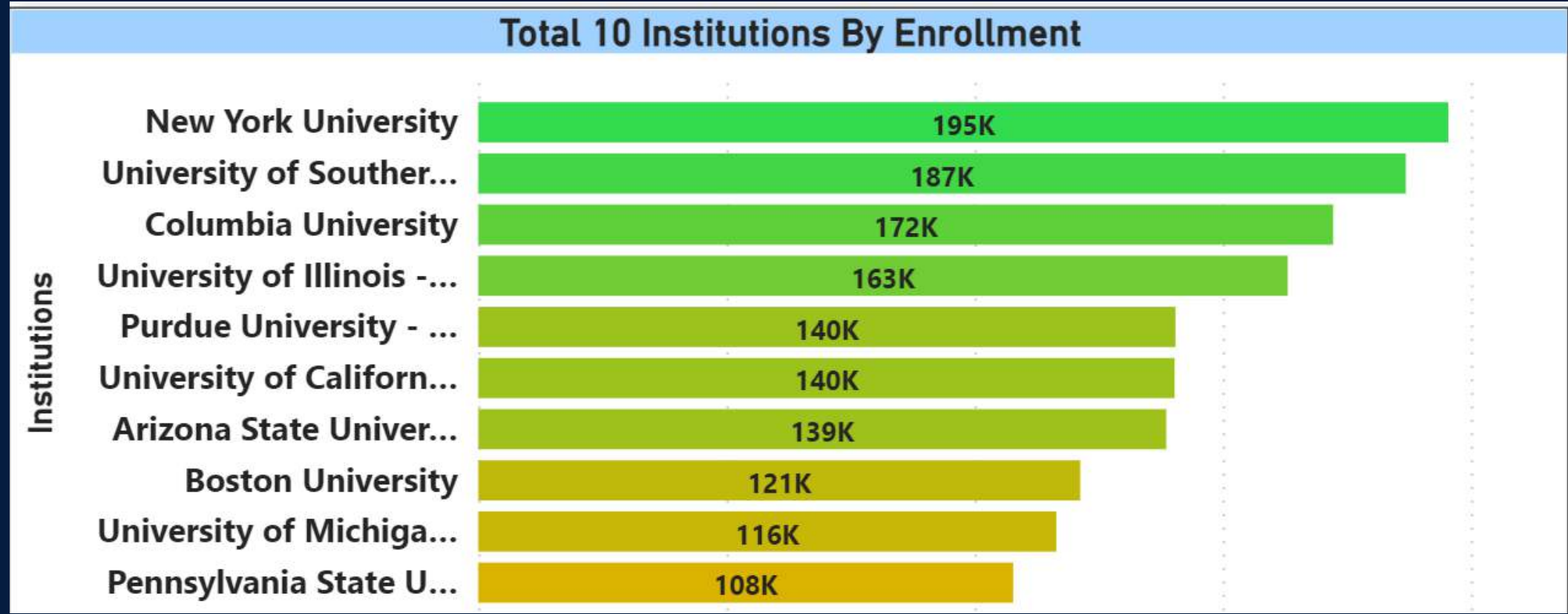


TARGET AUDIENCE

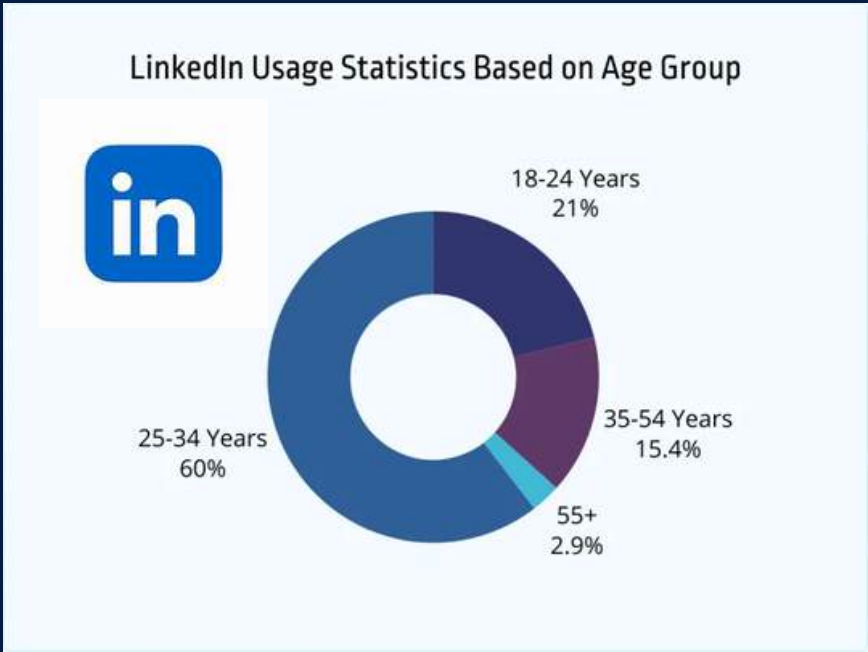
200 m university students
& young professionals in US/EU



200 m Millennials
& Gen Z in US and EU



1.5 m students in Top 10 US universities alone



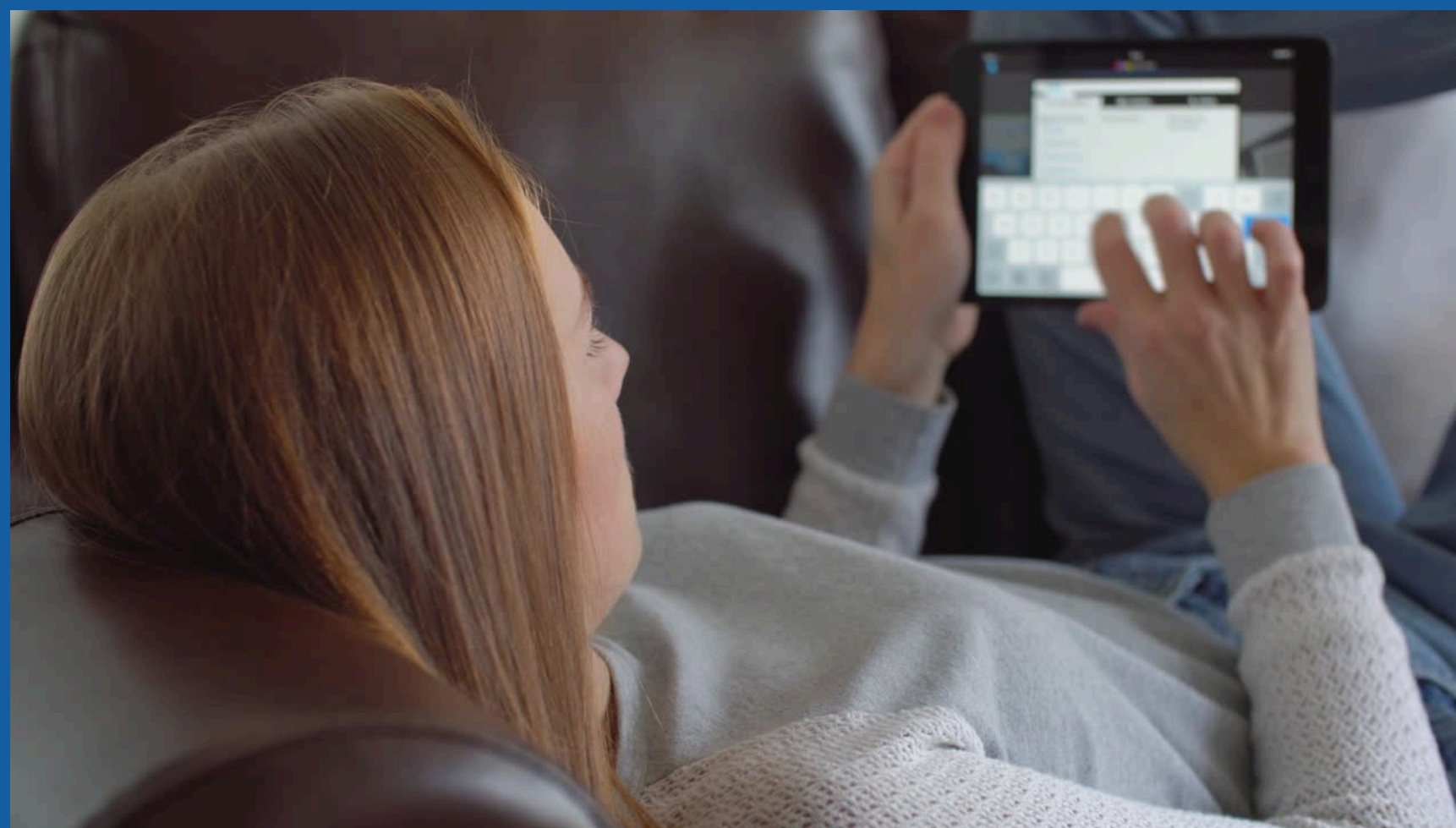
80% of LinkedIn
800m+ users
under 35 years old

"Our platform is designed for three key audience segments: Primary: University students (18-30 years); Secondary: Young professionals and career transitioners (e.g., 800+ million LinkedIn Users); Tertiary: Educational institutions and corporate training programs We're targeting a massive market of 200 million millennials and Gen Z in the US/EU who are seeking personalized guidance for their educational and career journeys, as well as informed responses to their questions in their day-to-day lives."



REVENUE MODEL

SIGN-UP SUBSCRIPTIONS & PREMIUM SERVICES

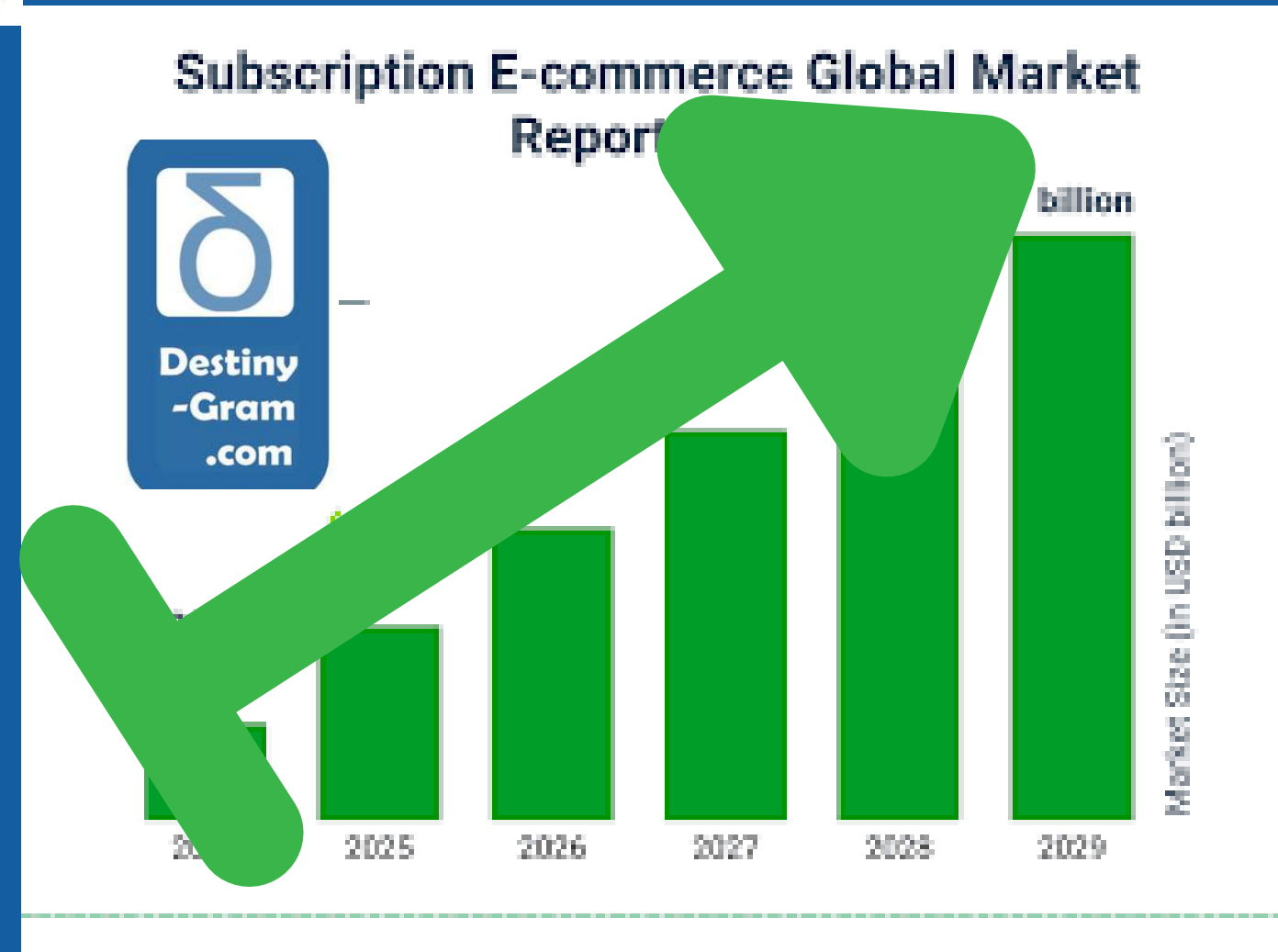


- Sign-up & profile generation subscription - one off
- Corporate/University partnerships - group subscriptions
- Premium Progress Tracking Service (PTS) - annual renewable
- Data Analytics & insights

"Destiny-Gram offers multiple revenue streams: University licensing: €12 per student subscription; Corporate partnerships: Custom based on volume; Premium Progress Tracking features for individual users: €60 per year; Data analytics and insights (anonymized and aggregated). This diversified approach ensures stable revenue growth while allowing flexibility in market penetration strategies."

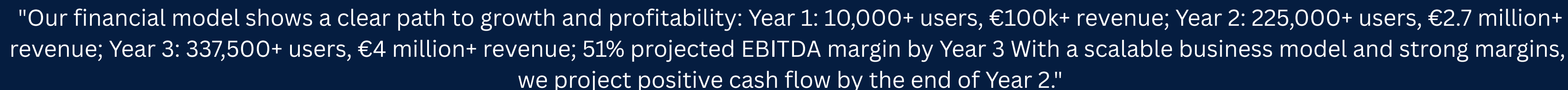
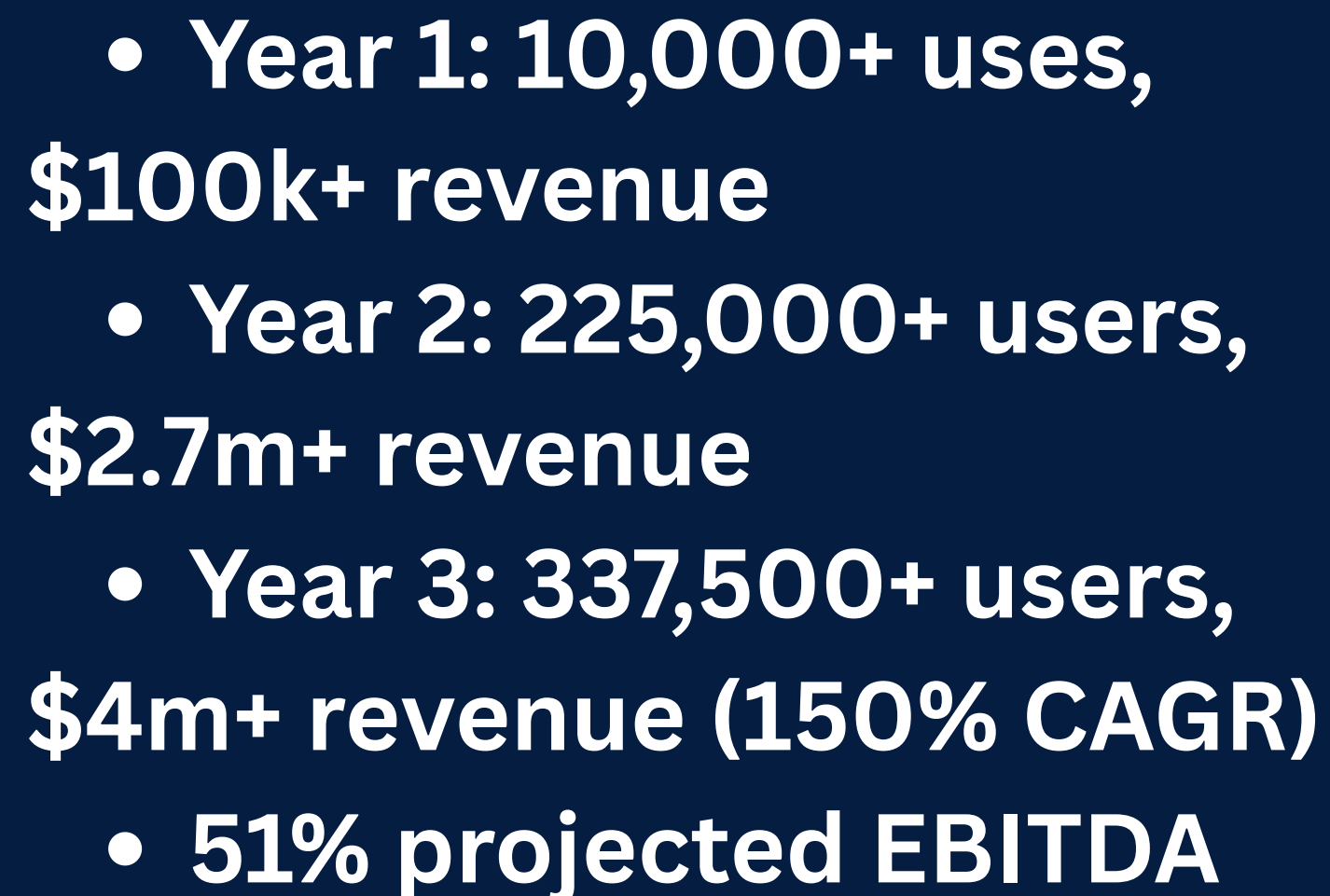


REVENUE MODEL



- Sign-up & profile generation subscription - one off payment
- Corporate/University partnerships - group subscriptions
- Premium Progress Tracking Service (PTS) - annual subscription, renewable
- Data Analytics & insights

"Destiny-Gram offers multiple revenue streams: University licensing: discounted \$12 per student subscription; Corporate partnerships: Custom based on volume; Premium Progress Tracking features for individual users: \$60 per year; Data analytics and insights (anonymized and aggregated). This diversified approach ensures stable revenue growth while allowing flexibility in market penetration strategies."





LEVELS OF SERVICE, DATA SECURITY & PRIVACY

Privacy-First Architecture

04

- User-owned encryption keys
- Zero third-party data sharing without explicit consent
- Comprehensive audit logging for all data access



AI Integration Layer

03

- Standardized profile-sharing protocols compatible with all major AI platforms
- Customizable integration depth based on user preferences
- Real-time profile synchronization capabilities

Secure Data Management Framework

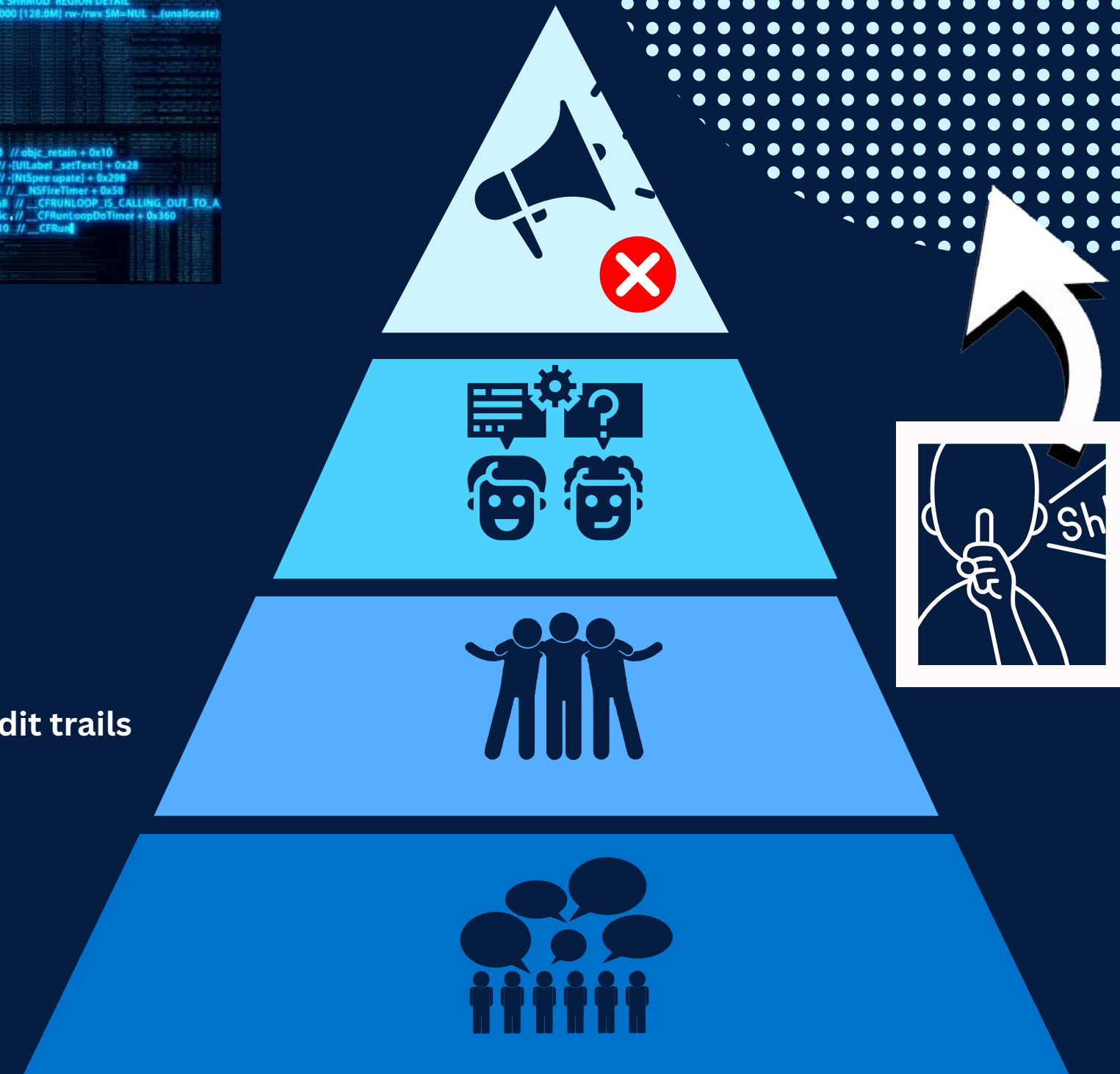
02

- Bank-level encryption for all personal data
- Granular permission controls for selective profile sharing
- Blockchain-based data management providing decentralized storage and immutable audit trails
- Secure API connections to leading AI chatbots including Microsoft Co-Pilot

User Profile Creation System

01

- Proprietary assessment methodology based on validated psychological frameworks
- AI-assisted profile generation through structured questionnaires and data integration
- Natural language processing for nuanced personal characteristic extraction





LEVELS OF SERVICE, DATA SECURITY & PRIVACY

Privacy-First Architecture

04

- User-owned encryption keys
- Zero third-party data sharing without explicit consent
- Comprehensive audit logging for all data access

AI Integration Layer

03

- Standardized profile-sharing protocols compatible with all major AI platforms
- Customizable integration depth based on user preferences
- Real-time profile synchronization capabilities

Secure Data Management Framework

02

- Bank-level encryption for all personal data
- Granular permission controls for selective profile sharing
- Blockchain-based data management providing decentralized storage and immutable audit trails
- Secure API connections to leading AI chatbots including Microsoft Co-Pilot

User Profile Creation System

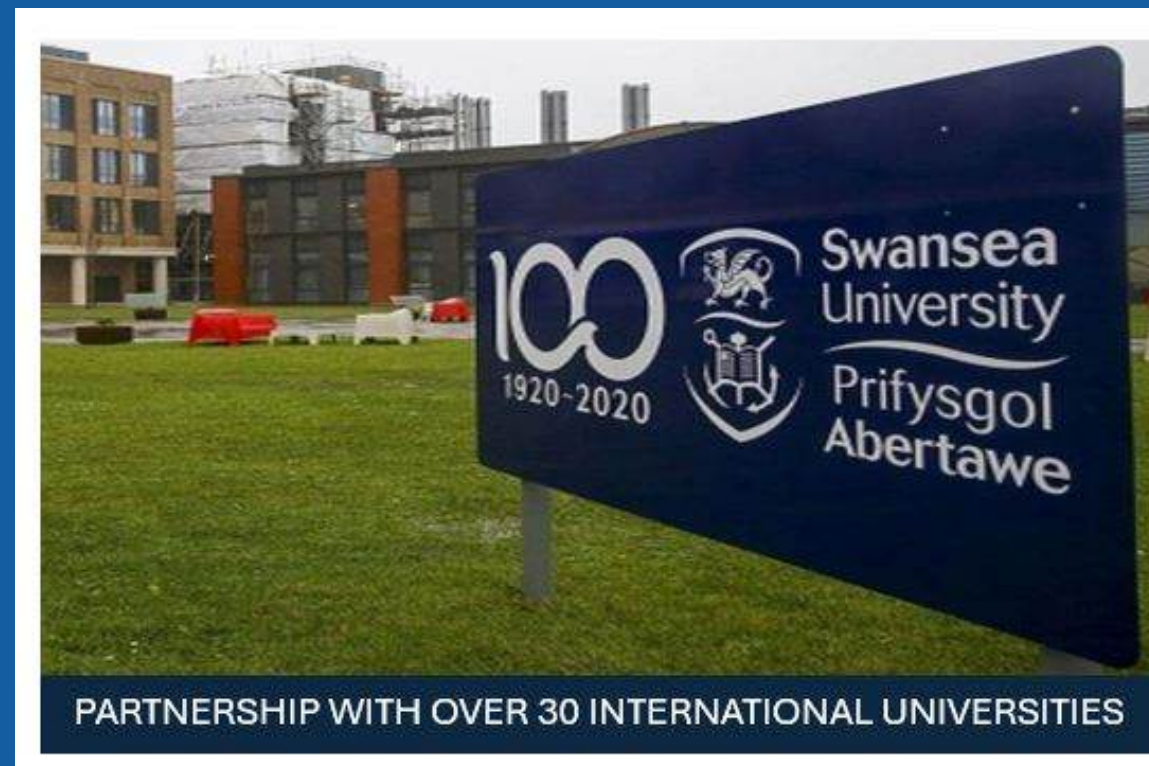
01

- Proprietary assessment methodology based on validated psychological frameworks
- AI-assisted profile generation through structured questionnaires and data integration
- Natural language processing for nuanced personal characteristic extraction



UNIVERSITY PARTNERSHIPS

- Technical Development
- Deployment
- Advisory



"Our university partnership strategy offers multiple pathways for collaboration: Technical Development Partners: Institutions from the world's top Universities, with exceptional AI research capabilities; Deployment Partners: Universities with large student populations for testing environments and validation; Advisory Relationships: Prestigious institutions like MIT, Stanford, Berkeley, and Imperial College for strategic guidance This multi-tiered approach creates a robust ecosystem where different institutions contribute unique strengths, accelerating development while minimizing risk."



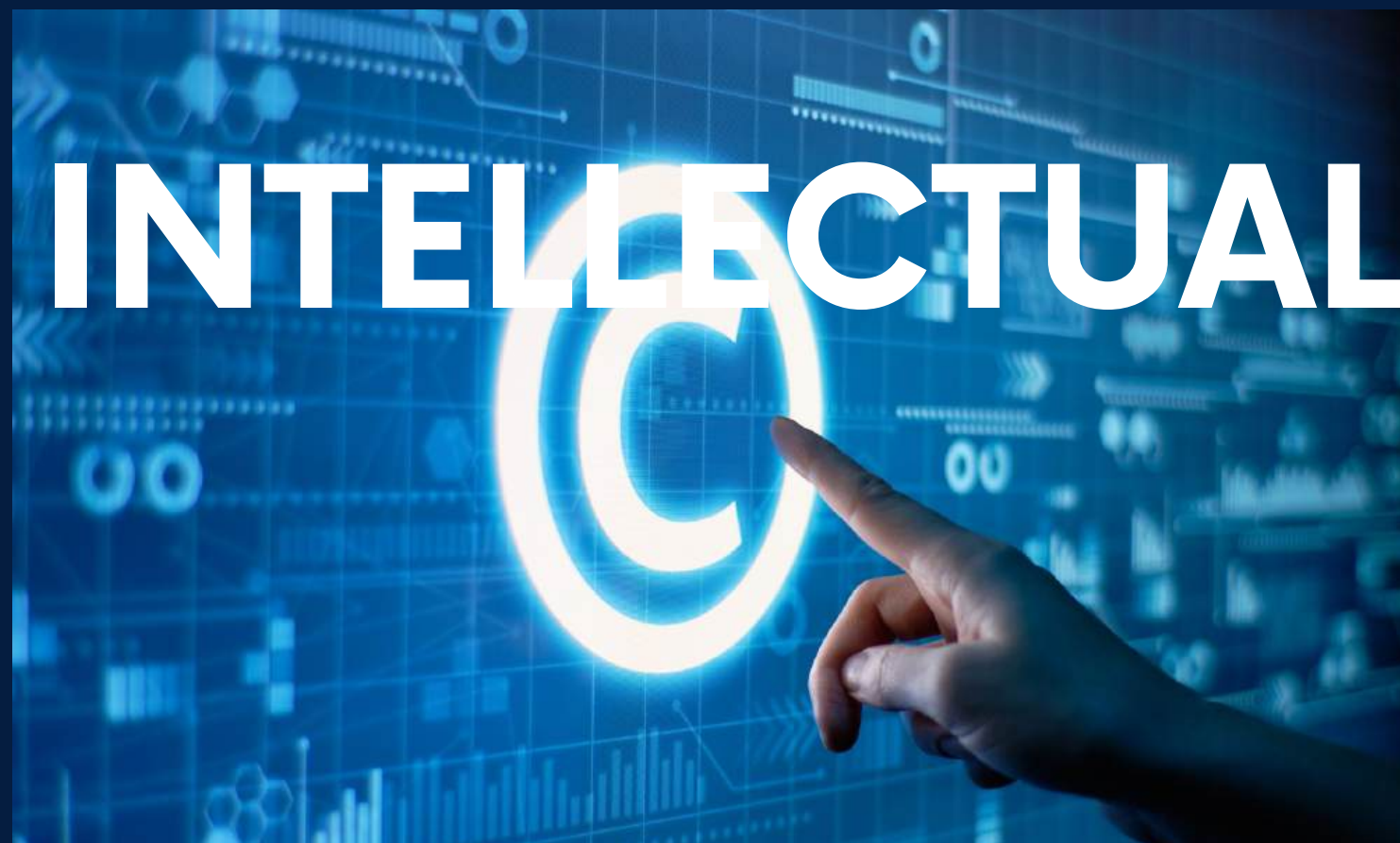
UNIVERSITY PARTNERSHIPS



Global Partnerships



"Our university partnership strategy offers multiple pathways for collaboration: Technical Development Partners: Institutions from the world's top Universities, with exceptional AI research capabilities; Deployment Partners: Universities with large student populations for testing environments and validation; Advisory Relationships: Prestigious institutions like MIT, Stanford, Berkeley, and Imperial College for strategic guidance This multi-tiered approach creates a robust ecosystem where different institutions contribute unique strengths, accelerating development while minimizing risk."



PROPERTY

- **Proprietary profiling algorithms**
- **AI-integrated assessment tools**
- **Secure data synthesis methods**



The intellectual property we've developed is substantial, robust and defensible. Our methods for AI-enhanced profiling and personalization represent a significant advancement that we're actively protecting through strategic IP valuations/filings. Our proprietary technology, which can be placed in escrow as collateral for our pre-revenue startup SAFE financing, includes: Proprietary profiling algorithms; AI-integrated assessment tools; Secure data synthesis methods This IP portfolio provides a strong competitive advantage and significant barriers to entry for potential competitors."



INTELLECTUAL PROPERTY

- **Proprietary profiling algorithms**
- **AI-integrated assessment tools**
- **Secure data synthesis methods**



The intellectual property we've developed is substantial, robust and defensible. Our methods for AI-enhanced profiling and personalization represent a significant advancement that we're actively protecting through strategic IP valuations/filings. Our proprietary technology, which can be placed in escrow as collateral for our pre-revenue startup SAFE financing, includes: Proprietary profiling algorithms; AI-integrated assessment tools; Secure data synthesis methods This IP portfolio provides a strong competitive advantage and significant barriers to entry for potential competitors."



RISK ASSESSMENT

- Adoption challenges
- Technical development delays
- Privacy concerns
- Competitive threats



"We've conducted a thorough assessment of potential risks and developed mitigation strategies: Adoption challenges: Addressed through university partnerships and captive student populations; Technical development delays: Mitigated by our existing 900+ pages of documented code; Privacy concerns: Proactively managed through our privacy-first approach; Competitive threats: Protected by our proprietary IP and first-mover advantage Our phased implementation approach further reduces risk by validating each stage before expanding."



RISK ASSESSMENT

- Adoption challenges
- Technical development delays
- Privacy concerns
- Competitive threats



"We've conducted a thorough assessment of potential risks and developed mitigation strategies: Adoption challenges: Addressed through university partnerships and captive student populations; Technical development delays: Mitigated by our existing 900+ pages of documented code; Privacy concerns: Proactively managed through our privacy-first approach; Competitive threats: Protected by our proprietary IP and first-mover advantage Our phased implementation approach further reduces risk by validating each stage before expanding."



ACCELERATED DEVELOPMENT PROGRAMME - 36 MONTHS

PILOT – EXPANSION – SALE or GLOBAL PARTNERSHIP within 3 years



Stage 1 – Pilot & Proof of Concept

Build MVP Platform – Website with User Profile features and AI-Chatbot Integration. Target launch for controlled pilot group to test and refine.



Stage 2 – Expanded Capabilities & User Population

Growth & Scaling – Broader Marketing & User base, expand personalized AI-Analysis and Interactive Premium Service options



Stage 3 – Acquisition by Corporate Partner

Sale to Corporate Partner – Social Network or AI-Chatbot company to integrate with & leverage existing Users – based on sale +/- or % subscription fee



"For investors interested in a faster path to exit, we've developed an Accelerated Development Programme focusing on rapid proof of concept, exceptional engagement metrics, and strategic positioning for early global corporate integration"



ACCELERATED DEVELOPMENT PROGRAMME

Potential
upside value
\$50-100m

ACCELERATED DEVELOPMENT PROGRAMME

POTENTIAL
VALUE
\$50-100m+

The logo for Destiny-Gram .com, featuring a stylized 'd' inside a blue square with rounded corners, and the text 'Destiny -Gram .com' below it.

Key Metrics Target at Acquisition

- Users: 300,000+
- Revenue: \$3-5M ARR
- Growth Rate: 150%+ year-over-year
- Gross Margin: 80%+
- User Economics: LTV:CAC ratio exceeding 5:1

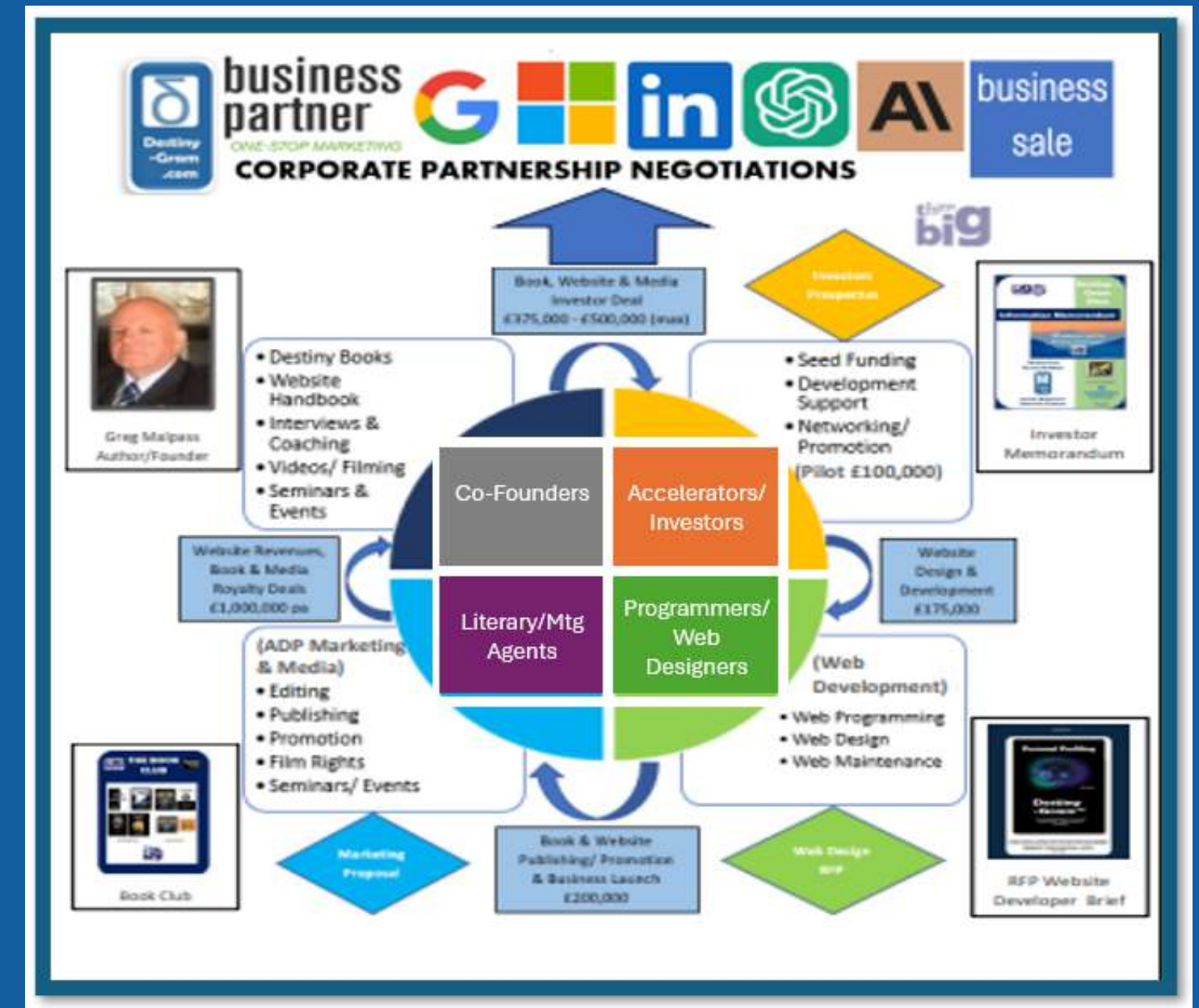
Potential Valuation Range

- Technology/IP Value: \$15-30M
- Revenue Multiple: 10-15x ARR (\$30-75M)
- Strategic Premium for competitive positioning: Additional 30-50%
- Total Potential Value: \$50-100M+

" Key Metrics Target at Acquisition: 300,000+ users, \$3-5M ARR, 150%+ growth rate; Potential Valuation Range: Technology/IP Value of \$15-30M with additional strategic premium; Total Potential Value: \$50-100M+ within 36 months of initial launch"



ASK (FUNDING & USE OF FUNDS)

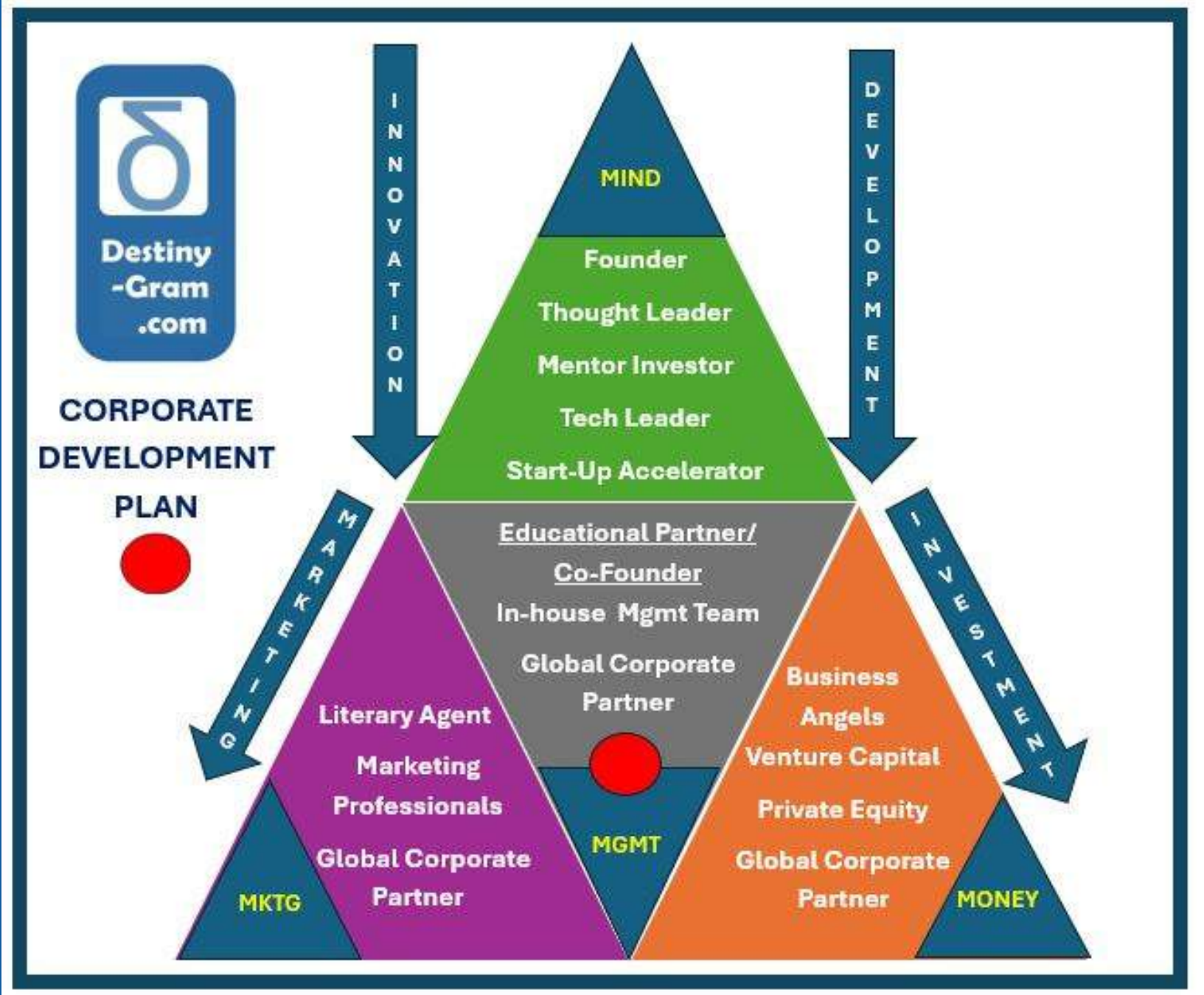


- Establishment SAFE - \$30,000, 3 months
- MVP seed funding - \$125,000, year 1
- National Scaling - \$375,000, year 2
- Corporate Partnership Negotiations, year 3

" Our multi-stage investment approach provides opportunities for strategic partners: Initial Equity Option/Retainer: €30,000 (company establishment, IP security, exclusivity); Stage 1 - MVP (year one): €125,000 seed funding; Stage 2 - SCALING (year two): €375,000 for national scaling; Total: €530,00. This funding will support: Technical development of the MVP, Research validation and partnerships; Initial marketing and user acquisition; Operational costs across each development phase"



ASK (FUNDING & USE OF FUNDS)



Pre-Launch
Funding Total
Euros/Dollars
530,000

MVP & Marketing
to Educational
Establishments
in US/EU



" Our multi-stage investment approach provides opportunities for strategic partners: Initial Equity Option/Retainer: €30,000 (company establishment, IP security, exclusivity); Stage 1 - MVP (year one): €125,000 seed funding; Stage 2 - SCALING (year two): €375,000 for national scaling; Total: €530,00. This funding will support: Technical development of the MVP, Research validation and partnerships; Initial marketing and user acquisition; Operational costs across each development phase"

VISION & CALL TO ACTION



Empowering millions of students

"Destiny-Gram represents a transformative opportunity at the intersection of AI, education, and personal development. Our vision is to empower millions of young adults annually with hyper-personalized AI mentoring while maintaining complete user privacy and control. We invite you to join us as a development partner, strategic investor, or advisor in creating the future of AI-enhanced personal mentoring. Together, we can lead the market in ethical AI personalization while competitors face mounting privacy challenges. Thank you for your time. I look forward to discussing how we can collaborate to bring Destiny-Gram to life and transform the educational experience for millions of students worldwide."

VISION & CALL TO ACTION



Fully engaged and enhanced personal AI-mentoring

"Destiny-Gram represents a transformative opportunity at the intersection of AI, education, and personal development. Our vision is to empower millions of young adults annually with hyper-personalized AI mentoring while maintaining complete user privacy and control. We invite you to join us as a development partner, strategic investor, or advisor in creating the future of AI-enhanced personal mentoring. Together, we can lead the market in ethical AI personalization while competitors face mounting privacy challenges. Thank you for your time. I look forward to discussing how we can collaborate to bring Destiny-Gram to life and transform the educational experience for millions of students worldwide."



**Destiny
-Gram
.com**

**“Destiny is not
a path we
follow, but a
fire we forge...”**

**Destiny-
Gram™**

**with the iron
of our will.”**





DESTINY-GRAM ON YOUTUBE YouTube



Destiny-Gram Partnership Opportunity
AI-Profiling & Mentoring with Integrity

3:17



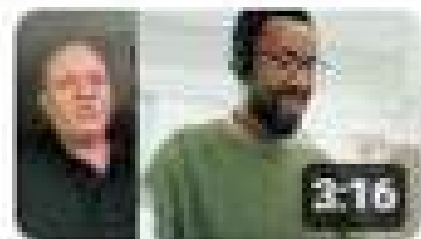
Destiny Awaits You
Hyper-Personalized AI-Mentoring Guiding You to Your Best in Life

1:48



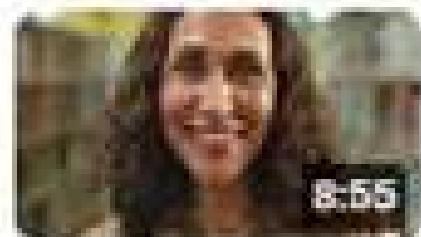
Destiny-Gram AI Profiling and Mentoring (Spanish)
Introduction

3:39



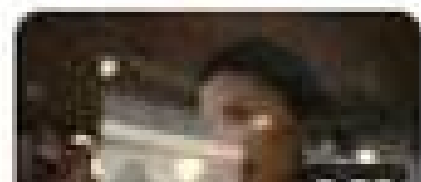
Destiny Gram AI profiling and mentoring Founder Introdu...
The Founder introduces Destiny-Gram

3:16

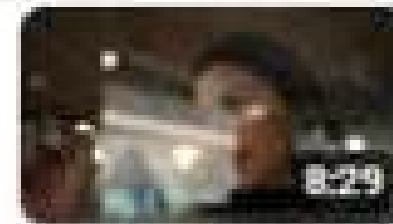


Destiny-Gram Books and Website - Literary Agent Presen...
Merging Personal Development with AI-Mentoring

8:55



Your Impossible Mission Accomplished (spanish)
Add description



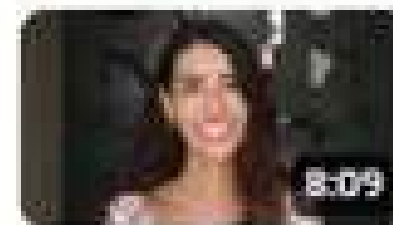
Your Impossible Mission Accomplished (spanish)
Add description

8:29



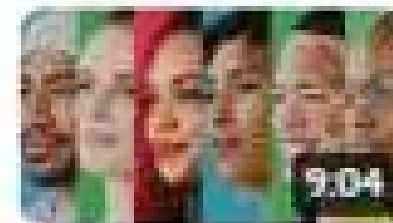
The AI Assisted USA Student Personal Profiling & Life As...
The launch of AI-Assisted Student Personal Profiling and AI-Mentoring in the USA

10:31



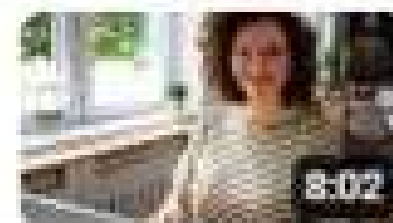
Your Impossible Mission Accomplished Literary Agent P...
The Book that introduces the online AI-assisted Personal Profiling and Life Assessment Platform Destiny-Gram

8:09



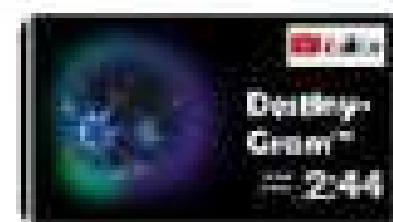
Student Personal Profiling (spanish)
Add description

9:04



Student Personal Profiling by Destiny-Gram
Personal Profiling enabling AI-chatbot Mentorship

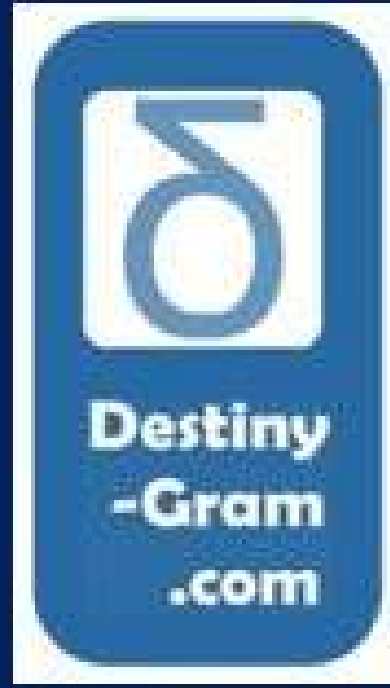
8:02



Destiny-Gram Personal Profiling - An Introduction
An Opportunity in AI-assisted Personal Assessment

Destiny-Gram

2:44



"Empowering Minds through AI"

"THE SOUL AND THE MIND"



King Solomon



"Advancement in Intelligence & pursuit of deeper Wisdom"

**Solomon led with Wisdom and Grace,
Einstein, da Vinci dreamed of the Stars and Space,
At Destiny-Gram we light your Way,
For minds that Build and Souls that Stay.**

**Wisdom,
Vision
&
Wonder**



Leonardo da Vinci



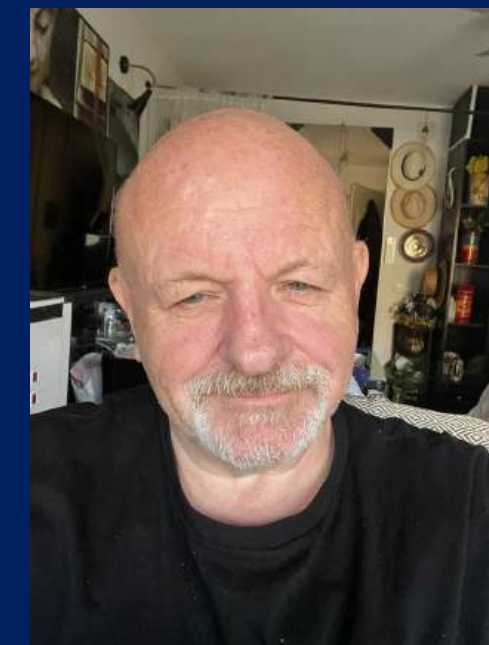
Albert Einstein



Wisdom, Vision and Wonderr



Wisdom, Vision and Wonder



“Harnessing the wisdom of the past, the ingenuity of the present, and the limitless potential of the future, we guide minds toward destiny. At Destiny-Gram, AI is not just technology—it is a mentor, a visionary, a force of transformation. We empower individuals to embrace the boundless intelligence of tomorrow, forging paths of insight, creativity, and innovation. Because the future is not just something to predict—it is something to shape.”

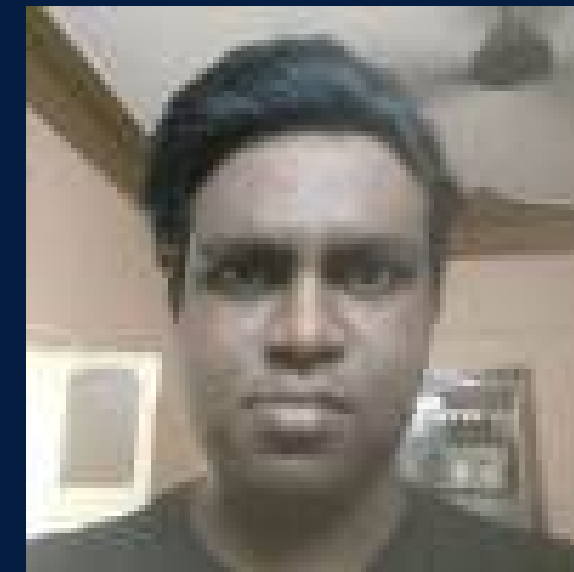
- Greg Malpass (Co-Founder, Destiny-Gram)



Maricarmen
Jamie



Matt & Greg



Subra



Connect with us. **Thank You**
for Your Interest



+44 7850 230692



destinyinvestors@btinternet.com



www.destiny-gram.com

