

Parker

4-5 Bedrooms, 2.5-4.5 Bathrooms, 2,695-3,760 Square Feet



Elevation A (w/ Opt. Brick Watertable)



Elevation B (w/ Opt. Brick Front)



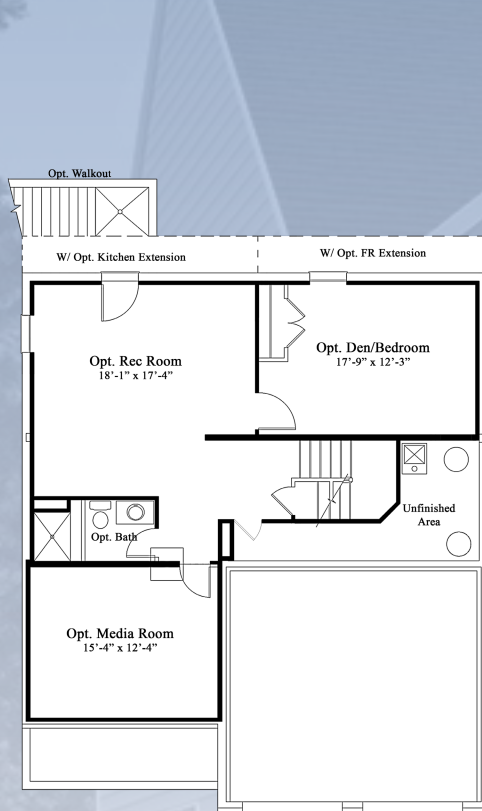
Cornerstone
Homes

MHBR #7864

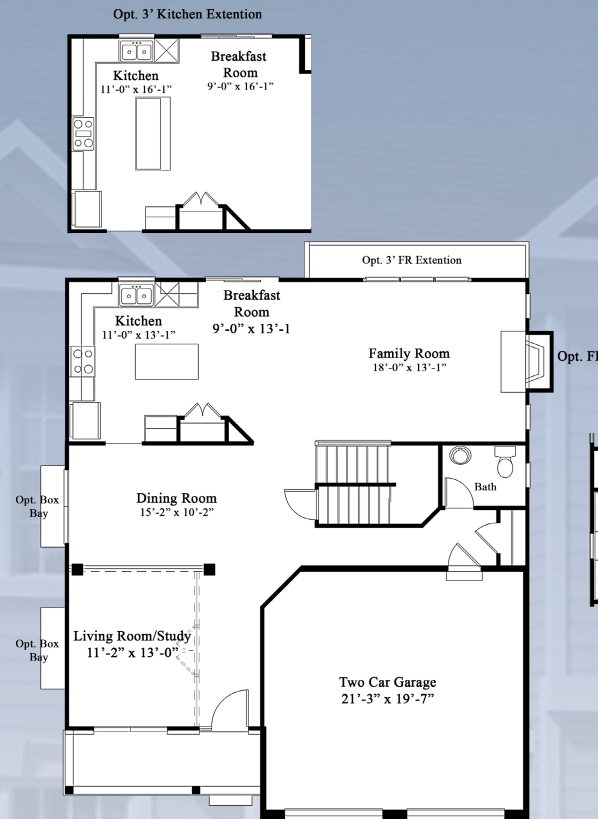
www.cornerstone-homes.com



Parker



Opt. Finished
Basement



Main Floor Plan



Second Floor Plan