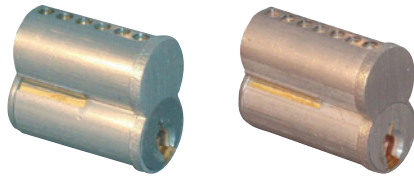


SMALL FORMAT INTERCHANGEABLE (I/C) CORES



206

207

- For Best, Arrow, Falcon and other manufacturer products that use small format I/C cores
- Apart from stocked keyways, other keyways available are B, C, E, F, G, H, K, L, M, Q, 1C & 1D

MFG #	KEYWAY	KEYING	PINS	EZ #
206A26D	A	Uncombined	6	007673
206A26D KA2	A	KA/2	6	035855
206C A26D KD	A	KD	6	051374
206D26D	D	Uncombined	6	007679
206J26D	J	Uncombined	6	007689
207A26D	A	Uncombined	7	007693
207J26D	J	Uncombined	7	007709
CONTROL KEY FOR A KEYED CORES				
CON KEY856947				076524

K

RIM & MORTISE CYLINDER SHELLS



308

316

406
407

316

- Tapered cylinder head (316)
- Set screw from inside cylinder can be used to secure cylinder to lock case

MFG #	PINS	CAM	LENGTH	EZ #
RIM CYLINDER				
308 26D	6	—		007720
MORTISE CYLINDER WITH CAM				
316 601 26D	6	Adams Rite	1-3/8"	007726
MORTISE CYLINDERS LESS CAMS - USE 700 SERIES CAMS				
406 26D	6	Optional	1-1/4"	073500
407 26D	7	Optional	1-3/8"	073501

TOOLS & CAPS



606

610

CAPS

MFG #	DESCRIPTION	EZ #
606	Capping Block & Punch	035856
610	Ejector Punch	035857
CAPS	Cylinder Caps (Package/500)	035854

CAMS FOR 400 SERIES MORTISE CYLINDERS



700

701

702

702L

702S

MFG #	CAMS	EZ #
700	Standard	073503
701	Adams Rite	073504
702	Cloverleaf	073505
702L	Schlage	073506
702S	Sargent	073558

SPECIALTY WARDED PADLOCKS



- Warded locking mechanism minimizes jamming from dirt and grime
- Rustproofed for extended wear
- Steel shackle provides strong cut resistance
- Breakaway shackle (500BRK) enables quick cutting when required

MFG #	SHACKLE TYPE	WIDTH	SHACKLE CLEARANCE	SHACKLE DIAMETER	EZ #
500KABRK197	Breakaway	1-3/4"	1-3/16"	9/32"	010440
517D	Adjustable	1-3/4"	2-3/4" to 5-3/8"	9/32"	010452

RESETTABLE COMBINATION PADLOCKS



- Set-your-own 4-digit combination for convenience and security
- Reset to any of 10,000 personalized combinations
- 2" wide corrosion resistant solid brass case for strength and weatherability
- Hardened steel shackles for cut resistance
- Independent double locking shackle legs
- 5/16" diameter nickel plated case hardened steel shackle
- 1" horizontal shackle clearance
- Carded for display

MFG #	SHACKLE CLEARANCE	EZ#
175D	1"	010273
175DLH	2-1/4"	010274

FIXED COMBINATION PADLOCKS



- Patent Pending BlockGuard® anti-shim technology withstands attempts to violate the latch mechanism
- 3-number dialing with automatic scrambling feature to prevent reopening of lock
- 1-7/8" wide double-reinforced stainless steel body withstands abuse
- 3/4" tall, hardened steel shackle for extra cut resistance
- Shackle diameter: 9/32", vertical shackle clearance: 3/4", horizontal shackle clearance: 13/16"

1525:

- Control key feature for supervisory access; specify key to match existing system or factory assigned

MFG #	DESCRIPTION	CONTROL KEY	EZ #
1500D	Carded Combination	None	010244
1502KD	Combination	None	036190
1525 V52	Combination with Key Bypass	V52	036191
1525 V67	Combination with Key Bypass	V67	071522
MFG #	DESCRIPTION	FOR	EZ #
V52CUT KEY	Control Key	V52	036192
V67CUT KEY	Control Key	V67	074196





CYLINDER PLUGS



MFG #	KEYWAY	CYLINDER	EZ #
33 006CE 626	6 Pin CE	Key-in-Knob/Lever, Deadlock and Rim	037132
33 006E626	6 Pin E	Key-in-Knob/Lever, Deadlock and Rim	013051
33 006EF626	6 Pin EF	Key-in-Knob/Lever, Deadlock and Rim	027565
33 006F626	6 Pin F	Key-in-Knob/Lever, Deadlock and Rim	013053
33 006G626	6 Pin G	Key-in-Knob/Lever, Deadlock and Rim	027567

LARGE FORMAT INTERCHANGEABLE CORE



MFG #	KEYWAY	EZ #
23 030C626	6 Pin C 1 Bitted	013001
23 030C123 626	Everest C123 1 Bitted	071457
23 030CE 626 1BIT	6 Pin CE 1 Bitted	037128
23 030E 626 1BIT	6 Pin E 1 Bitted	037129
23 030F 626 1BIT	6 Pin F 1 Bitted	037130
CONTROL KEY BLANKS		
35 056C	C	013091
35 056E	E	028688
48 056F	F	037139

KEY BLANKS



EVEREST



CONVENTIONAL

MFG #	KEY BLANK	EZ #
EVEREST		
35 009C123	6 Pin C123	071258
35 009C145	6 Pin C145	071259
CONVENTIONAL		
35 100C	5 Pin C	013092
35 100E	5 Pin E	013094
35 101C	6 Pin C	013102
35 101CE	6 Pin CE	013103
35 101D	6 Pin D	039564
35 101E	6 Pin E	013104
35 101EF	6 Pin EF	013105
35 101F	6 Pin F	013106
35 101G	6 Pin G	027580
35 101T	6 Pin T	071379