

CEPSI PDU for Shipboard Applications

The **CEPSI PDU** product line is designed to provide high reliability power distribution to critical power loads in shipboard applications.

These units feature a small form factor and lightweight chassis that is easy to mount. Rackmount models feature a rotating mounting bracket that allows for vertical or horizontal mounting.

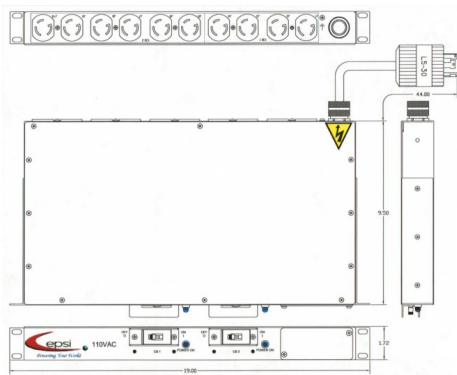
The high outlet density and a variety of plug/receptacle configurations make it easy to find a configuration that meets your needs.

These configurations are stocked for high availability.

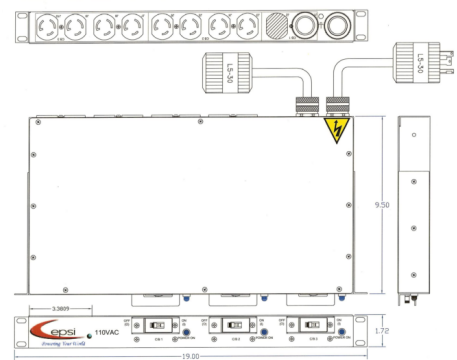
PRODUCT OVERVIEW



CEPSINGMS3KPDUI



CEPSINGMS3KPDU2



AVAILABLE MODELS



C R I T I C A L & E M E R G E N C Y P O W E R S Y S T E M S , I N C .

FEATURES AND BENEFITS



- * Cord lengths up to 15 feet
- * Rackmount or 24", 48" or 60" lengths for outlet accessibility
- * High outlet density up to 36 outlets
- * Variable clip foot and button mounting options
- * Single-Phase 15A to 30A, 120-volt and 240-volt configurations
- * UL 60950 approved for IT or data center use

TECHNICAL SPECIFICATIONS



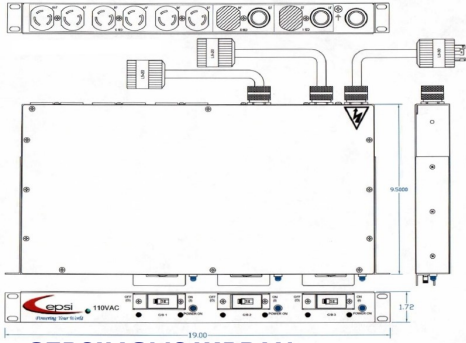
- * 19" W X 1.72" H X 9.5" D
- * Single-phase
- * No filter
- * 110, 220 or 200-240 VAC In, 24 A Max Derated Current
- * L5-30 or L6-30 Input Plug
- * UL Recognized Components
- * Circuit Breakers UL Listed High-Inrush, Time Delay Curve
- * Blue Indicator Lights—one for each breaker

Phone: 800-778-5684 ext. 1
Fax: 804-598-6834 ext. 1
E-mail: info@cepsi.biz
www.cepsi.biz

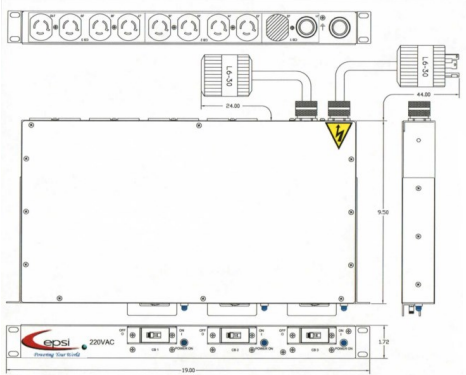
PO Box 713
Midlothian, VA 23113

Product Details

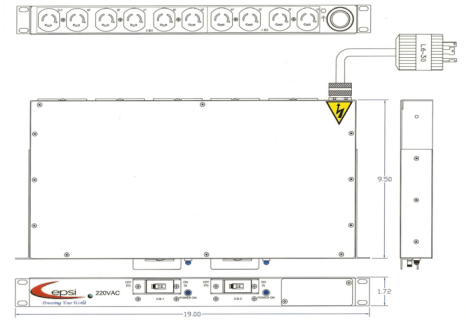
CEPSINGMS3KPDU3



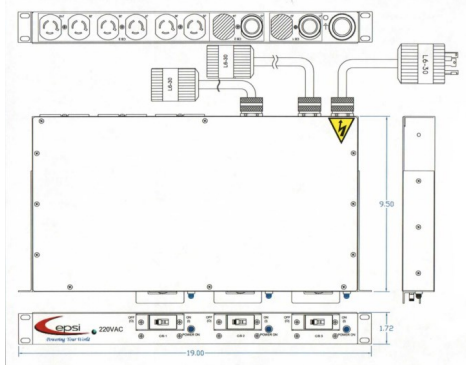
CEPSINGMS6KPDU1



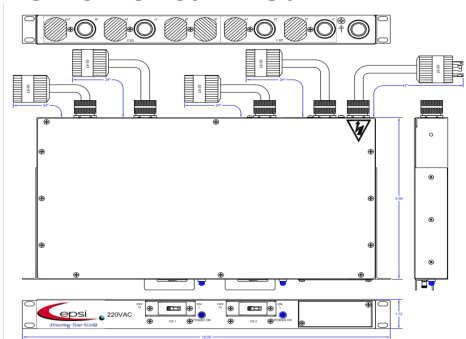
CEPSINGMS6KPDU2



CEPSINGMS6KPDU4



CEPSINGMS6KPDU6



PRODUCT	INPUT	POWER CABLE
CEPSINGMS3KPDU1	110 VAC, 60 HZ, 24A	10/3 SOOW CABLE, 43.5" L5-30 PLUG
CEPSINGMS3KPDU2	110 VAC, 60 HZ, 24A	10/3 SOOW CABLE, 44" L5-30 PLUG
CEPSINGMS3KPDU3	110 VAC, 50/60 HZ, 24A	10/3 SJOOW CABLE, 18" L5-30 PLUG
CEPSINGMS6KPDU1	220 VAC, 50/60 HZ, 24A	10/3 SJOOW CABLE, 44" L6-30 PLUG
CEPSINGMS6KPDU2	220 VAC, 60 HZ, 24A	10/3 SOOW CABLE, 43.5" L6-30 PLUG
CEPSINGMS6KPDU4	220 VAC, 60 HZ, 24A	10/3 SOOW CABLE 43.5" L6-30 PLUG
CEPSINGMS6KPDU6	200-240 VAC, 50/60 HZ, 24A	10/3 SJOOW CABLE 44" L6-30 PLUG

PRODUCT	OUTPUT
CEPSINGMS3KPDU1	110 VAC @ (10) NEMA L5-15 OUTLETS (J1-J10)
CEPSINGMS3KPDU2	110 VAC—(1) NEMA CABLED L5-30 OUTLET (J1) 10/3 SOOW 24" (8) NEMA 5-20 OUTLETS (J3-J10)
CEPSINGMS3KPDU3	110 VAC, 16A @ (1) NEMA CABLED L5-20 OUTLET (J1) 12/3 SJOOW CABLE 9" 110 VAC, 12A @ (8) NEMA L5-15 OUTLETS (J3-J10)
CEPSINGMS6KPDU1	220 VAC @ (1) NEMA CABLED L6-30 OUTLET (J1) 10/3 SJOOW 24" 220 VAC, 12A @ (8) NEMA L6-15 OUTLETS (J3-J10)
CEPSINGMS6KPDU2	220 VAC @ (10) NEMA L6-15 OUTLETS (J1-J10)
CEPSINGMS6KPDU4	220 VAC—(2) L6-30 NEMA CABLED OUTLETS (J1 & J3) 10/3 SOOW 24" (6) NEMA L6-15 OUTLETS (J5-J10)
CEPSINGMS6KPDU6	200-240 VAC @ (4) NEMA CABLED L6-30 OUTLETS (J1, J3, J7 & J9) 10/3 SJOOW CABLES 24"

PRODUCT	SPIKE SURGE SUPPRESSION	INDICATOR LIGHTS	CIRCUIT BREAKERS
CEPSINGMS3KPDU1	LINE-NEUTRAL LINE-GROUND	TWO	MAGNETIC, 1-POLE CB1 15A 1-POLE CONTROLS J1-J4 CB2 15A 1-POLE CONTROLS J5-J10
CEPSINGMS3KPDU2	LINE-NEUTRAL LINE-GROUND	THREE	MAGNETIC, 1-POLE CB1 30A 1-POLE CONTROLS J1 CB2 15A 1-POLE CONTROLS J3-J6 CB3 15A 1-POLE CONTROLS J7-J10
CEPSINGMS3KPDU3	LINE-NEUTRAL LINE-GROUND	THREE	THREE 1-POLE UL LISTED CB1 20A CONTROLS J1 CB2 15A CONTROLS J3-J6 CB3 15A CONTROLS J7-J10
CEPSINGMS6KPDU1	LINE-LINE LINE-GROUND	THREE	MAGNETIC, 2-POLE CB1 30A 2-POLE CONTROLS J1 CB2 15A 2-POLE CONTROLS J3-J6 CB3 15A 2-POLE CONTROLS J7-J10
CEPSINGMS6KPDU2	LINE-LINE LINE-GROUND	TWO	MAGNETIC, 2-POLE CB1 15A 2-POLE CONTROLS J1-J4 CB2 15A 2-POLE CONTROLS J5-J10
CEPSINGMS6KPDU4	LINE-LINE LINE-GROUND	THREE	MAGNETIC, 2-POLE CB1 30A 2-POLE CONTROLS J1 CB2 30A 2-POLE CONTROLS J3 CB3 15A 2-POLE CONTROLS J5-J10
CEPSINGMS6KPDU6	LINE-LINE LINE-GROUND	TWO	TWO 2-POLE UL LISTED CB1 30A CONTROLS J1 & J3 CB2 30A CONTROLS J7 & J9

AVAILABLE MODELS

