

ROOM DIMENSIONS MAY CHANGE PER CONSTRUCTION PRINTS.

SHIP AS 16 WIDE

K539H 3BD - 2BA 5928 (1470 SQ. FT. LIVING)
(1542 SQ. FT. TOTAL)

SCALE: 1/8" = 1'-0"

CUSTOMER: ----



DIVISION 31, P.O. BOX 670
SAN JACINTO, CA 92581
(951) 654-9321

REVISIONS

REVISION DATE:
REVISION BY:

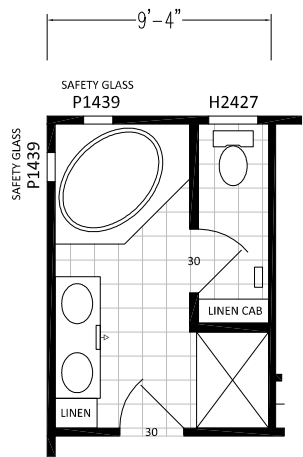
DRAW DATE: 7-5-17
DRAWN BY: DCS

DRAWING TITLE:
SALES FLOOR PLAN
5928-3BD-2BA

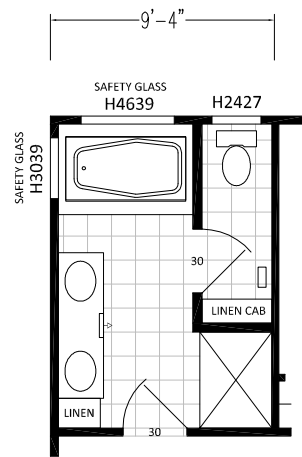
MODEL NO.
K539H

MODEL REV. G
DAPIA REV. 2

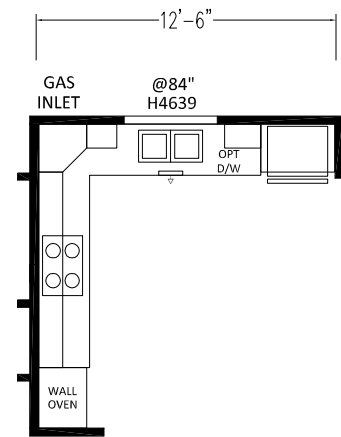
SHEET NO. AL-101
REF NO. ---



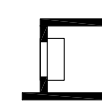
OPTIONAL CORNER TUB BATH



OPTIONAL PLATFORM TUB BATH



OPTIONAL COOKTOP KITCHEN



OPT LN/RET AIR

SCALE: 1/8" = 1'-0"

CUSTOMER: ----



DIVISION 31, P.O. BOX 670
SAN JACINTO, CA 92581
(951) 654-9321

REVISIONS

REVISION DATE:

DRAW DATE: 7-5-17

DRAWING TITLE:

SALES FLOOR PLAN OPTIONS
5928-3BD-2BA

MODEL NO.

K539H

MODEL REV. G

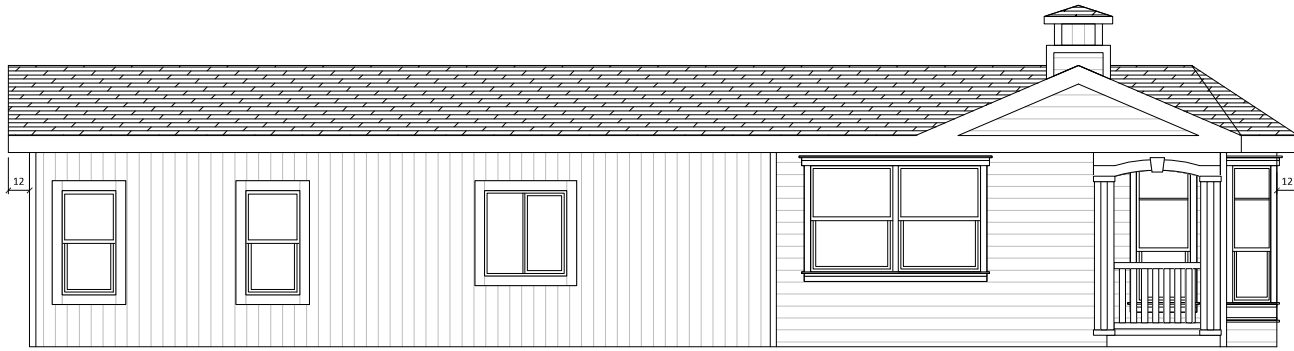
DAPIA REV. 2

SHEET NO. AL-102

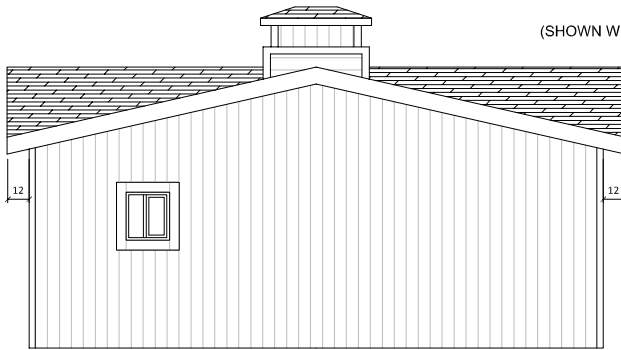
REF NO. ---

REVISION BY:

DRAWN BY: DCS



LEFT
(SHOWN WITH OPTIONAL CUPOLA)



REAR
(SHOWN WITH OPTIONAL CUPOLA)



FRONT
(SHOWN WITH OPTIONAL CUPOLA)



RIGHT
(SHOWN WITH OPTIONAL CUPOLA)

CUSTOMER: ----



DIVISION 31, P.O. BOX 670
SAN JACINTO, CA 92581
(951) 654-9321

REVISIONS

REVISION
DATE:

DRAW
DATE: 7-5-17

DRAWING TITLE:

EXTERIOR ELEVATIONS

MODEL NO.

K539H

MODEL
REV. G

SHEET NO.
AE-101

REVISION
BY:

DRAWN
BY: DCS

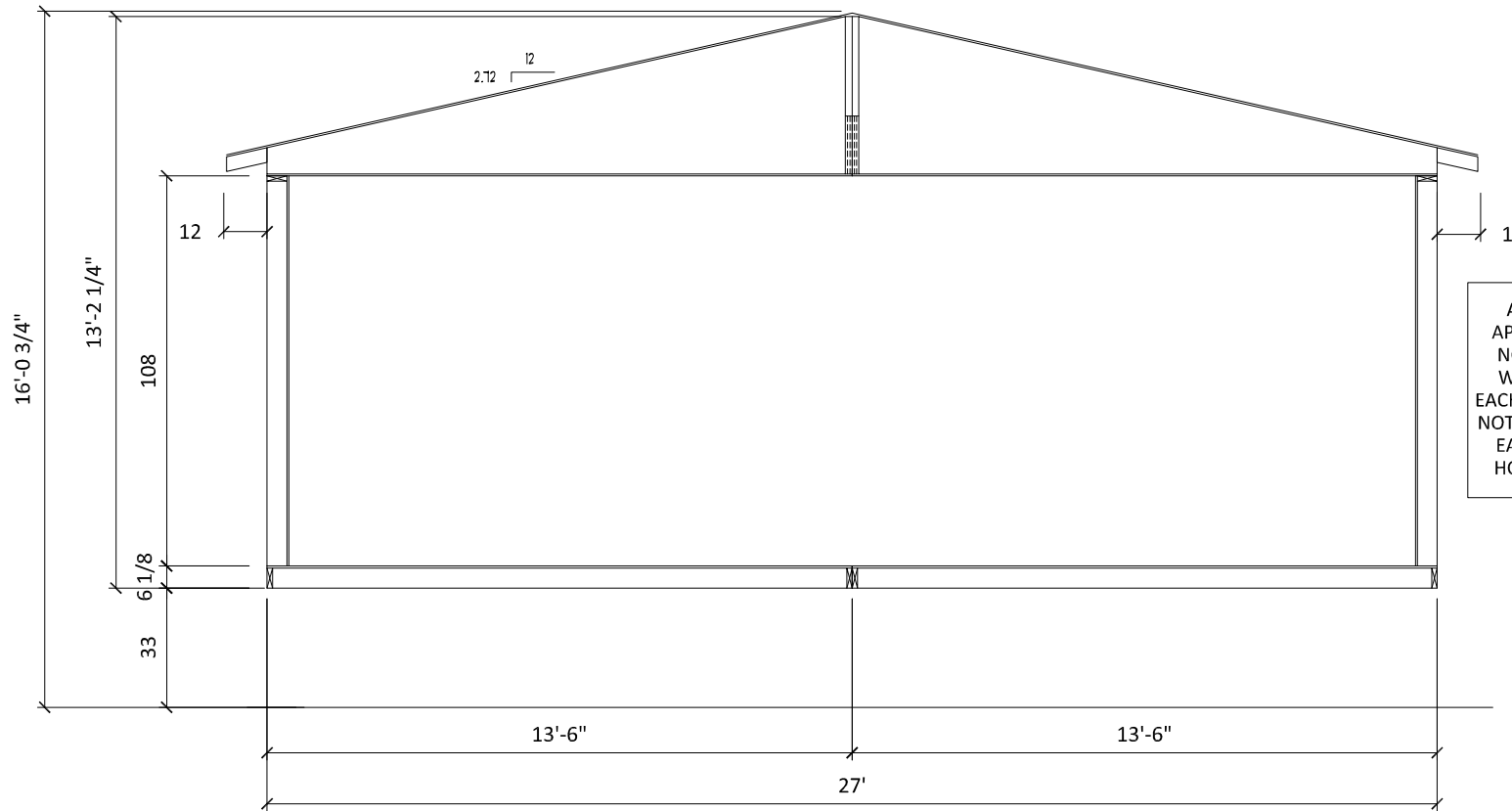
5928-3BD-2BA

DAPIA
REV. 2

REF NO.

F-49-V TRUSS

F-49-V TRUSS



ALL DIMENSIONS ARE APPROXIMATE AND MAY NOT REFLECT THE TRUE WIDTH AND HEIGHT OF EACH UNIT. DIMENSIONS DO NOT INCLUDE SIDING, TRIM, EAVES, ROOF DRIP RAIL, HOSE BIBBS, FLUES, ETC.

UNIT DIMENSIONS ARE NOT TO BE USED AS SHIPPING DIMENSIONS.

CUSTOMER: ----



DIVISION 31, P.O. BOX 670
SAN JACINTO, CA 92581
(951) 654-9321

REVISIONS

REVISION DATE:

DRAW DATE: 7-5-17

DRAWING TITLE:

MODEL NO.

MODEL REV. G

SHEET NO. AS-101

REVISION BY:

DRAWN BY: DCS

CROSS SECTION
5928-3BD-2BA

K539H

DAPIA REV. 2

REF NO. ---