

BAYSHORE



**WINDMILL
VILLAGE**

Bayshore Windmill Village Co-Op

A Resident Owned, Over 55, Pet Free, Mobile Home Community
Amenities include pool, shuffleboard, library with Wi-Fi, laundry facilities, clubhouse and full activities schedule.

~

Co-Op Shareholder Monthly Maintenance Fee \$285

(Homes are priced with the Share if noted "Share")

Home Owners Monthly Lot Rent Fee \$555

Includes Lawn Maintenance, Water, Sewer and Garbage

941.755.2942



W-17 \$135,000

Two bedrooms, two bathrooms, den, full ext. porch, long driveway, shed, hard surface flooring throughout. Many upgrades in this 2020 Champion home! Share can be added for additional \$42k Floor plan on other side.

**Onsite Agent; Stacy Brown
809-1318 / 755-2942**



C-11 \$72,900

Share. Double wide 2/2 plus lanai. Great layout with larger bathrooms. Well maintained. Roof-over w recent roof inspection / 10 yr useful life.

Onsite Agent; Stacy Brown 809-1318 / 755-2942



I-1 \$49,000

Double wide 2/2 Complete modern update with insulated laminate flooring, designer details at every turn! Extra large north facing lanai, double length carport, interior laundry and on a corner lot! Turnkey unit.

**Onsite Agent; Stacy Brown
809-1318 / 755-2942**



W-2 \$65,900

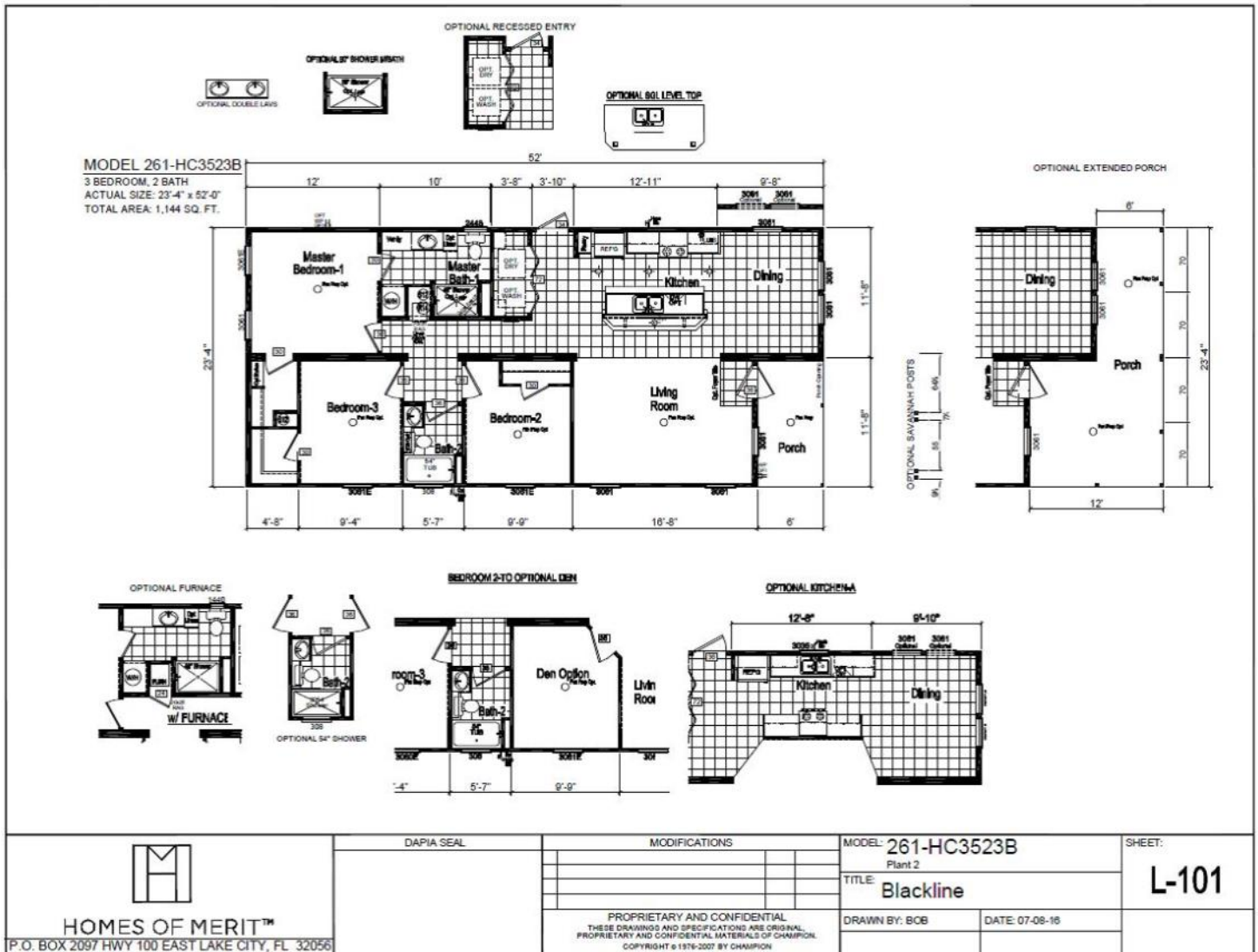
Share. Double wide 2/1.5 Prime location directly across from the clubhouse! Fully enclosed lanai, dbl shed with w/d, dbl length carport. Ready for your special touches! Unfurnished. **Onsite Agent; Stacy Brown 809-1318 / 755-2942**



B-17 \$34,000

Double wide 2/1.5 Impeccably maintained home! Updates include drywall, subfloor, bathrooms, plumbing and flooring surface. Tented in 18' w warranty. This is move in ready and fully furnished! Priced to sell!

**Onsite Agent; Stacy Brown
809-1318 / 755-2942**



W-17 \$135,000

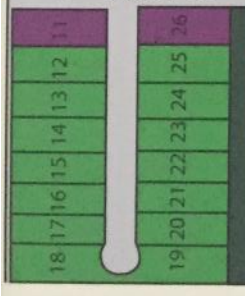
Two bedrooms, two bathrooms, den, full ext. porch, long driveway, shed, hard surface flooring throughout. Many upgrades in this 2020 Champion home! Share can be added for additional \$42k Floor plan on other side.

Onsite Agent; Stacy Brown 809-1318 / 755-2942



LOTS AVAILABLE

- | | | |
|------|------|------------|
| A-4 | J-10 | S-11 |
| A-6 | J-15 | S-17 |
| C-3 | J-18 | HA24 |
| C-5 | K-6 | HA-27 |
| C-14 | K-15 | W-17 Model |
| G-2 | M-4 | |
| G-18 | M-6 | |
| E-14 | N-5 | |
| I-10 | P-4 | |
| I-17 | R-13 | |
| J-8 | S-7 | |



Bayshore Gardens Pkwy



63rd Avenue West