



# SAABE TIMES

A publication of the San Antonio Association of Building Engineers

March 2010

Mark Your Calendar—

## JOIN US FOR OUR MARCH MEETING!

The next General Membership Meeting of the San Antonio Association of Building Engineers is set for 11:30 am on Wednesday, March 17, at the Embassy Suites Hotel (7750 Briaridge Drive; northeast corner of IH-10 and Loop 410).

Bob Nelson from CPS Energy will provide a presentation on their 2010 Commercial Rebate Program. Also, Rick Luna, Program Manager at CPS Energy, will briefly review a new 2010 program titled, "Commercial Demand Response." The meeting sponsor is CPS Energy.

**IMPORTANT NOTE:** We expect a large turn-out for this luncheon, so RSVPs are very important. Walk-ins and RSVPs received later than Tuesday, March 16 at noon will be asked to wait in the lobby until we determine if we have enough seating.

If you must cancel your attendance, please call Melodie Goff at 408-8135 BY **TUESDAY, MARCH 16, AT NOON** so we can cancel your meal.

Please make sure to check in at the front desk when you arrive.

**RSVPs are REQUIRED, so we can be sure to have enough meals on hand! ♦**

## Engineer Spotlight

by Jeff Turov



**Paul Melendez**

The University of Texas at Arlington  
Operator III  
One UTSA Circle  
San Antonio, TX 78249-0673  
(210) 458-5256

• **How long have you been in the building engineer trade?**

I have been in the building maintenance industry for approximately 25 years and have been with UTSA for ten of those years. My responsibilities at UTSA run the gamut and include all forms of building maintenance. I have been a member of SAABE for five years.

• **What is the most challenging aspect of working at UTSA?**

The campus at UTSA is comprised of 4 million square feet of area that needs to be maintained. We have nine people in our Utilities Operations department that work to keep things in tip-top shape. Some areas are more challenging than others – such as our science labs. These areas are monitored and are alarmed in the event a chemical spill occurs. Keeping a safe and efficient campus is our main goal.

• **Any awards, recognition, or special training?**

I have earned my SMT and have one class left to complete my SMA certification.

• **Family and children?**

I have three children – two sons and one daughter.

• **Hobbies/what do you enjoy during off-hours?**

The most effective and beneficial stress relief I have found is exercise. I enjoy swimming and mountain biking and used to play a lot of basketball until my knees stopped cooperating. I also enjoy the great outdoors.

CELEBRATING  
**25** YEARS  
OF EXCELLENCE IN  
BUILDING ENGINEERING

(Continued on page 8)

## A Message from the President

by Charles Mikolajczyk, Jr., CBE-M

Some simple rules follow regarding temporary electrical cords/extensions. You must ensure that the sizing of the conductors/cord is compatible to the device it is connected to.

In most commercial building environments, common area duplexes are of the 20 amp variety. Without question, this 20 amp duplex is most probably provided electrical energy with a #12 AWG conductor(s). There is also the remote possibility that, due to the distance from the service panel, a #10 AWG may have been installed. Please note that a #12 AWG is typically installed on 20 amps circuits. A #10 AWG is typically installed on 30 amp circuits but may often be used on 20 amp circuits to make up for the voltage drop across long distances.

This 20 amp circuit is typically provided with over-current protection via a thermal magnetic safety device (i.e., a breaker). In newer installations, the safety device may also be a Ground Fault Circuit Interrupter (GFCI) typically used to protect human life in wet environments or an Arc Fault Circuit Interrupter (AFCI) used to protect property. In the majority of older applications, a simple breaker for interior duplexes is the only safety mechanism. Typically, a 20 amp breaker will operate at around 80% of the rated capacity, or around 16 amps.

The use of any cord or temporary extension should, at the least, meet that of the device it is connected to. If you, or someone else, is connecting to a 20 amp circuit, the extension cannot be rated at a lesser value. Otherwise, the use of an extension of less conductor than that of which is supplied will collapse before the safety mechanism has a chance to operate. The visual identification between a 15 amp and a 20 amp duplex is also simple. If you need assistance in how to visually determine this, please contact me.

The first rule is to never use or allow a cord or temporary extension to be used that is of less capacity than the connected circuit. If a #14 or #16 conductor is used on a 20 amp circuit and loaded to the temporary cord's limits or beyond, the insulation on these smaller conductors will fail, and, in most instances, before the breaker has a chance to operate - thus possibly igniting any combustible materials.

# RediFuel®

**1-800-RediFuel**  
**(733-4383)**

**24 Hour  
Generator  
Fueling  
Service**

**Ask About**

## **“KeepFull”**

**A First Priority Service**

The second rule is to only use the appropriate length needed. Much like not taking a knife to a gunfight, never use a 20' cord when only 5' is needed. Never ever allow long extensions to be coiled. This action can be compared to the heating coils on an electric oven, and infinity could be reached in a relatively short time frame.

The third rule is that the temporary cords found at Bubba's Dollar Store should never ever be allowed in a commercial environment or in your home as well.

The fourth and fifth rule is never say never, and don't depend on someone else!

Hopefully, following these basic steps and ensuring these steps are taken throughout your building/facility will save some great heartache.

I would like to express thanks to John O'Brien/InVision Window Tinting for sponsoring last month's Last Thursday Training "Window Tint 101." Also thank you to Louis Giles from the Optibelt Corporation for the presentation on "V-Belt Advancement and Their Role in Energy Efficiency." And, thank you to the Joe W. Fly Company for sponsoring the February luncheon! ❖

*Call David Harding Today*

# PAVECON

18680 Marbach Lane • San Antonio, TX 78266  
**San Antonio:** 210.798.1111 **Fax:** 210.798.1112  
**Austin:** 512.329.9148 **Cell:** 210.669.3639  
**Email:** davidh@pavecon.com  
**www.pavecon.com**



## Vendor Rep Report

by Allen Mangrum

As I write this, the sun is shining and the birds are chirping, and it's great to be alive!

At the February meeting, we had a great turn out, and I really enjoy seeing everyone each month. I have found the value of knowing this many building engineers and fellow vendors to be invaluable. I never get tired of learning new things, and, on the occasion I get a little full of my own knowledge, it always seems that y'all can teach me something new. I enjoy the camaraderie as well as the friendships I make on a daily basis.

To our engineers, stay posted for some "new" mixers coming up and try to attend, as we will be attempting to move them around town so that as many that can come will. These are an avenue for both our Vendors, as well as the Engineers, to let your hair down, talk about other things than shop and have a good time. We will keep you posted as to when the next one will be held.

As usual, please remember to RSVP, and keep the greasy side down! ❖

## Job Openings

There are several job openings currently listed on the SAABE website ([www.saabe.org](http://www.saabe.org)). Visit the site for full details.

If you have job openings, please forward them to [laurabray@braycommunications.com](mailto:laurabray@braycommunications.com) for posting. ❖



**RAY HEGWER**  
Estimator

OFFICE (210) 599-3838  
FAX (210) 599-3737

4047 Stahl #4  
San Antonio, Tx. 78217-1670

[www.dulaneyexteriorsolutions.com](http://www.dulaneyexteriorsolutions.com)  
e-mail: [company@dulaneyexteriorsolutions.com](mailto:company@dulaneyexteriorsolutions.com)

SEALANTS • WATERPROOFING • EPOXY INJECTION • DECK COATING

**MGi** **M. K. Garrett, Inc.**  
*"Cooling Tower Services & Parts"*

Another **MIS** Company

**Keith Garrett**  
Manager of Field Services

12803 O'Connor Road  
San Antonio, TX 78233

Office 210.967.7300  
Mobile 210.902.9764  
Fax 210.967.7304

[keith@mkgarrett.com](mailto:keith@mkgarrett.com)  
[www.mkgarrett.com](http://www.mkgarrett.com)  
Lic. # TACLA019983C

## SAABE March Last Thursday Training Seminar

Save the date for this month's Last Thursday Training Seminar. The topic for this month's seminar is "Irrigation News That You Can Use," and the presenter is John Leifester from Preferred Landscape and Lighting which is also this month's training seminar sponsor.

**Where:** First National Bank (6243 IH 10 W)  
Fourth floor conference room (next to deli)

**When:** Thursday, March 25, 11:30 am - 1:00 pm  
(Lunch provided by Preferred Landscape and Lighting )

Preferred Landscape and Lighting is a provider of professional landscaping and lighting services specializing in:

- Residential and commercial landscape design, installation and maintenance
- Irrigation design, installation and maintenance
- Pond and water feature design, installation and maintenance
- Tree installation, pruning and removal
- Holiday, special event and landscape lighting design and installation
- Landscape lighting design and installation

For more information about Preferred Landscape and Lighting, contact John Leifester at (210) 771-7081 or [jleifester@preferredlandscapetx.com](mailto:jleifester@preferredlandscapetx.com). Or, visit their website at [www.preferredlandscapetx.com](http://www.preferredlandscapetx.com).

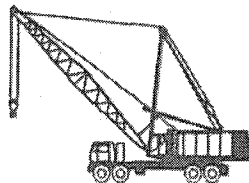
The seminar is open to **SAABE Engineers and their assistants only**, and there is no cost to attend. There is a limit of 25 attendees.

If you are coming, please email [mgoff@braycommunications.com](mailto:mgoff@braycommunications.com). Please RSVP by Wednesday, March 24 so we know how many lunches to order. If you RSVP and cannot attend, please call Melodie Goff at (210)408-8135 so she can move someone off the waiting list. ❖

### HOWELL CRANE & RIGGING, INC.

**AUDIE HOWELL**  
Vice President  
PHONE (210) 661-8285  
FAX (210) 661-7683  
MOBILE (210) 962-5301  
1-800-438-9814  
HOME (210) 649-3726  
email: [audie@howellcrane.net](mailto:audie@howellcrane.net)  
24-HOUR SERVICE  
CRANES 15 TO 500 TON  
P.O. BOX 200576  
SAN ANTONIO, TEXAS 78220

**#1 in SAFETY!**



## Complete Power Solutions

By providing superior products, backed by outstanding service, Cummins Southern Plains is the recognized leader in Cummins Power Generation throughout Texas and Oklahoma. Leading edge technology and full service capabilities make us the ones to count on. Let us show you how we can meet your power needs.

- Generator Sales, Service & Rental
- 10kW-2.7MW Diesel & 10kW-1.75MW Natural Gas Generators
- Automatic & Bypass Isolation Transfer Switches
- Digital Paralleling Controls & Switchgear
- Planned Maintenance Agreements
- NPPA 110 - Loadbank Testing

For more information, call  
**800.364.4884** or visit us  
at [www.cummins-sp.com](http://www.cummins-sp.com)



Cummins  
Southern Plains, LLC

Our energy working for you.™



## Education Corner

### Mistake-Free Grammar and Proofreading

- Sponsored by Fred Pryor Seminars/Career Track
- March 31, Comfort Suites, New Braunfels
- Cost: \$149
- For more information, visit [www.careertrack.com](http://www.careertrack.com)

### Dealing with Difficult People

- Sponsored by Fred Pryor Seminars/Career Track
- April 1, Embassy Suites Hotel Northwest
- Cost: \$149
- For more information, visit [www.careertrack.com](http://www.careertrack.com)

### The 7 Habits of Highly Effective People® for Managers

- Sponsored by American Management Association
- April 8-9, TBD, Houston
- Cost: \$1,895
- For more information, visit [www.amanet.org](http://www.amanet.org) ❖

# Ward Systems

WE WANT TO BE YOUR *FIRST CHOICE* FOR HVAC PARTS AND SERVICE!  
COME VISIT OUR NEW PARTS DEPARTMENT!!

**Direct Digital & Pneumatic Controls:**

- Siebe
- Barber Colman
- Robert Shaw
- Johnson Controls
- Honeywell
- Kele
- A. C. I.
- Mamac Systems
- KMC Controls – Kreuter
- Belimo
- Delta
- Erie
- Invensys

**Klein Tools:**

- Hand Tools
- Wipes/Hand Cleaner
- Gloves
- Knives

**Air Compressors/Driers:**

- Curtis Toledo
- Hankison
- Filters
- Oil

**Valves:**

- Zone Control Valves
- Butterfly Valves
- Ball Valves
- Globe Valves
- Packing Kits

**Actuators:**

- Damper Actuators
- Valve Actuators
- Pneumatic Actuators
- Direct Couple Actuators

**Thermostats:**

- Pneumatic (Direct/Reverse)
- Electric
- Electronic
- Programmable
- Calibration Kits

**Humidity Transmitters:**

- Wall Mount
- Duct Mount

**CO<sub>2</sub> Sensors:**

- Wall Mount
- Duct Mount

**Variable Frequency Drives:**

- Square D Drives
- Graham/Danfoss

**Wire:**

- Plenum Cable
- Cable Ties

We offer **ENGINEERING** and **TECHNICAL SUPPORT** as well as  
**INSTALLATION SERVICE** for all products sold!!

**BARBER  
COLMAN**

**KLEIN TOOLS**

**DELTA  
CONTROLS**

**JOHNSON  
CONTROLS**

Ward Systems & Services, Inc.

2121 Cee Gee

San Antonio, Texas 78217

Phone: (210) 824-7683

Fax: (210) 824-2123

Mobile: (210) 825-2011

[www.wardsystems.us](http://www.wardsystems.us)

**Erie**

**BELIMO**

**KMC  
CONTROLS**

**Honeywell**

## February Lunch Summary

by Curtis Thompson

Good day everyone! I hope each of you enjoyed February's luncheon - I know I did. I'm looking forward to this month's luncheon with CPS Energy. There will be a large turnout for their presentation, so make sure you RSVP.


February's seminar was provided by Louis Giles from Optibelt Corporation. The presentation covered new technology in the V-Belt industry and how it can help with energy efficiency and lower maintenance costs.

Optibelt drive systems can be found in the following sectors: general machine construction, commercial vehicles/general vehicles, agricultural machinery, household and office appliances and even in the building maintenance field (mostly HVAC). The belt products fulfill the appropriate drive requirements, last longer and have a higher heat tolerance than normal V-Belts.

The importance of proper installation and maintenance of belts was covered, and some new state-of-the-art tools that help with alignment and tension were shown.

Thank you to Joe W. Fly Company (Will Fawcett) and Optibelt for putting together such a great seminar and for supporting the members of SAABE! ♦

**ROY C. GARRETT, INC.**

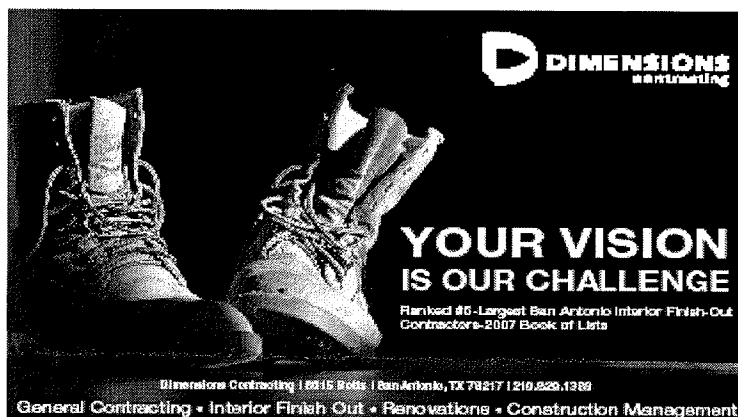


**COOLING TOWER SPECIALISTS**  
TACLA27282E

**Tom Dreher**

Office: (210) 659-6701  
Fax: (210) 658-0627  
tom.dreher@roycgarrett.com

P.O. Box 569  
411 FM 1103  
Cibolo, TX 78108



**DIMENSIONS**  
contracting

**YOUR VISION  
IS OUR CHALLENGE**

Ranked #6 - Largest San Antonio Interior Finish-Out Contractors - 2007 Book of Lists

Dimensions Contracting | 10115 Rotts | San Antonio, TX 78217 | 210.520.1389

General Contracting • Interior Finish-Out • Renovations • Construction Management

You can EXPECT MORE from Chamberlin!



The benefit of working with a company like ours is that you get MORE.

**MORE services.**

**MORE expertise.**

**MORE experience.**

**MORE solutions.**

**MORE stability.**

**MORE for your money.**

210.822.6536 • chamberlinltd.com

San Antonio • Austin • Houston • Dallas • Oklahoma City



**Roofing & Sheet Metal**

**Waterproofing & Caulking**

**Building & Garage Restoration**



## SAABE Says "Goodbye" To Former President Phil Anderson

Long time SAABE member and past president Phil Anderson passed away on Friday, March 5 due to complications from a recent surgery.

Phil was a good man who served our company for many years with honor and distinction. Please keep Phil's family in your thoughts and prayers.

**Randy Mellinger**

**Manager Corporate Service**

**Valero Energy Corporation**

*His obituary:* Phillip R. Anderson, age 56, has joined his family and Our Lord Jesus Christ in heaven on March 5, 2010. Phillip is now reunited with his dad, James W. Anderson, Sr.; mother, Martha Jane and brother, James Jr.. He is survived by his sister, Anita; daughter, Margaret Jane Foster; son-in-law, Patrick Foster; granddaughter, Riven Isabella and Phillips's fiancée, Grace Stewart. Phillip served in the Air Force (1970s) and after that dedicated himself to the construction industry. Following that, he worked for Diamond Shamrock, which then led into his career at Valero Energy (13 plus years). He had also taught evening classes at Texas A&M Extension College. He wanted all to know that he is at a "Better Address" now and will be watching over us. Instead of flowers, please make a donation to Migdahl Ohr Orphanage c/o John Hagee Ministries, San Antonio TX. Service will be held in Bryan-College Station at a later date. ❖

**George Worth**  
**Pump & Motor Service**

SPECIALIZING IN REPAIR AND INSTALLATION OF  
PUMPS AND MOTORS

GEORGE WORTH, REPAIR SPECIALIST

PHONE: 210.248.4241      22144 HIGHWAY 46 WEST  
FAX: 830.980.8515      SPRING BRANCH, TEXAS 78070  
EMAIL: GWWORTH@AOL.COM

## Engineer Spotlight (continued)

- **Interesting stories from your years in the business?**

Some time ago, I got a call from the UTSA campus police who reported that an animal that looked like a mountain lion had attacked a couple of deer on campus. Being the dedicated employee, I went to investigate the situation. Having found the mauled deer and realizing that if it was some sort of wild cat that had attacked them, I was not prepared in the event it decided to attack me; I turned the call back over to the campus police because they have guns – all I had was a hammer. ❖

**When Power Goes Out...**  
**Ensure You Have Reliable Backup Gensets Fast!**  
**Sales • Service • Rental**



- Rental Gensets
- Rental Chillers
- Standby Gensets
- Service & Maintenance

**HOLT** **CAT**  
POWER SYSTEMS

www.holtcat.com

Tom Tarbox Over 600 kW 210-648-8874	Jason Tarbox Rental Power 210-648-8947	Ed Moseley 8 kW to 600 kW 210-648-8407	Rita Munoz Service & Maintenance 210-648-8356
---	--	--	---



# Gerloff Company Inc

## C A T A S T R O P H E M A N A G E M E N T

### Emergency Preparedness Plan

Gerloff's Emergency Preparedness Plan is designed to provide the highest quality and the best catastrophe management service possible. With your assistance, Gerloff Co Inc. will create a proactive format to facilitate a positive outcome from any unfortunate event of any size or magnitude. The more prepared for any event, the better the results.

Gerloff has been assisting our Texas clients and the insurance community since 1985 in the restoration of Commercial and School Properties affected by water, hurricane, fire, and wind emergencies. These properties, referred to as Emergency Preparedness Plan Partners have experienced a sense of confidence and piece of mind knowing that Gerloff can be contacted to do the right job, the first time.

### Benefits: Emergency Preparedness Plan Partners

- § Priority response for Emergency Preparedness Plan Partners
- § No survey or catalog fees
- § Emergency staff on call, prepared to respond 24/7
- § Designed to work along side any existing contingency plans.
- § EPP Partners are provided with a catalog for at-a-glance location reference
- § Minimizing of business down time while reducing size of loss.
- § Providing turn-key restoration and reconstruction services
- § Eliminating lengthy bidding process by pre-approval with our partner and the insurance carrier.

### TIP: Emergency Preparedness Kit

- Pack a Flashlight with back up batteries
- Pack a Transistor Radio with back up batteries
- Pack bottled water
- Pack Cell Phone
- Pack personal hygiene supplies
- Pack a manual can opener
- Pack a first aid kit

**For Any Questions or to Set Up Your Inspection Contact Drew VanWyck at Our Main Office  
14955 Bulverde Rd.  
San Antonio, TX 78247  
(210) 490-2777**

# We're Making It Easier To GO GREEN!



## **PAVECON Ltd. Is Pushing GREEN**

Pavecon is big on recycling jobs, whether for a patch repair or a total recycle job. Pavecon has taken the challenge to help our environment in every way possible. One way is by becoming one of the leading recycling companies of asphalt and concrete in the Southwest, and by extending that commitment to our customers.

Pavecon grinds up the old asphalt and existing soil and then remixing it with Portland cement. The end product is a strong, long-lasting base, with a new asphalt surface to support various types of traffic.

Other by-products are also used, resulting in less haul-off or land fill refuse. Many times, excess material is reused on-site or moved to other sites to be used as base material on other Pavecon jobs. Concrete is another material that gets reused in Pavecon's "Go Green" approach. Concrete that has been removed from the job is taken to specified crushers where the material is crushed into a usable base material.

Pavecon is always thinking of our environment. When asphalt paving repair jobs are specified to be removed, Pavecon makes sure the old asphalt goes back to asphalt manufacturers to be recycled into new asphalt mix called "RAP". Remember, it is our planet, and we all need to work to keep it "GREEN."

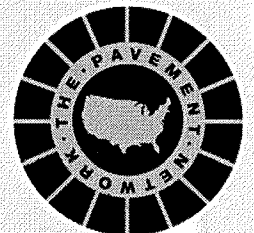
**Call David Harding Today 210.669.3639 (cell) or  
210.798.1111 (office) or e-mail him at davidh@pavecon.com**

**The Experts In Repairing Existing Concrete and Asphalt Paving**

# PAVECON®

**DALLAS • FT. WORTH • HOUSTON • AUSTIN • SAN ANTONIO**

*Pavecon is a member of*



## LEED EB - O&M April Seminar - "Energy Efficiency Goes Up = Utility Costs Go Down"

Join us for the April session of the ongoing LEED Existing Buildings – Operations and Maintenance series (LEED EB - O&M) "Energy Efficiency Goes Up = Utility Costs Go Down." At this seminar, you will learn, from managers and engineers that have "walked the walk" and "talked the talk," practical and efficient ways to reduce energy consumption on your property (i.e., involving occupants to help lower energy consumption, improving building operating strategies, installing equipment upgrades, using alternative energy sources, etc.).

Paul Dockery with Chemsearch will provide an overview on the LEED EB – O&M Energy section to help you prepare for the future, since the green movement is here to stay. Bob Nelson with CPS Energy will update you on their rebate programs and alternative energy sources. And, additional speakers will teach you how to baseline your energy usage using the Energy Star Portfolio Manager and how to track your progress in this area.

The seminar will be held at the SAWS Conference Center (281/Mulberry) on Tuesday, April 27 from 12:00 p.m. to 4:00 p.m. Lunch will be at 11:30 a.m. The cost for the seminar and lunch is \$35 (cash or check). To RSVP, contact Tom Lasater at 771-5824. ♦


**ADVANCED  
DOOR CONTROL**

*Automatic Door Sales and Services*


**"Specializing in:  
servicing and installing  
automatic  
swinging/sliding/revolving doors"**  
*same day – 24 hour service*

**[www.advanceddoorcontrol.com](http://www.advanceddoorcontrol.com)**  
**(210)341-1084 fax: (210)344-1079**

**ADVANCED  
DOOR CONTROL**



**TD Industries**



Austin • Dallas • Fort Worth  
Houston • Phoenix • San Antonio

### LIFECYCLE SOLUTIONS FOR SUCCESSFUL BUILDINGS:

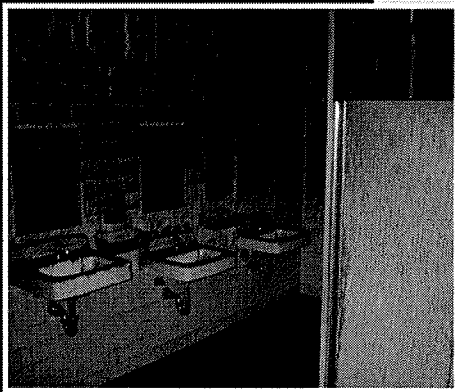
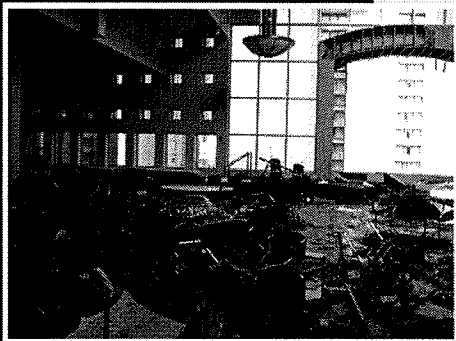
- New Construction
- Design Build
- Renovation/Upgrade
- Building Commissioning
- 24 Hour Service
- Facilities Management
- Preventive Maintenance

### SYSTEMS:

- Mechanical
- Electrical
- Plumbing
- Process Piping
- Refrigeration
- Building Integration Systems

210 656 5511 voice  
210 656 3613 fax  
[www.tdindustries.com](http://www.tdindustries.com)

# RESPONSE SERVICE AGREEMENT



## Be Proactive. Be Prepared.

Is your company prepared should a disaster strike?  
Will you be *action* oriented or *reaction* oriented?

Last-minute decisions in the face of a disaster are almost certain to increase both the time and the cost of recovery. Disaster planning offers you the opportunity to make calm, well-considered decisions prior to a critical event. Plans will vary widely from one organization to another. Let Blackmon Mooring assist with prioritizing your company's needs.

Establishing your company and facilities as a Priority Customer with a Response Service Agreement can give you peace of mind that should a disaster strike, Blackmon Mooring will be there to assist in reducing business interruption and mitigating costs.

### Response Service Agreement benefits:

- No cost or contractual obligation
- 24/7/365 Emergency Response
- Priority Response in the event of a community-wide disaster
- Pre-registration of your facility's "vital statistics" for customized, more efficient disaster response
- Priority Response Consultant and Project Coordinator assigned to personally manage your account

#### Melissa Sloan

Priority Response Consultant  
Blackmon Mooring of San Antonio

210.249.1496 cell

210.619.8542 desk

817.334.3554 fax

msloan@blackmonmooring.com

**1.877.730.1948**  
www.blackmonmooring.com

## What Is Identity Theft?

According to the FTC, identity theft occurs when someone uses your personally identifying information, like your name, Social Security number, or credit card number, without your permission, to commit fraud or other crimes. The FTC estimates that as many as 9 million Americans have their identities stolen each year.

The crime takes many forms. Identity thieves may rent an apartment, obtain a credit card, or establish a telephone account in your name. You may not find out about the theft until you review your credit report or a credit card statement and notice charges you didn't make—or until you're contacted by a debt collector.

Identity theft is serious. While some identity theft victims can resolve their problems quickly, others spend hundreds of dollars and many days repairing damage to their good name and credit record. Some consumers victimized by identity theft may lose out on job opportunities, or be denied loans for education, housing or cars because of negative information on their credit reports. In rare cases, they may even be arrested for crimes they did not commit.

Identity theft starts with the misuse of your personally identifying information. For identity thieves, this information is as good as gold. Skilled identity thieves may use a variety of methods to get hold of your information, including:

- **Dumpster Diving.** They rummage through trash looking for bills or other paper with your personal information on it.
- **Skimming.** They steal credit/debit card numbers by using a special storage device when processing your card.
- **Phishing.** They pretend to be financial institutions or companies and send spam or pop-up messages to get you to reveal your personal information.
- **Changing Your Address.** They divert your billing statements to another location by completing a change of address form.
- **Old-Fashioned Stealing.** They steal wallets and purses; mail, including bank and credit card statements; pre-approved credit offers; and new checks or tax information. They steal personnel records, or bribe employees who have access.
- **Pretexting.** They use false pretenses to obtain your personal information from financial institutions, telephone companies, and other sources.

For more information, visit <http://www.ftc.gov/bcp/edu/microsites/idtheft/> ❖

## Meeting RSVPs

The staff at Embassy Suites has been very accommodating to our growing group. SAABE must call in a meal count on the Monday prior to the meeting, so that's why we've been stressing the importance of RSVPs and timely cancellations. We **MUST** receive your RSVP no later than the **Monday prior to the meeting at noon**.

If you RSVP and do not attend, you could receive a no-show invoice. If you must cancel your attendance, please call Melodie Goff at 408-8135 by the **Monday prior to the meeting at noon** so we can cancel your meal. Cancellations received after this time could still be invoiced.

While we appreciate your call on Wednesday morning that you cannot attend, you could still be billed for the meal, since Embassy Suites has already prepared it for you.

If you have any questions, please feel free to call Laura Bray (408-1699) or any board member. ❖

## Lunch Policy for Vendor Members

A few reminders about SAABE's policies for lunches for vendor members:

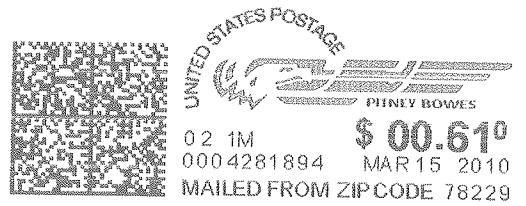
- Lunch cost for SAABE vendor (associate) members is \$20. (Guests are \$25.)
- You may bring an additional person from your company to two SAABE meetings as a guest. After that, the additional representative must purchase a SAABE membership to continue to attend. SAABE memberships are by individual, not by company.
- You may substitute an attendee if your primary representative cannot attend.

SAABE values the support and contributions of its vendor members, and we have several vendors who support SAABE with multiple memberships and frequent participation.

**Please contact Laura Bray, SAABE Association Manager, if you have any questions about SAABE's policies and procedures.** ❖



SAABE  
 PO Box 780785  
 San Antonio, TX 78278



02 1M \$ 00.61<sup>0</sup>  
 0004281894 MAR 15 2010  
 MAILED FROM ZIP CODE 78229

Charles Mikolajczyk Jr  
 Endeavor Real Estate Group  
 8000 IH 10 W, Suite 250  
 San Antonio, TX 78230

<p><b>SAABE TIMES</b> <b>March Issue</b></p>	<p><b>Final Thought:</b>  <i>"Security is always excessive until it's not enough." - Robbie Sinclair</i></p> <p style="text-align: center;">     </p>
--	---

<b>2010 Board of Directors</b>	
Charles Mikolajczyk, Jr., CBE-M President	341-0828
Mike Halvorsen, CBE-M 1st Vice President	669-3929
JR Uresti 2nd Vice Pres./SABOMA Representative	496-7400
Curtis Thompson Secretary	349-3324
Michael Copp Treasurer	308-9888
Allen Mangrum Vendor Representative	601-4248
John Leifester Education Director	771-7081
Kendal Langenberg Membership Chair	967-8766
Bob Beal Past President	830-868-4749
<hr/>	
Laura Bray Association Manager (laurabray@braycommunications.com)	408-1699

**Next Meeting:**  
**Wednesday, March 17**  
**"CPS Energy's 2010 Commercial Rebate Program"**  
**Sponsored by CPS Energy**

**Upcoming Program:**  
**Wednesday, April 21**  
**TBD**  
**Sponsored by Western States Fire Protection Company**

---

The SAABE Times is edited by Bray Communications.