

**Mouse Anti-Melanoma/gp100/PMEL17/SILV [HMB45]: MC0190, MC0190RTU7**

**Intended Use:** For Research Use Only

**Description:** Metastatic melanoma is often confused with a variety of poorly differentiated carcinomas, sarcomas, and large cell lymphomas. Clone HMB45 reacts with fetal and neonatal melanocytes but not with normal adult melanocytes, junctional nevus cells but not with intradermal nevi, hence showing specificity for detection of melanocytic tumors. The panel of tumor markers, most commonly used in conjunction with HMB45, for evaluation of melanoma includes S-100 protein LCA, CEA, and EMA, as well as vimentin, an intermediate filament found in both melanomas and sarcomas.

**Specifications**

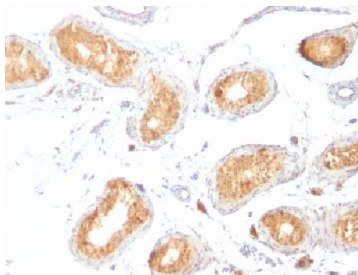
Clone:	HMB45
Source:	Mouse
Isotype:	IgG1k
Reactivity:	Human
Immunogen:	Extract of pigmented melanoma metastases from lymph nodes
Localization:	Cytoplasm
Formulation:	Antibody in PBS pH7.4, containing BSA and $\leq 0.09\%$ sodium azide (NaN <sub>3</sub> )
Storage:	Store at 2°- 8°C
Applications:	IHC, Flow Cyt., ICC/IF, WB
Package:	

Description	Catalog No.	Size
Melanoma/gp100/PMEL17/SILV Concentrated	MC0190	1 ml
Melanoma/gp100/PMEL17/SILV Prediluted	MC0190RTU7	7 ml

**IHC Procedure\***

Positive Control Tissue:	Melanoma
Concentrated Dilution:	50-200
Pretreatment:	Tris EDTA pH9.0, 15 minutes using Pressure Cooker, or 30-60 minutes using water bath at 95°-99°C
Incubation Time and Temp:	30-60 minutes @ RT
Detection:	Refer to the detection system manual

\* Result should be confirmed by an established diagnostic procedure.



FFPE human testis stained with anti-HMB45 using DAB

**References:**

1. Hepatic epithelioid angiomyolipoma is a rare and potentially severe but treatable tumor: A report of three cases and review of the literature. Liu W, et al. *Oncol Lett* 11:3669-3675, 2016.
2. Surgical monotherapy may be a suitable therapeutic strategy for advanced collecting (Bellini) duct carcinoma: A case report and literature review. Zhu L et al. *Exp Ther Med* 12:1181-1184, 2016.
3. STX13 regulates cargo delivery from recycling endosomes during melanosome biogenesis. Jani RA, et al. *J Cell Sci* 128:3263-76, 2015.
4. Punctate LC3B expression is a common feature of solid tumors and associated with proliferation, metastasis, and poor outcome. Lazova R, et al. *Clin Cancer Res* 18:370-9, 2012.