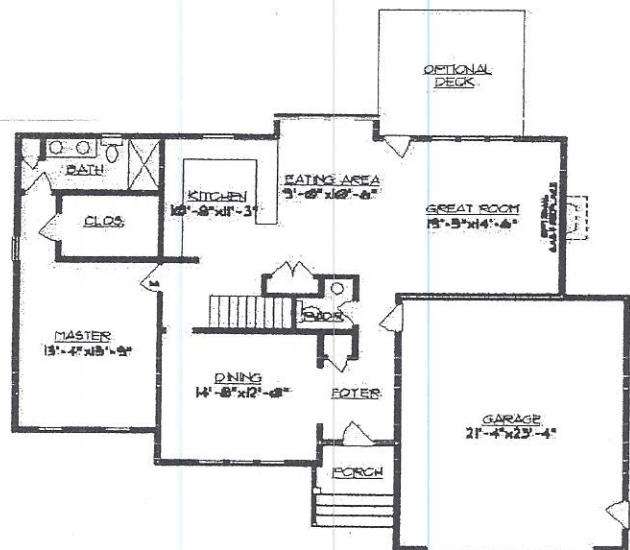


SECOND FLOOR PLAN

1227 SQ. FT. (HEATED)
 BONUS ROOM 173 SQ. FT. (HEATED)



FIRST FLOOR PLAN

1322 SQ. FT. (HEATED)
 528 SQ. FT. (GARAGE)

Quality Built By:
PATRICK CONSTRUCTION CO.
 Please Note: Some items may be optional
 and are available at additional cost.
 Prices, plans and standard features subject
 to change without notice. Room sizes
 shown are approximate.

Designed By:
TURNER DESIGNS LLC
 1811 Huguenot Road
 Suite 205
 Mechanicsville, VA 23113
 (804) 375-3471