

Featuring Homes Built By:



Craftsman Series



Typical Elevation

Construction

Detachable Hitch
Recessed Frame
2 X 6 Floor Joists 16" OC
19/32" T&G OSB Decking
2 X 6 Exterior Walls, 16" o.c.
2x4 Interior Walls 24" o.c.
8'0" Sidewall Height w/ Flat Ceiling
30# Roof Load
Nominal 4:12*Roof Pitch (3:12 on 30'W)
Double Marriage Wall Construction
Concealed Ridgebeam
R-28 Ceiling Insulation
R-22 Floor Insulation
R-19 Wall Insulation
Chesterfield Dormer with front door accent
Front - 6" Eaves (Nominal)
Rear - 6" Eaves (Nominal)
In Floor Heat Duct Crossover

Baths

2 Piece 60" Tub/Shower in both Baths
Satin Nickel Towel & Tissue Holders
36" Lavy Height- Master Bath / 32" in Guest Bath
Elongated Toilets in both baths
Bath Vent Fans w/ Lights in both baths
Vanity Mirror
Single Lever Faucets T/O
China sink in Both Baths
Satin Nickel 2 Bulb Lights in Baths

Exterior

Architectural Shingles
PlyCem Panel Vertical Siding with Housewrap
Exterior Window Trim
Full End Wall Close-up
8" (nominal) Eave Fascia
Wood Soffit & Facia
Front Door- 36" Fiberglass w/ Peep
Rear Door - 32" Fiberglass w/Peep
Vinyl Low-E Insulated Windows

Interior

Floor Registers Only
Skip Troweled Ceiling Finish
FLAT Interior Paint
1/2" T&T w/rounded Corners T/O
Wire Ventilated Closet Shelving
2 Panel White Interior Doors
356 Door Moulding
356 Window Moulding
356 Base Moulding – Lino Areas
Linoleum in Wet Areas
Lino in Entry
Simply Stated Carpet
3/8" 5# Rebond Pad
Metal Mini-blinds T/O
Valance Treatment Living Areas and MBR

Kitchen

18 CF Refrigerator
Deluxe Electric Range
30" Range Hood w/Fan and Light
Bank of Drawers in Kitchen
Adjustable Overhead Shelves
Laminate Countertop & Laminate Edging
4" Laminate Backsplash--Kit. and Baths
Stainless Steel Kitchen Sink
Single Lever Faucet w/Sprayer
Raised Panel "Courtyard Birch" MDF Cabinets
Cabinet Over Refer
Crown Molding over Kitchen Cabinets
Metal Drawer Guides

Electrical

200 AMP Panel Box
Satin Nickel Ceiling Lights
Prep for Washer/Dryer-ELEC
Shelf Over Washer / Dryer
Toggle Light Switches
Main Water Shut Off Valve
Water Shut-off Valves on Toilets
Black Porch Light- Front & Rear
Furnace - Standard Electric
30 Gallon Elec Water Heater
Exterior GFI Receptacle
Prep For Paddle Fan In Living Room

Effective: 1/1/17
Revised: 1/11/17

Featuring Homes Built By:



Weiser, ID

Craftsman Series

MODEL 17-5422C

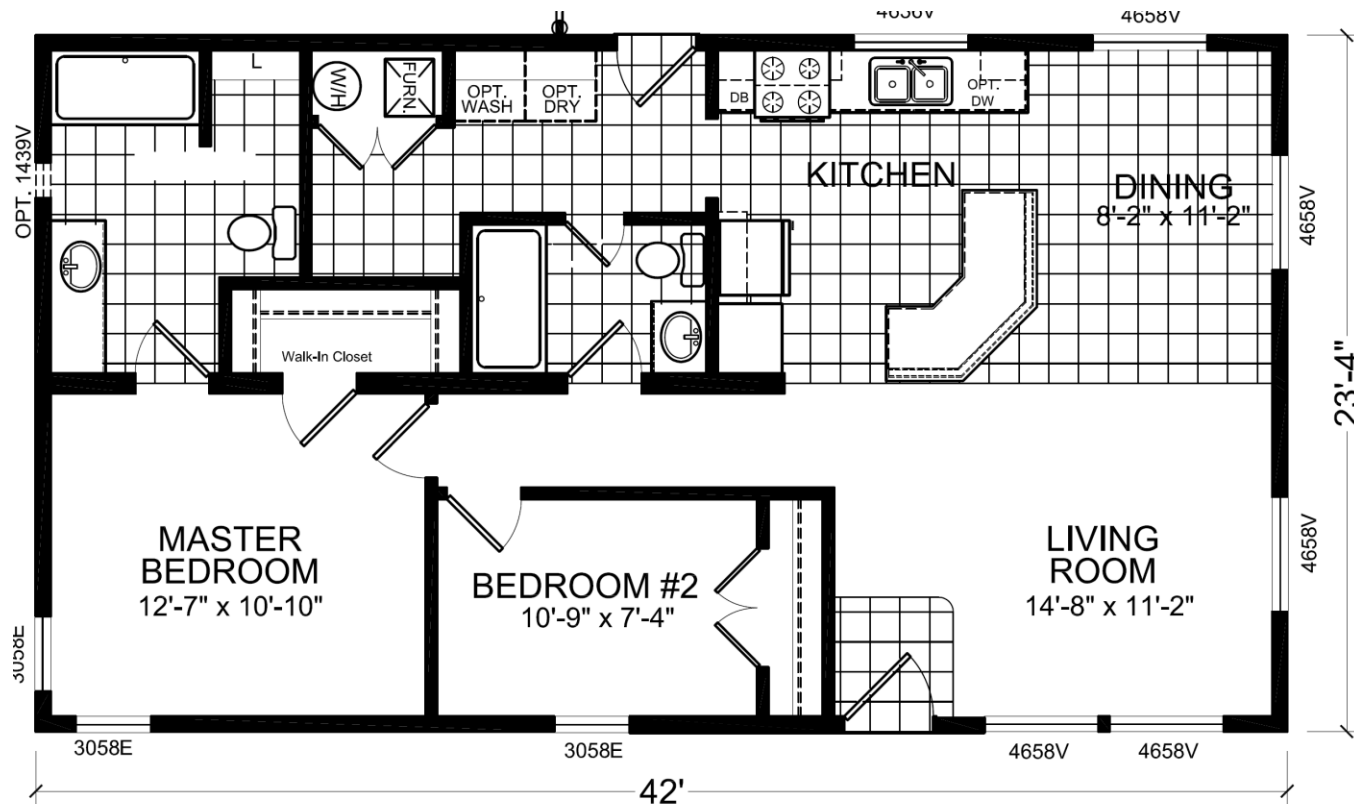
2 BEDROOM, 2 BATH

ACTUAL SIZE: 42' X 23'4"

TOTAL AREA: 980 SQ. FT.

CHAMPION®

MANUFACTURED BEAUTIFULLY™



Due to continuous product development and improvement, prices, specifications and materials are subject to change without notice or obligation. Square footage and other dimensions are approximate. Images such as rendering, photos and floor plans may be shown with optional features and/or third-party additions that may not be available in all regions.

Featuring Homes Built By:



Weiser, ID

Craftsman Series

MODEL 17-5482C

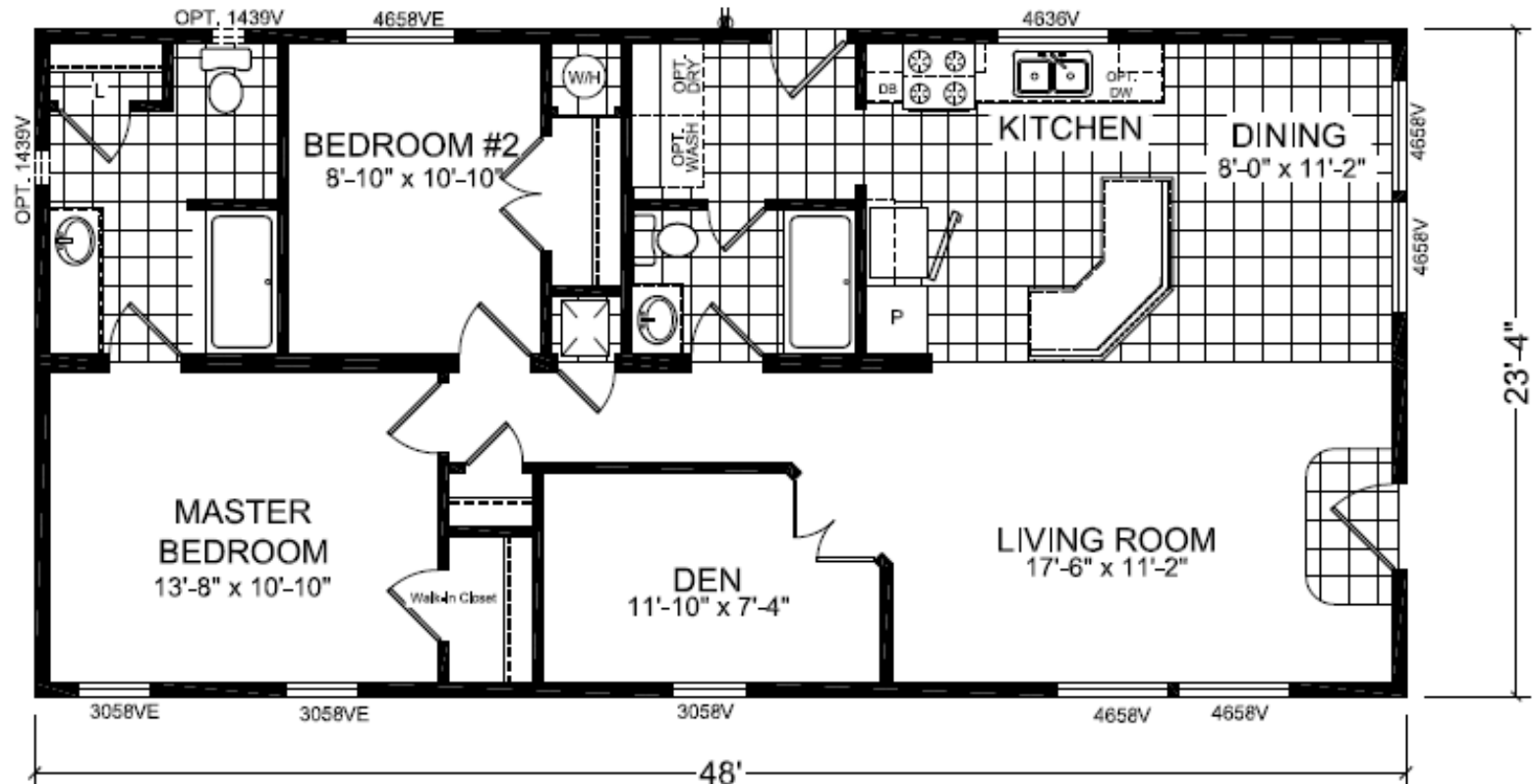
2 BEDROOM, 2 BATH

ACTUAL SIZE: 48' X 23'4"

TOTAL AREA: 1,119 SQ. FT.

CHAMPION®

MANUFACTURED BEAUTIFULLY™



Due to continuous product development and improvement, prices, specifications and materials are subject to change without notice or obligation. Square footage and other dimensions are approximate. Images such as rendering, photos and floor plans may be shown with optional features and/or third-party additions that may not be available in all regions.

Featuring Homes Built By:



Weiser, ID

Craftsman Series

MODEL 17-4443C

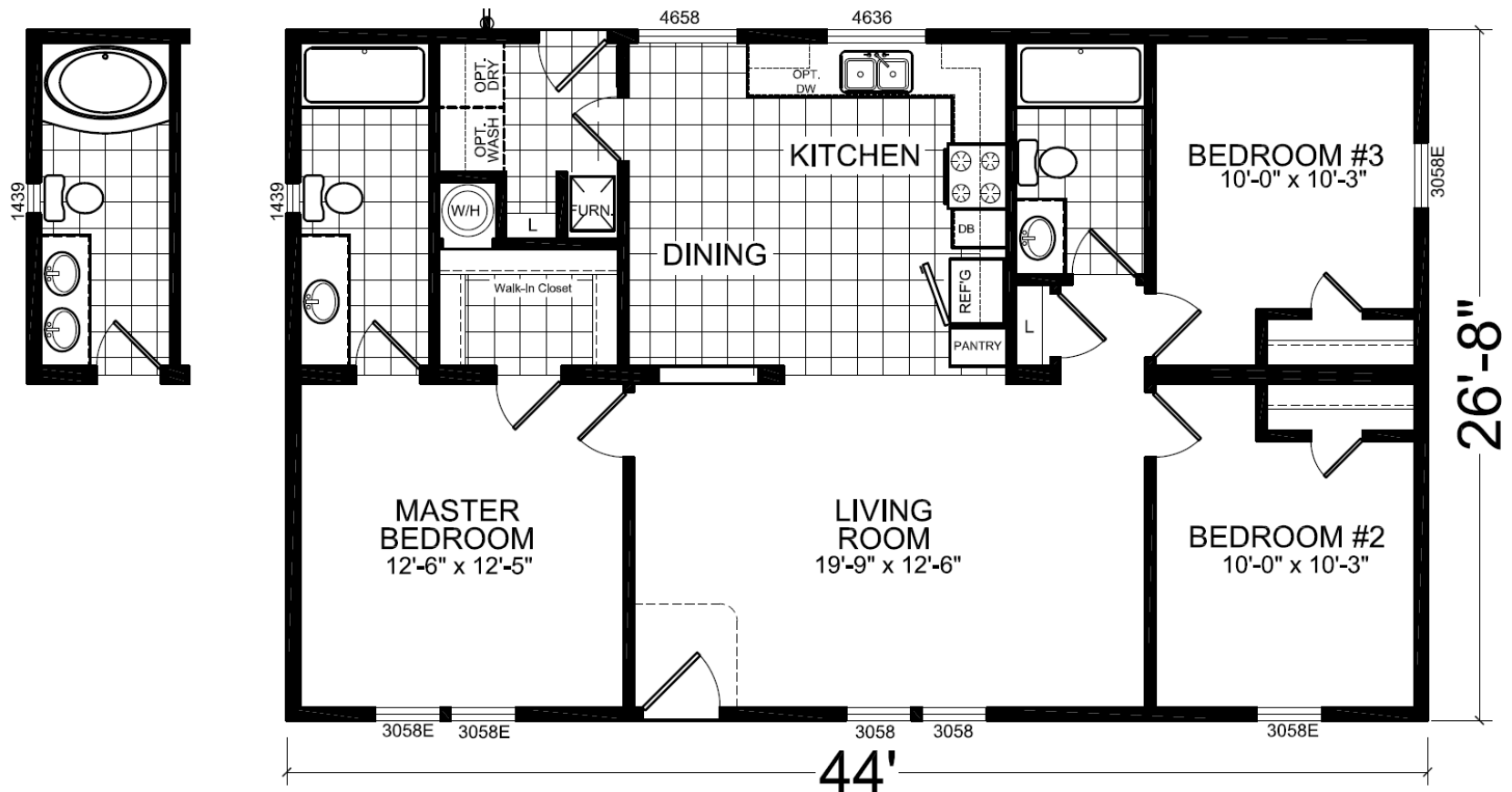
3 BEDROOM, 2 BATH

ACTUAL SIZE: 44' X 26'8"

TOTAL AREA: 1,173 SQ. FT.

CHAMPION®

MANUFACTURED BEAUTIFULLY™



Due to continuous product development and improvement, prices, specifications and materials are subject to change without notice or obligation. Square footage and other dimensions are approximate. Images such as rendering, photos and floor plans may be shown with optional features and/or third-party additions that may not be available in all regions.

Featuring Homes Built By:



Weiser, ID

Craftsman Series

MODEL 17-4483C

3 BEDROOM, 2 BATH

ACTUAL SIZE: 48' X 26'8"

TOTAL AREA: 1,280 SQ. FT.

CHAMPION®

MANUFACTURED BEAUTIFULLY™



Due to continuous product development and improvement, prices, specifications and materials are subject to change without notice or obligation. Square footage and other dimensions are approximate. Images such as rendering, photos and floor plans may be shown with optional features and/or third-party additions that may not be available in all regions.

Featuring Homes Built By:



Weiser, ID

Craftsman Series

MODEL 17-4523L

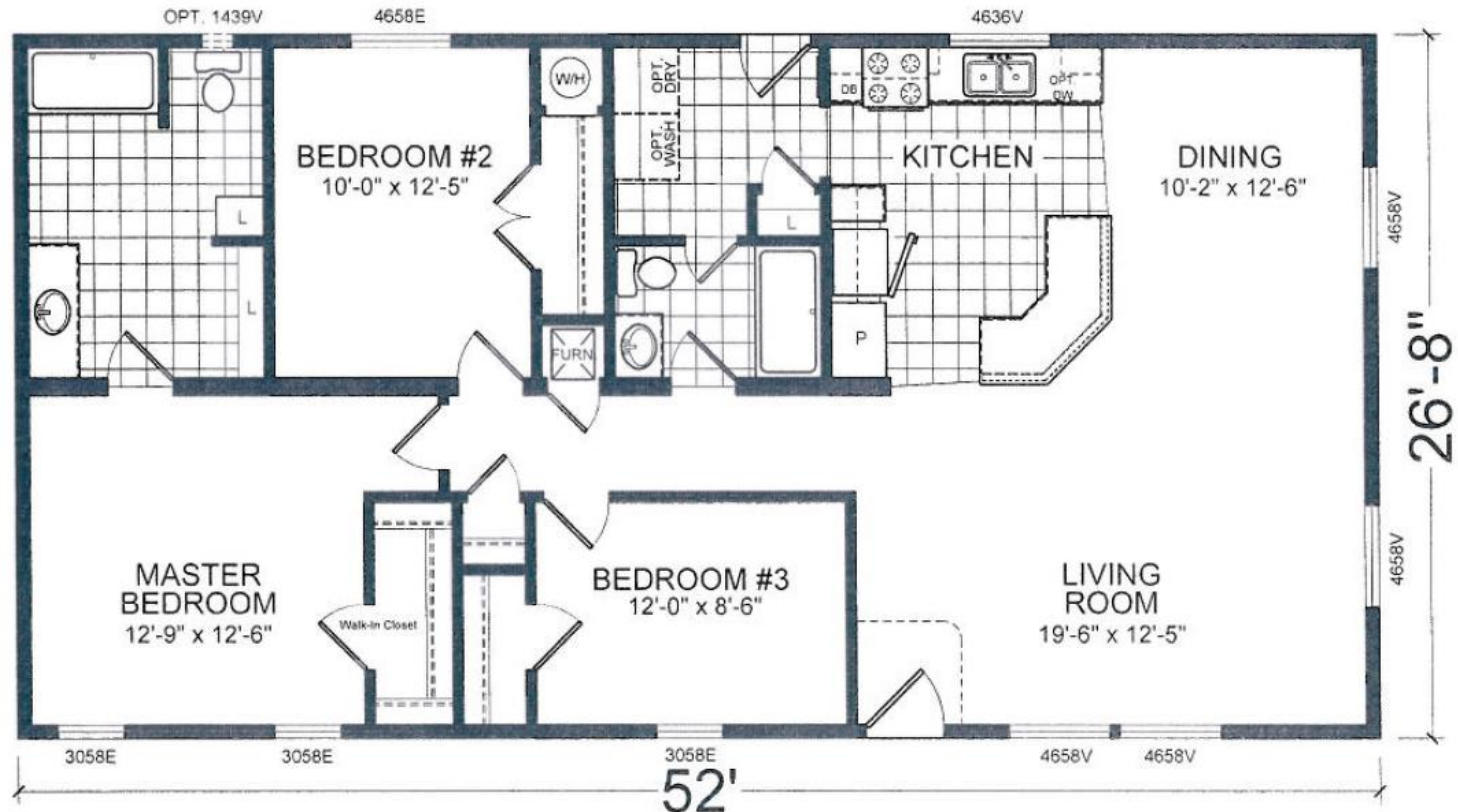
3 BEDROOM, 2 BATH

ACTUAL SIZE: 52' X 26'8"

TOTAL AREA: 1,387 SQ. FT.

CHAMPION®

MANUFACTURED BEAUTIFULLY™



Due to continuous product development and improvement, prices, specifications and materials are subject to change without notice or obligation. Square footage and other dimensions are approximate. Images such as rendering, photos and floor plans may be shown with optional features and/or third-party additions that may not be available in all regions.

Featuring Homes Built By:



Weiser, ID

Craftsman Series

MODEL 17-4523C

3 BEDROOM, 2 BATH

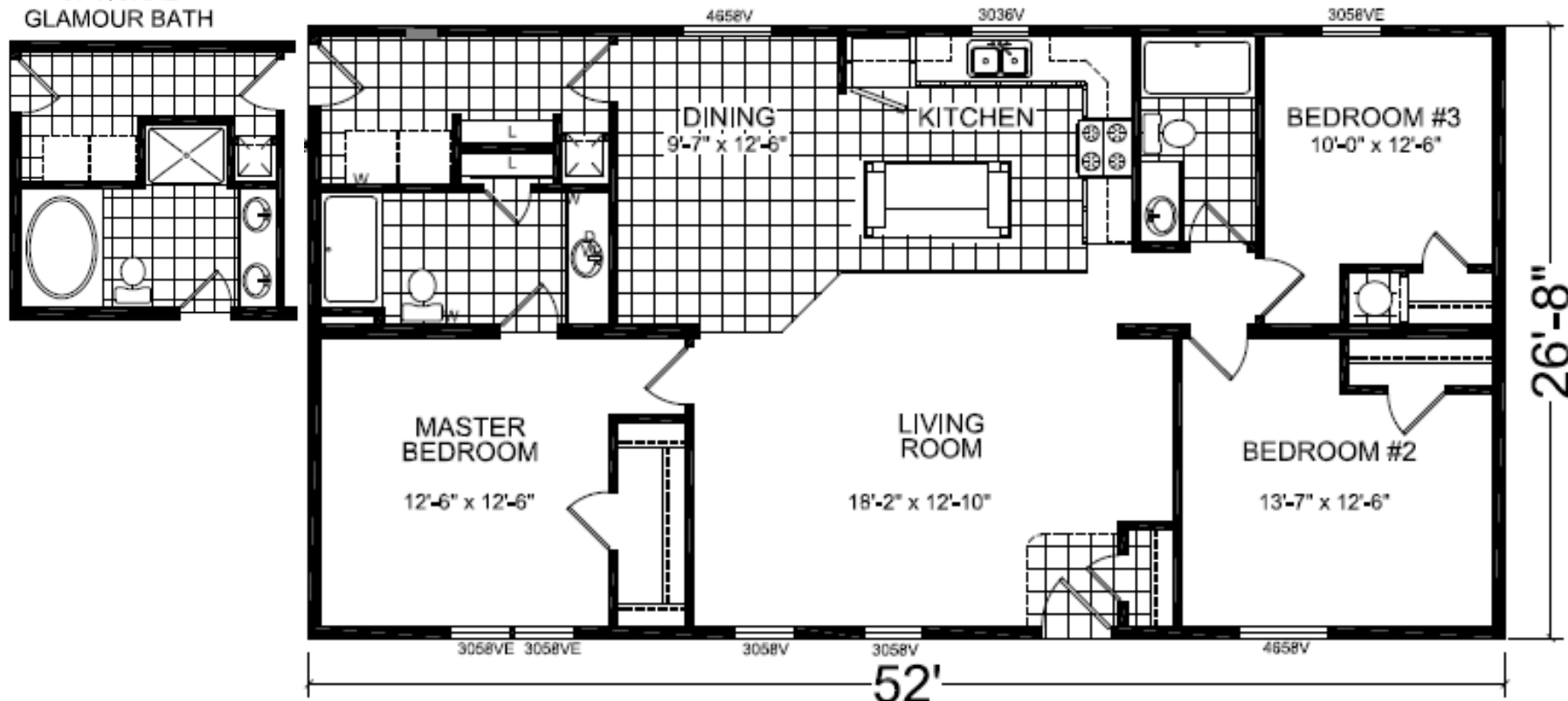
ACTUAL SIZE: 52' X 26'8"

TOTAL AREA: 1,387 SQ. FT.

CHAMPION®

MANUFACTURED BEAUTIFULLY™

OPTIONAL
GLAMOUR BATH



Due to continuous product development and improvement, prices, specifications and materials are subject to change without notice or obligation. Square footage and other dimensions are approximate. Images such as rendering, photos and floor plans may be shown with optional features and/or third-party additions that may not be available in all regions.

Featuring Homes Built By:



Weiser, ID

Craftsman Series

MODEL 17-4563B

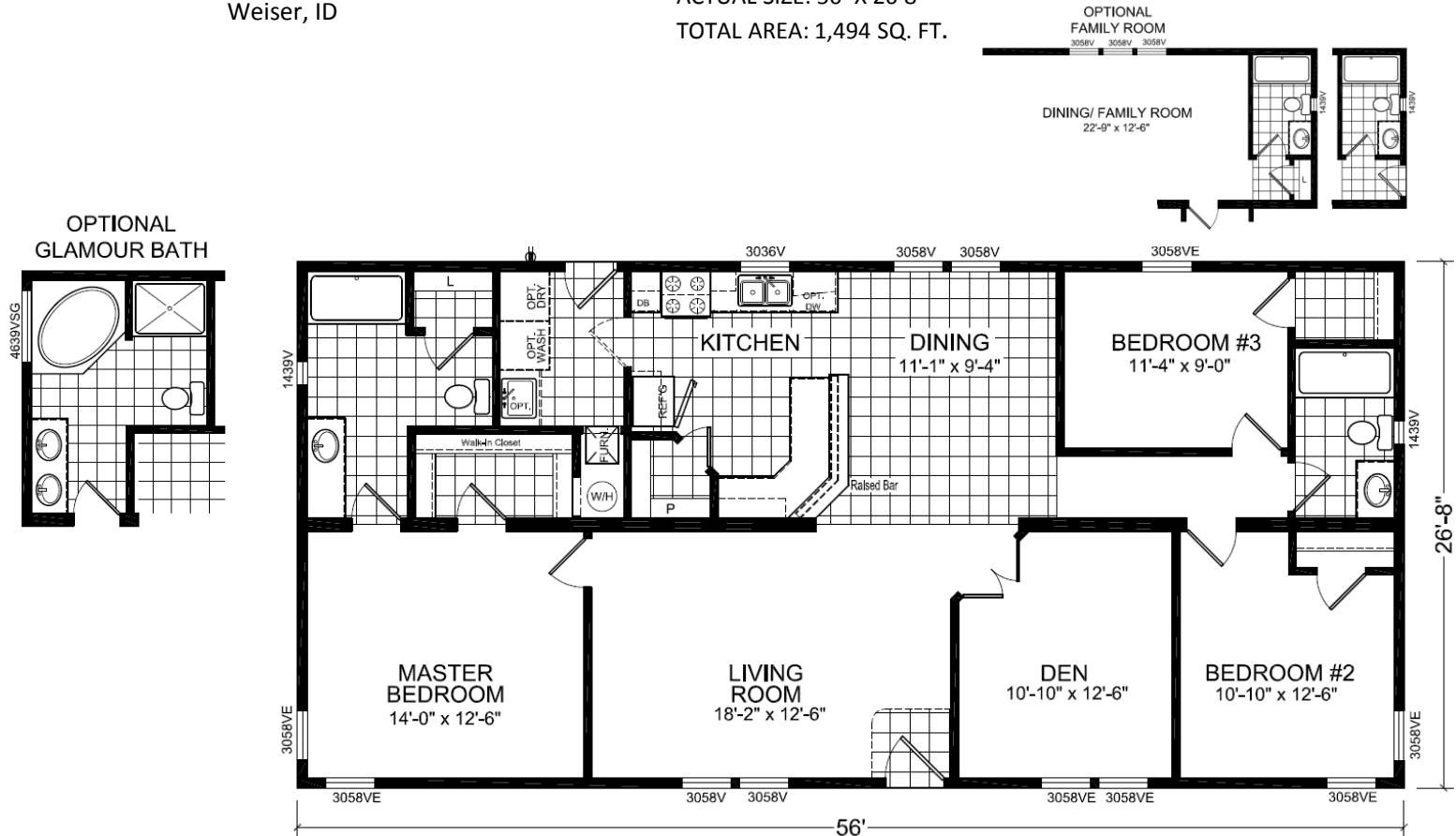
3 BEDROOM, 2 BATH

ACTUAL SIZE: 56' X 26'8"

TOTAL AREA: 1,494 SQ. FT.

CHAMPION®

MANUFACTURED BEAUTIFULLY™



Due to continuous product development and improvement, prices, specifications and materials are subject to change without notice or obligation. Square footage and other dimensions are approximate. Images such as rendering, photos and floor plans may be shown with optional features and/or third-party additions that may not be available in all regions.

Featuring Homes Built By:



Weiser, ID

Craftsman Series

MODEL 17-4563F

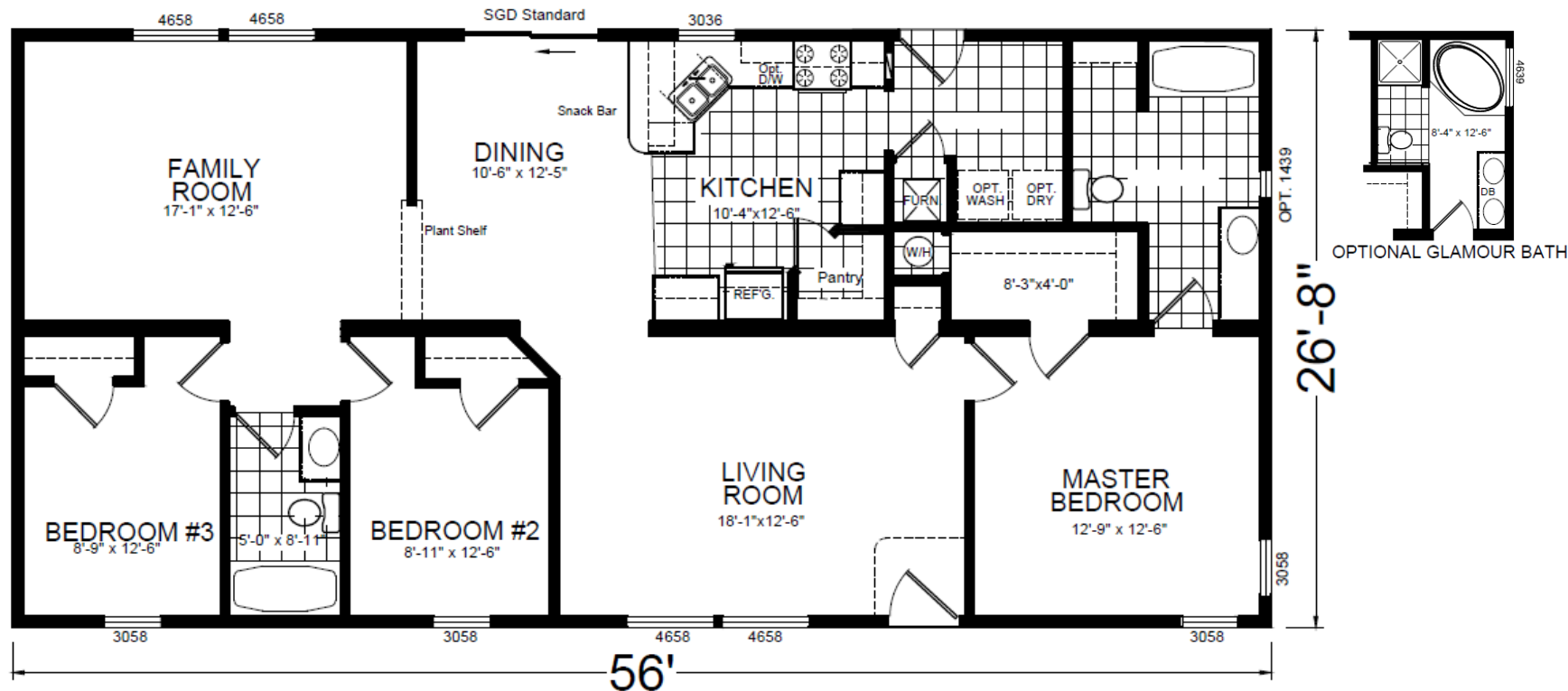
3 BEDROOM, 2 BATH

ACTUAL SIZE: 56' X 26'8"

TOTAL AREA: 1,494 SQ. FT.

CHAMPION®

MANUFACTURED BEAUTIFULLY™



Due to continuous product development and improvement, prices, specifications and materials are subject to change without notice or obligation. Square footage and other dimensions are approximate. Images such as rendering, photos and floor plans may be shown with optional features and/or third-party additions that may not be available in all regions.

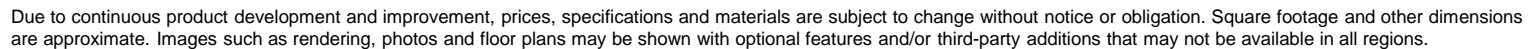


**TITAN[®]
HOMES**

Craftsman Series

TOTAL AREA: 1,760 SQ. FT.

MANUFACTURED BEAUTIFULLY™



Featuring Homes Built By:



Weiser, ID

Craftsman Series

MODEL 17-4764F

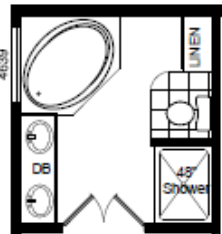
4 BEDROOM, 2 BATH

ACTUAL SIZE: 76' X 26'8"

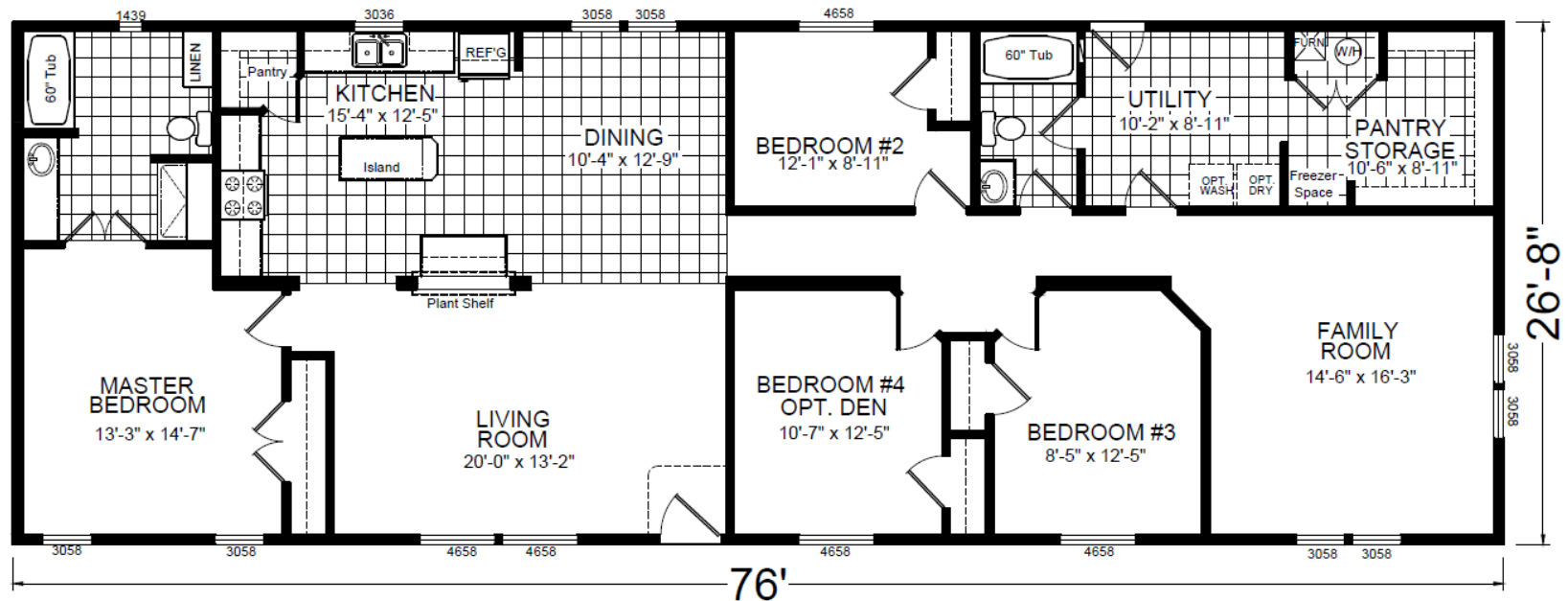
TOTAL AREA: 2,027 SQ. FT.

CHAMPION®

MANUFACTURED BEAUTIFULLY™



OPTIONAL
GLAMOUR
BATH



Due to continuous product development and improvement, prices, specifications and materials are subject to change without notice or obligation. Square footage and other dimensions are approximate. Images such as rendering, photos and floor plans may be shown with optional features and/or third-party additions that may not be available in all regions.

Featuring Homes Built By:



Weiser, ID

Craftsman Series

MODEL 17-6764B

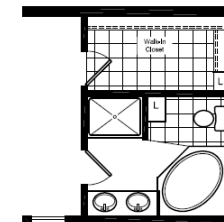
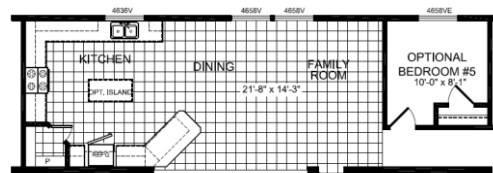
4 BEDROOM, 2 BATH

ACTUAL SIZE: 76' X 30'4"

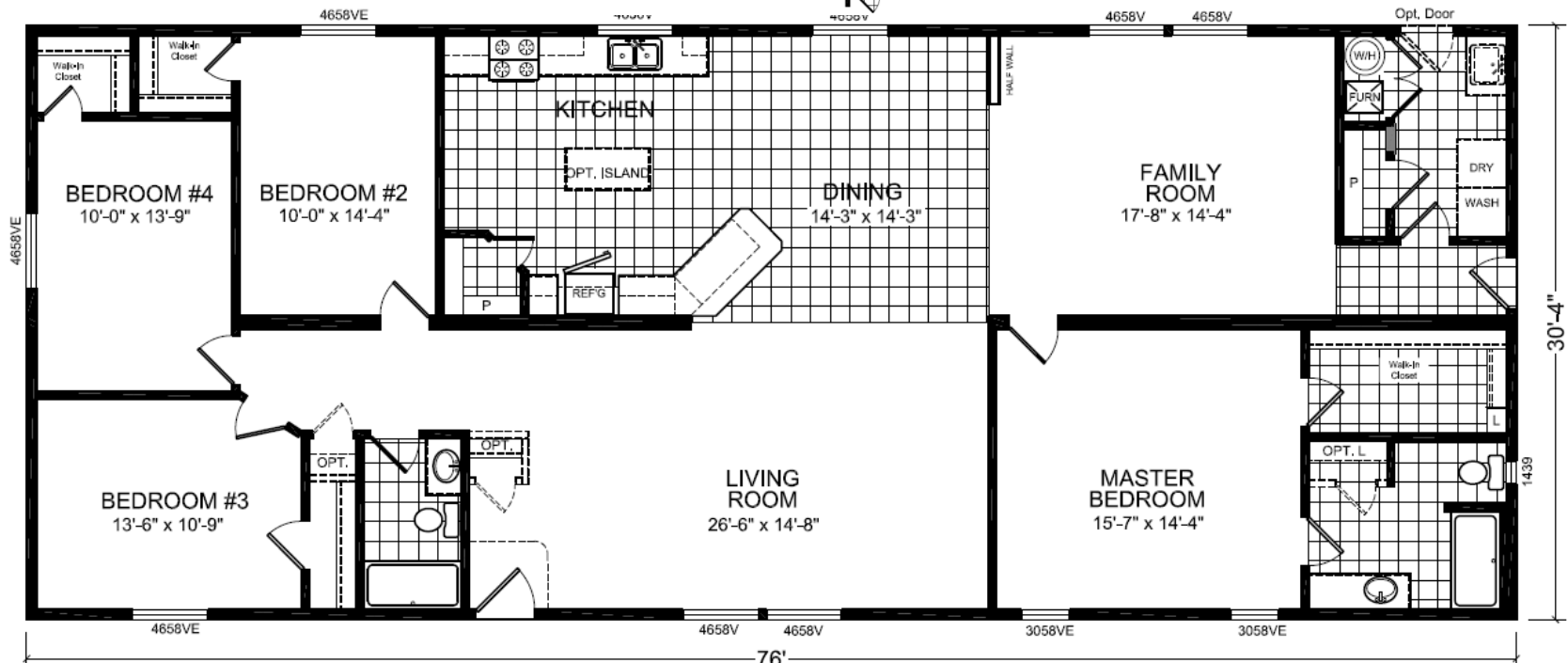
TOTAL AREA: 2,306 SQ. FT.

CHAMPION®

MANUFACTURED BEAUTIFULLY™



OPTIONAL
GLAMOUR
BATH



Due to continuous product development and improvement, prices, specifications and materials are subject to change without notice or obligation. Square footage and other dimensions are approximate. Images such as rendering, photos and floor plans may be shown with optional features and/or third-party additions that may not be available in all regions.