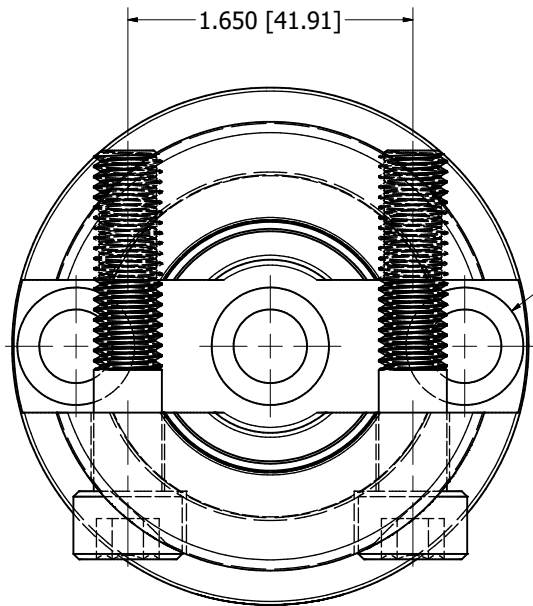
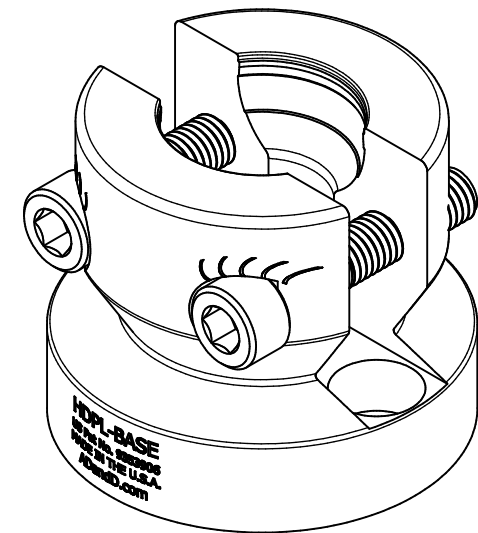


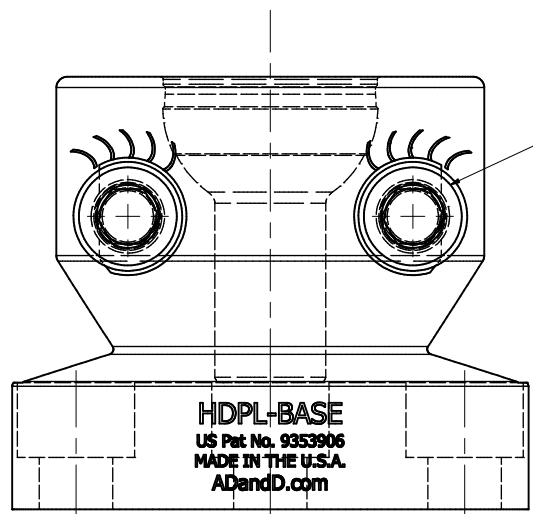
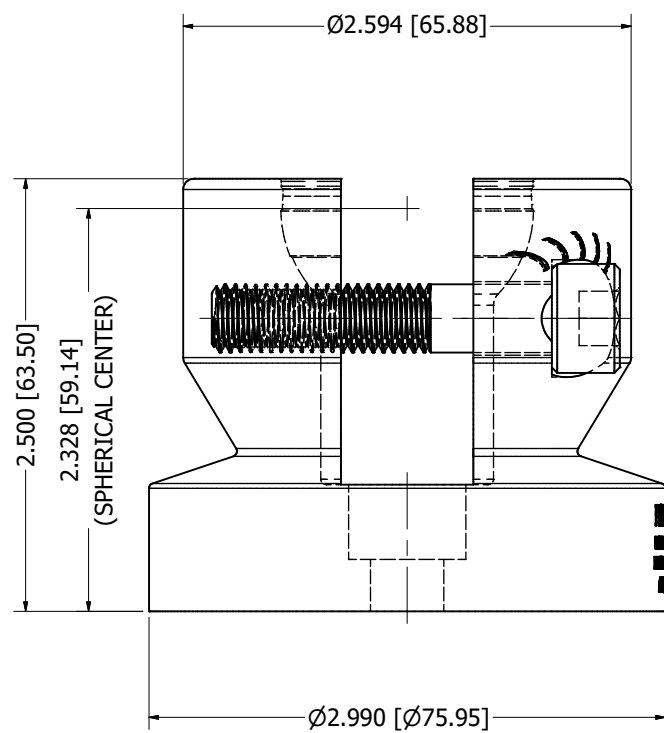
8 7 6 5 4 3 2 1



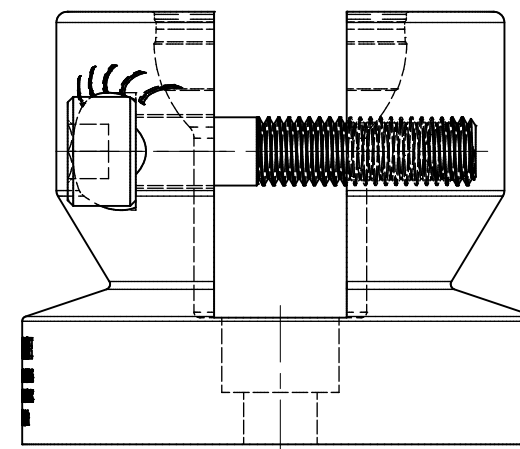
3X C'BORED FOR  
M10 S.H.C.S.



HDPL-BASE  
Part No. 9353906  
MADE IN THE U.S.A.  
ADandD.com



M10x1.5 X 50MM LG  
18-8 STAINLESS STEEL S.H.C.S.  
(2) SUPPLIED



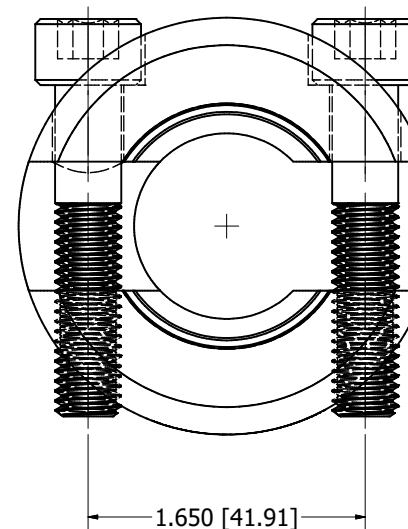
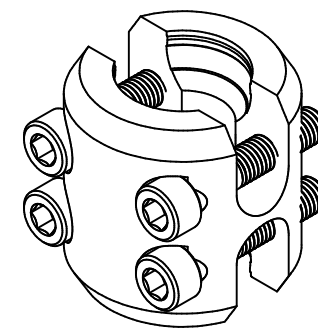
TOTAL ASSEMBLED WEIGHT  
1 lbs. .83 ozs.

8 7 6 5 4 3 2 1

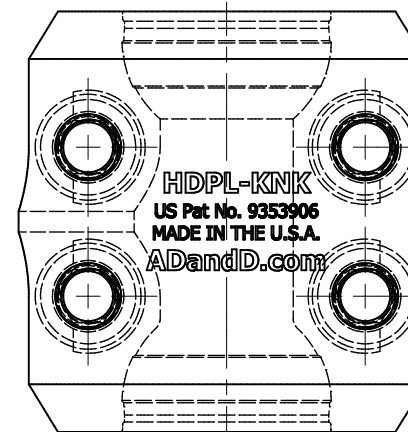
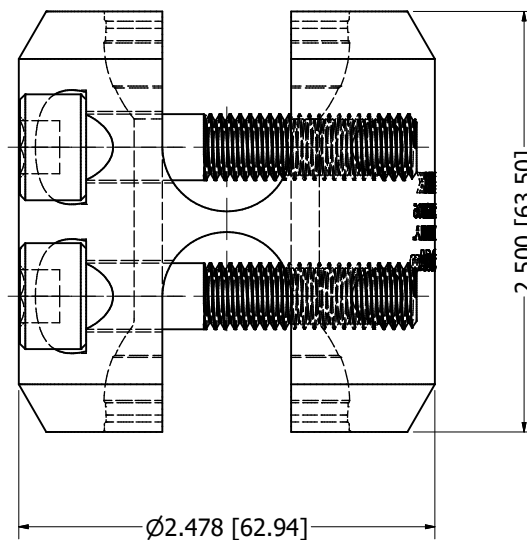
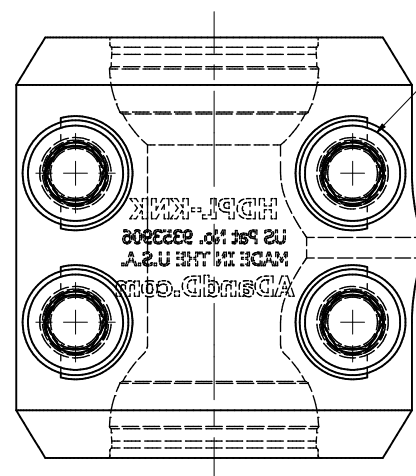
MATERIAL:  
PATENT PENDING  
BREAK ALL SHARP CORNERS  
MARK DETAILS WITH PART No.  
UNLESS OTHERWISE SPECIFIED  
STANDARD TOLERANCE  
UNLESS OTHERWISE SPECIFIED  
2 PLACE DEC. ± .03  
3 PLACE DEC. ± .005  
4 PLACE DEC. ± .0005  
ANGLES ± 1'

REV	DESCRIPTION	DATE	DWN	CHK
REVISIONS				
ADandD.com				
DESCRIPTION				
<b>HDPL-BASE</b>				
SCALE: FULL		DRAWN: BIDDINGER DATE 3/31/17		
SHEET SIZE D		CHECKED: _____ DATE _____		
No. OF SHEETS _____		APPROVED: _____ DATE _____		
SHEET No. _____		PART No. _____		
HDPL-BASE				

8 7 6 5 4 3 2 1



M10x1.5 X 50MM LG  
18-8 STAINLESS STEEL S.H.C.S.  
(4) SUPPLIED



REV	DESCRIPTION	DATE	DWN	CHK



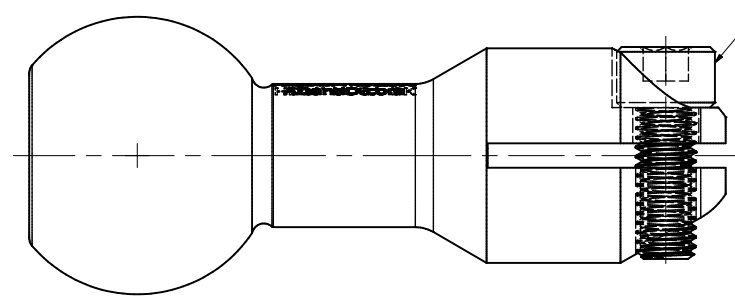
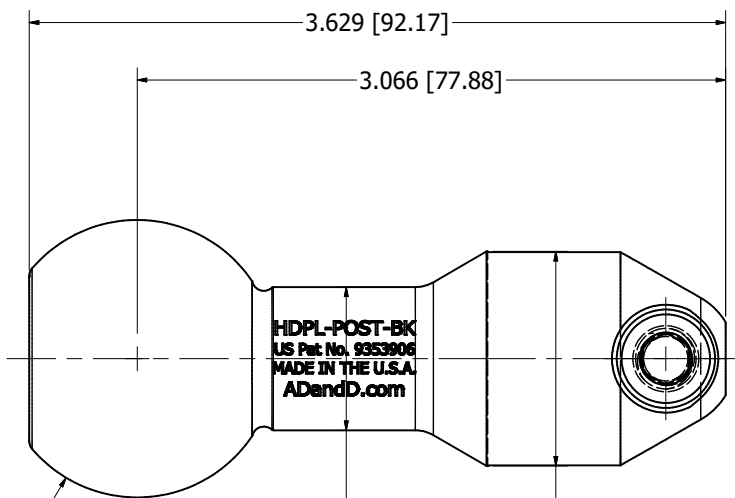
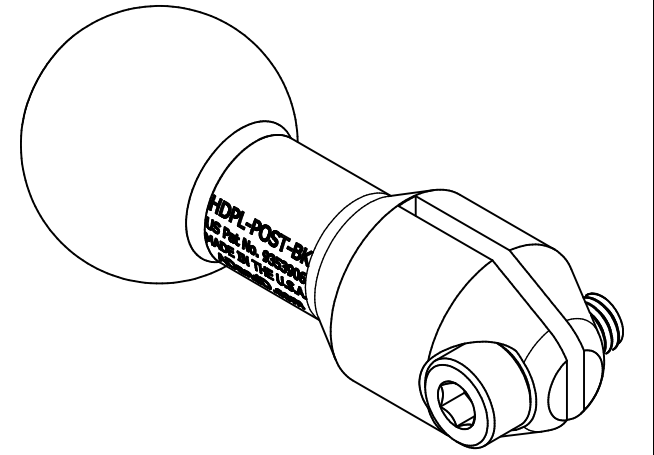
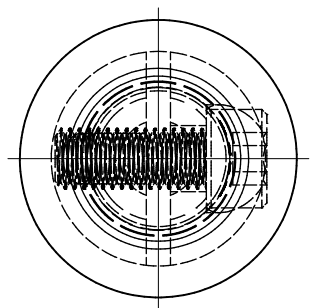
DESCRIPTION  
**HDPL-KNK**

MATERIAL:  
PATENT PENDING  
BREAK ALL SHARP CORNERS  
MARK DETAILS WITH PART No.  
UNLESS OTHERWISE SPECIFIED  
STANDARD TOLERANCE  
UNLESS OTHERWISE SPECIFIED  
2 PLACE DEC. ± .03  
3 PLACE DEC. ± .005  
4 PLACE DEC. ± .0005  
ANGLES ± 1°

SCALE: FULL DRAWN: BIDDINGER DATE 3/31/17  
SHEET SIZE D CHECKED: \_\_\_\_\_ DATE: \_\_\_\_\_  
APPROVED: \_\_\_\_\_ DATE: \_\_\_\_\_  
No. OF SHEETS \_\_\_\_\_ PART No. HDPL-KNK  
SHEET No. \_\_\_\_\_

TOTAL ASSEMBLED WEIGHT  
0 lbs. 14.47 ozs.

8 7 6 5 4 3 2 1



HDPL-POST-BK  
US Pat No. 9353906  
MADE IN THE U.S.A.  
ADandD.com

M8x1.25 X 20MM LG  
18-8 STAINLESS STEEL S.H.C.S.  
(1) SUPPLIED

TOTAL ASSEMBLED WEIGHT  
0 lbs. 4.9 ozs.

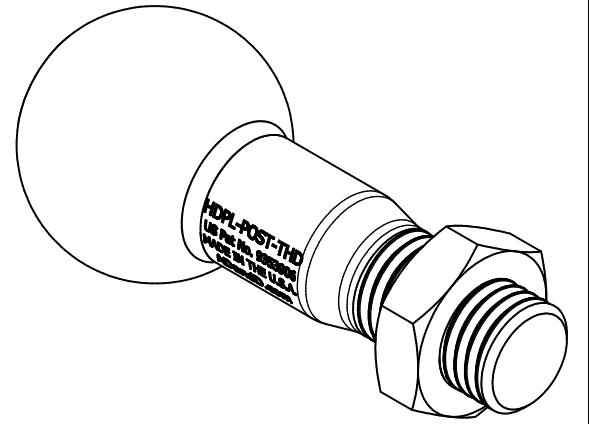
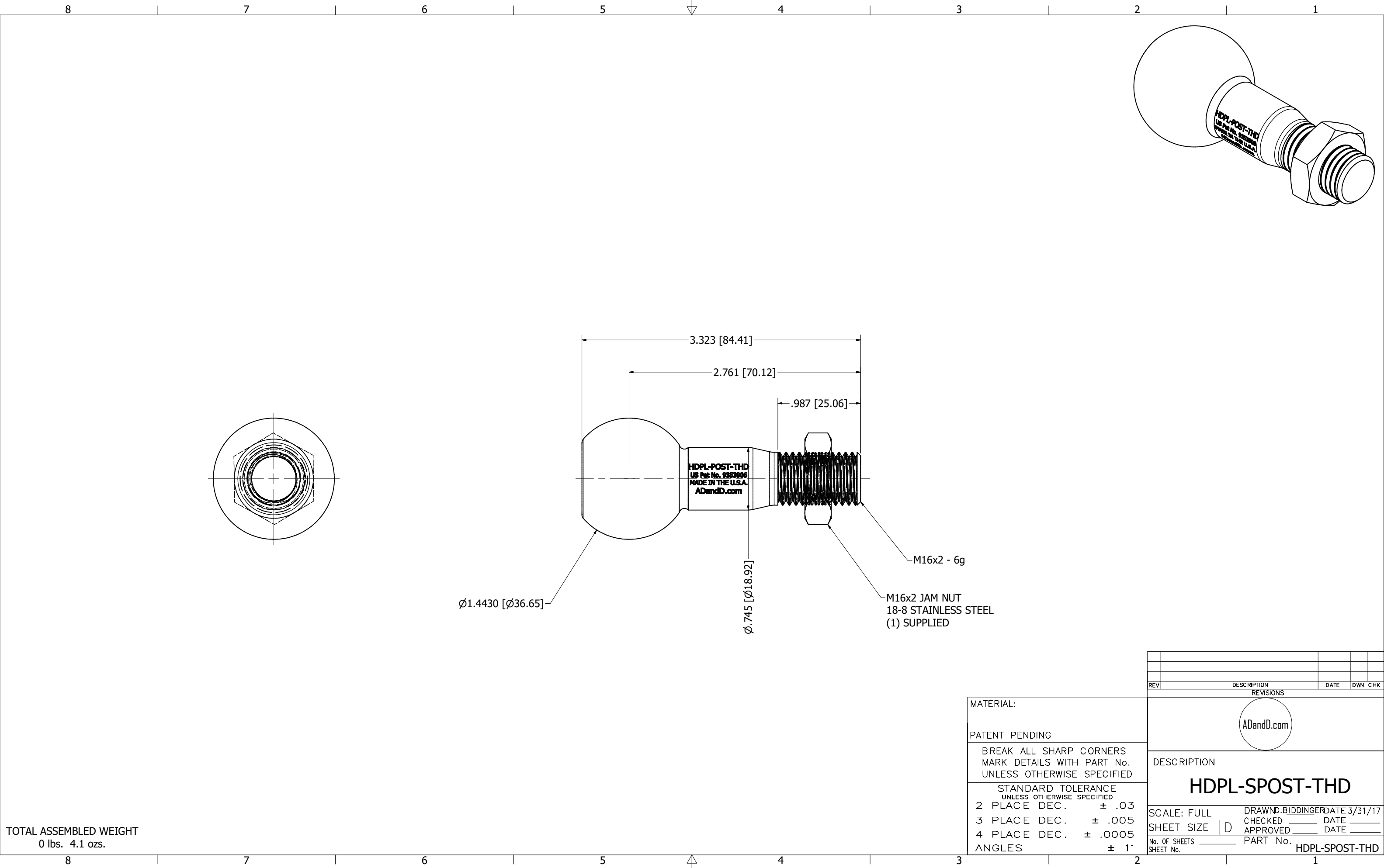
MATERIAL:  
PATENT PENDING  
BREAK ALL SHARP CORNERS  
MARK DETAILS WITH PART No.  
UNLESS OTHERWISE SPECIFIED  
STANDARD TOLERANCE  
UNLESS OTHERWISE SPECIFIED  
2 PLACE DEC. ± .03  
3 PLACE DEC. ± .005  
4 PLACE DEC. ± .0005  
ANGLES ± 1°

REV	DESCRIPTION	DATE	DWN	CHK



DESCRIPTION  
**HDPL-SPOST-BK**

SCALE: FULL DRAWN: BIDDINGER DATE 3/31/17  
SHEET SIZE D CHECKED: DATE  
APPROVED: DATE  
No. OF SHEETS PART No. HDPL-SPOST-BK  
SHEET No.



TOTAL ASSEMBLED WEIGHT  
0 lbs. 4.1 ozs.

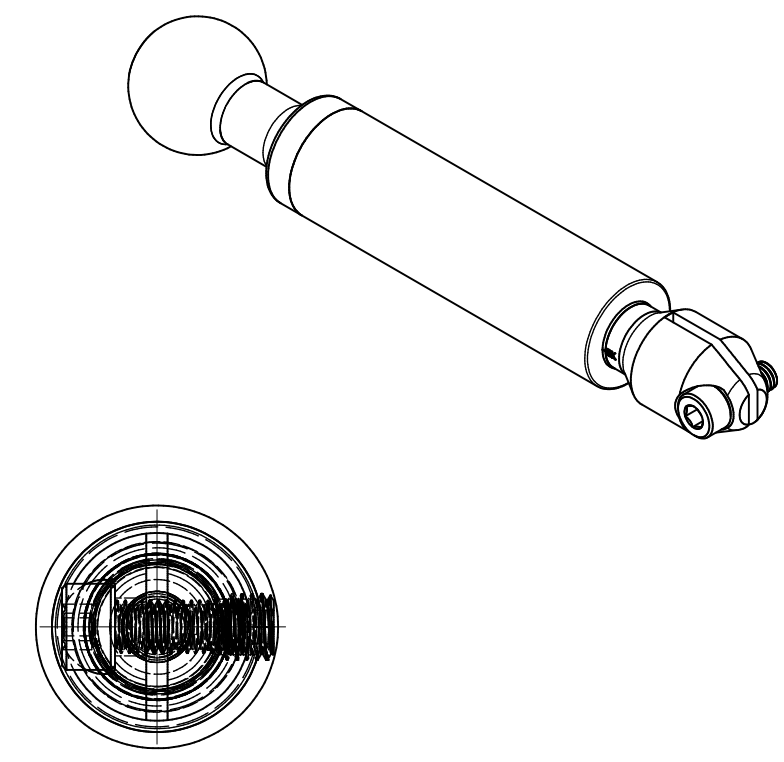
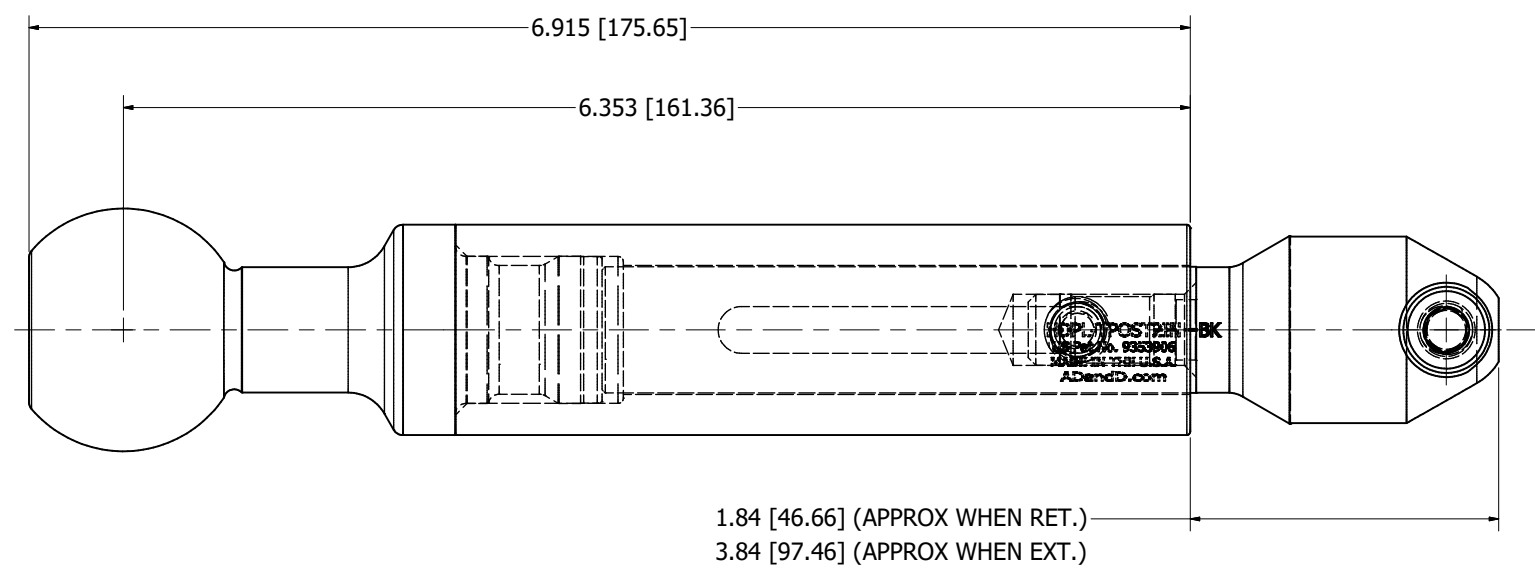
MATERIAL:  
PATENT PENDING  
BREAK ALL SHARP CORNERS  
MARK DETAILS WITH PART No.  
UNLESS OTHERWISE SPECIFIED  
STANDARD TOLERANCE  
UNLESS OTHERWISE SPECIFIED  
2 PLACE DEC.  $\pm .03$   
3 PLACE DEC.  $\pm .005$   
4 PLACE DEC.  $\pm .0005$   
ANGLES  $\pm 1'$

REV	DESCRIPTION	DATE	DWN	CHK

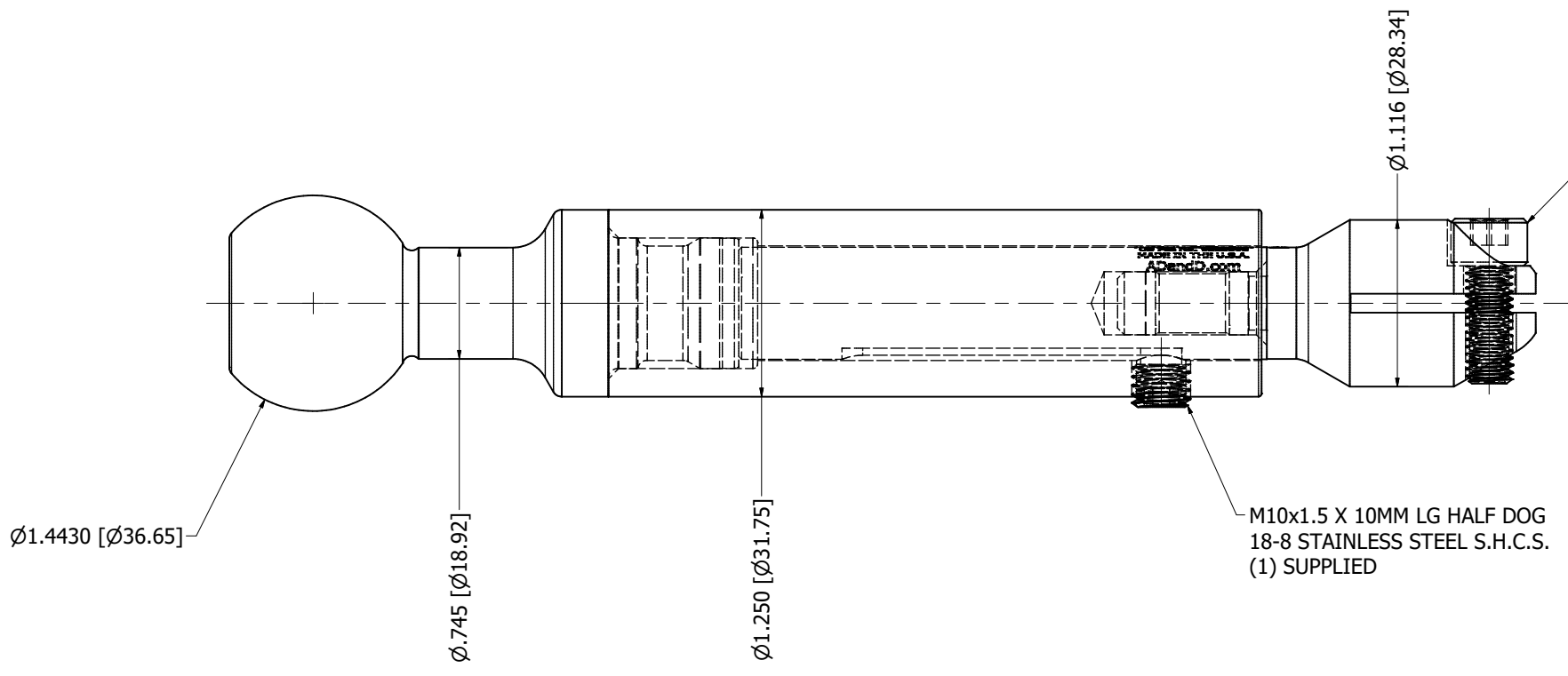


DESCRIPTION  
**HDPL-SPOST-THD**

SCALE: FULL DRAWN: BIDDINGER DATE 3/31/17  
SHEET SIZE D CHECKED: DATE: \_\_\_\_\_  
APPROVED: DATE: \_\_\_\_\_  
No. OF SHEETS PART No. HDPL-SPOST-THD  
SHEET No. \_\_\_\_\_



1.84 [46.66] (APPROX WHEN RET.)  
3.84 [97.46] (APPROX WHEN EXT.)



M8x1.25 X 20MM LG  
18-8 STAINLESS STEEL S.H.C.S.  
(1) SUPPLIED

M10x1.5 X 10MM LG HALF DOG  
18-8 STAINLESS STEEL S.H.C.S.  
(1) SUPPLIED

TOTAL ASSEMBLED WEIGHT  
0 lbs. 13.96 ozs.

MATERIAL:  
PATENT PENDING  
BREAK ALL SHARP CORNERS  
MARK DETAILS WITH PART No.  
UNLESS OTHERWISE SPECIFIED  
STANDARD TOLERANCE  
UNLESS OTHERWISE SPECIFIED  
2 PLACE DEC. ± .03  
3 PLACE DEC. ± .005  
4 PLACE DEC. ± .0005  
ANGLES ± 1'

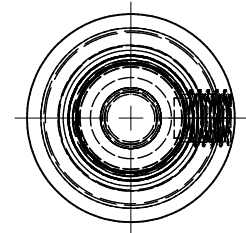
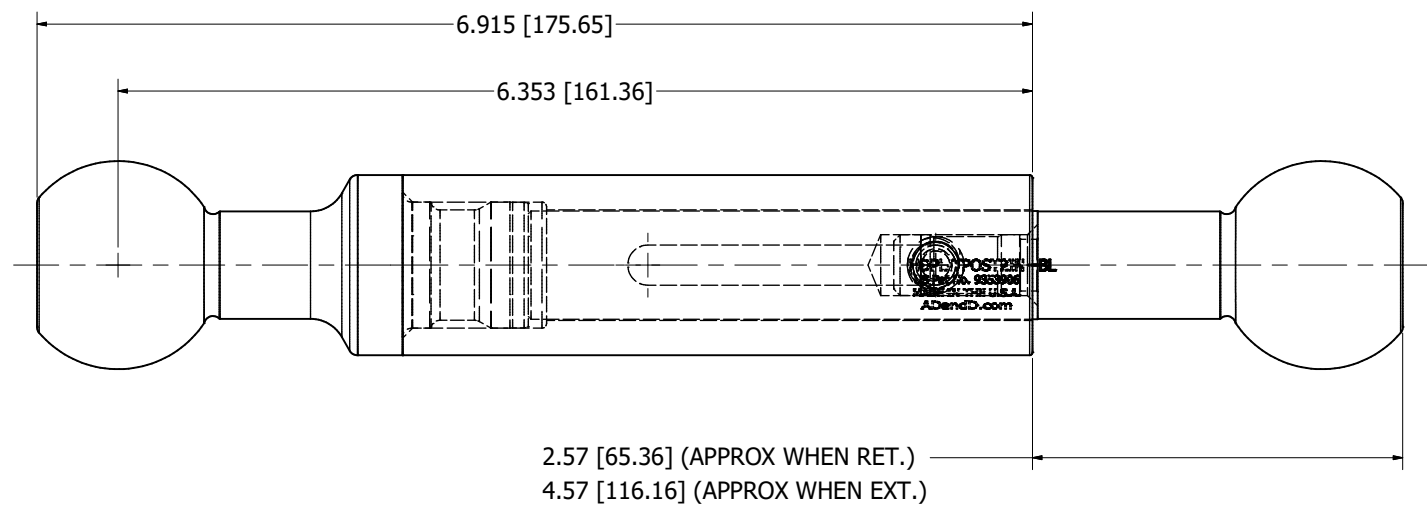
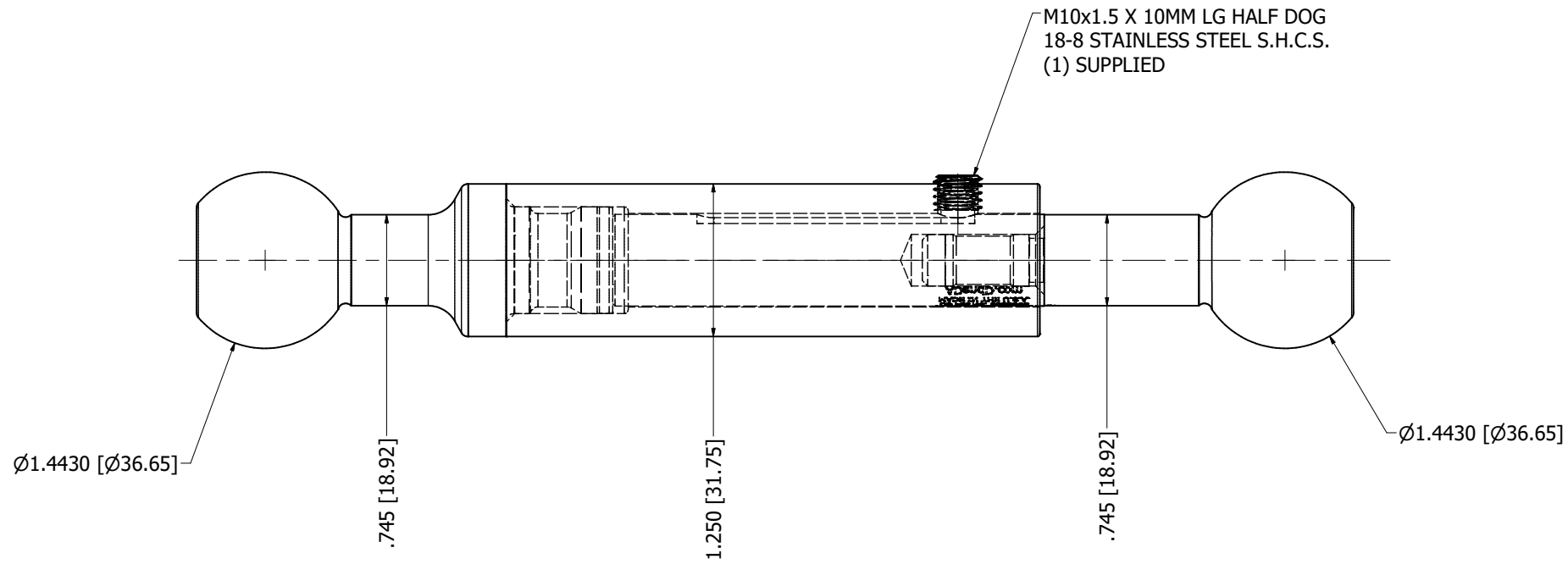
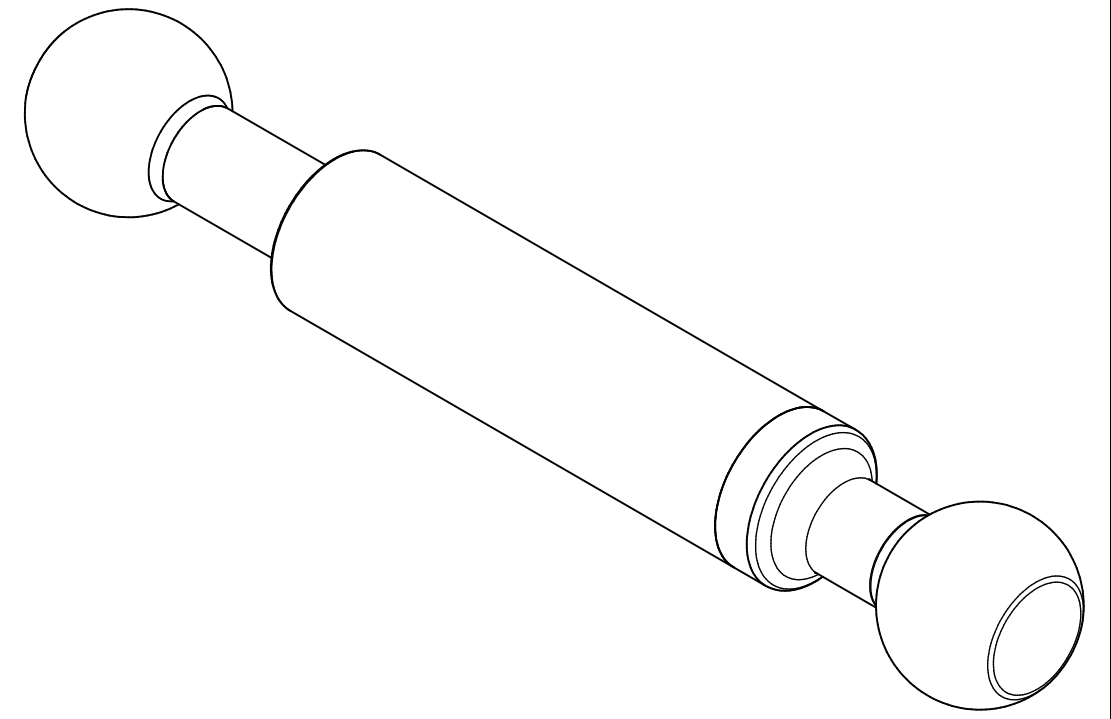
REV	DESCRIPTION	DATE	DWN	CHK



DESCRIPTION  
**HDPL-TPOST2IN-BK**

SCALE: FULL DRAWN: BIDDINGER DATE 3/31/17  
SHEET SIZE D CHECKED: \_\_\_\_\_ DATE: \_\_\_\_\_  
APPROVED: \_\_\_\_\_ DATE: \_\_\_\_\_  
No. OF SHEETS \_\_\_\_\_ PART No. \_\_\_\_\_  
SHEET No. \_\_\_\_\_ HDPL-TPOST2IN-BK

8 7 6 5 4 3 2 1



TOTAL ASSEMBLED WEIGHT  
0 lbs. 15.2 ozs.

MATERIAL:  
PATENT PENDING  
BREAK ALL SHARP CORNERS  
MARK DETAILS WITH PART No.  
UNLESS OTHERWISE SPECIFIED  
STANDARD TOLERANCE  
UNLESS OTHERWISE SPECIFIED  
2 PLACE DEC. ± .03  
3 PLACE DEC. ± .005  
4 PLACE DEC. ± .0005  
ANGLES ± 1'

REV	DESCRIPTION	DATE	DWN	CHK
REVISIONS				
ADandD.com				
DESCRIPTION				
<b>HDPL-TPOST2IN-BL</b>				
SCALE: FULL		DRAWN: BIDDINGER DATE 3/31/17		
SHEET SIZE   D		CHECKED: _____ DATE _____		
No. OF SHEETS _____		APPROVED: _____ DATE _____		
SHEET No. _____		PART No. _____		
HDPL-TPOST2IN-BL				

8 7 6 5 4 3 2 1

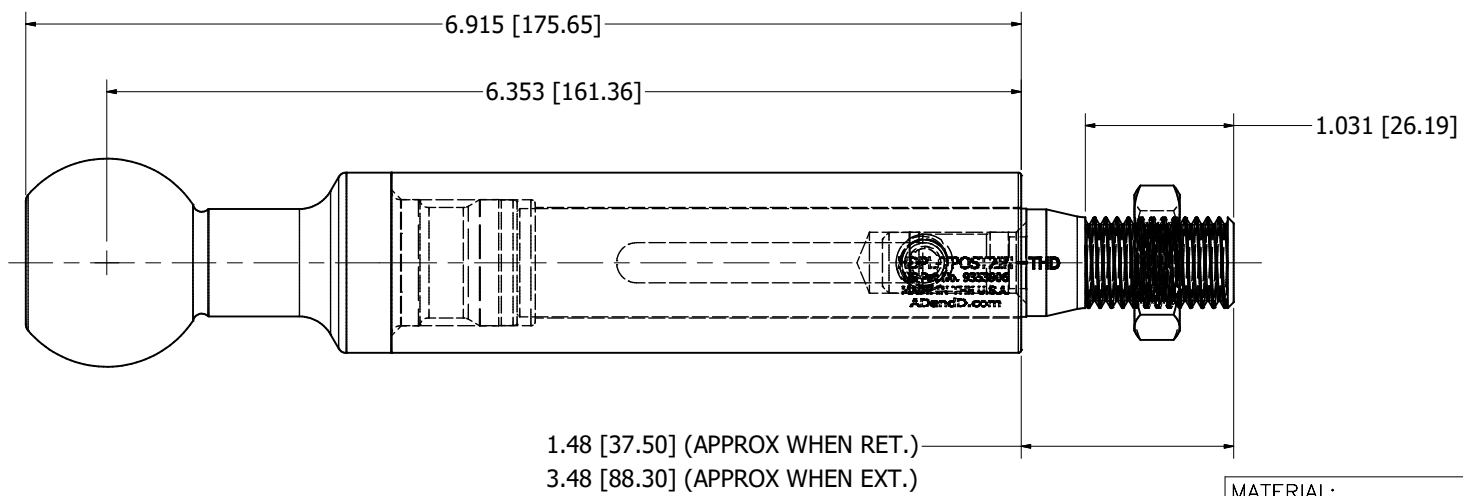
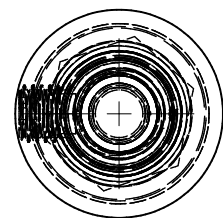
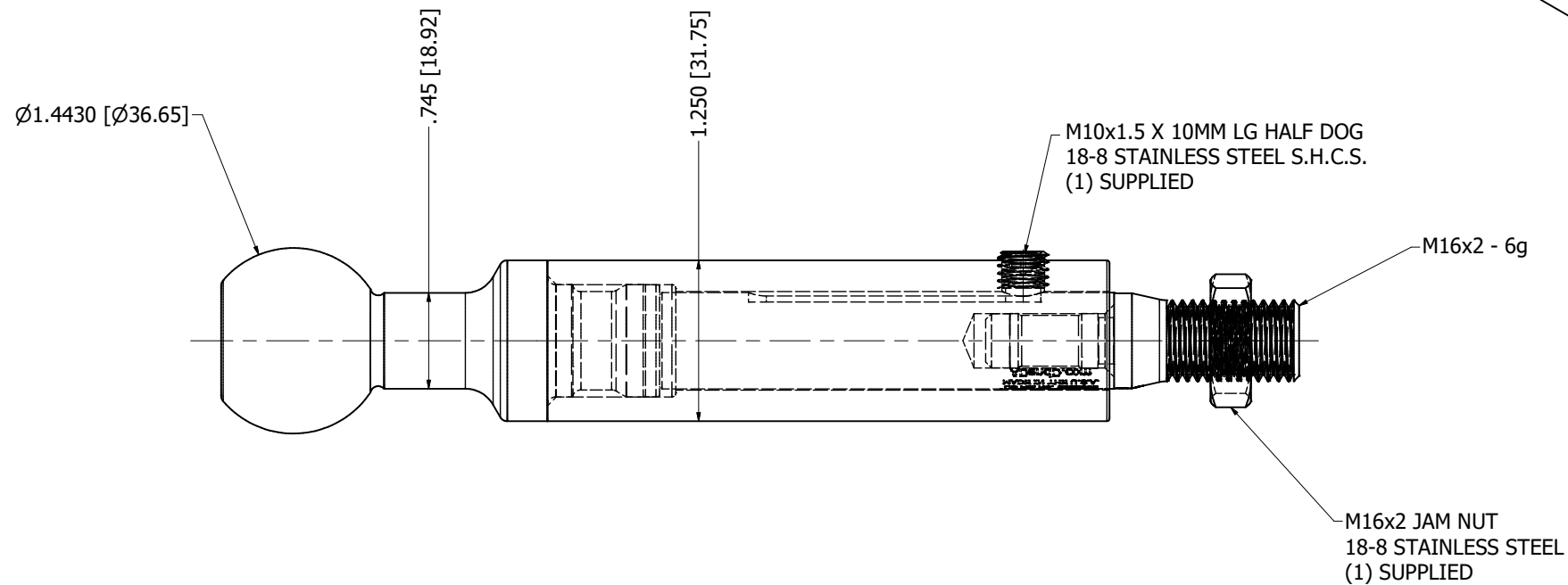
8 7 6 5 4 3 2 1

D

C

B

A



TOTAL ASSEMBLED WEIGHT  
0 lbs. 13.1 ozs.

8 7 6 5 4 3 2 1

MATERIAL:  
PATENT PENDING  
BREAK ALL SHARP CORNERS  
MARK DETAILS WITH PART No.  
UNLESS OTHERWISE SPECIFIED  
STANDARD TOLERANCE  
UNLESS OTHERWISE SPECIFIED  
2 PLACE DEC. ± .03  
3 PLACE DEC. ± .005  
4 PLACE DEC. ± .0005  
ANGLES ± 1°

REV	DESCRIPTION	DATE	DWN	CHK
REVISIONS				
ADandD.com				
DESCRIPTION				
<b>HDPL-TPOST2IN-THD</b>				
SCALE: FULL		DRAWN: BIDDINGER DATE 3/31/17		
SHEET SIZE D		CHECKED: _____ DATE _____		
No. OF SHEETS _____		APPROVED: _____ DATE _____		
SHEET No. _____		PART No. _____		
HDPL-TPOST2IN-THD				

8 7 6 5 4 3 2 1

D

D

C

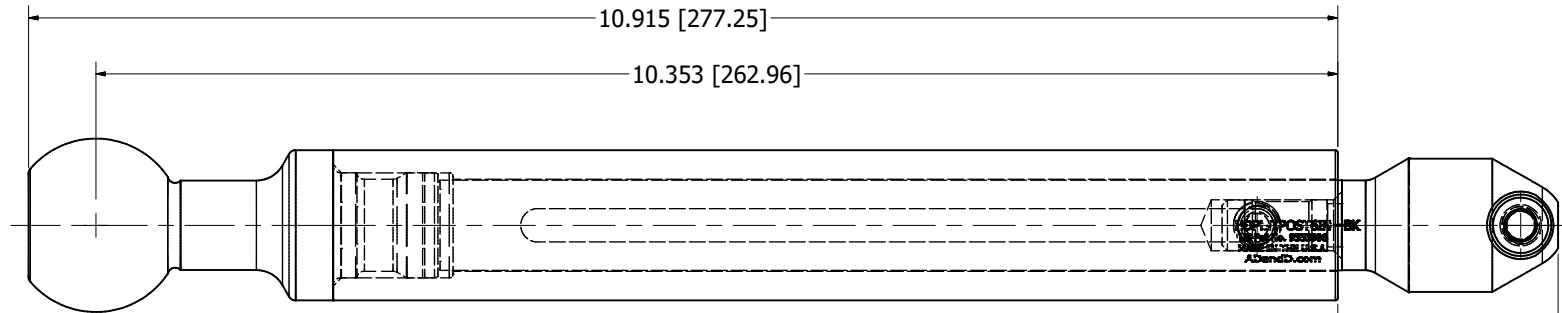
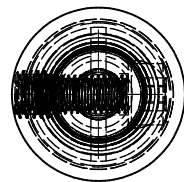
C

B

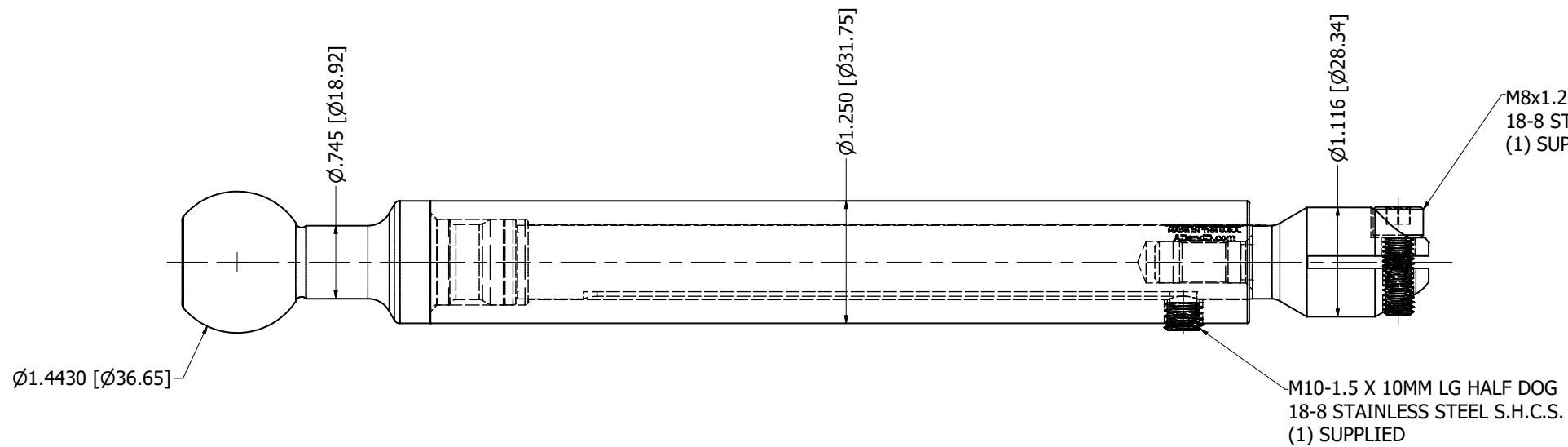
B

A

A



1.84 [46.66] (APPROX WHEN RET.)  
7.84 [199.06] (APPROX WHEN EXT.)



TOTAL ASSEMBLED WEIGHT  
1 lbs. 5.4 ozs.

8 7 6 5 4 3 2 1

MATERIAL:  
PATENT PENDING  
BREAK ALL SHARP CORNERS  
MARK DETAILS WITH PART No.  
UNLESS OTHERWISE SPECIFIED  
STANDARD TOLERANCE  
UNLESS OTHERWISE SPECIFIED  
2 PLACE DEC. ± .03  
3 PLACE DEC. ± .005  
4 PLACE DEC. ± .0005  
ANGLES ± 1'

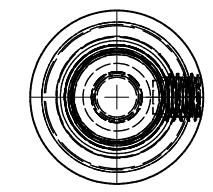
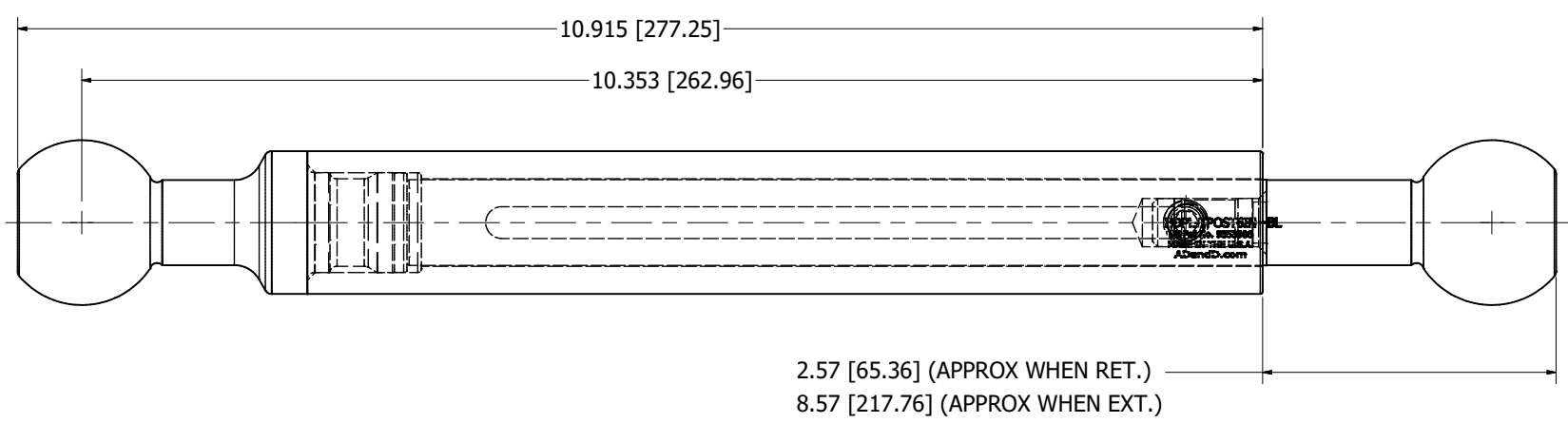
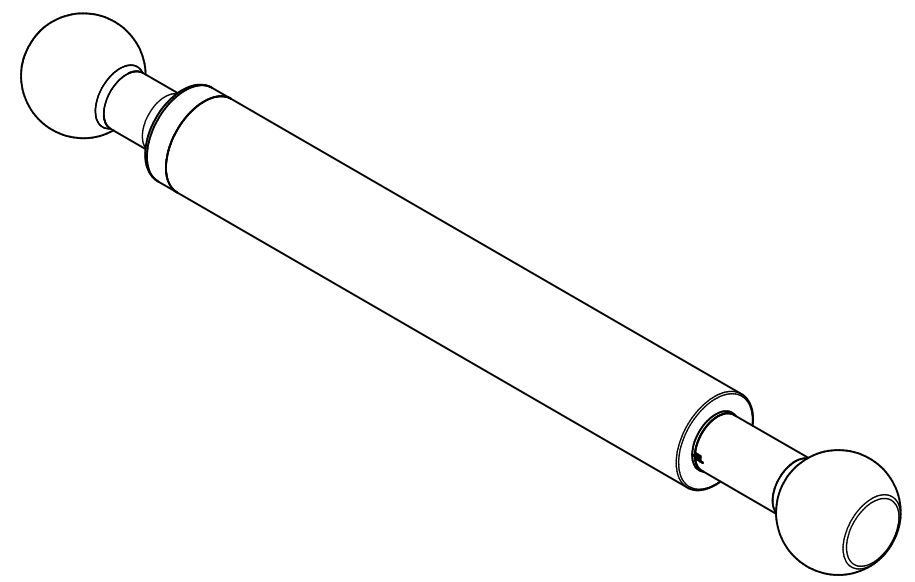
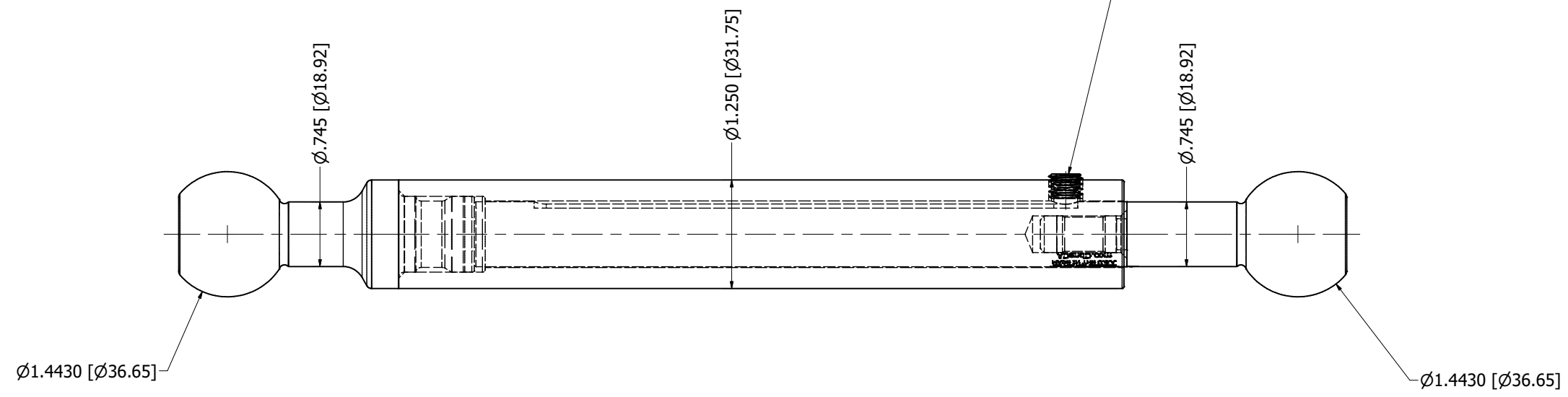
REV	DESCRIPTION	DATE	DWN	CHK



DESCRIPTION  
**HDPL-TPOST6IN-BK**  
SCALE: FULL DRAWN: BIDDINGER DATE 3/31/17  
SHEET SIZE D CHECKED: \_\_\_\_\_ DATE: \_\_\_\_\_  
APPROVED: \_\_\_\_\_  
No. OF SHEETS \_\_\_\_\_ PART No. \_\_\_\_\_  
SHEET No. \_\_\_\_\_ **HDPL-TPOST6IN-BK**



M10x1.5 X 10MM LG HALF DOG  
18-8 STAINLESS STEEL S.H.C.S.  
(1) SUPPLIED



TOTAL ASSEMBLED WEIGHT  
1 lbs. 6.6 ozs.

MATERIAL:  
PATENT PENDING  
BREAK ALL SHARP CORNERS  
MARK DETAILS WITH PART No.  
UNLESS OTHERWISE SPECIFIED  
STANDARD TOLERANCE  
UNLESS OTHERWISE SPECIFIED  
2 PLACE DEC. ± .03  
3 PLACE DEC. ± .005  
4 PLACE DEC. ± .0005  
ANGLES ± 1'

REV	DESCRIPTION	DATE	DWN	CHK



DESCRIPTION  
**HDPL-TPOST6IN-BL**  
SCALE: FULL DRAWN: BIDDINGER DATE 3/31/17  
SHEET SIZE D CHECKED: DATE  
APPROVED: DATE  
No. OF SHEETS PART No.  
SHEET No. HDPL-TPOST6IN-BL

8 7 6 5 4 3 2 1

8 7 6 5 4 3 2 1

D

D

C

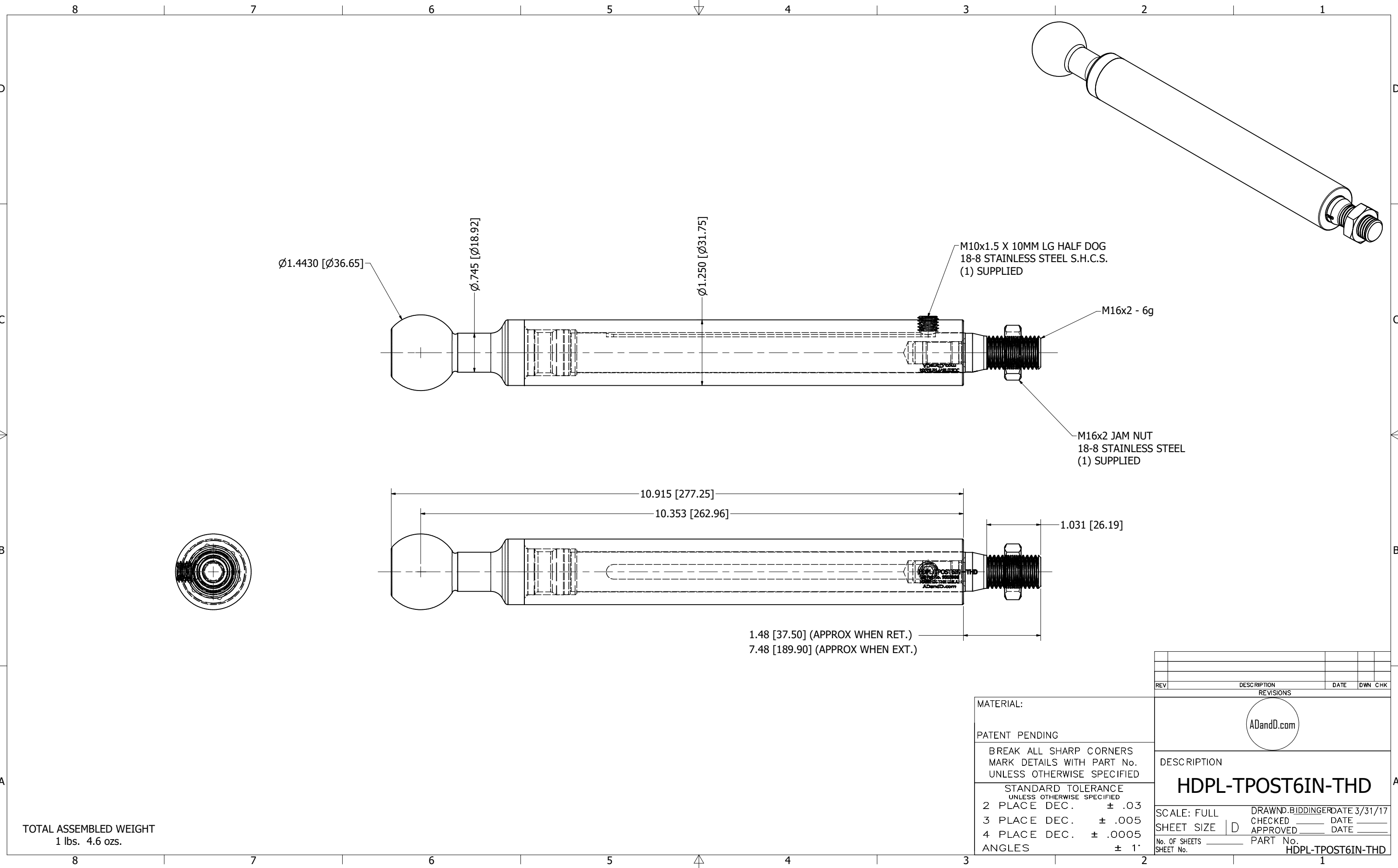
C

B

B

A

A



TOTAL ASSEMBLED WEIGHT  
1 lbs. 4.6 ozs.

MATERIAL:  
PATENT PENDING  
BREAK ALL SHARP CORNERS  
MARK DETAILS WITH PART No.  
UNLESS OTHERWISE SPECIFIED  
STANDARD TOLERANCE  
UNLESS OTHERWISE SPECIFIED  
2 PLACE DEC. ± .03  
3 PLACE DEC. ± .005  
4 PLACE DEC. ± .0005  
ANGLES ± 1'

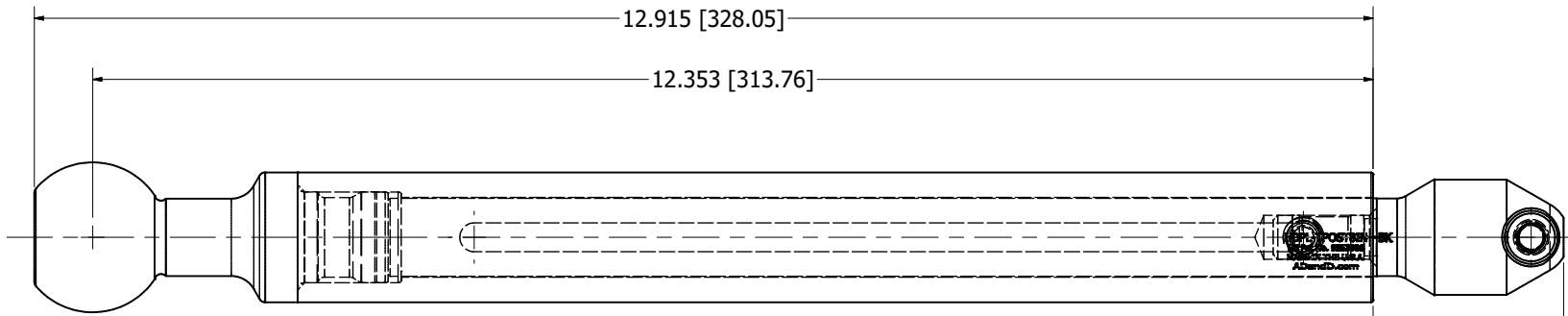
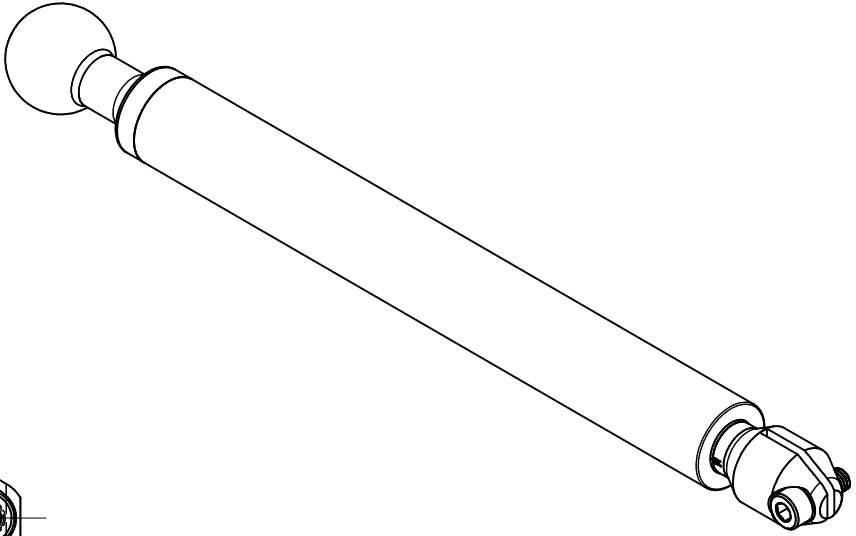
REV	DESCRIPTION	DATE	DWN	CHK



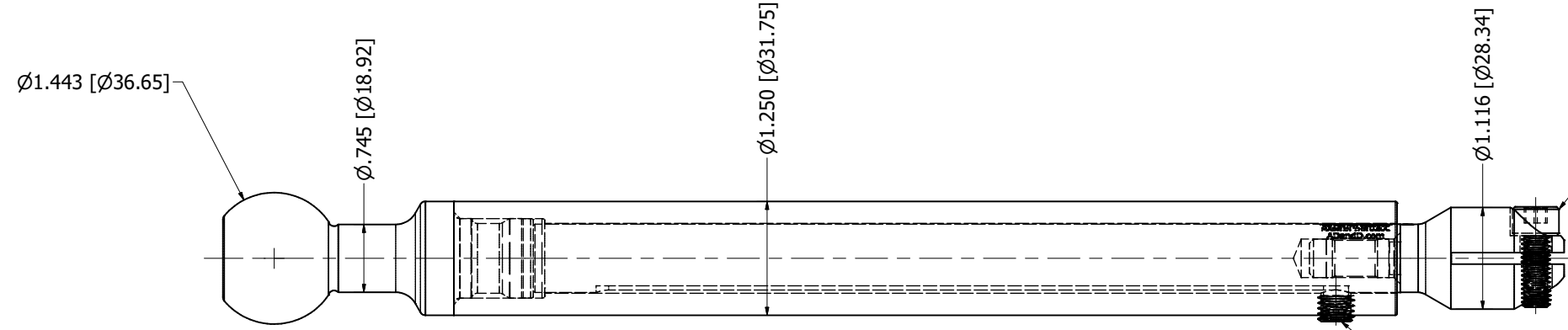
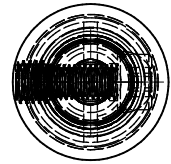
DESCRIPTION  
**HDPL-TPOST6IN-THD**

SCALE: FULL DRAWN: BIDDINGER DATE 3/31/17  
SHEET SIZE D CHECKED: DATE  
APPROVED: DATE  
No. OF SHEETS PART No.  
SHEET No. HDPL-TPOST6IN-THD

8 7 6 5 4 3 2 1



1.84 [46.66] (APPROX WHEN RET.)  
 9.84 [1185.16] (APPROX WHEN EXT.)



M8x1.25 X 20MM LG  
 18-8 STAINLESS STEEL S.H.C.S.  
 (1) SUPPLIED

M10x1.5 X 10MM LG HALF DOG  
 18-8 STAINLESS STEEL S.H.C.S.  
 (1) SUPPLIED

TOTAL ASSEMBLED WEIGHT  
 1 lbs. 8.3 ozs.

8 7 6 5 4 3 2 1

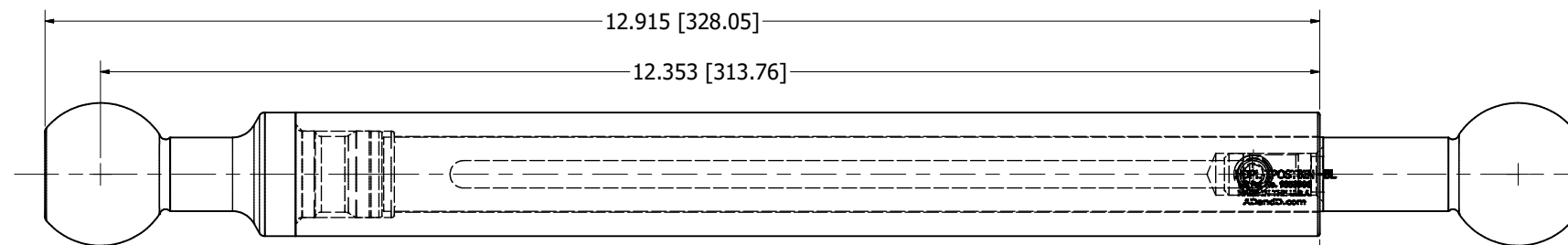
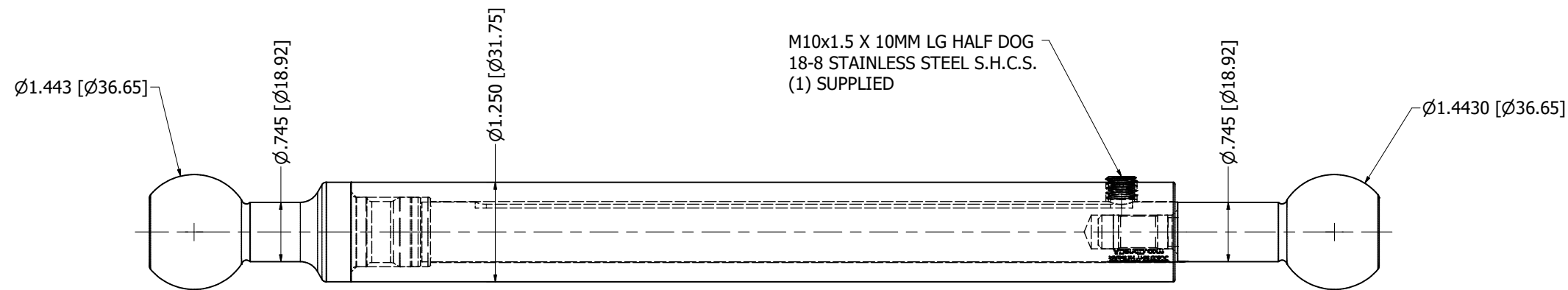
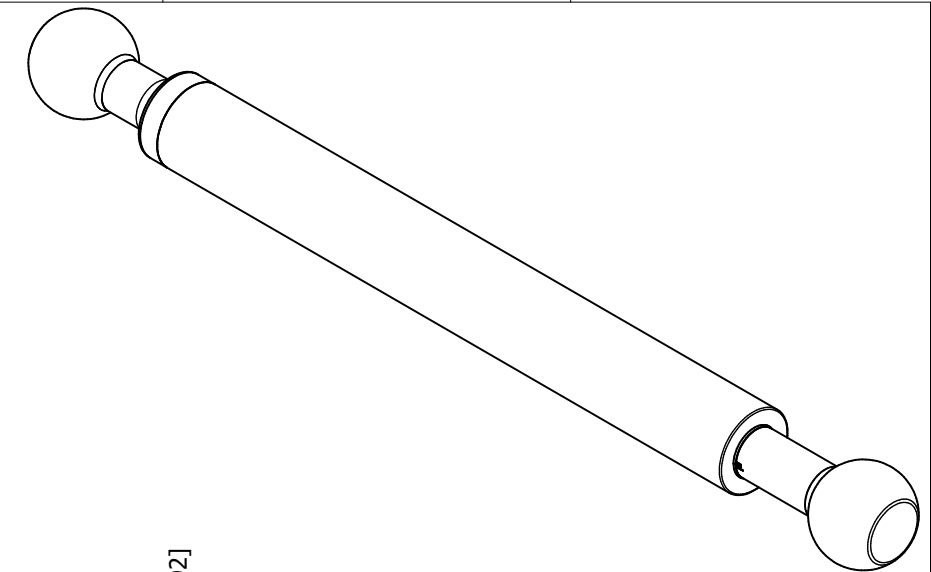
MATERIAL:  
 PATENT PENDING  
 BREAK ALL SHARP CORNERS  
 MARK DETAILS WITH PART No.  
 UNLESS OTHERWISE SPECIFIED  
 STANDARD TOLERANCE  
 UNLESS OTHERWISE SPECIFIED  
 2 PLACE DEC. ± .03  
 3 PLACE DEC. ± .005  
 4 PLACE DEC. ± .0005  
 ANGLES ± 1'

REV	DESCRIPTION	DATE	DWN	CHK

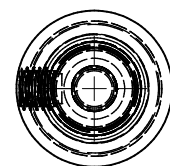


DESCRIPTION  
**HDPL-TPOST8IN-BK**  
 SCALE: FULL DRAWN: BIDDINGER DATE 3/31/17  
 SHEET SIZE D CHECKED: DATE: APPROVED: DATE:  
 No. OF SHEETS PART No. HDPL-TPOST8IN-BK

8 7 6 5 4 3 2 1



2.57 [65.36] (APPROX WHEN RET.)  
10.57 [268.56] (APPROX WHEN EXT.)



TOTAL ASSEMBLED WEIGHT  
1 lbs. 10.3 ozs.

8 7 6 5 4 3 2 1

REV	DESCRIPTION	DATE	DWN	CHK

REVISIONS

ADandD.com

DESCRIPTION

**HDPL-TPOST8IN-BL**

SCALE: FULL DRAWN: BIDDINGER DATE 3/31/17  
SHEET SIZE D CHECKED: DATE: APPROVED: DATE:  
No. OF SHEETS PART No. HDPL-TPOST8IN-BL  
SHEET No.

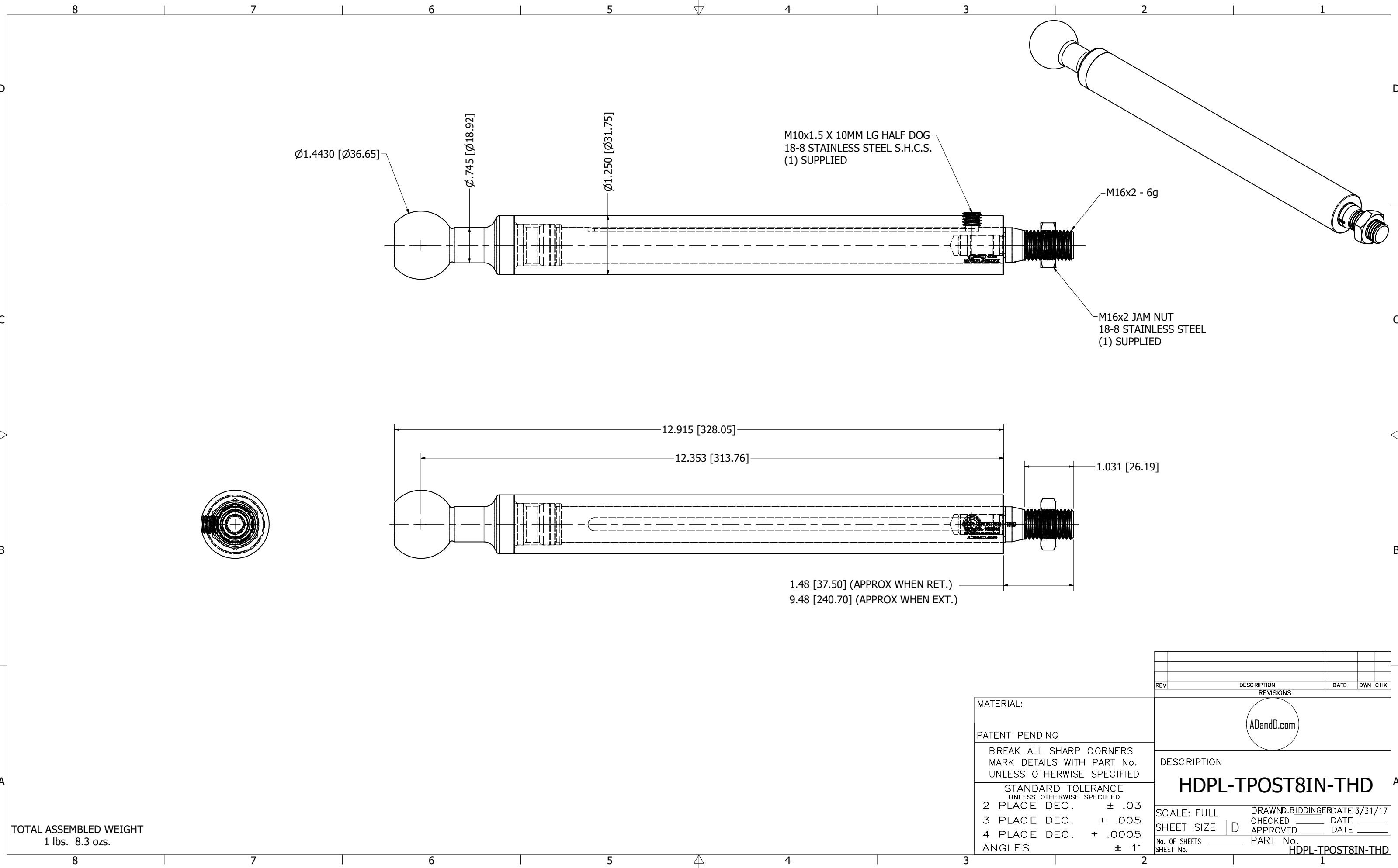
MATERIAL:

PATENT PENDING

BREAK ALL SHARP CORNERS  
MARK DETAILS WITH PART No.  
UNLESS OTHERWISE SPECIFIED

STANDARD TOLERANCE  
UNLESS OTHERWISE SPECIFIED

2 PLACE DEC. ± .03  
3 PLACE DEC. ± .005  
4 PLACE DEC. ± .0005  
ANGLES ± 1°



TOTAL ASSEMBLED WEIGHT  
1 lbs. 8.3 ozs.

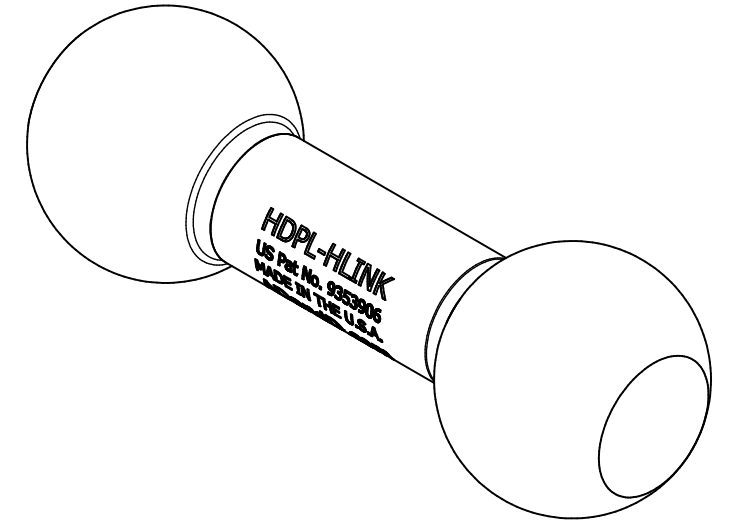
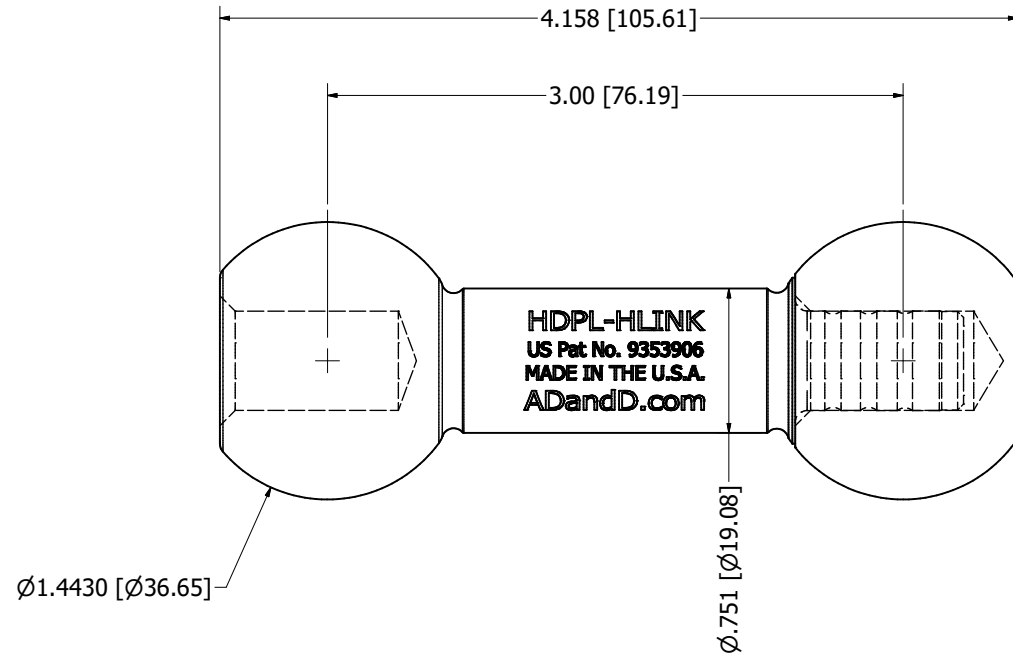
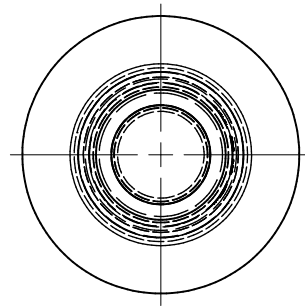
MATERIAL:  
PATENT PENDING  
BREAK ALL SHARP CORNERS  
MARK DETAILS WITH PART No.  
UNLESS OTHERWISE SPECIFIED  
STANDARD TOLERANCE  
UNLESS OTHERWISE SPECIFIED  
2 PLACE DEC. ± .03  
3 PLACE DEC. ± .005  
4 PLACE DEC. ± .0005  
ANGLES ± 1'

REV	DESCRIPTION	DATE	DWN	CHK



DESCRIPTION  
**HDPL-TPOST8IN-THD**

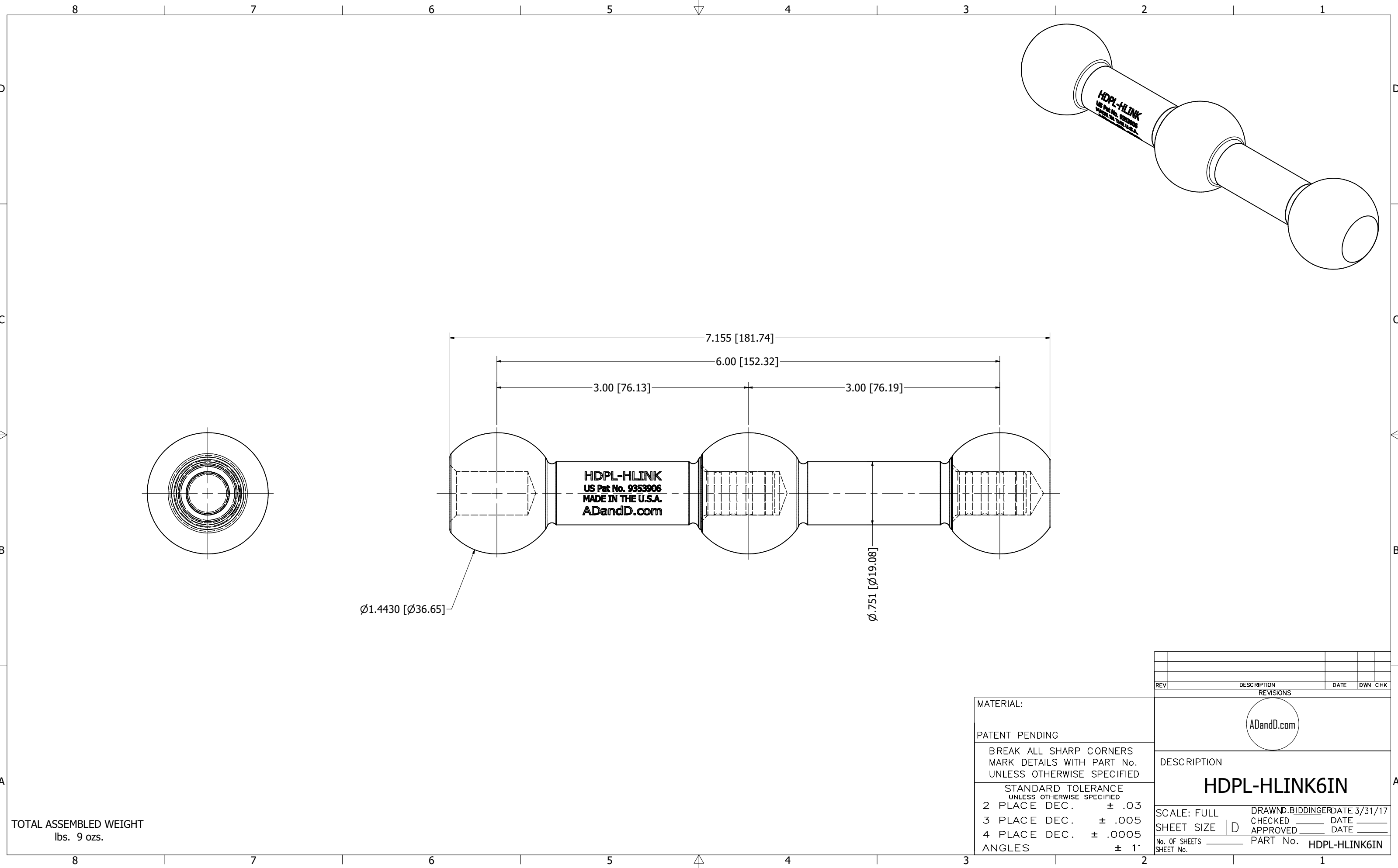
SCALE: FULL DRAWND. BIDDINGER DATE 3/31/17  
SHEET SIZE D CHECKED \_\_\_\_\_ DATE \_\_\_\_\_  
APPROVED \_\_\_\_\_ DATE \_\_\_\_\_  
No. OF SHEETS \_\_\_\_\_ PART No. \_\_\_\_\_  
SHEET No. \_\_\_\_\_ HDPL-TPOST8IN-THD



TOTAL ASSEMBLED WEIGHT  
0 lbs. 5.5 ozs.

MATERIAL:  
PATENT PENDING  
BREAK ALL SHARP CORNERS  
MARK DETAILS WITH PART No.  
UNLESS OTHERWISE SPECIFIED  
STANDARD TOLERANCE  
UNLESS OTHERWISE SPECIFIED  
2 PLACE DEC. ± .03  
3 PLACE DEC. ± .005  
4 PLACE DEC. ± .0005  
ANGLES ± 1'

REV	DESCRIPTION	DATE	DWN	CHK
REVISIONS				
ADandD.com				
DESCRIPTION				
<b>HDPL-HLINK3IN</b>				
SCALE: FULL		DRAWN: BIDDINGER DATE 3/31/17		
SHEET SIZE   D		CHECKED: _____ DATE: _____		
No. OF SHEETS _____		APPROVED: _____ DATE: _____		
SHEET No. _____		PART No. HDPL-HLINK3IN		



TOTAL ASSEMBLED WEIGHT  
lbs. 9 ozs.

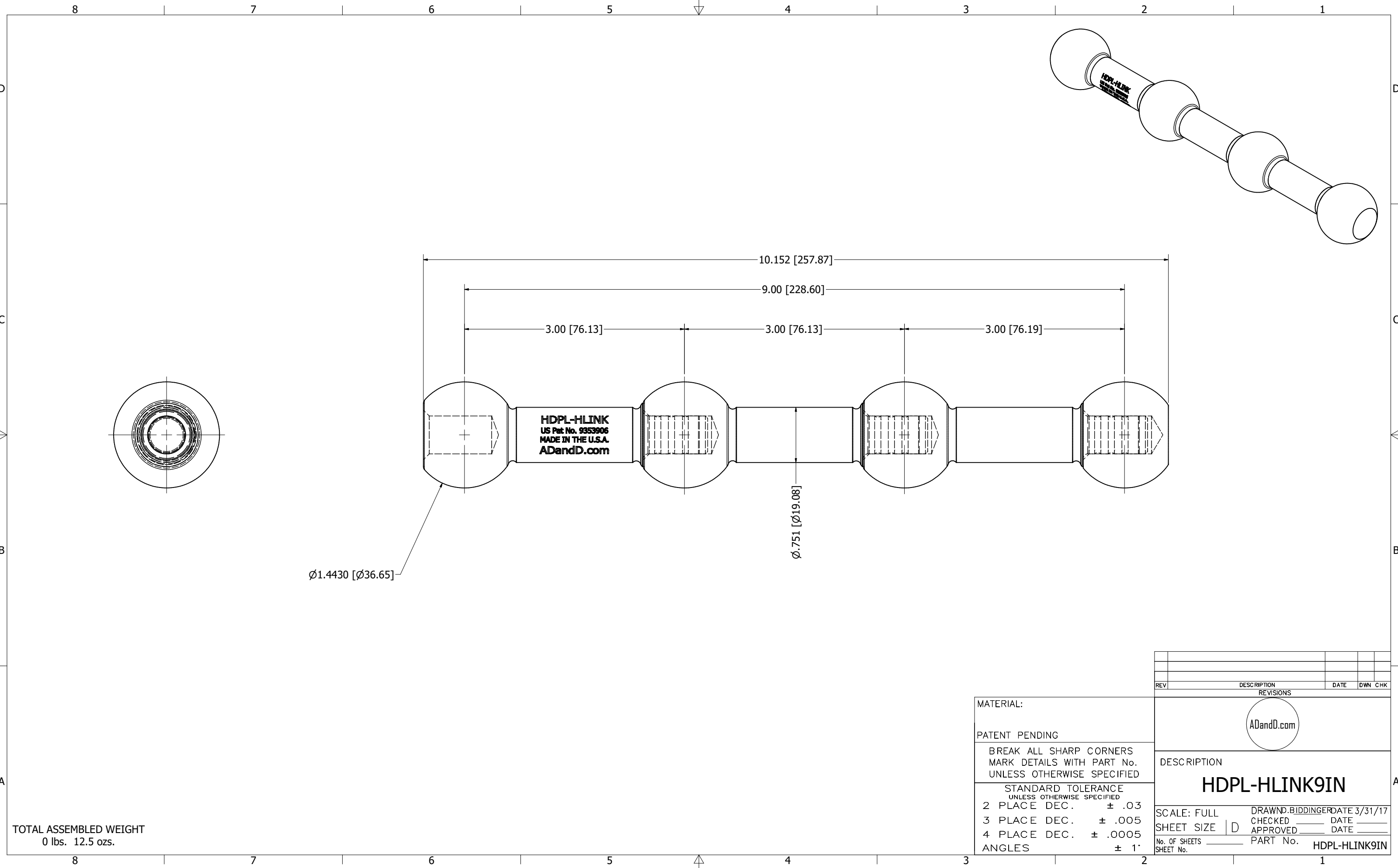
MATERIAL:  
PATENT PENDING  
BREAK ALL SHARP CORNERS  
MARK DETAILS WITH PART No.  
UNLESS OTHERWISE SPECIFIED  
STANDARD TOLERANCE  
UNLESS OTHERWISE SPECIFIED  
2 PLACE DEC.  $\pm .03$   
3 PLACE DEC.  $\pm .005$   
4 PLACE DEC.  $\pm .0005$   
ANGLES  $\pm 1'$

REV	DESCRIPTION	DATE	DWN	CHK



DESCRIPTION  
**HDPL-HLINK6IN**

SCALE: FULL DRAWN: BIDDINGER DATE 3/31/17  
SHEET SIZE D CHECKED: \_\_\_\_\_ DATE: \_\_\_\_\_  
APPROVED: \_\_\_\_\_ DATE: \_\_\_\_\_  
No. OF SHEETS \_\_\_\_\_ PART No. HDPL-HLINK6IN  
SHEET No. \_\_\_\_\_



TOTAL ASSEMBLED WEIGHT  
0 lbs. 12.5 ozs.

MATERIAL:  
PATENT PENDING  
BREAK ALL SHARP CORNERS  
MARK DETAILS WITH PART No.  
UNLESS OTHERWISE SPECIFIED  
STANDARD TOLERANCE  
UNLESS OTHERWISE SPECIFIED  
2 PLACE DEC. ± .03  
3 PLACE DEC. ± .005  
4 PLACE DEC. ± .0005  
ANGLES ± 1'

REV	DESCRIPTION	DATE	DWN	CHK

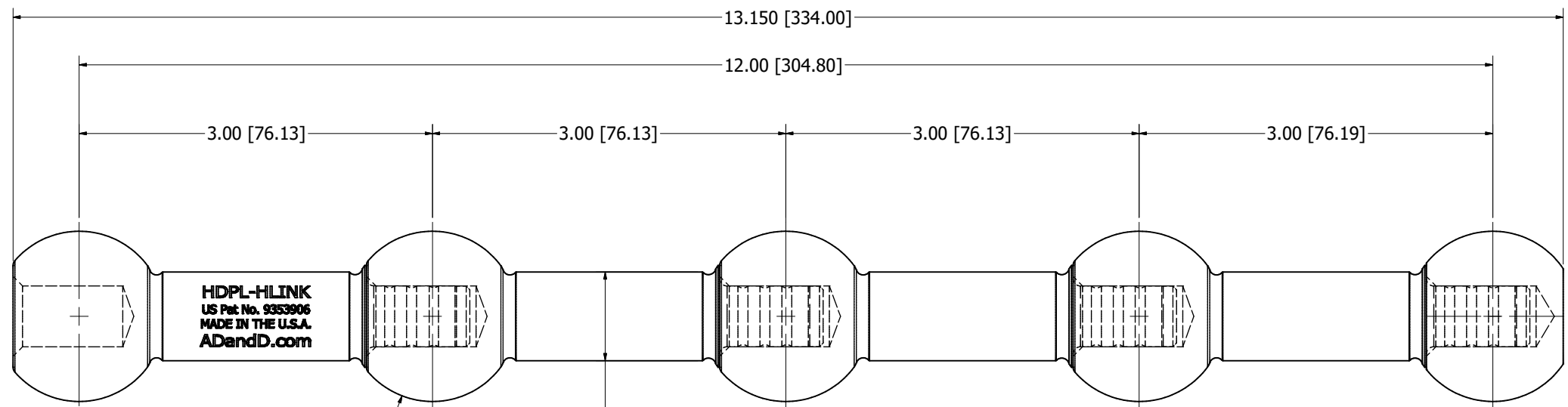
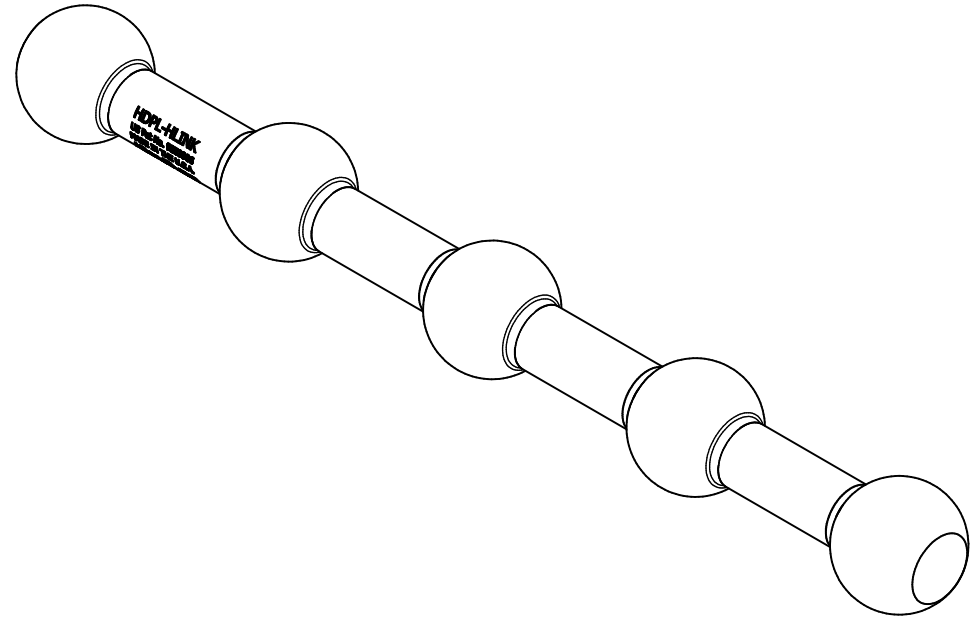


DESCRIPTION  
**HDPL-HLINK9IN**

SCALE: FULL DRAWN: BIDDINGER DATE 3/31/17  
SHEET SIZE D CHECKED: \_\_\_\_\_ DATE: \_\_\_\_\_  
APPROVED: \_\_\_\_\_ DATE: \_\_\_\_\_  
No. OF SHEETS \_\_\_\_\_ PART No. HDPL-HLINK9IN  
SHEET No. \_\_\_\_\_



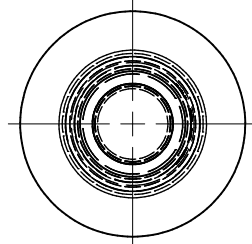
8 7 6 5 4 3 2 1



HDPL-HLINK  
US Pat No. 9353906  
MADE IN THE U.S.A.  
ADandD.com

Ø1.4430 [Ø36.65]

Ø.751 [Ø19.08]



TOTAL ASSEMBLED WEIGHT  
1 lbs. 0 ozs.

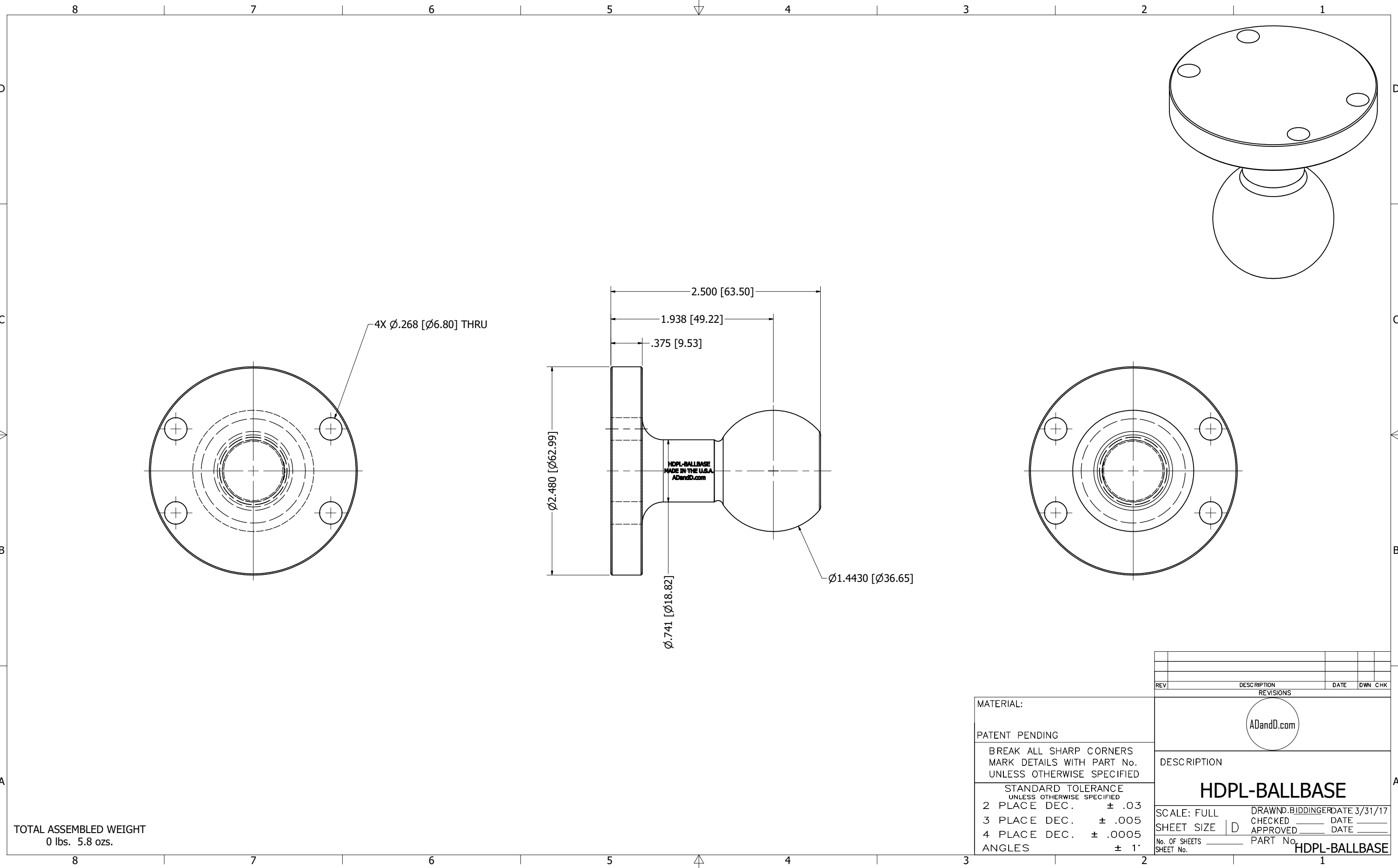
8 7 6 5 4 3 2 1

MATERIAL:  
PATENT PENDING  
BREAK ALL SHARP CORNERS  
MARK DETAILS WITH PART No.  
UNLESS OTHERWISE SPECIFIED  
STANDARD TOLERANCE  
UNLESS OTHERWISE SPECIFIED  
2 PLACE DEC. ± .03  
3 PLACE DEC. ± .005  
4 PLACE DEC. ± .0005  
ANGLES ± 1'

REV	DESCRIPTION	DATE	DWN	CHK



DESCRIPTION  
**HDPL-HLINK12IN**  
SCALE: FULL DRAWN: BIDDINGER DATE 3/31/17  
SHEET SIZE D CHECKED: \_\_\_\_\_ DATE: \_\_\_\_\_  
APPROVED: \_\_\_\_\_ DATE: \_\_\_\_\_  
No. OF SHEETS \_\_\_\_\_ PART No. HDPL-HLINK12IN  
SHEET No. \_\_\_\_\_



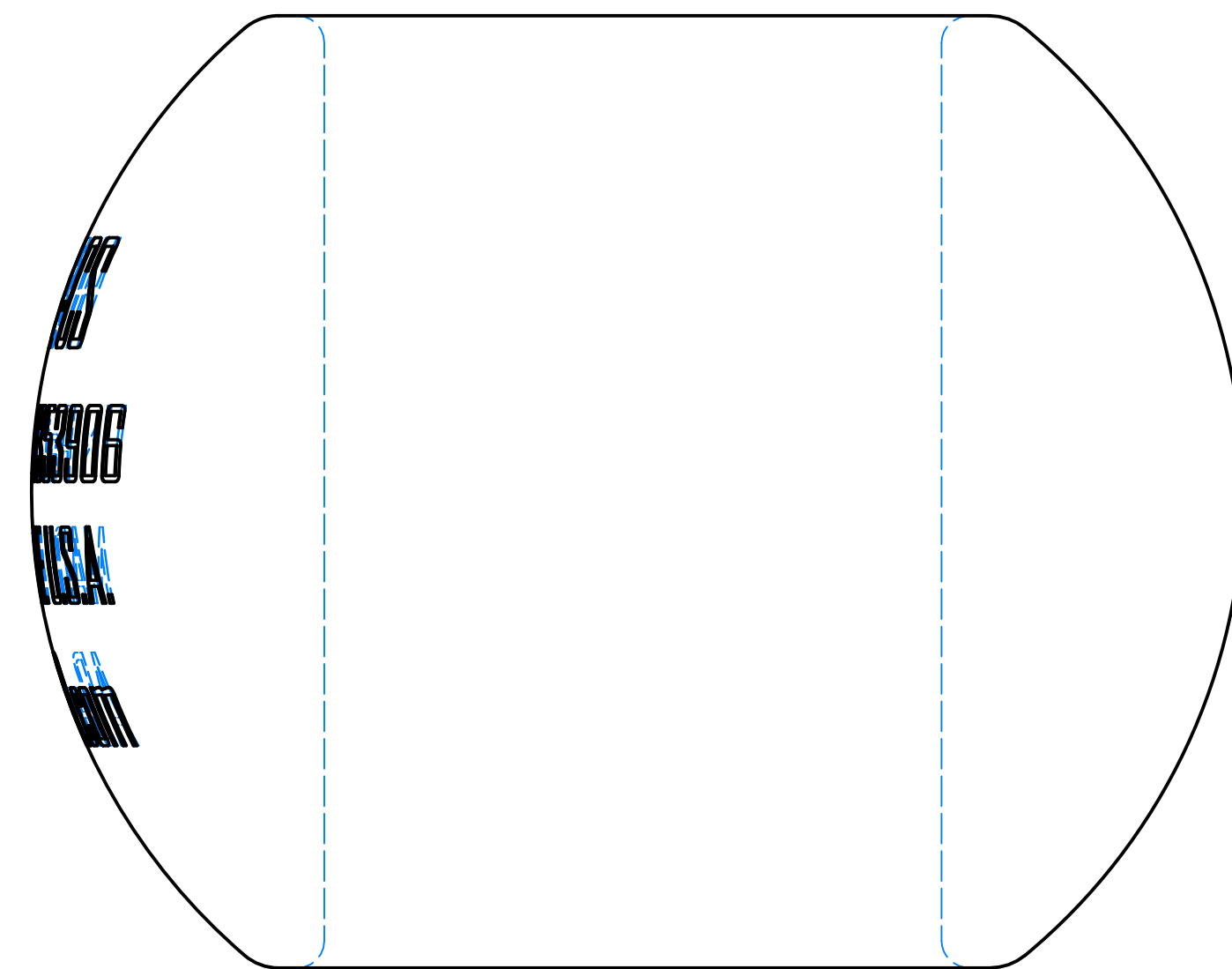
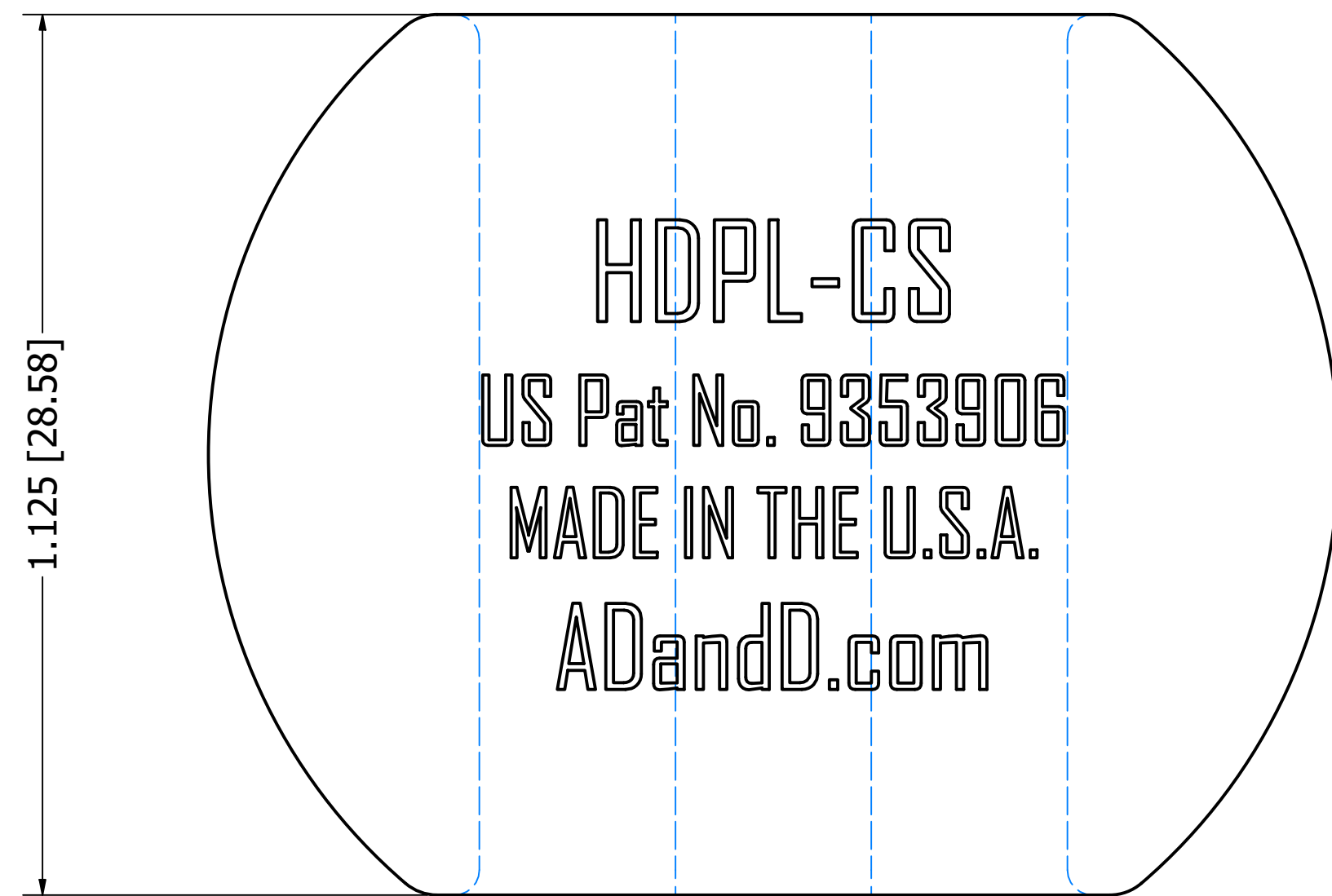
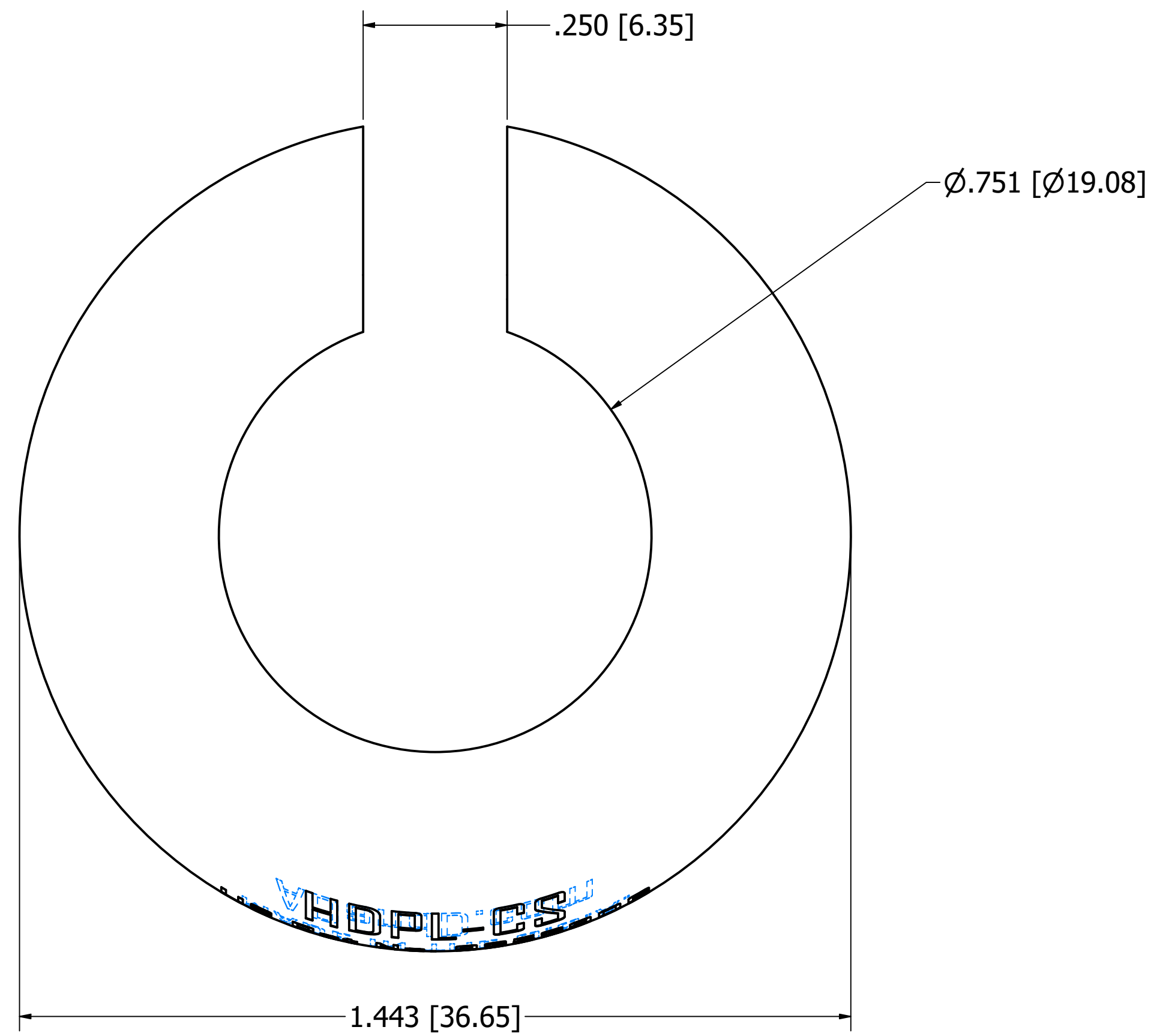
TOTAL ASSEMBLED WEIGHT  
0 lbs. 5.8 ozs.

MATERIAL:  
PATENT PENDING  
BREAK ALL SHARP CORNERS  
MARK DETAILS WITH PART No.  
UNLESS OTHERWISE SPECIFIED  
STANDARD TOLERANCE  
UNLESS OTHERWISE SPECIFIED  
2 PLACE DEC. ± .03  
3 PLACE DEC. ± .005  
4 PLACE DEC. ± .0005  
ANGLES ± 1'


REV	DESCRIPTION	DATE	DWN	CHK

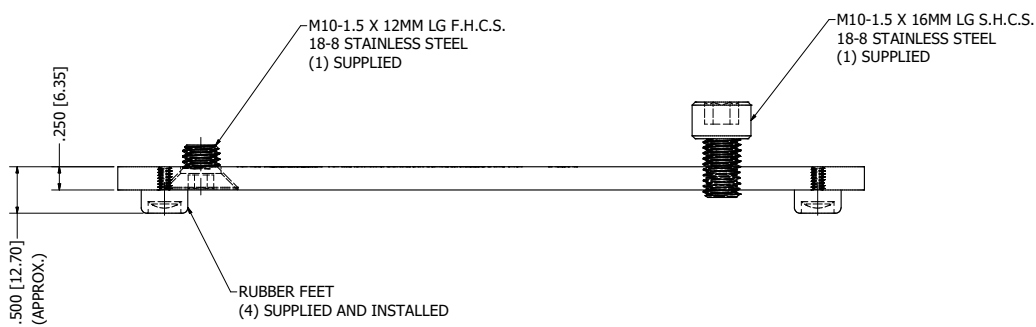
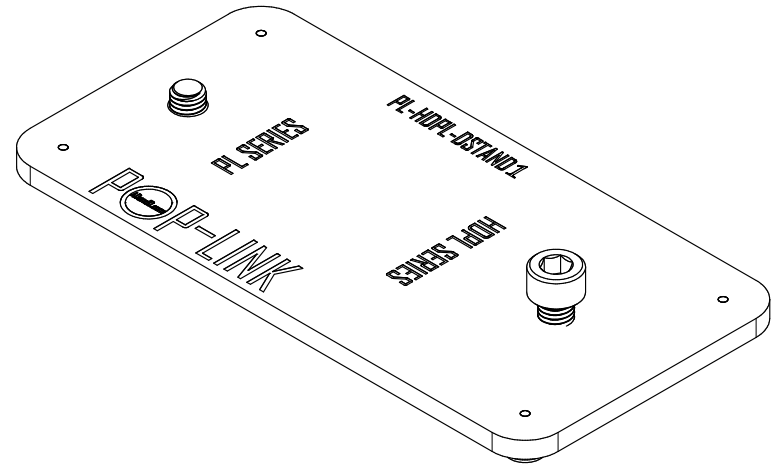
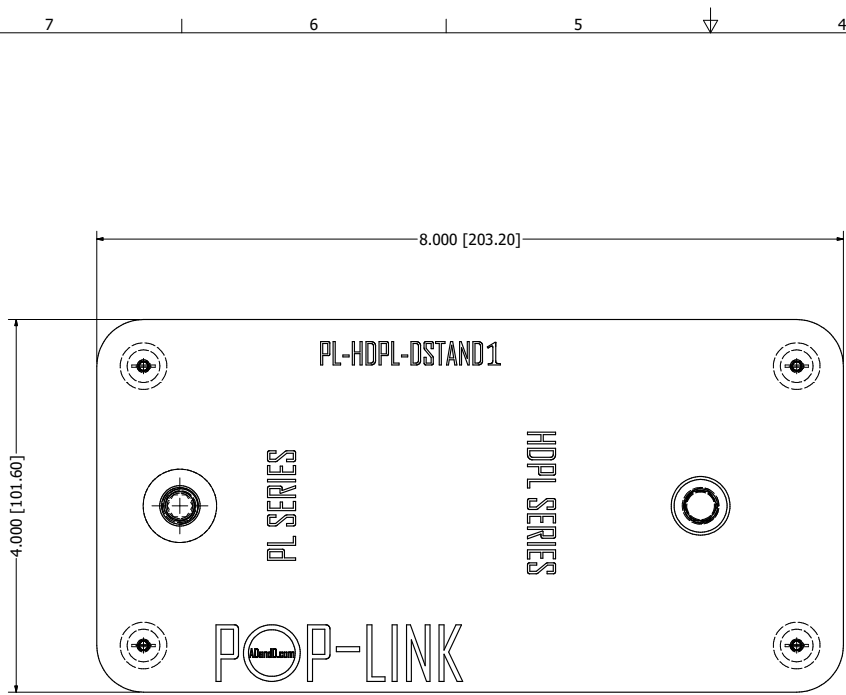


DESCRIPTION  
**HDPL-BALLBASE**  
SCALE: FULL DRAWN: BIDDINGER DATE 3/31/17  
SHEET SIZE D CHECKED: DATE: APPROVED: DATE:  
No. OF SHEETS PART No. HDPL-BALLBASE  
SHEET No.



PATENT PENDING	
BREAK ALL SHARP EDGES AND REMOVE ALL BURRS UNLESS OTHERWISE SPECIFIED	
MARK DETAILS WITH P/N, MATERIAL & HEAT TREAT SPEC UNLESS OTHERWISE SPECIFIED	
ALL WEIGHTS ARE ESTIMATED AND SHOULD NOT BE USED IN LOADING CALCULATIONS	
STANDARD TOLERANCE UNLESS OTHERWISE SPECIFIED	GEOMETRIC CHARACTERISTIC SYMBOLS PER ASME Y14.5M - 1994
2 PLACE DEC. ± .030	FLATNESS
3 PLACE DEC. ± .005	STRAIGHTNESS
4 PLACE DEC. ± .0005	CIRCULARITY
ANGLES ± 1°	CYLINDRICITY
THIRD ANGLE PROJECTION	PROFILE OF A SURFACE
	PERPENDICULARITY
	PARALLELISM
	ANGULARITY
	CIRC RUNOUT
	TOTAL RUNOUT
	POSITION
	CONCENTRICITY
	DIAMETER
	AT MAX MATL. CONDITION
	REGARDLESS OF FEATURE SIZE
	AT LEAST MATL. CONDITION
	DATUM FEATURE

A	RELEASED TO PRODUCTION	3/6/2020	S. RILEY
ZONE/REV	DESCRIPTION	DATE	APPROVED BY
REVISIONS			
 <b>Pop-Link</b> Mounting Systems			
<b>HDPL SERIES CLAM SHELL</b>			
MATERIAL:		DESIGNED BY: S. RILEY	
FINISH:		DRAWN BY: S. RILEY	
WT.(LBS): 0.087 lbmass		DRAWN DATE: 5/8/2020	
SHEET. SIZE: D		SCALE: 5 : 1	
DETAIL NO. HDPL-CS			REV. A



MATERIAL:  
 PATENT PENDING  
 BREAK ALL SHARP CORNERS  
 MARK DETAILS WITH PART No.  
 UNLESS OTHERWISE SPECIFIED  
 STANDARD TOLERANCE  
 UNLESS OTHERWISE SPECIFIED  
 2 PLACE DEC. ± .03  
 3 PLACE DEC. ± .005  
 4 PLACE DEC. ± .0005  
 ANGLES ± 1'

REV	DESCRIPTION	DATE	DRN	CHK



DESCRIPTION  
**PL-HDPL-DSTAND1**  
 SCALE: FULL  
 SHEET SIZE | D  
 No. OF SHEETS \_\_\_\_\_ PART No. PL-HDPL-DSTAND1  
 SHEET No. \_\_\_\_\_  
 DRAWN: BIDDING DATE 3/31/17  
 CHECKED \_\_\_\_\_ DATE \_\_\_\_\_  
 APPROVED \_\_\_\_\_ DATE \_\_\_\_\_

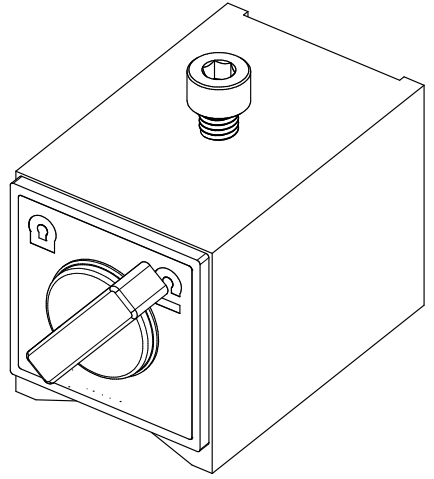
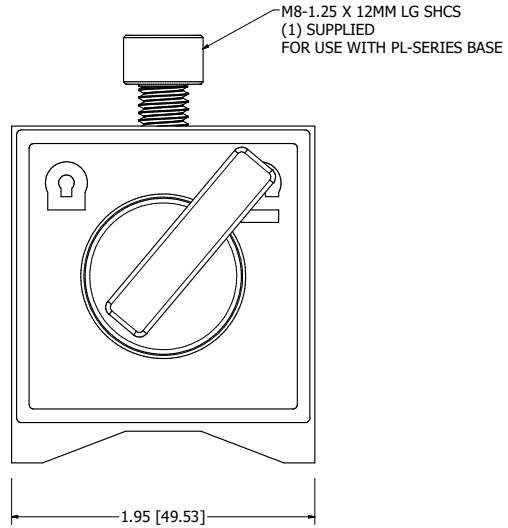
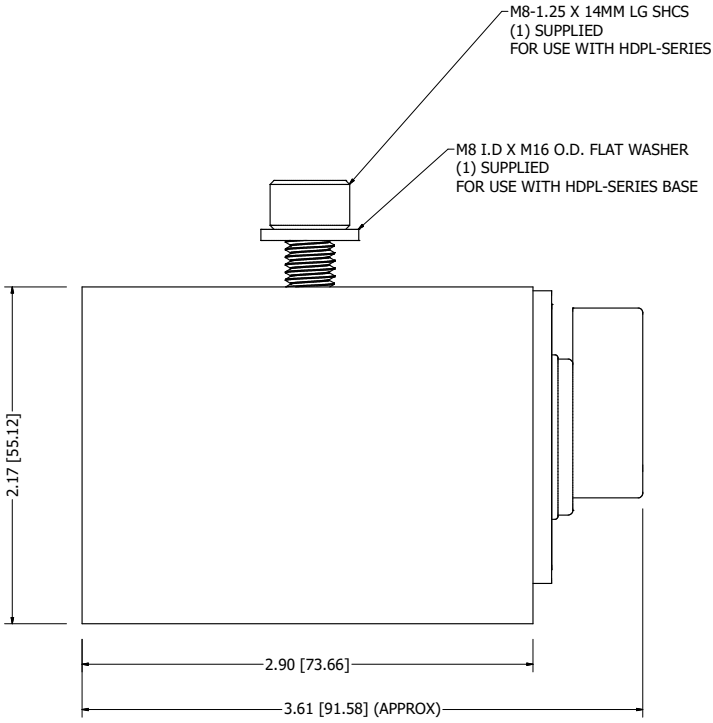
8 7 6 5 4 3 2 1

D

C

B

A



MFG. RATING: 220 LBS.

REV	DESCRIPTION	DATE	DWN	CHK

MATERIAL:

PATENT PENDING

BREAK ALL SHARP CORNERS  
MARK DETAILS WITH PART No.  
UNLESS OTHERWISE SPECIFIED

STANDARD TOLERANCE  
UNLESS OTHERWISE SPECIFIED

2 PLACE DEC. ± .03  
3 PLACE DEC. ± .005  
4 PLACE DEC. ± .0005  
ANGLES ± 1'

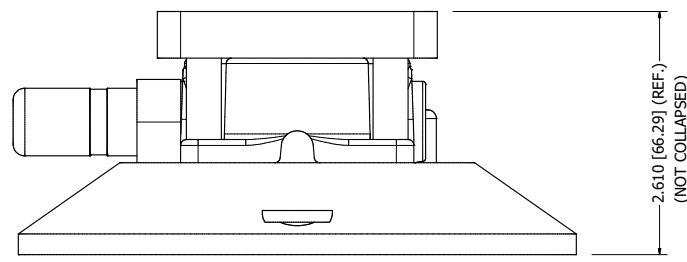
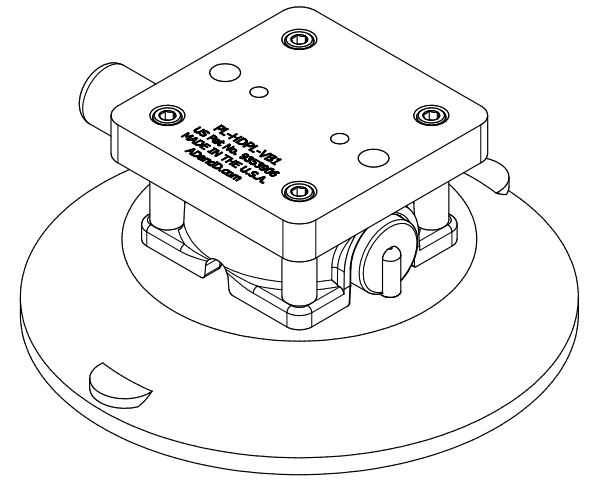
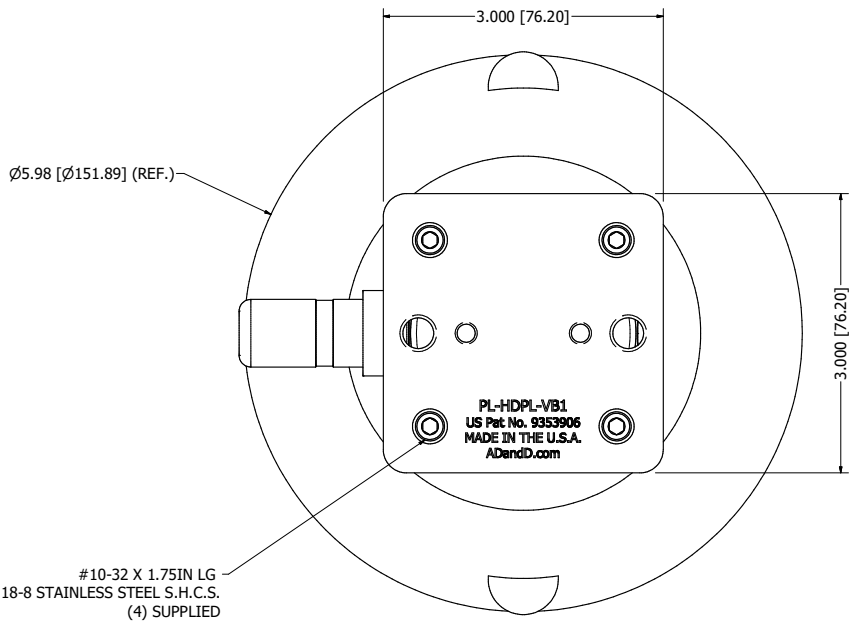
ADandD.com

DESCRIPTION

**PL-HDPL-MAG1**

SCALE: FULL DRAWN: BIDDING DATE 3/31/17  
SHEET SIZE | D CHECKED: DATE  
APPROVED: DATE  
No. OF SHEETS PART No. PL-HDPL-MAG1  
SHEET No.

8 7 6 5 4 3 2 1



MATERIAL:

PATENT PENDING

BREAK ALL SHARP CORNERS  
MARK DETAILS WITH PART No.  
UNLESS OTHERWISE SPECIFIED

STANDARD TOLERANCE  
UNLESS OTHERWISE SPECIFIED

2 PLACE DEC. ± .03  
3 PLACE DEC. ± .005  
4 PLACE DEC. ± .0005  
ANGLES ± 1'

REV	DESCRIPTION	DATE	DRN	CHK
	REVISIONS			

ADandD.com

DESCRIPTION

**PL-VB1**

SCALE: FULL DRAWN: BIDDING DATE 3/31/17  
SHEET SIZE | D CHECKED: DATE  
APPROVED: DATE  
No. OF SHEETS PART No. PL-VB1  
SHEET No.