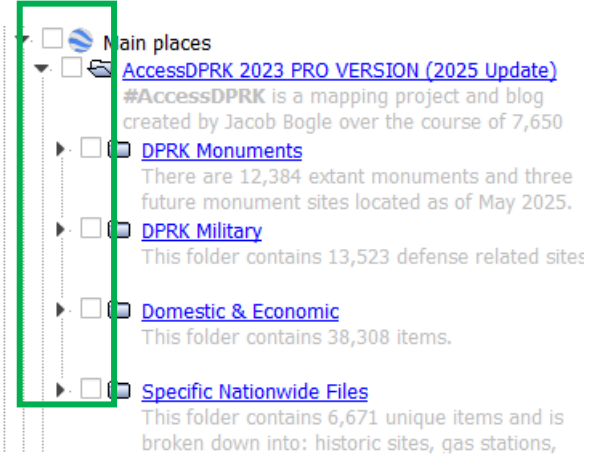
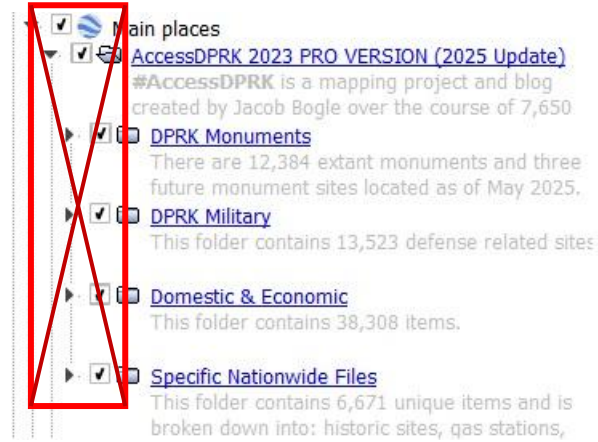


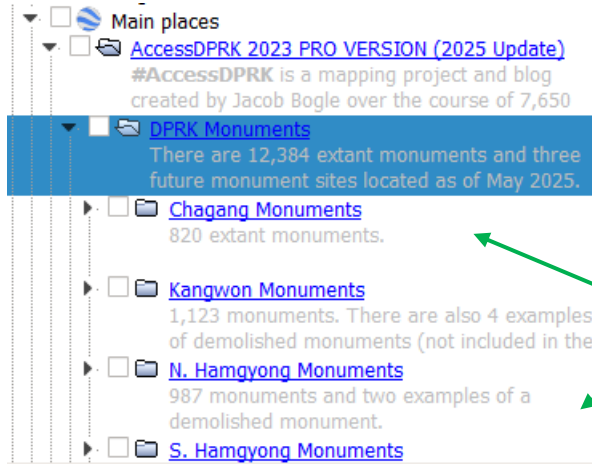
Step One



When you first open the file within Google Earth, do not have any boxes selected. Note how all the boxes are empty.



Do not have all of the boxes with a checkmark or your computer will take a very long time to load the map and may even crash.



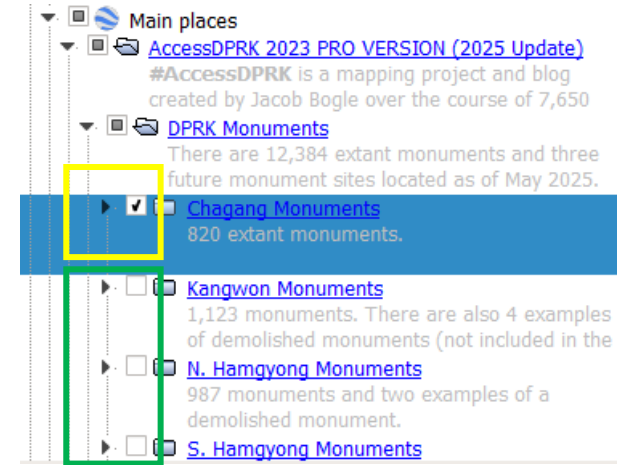
Main monuments folder

Monuments by Province

The main file is divided into four main folders: monuments, military, domestic, and specific nationwide files.

The monument, military, and domestic folders are further subdivided into provinces.

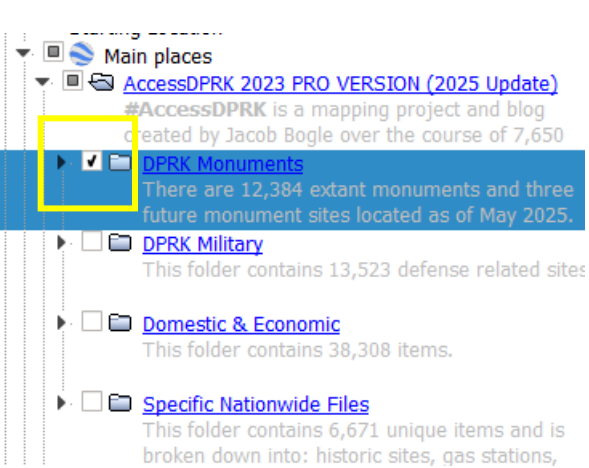
Step Two



Expand which main topic you're interested in (monuments, for this example) to show the list of provinces.

Notice how only the "Chagang Monuments" folder box has a checkmark. The other provincial boxes are empty.

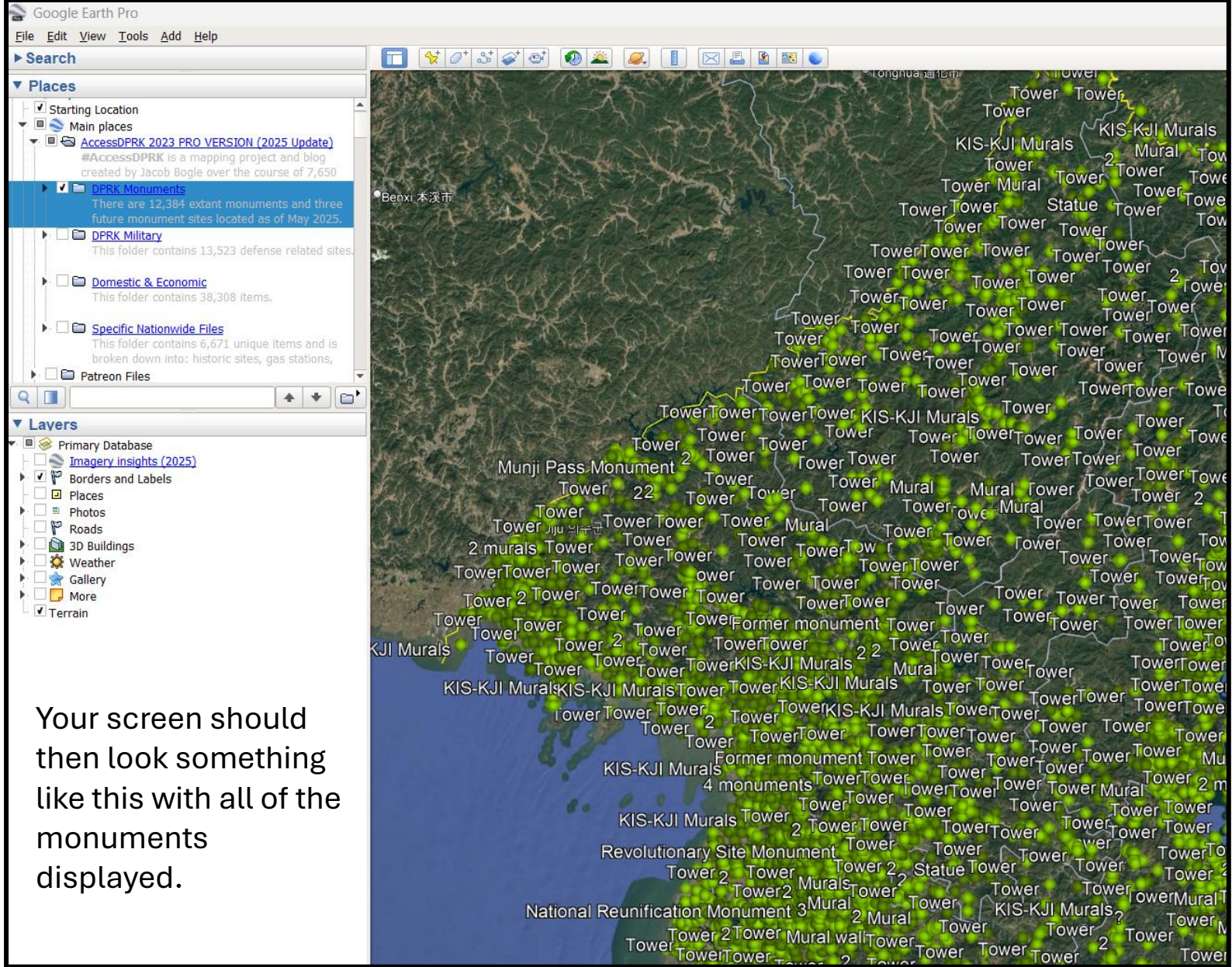
AccessDPRK Display Guide.
JacobBogle.com, © 2026



By checking the “DPRK Monuments” folder, all of the monuments nationwide will be displayed.

But with over 12,000 monuments placemarks, most computers will start to lag.

It is not recommended that you check (or “turn on”) more than one of the four main folders at once.



Your screen should then look something like this with all of the monuments displayed.

Main Monuments Folders

- Main places
 - [AccessDPRK 2023 PRO VERSION \(2025 Update\)](#)
#AccessDPRK is a mapping project and blog created by Jacob Bogle over the course of 7,650 hours which aims
 - DPRK Monuments**
There are 12,384 extant monuments and three future monument sites located as of May 2025.
 - Chagang Monuments**
820 extant monuments.
 - Kangwon Monuments**
1,123 monuments. There are also 4 examples of demolished monuments (not included in the overall
 - N. Hamgyong Monuments**
987 monuments and two examples of a demolished monument.
 - S. Hamgyong Monuments**
1,423 monuments. There are also 7 examples of a demolished monument (not included in the overall
 - N. Hwanghae Monuments**
1,588 monuments. There are also 7 examples of former monuments, but they are not included in the
 - S. Hwanghae Monuments**
1,337 monuments and 13 examples of a former monument (not included in the count).
 - N. Pyongan Monuments**
1,378 monuments and two examples of former monuments (not included in the count).
 - S. Pyongan Monuments**
1,711 monuments.
 - Pyongyang Monuments**
1,369 monuments and three future statue sites. There are also three examples of former
 - Rason Monuments**
127 monuments.
 - Ryanggang Monuments**
There are 521 extant monuments of various types. There are also five examples of former monuments

Main Military Folders

- Main places
 - [AccessDPRK 2023 PRO VERSION \(2025 Update\)](#)
#AccessDPRK is a mapping project and blog created by Jacob Bogle over the course of 7,650 hours which aims
 - DPRK Monuments**
There are 12,384 extant monuments and three future monument sites located as of May 2025.
 - DPRK Military**
This folder contains 13,523 defense related sites.
 - Airports/Airbases**
North Korea currently has 152 identified airfields, highway strips, and heliports - including former
 - DMZ**
1,910 fortifications, gun lines, AAA sites and other DMZ related locations. Most locations are within 5
 - DMZ Road Blocks**
203 additional road block/tank trap positions in and around the DMZ. This is part of the #AccessDPRK
 - Chagang Military**
Folder contains 220 items and is divided into 10 sub folders.
 - Kangwon Military**
This folder has 1,755 sites and is divided into 22 specific item categories.
 - N. Hamgyong Military**
This folder contains 698 items and is divided into 20 item-specific folders.
 - S. Hamgyong Military**
This section contains 892 items and is divided into 21 item specific folders.
 - N. Hwanghae Military**
This folder contains 2,338 items and is sub-divided into 21 item specific folders.
 - S. Hwanghae Military**
This folder contains 1,387 items and is sub-divided into 19 item specific folders.
 - N. Pyongan Military**
This folder contains 1,020 sites and is sub-divided into 24 item specific folders.
 - S. Pyongan Military**
This folder contains 1,686 items and is sub-divided into 23 item specific folders.
 - Pyongyang Military**
This folder contains 1,027 items and is sub-divided into 20 item specific folders.
 - Rason Military**
There are 55 military locations. Rason is defended by the Korean Peoples' Army VI Corps.
 - Ryanggang Military**
This folder has 181 items and is divided into 10 folders.

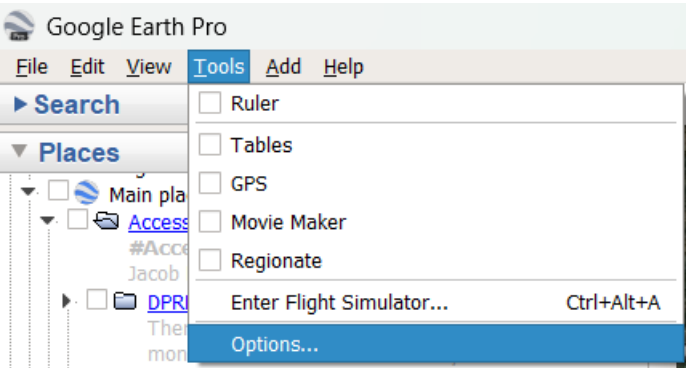
Main Domestic Folders

- Main places
 - [AccessDPRK 2023 PRO VERSION \(2025 Update\)](#)
#AccessDPRK is a mapping project and blog created by Jacob Bogle over the course of 7,650 hours which aims
 - DPRK Monuments**
There are 12,384 extant monuments and three future monument sites located as of May 2025.
 - DPRK Military**
This folder contains 13,523 defense related sites.
 - Domestic & Economic**
This folder contains 38,308 items.
 - Chagang Domestic**
This section 2,255 items divided into 32 item specific folders.
 - Kangwon Domestic**
This section has 2,847 items and is divided into 41 item-specific folders.
 - N. Hamgyong Domestic**
This section has 3,437 items and is sub-divided into 40 item specific folders.
 - S. Hamgyong Domestic**
This section has 4,999 items and is divided into 38 main, item-specific folders.
 - N. Hwanghae Domestic**
This section has 4,572 items and is sub-divided into 36 item specific folders.
 - S. Hwanghae Domestic**
This section has 4,556 items and has been sub-divided into 34 item specific folders.
 - N. Pyongan Domestic**
This section has 4,208 items and is sub-divided into 42 item specific folders.
 - S. Pyongan Domestic**
This has 5,307 items and is divided into 41 item specific folders.
 - Pyongyang Domestic**
This section has 3,975 items divided into 50 item specific folders.
 - Rason Domestic**
This section has 439 items and is sub-divided into 28 item specific folders.
 - Ryanggang Domestic**
1,713 unique places (Mt. Paektu military sites aren't included in this count as they're included in the main

Main Nationwide Folders

- Main places
 - [AccessDPRK 2023 PRO VERSION \(2025 Update\)](#)
#AccessDPRK is a mapping project and blog created by Jacob Bogle over the course of 7,650 hours which aims
 - DPRK Monuments**
There are 12,384 extant monuments and three future monument sites located as of May 2025.
 - DPRK Military**
This folder contains 13,523 defense related sites.
 - Domestic & Economic**
This folder contains 38,308 items.
 - Specific Nationwide Files**
This folder contains 6,671 unique items and is broken down into: historic sites, gas stations, missile bases,
 - Historic Sites**
462 sites. Includes temples, pavilions, walled cities, segments of defensive walls, and other sites that
 - DPRK Gas Stations**
201 identifiable gas stations as of November 2025.
 - DPRK Prisons**
76 facilities, with a further 372 sites. Includes known concentration camps, regional prisons, and smaller
 - DPRK Missile Bases & UGFs**
358 sites of interest: 22 possible ballistic missile bases with 337 detailed sites within.
 - Children's Traffic Parks**
171 parks. These are small parks that often resemble city squares/blocks. They began to be
 - Lighthouses**
83 sites. Most of these were constructed by the Japanese during their occupation of the country.
 - COVID Quarantine Centers**
This is a collection of 127 suspected quarantine centers built during the COVID-19 pandemic. For
 - NK Islands**
142 named islands.
 - Border crossings**
27 current & former border crossing points.
 - National Fence**
2,381.6 miles of identifiable fencing and 4,668 marked guard posts and garrisons. The fence paths

If Google Earth still feels sluggish, then you may need to increase the memory its using and clear the cache.



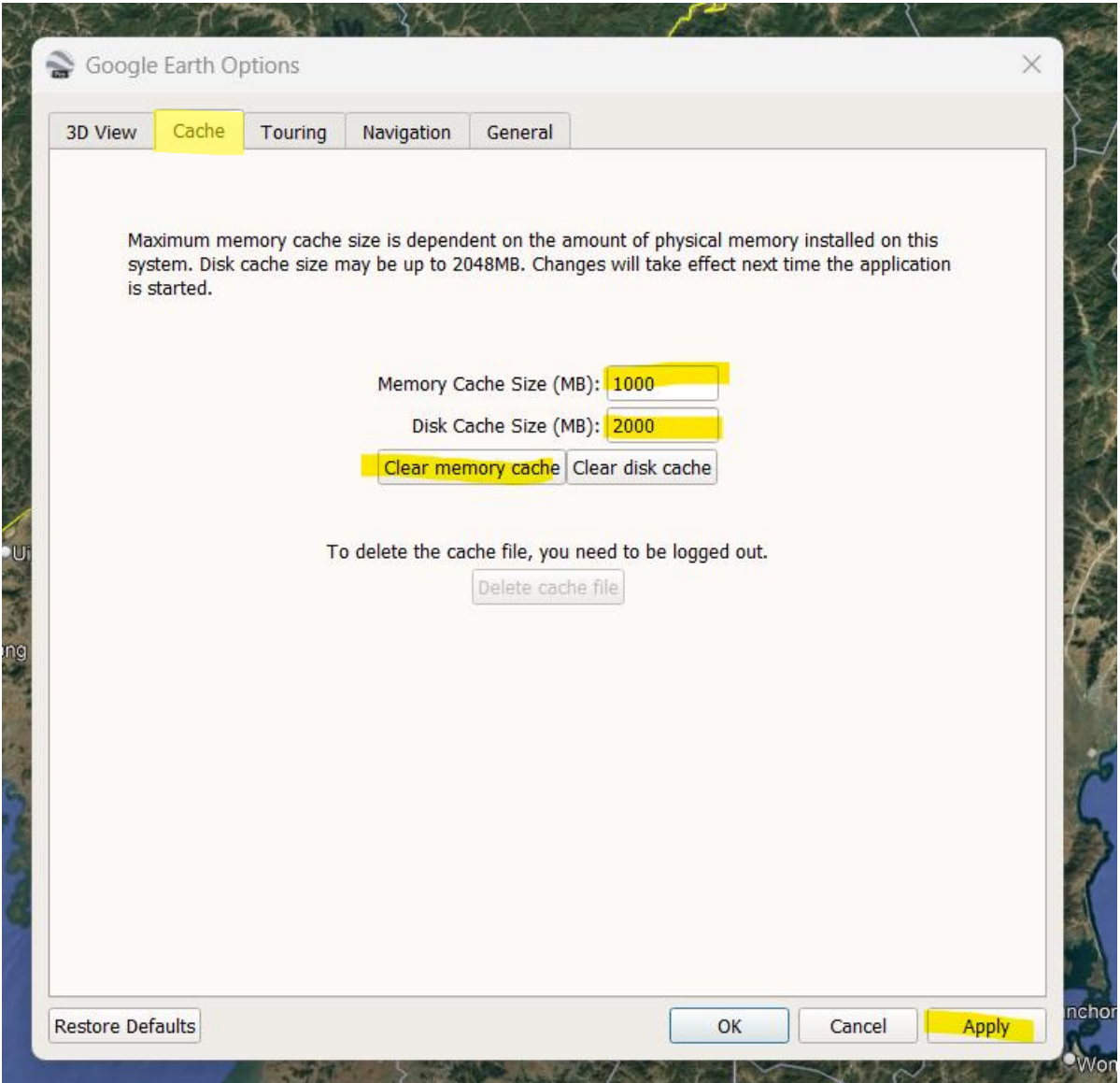
Step One: Go to “Tools” and click “Options”

Step Two: increase the memory fields to 1000 and 2000 as shown.

Step Three: Click “Clear memory cache”

Step Four: Click “Apply”

You should close Google Earth and then reopen it after this.



Once you have become comfortable with how your computer is functioning, you can also display multiple types of placemarks within the same province in order to show all of the items mapped within it.

To accomplish this, pick each of the subfolders you would like to display for a specific province.

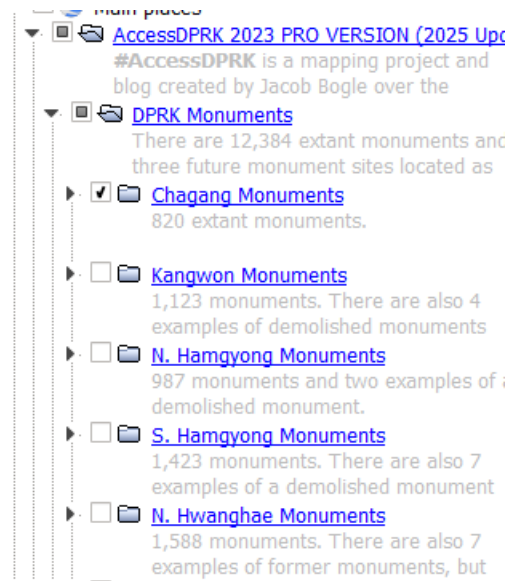
Such as Monuments > Chagang

Military > Chagang

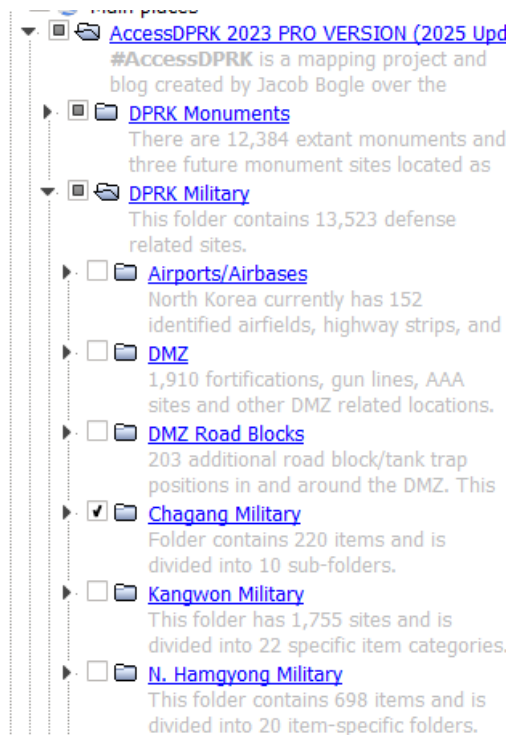
Domestic > Chagang

Specific Nationwide > Missile Bases (and whichever other ones from this folder you want to see)

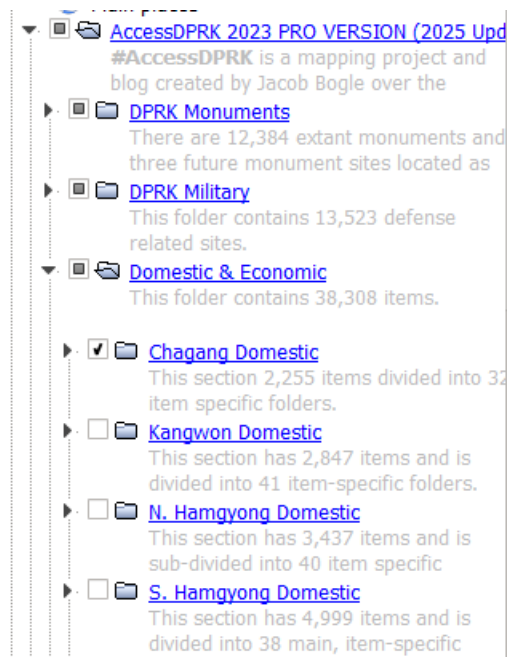
Check Chagang Monuments



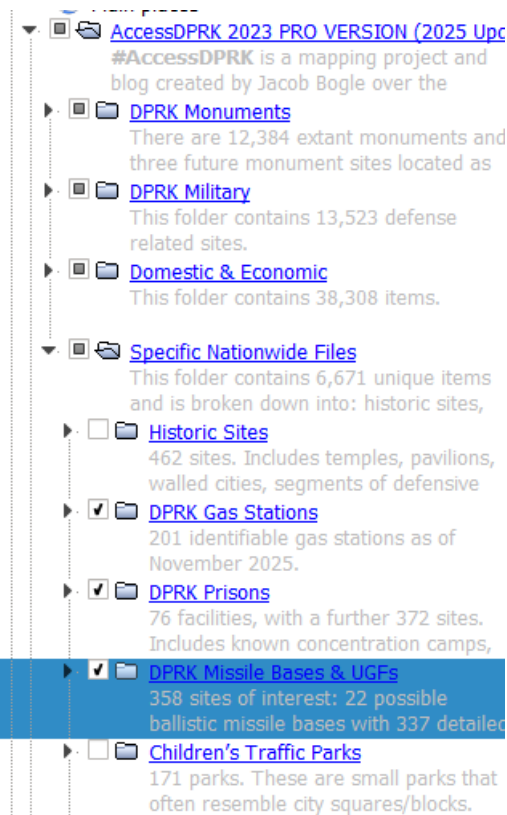
Check Chagang Military

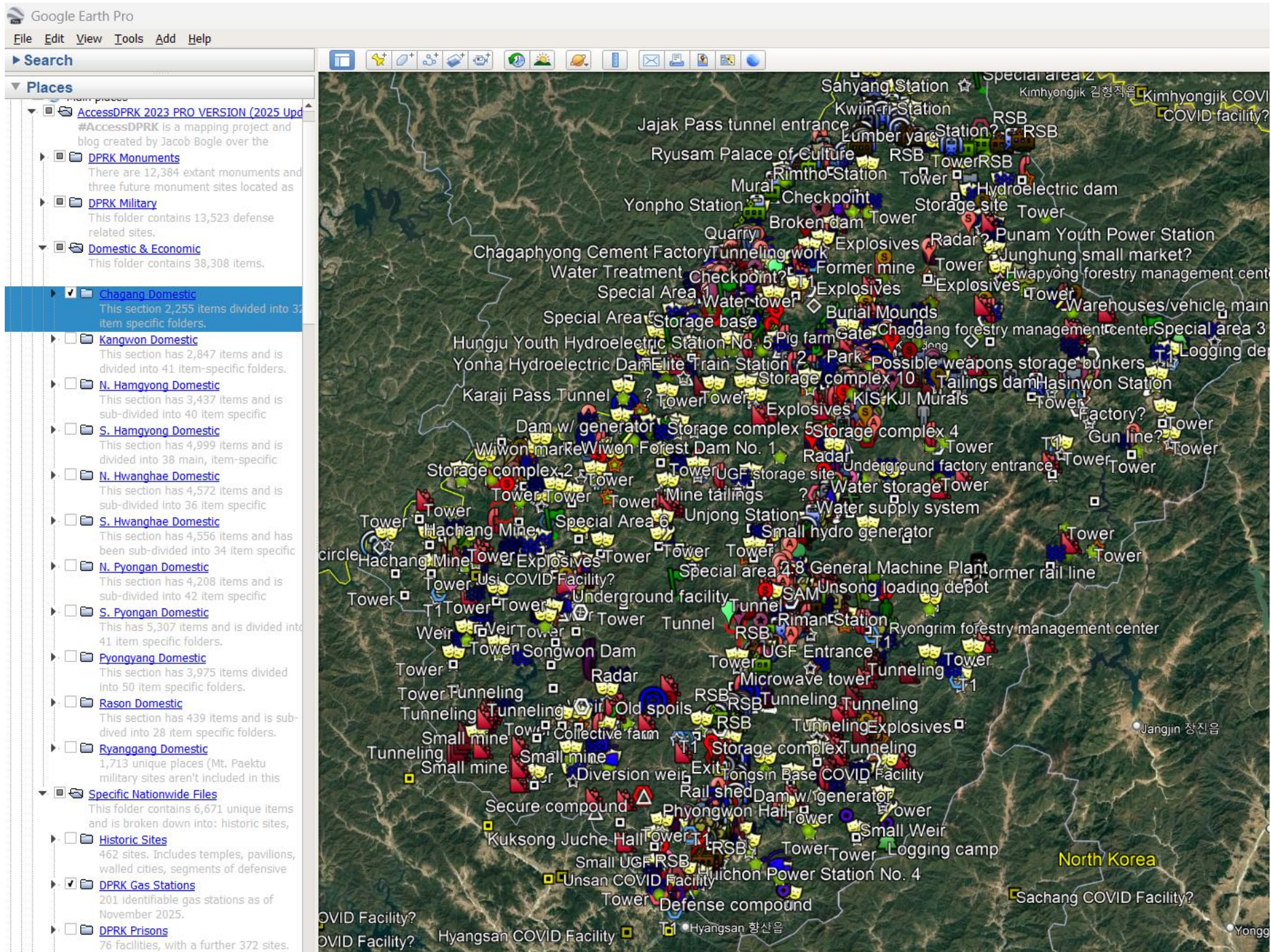


Check Chagang Domestic



Check which topics you want to see for the province within the “Nationwide” folder





Your screen will then look something like this.

Then you can zoom in and explore the locations more closely.