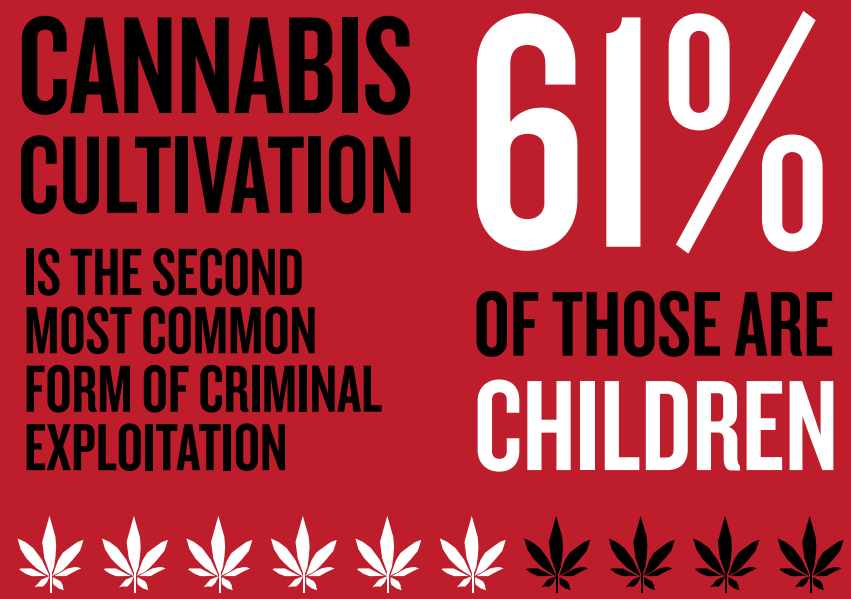
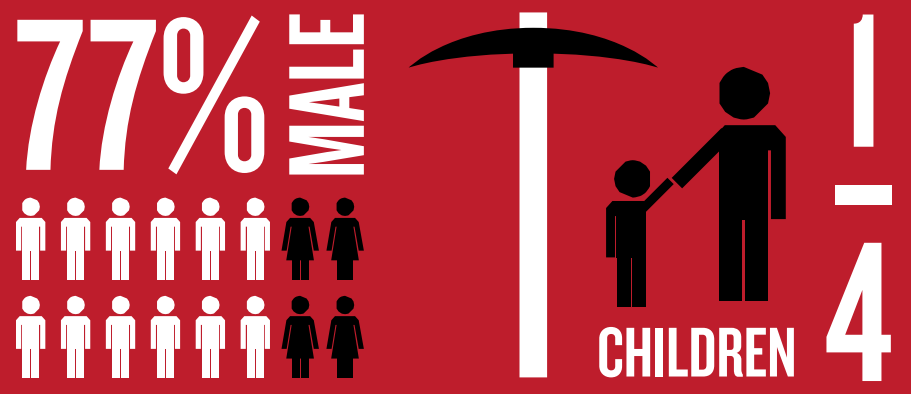
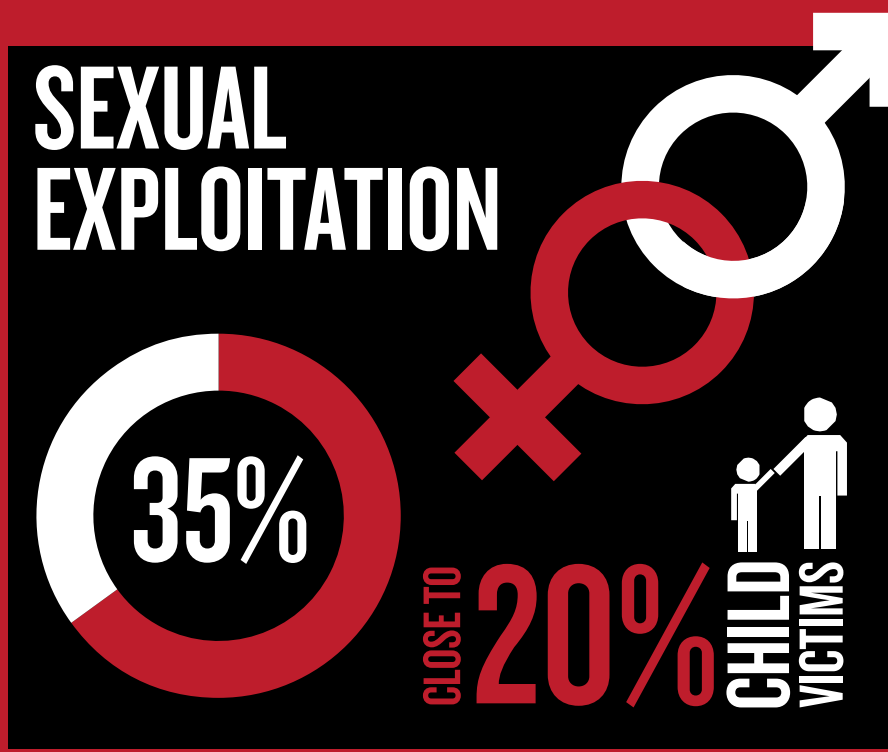


HELP FREE THE UK FROM MODERN SLAVERY

Modern Slavery is the illegal exploitation of people for personal or commercial gain. Victims* are trapped in servitude, which they were deceived or coerced into, and feel they cannot leave.

MODERN SLAVERY INCLUDES:



WHERE VICTIMS COMMONLY COME FROM



Slavery is closer than you think. It happens all over the world including the UK. Find out more at modernslavery.co.uk or to seek help or report slavery call the helpline.

0800 0121 700

Calls are free from landlines and most mobile networks

Figures are drawn from National Referral mechanism statistics 2014. Common areas of labour exploitation and criminal exploitation information taken from NCA Strategic Assessment on the Nature and Scale of Human Trafficking 2013.

*victims' referred to above are potential victims identified and referred to the National Referral Mechanism, who are then subject to fuller assessment.

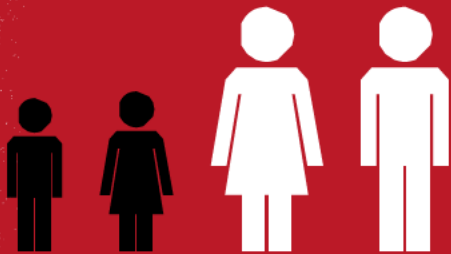
DO YOU THINK YOU HAVE COME INTO CONTACT WITH A VICTIM OF MODERN SLAVERY?

It is important to notify the Government to help build a clearer picture of this hidden crime.

Follow the steps below to help tackle modern slavery and ensure that victims who want it can get the right support.

IF YOU THINK THE VICTIM IS UNDER 18

You should complete an **NRM form**



IF YOU THINK THE VICTIM IS OVER 18

If you want to receive government support and are happy to be identified you should complete an **NRM form**

If they would like to remain **anonymous** you should complete a **duty to notify form (MS1 form)**



Visit **gov.uk** and search '**duty to notify**' for further details and to download NRM and MS1 forms and guidance.

In addition to the above reporting process, if the person you have encountered is in danger, you should call the police as normal.

**MODERN
SLAVERY**

modernslavery.co.uk