

Mouse Anti-CD147/EMMPRIN/Neurothelin [8D6]: MC0643, MC0643RTU7

Intended Use: For Research Use Only

Description: This antibody recognizes extracellular epitope 2 within the N-terminal Ig domain of human CD147. It is expressed more intensely on thymocytes than on mature peripheral blood T cells. CD147 is important in spermatogenesis, embryo implantation, neural network formation, and tumor progression. It stimulates the production of interstitial collagenase, gelatinase A, stromelysin-1 and various metalloproteinases (MMPs) by fibroblasts. These enzymes are important factors in cancer invasion and metastasis.

Specifications:

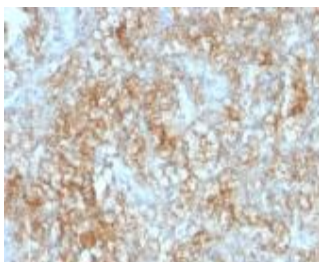
Clone: 8D6
 Source: Mouse
 Isotype: IgG1k
 Reactivity: Human
 Immunogen: Human T cell line Molt 13
 Localization: Membrane
 Formulation: Antibody in PBS pH7.4, containing BSA and $\leq 0.09\%$ sodium azide (NaN₃)
 Storage: Store at 2°- 8°C
 Applications: IHC, Flow Cyt., ICC/IF
 Package:

Description	Catalog No.	Size
CD147/EMMPRIN/Neurothelin Concentrated	MC0643	1 ml
CD147/EMMPRIN/Neurothelin Prediluted	MC0643RTU7	7 ml

IHC Procedure*:

Positive Control Tissue: Colon cancer, placenta
 Concentrated Dilution: 50-200
 Pretreatment: Tris EDTA pH9.0, 15 minutes using Pressure Cooker, or 30-60 minutes using water bath at 95°-99°C
 Incubation Time and Temp: 30-60 minutes @ RT
 Detection: Refer to the detection system manual

* Result should be confirmed by an established diagnostic procedure.



FFPE human RCC stained with anti-CD147 using DAB

References:

1. Impact of Minocycline on Extracellular Matrix Metalloproteinase Inducer, a Factor Implicated in Multiple Sclerosis Immunopathogenesis. Hahn JN, et al. J Immunol 197:3850-3860, 2016.
2. An epitope-specific novel anti-EMMPRIN polyclonal antibody inhibits tumor progression. Walter M, et al. Oncoimmunology 5:e1078056, 2016.
3. Propranolol induced G0/G1/S phase arrest and apoptosis in melanoma cells via AKT/MAPK pathway. Zhou C, et al. Oncotarget 7:68314-68327, 2016.

Doc. 100-MC0643
Rev. A