

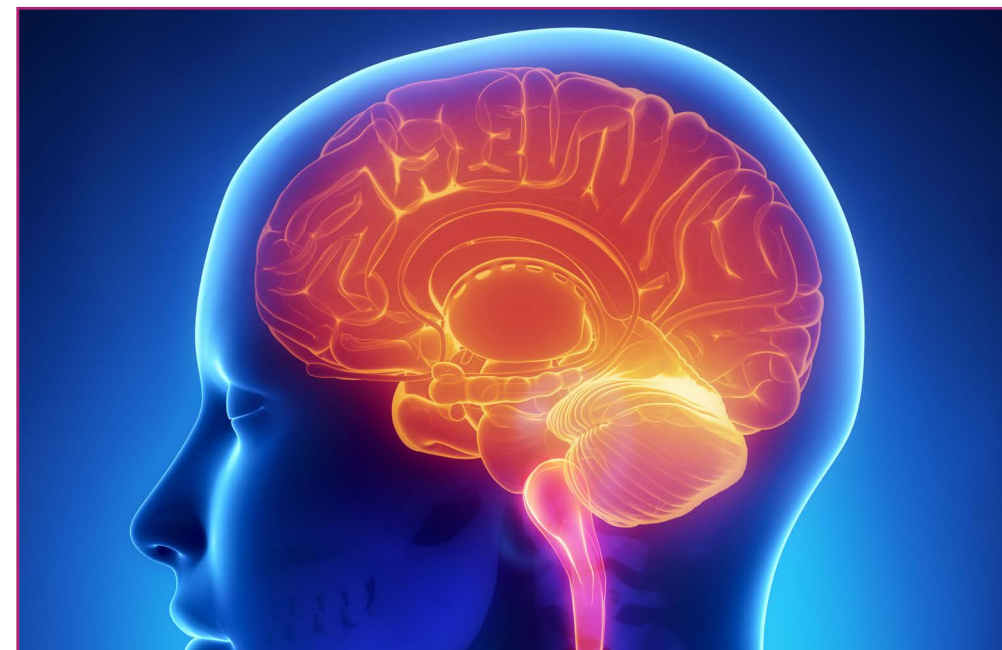
**Progressive Supranuclear Palsy**  
www.pspassociation.org.uk Tel: 0300 0110 122

**MSA (Multisystem Atrophy)**  
www.msatrust.org.uk Tel: 0333 323 4591

**Huntingdon's Disease Association**  
www.hda.org.uk Tel: 0151 331 5444

**Worcestershire Association of Carers**  
www.carersworcs.org.uk Tel: 0300 012 4272

**Parkinsons UK**  
www.parkinsons.org.uk Tel: 0808 800 0303



### Do you have a concern, complaint or comment?

Contact: Patient Relations Team, Herefordshire and Worcestershire Health and Care NHS Trust 2 Kings Court, Charles Hastings Way, Worcester. WR5 1JR Tel: **01905 681517** Email: **Whcnhs.pals@nhs.net**

### Do you have a communication or information support need?

If so please contact the person who gave you this leaflet so that those needs can be recorded and responded to.

### Do you need to know about accessibility?

Read our detailed guides at  
[www.AccessAble.co.uk](http://www.AccessAble.co.uk)



Do you get stressed,  
anxious or have low  
mood?

Visit [www.hacw.nhs.uk/healthyminds](http://www.hacw.nhs.uk/healthyminds) to  
find out more or call **0300 302 1313**.

## Worcestershire Integrated Neurology Service

Information leaflet

The Worcestershire Integrated Neurology Service supports and enables people with a neurological condition. It provides access to a range of rehabilitation, advice and support to meet continuing and changing needs.

### **The Service aims to:**

Provide a person-centred approach to create care plans that reflect the goals and wishes of individuals, to maximise quality of life and independence. Provide expert advice, information and support for people affected by a neurological condition. Collaborate with other professionals to achieve coordinated care and the best possible outcome.

### **Who are WINS?**

The WINS team includes:

- Epilepsy Specialist Nurses
- Multiple Sclerosis Specialist Nurses
- Parkinson's Disease Specialist Nurses
- Specialist Neurology Nurses
- Specialist Speech and Language Therapist
- Advanced Clinical Practitioner
- Specialist Neurological Physiotherapists
- Specialist Neurological and Acquired Brain Injury Occupational Therapists
- Clinical Neuropsychologist
- Clinical Psychologists
- Rehabilitation Assistants
- Team Administrators

Website link: [www.hacw.nhs.uk](http://www.hacw.nhs.uk). Please search for teams for more information

### **Contact Us:**

Normal Office Hours:

Monday to Friday: 8.30am to 4.30pm (Answer phone available when staff are out of the office). Please note that telephone calls may not be dealt with for up to 72 hours.

If you have any urgent issues or those not related to your neurological condition please contact your GP or 111/999.

### **Our teams and their contact details:**

#### **Acquired Brain Injury Team**

Tel: 01527 488108

WHCNHS.Acquiredbraininjuryteam@nhs.net

#### **Epilepsy Team**

Tel: 01386 502076 Email: WHCNHS.Epilepsynurses@nhs.net

#### **Multiple Sclerosis Team**

Tel: 01386 502516 Email: WHCNHS.MSNurses@nhs.net

#### **Parkinsons Team**

Tel: 01527 488172 Email: WHCNHS.parkinsonsnurses@nhs.net

#### **Specialist Neurology Nurses**

Tel: 01527 488125 Email: WHCNHS.Specialistneurologynurses@nhs.net

#### **Neurological Therapy Team**

Tel: 01527 488108 Email: WHCNHS.Neurotherapies@nhs.net

#### **Spasticity Management Team**

Tel: 01386 502417 Email: WHCNHS.Spasticityneuroclinic@nhs.net

### **Other useful contacts:**

#### **Headway Worcester**

<https://headwayworcestershire.org.uk> Tel: 01905 729729

Headway Birmingham & Solihull

<https://www.headway-bs.org.uk> Tel: 0121 457 7541

#### **Stroke Association**

<https://www.headway-bs.org.uk> Tel: 0121 457 7541

**MS Trust:** [www.mstrust.org.uk](http://www.mstrust.org.uk) Tel: 0800 032 38 39

Shift MS [www.shift.ms](http://www.shift.ms)

MS Society [www.mssociety.org.uk](http://www.mssociety.org.uk) Tel: 0808 800 8000

**Dial** (Disability Information Advice Line) [www.dialsworcs.org.uk](http://www.dialsworcs.org.uk)

Tel: 01905 27790

#### **Epilepsy Action**

<https://www.epilepsy.org.uk> Tel: 0808 800 5050)

#### **Epilepsy Society**

<https://epilepsysociety.org.uk> Tel: 01494 601 400

#### **Epilepsy Research**

<https://epilepsyresearch.org.uk> Tel: 020 3096 7887)

#### **Motor Neurone Disease Association**

[www.mndassociation.org](http://www.mndassociation.org) Tel: 0808 802 6262