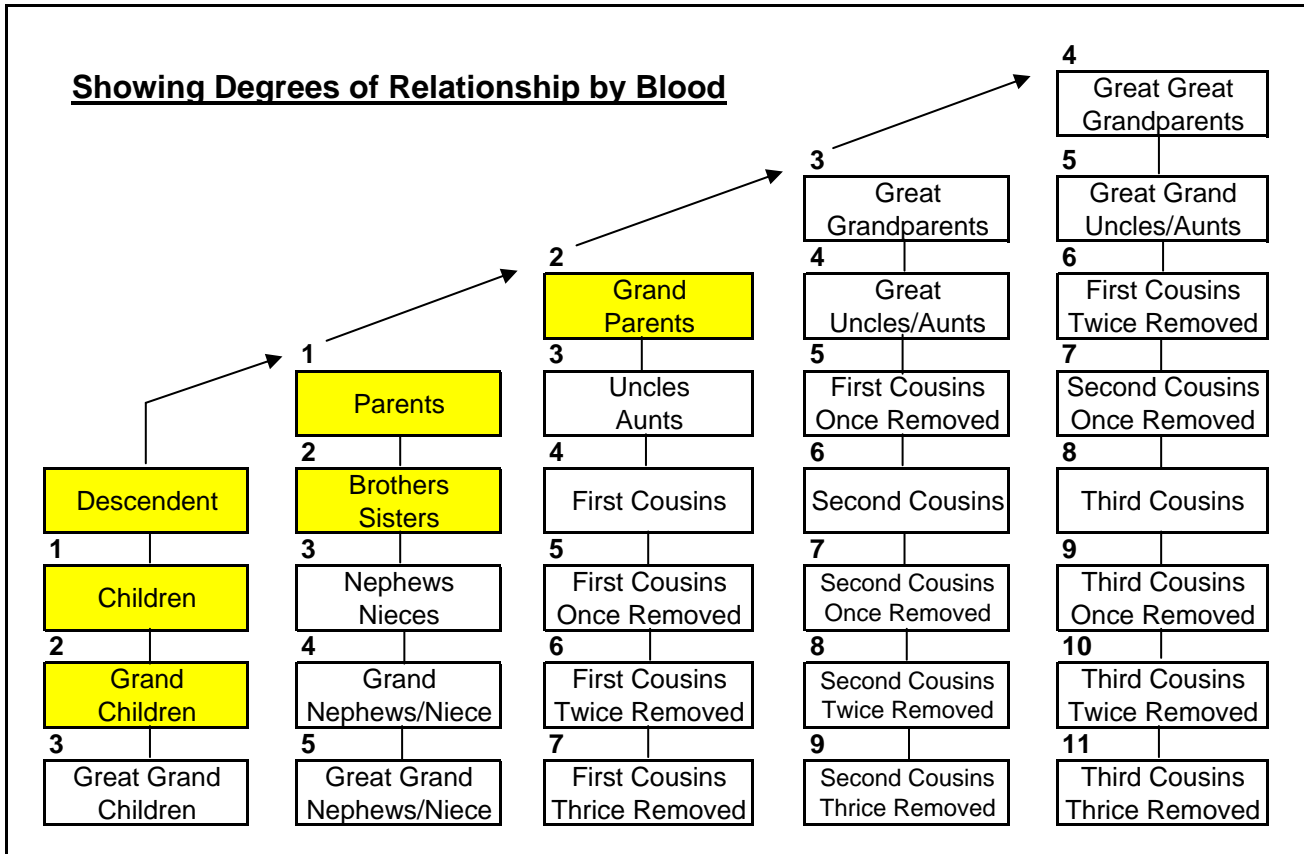


Table of Consanguinity



The shaded boxes indicate those not allowed to serve pursuant to C.R.S. 1-6-101. Definitions - qualifications for elections judges - student election judges - legislative declaration. (7)(c)(VI) They are not a member of the immediate family, related by blood or marriage to the second degree, of a candidate whose name appears on the ballot in the precinct that they are appointed to serve; C.R.S. 1-7-108. Requirements of watchers. (2) Neither candidates nor members of their immediate families by blood or marriage to the second degree may be poll watchers for that candidate.