



The Nelson & Albemarle Railroad
ESMONT-ALBERENE QUARRY LINE TRAIL



Alberene Quarry historic rail car



Alberene Quarry - historic



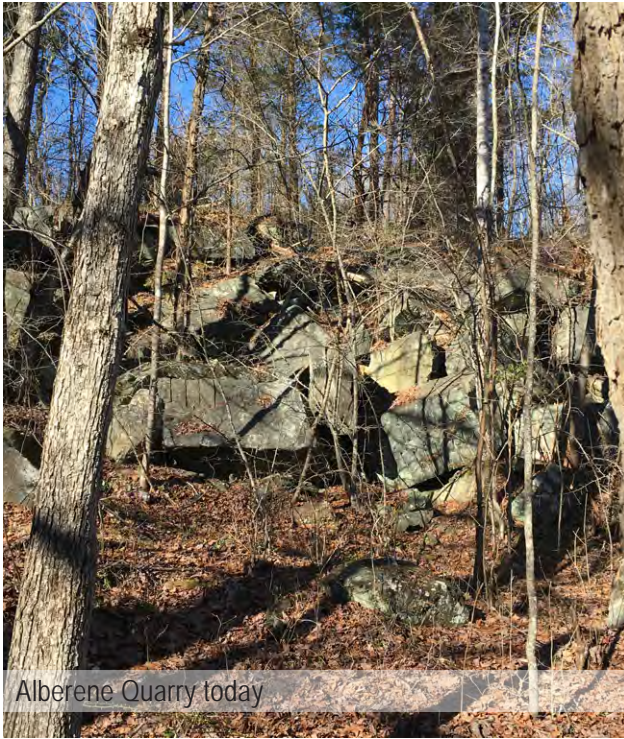
Alberene Quarry - historic



Alberene Quarry - historic



Alberene Quarry swimming



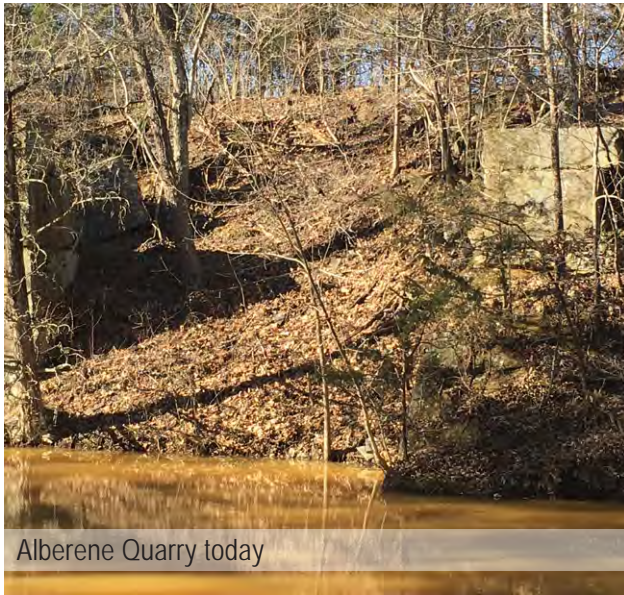
Alberene Quarry today



Alberene Quarry today



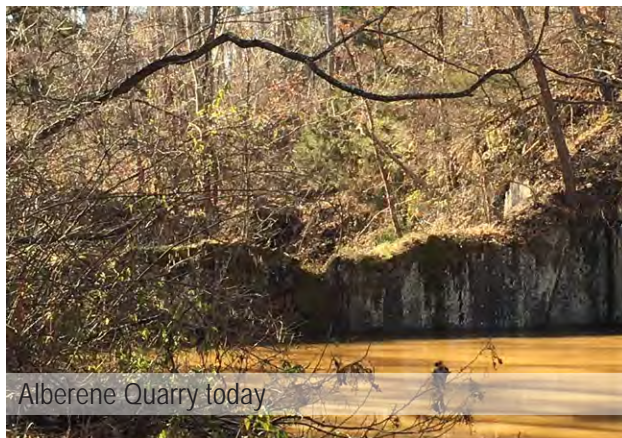
Alberene Quarry today



Alberene Quarry today



Alberene Quarry today



Alberene Quarry today



Alberene Quarry today



Tallwood - 1908



Enniscorthy - historic



Esmont Farm - historic



Tallwood - historic



Enniscorthy - current



Esmont Farm - current



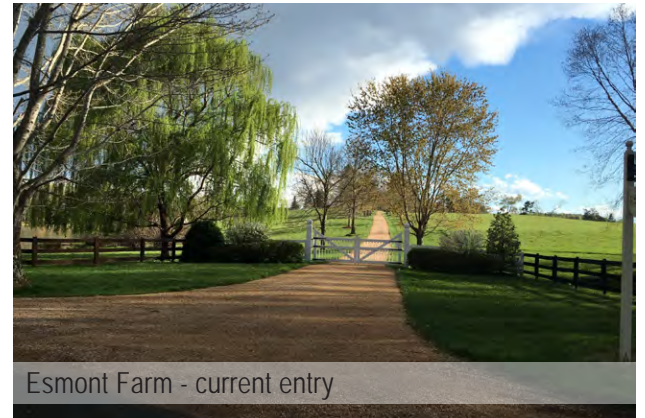
Tallwood - before renovation



Old Woodville Farm



Tallwood - current entry



Esmont Farm - current entry



Mountain Grove - historic



Edgemont Farm - historic



Guthrie Hall - historic



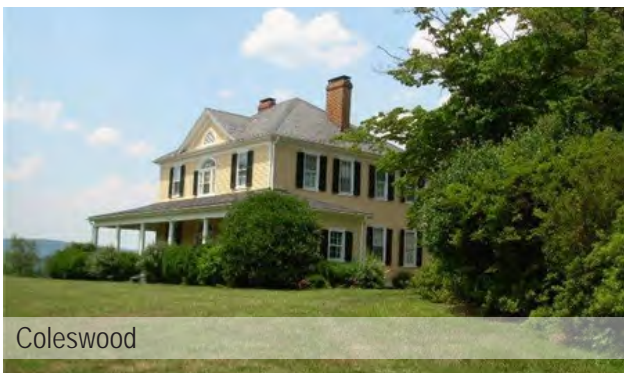
Mountain Grove - current



Edgemont Farm - historic



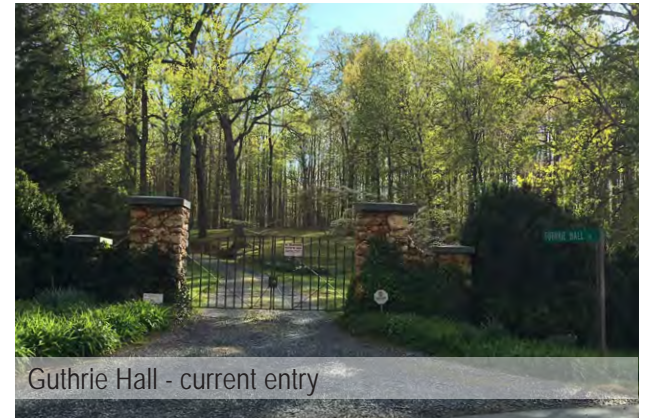
Guthrie Hall - current



Coleswood



Edgemont Farm - restored



Guthrie Hall - current entry



Nydrie Stud - historic



Nydrie Stud - current entry



Estouteville Estate - 1919



Nydrie Stud - current



Van Clief Cemetery



Alberene barn ruin



Nydrie Stud - current



Village of Esmont - quarry worker's house



Alberene barn ruin



Purvis Store - historic



Esmont bank and post office - historic



Esmont gas store - 1960s



Esmont gas store - current



Purvis Store - current



Rail line through the Village of Esmont - current
(Post office in background)



Esmont School



Esmont Depot - historic
**Proposed parking and trailhead



Esmont main street residence - current



Esmont Rail Line - historic



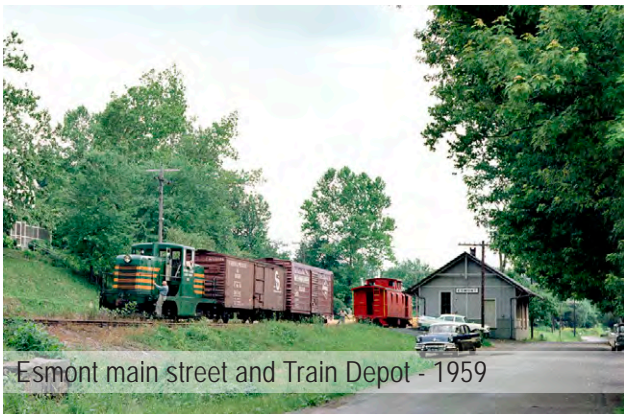
Esmont Rail Line - historic



Esmont Train Depot - historic
**Proposed parking and trailhead



Esmont hardware store - under renovation



Esmont main street and Train Depot - 1959



Esmont bank - renovated



Esmont main street residence - current



Stacked soapstone rail trestle



Rail bed - currently used as area trail



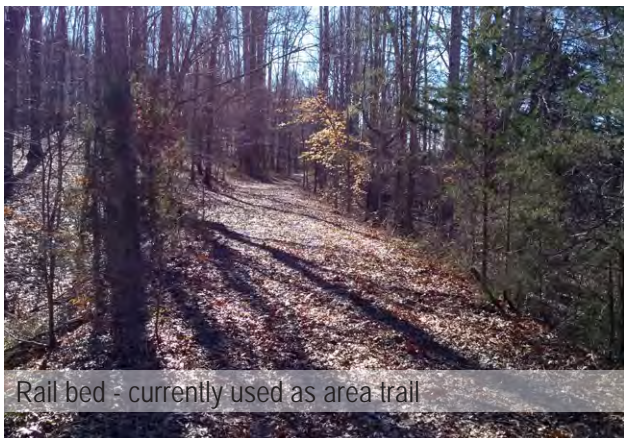
Stacked soapstone rail trestle



Stacked soapstone rail trestle - detail



Stacked soapstone rail trestle - detail



Rail bed - currently used as area trail



Stacked soapstone rail trestle



Esmont Farm rail trestle



Green Mountain Road - scenic area views



Esmont rail bed - currently used as area trail



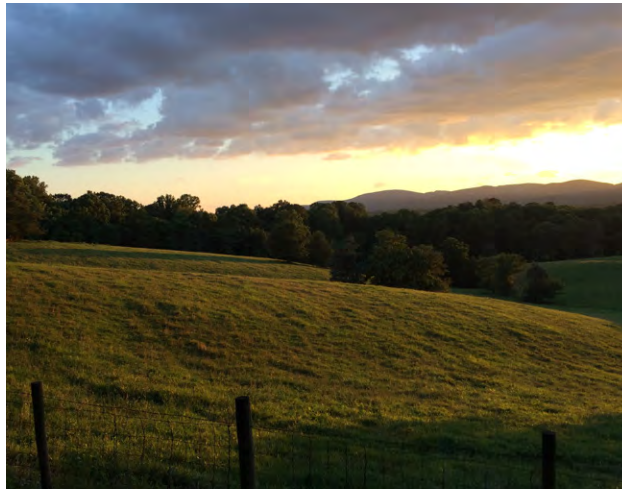
Fry's Path - scenic area views



Fry's Path - scenic area views



Green Mountain Road - scenic area views



Fry's Path - scenic area views



Fry's Path - scenic area views