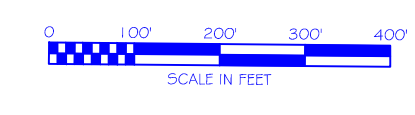
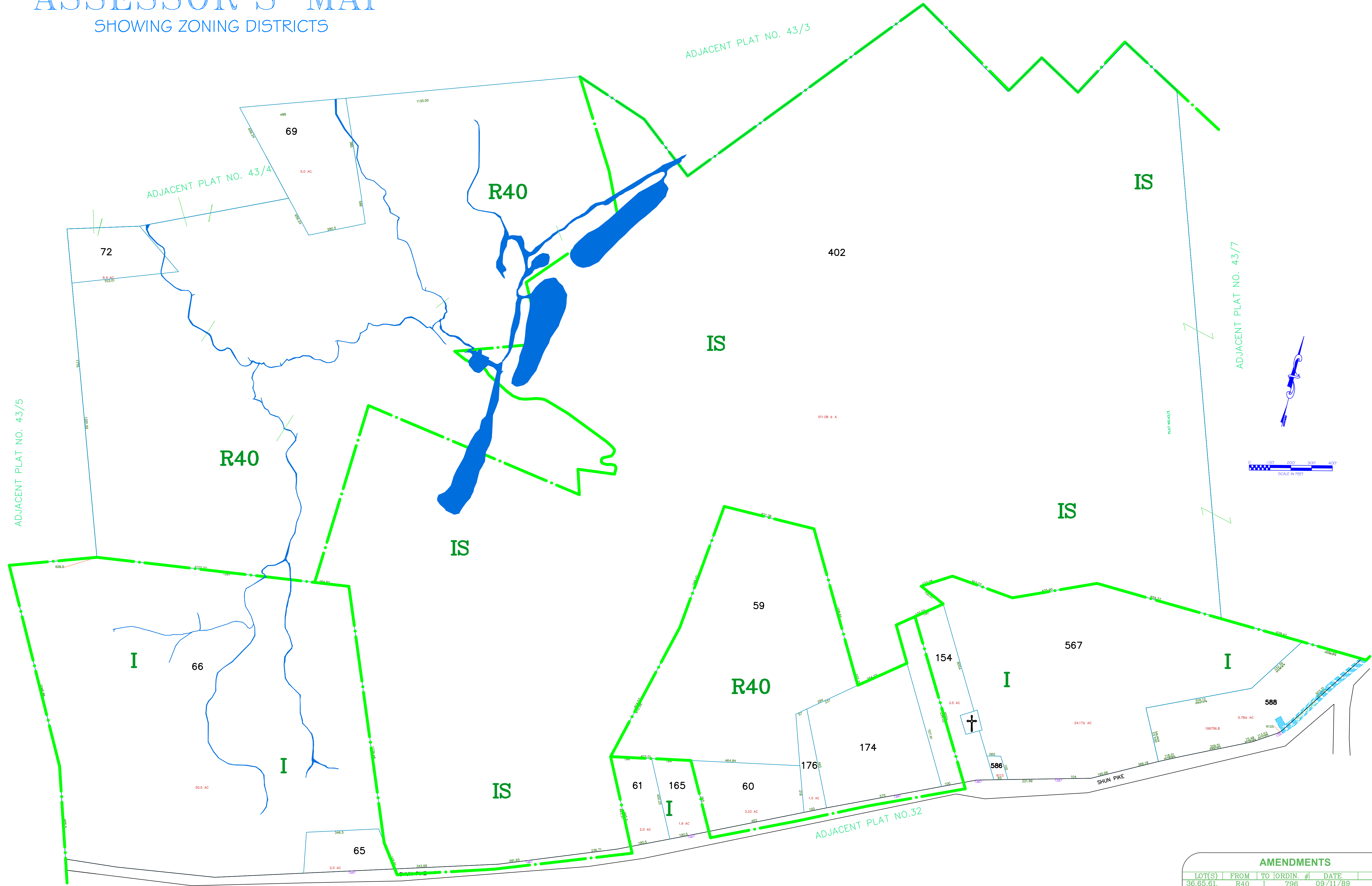


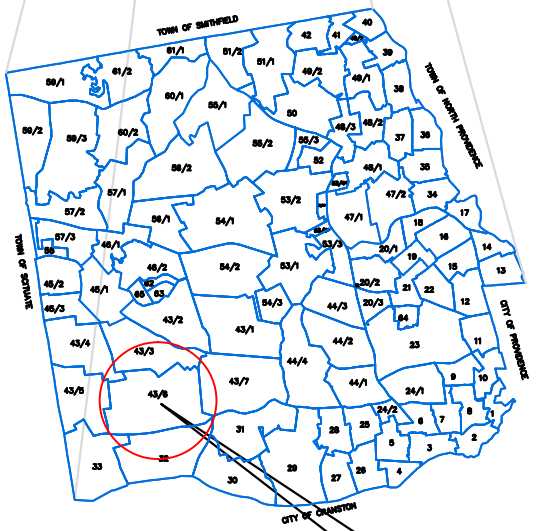
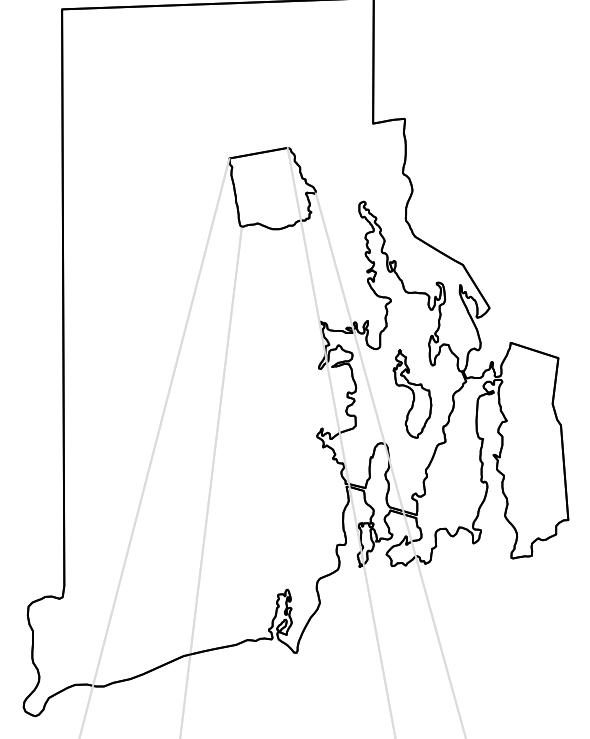
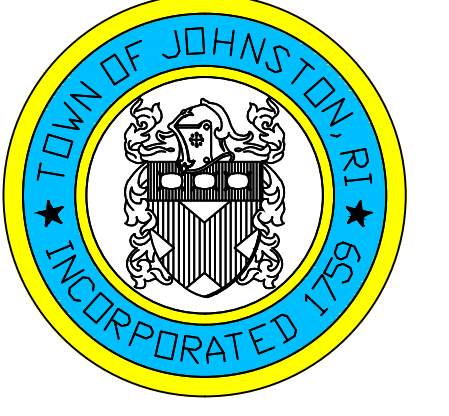
ASSESSOR'S MAP

SHOWING ZONING DISTRICTS



Assessor's Plat Number
43/6

STATE OF RHODE ISLAND
TOWN OF JOHNSTON
PROVIDENCE COUNTY
INCORPORATED 1759
ASSESSOR'S OFFICE
1385 HARTFORD AVENUE
JOHNSTON, RHODE ISLAND
02919



PLAT INDEX
AREA

Scale: 1:225
Revised By: Benjamin Ng
Last updated: January 04, 2016
Date printed: January 04, 2016

AMENDMENTS					
LOT(S)	FROM	TO	ORDIN #	DATE	NOTE
36,65,61	R40	I	796	09/11/89	-
154,165	R40	I	796	09/11/89	-

For copies of plat maps, please go to the DPW at 100 Irons Avenue Johnston Rhode Island. Thank you.

NOTE: This map was prepared for the use of the Town of Johnston for assessment and illustrative purposes only. It does not represent a survey of the premises. No liability is assumed as to the sufficiency or accuracy of the data delineated hereon.