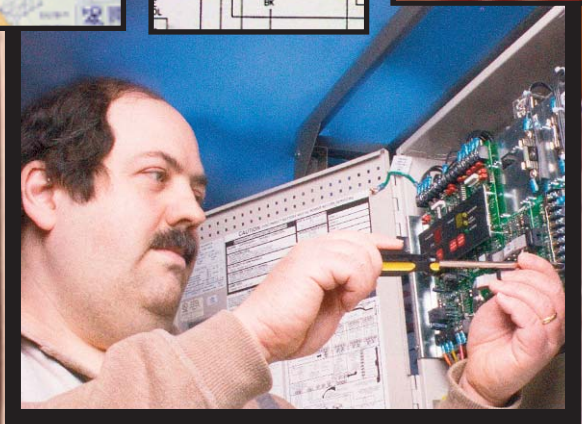
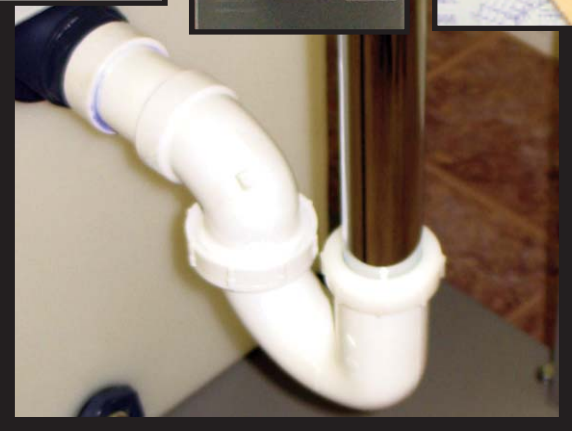
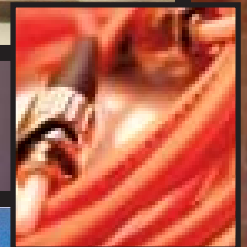
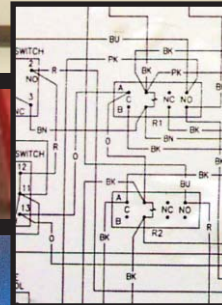
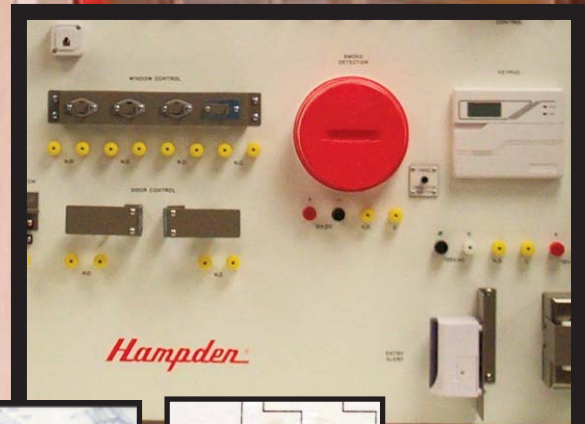
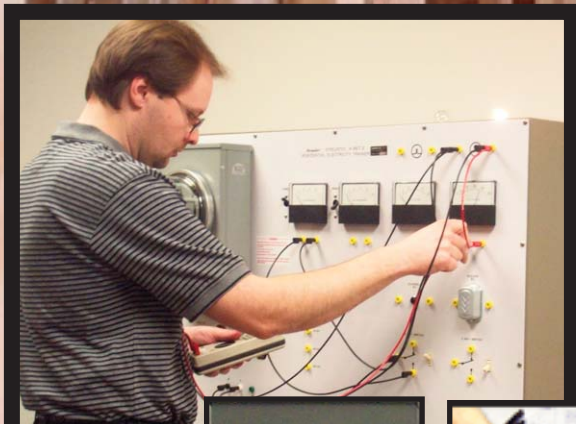


# CONSTRUCTION TRADES TECHNOLOGY



**Hampden®**  
ENGINEERING CORPORATION



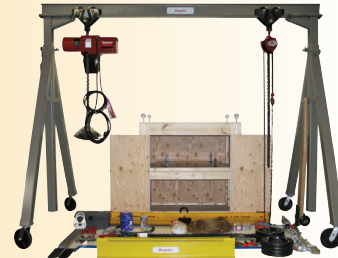


*Train your students on standard equipment  
found in both residential dwellings and commercial establishments*

## PLUMBING AND PIPING TRAINERS

### H-RIG-1C Rigging Systems Trainer

The Hampden **Model H-RIG-1C** Rigging Systems Trainer is designed to teach the techniques of safely moving loads of various shapes, sizes and types. The Hampden Rigging System Trainer contains a variety of lifting and moving devices to allow the student to learn the proper methods of moving loads safely.



Model H-RIG-1C

### H-PPST-1 Piping/Pipefitters System Trainer

The Hampden **Model H-PPST-1** Piping/ Pipefitters System Trainer provides the student with a hands on trainer for piping.

The student will learn the necessary methods of connecting and running metal/iron piping, plastic piping, copper tubing, and hydraulic hose.



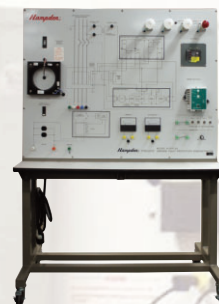
Model H-PPST-1

## ELECTRICAL CIRCUIT TRAINERS

### H-GFP-2A Ground Fault Protection Demo

The **Model H-GFP-2A** Ground Fault Protection Demonstrator provides the sensors, monitors, and protection devices for learning the meaning of ground fault currents and the code requirements for ground fault protection.

The **Model H-GFP-2A** Ground Fault Protection Demonstrator contains all of the facilities required to simulate and monitor ground fault currents and the means of providing ground fault protection on both 3Ø feeder circuits and 1Ø branch circuits.



Model H-GFP-2A

### H-RET-2 Residential Electricity Trainer

The Hampden **Model H-RET-2** Residential Electricity Trainer consists of electrical components and instrumentation for demonstration and practical exercises in electrical circuits and measurements.



Model H-RET-2

### H-MCI-1000-WSB-1 Wiring Service Board

The **Model H-MCI-1000-WSB-1** Wiring Service Board Trainer is ideal for learning wiring skills in Electrical Shops with limited space.

The following manuals are furnished with the trainer: The National Electrical Code, Blue Print Reading, and Instructor's Guide.

The Wiring Service Board Trainer consists an assortment of mounted boxes, fixtures and accessories.



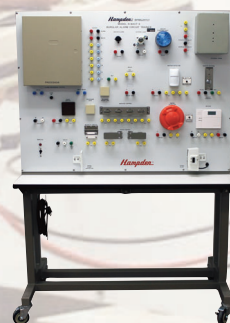
Model H-MCI-1000-WSB-1

### H-BACT-3 Security Alarm Circuits Trainer

The **Model H-BACT-3 Security Alarm Circuits Trainer** contains all of the actual components found in standard residential and industrial security systems. The unit provides the student with experience in designing, wiring, checking out, and troubleshooting burglar alarm circuits.

All of the sensing, alarm, and control components are mounted on the face of the Hampden **Model H-BACT-3**, where their wiring terminates in heavy-duty binding posts.

The student uses banana-plug leads (provided) to interconnect the components into operating security systems.



Model H-BACT-3



Also included with the **Model H-MCI-1000-WSB-1** is "Get Wired" computer software with topics such as: Home Electricity Basics, Adding New Wiring, High Tech Wiring, and The Data Highway.

## SUPERVISORY PANEL SYSTEMS

### H-RCSD-2B Residential Remote Control Switching Demonstrator

The Hampden **Model H-RCSD-2B** Residential Remote Control Switching Demonstrator provides a complete trainer showing a state-of-the-art home wiring system via programmed or manual remote control of lighting and appliances.

The **Model H-RCSD-2B** is based on the Lutron 'Caseta Home Controls' using the various Caseta Smart Bridge Components designed to simulate a residential house wiring system including a complete comprehensive training program.



Model H-RCSD-2B

### H-RCSD-3B Residential/Commercial Remote Control Switching Demonstrator

#### Model H-RCSD-3B

Residential/Commercial Remote Control Switching Demonstrator provides a complete trainer showing a state-of-the-art building wiring system control of lighting and appliances via programmed or manual remote. The **Model H-RCSD-3B** is based on the LonWorks Control System using the various Building Automation Components designed to simulate a residential/commercial wiring system, including a complete comprehensive training program. These devices freely exchange operating system information utilizing an internally accepted and Lon Mar Interoperability Association controlled open protocol.



Model H-RCSD-3B

### H-RCSD-4 Home Audio, Video and Surveillance Control Wiring Demonstrator

The Hampden **Model H-RCSD-4** Home Audio, Video and Surveillance Control Wiring Demonstrator provides a complete trainer showing a state-of-the-art home wiring system.

The Hampden **Model H-RCSD-4** Home Audio, Video and Surveillance Control Wiring Demonstrator is based on Leviton® components and designed to simulate a modern high-tech residential wiring system. The system takes the student through the complete installation, from making connection to programming the controls. Instructor insertable faults are included to teach troubleshooting techniques and skills.



Model H-RCSD-4

### H-MFA-3C Fire Alarm Demonstrator

Hampden's **Model H-MFA-3C** is a fully functioning fire alarm system which can be utilized to present the student with a variety of common installation and operational features. The trainer is a composite of basic equipment usually associated with residential and commercial layouts. All components are securely mounted on a demonstration board and carefully arranged to allow maximum accessibility to both instructor and student. All sections are clearly labeled for easy identification.



Model H-MFA-3C

### H-EM-2D Emergency Lighting Demonstrator

Hampden's **Model H-EM-2D** demonstrator is a fully functioning emergency lighting system compactly arranged to present the student with some of the most common installation and operational features. The trainer is a composite of basic equipment usually associated with commercial and industrial layouts and typical of those encountered by the service technician. The **H-EM-2D** is capable of a number of configurations and is not strictly limited to the equipment supplied with the demonstrator.



Model H-EM-2D

### H-EH-2A Electric Heating Demonstrator

Hampden **Model H-EH-2A** Electric Heating Demonstrator contains various types of electric heaters and control devices that might be found in either home or industry. A variety of components allow for the application of electrical heating techniques of wiring, control, and operation of various types of electrical heating devices.



Model H-EH-2A ▶

### H-MCP-3A Clock Systems Demonstrator

Hampden **Model H-MCP-3A** Clock Demonstrator introduces the student to a variety of installation and operational features normally associated with an electronic master clock system. It is a complete fully functional clock system representative of the systems found in schools, hospitals, industrial and office applications.



Model H-MCP-3A ▶

**Standard Products...Designed to Meet Your Growing Needs!**



# TELECOMMUNICATIONS AND FIBER OPTICS

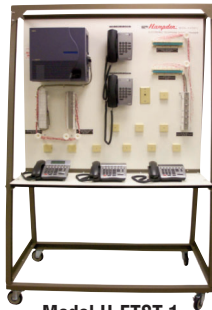
## H-ETST-1 Electronic Telephone System Trainer

The Hampden **MODEL H-ETST-1** Electronic Telephone System Trainer permits the student to move from classroom theory to hands-on troubleshooting with current technologies on state-of-the-art electronic telephone systems.

The **MODEL H-ETST-1** is provided with eight instructor switched faults with locking access cover and three non-switched faults.

Faults included:

- ▶ Opens
- ▶ Shorts
- ▶ Reveals
- ▶ Ground Noise
- ▶ Cross Wired
- ▶ Missed Connections



Model H-ETST-1

Courseware: *Telephone Repair Illustrated* by Stephen J. Bigelow which explores the fundamentals of signal transmission and switching along with many examples and problems.

Topics included:

- ◆ Telephone Technology
- ◆ Components
- ◆ Service Guidelines
- ◆ Using Test Equipment
- ◆ Wiring Installation and Repair
- ◆ Classical Telephones
- ◆ Electronic Telephones
- ◆ Answering Machines
- ◆ Cordless Phones
- ◆ Cellular Phones
- ◆ Troubleshooting Charts

## H-ETST-1 Accessories

Accessories that come with the Hampden **MODEL H-ETST-1** include the following items:

1. Punch Down Tool
2. Cable Splice Kit (Scissors and Knife)
3. Tone and Probe Kit
4. Spool - Cross Wire (1 twisted pair) Red/White
5. Spool (Box) CAT-3 Riser COMM 24 AWG 4 Pair 1000'
6. Tool Box
7. Bridging Clips for 66M1-50 Blocks
8. IPK Programming Manual
9. Telephone Line Cord with Fault
10. Hampden H-444-1 Multimeter
11. H-ETST-1 KUS Documents CD-ROM
12. Hampden Operating Instruction Manual

## HEE-TNC Telecommunication Network Cabling

Hampden's **MODEL HEE-TNC** Telecommunication Network Cabling course provides the tools and equipment needed to learn about modern PC network topologies.

The course—designed for secondary and post secondary students—overviews network topologies and investigates the basics of cabling with emphasis on: standards, grounding, preparing cable ends, testing cables and wireless networks.

Hands-on experiments include: pulling cables through a conduit, punching down cables to a 110 punch block, using a patch panel and installing common network connectors onto cables.



Model HEE-TNC

## HEE-FONT Fiber Optics Network Trainer

The Hampden **MODEL HEE-FONT** Fiber Optics Network Trainer is a versatile program for all age groups from early middle school through vocational school.

This system uses a modular approach which eliminates the long hours of curriculum research/preparation and equipment assembly.

The HEE-FONT is a stand-alone system—laser is not required.



Model HEE-FONT



Hampden is committed to providing industry-leading technology.

For the latest from Hampden, visit our home page at <http://www.hampden.com> or e-mail us at [sales@hampden.com](mailto:sales@hampden.com)

**Hampden®**  
ENGINEERING CORPORATION