

**Mouse Anti-GAB1 [1A7]: MC0100**

**Intended Use:** For Research Use Only

**Description:** GAB1 also known as GRB2-associated binder 1 and Growth factor receptor bound protein 2-associated protein 1, whose expression can be detected in the stomach as well as in the colon but is highly expressed in the placenta and renal pelvis. It is found in cytosol. This protein is an adapter protein that plays a role in intracellular signaling cascades triggered by activated receptor-type kinase and is also involved in signaling by the EGFR and the INSR.

**Specifications**

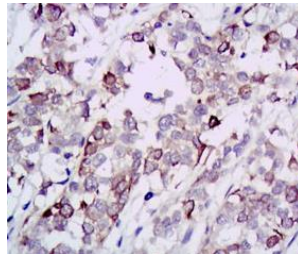
Clone: 1A7  
Source: Mouse  
Reactivity: Human  
Isotype: IgG1  
Localization: Cytoplasm  
Formulation: Purified antibody in PBS pH7.4, containing BSA and  $\leq 0.09\%$  sodium azide (NaN<sub>3</sub>)  
Storage: Store at 2°- 8°C  
Applications: IHC, ELISA, Flow Cyt., WB  
Package:

Description	Catalog No.	Size
GAB1 Concentrated	MC0100	1 ml

**IHC Procedure\***

Positive Control Tissue: Kidney, breast cancer, bladder cancer  
Concentrated Dilution: 20-50  
Pretreatment: Citrate pH6.0 or EDTA pH 8.0, 15 minutes using Pressure Cooker, or 30-60 minutes using water bath at 95°-99°C  
Incubation Time and Temp: 30-60 minutes @ RT  
Detection: Refer to the detection system manual

\* Result should be confirmed by an established diagnostic procedure.



FFPE human bladder cancer stained with anti-GAB1 using DAB

**References:**

1. Gab1 regulates SDF-1-induced progression via inhibition of apoptosis pathway induced by PI3K/AKT/Bcl-2/BAX pathway in human chondrosarcoma. Fan Y, et al. Tumour Biol. Jan;37(1):1141-9, 2016.
2. Combined detection of Gab1 and Gab2 expression predicts clinical outcome of patients with glioma. Liu H, et al. Med Oncol. 2014 Aug;31(8):77, 2014.
3. Identification of GRB2 and GAB1 coexpression as an unfavorable prognostic factor for hepatocellular carcinoma by a combination of expression profile and network analysis. Zhang Y, et al. PLoS One 8:e85170, 2013.