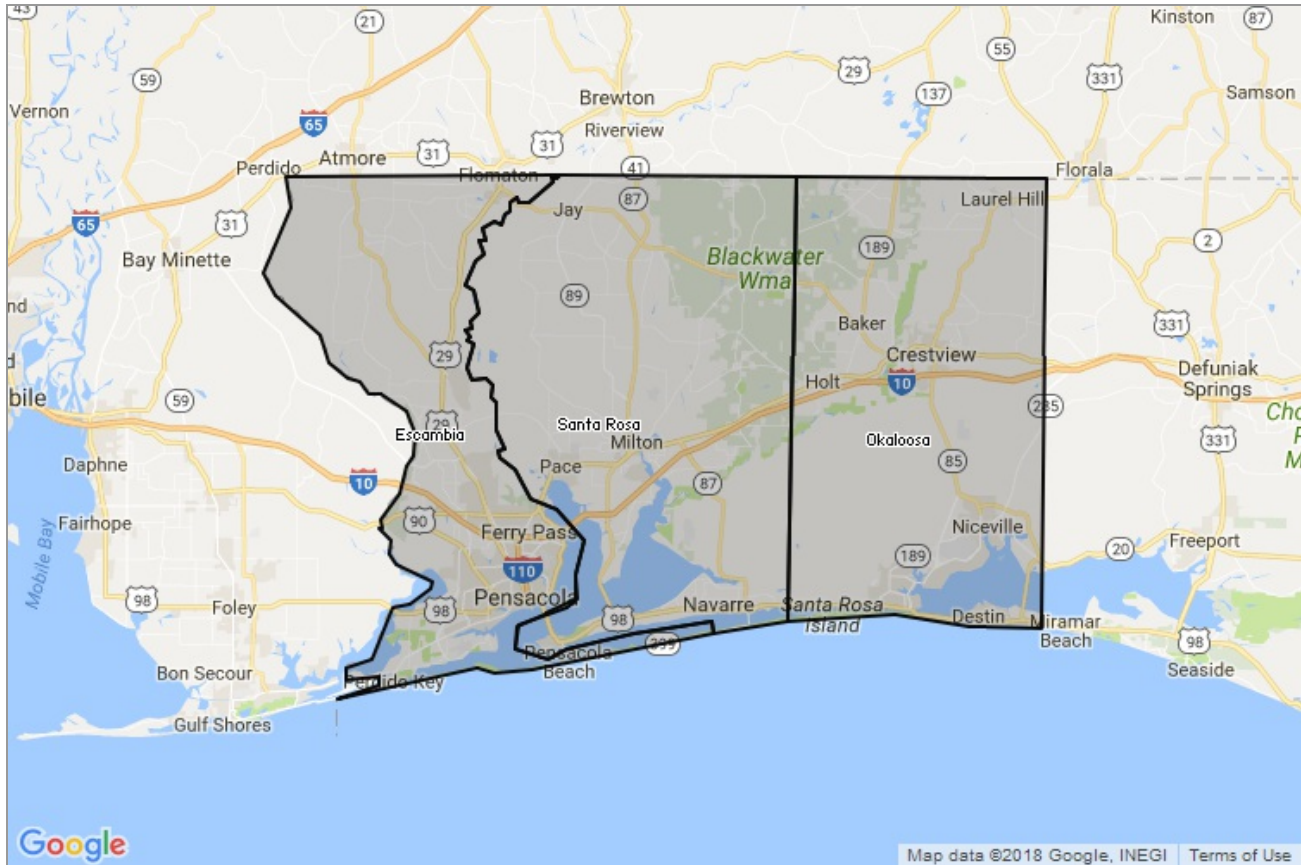


MARKET DATA REPORT

Monthly Market Data Report



Report Characteristics

Report Name:
Monthly Market Data Report

Report Date Range:
4/2017 – 4/2018

Filters Used:
Location

Avg/Med: Avg Only

Include Metrics By: County

Run Date: 05/09/2018

Scheduled: No

Presented by

**Navarre Area Board of REALTORS®
INC**

(850) 939-3870

<http://www.naborhome.com/>

1917 Navarre School Road
Navarre, FL 32566

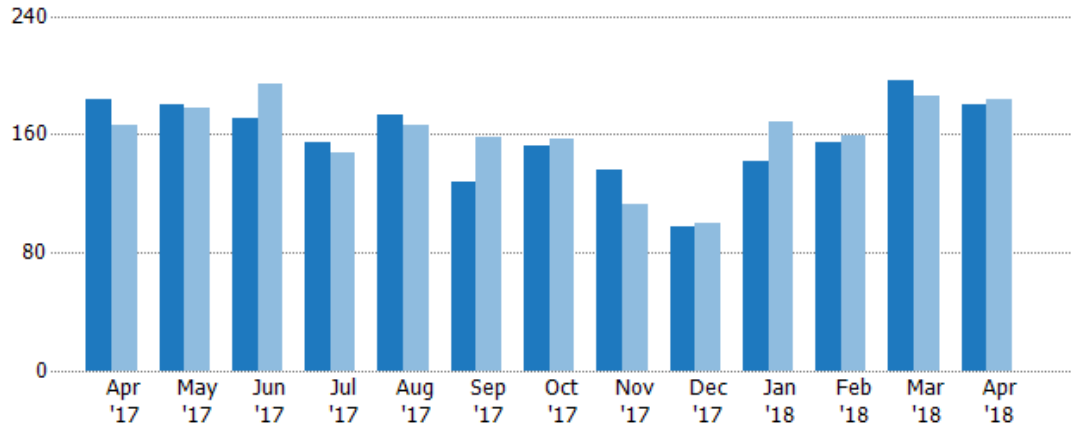
New Listings

The number of new single-family, condominium and townhome listings that were added each month.

Filters Used

County: Escambia County, Florida,
Okaloosa County, Florida, Santa
Rosa County, Florida

Month/ Year	Count	% Chg.
Apr '18	180	-2.2%
Apr '17	184	10.8%
Apr '16	166	33.1%



Current Year	184	180	171	154	173	128	152	136	97	142	154	196	180
Prior Year	166	178	194	148	166	158	157	113	100	168	159	186	184
Percent Change from Prior Year	11%	1%	-12%	4%	4%	-19%	-3%	20%	-3%	-15%	-3%	5%	-2%

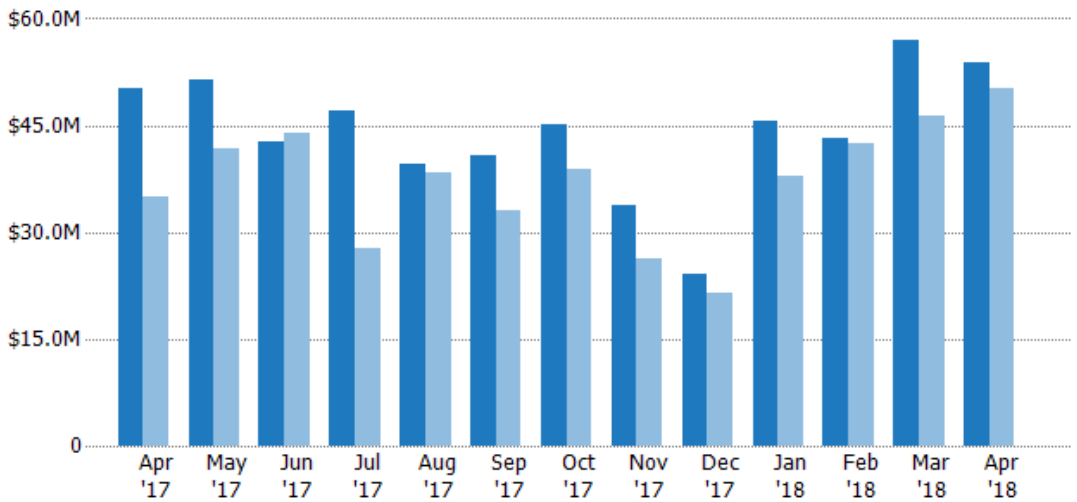
New Listing Volume

The sum of the listing price of single-family, condominium and townhome listings that were added each month.

Filters Used

County: Escambia County, Florida,
Okaloosa County, Florida, Santa
Rosa County, Florida

Month/ Year	Volume	% Chg.
Apr '18	\$53.9M	7.5%
Apr '17	\$50.2M	43.4%
Apr '16	\$35M	44.6%



Current Year	\$50.2M	\$51.3M	\$42.7M	\$46.9M	\$39.5M	\$40.7M	\$45.1M	\$33.9M	\$24M	\$45.7M	\$43.3M	\$57M	\$53.9M
Prior Year	\$35M	\$41.8M	\$43.9M	\$27.8M	\$38.3M	\$33.1M	\$38.9M	\$26.2M	\$21.5M	\$37.8M	\$42.3M	\$46.3M	\$50.2M
Percent Change from Prior Year	43%	23%	-3%	69%	3%	23%	16%	29%	12%	21%	2%	23%	8%

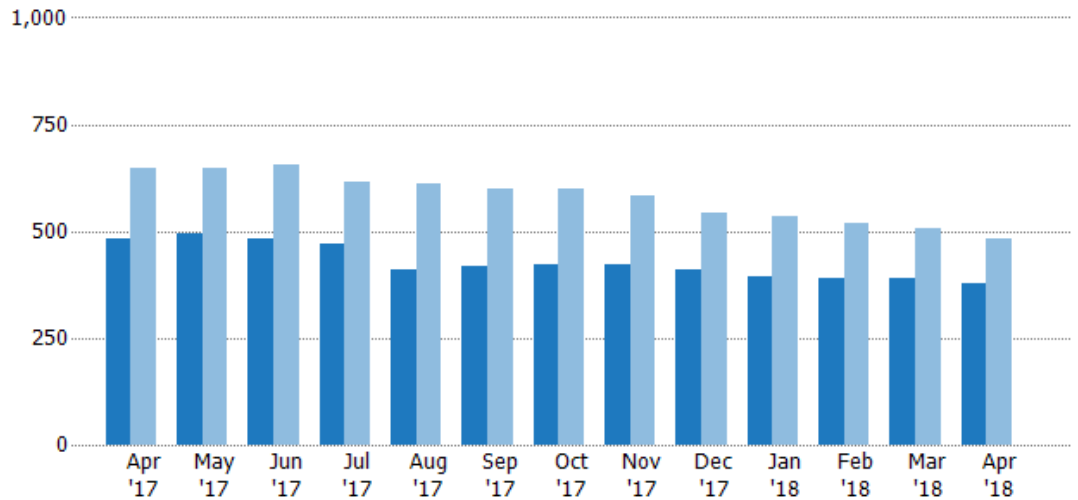
Active Listings

The number of active single-family, condominium and townhome listings at the end of each month.

Filters Used

County: Escambia County, Florida,
Okaloosa County, Florida, Santa
Rosa County, Florida

Month/ Year	Count	% Chg.
Apr '18	379	-21.7%
Apr '17	484	-25.3%
Apr '16	648	40.9%



Current Year	484	495	481	470	410	416	423	422	409	395	389	388	379
Prior Year	648	646	654	615	612	599	601	584	543	535	517	506	484
Percent Change from Prior Year	-25%	-23%	-26%	-24%	-33%	-31%	-30%	-28%	-25%	-26%	-25%	-23%	-22%

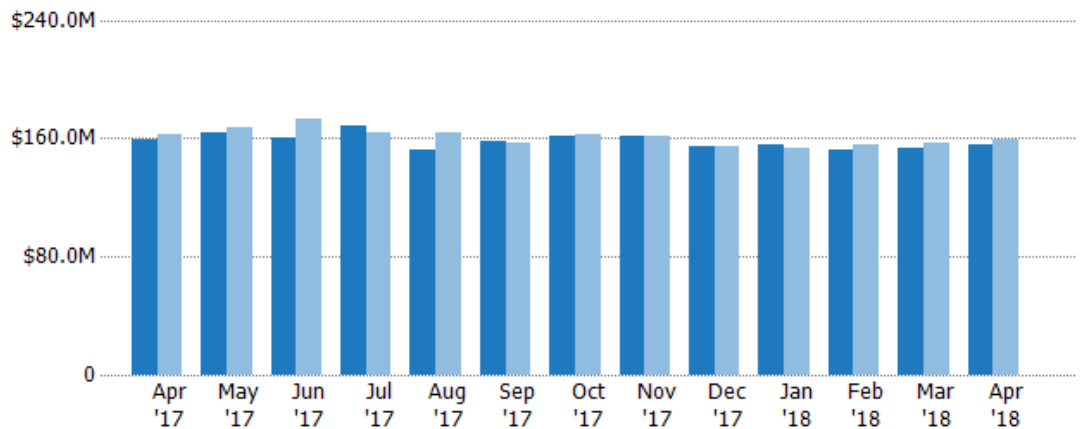
Active Listing Volume

The sum of the listing price of active single-family, condominium and townhome listings at the end of each month.

Filters Used

County: Escambia County, Florida,
Okaloosa County, Florida, Santa
Rosa County, Florida

Month/ Year	Volume	% Chg.
Apr '18	\$155M	-2.3%
Apr '17	\$159M	-2.3%
Apr '16	\$163M	30.5%



Current Year	\$159M	\$163M	\$160M	\$169M	\$152M	\$158M	\$161M	\$162M	\$154M	\$156M	\$153M	\$153M	\$155M
Prior Year	\$163M	\$167M	\$174M	\$164M	\$164M	\$157M	\$163M	\$161M	\$155M	\$153M	\$156M	\$156M	\$159M
Percent Change from Prior Year	-2%	-2%	-8%	3%	-7%	1%	-1%	0%	-1%	2%	-2%	-2%	-2%

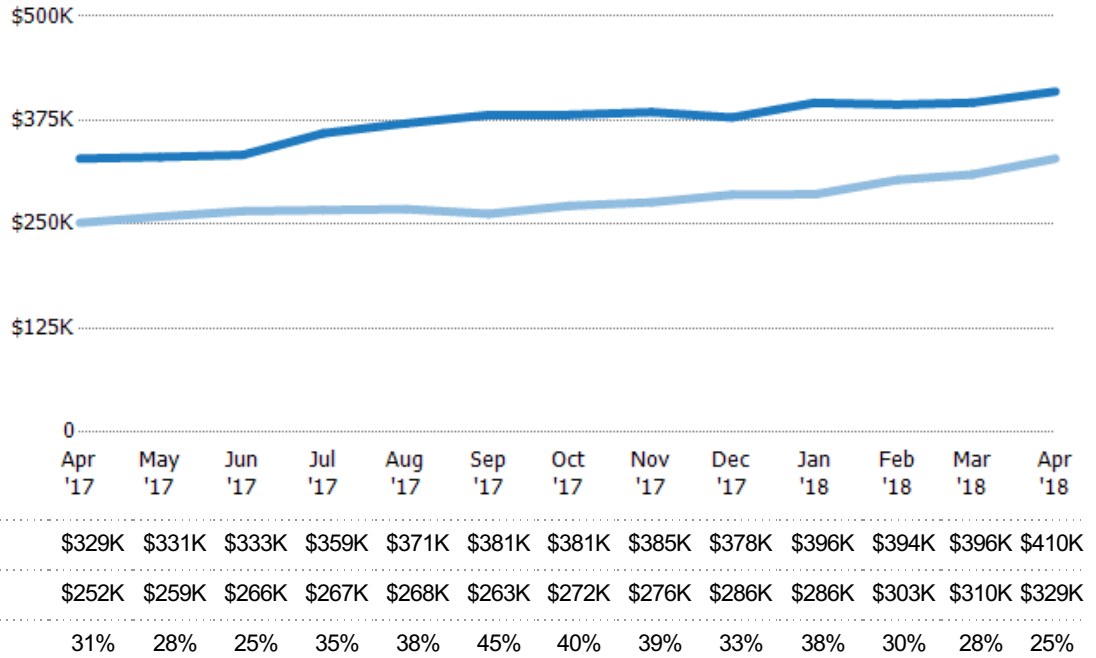
Average Listing Price

The average listing price of active single-family, condominium and townhome listings at the end of each month.

Filters Used

County: Escambia County, Florida,
Okaloosa County, Florida, Santa
Rosa County, Florida

Month/ Year	Price	% Chg.
Apr '18	\$410K	24.5%
Apr '17	\$329K	30.6%
Apr '16	\$252K	-7.5%



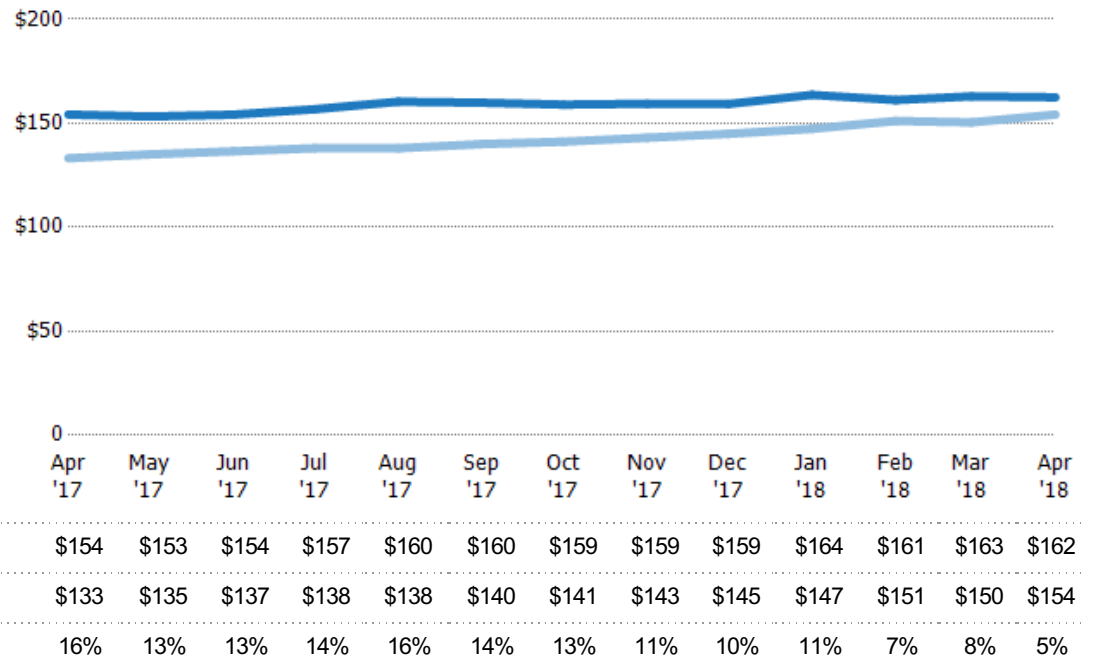
Average Listing Price per Sq Ft

The average of listing prices divided by the living area of homes on market at the end of each month.

Filters Used

County: Escambia County, Florida,
Okaloosa County, Florida, Santa
Rosa County, Florida

Month/ Year	Price/sq ft	% Chg.
Apr '18	\$162	5.4%
Apr '17	\$154	15.8%
Apr '16	\$133	-5.1%

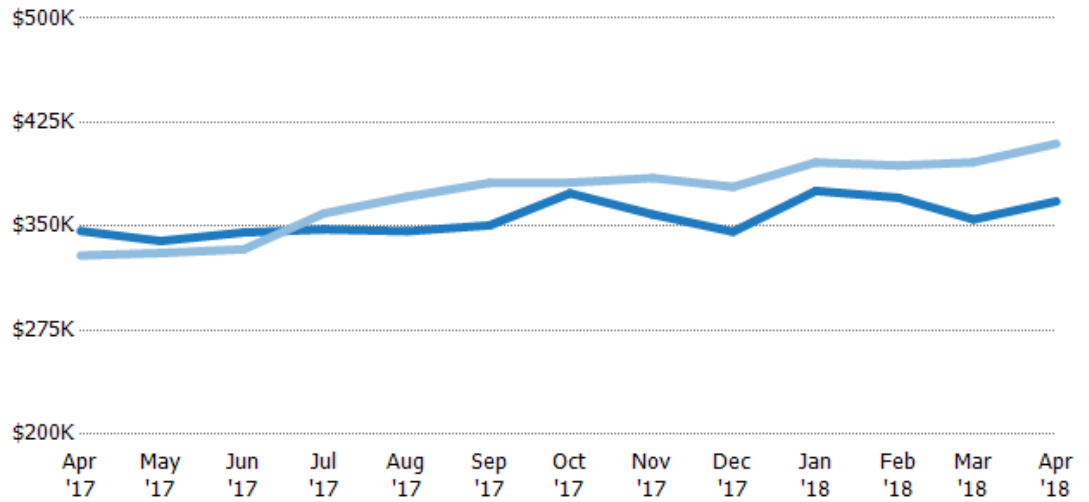


Average Listing Price vs Average Est Value

The average listing price as a percentage of the average AVM or RVM® valuation estimate for active listings each month.

Filters Used

County: Escambia County, Florida,
Okaloosa County, Florida, Santa
Rosa County, Florida



Avg Est Value	\$347K	\$339K	\$346K	\$348K	\$346K	\$351K	\$374K	\$359K	\$346K	\$376K	\$371K	\$355K	\$368K
Avg Listing Price	\$329K	\$331K	\$333K	\$359K	\$371K	\$381K	\$381K	\$385K	\$378K	\$396K	\$394K	\$396K	\$410K
Avg Listing Price as a % of Avg Est Value	95%	97%	96%	103%	107%	109%	102%	107%	109%	105%	106%	112%	111%

Appendix

The metrics that are calculated by RPR® may show the same general trends as those published by other sources (i.e. MLS, Associations or vendors), but because of our processes and parcel-centric approach, some variation may occur. Data sources include MLS's, where licensed, and public records for more in-depth metrics on distressed properties.

Report Details

Report Name: Monthly Market Data Report

Run Date: 05/09/2018

Scheduled: No

Report Date Range: From 4/2017 To: 4/2018

Information Included

- | | | |
|--|--|--|
| <input checked="" type="checkbox"/> Include Cover Sheet | <input checked="" type="checkbox"/> Include Appendix | <input checked="" type="checkbox"/> Averages |
| <input type="checkbox"/> Include Key Metric Summary | | <input type="checkbox"/> Medians |
| <input checked="" type="checkbox"/> Include Metrics By: County | | |

MLS Filter

MLS: All

Listing Filters

Property Types: All

Sales Types: All

Price Range: None

Location Filters

State: All

County: Escambia County, Florida Okaloosa County, Florida Santa Rosa County, Florida

ZIP Code: All

Listing Activity Charts

- ☒ New Listings
- ☒ Active Listings
- ☒ Average Listing Price
- ☒ Average Listing Price per Sq Ft
- ☒ Average Listing Price vs Est Value
- ☒ Median Days in RPR
- ☒ Months of Inventory
- ☒ Absorption Rate

Sales Activity Charts

- ☐ Active/Pending/Sold
- ☐ New Pending Sales
- ☒ Pending Sales
- ☒ Closed Sales
- ☐ Average Sales Price
- ☐ Average Sales Price per Sq Ft
- ☒ Average Sales Price vs Listing Price
- ☒ Average Sales Price vs Est Value

Distressed Charts

- ☒ Distressed Listings
- ☐ Distressed Sales

Data Tables Using 4/2018 data

- ☐ Listing Activity by ZIP
- ☐ Listing Activity by Metro Area
- ☐ Sales Activity by ZIP
- ☐ Sales Activity by Metro Area