

Positive Behavior Supports at School

Susan Marks, JD, PhD, BCBA-D

susan@susanmarks-advocates.com

Vanessa DiCarlo, M.Ed

vanessa@susanmarks-advocates.com

Susan Marks & Advocates, PLLC

<http://susanmarks-advocates.com>

<https://www.facebook.com/SMarksAdvocates/>



What is PBIS?

» “PBIS is a framework or approach for assisting school personnel in adopting and organizing evidence-based behavioral interventions into an integrated continuum that enhances academic and social behavior outcomes for all students.”
(<https://www.pbis.org/>)

Why does it matter?

- » Long term effects on the adults and the students/children
- » Disproportionate discipline
- » School to prison pipeline

Punitive discipline does not work....
in the long run

IDEA requires it!

- » In the case of a child whose behavior impedes the child's learning or that of others, consider the use of positive behavioral interventions and supports, and other strategies, to address that behavior. 34 C.F.R. § 300.324 (a)(2)(i)
- » Failure to consider and provide for needed behavioral supports through the IEP process could be a denial of FAPE!

Why is it so hard?

- » Requires a different way of viewing behaviors
- » Requires planning
- » Requires teaming
- » Requires reflection
- » Requires a systematic understanding based on data!

The definition of insanity
is doing the same thing
over and over and
expecting different
results.

**First,
understand...**

**MOST PEOPLE DO
NOT LISTEN WITH
THE INTENT TO
UNDERSTAND. MOST
PEOPLE LISTEN
WITH THE INTENT TO
REPLY. -STEPHEN R.
COVEY**

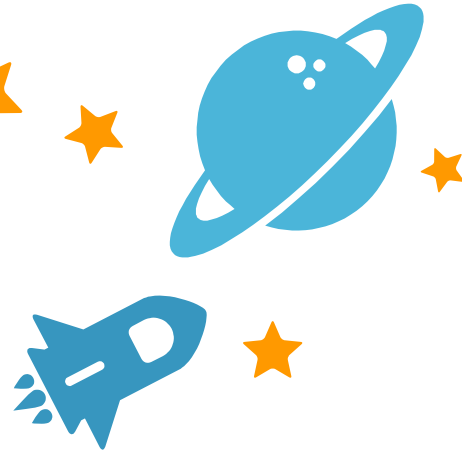
Vanessa's top 10 reasons school teams give for why a plan is not needed...

1. The behavior is out of the blue!
2. We don't develop behavior plans unless the child is having significant meltdowns.
3. This isn't a kid who needs a behavior plan, she/he just needs _____.
4. The behavior is a choice, she/he is doing it because _____.
5. He learns not to when we restrain/time out... that works best.

6. He is just too tired to _____.
7. He just can't _____, because he has sensory issues, and gets overstimulated.
8. When he is older, he will be able to _____, but he is just not ready.
9. Let's work on the behavior here, and then you can go there **AFTER** the behavior changes.
10. Mrs. X is the best _____, and has been working as a _____, for many years, she/he will write the FBA/PBIS plan.

Examples of PBIS strategies

Function- based Interventions





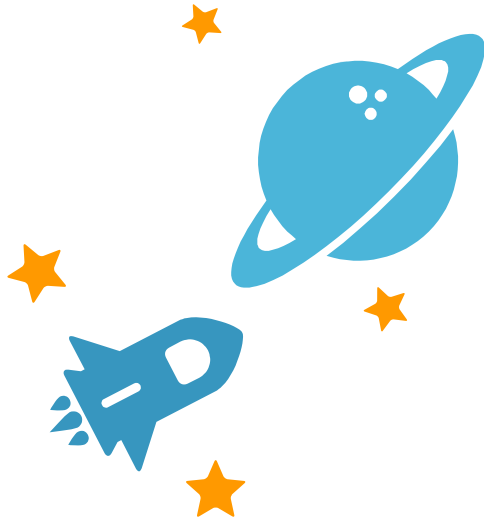
Antecedent Management



Skill Acquisition



Meaningful Reinforcers (in moderation)



Resources

- » Rethink Discipline <https://www2.ed.gov/policy/gen/guid/school-discipline/index.html>
- » OSEP Technical Assistance Center <https://www.pbis.org/>
- » Arizona PBIS <http://pbisaz.org/>
- » Dear Colleague Letter, OSEP (August 1, 2016). <https://www2.ed.gov/policy/gen/guid/school-discipline/files/dcl-on-pbis-in-ieps--08-01-2016.pdf>