



ANODICO CORPORATION
Corrosion Prevention and Critical
Subsea Asset Protection

ALUMINUM SACRIFICIAL ANODES CATALOG

ANODICO CORPORATION mold fabrication department has the capability of:

- Designing and fabricating any type, size, and configuration to deliver the best FIT FOR PURPOSE ANODE
- Most molds can be fabricated in 48hrs. and start product delivery within 72hrs.



Scan this with your mobile
device for Anodico LinkedIn

ANODICO can manufacture any chemical composition for aluminum and zinc alloys.

Al-Zn-In Anode Chemical Composition for Shallow Water (SHA) Applications

ELEMENT	Minimum (wt. %)	Maximum (wt. %)
Zinc (Zn)	2.5	5.75
Indium (In)	0.016	0.040
Silicon (Si)	---	0.12 Max
Copper (Cu)	---	0.003 Max
Iron (Fe)	---	0.09 Max
Cadmium (Cd)	---	0.002 Max
Mercury (Hg)	0.000%	0.000%
Others	---	0.02 Max ea.
Aluminum (Al)	Remainder	

Al-Zn-In Anode Chemical Composition for Deep Cold Water (DCW) Applications

ELEMENT	Minimum (wt. %)	Maximum (wt %)
Zinc (Zn)	4.75	6.0
Indium (In)	0.016	0.025
Silicon (Si)	0.08	0.12
Copper (Cu)	---	0.003 Max
Iron (Fe)	---	0.06 Max
Cadmium (Cd)	---	0.002 Max
Mercury (Hg)	0.000%	0.000%
Others	---	0.02 Max ea.
Aluminum (Al)	Remainder	

Al-Zn-In Anode Chemical Composition for MIL-A-24779

ELEMENT	Minimum (wt. %)	Maximum (wt %)
Zinc (Zn)	4.0	6.5
Indium (In)	0.014	0.020
Silicon (Si)	0.08	0.20
Copper (Cu)	---	0.004 Max
Iron (Fe)	---	0.09 Max
Others	---	0.02 Max ea.
Aluminum (Al)	Remainder	

For Quality Control, ANODICO’s electrochemical testing follows laboratory methods and procedures to determine the potential and current capacity characteristics of Aluminum base and Zinc base anode materials used for Cathodic Protection. It provides a means for screening various heats or lots of anodes to determine performance consistency on a regular basis from lot to lot, according to: NACE-TM0190, DNV-RP-B401 (Annex B) and ISO 15589-2 (Annex E).

Acceptance Criteria for Weight-Loss Current Capacity Test

Range of Evaluation Results Alloy	Operating Potential (SCE(A)-mV)	(% Efficiency)	Impressed Current Capacity		Alloy Density lb/in3
			A-h/kg	A-h/lb	
Al-Zn-In	1,032 to 1,140	90+	2,354 to 2,742	1,068 to 1,244	0.1006 – SHA 0.1009 – DCW
Zinc	969 to 1,051	98+	754 to 804	342 to 365	0.249278



Anode Sample ***Before***
14 day Mass Loss Method Test

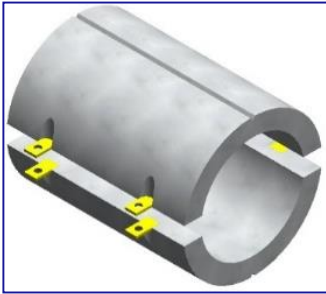


Anode Sample ***After***
14 day Mass Loss Method Test



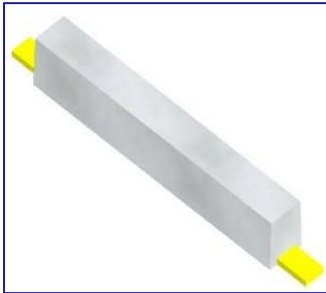
Platform Anodes

6-9



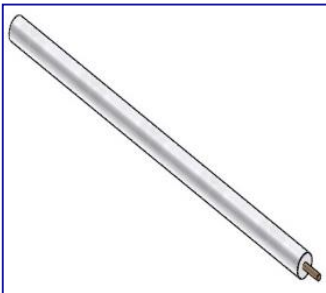
Bracelet Anodes

10-21



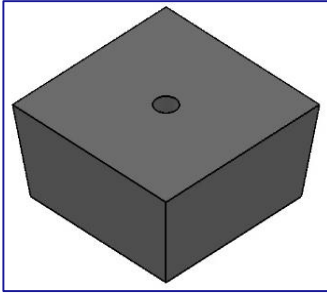
**Subsea Structures, Piers,
Pilings, and Ballasts Anodes**

22-24



Tanks & Vessels Anodes

25-28



Condenser Anodes

29-30



Hull Anodes

31-32

PLATFORM



ANODICO'S Platform anodes are casted with the highest-purity raw materials (Al-Zn-In).

Standard configurations are shown in pages 6-9.

Platform anodes are available in a variety of weights and dimensions with any specified core configuration to fit your needs.

Please contact us with your custom specifications.

NOTES:

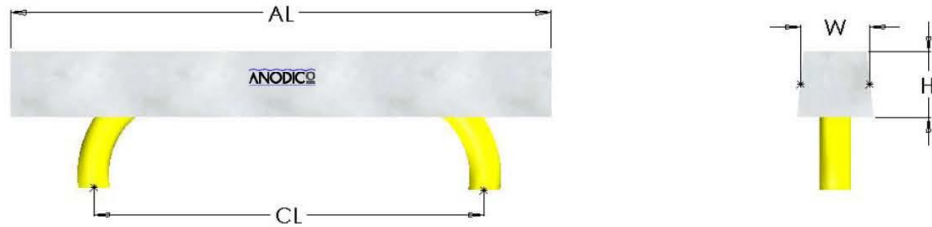
1. Net weight based on Aluminum alloy.
2. Anodes also available in Zinc. Weights and dimensions according to customer specifications.

AL	CL	W	H
ANODE LENGTH	CORE LENGTH	WIDTH	HEIGHT

PLATFORM ANODE WITH 90° PIPE CORE TYPE A



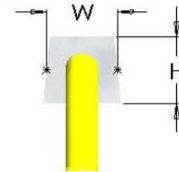
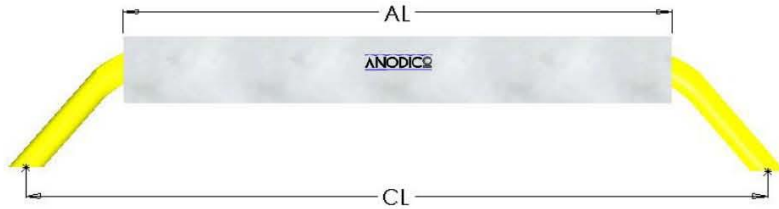
PLATFORM ANODE WITH 90° PIPE CORE TYPE B



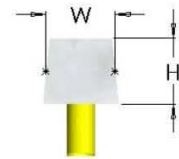
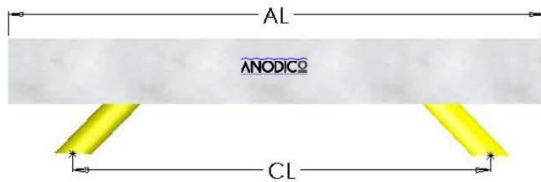
NET WEIGHT	AL	W	H	CL	ANODE TYPE	CORE SPECIFICATION
lbs.	in	in	in	in		Pipe Size
210	60	6	6¼	As Required	A	1½" Sch.80
				As Required	B	1½" Sch.80
325	96	6¼	6¼	As Required	A	2" Sch.80
				As Required	B	2" Sch.80
411	96	7¼	7¼	As Required	A	3" Sch.80
				As Required	B	3" Sch.80
540	96	8	8¼	As Required	A	3" Sch.80
				As Required	B	3" Sch.80
725	96	9½	9⅝	As Required	A	4" Sch.80
				As Required	B	4" Sch.80
1050	144	9½	9⅝	As Required	A	4" Sch.80
				As Required	B	4" Sch.80
1250	144	10	10¼	As Required	A	4" Sch.80
				As Required	B	4" Sch.80

AL	CL	W	H
ANODE LENGTH	CORE LENGTH	WIDTH	HEIGHT

PLATFORM ANODE WITH 45° PIPE CORE TYPE A



PLATFORM ANODE WITH 45° PIPE CORE TYPE B



PLATFORM ANODES

NET WEIGHT lbs.	AL in	W in	H in	CL in	ANODE TYPE	CORE SPECIFICATION
						Pipe Size
210	60	6	6 1/8	As Required	A	1 1/2" Sch.80
					B	1 1/2" Sch.80
325	96	6 1/4	6 1/4	As Required	A	2" Sch.80
					B	2" Sch.80
411	96	7 1/4	7 1/4	As Required	A	3" Sch.80
					B	3" Sch.80
540	96	8	8 1/4	As Required	A	3" Sch.80
					B	3" Sch.80
725	96	9 1/2	9 5/8	As Required	A	4" Sch.80
					B	4" Sch.80
1050	144	9 1/2	9 3/8	As Required	A	4" Sch.80
					B	4" Sch.80
1250	144	10	10 1/4	As Required	A	4" Sch.80
					B	4" Sch.80

AL	CL	W	H
ANODE LENGTH	CORE LENGTH	WIDTH	HEIGHT

PLATFORM ANODE WITH STRAIGHT PIPE CORE TYPE A

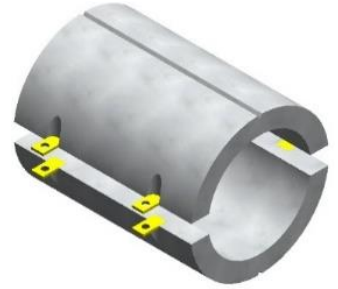


PLATFORM ANODE WITH STRAIGHT PIPE CORE TYPE B



NET WEIGHT lbs.	AL in	W in	H in	CL in	ANODE TYPE	CORE SPECIFICATION	
						Pipe Size	
210	60	6	6¼		As Required	A	1½" Sch.80
					As Required	B	1½" Sch.80
325	96	6¼	6¼		As Required	A	2" Sch.80
					As Required	B	2" Sch.80
411	96	7¼	7¼		As Required	A	3" Sch.80
					As Required	B	3" Sch.80
540	96	8	8¼		As Required	A	3" Sch.80
					As Required	B	3" Sch.80
725	96	9½	9⅝		As Required	A	4" Sch.80
					As Required	B	4" Sch.80
1050	144	9½	9¾		As Required	A	4" Sch.80
					As Required	B	4" Sch.80
1250	144	10	10¼		As Required	A	4" Sch.80
					As Required	B	4" Sch.80

BRACELET



ANODICO'S Aluminum Bracelet anodes are casted with the highest-purity raw materials (Al-Zn-In).

Standard configurations are shown in pages 10-21.

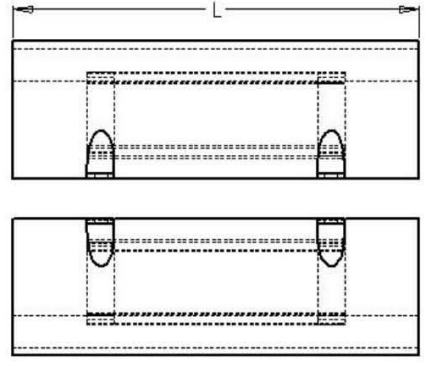
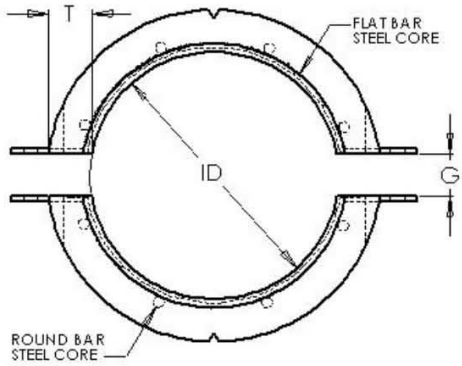
Aluminum Bracelet anodes are available in a variety of weights and dimensions with any specified core configuration to fit your needs.

Please contact us with your custom specifications.

NOTES:

1. Net weight based on Aluminum alloy.

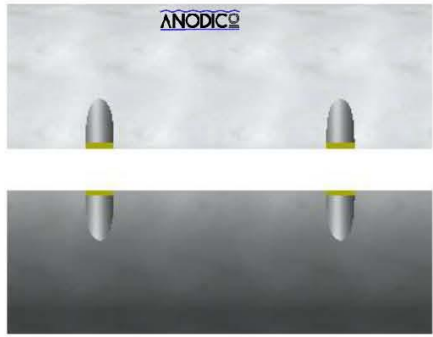
LEGEND			
ID	L	T	G
INSIDE DIAMETER	LENGTH	THICKNESS	GAP
BTW = Bracelet Tapered Weld-On			
BTB = Bracelet Tapered Bolt-On			
BSW = Bracelet Square Weld-On			
BSB = Bracelet Square Bolt-On			



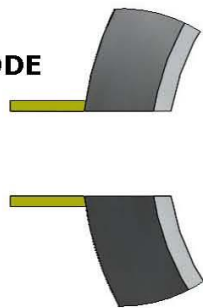
TAPERED TYPE ANODE



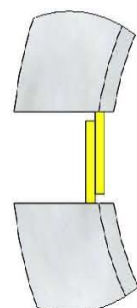
SQUARE TYPE ANODE



BOLT-ON TYPE ANODE



WELD-ON TYPE ANODE



ANODICO can manufacture any type of Bracelet anode to meet your needs.

Anodes can vary in ID, Length, Thickness, Gap and Core Configurations to meet your specific design.

PLEASE CONTACT US WITH YOUR DIMENSIONS AND SPECIFICATIONS TO DETERMINE NET WEIGHTS.



LEGEND			
ID	L	T	G
INSIDE DIAMETER	LENGTH	THICKNESS	GAP

ID (in)	L (in)	T (in)	G (in)	NET WEIGHT (lbs)	CORE SIZE (in)
6 5/8	8	2	2	35	3/16 X 1 1/2
6 5/8	10	2	2	45	3/16 X 1 1/2
6 5/8	12	2	2	54	3/16 X 1 1/2
6 5/8	14	2	2	63	3/16 X 1 1/2
6 5/8	16	2	2	72	3/16 X 1 1/2
6 5/8	18	2	2	81	3/16 X 1 1/2
6 7/8	8	2	2	37	3/16 X 1 1/2
6 7/8	10	2	2	47	3/16 X 1 1/2
6 7/8	12	2	2	56	3/16 X 1 1/2
6 7/8	14	2	2	66	3/16 X 1 1/2
6 7/8	16	2	2	75	3/16 X 1 1/2
6 7/8	18	2	2	85	3/16 X 1 1/2
8 5/8	8	2	2	46	3/16 X 1 1/2
8 5/8	10	2	2	57	3/16 X 1 1/2
8 5/8	12	2	2	69	3/16 X 1 1/2
8 5/8	14	2	2	81	3/16 X 1 1/2
8 5/8	16	2	2	93	3/16 X 1 1/2
8 5/8	18	2	2	105	3/16 X 1 1/2
8 7/8	8	2	2	47	3/16 X 1 1/2
8 7/8	10	2	2	59	3/16 X 1 1/2
8 7/8	12	2	2	71	3/16 X 1 1/2
8 7/8	14	2	2	83	3/16 X 1 1/2
8 7/8	16	2	2	95	3/16 X 1 1/2
8 7/8	18	2	2	107	3/16 X 1 1/2
10 3/4	8	2	2	56	3/16 X 1 1/2
10 3/4	10	2	2	70	3/16 X 1 1/2
10 3/4	12	2	2	85	3/16 X 1 1/2
10 3/4	14	2	2	99	3/16 X 1 1/2
10 3/4	16	2	2	114	3/16 X 1 1/2
10 3/4	18	2	2	128	3/16 X 1 1/2
11	10	2	2	72	3/16 X 1 1/2
11	12	2	2	87	3/16 X 1 1/2
11	14	2	2	102	3/16 X 1 1/2
11	16	2	2	116	3/16 X 1 1/2
11	18	2	2	131	3/16 X 1 1/2

BRACELET SQUARE WELD-ON ANODES

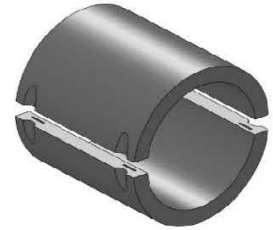
ID (in)	L (in)	T (in)	G (in)	NET WEIGHT (lbs)	CORE SIZE (in)
11	20	2	2	146	3/16 X 1 1/2
12	10	2	2	78	3/16 X 1 1/2
12	12	2	2	94	3/16 X 1 1/2
12	14	2	2	110	3/16 X 1 1/2
12	16	2	2	126	3/16 X 1 1/2
12	18	2	2	143	3/16 X 1 1/2
12	20	2	2	159	3/16 X 1 1/2
12 3/4	10	2	2	83	3/16 X 1 1/2
12 3/4	12	2	2	100	3/16 X 1 1/2
12 3/4	14	2	2	117	3/16 X 1 1/2
12 3/4	16	2	2	134	3/16 X 1 1/2
12 3/4	18	2	2	151	3/16 X 1 1/2
12 3/4	20	2	2	168	3/16 X 1 1/2
13	12	2	2	102	3/16 X 1 1/2
13	14	2	2	119	3/16 X 1 1/2
13	16	2	2	136	3/16 X 1 1/2
13	18	2	2	154	3/16 X 1 1/2
13	20	2	2	171	3/16 X 1 1/2
13	22	2	2	188	3/16 X 1 1/2
14	12	2	2	109	3/16 X 1 1/2
14	14	2	2	128	3/16 X 1 1/2
14	16	2	2	146	3/16 X 1 1/2
14	18	2	2	165	3/16 X 1 1/2
14	20	2	2	184	3/16 X 1 1/2
14	22	2	2	202	3/16 X 1 1/2
16	12	2	2	122	1/4 X 2
16	14	2	2	143	1/4 X 2
16	16	2	2	164	1/4 X 2
16	18	2	2	185	1/4 X 2
16	20	2	2	206	1/4 X 2
16	22	2	2	228	1/4 X 2
18	14	2	2	161	1/4 X 2
18	16	2	2	185	1/4 X 2
18	18	2	2	209	1/4 X 2
18	20	2	2	232	1/4 X 2
18	22	2	2	256	1/4 X 2
18	24	2	2	280	1/4 X 2
20	14	2	2	179	1/4 X 2
20	16	2	2	205	1/4 X 2
20	18	2	2	231	1/4 X 2
20	20	2	2	257	1/4 X 2
20	22	2	2	283	1/4 X 2
20	24	2	2	309	1/4 X 2
24	14	2	2	213	1/4 X 2
24	16	2	2	244	1/4 X 2
24	18	2	2	275	1/4 X 2
24	20	2	2	307	1/4 X 2
24	22	2	2	338	1/4 X 2

BRACELET SQUARE BOLT-ON ANODES

ANODICO can manufacture any type of Bracelet anode to meet your needs.

Anodes can vary in ID, Length, Thickness, Gap and Core Configurations to meet your specific design.

PLEASE CONTACT US WITH YOUR DIMENSIONS AND SPECIFICATIONS TO DETERMINE NET WEIGHTS.



LEGEND			
ID	L	T	G
INSIDE DIAMETER	LENGTH	THICKNESS	GAP

ID (in)	L (in)	T (in)	G (in)	NET WEIGHT (lbs)	CORE SIZE (in)
6 5/8	8	2	2	35	3/16 X 1 1/2
6 5/8	10	2	2	44	3/16 X 1 1/2
6 5/8	12	2	2	53	3/16 X 1 1/2
6 5/8	14	2	2	63	3/16 X 1 1/2
6 5/8	16	2	2	72	3/16 X 1 1/2
6 5/8	18	2	2	81	3/16 X 1 1/2
6 7/8	8	2	2	36	3/16 X 1 1/2
6 7/8	10	2	2	46	3/16 X 1 1/2
6 7/8	12	2	2	56	3/16 X 1 1/2
6 7/8	14	2	2	65	3/16 X 1 1/2
6 7/8	16	2	2	75	3/16 X 1 1/2
6 7/8	18	2	2	84	3/16 X 1 1/2
8 5/8	8	2	2	45	3/16 X 1 1/2
8 5/8	10	2	2	57	3/16 X 1 1/2
8 5/8	12	2	2	69	3/16 X 1 1/2
8 5/8	14	2	2	80	3/16 X 1 1/2
8 5/8	16	2	2	92	3/16 X 1 1/2
8 5/8	18	2	2	104	3/16 X 1 1/2
8 7/8	8	2	2	46	3/16 X 1 1/2
8 7/8	10	2	2	58	3/16 X 1 1/2
8 7/8	12	2	2	70	3/16 X 1 1/2
8 7/8	14	2	2	83	3/16 X 1 1/2
8 7/8	16	2	2	95	3/16 X 1 1/2
8 7/8	18	2	2	107	3/16 X 1 1/2
10 3/4	8	2	2	55	3/16 X 1 1/2
10 3/4	10	2	2	70	3/16 X 1 1/2
10 3/4	12	2	2	84	3/16 X 1 1/2
10 3/4	14	2	2	99	3/16 X 1 1/2
10 3/4	16	2	2	113	3/16 X 1 1/2
10 3/4	18	2	2	128	3/16 X 1 1/2
11	10	2	2	71	3/16 X 1 1/2
11	12	2	2	86	3/16 X 1 1/2
11	14	2	2	101	3/16 X 1 1/2
11	16	2	2	116	3/16 X 1 1/2
11	18	2	2	131	3/16 X 1 1/2

BRACELET SQUARE BOLT-ON ANODES

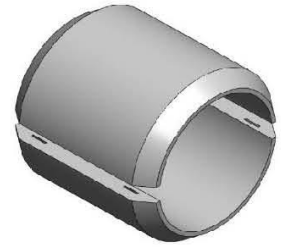
ID (in)	L (in)	T (in)	G (in)	NET WEIGHT (lbs)	CORE SIZE (in)
11	20	2	2	145	3/16 X 1 1/2
12	10	2	2	77	3/16 X 1 1/2
12	12	2	2	94	3/16 X 1 1/2
12	14	2	2	110	3/16 X 1 1/2
12	16	2	2	126	3/16 X 1 1/2
12	18	2	2	142	3/16 X 1 1/2
12	20	2	2	158	3/16 X 1 1/2
12 3/4	10	2	2	82	3/16 X 1 1/2
12 3/4	12	2	2	99	3/16 X 1 1/2
12 3/4	14	2	2	116	3/16 X 1 1/2
12 3/4	16	2	2	133	3/16 X 1 1/2
12 3/4	18	2	2	150	3/16 X 1 1/2
12 3/4	20	2	2	167	3/16 X 1 1/2
13	12	2	2	101	3/16 X 1 1/2
13	14	2	2	118	3/16 X 1 1/2
13	16	2	2	136	3/16 X 1 1/2
13	18	2	2	153	3/16 X 1 1/2
13	20	2	2	170	3/16 X 1 1/2
13	22	2	2	119	3/16 X 1 1/2
14	12	2	2	108	3/16 X 1 1/2
14	14	2	2	127	3/16 X 1 1/2
14	16	2	2	145	3/16 X 1 1/2
14	18	2	2	164	3/16 X 1 1/2
14	20	2	2	183	3/16 X 1 1/2
14	22	2	2	201	3/16 X 1 1/2
16	12	2	2	121	1/4 X 2
16	14	2	2	142	1/4 X 2
16	16	2	2	163	1/4 X 2
16	18	2	2	184	1/4 X 2
16	20	2	2	205	1/4 X 2
16	22	2	2	226	1/4 X 2
18	14	2	2	160	1/4 X 2
18	16	2	2	184	1/4 X 2
18	18	2	2	207	1/4 X 2
18	20	2	2	231	1/4 X 2
18	22	2	2	255	1/4 X 2
18	24	2	2	278	1/4 X 2
20	14	2	2	177	1/4 X 2
20	16	2	2	203	1/4 X 2
20	18	2	2	230	1/4 X 2
20	20	2	2	256	1/4 X 2
20	22	2	2	282	1/4 X 2
20	24	2	2	308	1/4 X 2
24	14	2	2	212	1/4 X 2
24	16	2	2	243	1/4 X 2
24	18	2	2	274	1/4 X 2
24	20	2	2	305	1/4 X 2
24	22	2	2	337	1/4 X 2

BRACELET TAPERED WELD-ON ANODES

ANODICO can manufacture any type of Bracelet anode to meet your needs.

Anodes can vary in ID, Length, Thickness, Gap and Core Configurations to meet your specific design.

PLEASE CONTACT US WITH YOUR DIMENSIONS AND SPECIFICATIONS TO DETERMINE NET WEIGHTS.



LEGEND			
ID	L	T	G
INSIDE DIAMETER	LENGTH	THICKNESS	GAP

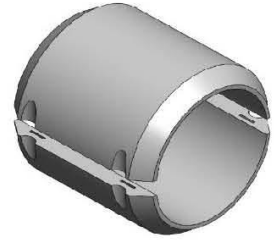
ID (in)	L (in)	T (in)	G (in)	NET WEIGHT (lbs)	CORE SIZE (in)
6 5/8	8	2	2	30	3/16 X 1 1/2
6 5/8	10	2	2	40	3/16 X 1 1/2
6 5/8	12	2	2	49	3/16 X 1 1/2
6 5/8	14	2	2	58	3/16 X 1 1/2
6 5/8	16	2	2	67	3/16 X 1 1/2
6 5/8	18	2	2	76	3/16 X 1 1/2
8 5/8	8	2	2	38	3/16 X 1 1/2
8 5/8	10	2	2	50	3/16 X 1 1/2
8 5/8	12	2	2	62	3/16 X 1 1/2
8 5/8	14	2	2	71	3/16 X 1 1/2
8 5/8	16	2	2	86	3/16 X 1 1/2
8 5/8	18	2	2	98	3/16 X 1 1/2
10 3/4	8	2	2	47	3/16 X 1 1/2
10 3/4	10	2	2	62	3/16 X 1 1/2
10 3/4	12	2	2	76	3/16 X 1 1/2
10 3/4	14	2	2	91	3/16 X 1 1/2
10 3/4	16	2	2	105	3/16 X 1 1/2
10 3/4	18	2	2	120	3/16 X 1 1/2
12 3/4	10	2	2	73	3/16 X 1 1/2
12 3/4	12	2	2	90	3/16 X 1 1/2
12 3/4	14	2	2	107	3/16 X 1 1/2
12 3/4	16	2	2	124	3/16 X 1 1/2
12 3/4	18	2	2	141	3/16 X 1 1/2
12 3/4	20	2	2	158	3/16 X 1 1/2
14	12	2	2	94	3/16 X 1 1/2
14	14	2	2	113	3/16 X 1 1/2
14	16	2	2	132	3/16 X 1 1/2
14	18	2	2	150	3/16 X 1 1/2
14	20	2	2	169	3/16 X 1 1/2
14	22	2	2	187	3/16 X 1 1/2
16	12	2	2	105	1/4 X 2
16	14	2	2	126	1/4 X 2
16	16	2	2	147	1/4 X 2
16	18	2	2	168	1/4 X 2
16	20	2	2	190	1/4 X 2

BRACELET TAPERED BOLT-ON ANODES

ANODICO can manufacture any type of Bracelet anode to meet your needs.

Anodes can vary in ID, Length, Thickness, Gap and Core Configurations to meet your specific design.

PLEASE CONTACT US WITH YOUR DIMENSIONS AND SPECIFICATIONS TO DETERMINE NET WEIGHTS.



LEGEND			
ID	L	T	G
INSIDE DIAMETER	LENGTH	THICKNESS	GAP

ID (in)	L (in)	T (in)	G (in)	NET WEIGHT (lbs)	CORE SIZE (in)
6 5/8	8	2	2	29	3/16 X 1 1/2
6 5/8	10	2	2	39	3/16 X 1 1/2
6 5/8	12	2	2	48	3/16 X 1 1/2
6 5/8	14	2	2	57	3/16 X 1 1/2
6 5/8	16	2	2	67	3/16 X 1 1/2
6 5/8	18	2	2	75	3/16 X 1 1/2
8 5/8	8	2	2	38	3/16 X 1 1/2
8 5/8	10	2	2	50	3/16 X 1 1/2
8 5/8	12	2	2	61	3/16 X 1 1/2
8 5/8	14	2	2	70	3/16 X 1 1/2
8 5/8	16	2	2	85	3/16 X 1 1/2
8 5/8	18	2	2	97	3/16 X 1 1/2
10 3/4	8	2	2	47	3/16 X 1 1/2
10 3/4	10	2	2	61	3/16 X 1 1/2
10 3/4	12	2	2	76	3/16 X 1 1/2
10 3/4	14	2	2	90	3/16 X 1 1/2
10 3/4	16	2	2	105	3/16 X 1 1/2
10 3/4	18	2	2	119	3/16 X 1 1/2
12 3/4	10	2	2	72	3/16 X 1 1/2
12 3/4	12	2	2	89	3/16 X 1 1/2
12 3/4	14	2	2	106	3/16 X 1 1/2
12 3/4	16	2	2	123	3/16 X 1 1/2
12 3/4	18	2	2	140	3/16 X 1 1/2
12 3/4	20	2	2	157	3/16 X 1 1/2
14	12	2	2	93	3/16 X 1 1/2
14	14	2	2	112	3/16 X 1 1/2
14	16	2	2	131	3/16 X 1 1/2
14	18	2	2	149	3/16 X 1 1/2
14	20	2	2	168	3/16 X 1 1/2
14	22	2	2	187	3/16 X 1 1/2
16	12	2	2	104	1/4 X 2
16	14	2	2	125	1/4 X 2
16	16	2	2	146	1/4 X 2
16	18	2	2	167	1/4 X 2
16	20	2	2	188	1/4 X 2

SUBSEA STRUCTURES, PIERS, PILINGS, BALLASTS



ANODICO'S Anodes for Subsea Structures, Piers, Pilings and Ballasts, are casted with the highest-purity raw materials (Al-Zn-In).

Standard configurations are shown in pages 22-24.

Anodes for Subsea Structures, Piers, Pilings and Ballasts are available in a variety of weights and dimensions, and with any specified core configuration to fit your needs.

Please contact us with your custom specifications.

NOTES:

1. Net weight based on Aluminum alloy.
2. Anodes also available in Zinc. Weights and dimensions according to customer specifications.

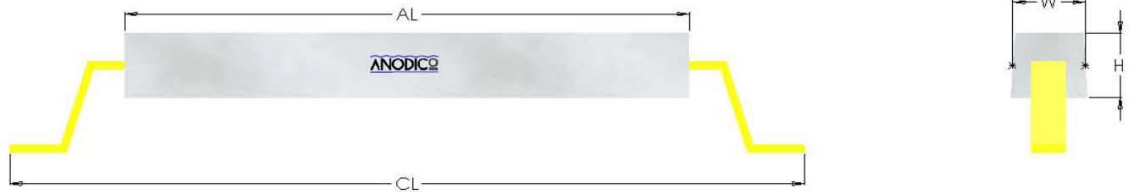
LEGEND			
AL	CL	W	H
ANODE LENGTH	CORE LENGTH	WIDTH	HEIGHT

TFC = Trapezoidal Flush Core Anode With Steel Flat Bar
TSOA = Trapezoidal Stand -Off Core Type A Anode With Steel Flat Bar
TSOB = Trapezoidal Stand -Off Core Type B Anode With Steel Flat Bar
TRST = Trapezoidal Straight Core Anode With Steel Rod Bar
TRSO = Trapezoidal Stand-Off Core Anode With Steel Rod Bar

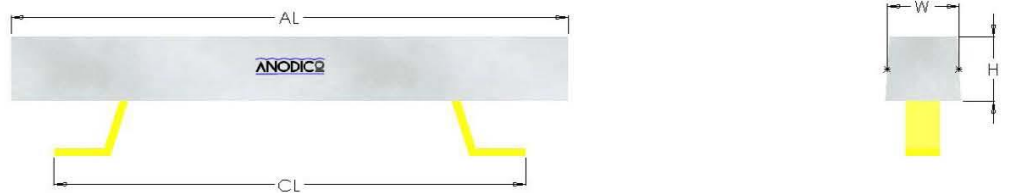
TRAPEZOIDAL FLUSH CORE ANODE WITH STEEL FLAT BAR



TRAPEZOIDAL STAND-OFF CORE TYPE A ANODE WITH STEEL FLAT BAR



TRAPEZOIDAL STAND-OFF CORE TYPE B ANODE WITH STEEL FLAT BAR



TRAPEZOIDAL STRAIGHT CORE ANODE WITH STEEL ROD BAR



TRAPEZOIDAL STAND-OFF CORE ANODE WITH STEEL ROD BAR



ANODICO can manufacture any type of Trapezoidal anodes to meet your needs.

Anodes can vary in: Net Weight, Anode Length, Core Length, Width, Height, and Core Configurations to meet your specific design.

PLEASE CONTACT US WITH YOUR DIMENSIONS AND SPECIFICATIONS TO DETERMINE NET WEIGHTS.

NET WEIGHT (lbs)	MINIMUM 1	MAXIMUM 305
ANODE LENGTH (AL) (in)	MINIMUM 2½	MAXIMUM 77
CORE LENGTH (CL) (in)	MINIMUM 4½	MAXIMUM 100
WIDTH (W) (in)	MINIMUM 1½	MAXIMUM 10½
HEIGHT (H) (in)	MINIMUM 1½	MAXIMUM 10½
ANODE TYPES	TFC = Trapezoidal Flush Core Anode With Steel Flat Bar	
	TSOA = Trapezoidal Stand -Off Core Type A Anode With Steel Flat Bar	
	TSOB = Trapezoidal Stand -Off Core Type B Anode With Steel Flat Bar	
	TRST = Trapezoidal Straight Core Anode With Steel Rod Bar	
	TRSO = Trapezoidal Stand-Off Core Anode With Steel Rod Bar	
CORE SIZES	ANODICO can manufacture the core sizes as required by the customer	

HEATER TREATER, TANKS & VESSELS



ANODICO'S Heater Treater, Tanks & Vessels anodes are casted with the highest-purity raw materials (Al-Zn-In).

Standard configurations are shown in pages 25-28.

Heater Treater, Tanks & Vessels anodes are available in a variety of weights and dimensions with any specified core configuration to fit your needs.

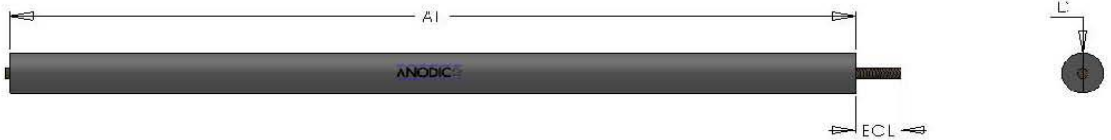
Please contact us with your custom specifications.

NOTES:

1. Net weight based on Aluminum alloy.
2. Heater Treater Anodes can be supplied with Redhead/Bluehead caps and jam nuts upon customer's request.
3. Anodes also available in Zinc. Weights and dimensions according to customer specifications.

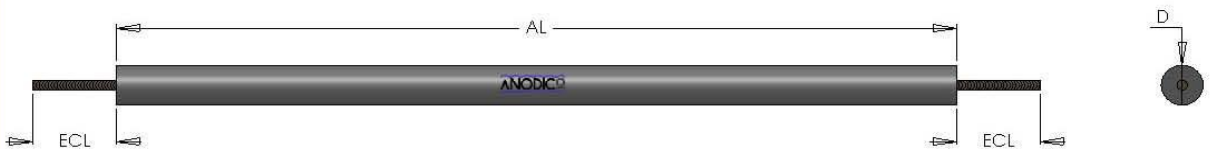
AL	ECL	D
ANODE LENGTH	EXPOSED CORE LENGTH	DIAMETER

HEATER TREATER WITH THREADED ROD CORE



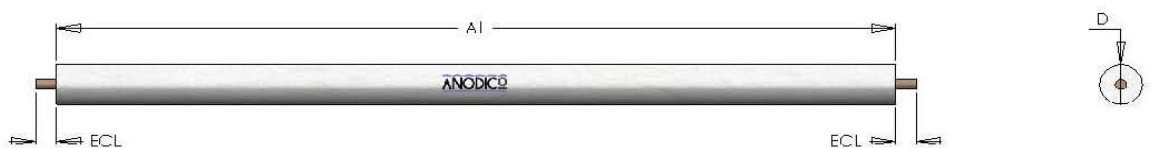
PRODUCT IDENTIFICATION	NET WEIGHT	AL	ECL	D	CORE SPECIFICATION
	lbs.	in	in	in	Rod Bar (in)
A-THR-3-30	18.5	30	3½	3	¾
A-THR-3-45	29	45	3½	3	¾
A-THR-3-60	37	60	3½	3	¾

HEATER TREATER WITH DOUBLE THREADED ROD CORE



PRODUCT IDENTIFICATION	NET WEIGHT	AL	ECL	D	CORE SPECIFICATION
	lbs.	in	in	in	Rod Bar (in)
A-DTHR-3-30	18.5	30	6	3	¾
A-DTHR-3-45	29	45	6	3	¾
A-DTHR-3-60	37	60	6	3	¾

HEATER TREATER WITH ROD CORE



PRODUCT IDENTIFICATION	NET WEIGHT	AL	ECL	D	CORE SPECIFICATION
	lbs.	in	in	in	Rod Bar (in)
A-ROD-3-30	18.5	30	1.5	3	¾
A-ROD-3-45	29	45	1.5	3	¾
A-ROD-3-60	37	60	1.5	3	¾

AL	ECL	D
ANODE LENGTH	EXPOSED CORE LENGTH	DIAMETER

HEATER TREATER WITH EYEBOLT ROD CORE



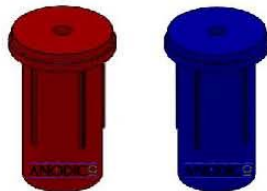
PRODUCT IDENTIFICATION	NET WEIGHT	AL	ECL	D	CORE SPECIFICATION
	lbs.	in	in	in	Rod Bar (in)
A-EYE-3-30	18.5	30	6	3	3/8 - 1/2
A-EYE-3-45	29	45	6	3	3/8 - 1/2
A-EYE-3-60	37	60	6	3	3/8 - 1/2

HEATER TREATER WITH DOUBLE EYEBOLT ROD CORE



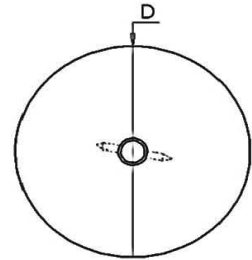
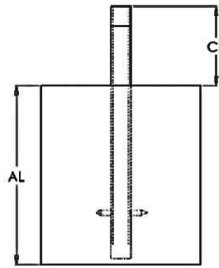
PRODUCT IDENTIFICATION	NET WEIGHT	AL	ECL	D	CORE SPECIFICATION
	lbs.	in	in	in	Rod Bar (in)
A-DEYE-3-30	18.5	30	6	3	3/8 - 1/2
A-DEYE-3-45	29	45	6	3	3/8 - 1/2
A-DEYE-3-60	37	60	6	3	3/8 - 1/2

REDHEAD OR BLUEHEAD MOUNT



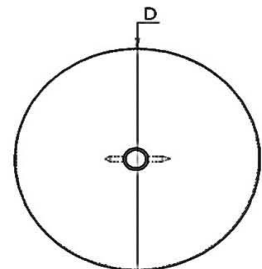
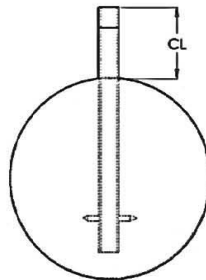
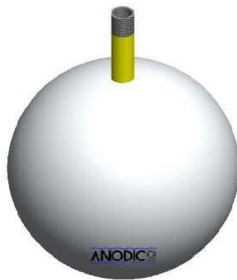
AL	ECL	D
ANODE LENGTH	CORE LENGTH	DIAMETER

CYLINDER ANODE WITH THREADED PIPE CORE



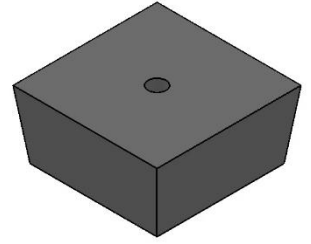
Product Identification	NET WEIGHT	AL	CL	D	CORE SPECIFICATION
	lbs.	in	in	in	Pipe Size
A-A-HFT-45	45	9	4	8	1" Sch.80

SPHERE ANODE WITH THREADED PIPE CORE



Product Identification	NET WEIGHT	ECL	D	CORE SPECIFICATION
	lbs.	in	in	Pipe Size
A-A-HS-46	46	4	9.8	1" Sch.80

CONDENSER ANODES



ANODICO'S Condenser anodes are casted with the highest-purity raw materials (Al-Zn-In).

Standard configurations are shown in pages 29-30.

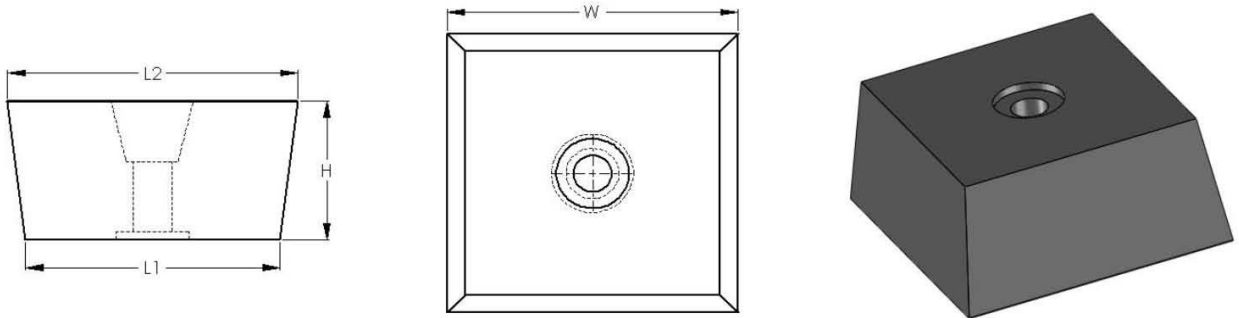
Condenser anodes are available in a variety of weights and dimensions with any specified core configuration to fit your needs.

Please contact us with your custom specifications.

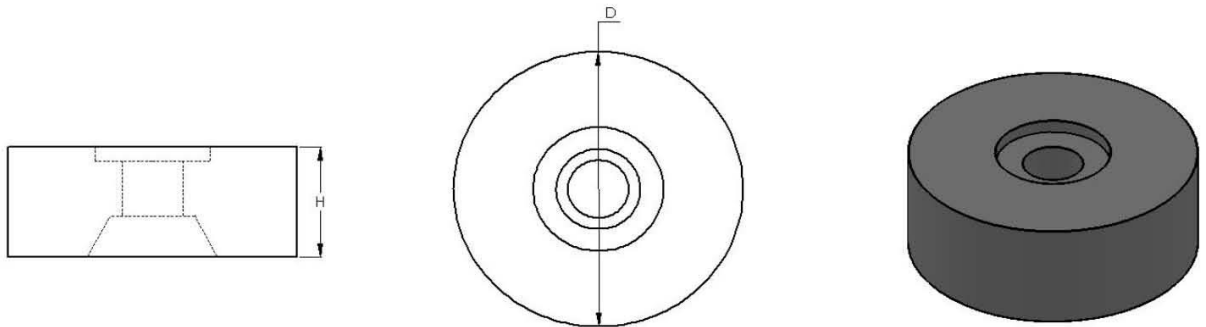
NOTES:

1. Net weight based on Aluminum alloy.
2. Anodes also available in Zinc. Weights and dimensions according to customer specifications.

L1	L2	W	H	D
LENGTH 1	LENGTH 2	WIDTH	HEIGHT	DIAMETER



PRODUCT IDENTIFICATION	NET WEIGHT	L1	L2	W	H	CORE SPECIFICATION
	lbs.	in	in	in	in	
A-C-12.5	12.5	7	8	8	4	3/4
A-C-23	23	7	8	8	2	3/4
A-CC-12.5	12.5	7	8	8	4	3/4 NPT Coupling
A-CC-23	23	7	8	8	2	3/4 NPT Coupling



PRODUCT IDENTIFICATION	NET WEIGHT	D	H	CORE SPECIFICATION
	lbs.	in	in	
A-CS-3.5	3.5	5	2	3/4

HULLS



ANODICO'S Hulls anodes are casted with the highest-purity raw materials (Al-Zn-In).

Standard configurations are shown in page 31-32. Hulls anodes are available in a variety of weights and dimensions with any specified core configuration to fit your needs.

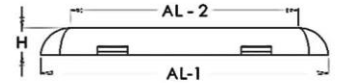
Please contact us with your custom specifications.

NOTES:

1. Net weight based on Aluminum alloy.
2. Anodes also available in Zinc. Weights and dimensions according to customer specifications.
3. Cores for Zinc anodes are galvanized

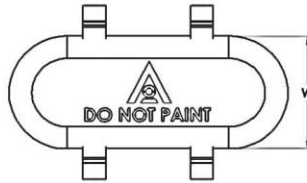
AL-1	AL - 2	W	H
ANODE LENGTH	ANODE LENGTH	WIDTH	HEIGHT

RECTANGLE TAPERED HULL WITH FLAT BAR CORE



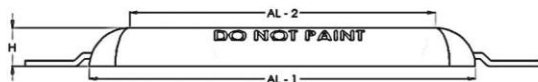
Product Identification	NET WEIGHT	AL - 1	AL - 2	W	H	CORE SPECIFICATION
	lbs.	in	in	in	in	Flat Bar Size
A-A-2-32H	32	20	16	10	2	As Required

OVAL TAPERED HULL WITH FLAT BAR CORE



Product Identification	NET WEIGHT	AL - 1	AL - 2	W	H	CORE SPECIFICATION
	lbs.	in	in	in	in	Flat Bar Size
A-A-2-10H	10	14	10	6½	1¼	As Required

TRAPEZOIDAL TAPERED HULL WITH FLAT BAR CORE



Product Identification	NET WEIGHT	AL - 1	AL - 2	W	H	CORE SPECIFICATION
	lbs.	in	in	in	in	Flat Bar Size
A-A-1-15H	15	20%	16%	5	1½	As Required
A-A-1-20H	20	24	20	4½	2¼	As Required
A-A-1-23H	23	24	20	5	2	As Required
A-A-1-29H	29	24	20	5	2½	As Required