

# METALWORKS® STEEL SHINGLES

**ASTONWOOD® · STONECREST® SLATE · STONECREST® TILE**

MANUFACTURED IN JOPLIN, MO

PRODUCT DATA

## DESCRIPTION

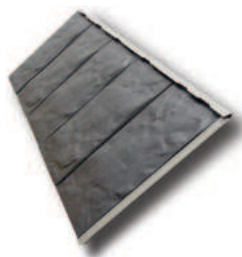
[www.MetalRoofingWholesalers.com](http://www.MetalRoofingWholesalers.com) 1-877-646-6382

**METALWORKS®** steel shingles create a dramatic look and random finish of natural slate, cedar wood, or smooth uniform tile. A beautiful choice for a wide range of residential and commercial applications.

- G-90 steel construction.
- Kynar 500®/Hylar 5000® finish, Fluoron® Coil Coating System containing 70% polyvinylidene Fluoride (PVDF) proprietary resins.
- Can be used for reroofing applications—install over up to two layers of asphalt shingles. Check your local building code. Building code restrictions may apply.
- Can be applied on decks greater than 3 inches per foot.
- Available in a variety of colors, all of which are ENERGY STAR® qualified.
- Four-way locking system
- 100% recyclable
- 50-year Limited Warranty and Arbitration Agreement, 25-year Full Start Period

**USES:** For application to roof decks with inclines 3 inches per foot or greater, including to mansard or sidewall application. For slopes between 3 and 4 inches per foot, TW Metal & Tile Underlayment or TW Underlayment must be used over entire deck area.

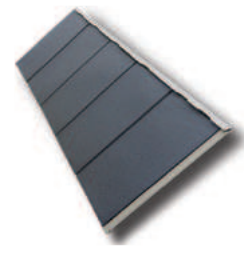
**STONECREST® SLATE**



**ASTONWOOD®**



**STONECREST® TILE**



**SHINGLES BEGIN TO AGE AS SOON AS THEY ARE EXPOSED TO NATURE. BUILDINGS EXPERIENCE AGING FACTORS DIFFERENTLY, SO IT IS DIFFICULT TO PREDICT HOW LONG SHINGLES WILL LAST. THAT'S WHY TAMKO PROVIDES A LIMITED WARRANTY THAT INCLUDES A BINDING ARBITRATION CLAUSE AND OTHER TERMS AND CONDITIONS WHICH ARE INCORPORATED HEREIN BY REFERENCE. YOU MAY OBTAIN A COPY OF THE LIMITED WARRANTY AT TAMKO.COM OR BY CALLING 1-800-641-4691.**

## TECHNICAL INFORMATION

UL Listed for Class A Fire Rating:	UL 790/ASTM E108, Class A†
UL Classified for Wind Resistance:	ASTM D3161, Class F
UL Classified in accordance with:	UL 2218 Class 4 Impact Resistance
UL Reports:	UL ER18590-01
Florida Building Code Approved:	FL3901
Canadian Construction Materials Centre Report:	CCMC 13011-R

†Contact TAMKO or Underwriters Laboratories for specific application requirements for UL Class A rated systems.

## COLORS

### STONECREST® SLATE

- Sequoia Red
- Vermont Blue
- Timber Brown
- Forest Green
- Sierra Slate Grey
- River Rock Brown
- Quaker Green
- Canyon Copper Bronze

### STONECREST® TILE

- Vermont Blue
- Sierra Slate Grey
- Quaker Green

### ASTONWOOD®

- Sequoia Red
- Vermont Blue
- Timber Brown
- Forest Green
- Sierra Slate Grey
- River Rock Brown
- Quaker Green
- Canyon Copper Bronze



All MetalWorks shingles are ENERGY STAR qualified and rated by the Cool Roof Rating Council.



Metal Roofing Wholesalers  
Toll Free 1-877-646-6382  
[MetalRoofingWholesalers.com](http://MetalRoofingWholesalers.com)

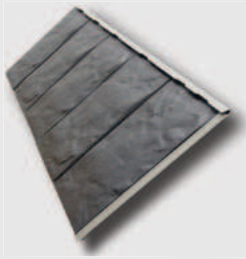
# METALWORKS® STEEL SHINGLES

**ASTONWOOD® · STONECREST® SLATE · STONECREST® TILE**

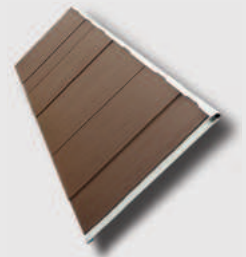
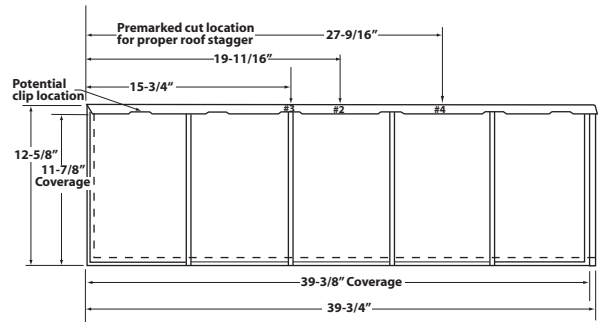
MANUFACTURED IN JOPLIN, MO

PRODUCT DATA

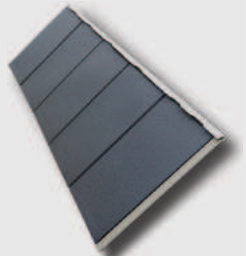
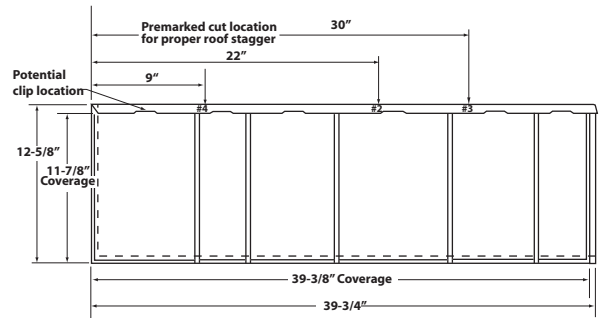
[www.MetalRoofingWholesalers.com](http://www.MetalRoofingWholesalers.com) 1-877-646-6382



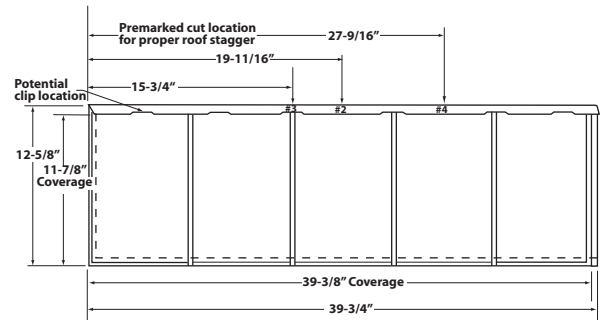
**STONECREST® SLATE** steel shingles create the dramatic look and random finish of natural slate. The double-stamped manufacturing process creates stunning beauty. Available in a beautiful array of colors.



**ASTONWOOD®** steel shingles combine the look of cedar shingles with galvanized steel to produce a roofing product which replicates the rich look of wood. Available in a wide array of beautiful colors.



**STONECREST® TILE** steel shingles create the distinctive look of smooth, uniform tile for those who appreciate a contemporary and refined appearance.



## PRODUCT DATA

Information included in this product data sheet was current at time of printing.

To obtain a copy of the most current version of this product data sheet, visit us online at [tamko.com](http://tamko.com) or call us at 800-641-4691.

Shingle size	12-5/8" × 39-3/4"
Exposure	12"
Coverage per Box <sup>††</sup>	49.2 sq.ft.
Shingles per Box	15
Shingle Material	28 gauge nominal 0.0162" (0.066802 cm) thickness, including G-90 galvanization and paint coatings.
Exterior Finish	Fluropon coatings with primer, 1 mil dry film thickness.
Interior Finish	Wash coat with primer, 0.6 mil dry film thickness.
Clip Size	1-1/4" wide × 2-1/8" long × 1/5" deep
Clip Material	0.015" thick, G-90 galvanized steel

Refer to **Accessory Product Data Sheet** for more information.

<sup>††</sup> When applied according to instructions.



Metal Roofing Wholesalers  
Toll Free 1-877-646-6382  
[MetalRoofingWholesalers.com](http://MetalRoofingWholesalers.com)

[www.MetalRoofingWholesalers.com](http://www.MetalRoofingWholesalers.com) 1-877-646-6382

©2017 TAMKO Building Products, Inc. MetalWorks Logo, MetalWorks®, AstonWood®, StoneCrest® and TAMKO® are registered trademarks of TAMKO Building Products, Inc. Fluropon® is a registered trademarks of The Valspar Corporation, Inc. Kynar 500® is a registered trademark of Arkema, Inc. Hylar 5000® is a registered trademark of Solvay Solexis, Inc.

Rev. 11/20/2017