

Day of the Dead Girl

CBK Needlepoint Collection

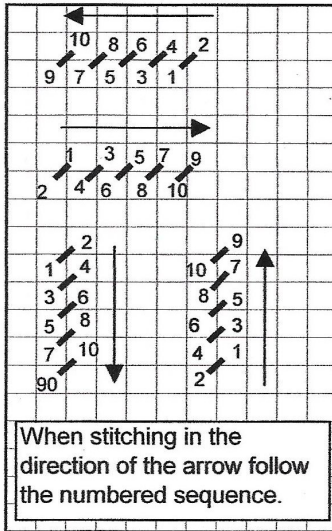
Stitch Guide

get the point • “Day of the Dead Girl” • S-PL 74

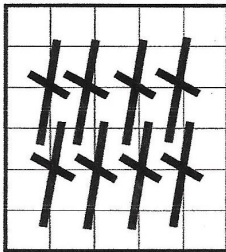


Stitch Guide by Cynthia D. Thomas

Outline: Splendor 801 – 5 ply – Continental. Note: I outlined all the flowers, flower centers, bottom of face, neck, backbone, collarbone, bodice on dress and dress. I did not outline hair, earrings, or flowers on dress.



Face: Skin – Kreinik #12 100 – 1 strand – Knotted.



Eyes – Splendor 801 or Blanc – 5 ply – Basketweave.

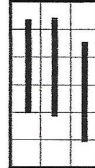


Lips – black line – Splendor 801 – 5 ply – Continental.

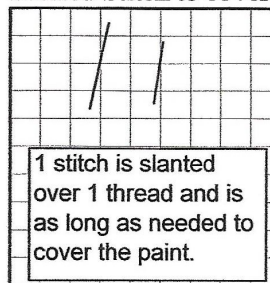
Inside – Sprinkles 25 – 1 strand – Basketweave.

Nose – Splendor 801 – 5 ply – Basketweave.

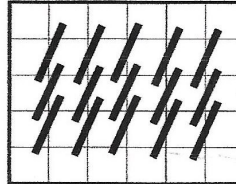
Eyebrows – Artic Rays AR1 – 1 strand – **Satin Stitch** to cover paint.



Eye Lashes – Artic Rays AR1 – 1 strand – **Slanted Stitch** to cover paint.



Hair: Petite Very Velvet 601 – 1 strand – **Interlocking Goblin**.

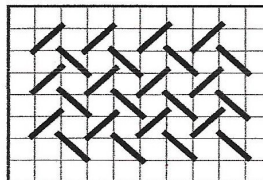


Backbone and Collarbone: Kreinik #12 100 – 1 strand – Basketweave.

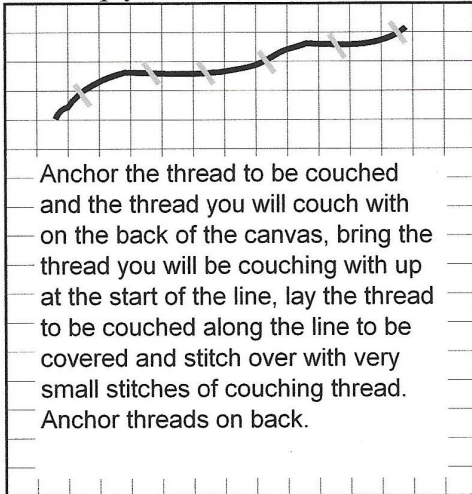
Black lines inside bones – Splendor 801 – 5 ply – Straight stitches to cover paint.

Dress: Bodice – Soie Crystale 1139 – 4 ply – Basketweave.

Dress – Soie Crystale 1139 – 4 ply – **Woven Stitch**.



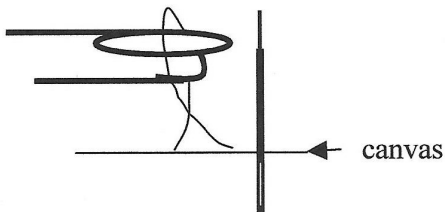
Decorations on dress: Black lines – Kreinik #12 005 – 1 strand couched with Splendor 801 – 1 ply.



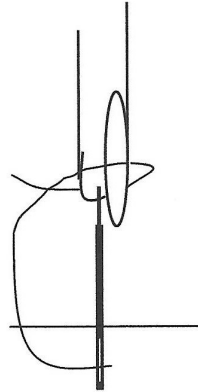
Orange Flower – Splendor 1126 – 4 ply – Cast On. Note: Point A and B will be 1 thread apart.

1. Anchor thread on back of canvas. Come up at A (bottom of area to be covered), down at B (top of area to be covered), and back up at A. Hint: Leave most of the thread on top of the canvas, do not pull the needle out of the canvas leave it sticking up part way out of the canvas. It is helpful if you need both hands to cast on to stick the eye end of the needle in a cork or piece of styrofoam to stabilize the needle.

2. Take the loop of the needle coming out of the canvas, wrap the thread around left pointer finger starting at the front, going around the back and back to the front.

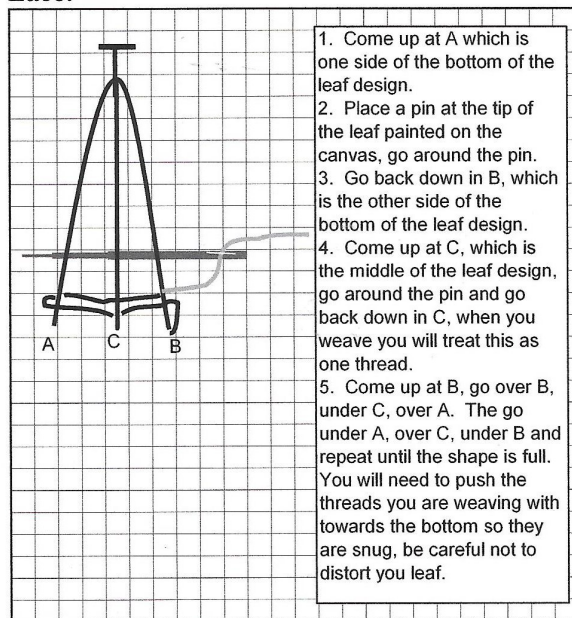


3. Slide the loop on to the needle from the end of your finger. Gently tighten thread around needle so it is snug to the needle but not too tight because you will eventually need to pull the needle through. Repeat for desired number of wraps. When you have the number of wraps needed to cover the area, go back down at B and pull tight.



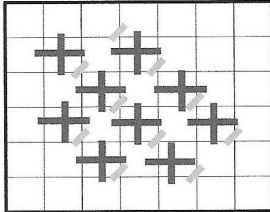
Outline petals in black by couching Kreinik #12 005 – 1 strand with 1 strand of Splendor 801.

Leaves: DMC Floss 906 – 6 ply – Needle Lace.



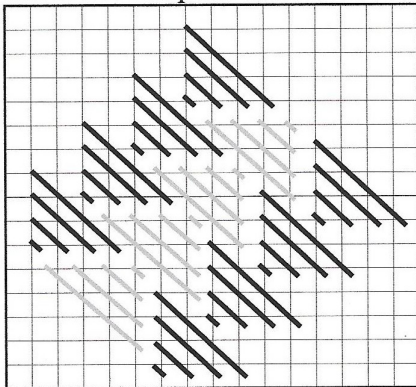
Pink Flowers on dress: Attach Just Another Button Company Button TC1006L.

Flowers in Hair: Orange – Splendor 1126 – 4 ply (black lines); Accentuate 27 - 2 strands (gray lines) – Mini-Cross Diagonal. Note: I slanted the gray lines, different directions on each petal.

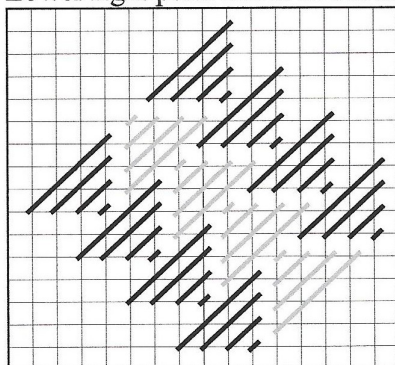


Note: I worked pink flower except for the center on the main canvas, then appliquéd another pink flower on top. See instructions on last page.

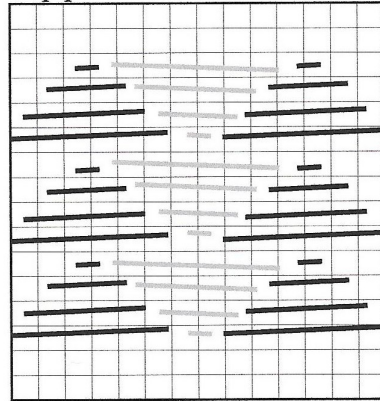
Pink – Diagonal petals - Sprinkles 25 – 1 strand – Milanese. Note: Upper right petal and lower left petal slant as shown below.



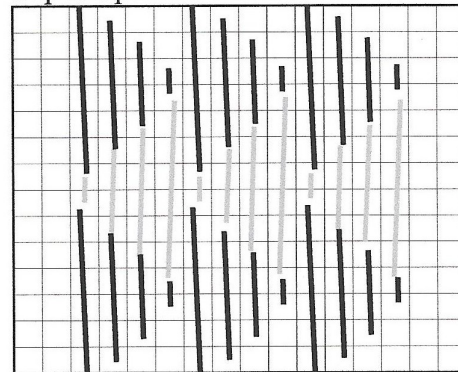
Lower right petal slants as shown below.



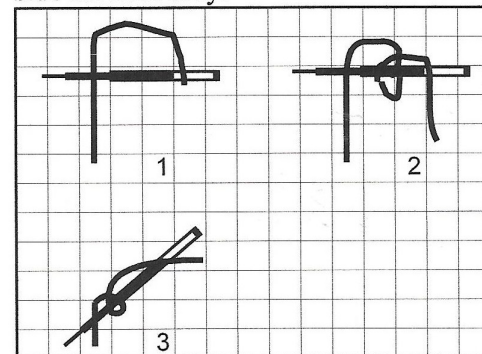
Top petal is Horizontal Milanese.



Top left petal is Vertical Milanese.



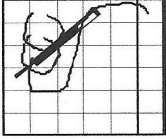
Centers – Flair 572 – 1 strand – French Knot. Note: If you wish to appliquéd the center flower, work French Knots in two side flowers only.



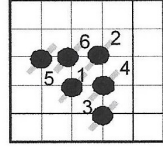
Day of the Dead Girl

5

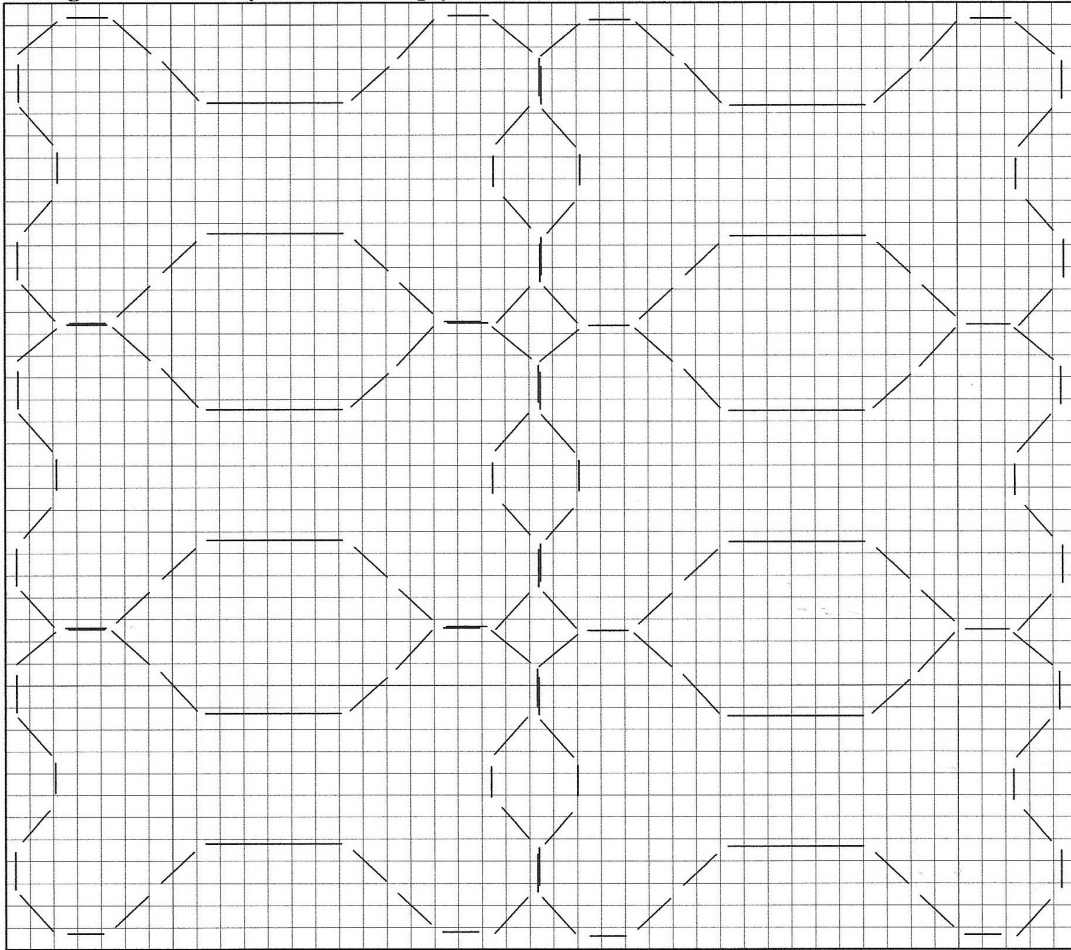
Earrings: Wires – Kreinik #8 001HL – 1 strand – Chain Stitch.



Skulls – attach Sundance Beads Size 11 Color F250 and 401 using Basketweave technique.



Background: Pebbly Perle 55 – 1 ply – Blackwork.



If you wish to appliqué the center flower. Trace flower shape in the center of a 7x7 inch piece of canvas using the canvas count that matches the main canvas and work like the flower on canvas except for the center. Use DMC Memory Wire 6020 and sew around edge of flower by stitching over the wire and through the canvas so the stitches are next to each other. Cut flower shape out close to the wire. Attach by working French Knots in center.