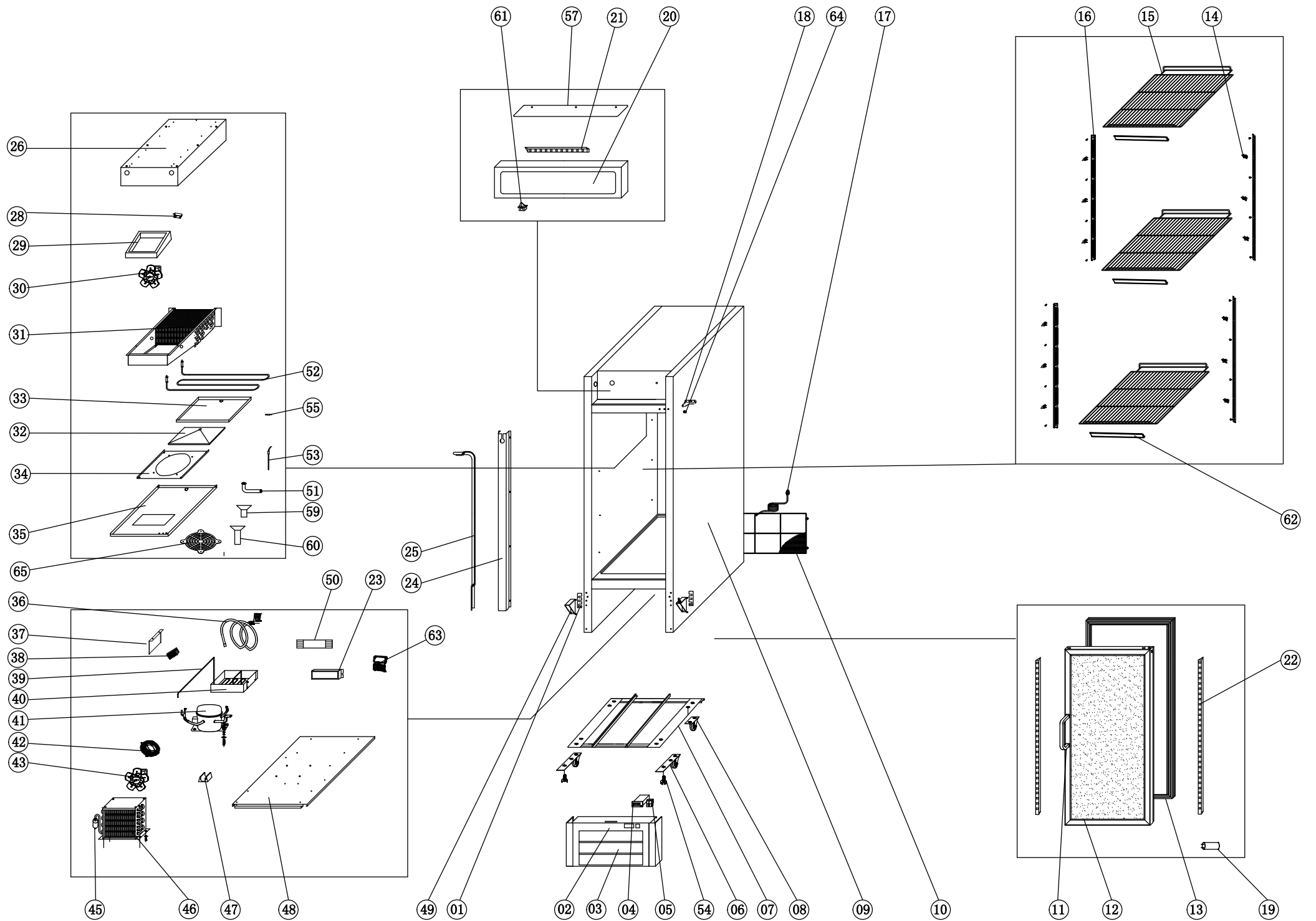




**PARTS LIST**  
**REACH-IN MODELS**  
**EGD-1DF-12-HC, EGD-1DF-16-HC**

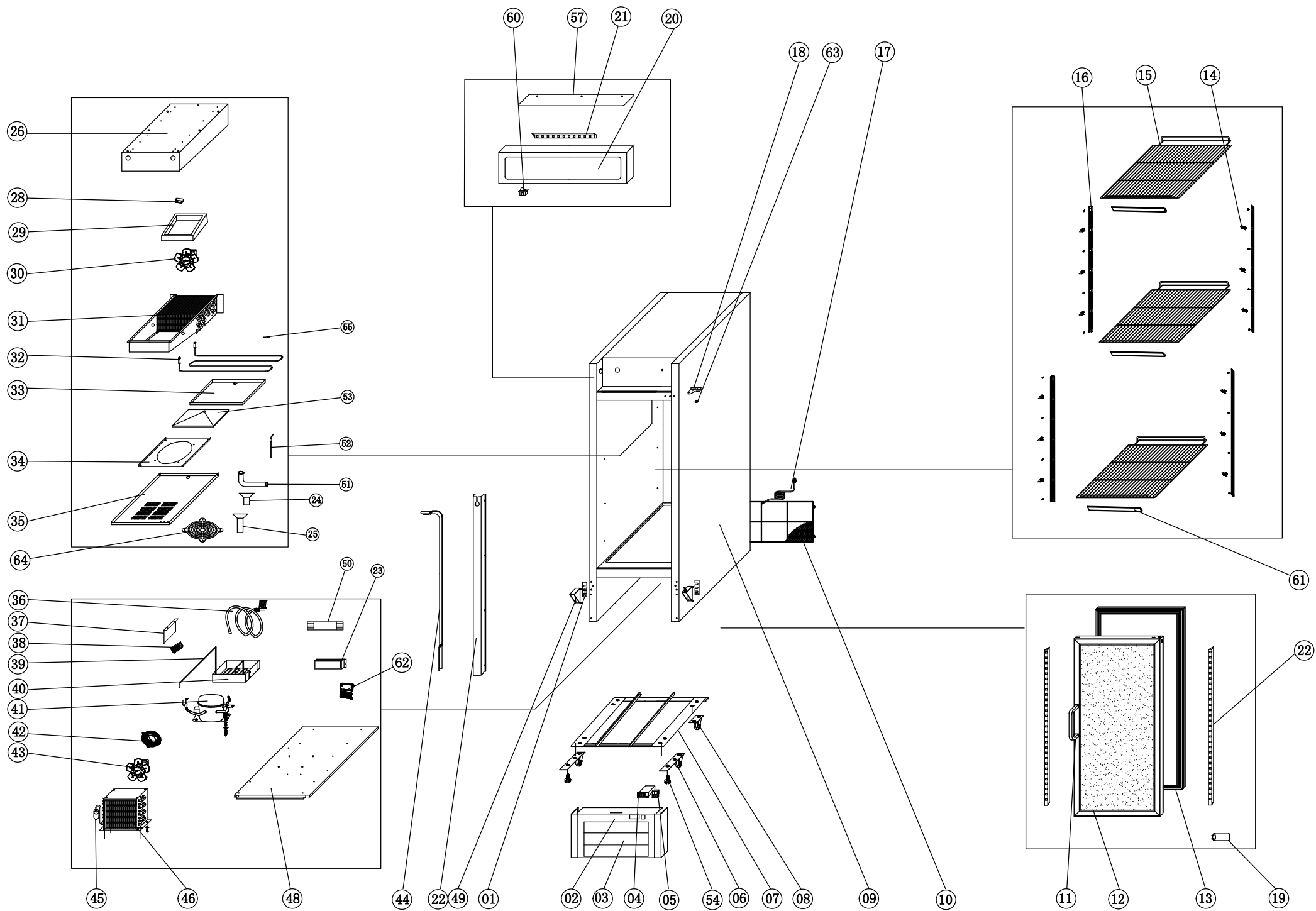


**Above picture of EGD-1DF-12-HC  
(R290)**



**EGD-1DF-12-HC**

NO.	PART #	DESCRIPTION	QTY.
1	G20045	DOOR SHIM	2
2	H00340	DOOR LOCK	1
3	H5114000666	SHROUD, LOWER BOTTOM MOUNT	1
4	HC0219-3	TEMPERATURE CONTROL BOARD (DIXELL XW06K 4N1F0 40A)	1
4	HC0219-2	TEMPERATURE CONTROL DISPLAY (DIXELL CX50)	1
4	H00206	TEMPERATURE SENSOR	2
5	C2194692	LIGHT SWITCH	1
6	G20030K	FEET KIT (INCLUDES 2 WITH STOP, 2 FIXED- ALL 1" ROLLERS)	2
7	N/A	CASTER SUPPORT CHANEL	1
8	G20030K	FEET KIT (INCLUDES 2 WITH STOP, 2 FIXED- ALL 1" ROLLERS)	1
9	N/A	BODY	1
10	G20012	LOWER REAR GUARD	1
11	H107140020	DOOR HANDLE	1
12	GHC0112	GLASS DOOR	1
13	GHC0021	GASKET	1
14	C3234860	PILASTER CLIP	16
15	H00416	SHELF	3
16	H04343	PILASTER	2
17	C2194684	POWER CORD, 14AWG/NEMA 5-15P	1
18	GHC20040	DOOR HINGE UPPER	PAIR
19	GLED006	LED POWER SUPPLY	1
20	GHC60112-1	LAMP COVER	1
20	N/A	LIGHT BOX STICKER	*
21	GLED004	LED LAMP	1
22	GLED001L	LED STRIP LEFT	1
22	GLED001R	LED STRIP RIGHT	1
23	G10006	LED POWER SUPPLY	1
24	GHC2015	SUCTION PIPE COVER	1
25	HDV012A	VERTICAL SUCTION PIPE+CAPILLARY A	1
26	N/A	PANEL	1
28	H00335	SENSOR CLIP	1
29	N/A	AIR GUIDE	1
30	HC0116	EVAPORATOR FAN MOTOR (WHITE BLADES) YZF10-20 (DC 13V, 4W 0.35A, CW, 1450RPM) L=1200	1
31	HC0355F	EVAPORATOR COIL	1
32	N/A	SUPPORT PAN	1
33	C30015	CONDENSER DRAIN BOX	1
34	HGC3012	EVAPORATOR FAN MOTOR SUPPORT	1
35	GHC50012	EVAPORATOR FAN COVER	1
36	HDV0016B	HELIX SUCTION PIPE+CAPILLARY B	1
37	N/A	BRACKET	1
38	H00215	TERMINAL BLOC, 5 POLL	1
39	N/A	Discharge Pipe	1
40	C30018	CONDENSER DRAIN BOX	1
41	HC0015F	COMPRESSOR (EMC3140U) W/FILTER DRIER	1
41	H00229	COMPRESSOR START KIT (EMC3140U)	1
42	H00113-1	FAN GUARD BLACK (CONDENSER)	1
43	H00110	CONDENSER FAN MOTOR, 9W M4Q045-CA27-04/CA01	1
45	H00341	FILTER DRIER	1
46	HC0346	CONDENSER COIL	1
48	N/A	SUPPORT PANEL	1
49	G00335	DOOR HINGE LOWER RIGHT	1
49	G00334	DOOR HINGE LOWER LEFT	1
50	GLED003	LED POWER SUPPLY	1
51	H00336	DRAIN JOINT	1
52	HC1205	DEFROST HEATING ELEMENT	1
53	H00211	DRAIN PIPE HEATER (13W)	1
54	G20030K	FEET KIT (INCLUDES 2 WITH STOP, 2 FIXED- ALL 1" ROLLERS)	2
55	H00207	FUSE, THERMAL, DEFROST	1
57	GHC60012	LAMP COVER PROTECTER	1
59	G30001	DRAIN PIPE FITTING	1
60	G30002	DRAIN PIPE FITTING	1
61	HC10015	DOOR SWITCH	1
62	GHC40021	LABEL SUPPORT	3
63	H108140044	CONTROL PROTECTOR	1
63	H108140043	CONTROL PROTECTOR COVER	1
64	G20043	HINGE AXIS BUSHING	1
65	H03335	SENSOR CLIP	1



**EGD-1DF-16-HC**

NO.	PART #	DESCRIPTION	QTY.
1	G20045	DOOR SHIM	2
2	H00340	DOOR LOCK	1
3	H5114000666	SHROUD, LOWER BOTTOM MOUNT	1
4	HC0219-3	TEMPERATURE CONTROL BOARD (DIXELL XW06K 4N1F0 40A)	1
4	HC0219-2	TEMPERATURE CONTROL DISPLAY (DIXELL CX50)	1
4	H00206	TEMPERATURE SENSOR (NTC TYPE)	2
5	C2194692	LIGHT SWITCH	1
6	G20030K	FEET KIT (INCLUDES 2 WITH STOP, 2 FIXED- ALL 1" ROLLERS)	2
7	N/A	CASTER SUPPORT CHANNEL	1
8	G20030K	FEET KIT (INCLUDES 2 WITH STOP, 2 FIXED- ALL 1" ROLLERS)	2
9	N/A	BODY	1
10	G20012	LOWER REAR GUARD	1
11	H107140020	DOOR HANDLE	1
12	GHC0116	GLASS DOOR	1
13	GHC0016	GASKET	1
14	C3234860	PILASTER CLIP	16
15	H00416	SHELF	3
16	H00342	PILASTER	8
17	C2194684	POWER CORD, 14AWG/NEMA 5-15P	1
18	GHC20040	DOOR HINGE UPPER	1
19	GLED006	LED POWER SUPPLY	1
20	GHC60112-1	LAMP COVER	1
20	N/A	LIGHT BOX STICKER	*
21	GLED004	LED LAMP	1
22	GLED002L	LED STRIP LEFT	1
22	GLED002R	LED STRIP RIGHT	1
23	G10006	LED POWER SUPPLY	1
24	G30002	DRAIN PIPE FITTING	1
25	G30001	DRAIN PIPE FITTING	1
26	N/A	PANEL	1
28	H00335	SENSOR CLIP	1
29	N/A	AIR GUIDE	1
30	HC0116	EVAPORATOR FAN MOTOR (WHITE BLADES) YZF10-20 (DC 13V, 4W 0.35A, CW, 1450RPM) L=1200	1
31	HC0355F	EVAPORATOR COIL	1
32	HC1205	DEFROST HEATING ELEMENT	1
33	C30015	CONDENSER DRAIN BOX	1
34	HGC3012	EVAPORATOR FAN MOTOR SUPPORT	1
35	GHC50012	EVAPORATOR FAN COVER	1
36	HDV0016B	HELIX SUCTION PIPE+CAPILLARY B	1
37	N/A	BRACKET	1
38	H00215	TERMINAL BLOC, 5 POLL	1
39	N/A	Discharge Pipe	1
40	C30018	CONDENSER DRAIN BOX	1
41	HC0015F	COMPRESSOR (EMC3140U) W/FILTER DRIER	1
41	H00229	COMPRESSOR START KIT (EMC3140U)	1
42	H00113-1	FAN GUARD BLACK (CONDENSER)	1
43	H00110	CONDENSER FAN MOTOR, 9W M4Q045-CA27-04/CA01	1
44	HDV016A	VERTICAL SUCTION PIPE+CAPILLARY A	1
45	H00341	FILTER DRIER	1
46	HC0346	CONDENSER COIL	1
48	N/A	SUPPORT PANEL	1
49	G00335	DOOR HINGE LOWER LEFT	1
49	G00334	DOOR HINGE LOWER LEFT	1
50	GLED003	LED POWER SUPPLY	1
51	H00336	DRAIN JOINT	1
52	H00211	DRAIN PIPE HEATER (13W)	1
53	N/A	SUPPORT PAN	*
54	G20030K	FEET KIT (INCLUDES 2 WITH STOP, 2 FIXED- ALL 1" ROLLERS)	1
55	H00207	FUSE, THERMAL, DEFROST	1
57	GHC60012	LAMP COVER PROTECTER	1
59	GHC2016	SUCTION PIPE COVER	1
60	HC10015	DOOR SWITCH	1
61	GHC40021	LABEL SUPPORT	3
62	H108140044	CONTROL PROTECTOR	1
62	H108140043	CONTROL PROTECTOR COVER	1
63	G20043	HINGE AXIS BUSHING	1
64	H03335	SENSOR CLIP	1



For Tech Support or Parts Call:

1-704-900-2068

Website: <https://www.entree.biz>