

PUSH PLATE BUTTON



10PBJ1



10PBR1



10PBRLL



10PBR451



10PBS1

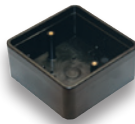


10PBS451

- Perfect for wall applications
- Beveled edges provide a tamper and vandal proof solution to your push plate needs, preventing objects from jamming between plate and box
- An all-active plate activates with a “push” anywhere on the button surface
- Stainless steel finish will not deteriorate where it is touched and is scratch & scuff resistant
- Text and logo are baked on for extreme durability
- All buttons can be made “Wireless” by using 10TD433PB3V transmitter & 10RD433 receiver

MFG #	DESCRIPTION	EZ #
10PBJ1	1-1/2" x 4-3/4" Jamb, Handicap Logo & Push To Open Text	091140
10PBR1	6" Round, Handicap Logo & Push To Open Text	091133
10PBR451	4-1/2" Round, Handicap Logo & Push To Open Text	091135
10PBRLL	6" Round, Large Handicap Logo Only	102108
10PBS1	4-3/4" Square, Handicap Logo & Push To Open Text	091139
10PBS451	4-1/2" Square, Handicap Logo & Push To Open Text	091137

ELECTRICAL DOUBLE GANG BOX



- Perfect for wall applications
- Beveled edges provide a tamper and vandal proof solution to your push plate needs, preventing objects from jamming between plate and box
- An all-active plate activates with a “push” anywhere on the button surface
- Stainless steel finish will not deteriorate where it is touched and is scratch & scuff resistant
- Text and logo are baked on for extreme durability
- All buttons can be made “Wireless” by using 10TD433PB3V transmitter & 10RD433 receiver

MFG #	DESCRIPTION	EZ #
10BOX45SQSM	4-1/2" Square Surface Style Mount Box	091138

SURFACE MOUNT BACK BOX



10BOXJAMSM



10BOX6RNDISM



10BOX45RNDISM

- Perfect for wall applications
- Beveled edges provide a tamper and vandal proof solution to your push plate needs, preventing objects from jamming between plate and box
- An all-active plate activates with a “push” anywhere on the button surface
- Stainless steel finish will not deteriorate where it is touched and is scratch & scuff resistant
- All buttons can be made “Wireless” by using 10TD433PB3V transmitter & 10RD433 receiver

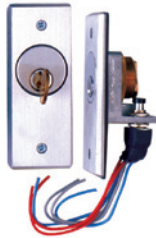
MFG #	DESCRIPTION	EZ #
10BOXJAMSM	1-1/2" x 4-3/4" Surface Style Mount Box	091141
10BOX6RNDISM	6" Round, Surface Style Mount Box	091134
10BOX45RNDISM	4-1/2" Round, Surface Style Mount Box	091136

B

KEY SWITCHES



CM1000



CM2000

- Accepts standard mortise cylinders 1", 1-1/8" & 1-1/4" (cylinder sold separately)
- Weather resistant heavy duty 1/4" thick aluminum one piece die cast construction
- Locators prevent cylinder from spinning
- Vandal resistant
- Provides 1 or 2 switch configurations & left/right operation
- Colour coded 18 AWG soldered leads
- UL/CSA approved switches: Single throw momentary normally open switch supplied rated for 4 amps @ 24VDC

APPLICATIONS

Indoor & outdoor, electronic locks, electromagnetic locks, electric strikes, monitors, shunting, bypassing, timed functions, activating/deactivating CCTV, access control equipment & other applications

CM 1000

- Size: 4-1/2"H x 2-3/4"W x 2"D
- Wall, pipe or pedestal, weather resistant surface mount
- Includes a weather resistant utility box with a 1/2" threaded opening and close-up, heavy duty rubber gasket, brass cylinder lock ring, 4 socket/slotted screws, and 2 tamper proof screws and security driver

CM 2000

- Size: 4-1/2"H x 1-3/4"W x 1-1/2"D
- Only 1-3/4" wide flush mount switch, perfect for door frame or narrow areas
- Includes a brass lock ring, 2 socket/slotted screws, 2 tamper proof screws and security driver

MFG #	DESCRIPTION	EZ #
CM1000	Surface Mount Switch Box	036125
CM2000	Narrow Stile Switch	080388
CM1000/30	Replacement Switch For CM1000 & CM2000	036124

HANDICAP OPERATOR PUSHBUTTON SWITCHES



CM45 2



CM60 2



CM25 2



CM250 2



CM280 2

Durable stainless steel construction with tamper resistant fastening on all active units. UL61058-1, IEC 61058-2-4 and CAN/CSA-C22.2 compliant.

APPLICATION

- **CM25 2, CM250 2:** Mounts in aluminum jamb or in surface boxes
- **CM45 2:** Mounts in a single or double gang box
- **CM60 2:** Mounts in a single or double gang, and 4" x 4" box (with included adapter plate)
- **CM280 2:** Mounts in a single gang box

ACTUATION

- **CM25 2, CM45 2, CM60 2:** All-active design requires minimal actuation force & meets handicap requirements as well as withstanding high traffic
- **CM250 2, CM280 2:** 1" red button requires minimal actuation force and meets handicap requirements

SWITCH SPECIFICATION

- **CM25 2:** UL/CSA approved SPST N.O. switch rated 3 amps @ 120VAC
- **CM250 2, CM280 2, CM45 2, CM60 2:** UL/CSA approved SPDT N.O. switch rated 15Amp @ 125VAC

MFG #	TYPE	SIZE	EZ #
CM25 2	All Active	1-5/8"W x 4-1/2"H	081813
CM250 2	Standard	1-5/8"W x 4-1/2"H	081816
CM280 2	Standard	2-3/4"W x 4-1/2"H	081817
CM45 2	All Active	4-1/2" W x 4-1/2"H	081814
CM60 2	All Active	6" Diameter	081815

TAMPER RESISTANT KEY SWITCH

R



960



960N

- Extruded clear aluminum 1/4" plate with beveled edges
- UL rated switches are SPDT and can be used for Normally Open (NO) or Normally Closed (NC) applications
- Contacts are rated at 3A@125 VAC, 1A@250VAC
- Can mount 2 switches on easy lock-down dual-switch bracket
- For 1-1/8" mortise cylinders with straight or clover cams (not supplied)
- Supplied with spanner screws & wrench

960

- Size: 3" x 4-3/4"

960N

- Size: 1-5/8" x 4-3/4"

MFG #	TYPE	MOUNTING	EZ #
960MO28	Momentary	Gang	028498
960MA28	Maintained	Gang	028499
960N MA28	Maintained	Narrow Stile	090391
960N MO28	Momentary	Narrow Stile	029192
96MO	Momentary Switch Only		090888
96MA	Maintained Switch Only		090889

HANDICAP EXIT BUTTONS & SWITCHES



909

- Monetary action switch standard

909

- 2-3/8" x 2-3/8"
- Surface mount under desk or counter for concealment

916/ 916N

- 916: 3" x 4-3/4", 916N: 1-5/8" x 4-3/4"
- Ideal for Request-To-Exit (REX) applications
- 20 gauge stainless steel faceplate

917

- 2-3/4" x 4-1/2"
- Totally weatherproof
- Solid state/no moving parts
- Pressure sensitive, momentary function

950HP4/6

- 4-1/2" or 6" round
- Ideal for Request-To-Exit (REX) applications
- Stainless steel faceplate



916



916N



917



950HP4/6

MFG #	MOUNTING	BUTTON TYPE	EZ #
909S MO	Wall	Beige With Embossed Key	036915
916 MO 28	Gang	Blue Embossed Handicap	036916
916N MO 28	Narrow Stile	Blue Embossed Handicap	036917
917 28	Gang	Red "Push to Exit"	071414
918 MO 28	Gang	Red Embossed "Exit"	036918
918N MO 28	Narrow Stile	Red Embossed "Exit"	036919
950HP4MO	Gang	4" Stainless Embossed Handicap	071416
950HP6MO	Junction	6" Stainless Embossed Handicap	071415