

1974 CATALOG

SERVING ARCHERS IN SCHOOLS / CAMPS / RECREATION

CADET
BFB

CUSTOM QUALITY BOWS by YORK

SUPER CREST
WRZ

CREST
RRS

CRESCENT
GBF

SEE INSIDE BACK COVER FOR HUNTING BOWS

SUPER CREST

The **Super Crest** is a tournament caliber bow at a remarkably low price. The handle section of contrasting imported and domestic hardwood is contoured for maximum shooting stability and comfort. From tip to tip this bow shows superb craftsmanship.

No. WRZ—*AMO length 68 in.
Weights 25 to 45 lbs.
Draw limit — 32 in.
Brace height 8 in.
Installed stabilizer bushing
Available Right or Left Hand

CREST

The **Crest** is a wise choice for the target and field archer. Its versatility, beauty and fine shooting qualities are unsurpassed. The handle section of select imported and domestic hardwood gives this bow the combination of eye-catching beauty and top performance archers demand.

No. RRS—*AMO length 66 in.
Weights 25 to 45 lbs.
Draw limit — 32 in.
Brace height 8 in.
Available Right or Left Hand

CRESCENT

The **Crescent** is an excellent first bow for the adult and is highly recommended for camps and schools. A budget-priced bow that gives real shooting satisfaction, the **Crescent** has a contoured American walnut handle which gives it a look of luxury that belies its modest price.

No. GBF—*AMO length 66 in.
Weights 20 to 45 lbs.
Draw limit — 30 in.
Brace height 8 in.
Available Right or Left Hand

CADET

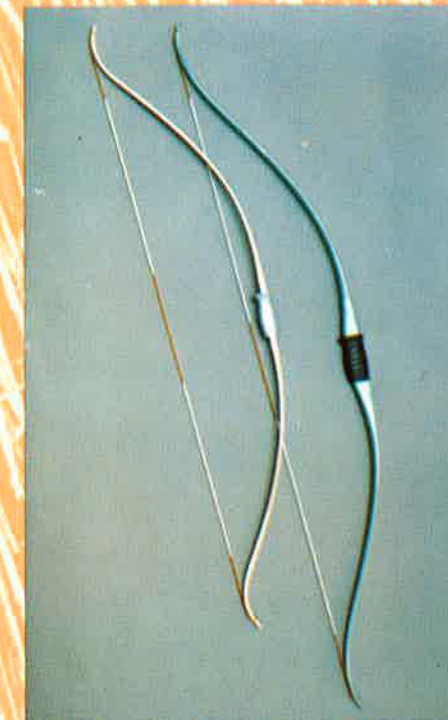
The **Cadet** is a handsome bow that is a pleasure to shoot. It is "first choice" with camps and schools because it is a true quality composite bow that gives shooting comfort and the good looks of a contoured handle of rich American walnut.

No. BFB—*AMO length 62 in.
Weights 20 to 40 lbs.
Draw limit — 28 in.
Brace height 7 in.
Available Right or Left Hand

*Standardized bow length as established by the Archery Manufacturers Organization (AMO). Your assurance of quality.

UNBREAKABLE FIBERGLASS BOWS by YORK

YORK fiberglass bows are especially recommended for camps and schools. Weather conditions will not affect their performance, and they are *unconditionally guaranteed against breakage*. These fine bows are equipped with molded contoured grips that eliminate hand fatigue, and dual arrow rests so both right- and left-handed archers can use them.



RECURVED BOWS

Recurved 60 in. Bow

Dual arrow rest. Available in weights 20/25/30/35/40/45 lbs. at 28 inch draw.
Catalog No. RG-60

Recurved 54 in. Bow

Dual arrow rest. Approximately 25 lbs. at 26 inch draw. Recommended for boys and girls 14 years of age and under.
Catalog No. RG-54

STRAIGHT LIMB BOWS

YORK straight limb bows are favored by camps and schools. Their flat limb style permits easy stringing and unstringing, and they are less sensitive to shoot than recurve bows.

Straight 64 in. Bow

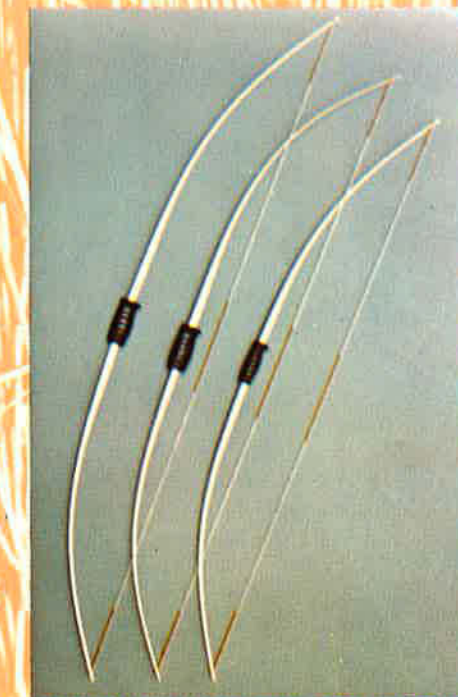
Dual arrow rest. Available in weights 20/25/30/35/40 lbs. at 28 inch draw.
Catalog No. SG-64

Straight 60 in. Bow

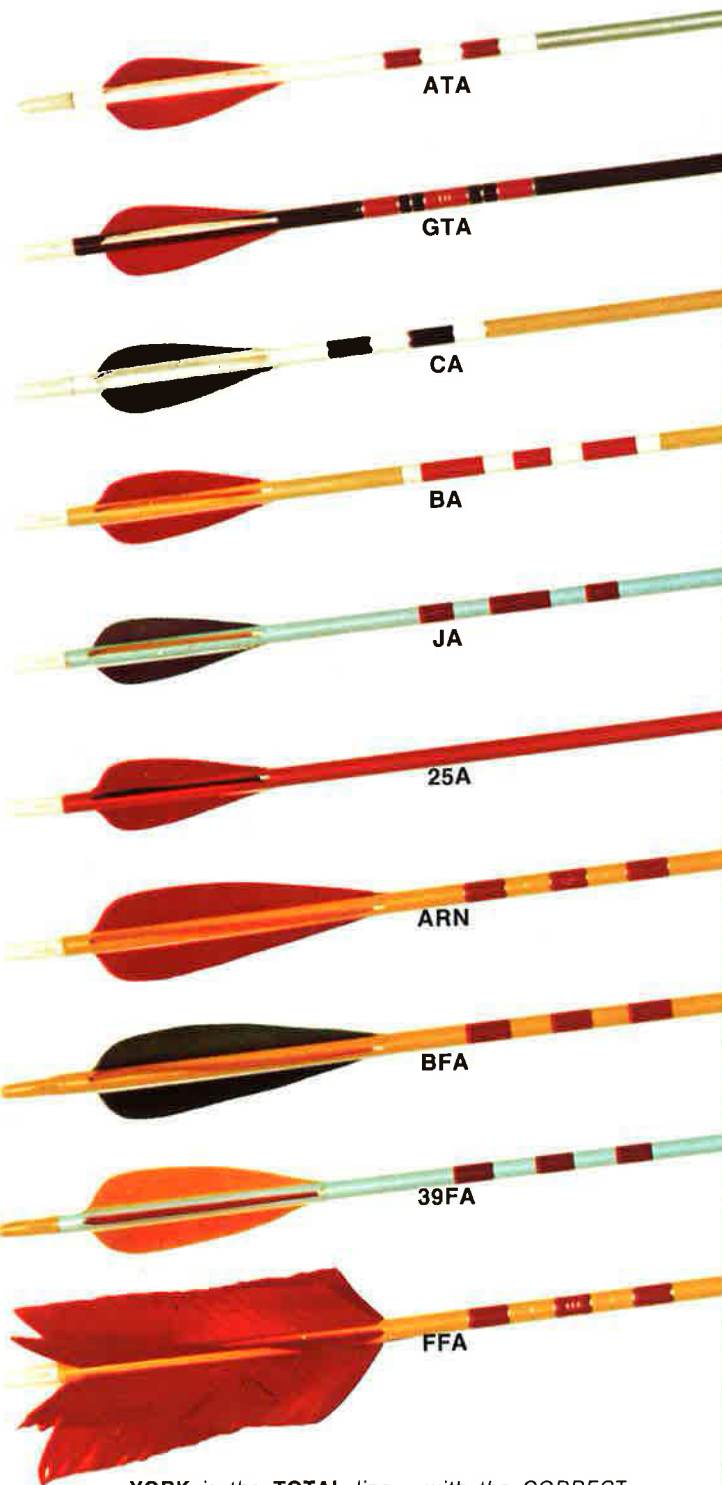
Dual arrow rest. Available in weights 20/25/30/35/40 lbs. at 28 inch draw.
Catalog No. SG-60

Straight 54 in. Bow

Dual arrow rest. Available in approximately 25 lb. weights at 26 inch draw. Recommended for boys and girls 14 years of age and under.
Catalog No. SG-54



ARROWS by YORK



YORK is the TOTAL line - with the CORRECT equipment for archers of all skills, from beginners to bowhunters, school programs to top tournaments.



Arrows by YORK
SEE INSIDE BACK COVER FOR HUNTING and FISHING ARROWS

TARGET ARROWS

MATCHED ALUMINUM tournament quality target arrow. Made from Easton/Swift aluminum tubing, matched to precise weight and spine tolerance. Colored white with multi-colored hand cresting. For bow weights 25 to 45 lbs. Available in 26, 28, 29 and 30 inch lengths. *State arrow length and bow weight when ordering.*

No. ATA dozen

MATCHED FIBERGLASS target arrow. A high quality fiberglass arrow made from Dura-fiber shafts, matched in weight and spine for precision shooting. Green shafts with multi-colored hand cresting. For bow weights 25 to 45 lbs. Available in 26, 28, 29, and 30 inch lengths. *State arrow length and bow weight when ordering.*

No. GTA dozen

MATCHED CEDAR target arrow. These deluxe arrows are made of choice Port Orford Cedar shafts and matched for accurate shooting. They are equipped with parallel target points, plastic nocks and parabolic shaped fletching. Colored white and crested in six standard color combinations. For bow weights 20 to 40 lbs. Available in 24, 26, 28, and 30 inch lengths. *State arrow length and bow weight when ordering.*

No. CA dozen

STANDARD CEDAR target arrow. These arrows are highly recommended for camps and schools. Finished in clear lacquer and brightly crested in six standard color combinations. Fitted with parallel points, plastic nocks and parabolic shaped feathers. Supplied in 24, 26, 28, and 30 inch lengths. Packed one length only per box. Recommended for bows 20 to 40 lbs.

No. BA dozen

No. BA-1 gross

No. BA-2 half-gross

PRACTICE TARGET ARROWS

BEGINNERS' PRACTICE arrow. Brightly colored Port Orford cedar shafts with contrasting crest. Bullet points and plastic nocks. Supplied in 26 and 28 inch lengths only. Not recommended for bows over 40 lbs. Available in gross and half-gross display packs only.

No. JA-1 gross

No. JA-2 half-gross

ECONOMY TARGET arrow. Full colored Port Orford cedar shafts with bullet points, plastic nocks and 3 inch fletching. Supplied in 26 and 28 inch lengths only. Not recommended for bows over 40 lbs. Available in gross and half-gross display packs only.

No. 25A-1 gross

No. 25A-2 half-gross

Practice target arrows are packed all 26 inch or all 28 inch, or in standard packs of one-half each length. Please specify pack desired when ordering.

FIELD ARROWS

DELUXE CEDAR field arrow. Select Port Orford cedar shafts matched to close tolerance in weight and spine. Fletched with 5 inch helical feathers with 5" taper core field points. Full colored shaft with multi-colored crest. Supplied in 29 and 31 inch lengths only. For bow weights to 55 lbs. *State arrow length and bow weight when ordering.*

No. ARN dozen

STANDARD CEDAR field arrow. Full colored Port Orford cedar shafts with contrasting crest. Non-skid field points and 5 inch helical fletching. Supplied in 29 inch length only. For bow weights 40 to 50 lbs. only.

No. BFA dozen

No. BFA-B 4 dozen pack

PRACTICE CEDAR field arrow. A budget-priced Port Orford cedar field arrow. Full color shaft with contrasting crest, non-skid field points and 4 inch fletching. Not recommended for bows over 40 lbs. Available in half-gross display packs only.

No. 39FA-2 half-gross

FLU-FLU arrow. Port Orford cedar shaft with six feather fletching for proper braking action. Full color shaft with multi-color cresting and non-skid point. Supplied in 29 inch length only.

No. FFA 4 to a box



You always get quality merchandise, outstanding design and superb packaging from YORK.

TOURNAMENT SIDE QUIVER has large zipper pocket, score card and pencil holder, and arrow divider thong. Double hang straps with snap fasteners for ease in attaching to belt.

No. TFQ-P each

DELUXE SIDE QUIVER Large size, quality made of heavy duty vinyl. Has clip for attaching to belt. Highly recommended for camps and schools.

No. LQ-20 each

ECONOMY SIDE QUIVER of serviceable vinyl for beginners. Budget-priced, yet rugged enough to withstand seasons of abuse. Wide loop for attaching to belt.

No. AQ-17 each

GROUND QUIVER for target shooting. Detachable aluminum head, steel support rod. Quiver has loop for arrows, rack for holding bow.

No. WQ each

ELASTIC BACK GLOVE with cowhide tips, adjustable strap. Extra large, large, medium and small. State size when ordering.

No. AG-26 each

ECONOMY ARCHERY GLOVE is first choice of camps and schools. Vinyl back, cowhide fingertips, adjustable strap. Extra large, large, medium and small. State size when ordering.

No. AG-24 each

PRO-STYLE TAB is diecut from cowhide, has smooth leather lining. Fits middle finger comfortably. Small, medium or large. State size when ordering.

No. AG-19 each

BEGINNER'S SHOOTING TAB is diecut from genuine cowhide. In small, medium, or large. State size when ordering.

No. AG-22 each

WESTERN STYLE TAB is same quality as AG-22 but in Western style. Small, medium or large. State size when ordering.

No. AG-17 each

DELUXE VENTILATED TARGET ARM GUARD affords maximum protection yet is ventilated for hot weather comfort. Three full length steel stays, two adjustable elastic straps for fastening.

No. AG-31 each

STANDARD TARGET ARM GUARD of heavyweight leather with center steel stay for protection. Two adjustable elastic straps for fastening.

No. AG-10 each

ECONOMY TARGET ARM GUARD is a wise choice for camps and schools. Made of heavy duty vinyl with a center stay for protection. Two adjustable elastic straps for fastening.

No. AG-20 each

SAME style as AG-20, but with single hook and strap for fastening.

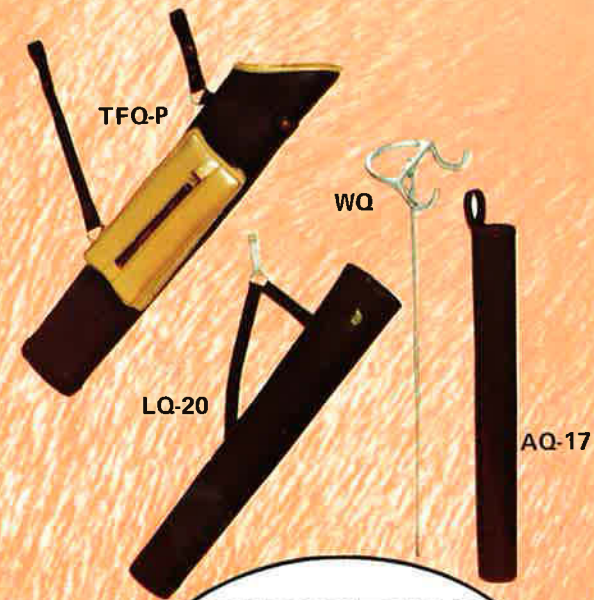
No. AG-15 each

TRAINING ARM GUARD gives extra protection to beginners. Protects wrist and keeps sleeve away from bowstring. Tough vinyl, with adjustable elastic straps.

No. AG-50 each

HUNTING ARM GUARD of genuine cowhide is lined with imitation suede. Three elastic adjustable straps. Two steel stays for wrist protection.

No. HG-40 each



SHOOTING ACCESSORIES by YORK





ACCESSORIES by YORK

PRO BOWSIGHT is improved, removable model with double adjustment. Sight accepts prism, pins or double wire aperture. Equipped with water proof tape for calibrating.

No. M-50 each

PRO BOWSIGHT with windage and elevation adjustment.

No. M-10 each

BULLET-TYPE ARROW POINT 5/16 inch inside diameter.

No. BP-30 dozen

PARALLEL ARROW POINT 5/16 inch outside diameter.

No. PP-50 dozen

SPECIAL NON-SKID blunt nosed field point. 11/32" diameter. 5" taper core.

No. SNS-35 dozen

PLASTIC ARROW NOCKS. 11/32 inch diameter.

No. PN-11 dozen

PLASTIC ARROW NOCKS. 5/16 inch diameter.

No. PN-16 dozen

BRUSH BUTTONS. Large size. Slipped onto bowstring ends, they prevent bowstring and bow limb intersection from hanging on brush in hunting.

No. BBL pair

BOWSTRING WAX 1-ounce cake.

No. BW each

BOWSTRINGER. For safely and easily bracing any bow up to 70 pounds without danger of twisting limbs. Blister packaged on card.

No. BS each

FLETCHING CEMENT. Made by Easton especially for aluminum shafts. All purpose, also for wood, glass, leather, cloth and china. 1 3/4 oz. tube.

No. M-25 each

DOUBLE LOOP BOWSTRINGS. Dacron. Served at loops and at the center. Specify bow length and weight when ordering.

No. DS Bowstrings. Specify AMO standard lengths.

52"	58"	64"	70"
54"	60"	66"	
56"	62"	68"	

SINGLE LOOP BOWSTRINGS. Dacron. Served at the arrow nocking area. If nock-to-nock bow length cannot be determined exactly, order single loop strings, as plain end permits adjustment. Available in four lengths.

No. RS-1 for bow 56 to 60 in.

No. RS-2 for bow 60 to 64 in.

No. RS-3 for bow 64 to 68 in.

No. RS-4 for bow 68 to 70 in.

LOW PRICE HEMP BOWSTRINGS. Braided, single loop. One size, for bows to 70 inches in length.

No. FS

NOCKING POINTS. Shrinks easily and securely to bowstring with application of heat. Provides positive nocking point.

No. STN Pkg. of 4

ARROW REST. A Hoyt Flex rest that is ready to apply in seconds with pressure sensitive tape.

No. AR each

BOW TIP PROTECTORS of tough vinyl plastic. Protect bowtips and hold string in place.

No. PBT pair

RAZORHEAD INSERTS.

No. AP-7 dozen

ADAPTA-FIELD POINT.

No. AP-9 dozen

HUNTING BOWS and ACCESSORIES



HUNTING ARROWS

ALUMINUM hunting arrow. "Game getter" green anodized Easton aluminum shaft. Fitted with Adapta-Point inserts and screw-in razor head point. Fletched with 5 inch helical feathers. Multi-colored cresting. Supplied in 29 and 31 inch lengths, for bow weights to 60 lbs. *State arrow length and bow weight when ordering.*

No. AHA dozen

FIBERGLASS hunting arrow. Top performance Dura-Fiber shaft to meet all hunting conditions. Fitted with Adapta-Point inserts, screw-in razor head. Fletched with 5 inch helical feathers. Multi-color cresting. Supplied in 29 and 31 inch lengths, for bow weights 40 to 60 lbs. *State arrow length and bow weight when ordering.*

No. GHA dozen

DELUXE cedar hunting arrow. Select matched Port Orford cedar shafts. Fletched with 5 inch helical feathers and fitted with Razorhead points. Full color shafts with multi-color cresting. Supplied in 29 and 31 inch lengths only, for bow weights 40 to 60 lbs. *State arrow length and bow weight when ordering.*

No. HA dozen

STANDARD cedar hunting arrow. Choice Port Orford cedar shafts. Fletched with 5 inch helical feathers and fitted with 3-bladed HP-3 broadhead. Arrow is full colored with contrasting crest. Supplied in 29 and 31 inch lengths, for bow weights 40 to 60 lbs. *State arrow length and bow weight when ordering.*

No. HAS dozen

Same as standard hunting arrow above but full length, less point.

No. HAS-FL dozen

REVERSIBLE BARB FISH Arrow has solid fiberglass shaft. Special fishing point has reversible barb to allow easy extraction of arrow from fish. Waterproof rubber fletching and brilliant crest. Drilled hole provides for attachment of line. Length 30 in. only.

No. GFA each (sold in multiples of 6 only)

HUNTING and FISHING POINTS

THREE BLADED MA-3 broadhead made with radial edge for better penetration and ease of sharpening.

No. HP-3 Pkg. of 3

SPECIAL FISHING POINT has reversible barb for easy removal from fish. 5/16" diam. Parallel core.

No. DFP each



THUNDERBOLT

The **Thunderbolt** is the "pioneer" of short hunting bows; no other short hunting bow can outperform it. The handle is constructed of contrasting imported and domestic hardwoods, carefully contoured for unsurpassed shooting smoothness and power. A bowhunter's dream of a bow!

No. RRH—*AMO length 54 in. Weight 45 to 60 lbs. Brace height 7 1/2 in. Draw limit 30 in. Available right or left hand

TRACKER

The **Tracker** gives you a handful of power to take hunting anywhere. Top quality design, hefty American walnut handle, plus unexcelled YORK craftsmanship, combine to give this bow exceptional performance to meet every hunting challenge.

No. MPH—*AMO length 58 in. Weight 40 to 55 lbs. Brace height 8 in. Draw limit 30 in. Available right or left hand

*Standardized bow length as established by the Archery Manufacturers Organization (AMO). Your assurance of quality.

SHOULDER STYLE HUNTING QUIVER with roomy, zippered pocket. Finely crafted of heavy duty vinyl. Has arrow divider strap and adjustable shoulder strap.

No. HQ-22 each

FISHING REEL is made of aluminum with flange mounting bracket. Easily taped to bow. Designed for snag-proof uncoiling of line. Reel comes complete with 60 feet of 72 lb. test line.

No. M-55 each

STALKER BOW QUIVER is molded of can't-scratch material with formed slots that easily slide over the limbs of the bow. Holds six arrows ready for action. No screws, clamps or tape required.

No. WBQ pair

SIDEWINDER BOW QUIVER is the first choice of hunting archers. Made of aluminum, it is lightweight but still rugged enough to meet every hunting condition. Adjusts to fit any size bow. Custom hood keeps broadheads safe and silent. Can be used by right or left handed archers. The Sidewinder is quickly mounted to your bow handle, using the handle inserts and mounting screws provided. Offered in both 6- and 10-arrow models. Please specify which when ordering.

No. BQ-6 holds 6 arrows each

No. BQ-10 holds 10 arrows each

SILENCER of weather-resistant neoprene. Mount concentrically on bowstring and effectively quiet twang.

No. NBS pair



BQ-6

TARGETS, STANDS and FACES by YORK

T-50

MG

TF-36

PF-48

CT-16F

TP

SKIRTED TARGET FACE in four colors with skirt and draw string, making it easy to apply to target mat. Of a spun woven synthetic material, it is waterproof and non-glaring.

No. TF-48 48 inch each
No. TF-36 36 inch each

SQUARE TARGET FACE made of same material as above, but square and unskirted. Attach with YORK No. TP Target Pins for best results.

No. SF-48 48 inch each
No. SF-36 36 inch each

PAPER TARGET FACES in four colors on heavy stock non-glare paper. Supplied rolled, no folds. For best results, attach with YORK No. TP Target Pins.

No. PF-48 48 inch each
No. PF-36 36 inch each
No. PF-24 24 inch each
No. PF-16 16 inch each

CORRUGATED BOX TARGET is handy for beginners, makes up into 18 x 18 x 4 in. box. Stuff with papers or rags then tape closed. Four-color face on main panel.

No. CT-16 16 inch each
No. CT-16F 16 inch each

Same as CT-16 except set up and filled with corrugated filler.

(sold only in multiples of 2)

TARGET STAND of soft Philippine mahogany to protect arrows.

No. T-50 for 36 inch each
No. T-60 for 48 inch each

TARGET MATS are tournament approved. Of Indian cord grass, covered with burlap. Chemically treated for longer life, greater stopping power and resistance to vermin.

No. MG-48 48 inch 70 lbs. each
No. MG-36 36 inch 40 lbs. each
No. MG-24 24 inch 20 lbs. each

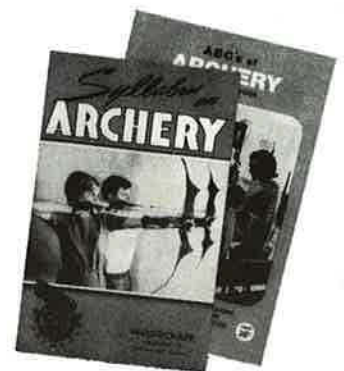
TARGET FACE PINS have new "easy in" lock design. One quarter turn locks pin and face securely to target mat. Large head holds face firmly, even in high winds.

No. TP pack of 4

The YORK Guarantee

Every YORK product is guaranteed to be free of defects in workmanship and materials. Any item which appears defective, and shows no evidence of mishandling or misuse, should be sent prepaid direct to YORK Archery, Independence, Missouri, for replacement or repair.

In over half a century of making fine archery equipment, YORK has developed a team of designing skill and production know-how that is unsurpassed in the industry. It is this team that makes the YORK Guarantee possible.



FREE! to teachers, coaches and dealers

Two booklets on archery basics — form, choosing the proper equipment, tips on instruction, etc. *ABC's of Archery* from AMO, *Syllabus on Archery* by the seasoned veterans at YORK. Please send your requests on school or company letterhead.

OVER HALF A CENTURY OF SERVICE TO THE ARCHER
P.O. BOX 110 • INDEPENDENCE, MO. 64051 • (816) 252-9612

