

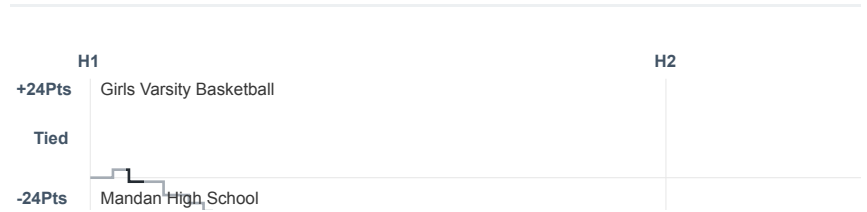
Box Score Report

BHS vs Mandan - Feb 12, 2019 - L 47-57

Period Stats

Team	1	2	Final
BHS	19	28	47
MHS	40	17	57

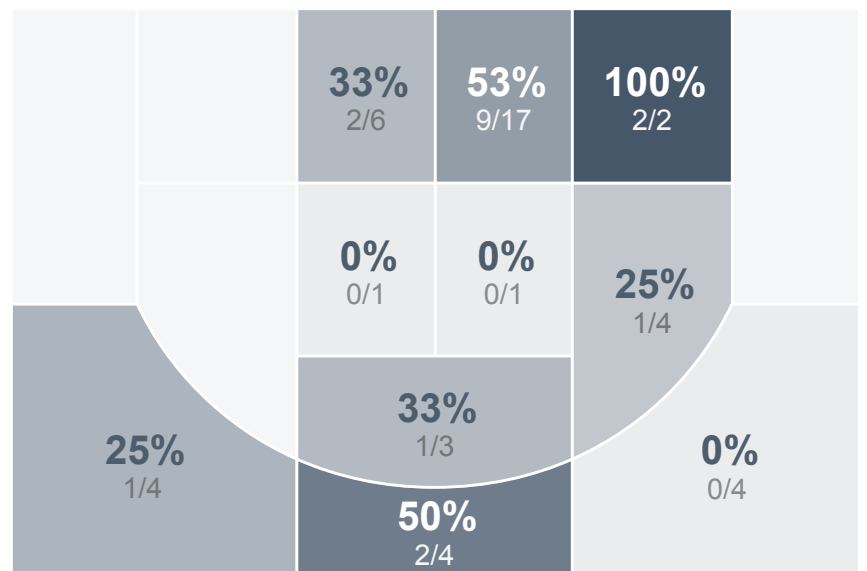
Run Graph



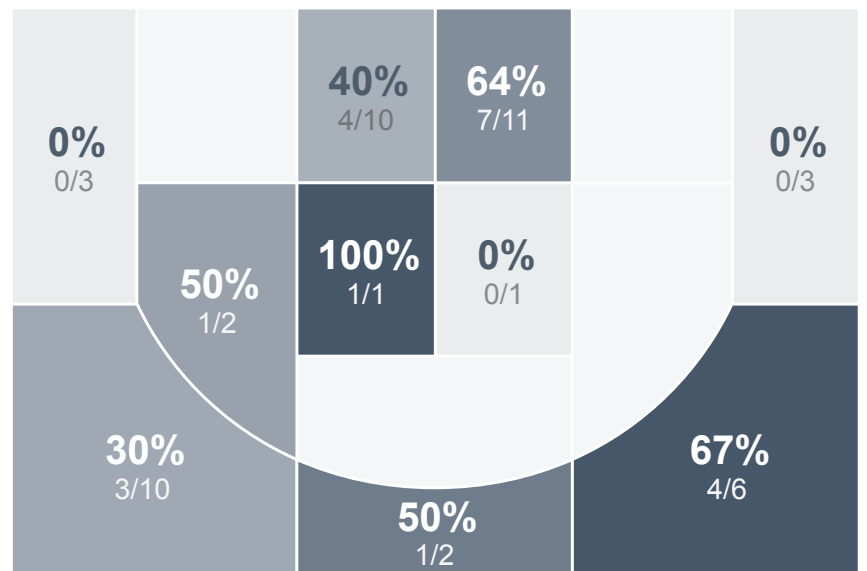
Team Stats

	BHS	MHS
Field Goal %	39.1%	42.9%
Effective Field Goal %	42.4%	51.0%
2FG Made/Attempted	15/34	13/25
2FG%	44.1%	52.0%
3FG Made/Attempted	3/12	8/24
3FG%	25.0%	33.3%
FT Made/Attempted	8/10	7/13
Free Throw Percentage	80.0%	53.8%
Points Per Possession	0.77	0.95
Transition Points	4	11
Points Off Turnovers	10	24
Second Chance Points	8	10
Points in the Paint	22	24
Offensive Rebounds	9	9
Defense Rebounds	23	19
Assists	12	10
Deflections	7	6
Steals	10	8
Blocks	3	1
Turnovers	19	14
Personal Fouls	15	13
Charges Taken	0	2

Girls Varsity Basketball



Mandan High School



Girls Varsity Basketball's Player Stats

Name	Pts	FG	3FG	FT	+/-	MINS	OREB	DREB	AST	DEFL	STL	BLK	TO	FOUL	CHG
#3 Elle Hill	4	1/4	0/1	2/2	-3	16	3	4	1	0	1	0	1	4	0
#5 Mandie Picard	0	0/6	0/3	0/0	-1	11	2	0	0	0	1	0	1	1	0
#11 Maddy Steckler	0	0/2	0/1	0/0	-8	20	1	0	4	0	0	0	4	2	0
#15 Hannah Golus	12	4/6	1/2	3/3	+2	20	1	3	1	3	2	1	2	4	0
#20 Cadee Ryckman	10	4/7	2/4	0/0	-3	29	1	4	1	0	2	0	1	1	0
#21 Dani Korsmo	6	2/5	0/0	2/4	-8	23	0	4	1	2	0	1	3	1	0
#22 Jilee Golus	2	1/2	0/0	0/0	+4	4	0	0	0	1	0	0	1	1	0
#24 Lindsey Wilz	0	0/0	0/0	0/0	+2	1	0	0	1	0	0	0	0	0	0
#25 Olivia Dickerson	8	4/9	0/0	0/0	-15	25	0	5	2	0	2	0	2	0	0
#33 Makensie Maher	5	2/4	0/1	1/1	-15	17	0	1	0	0	1	0	2	0	0
#34 Megan Henderson	0	0/1	0/0	0/0	-5	15	0	2	1	1	1	1	2	1	0

Mandan High School's Player Stats

Name	Pts	FG	3FG	FT	+/-	MINS	OREB	DREB	AST	DEFL	STL	BLK	TO	FOUL	CHG
#5 Liz Goodhart	0	0/0	0/0	0/0	+8	13	0	1	2	1	0	0	1	2	0
#15 Kennedy Harris	14	5/12	1/6	3/6	+5	31	0	1	5	0	1	0	1	0	1
#22 Megan Zander	25	9/17	4/8	3/5	+7	29	3	7	0	1	2	1	2	1	0
#25 Piper Harris	4	2/4	0/1	0/0	+3	10	0	0	0	0	0	0	0	0	0
#34 Lakyn Darras	4	1/6	1/2	1/2	+11	28	3	5	1	1	1	0	2	2	0
#35 Lauren Gangl	0	0/1	0/1	0/0	+4	15	0	1	0	0	1	0	1	1	0
#40 Taylor Leingang	2	1/2	0/1	0/0	-2	19	0	1	1	0	0	0	1	2	0
#42 Janie Berger	5	2/5	1/3	0/0	-5	22	1	1	0	2	2	0	3	1	1
#44 Sydney Gustavsson	3	1/2	1/2	0/0	+19	14	0	0	1	1	1	0	1	4	0