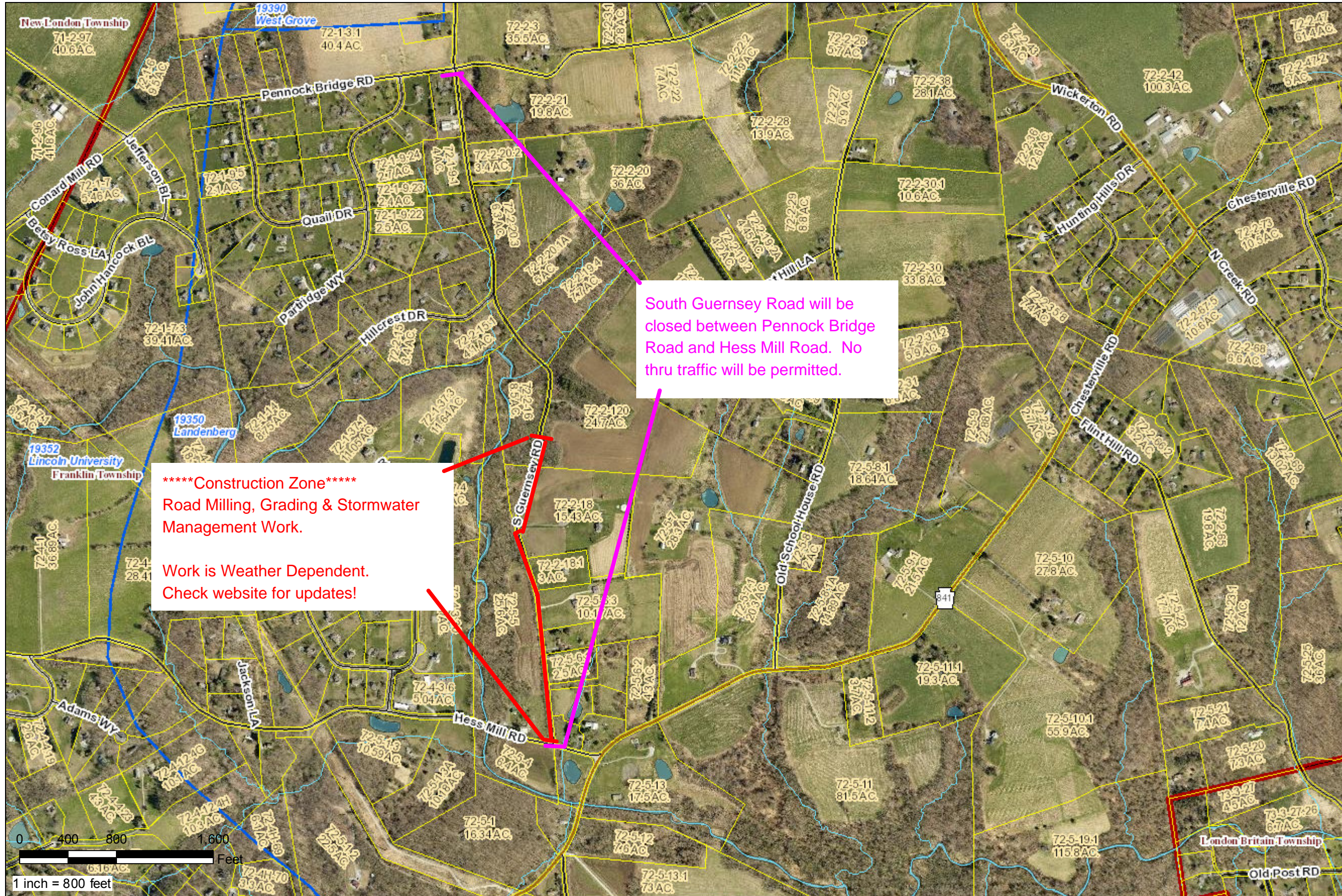


South Guernsey Road

COUNTY OF CHESTER  
PENNSYLVANIA



South Guernsey Road will be closed between Pennock Bridge Road and Hess Mill Road. No thru traffic will be permitted.

\*\*\*\*\* Construction Zone \*\*\*\*\*  
Road Milling, Grading & Stormwater Management Work.  
  
Work is Weather Dependent.  
Check website for updates!

Those residents who live within the Construction Zone will experience significant delays.

The Landenberg Post Office will be able to deliver mail within the Construction Zone and will experience significant delays.

The Township has notified 911 & Emergency Services.



Map Created:  
Thursday, July 4, 2019

County of Chester



Limitations of Liability and Use:  
County of Chester, Pennsylvania makes no claims to the completeness, accuracy, or content of any data contained herein, and makes no representation of any kind, including, but not limited to, the warranties of merchantability or fitness for a particular use, nor are any such warranties to be implied or inferred with respect to the information or data furnished herein. For information on data sources visit the GIS Services page listed at [www.chesco.org/gis](http://www.chesco.org/gis).