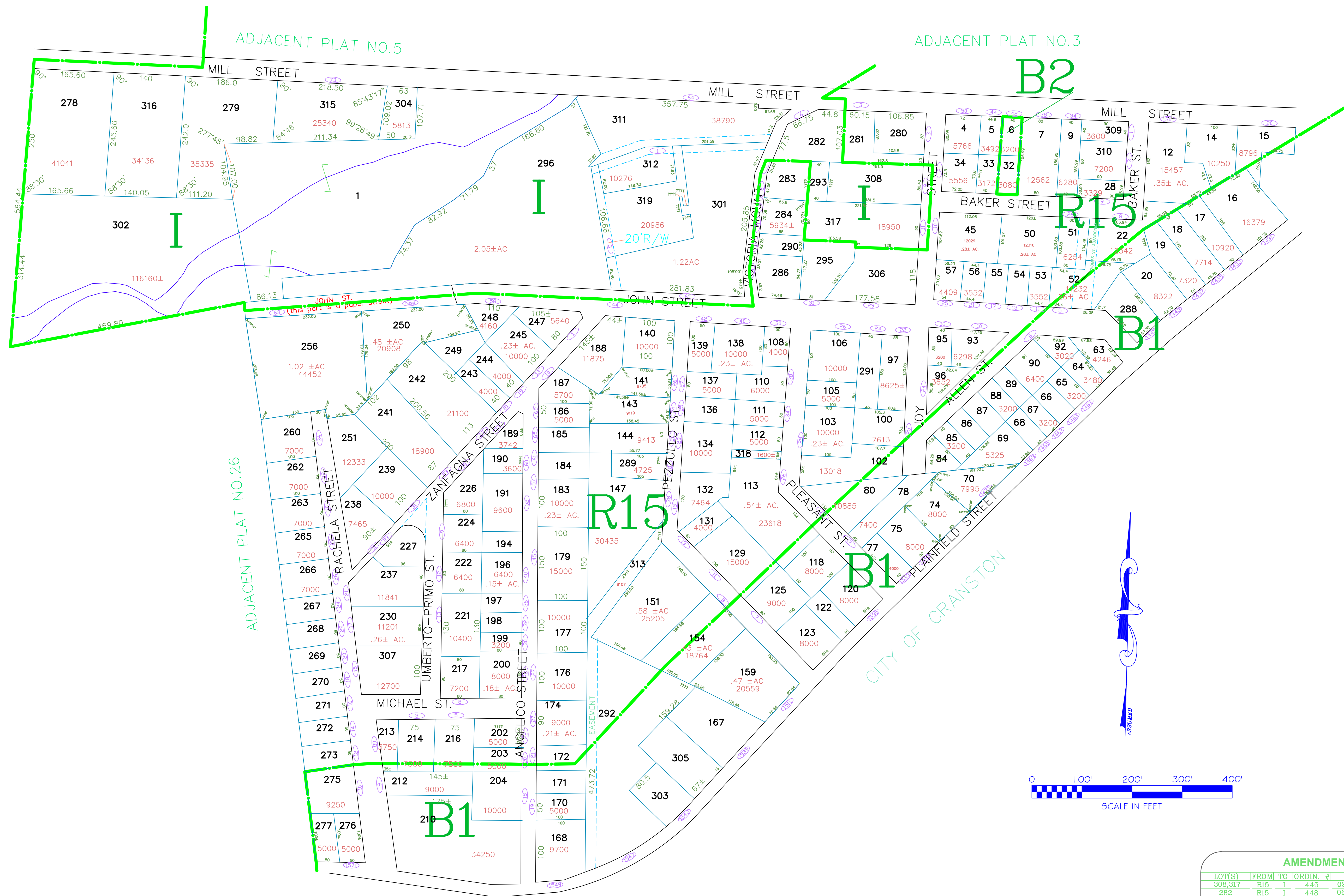


ASSESSOR'S MAP

SHOWING ZONING DISTRICTS



AMENDMENTS					
LOT(S)	FROM	TO	ORDIN. #	DATE	NOTE
308,317	R15	I	445	02/11/80	WITH STIP.
282	R15	I	448	06/09/80	-
6,32	R15	B2	487	02/08/82	-
293	R15	I	562	04/08/85	-

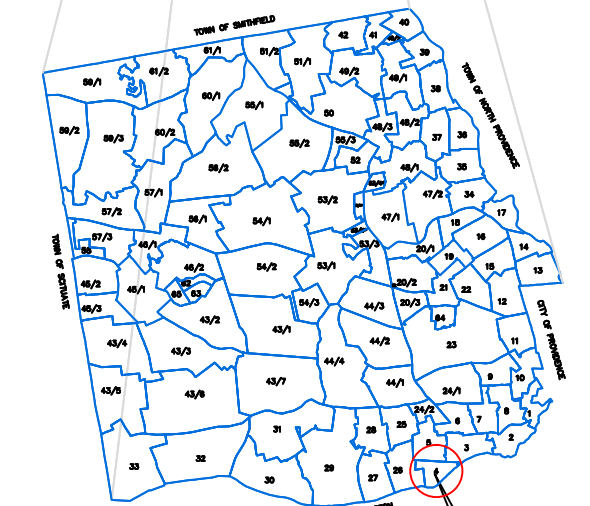
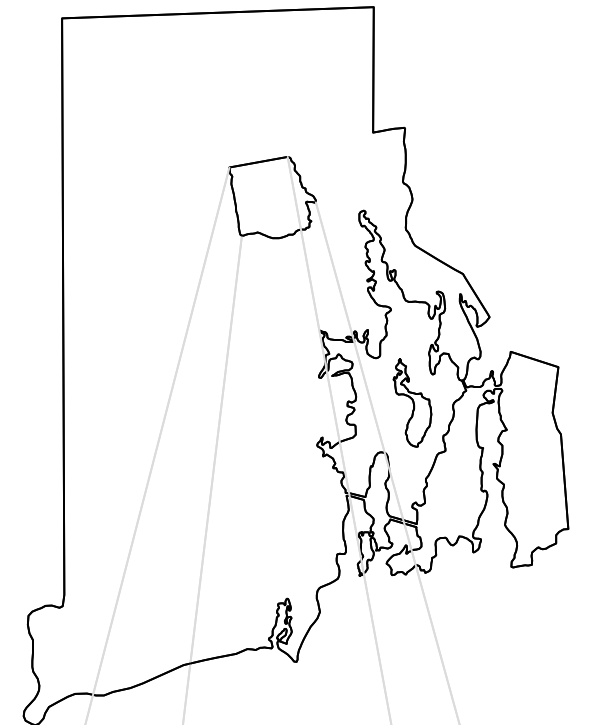
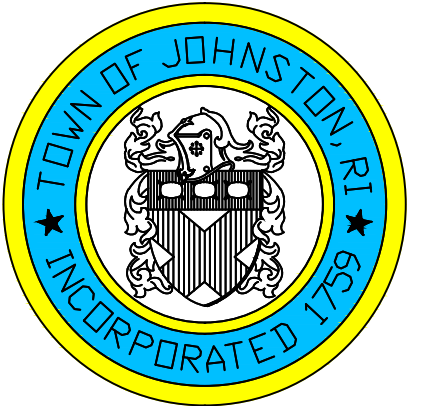
Assessor's Plat Number

4

STATE OF RHODE ISLAND
TOWN OF JOHNSTON

PROVIDENCE COUNTY
INCORPORATED 1759

ASSESSOR'S OFFICE
1385 HARTFORD AVENUE
JOHNSTON, RHODE ISLAND
02919



PLAT INDEX
AREA

Scale: 1:100

Revised By: Benjamin Ng

Last updated: January 04, 2016

Date printed: January 04, 2016

For copies of plat maps, please go to the DPW at 100 Irons Avenue Johnston Rhode Island. Thank you.

NOTE: This map was prepared for the use of the Town of Johnston for assessment and illustrative purposes only. It does not represent a survey of the premises. No liability is assumed as to the sufficiency or accuracy of the data delineated hereon.