

**Mouse Anti-Villin [CWWB1]: MC0578**

**Intended Use:** For Research Use Only

**Description:** Villin is a 95 kD glycoprotein of microvilli associated with rootlet formation in gastrointestinal mucosal epithelium. Anti-villin labels the brush border area in the gastrointestinal mucosal epithelium. This antibody has been useful in differentiating gastrointestinal adenocarcinoma, neuroendocrine carcinomas, and ovarian adenocarcinomas from adenocarcinomas of other organs. This antibody also labels Merkel cells of the skin.

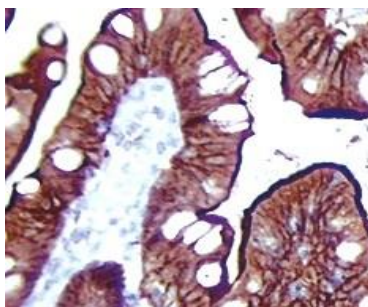
**Specifications**

Clone: CWWB1  
Source: Mouse  
Isotype: IgG1  
Reactivity: Human  
Localization: Membrane, cytoplasm  
Formulation: Tissue culture supernatant in PBS pH7.5, containing 0.2% BSA, 15mM sodium azide (NaN3)  
Storage: Store at 2°- 8°C. For longer periods of storage, store at -20°C. Avoid repeat freeze-thaw cycles  
Applications: IHC  
Package:

Description	Catalog No.	Size
Villin Concentrated	MC0578	1 ml

**IHC Procedure**

Positive Control Tissue: Colon  
Concentrated Dilution: 25-100  
Pretreatment: Citrate pH6.0 or EDTA pH8.0, 15 minutes using Pressure Cooker, or 30-60 minutes using water bath at 95°-99°C  
Incubation Time and Temp: 30-60 minutes @ RT  
Detection: Refer to the detection system manual  
\* Result should be confirmed by an established diagnostic procedure.



FFPE human small intestine stained with anti-Villin using DAB

Doc. 100-MC0578  
Rev. A