



U.S. Edition

# Sage 50 Quantum Accounting 2013

## Successfully Manage Your Operations and Stay Ahead of Trends

Experience a new level of accounting and business management with the ease of use of an out-of-the-box solution—at an affordable price. Sage 50 Quantum Accounting 2013 enables you to manage all aspects of your business, including accounting, customers, inventory, services, jobs and employees—all in one centralized system.

Compared to mid-market solutions, Sage 50 Quantum Accounting offers a lower total cost of ownership:

- Don't pay thousands of dollars more for functionality you may not need or use
- Avoid the high cost of mid-market implementation, training, and maintenance
- Ability to accommodate 5 to 40 users<sup>1</sup>

Compared to other small business products, Sage 50 Quantum Accounting offers:

- Depth of functionality
- Improved speed and database capacity
- Business intelligence tools to monitor your performance

### Meet the Evolving Needs of Your Business

Sage 50 Quantum Accounting is a multi-functional accounting and business management solution that offers strengths in the following areas:

- Financial Management
- Customer Management
- Inventory Management
- Vendor Management
- Employee/Payroll Management
- Jobs Management
- Business intelligence/Reporting
- Workflow Management
- Multi-User Management Security
- Features specific for your industry: Professional Services, Manufacturing, Distribution, Construction, and Nonprofit



### WHY CHOOSE SAGE 50 QUANTUM ACCOUNTING?

#### Value

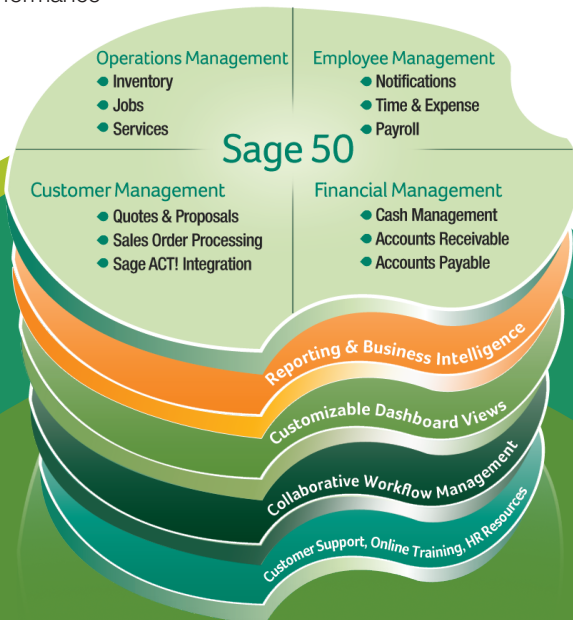
Sage 50 Quantum Accounting provides a total business management system that offers just the right amount of functionality at an affordable price.

#### Performance

Supports business growth through greater performance, capacity, and scalability.

#### Peace of Mind

Offers the flexibility, security, and support to run your business with confidence. And as your business grows you can rely on other Sage products throughout the life of your business.



## Make More Informed Decisions

Use the analysis tools offered in Sage 50 Quantum Accounting to help you better manage your finances:

- **Analysis and Reporting Tools**—Achieve and maintain financial health with the Cash Flow Manager and Collections Manager. Recognize opportunities and monitor trends using the 140+ built-in reports. Or, create customized reports using Sage 50 Business Intelligence, a powerful Microsoft® Excel®-based reporting solution that integrates with Sage 50 Quantum Accounting.
- **Internal Accounting Review**<sup>2</sup>—Run up to audit 15 checks on your data at any time to find potential mistakes.
- **Audit Trails**—Record transaction changes and track each entry by user to deter fraud.

## Implement Centralized Business Management

Sage 50 Quantum Accounting provides for all your core accounting needs—plus, it incorporates functional and collaborative tools and features that help you run your operation more efficiently.

### Order Process Workflow

From one centralized place, easily track all the moving parts of your order process, so nothing gets missed. Also, notify the next person in the process with a status and specific notes as needed. Automatically send notifications to designated employees, customers, or vendors once a task is completed.

### Centralized Management Centers

Sage 50 Quantum Accounting is your one-stop shop for managing each customer, inventory item, service item, or job. Get the details fast with customizable dashboard views, and highlight the information you need to better serve your customers, as well as make more informed, more profitable business decisions.

## Personalized Dashboards

Each user can create customized dashboards to organize key, real-time information and access it easily. View relevant tasks and filter data based on how you need to track it.


## Multi-User Management

- Accommodates 5, 10, 15, 20, 30, or 40 licensed, named users<sup>1</sup>
- Strong role-based security down to the screen level
- Optimized database capacity with no hard limits on database size<sup>3</sup>

## Enjoy Peace of Mind Knowing You're Always Current and Supported

Sage 50 Quantum Accounting comes with automatically delivered upgrades, support, and training with our Sage Business Care Silver Plan.<sup>4</sup> You'll get:

- **The latest version of Sage 50 Quantum Accounting**, with upgrades and updates for as long as you're enrolled.
- **Unlimited<sup>5</sup> access to our highest level of Customer Support Analysts** via phone and email for your Sage 50 solution including Microsoft Excel support<sup>6</sup>.
- **The training tools you need**, with access to Sage University's Anytime Learning courses available online, 24 hours a day, seven days a week. Plus receive invitations to exclusive web-based training sessions.
- **A dedicated account manager** who knows your business needs and can provide relevant advice and answers to your questions.



For more information visit  
[www.Sage50Accounting.com/Quantum](http://www.Sage50Accounting.com/Quantum)

<sup>1</sup> Multi-user licenses available in packs of 5, 10, 15, 20, 30, or 40. A maximum of 40 licensed, named users is allowed. Only the first 40 named users selected in the user maintenance screen are considered licensed, named users. <sup>2</sup> Sage is not liable or responsible for any fines or penalties that may result from errors in your company accounting records. The Internal Accounting Review is not intended to uncover all questionable transactions. <sup>3</sup> Sage 50 does not impose a hard limit on database capacity, however, individual performance will vary depending on actual number of transactions, database size, and number of concurrent users. Data management efficiencies are also realized in the Sage 50 Accounting 2013 products. <sup>4</sup> To ensure continuous service, your Sage Business Care plan is an automatically renewing plan and subsequent years will be automatically billed to the same credit card each year on the anniversary date of your purchase at the then current rate after notifying you 30 days in advance of your anniversary date. Renewal is not required for continuous access to product updates for supported versions. You may terminate the plan with at least seven calendar days notice prior to your renewal date and not be charged for the renewal. <sup>5</sup> Customer Support Analysts are available from 8:30 am until 8:30 pm ET Monday-Friday, and reserve the right to limit calls to one hour or one incident. <sup>6</sup> Sage will assist with the management of Sage 50 data in Microsoft Excel 2003, 2007 and 2010.