

# PRECISION

## ENGINEERING

PORTLAND, VIC

### PORTLAND PRECISION ENGINEERING

P: (03) 5523 6155 M: 0427 527 328

- MAINTENANCE & REPAIR
- FABRICATION & INSTALLATION
- DESIGN, ENGINEERING & MANUFACTURING

[www.portlandprecision.com.au](http://www.portlandprecision.com.au)

***Fast response time - Quality workmanship - Superior value***

Portland Precision Engineering has earned an outstanding reputation in the Southwest Victorian Engineering and Maintenance markets for consistently serving its clients with Responsiveness, Quality, Value and Innovation. We are a full-service company with Design & Engineering, Fabrication and Maintenance & Repair capabilities.

The Portland Precision workforce consists of trade certified Mechanical Fitters, Machinists, Boilermakers, Mechanics, Apprentices and Trades Assistants. We also employ Crane Operators, Riggers, and Plant & Equipment Operators. Also on staff are a Mechanical Engineer with AutoCAD proficiency and a Project Coordinator.

Portland Precision Engineering are critical to the regions industrial base providing preventive maintenance and urgent repairs to Facilities, Machinery, Equipment and Mobile Plant across several sectors including Timber/Fibre, Road Transport, Aluminium, Fertilizer, Wind Energy and Food Production.

Located just blocks away from the Port of Portland, Portland Precision Engineering are experts in Road Transport Maintenance with a rich history of truck & trailer repair, trailer modifications & conversions and custom design of transport equipment. Including transportable tip-through bins for wood chips.

## ***Serving Road Transport Clients for over 25 Years***

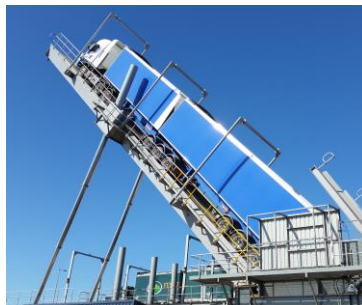
### ***Urgent Trailer Repairs***

- Structural & Mechanical
- On-call 24/7

***Preventative Maintenance  
Trailer Modification/Conversion  
Custom Design & Fabrication***



***Tip thru wood chip bins for skeletal trailers designed & fabricated by Portland Precision Engineering***



**6 Cellana Court (PO Box 135), Portland VIC 3305 ABN: 97 141 067 781**  
**eMail: [jon@portlandprecision.com.au](mailto:jon@portlandprecision.com.au) Mobile: 0488 180 645**





## **URGENT TRAILER REPAIRS**

### *Structural*

- Crack repairs
- Structure refurbish/replacement

### *Mechanical*

- Pneumatic, hydraulic, electrical

*24/7 response*



## **PREVENTATIVE MAINTENANCE**

*Inspections*

*Servicing*

*Mechanical repairs*

*Documentation*



## **MODIFICATIONS/CONVERSIONS**



## **CUSTOM DESIGN & MANUFACTURING**



6 Cellana Court (PO Box 135), Portland VIC 3305 ABN: 97 141 067 781  
eMail: [jon@portlandprecision.com.au](mailto:jon@portlandprecision.com.au) Mobile: 0488 180 645