



Small, Serene, Simply Garnett.

City Commission Meeting

AGENDA

March 28, 2023, 6:00 P.M.

- I. **Call to Order of the Regularly Scheduled City Commission Meeting (6:00 p.m.)**
 - A. Pledge of Allegiance
 - B. Invocation, Daniel Meyer, First Baptist Church

- II. **Governing Body Comments**
 - A. Commissioner Locke
 - B. Commissioner Cole
 - C. Mayor Sheahan

- III. **Consent Agenda**
 - A. Approval of Minutes from March 14, 2023 Regular City Commission Meeting
 - B. Approval of Semi-Monthly Bills and Payroll in the amount of \$162,794.77

- IV. **Regular Business**
 - A. Consideration of the Special Use Permit Application for Matt Bahnsen at 815 W. 7th Avenue.
 - B. Consideration of the Special Use Permit Application for Glenn Baumann at 800 N. Maple.
 - C. Consideration of Plan Review Approval for Structural and Site Plan layout for Harold Gilbreth at 219 S. Maple.

- V. **Discussion Items**
 - A. Homeless followup/continuation
 - B. Truck Routes
 - C. Walker Art Committee vacancy
 - D. Swimming Pool
 - E. City Manager Contract

- VI. **Informational Items**
 - A. The Egg Drop Easter Egg Hunt, hosted by the Garnett Church of the Nazarene, with the help of the Garnett Industrial Airport, will be held at the Garnett Industrial Airport on April 1.
 - B. Spring City Wide Garage Sale Day & Sidewalk Sales, hosted by Garnett Publishing, will be held on April 8.
 - C. Garnett Farmers' Market Season, hosted by the Garnett Farmers Market, will be held on every Main Street every Thursday from May 4 – October 5.
 - D. The 50th Annual Square Fair Crafts Festival, hosted by Garnett BPW, will be held on the Courthouse Lawn on May 13.
 - E. The Celebration of Service, hosted by Garnett Tourism, will be held on the Town Square and Courthouse Lawn as well as at the Garnett Public Library, on May 18.
 - F. The Avenue of Flags, hosted by the Garnett Parks & Recreation Department, will be held at the Garnett Municipal Cemetery May 26-30.
 - G. The Memorial Day Service, hosted by American Legion Post 48 and VFW Post 6397, will be held at the Garnett Municipal Cemetery on May 30.

- VII. **Citizens to be Heard (Five-Minute Time Limit Per Person)**

- VIII. **Adjournment**

March 14, 2023

The Governing Body of the City of Garnett met in regular session on March 14, 2023, at 6:00 p.m. with the following individuals present; Jason Sheahan, Mayor; Jody Cole and Mark Locke, City Commissioners; Travis Wilson, City Manager; Terry Solander, City Attorney; and Trish Brewer, City Clerk.

CALL TO ORDER

Mayor Sheahan called the meeting to order at 6:00 p.m.

The Pledge of Allegiance was recited, followed by Art Black, giving the invocation.

RECOGNITION

Monica Wurtz presented Jeff Mucklow, completion of KRWA Apprenticeship. Mr. Mucklow is the second Water Operator with the City of Garnett to complete the program.

GOVERNING BODY COMMENTS

- *Commissioner Locke*

Stated he would like more information on the asphalt zipper email. Suggested that Commissioners look at the pool and pool building.

- *Commissioner Cole*

Stated she agrees that the pool needs attention. Requested an update on Maple Street, new businesses going in.

- *Mayor Sheahan*

Updated Commissioner Cole on the Flywheelers TGT request from last meeting. Requested City Manager Wilson to contact McClure and Danny Coltrane with Mid-West Engineering, requesting them to attend the April 11, 2023 Commission Meeting.

CONSENT AGENDA

- A. Approval of Minutes from February 28, 2023, Regular City Commission Meeting
- B. Approval of Semi-Monthly Bills and Payroll in the amount of \$243,539.17

Commissioner Locke, motioned to approve the Consent Agenda. Seconded by Commissioner Cole.

Motion passed (3) AYE (0) NAY

REGULAR BUSINESS

- **Presentation by Greg Crow, Fidelis Energy**

Mr. Crow gave a presentation of what and how Fidelis Energy can assist the City of Garnett in their purchase and distribution of Gas.

Commissioner Cole motioned to terminate agreement with KMGGA, giving authority to City Manager, Wilson to negotiate an early release of contract with KMGGA. Seconded by Commissioner Locke.

Motion passed (3) AYE (0) NAY

Commissioner Locke motioned for City Attorney, Solander; City Manager, Wilson to work with Mr. Crow, Fidelis Energy a plan of transition and contract to present to the Commission. Seconded by Commissioner Cole. Motion passed (3) AYE (0) NAY

- **Consideration of TGT Applications from Garnett BPW**

Mayor Sheahan motioned to approve the TGT Application as approved by the Tourism Committee. Seconded by Commissioner Cole. Motion passed (3) AYE (0) NAY

Mayor Sheahan motioned to approve the special event requests. Seconded by Commissioner Locke

Motion passed (3) AYE (0) NAY

- **Consideration of Musselman & Hall proposal for North Lake Culvert.**

Commissioner Locke motioned to accept the proposal for the North Lake Culvert. Seconded by Commissioner Cole. Motion passed (3) AYE (0) NAY

DISCUSSION ITEMS

A. Homeless follow-up/continuation

Art Black stated he has a meeting with Franklin County April 1st and is looking at grants through the Governor's office.

B. Landbank

Workshop dates: April 12th, 13th, 19th and 20th with a time set 6:00p-8:00 p.m.

INFORMATIONAL ITEMS

- A. The Prairie Spirit 100 Ultra Race, 100m/100k, 50m/50k run race, hosted by the Timer Guys will be held on March 25.
- B. The Egg Drop Easter Egg Hunt, hosted by the Garnett Church of the Nazarene, with the help of the Garnett Industrial Airport, will be held at the Garnett Industrial Airport on April 1st.
- C. Spring City Wide Garage Sale Day & Sidewalk Sales, hosted by Garnett Publishing, will be held on April 8.
- D. Garnett Farmers' Market Season, hosted by the Garnett Farmers Market, will be held on every Main Street every Thursday from May 4 – October 5.

CITIZENS TO BE HEARD (FIVE-MINUTE TIME LIMIT PER PERSON)

Billy Folk expressed his concern for those re-entering into society from prison, their needs and the lack of resources in Garnett.

Paula Scott expressed her concerns on rental houses in Garnett in poor condition.

ADJOURNMENT

With no further business before The Governing Body, Commissioner Locke made a motion to adjourn the meeting. Mayor Sheahan seconded the motion. Motion passed (3) AYE (0) NAY

Meeting adjourned at 8:40 p.m.

Mayor

City Clerk

GENERAL NOTES

THE STRUCTURE UNDER THIS CONTRACT HAS BEEN DESIGNED AND DETAILED FOR THE LOADS AND CONDITIONS STIPULATED IN THE CONTRACT AND SHOWN ON THESE DRAWINGS. ANY ALTERATION TO THE STRUCTURAL SYSTEM, REMOVAL OF ANY COMPONENT PARTS, OR THE ADDITION OF OTHER CONSTRUCTION MATERIALS OR LOADS MUST BE DONE UNDER THE ADVICE AND DIRECTION OF A REGISTERED ARCHITECT, CIVIL OR STRUCTURAL ENGINEER. THE BUILDING MANUFACTURER WILL ASSUME NO RESPONSIBILITY FOR ANY LOADS NOT INDICATED.

THIS METAL BUILDING IS DESIGNED WITH THE BUILDING MANUFACTURER'S STANDARD PRACTICES WHICH ARE BASED ON PERMITTED PROCEDURES AND RECOMMENDATIONS OF THE FOLLOWING ORGANIZATIONS AND CODES AS APPLICABLE: 1. AMERICAN INSTITUTE OF STEEL BUILDING DESIGNATION: AISC 308 2. AMERICAN IRON AND STEEL INSTITUTE, SPECIFICATION FOR THE DESIGN OF COLD FORMED STEEL STRUCTURAL MEMBERS. 3. AMERICAN WELDING SOCIETY, STRUCTURAL WELDING CODE AWS D1.1 4. METAL BUILDING MANUFACTURERS' COUNCIL, TECHNICAL BUILDING SYSTEMS MANUAL 5. INTERNATIONAL CODE COUNCIL: INTERNATIONAL BUILDING CODE

ALL WELDING ELECTRODES SHALL BE A233 CLASS E-70 SERIES. MINIMUM WELDS ON PRIMARY STRUCTURAL MEMBERS SHALL BE 3/16" FILLET WELDS UNLESS SHOWN OTHERWISE ON SHOP FABRICATION DRAWINGS.

ALL STRUCTURAL STEEL SHALL BE SHOP FABRICATED UNLESS NOTED. MATERIAL PROPERTIES OF STEEL PLATE AND SHEET USED IN THE FABRICATION OF PRIMARY RIGID FRAMES AND ALL PRIMARY STRUCTURAL FRAMING MEMBERS (OTHER THAN COLD-FORMED SECTIONS) CONFORM TO THE CHEMISTRY REQUIREMENTS OF ASTM-A36 WITH MINIMUM YIELD POINT OF 50,000 P.S.I. AS REQUIRED BY DESIGN.

MATERIAL PROPERTIES OF COLD FORMED LIGHT GAGE STEEL MEMBERS CONFORM TO THE REQUIREMENTS OF A.S.T.M. A-573, GRADE 55, WITH A MINIMUM YIELD POINT OF 57,000 P.S.I. ALL PIPE SHALL BE MINIMUM SCHEDULE 40 AND 36,000 P.S.I. UNLESS OTHERWISE NOTED.

CABLE BRACING TO BE "BRACE GRIP" SYSTEM AS MANUFACTURED BY FLORIDA WIRE AND CABLE COMPANY. EHS CABLE SHALL BE INSTALLED WITH "BRACE GRIP" SIDEWALL BAYS MAY REQUIRE THE FIELD CUTTING OF SLOTS SO THAT CABLE IS INSTALLED WITHIN THE "BRACE GRIP" SYSTEM.

STRUCTURAL JOINTS WITH A.S.T.M. A-325 HIGH STRENGTH BOLTS, WHERE INDICATED ON THE DRAWINGS, SHALL BE ASSEMBLED AND THE FASTENERS TIGHTENED IN ACCORDANCE WITH "SNUG-TIGHT" METHOD AS DESCRIBED IN THE SPECIFICATION FOR STRUCTURAL JOINTS USING ASTM F-3125 GRADE A325 OR GRADE A490 BOLTS (2020 EDITION), UNLESS OTHERWISE NOTED. ALL JOINTS WILL BE ASSEMBLED WITHOUT WASHERS UNLESS OTHERWISE NOTED.

ALL STEEL MEMBERS EXCEPT BOLTS AND FASTENERS SHALL RECEIVE ONE SHOP COAT OF IRON OXIDE CORROSION INHIBITIVE PRIMER.

SHOP AND FIELD INSPECTIONS AND ASSOCIATED FEES ARE THE RESPONSIBILITY OF THE CONTRACTOR. UNLESS OTHERWISE NOTED, ALL SCREWED-DOWN ROOF AND WALL PANELS ARE TO BE INSTALLED USING A MINIMUM OF ONE (1) FOOT EACH PURLIN GIRT AND ONE STITCH SCREW EVERY 20 INCHES ALONG THE PANEL LAPS AND ENDS AS DESCRIBED. THE NUMBER AND SIZE OF FIELD INSTALLED OPENINGS IN THESE WALLS MAY BE LIMITED, TO PROVIDE LATERAL SUPPORT. THE NUMBER AND SIZE OF FIELD INSTALLED OPENINGS IN THESE WALLS MAY BE LIMITED. SEE THE APPLICABLE WALL DRAWING OR CONTACT YOUR SALES REPRESENTATIVE FOR MORE INFORMATION.

THIS LETTER OF CERTIFICATION APPLIES SOLELY TO THIS BUILDING AND ITS COMPONENT PARTS AS FURNISHED AND/OR FABRICATED BY MUELLER, INC. AND SPECIFICALLY EXCLUDES FOUNDATION, MASONRY OR GENERAL CONSTRUCTION WORK NOTED ON THE DESIGN AND CERTIFICATION FOR THIS PROJECT. IT IS IN ACCORDANCE WITH THE PROVISIONS AND CONDITIONS OF THE CONTRACT DOCUMENTS. THE CUSTOMER IS TO INSURE ALL LOADS ARE IN COMPLIANCE WITH LOCAL REGULATORY AGENCIES AND ALL COMPONENTS AND PARTS MUST WITHSTAND THE WIND LOAD AND DESIGN SPECIFICATIONS MENTIONED ABOVE.

THIS LETTER OF CERTIFICATION APPLIES SOLELY TO THIS BUILDING AND ITS COMPONENT PARTS AS FURNISHED AND/OR FABRICATED BY MUELLER, INC. AND SPECIFICALLY EXCLUDES FOUNDATION, MASONRY OR GENERAL CONSTRUCTION WORK NOTED ON THE DESIGN AND CERTIFICATION FOR THIS PROJECT. IT IS IN ACCORDANCE WITH THE PROVISIONS AND CONDITIONS OF THE CONTRACT DOCUMENTS. THE CUSTOMER IS TO INSURE ALL LOADS ARE IN COMPLIANCE WITH LOCAL REGULATORY AGENCIES AND ALL COMPONENTS AND PARTS MUST WITHSTAND THE WIND LOAD AND DESIGN SPECIFICATIONS MENTIONED ABOVE.

THIS LETTER OF CERTIFICATION APPLIES SOLELY TO THIS BUILDING AND ITS COMPONENT PARTS AS FURNISHED AND/OR FABRICATED BY MUELLER, INC. AND SPECIFICALLY EXCLUDES FOUNDATION, MASONRY OR GENERAL CONSTRUCTION WORK NOTED ON THE DESIGN AND CERTIFICATION FOR THIS PROJECT. IT IS IN ACCORDANCE WITH THE PROVISIONS AND CONDITIONS OF THE CONTRACT DOCUMENTS. THE CUSTOMER IS TO INSURE ALL LOADS ARE IN COMPLIANCE WITH LOCAL REGULATORY AGENCIES AND ALL COMPONENTS AND PARTS MUST WITHSTAND THE WIND LOAD AND DESIGN SPECIFICATIONS MENTIONED ABOVE.

THIS LETTER OF CERTIFICATION APPLIES SOLELY TO THIS BUILDING AND ITS COMPONENT PARTS AS FURNISHED AND/OR FABRICATED BY MUELLER, INC. AND SPECIFICALLY EXCLUDES FOUNDATION, MASONRY OR GENERAL CONSTRUCTION WORK NOTED ON THE DESIGN AND CERTIFICATION FOR THIS PROJECT. IT IS IN ACCORDANCE WITH THE PROVISIONS AND CONDITIONS OF THE CONTRACT DOCUMENTS. THE CUSTOMER IS TO INSURE ALL LOADS ARE IN COMPLIANCE WITH LOCAL REGULATORY AGENCIES AND ALL COMPONENTS AND PARTS MUST WITHSTAND THE WIND LOAD AND DESIGN SPECIFICATIONS MENTIONED ABOVE.

THIS LETTER OF CERTIFICATION APPLIES SOLELY TO THIS BUILDING AND ITS COMPONENT PARTS AS FURNISHED AND/OR FABRICATED BY MUELLER, INC. AND SPECIFICALLY EXCLUDES FOUNDATION, MASONRY OR GENERAL CONSTRUCTION WORK NOTED ON THE DESIGN AND CERTIFICATION FOR THIS PROJECT. IT IS IN ACCORDANCE WITH THE PROVISIONS AND CONDITIONS OF THE CONTRACT DOCUMENTS. THE CUSTOMER IS TO INSURE ALL LOADS ARE IN COMPLIANCE WITH LOCAL REGULATORY AGENCIES AND ALL COMPONENTS AND PARTS MUST WITHSTAND THE WIND LOAD AND DESIGN SPECIFICATIONS MENTIONED ABOVE.

THIS LETTER OF CERTIFICATION APPLIES SOLELY TO THIS BUILDING AND ITS COMPONENT PARTS AS FURNISHED AND/OR FABRICATED BY MUELLER, INC. AND SPECIFICALLY EXCLUDES FOUNDATION, MASONRY OR GENERAL CONSTRUCTION WORK NOTED ON THE DESIGN AND CERTIFICATION FOR THIS PROJECT. IT IS IN ACCORDANCE WITH THE PROVISIONS AND CONDITIONS OF THE CONTRACT DOCUMENTS. THE CUSTOMER IS TO INSURE ALL LOADS ARE IN COMPLIANCE WITH LOCAL REGULATORY AGENCIES AND ALL COMPONENTS AND PARTS MUST WITHSTAND THE WIND LOAD AND DESIGN SPECIFICATIONS MENTIONED ABOVE.

THIS LETTER OF CERTIFICATION APPLIES SOLELY TO THIS BUILDING AND ITS COMPONENT PARTS AS FURNISHED AND/OR FABRICATED BY MUELLER, INC. AND SPECIFICALLY EXCLUDES FOUNDATION, MASONRY OR GENERAL CONSTRUCTION WORK NOTED ON THE DESIGN AND CERTIFICATION FOR THIS PROJECT. IT IS IN ACCORDANCE WITH THE PROVISIONS AND CONDITIONS OF THE CONTRACT DOCUMENTS. THE CUSTOMER IS TO INSURE ALL LOADS ARE IN COMPLIANCE WITH LOCAL REGULATORY AGENCIES AND ALL COMPONENTS AND PARTS MUST WITHSTAND THE WIND LOAD AND DESIGN SPECIFICATIONS MENTIONED ABOVE.

THIS LETTER OF CERTIFICATION APPLIES SOLELY TO THIS BUILDING AND ITS COMPONENT PARTS AS FURNISHED AND/OR FABRICATED BY MUELLER, INC. AND SPECIFICALLY EXCLUDES FOUNDATION, MASONRY OR GENERAL CONSTRUCTION WORK NOTED ON THE DESIGN AND CERTIFICATION FOR THIS PROJECT. IT IS IN ACCORDANCE WITH THE PROVISIONS AND CONDITIONS OF THE CONTRACT DOCUMENTS. THE CUSTOMER IS TO INSURE ALL LOADS ARE IN COMPLIANCE WITH LOCAL REGULATORY AGENCIES AND ALL COMPONENTS AND PARTS MUST WITHSTAND THE WIND LOAD AND DESIGN SPECIFICATIONS MENTIONED ABOVE.

THIS LETTER OF CERTIFICATION APPLIES SOLELY TO THIS BUILDING AND ITS COMPONENT PARTS AS FURNISHED AND/OR FABRICATED BY MUELLER, INC. AND SPECIFICALLY EXCLUDES FOUNDATION, MASONRY OR GENERAL CONSTRUCTION WORK NOTED ON THE DESIGN AND CERTIFICATION FOR THIS PROJECT. IT IS IN ACCORDANCE WITH THE PROVISIONS AND CONDITIONS OF THE CONTRACT DOCUMENTS. THE CUSTOMER IS TO INSURE ALL LOADS ARE IN COMPLIANCE WITH LOCAL REGULATORY AGENCIES AND ALL COMPONENTS AND PARTS MUST WITHSTAND THE WIND LOAD AND DESIGN SPECIFICATIONS MENTIONED ABOVE.

THIS LETTER OF CERTIFICATION APPLIES SOLELY TO THIS BUILDING AND ITS COMPONENT PARTS AS FURNISHED AND/OR FABRICATED BY MUELLER, INC. AND SPECIFICALLY EXCLUDES FOUNDATION, MASONRY OR GENERAL CONSTRUCTION WORK NOTED ON THE DESIGN AND CERTIFICATION FOR THIS PROJECT. IT IS IN ACCORDANCE WITH THE PROVISIONS AND CONDITIONS OF THE CONTRACT DOCUMENTS. THE CUSTOMER IS TO INSURE ALL LOADS ARE IN COMPLIANCE WITH LOCAL REGULATORY AGENCIES AND ALL COMPONENTS AND PARTS MUST WITHSTAND THE WIND LOAD AND DESIGN SPECIFICATIONS MENTIONED ABOVE.

THIS LETTER OF CERTIFICATION APPLIES SOLELY TO THIS BUILDING AND ITS COMPONENT PARTS AS FURNISHED AND/OR FABRICATED BY MUELLER, INC. AND SPECIFICALLY EXCLUDES FOUNDATION, MASONRY OR GENERAL CONSTRUCTION WORK NOTED ON THE DESIGN AND CERTIFICATION FOR THIS PROJECT. IT IS IN ACCORDANCE WITH THE PROVISIONS AND CONDITIONS OF THE CONTRACT DOCUMENTS. THE CUSTOMER IS TO INSURE ALL LOADS ARE IN COMPLIANCE WITH LOCAL REGULATORY AGENCIES AND ALL COMPONENTS AND PARTS MUST WITHSTAND THE WIND LOAD AND DESIGN SPECIFICATIONS MENTIONED ABOVE.

THIS LETTER OF CERTIFICATION APPLIES SOLELY TO THIS BUILDING AND ITS COMPONENT PARTS AS FURNISHED AND/OR FABRICATED BY MUELLER, INC. AND SPECIFICALLY EXCLUDES FOUNDATION, MASONRY OR GENERAL CONSTRUCTION WORK NOTED ON THE DESIGN AND CERTIFICATION FOR THIS PROJECT. IT IS IN ACCORDANCE WITH THE PROVISIONS AND CONDITIONS OF THE CONTRACT DOCUMENTS. THE CUSTOMER IS TO INSURE ALL LOADS ARE IN COMPLIANCE WITH LOCAL REGULATORY AGENCIES AND ALL COMPONENTS AND PARTS MUST WITHSTAND THE WIND LOAD AND DESIGN SPECIFICATIONS MENTIONED ABOVE.

THIS LETTER OF CERTIFICATION APPLIES SOLELY TO THIS BUILDING AND ITS COMPONENT PARTS AS FURNISHED AND/OR FABRICATED BY MUELLER, INC. AND SPECIFICALLY EXCLUDES FOUNDATION, MASONRY OR GENERAL CONSTRUCTION WORK NOTED ON THE DESIGN AND CERTIFICATION FOR THIS PROJECT. IT IS IN ACCORDANCE WITH THE PROVISIONS AND CONDITIONS OF THE CONTRACT DOCUMENTS. THE CUSTOMER IS TO INSURE ALL LOADS ARE IN COMPLIANCE WITH LOCAL REGULATORY AGENCIES AND ALL COMPONENTS AND PARTS MUST WITHSTAND THE WIND LOAD AND DESIGN SPECIFICATIONS MENTIONED ABOVE.

THIS LETTER OF CERTIFICATION APPLIES SOLELY TO THIS BUILDING AND ITS COMPONENT PARTS AS FURNISHED AND/OR FABRICATED BY MUELLER, INC. AND SPECIFICALLY EXCLUDES FOUNDATION, MASONRY OR GENERAL CONSTRUCTION WORK NOTED ON THE DESIGN AND CERTIFICATION FOR THIS PROJECT. IT IS IN ACCORDANCE WITH THE PROVISIONS AND CONDITIONS OF THE CONTRACT DOCUMENTS. THE CUSTOMER IS TO INSURE ALL LOADS ARE IN COMPLIANCE WITH LOCAL REGULATORY AGENCIES AND ALL COMPONENTS AND PARTS MUST WITHSTAND THE WIND LOAD AND DESIGN SPECIFICATIONS MENTIONED ABOVE.

THIS LETTER OF CERTIFICATION APPLIES SOLELY TO THIS BUILDING AND ITS COMPONENT PARTS AS FURNISHED AND/OR FABRICATED BY MUELLER, INC. AND SPECIFICALLY EXCLUDES FOUNDATION, MASONRY OR GENERAL CONSTRUCTION WORK NOTED ON THE DESIGN AND CERTIFICATION FOR THIS PROJECT. IT IS IN ACCORDANCE WITH THE PROVISIONS AND CONDITIONS OF THE CONTRACT DOCUMENTS. THE CUSTOMER IS TO INSURE ALL LOADS ARE IN COMPLIANCE WITH LOCAL REGULATORY AGENCIES AND ALL COMPONENTS AND PARTS MUST WITHSTAND THE WIND LOAD AND DESIGN SPECIFICATIONS MENTIONED ABOVE.

THIS LETTER OF CERTIFICATION APPLIES SOLELY TO THIS BUILDING AND ITS COMPONENT PARTS AS FURNISHED AND/OR FABRICATED BY MUELLER, INC. AND SPECIFICALLY EXCLUDES FOUNDATION, MASONRY OR GENERAL CONSTRUCTION WORK NOTED ON THE DESIGN AND CERTIFICATION FOR THIS PROJECT. IT IS IN ACCORDANCE WITH THE PROVISIONS AND CONDITIONS OF THE CONTRACT DOCUMENTS. THE CUSTOMER IS TO INSURE ALL LOADS ARE IN COMPLIANCE WITH LOCAL REGULATORY AGENCIES AND ALL COMPONENTS AND PARTS MUST WITHSTAND THE WIND LOAD AND DESIGN SPECIFICATIONS MENTIONED ABOVE.

THIS LETTER OF CERTIFICATION APPLIES SOLELY TO THIS BUILDING AND ITS COMPONENT PARTS AS FURNISHED AND/OR FABRICATED BY MUELLER, INC. AND SPECIFICALLY EXCLUDES FOUNDATION, MASONRY OR GENERAL CONSTRUCTION WORK NOTED ON THE DESIGN AND CERTIFICATION FOR THIS PROJECT. IT IS IN ACCORDANCE WITH THE PROVISIONS AND CONDITIONS OF THE CONTRACT DOCUMENTS. THE CUSTOMER IS TO INSURE ALL LOADS ARE IN COMPLIANCE WITH LOCAL REGULATORY AGENCIES AND ALL COMPONENTS AND PARTS MUST WITHSTAND THE WIND LOAD AND DESIGN SPECIFICATIONS MENTIONED ABOVE.

THIS LETTER OF CERTIFICATION APPLIES SOLELY TO THIS BUILDING AND ITS COMPONENT PARTS AS FURNISHED AND/OR FABRICATED BY MUELLER, INC. AND SPECIFICALLY EXCLUDES FOUNDATION, MASONRY OR GENERAL CONSTRUCTION WORK NOTED ON THE DESIGN AND CERTIFICATION FOR THIS PROJECT. IT IS IN ACCORDANCE WITH THE PROVISIONS AND CONDITIONS OF THE CONTRACT DOCUMENTS. THE CUSTOMER IS TO INSURE ALL LOADS ARE IN COMPLIANCE WITH LOCAL REGULATORY AGENCIES AND ALL COMPONENTS AND PARTS MUST WITHSTAND THE WIND LOAD AND DESIGN SPECIFICATIONS MENTIONED ABOVE.

THIS LETTER OF CERTIFICATION APPLIES SOLELY TO THIS BUILDING AND ITS COMPONENT PARTS AS FURNISHED AND/OR FABRICATED BY MUELLER, INC. AND SPECIFICALLY EXCLUDES FOUNDATION, MASONRY OR GENERAL CONSTRUCTION WORK NOTED ON THE DESIGN AND CERTIFICATION FOR THIS PROJECT. IT IS IN ACCORDANCE WITH THE PROVISIONS AND CONDITIONS OF THE CONTRACT DOCUMENTS. THE CUSTOMER IS TO INSURE ALL LOADS ARE IN COMPLIANCE WITH LOCAL REGULATORY AGENCIES AND ALL COMPONENTS AND PARTS MUST WITHSTAND THE WIND LOAD AND DESIGN SPECIFICATIONS MENTIONED ABOVE.

THIS LETTER OF CERTIFICATION APPLIES SOLELY TO THIS BUILDING AND ITS COMPONENT PARTS AS FURNISHED AND/OR FABRICATED BY MUELLER, INC. AND SPECIFICALLY EXCLUDES FOUNDATION, MASONRY OR GENERAL CONSTRUCTION WORK NOTED ON THE DESIGN AND CERTIFICATION FOR THIS PROJECT. IT IS IN ACCORDANCE WITH THE PROVISIONS AND CONDITIONS OF THE CONTRACT DOCUMENTS. THE CUSTOMER IS TO INSURE ALL LOADS ARE IN COMPLIANCE WITH LOCAL REGULATORY AGENCIES AND ALL COMPONENTS AND PARTS MUST WITHSTAND THE WIND LOAD AND DESIGN SPECIFICATIONS MENTIONED ABOVE.

PRODUCT CERTIFICATIONS

THIS IS TO CERTIFY THE ABOVE REFERENCED BUILDING HAS BEEN DESIGNED IN ACCORDANCE WITH A.I.S.C. AND A.I.S.I. DESIGN PROCEDURES AND GOOD ENGINEERING PRACTICE AND FOR THE FOLLOWING LOADS. ALL WELDING IS PER THE A.S.T.M. D1.1 & D1.3 CODES. LOADS ARE APPLIED IN ACCORDANCE WITH THE M.B.M.A. LOW RISE BUILDING SYSTEMS MANUAL. AND THE DESIGN SATISFIES THE REQUIREMENTS OF IBC'18

DEAD LOAD: METAL BLDG STRUCTURE ONLY AS FURNISHED BY MUELLER, INC.

LIVE LOAD (ROOF): 20.0 (psf) GROUND SNOW LOAD: P_g = 20.0 (psf)

LIVE LOAD REDUCED PER CODE? YES ROOF SNOW LOAD (Flat): P_r = 20.0 (psf)

WIND EXPOSURE: C WIND LOAD: V_{ult} = 110.0 MPH

RISK CATEGORY: II - Normal WIND LOAD: V_{ult} = 110.0 MPH

SEISMIC LOADS: V_{ult} = 85.2 MPH

SEISMIC DESIGN CATEGORY: B

SITE CLASS: D

ANALYSIS PROCEDURE: Equivalent Lateral Force Method

SEISMIC DESIGN CATEGORY: B

ANALYSIS PROCEDURE: Equivalent Lateral Force Method

ANALYSIS PROCEDURE: Equivalent Lateral Force Method

ANALYSIS PROCEDURE: Equivalent Lateral Force Method

ANALYSIS PROCEDURE: Equivalent Lateral Force Method

ANALYSIS PROCEDURE: Equivalent Lateral Force Method

ANALYSIS PROCEDURE: Equivalent Lateral Force Method

ANALYSIS PROCEDURE: Equivalent Lateral Force Method

ANALYSIS PROCEDURE: Equivalent Lateral Force Method

ANALYSIS PROCEDURE: Equivalent Lateral Force Method

ANALYSIS PROCEDURE: Equivalent Lateral Force Method

ANALYSIS PROCEDURE: Equivalent Lateral Force Method

ANALYSIS PROCEDURE: Equivalent Lateral Force Method

ANALYSIS PROCEDURE: Equivalent Lateral Force Method

ANALYSIS PROCEDURE: Equivalent Lateral Force Method

ANALYSIS PROCEDURE: Equivalent Lateral Force Method

ANALYSIS PROCEDURE: Equivalent Lateral Force Method

ANALYSIS PROCEDURE: Equivalent Lateral Force Method

ANALYSIS PROCEDURE: Equivalent Lateral Force Method

ANALYSIS PROCEDURE: Equivalent Lateral Force Method

ANALYSIS PROCEDURE: Equivalent Lateral Force Method

ANALYSIS PROCEDURE: Equivalent Lateral Force Method

ANALYSIS PROCEDURE: Equivalent Lateral Force Method

ANALYSIS PROCEDURE: Equivalent Lateral Force Method

ANALYSIS PROCEDURE: Equivalent Lateral Force Method

ANALYSIS PROCEDURE: Equivalent Lateral Force Method

ANALYSIS PROCEDURE: Equivalent Lateral Force Method

ANALYSIS PROCEDURE: Equivalent Lateral Force Method

ANALYSIS PROCEDURE: Equivalent Lateral Force Method

ANALYSIS PROCEDURE: Equivalent Lateral Force Method

ANALYSIS PROCEDURE: Equivalent Lateral Force Method

ANALYSIS PROCEDURE: Equivalent Lateral Force Method

ANALYSIS PROCEDURE: Equivalent Lateral Force Method

ANALYSIS PROCEDURE: Equivalent Lateral Force Method

ANALYSIS PROCEDURE: Equivalent Lateral Force Method

ANALYSIS PROCEDURE: Equivalent Lateral Force Method

ANALYSIS PROCEDURE: Equivalent Lateral Force Method

ANALYSIS PROCEDURE: Equivalent Lateral Force Method

ANALYSIS PROCEDURE: Equivalent Lateral Force Method

ANALYSIS PROCEDURE: Equivalent Lateral Force Method

ANALYSIS PROCEDURE: Equivalent Lateral Force Method

ANALYSIS PROCEDURE: Equivalent Lateral Force Method

ANALYSIS PROCEDURE: Equivalent Lateral Force Method

ANALYSIS PROCEDURE: Equivalent Lateral Force Method

ANALYSIS PROCEDURE: Equivalent Lateral Force Method

ANALYSIS PROCEDURE: Equivalent Lateral Force Method

ANALYSIS PROCEDURE: Equivalent Lateral Force Method

ANALYSIS PROCEDURE: Equivalent Lateral Force Method

ANALYSIS PROCEDURE: Equivalent Lateral Force Method

DEFLECTION LIMIT TABLE

EW Column	L/ 110
EW Rafter (Live)	L/ 180
EW Rafter (Wind)	L/ 180
Wall Girt	L/ 90
Roof Purlin (Live)	L/ 150
Roof Purlin (Wind)	L/ 150
Rigid Frame (Horiz)	H/ 60
Rigid Frame (Vert)	L/ 180
Wind Framing	H/ 60

PAGE	DESCRIPTION
C1	COVER SHEET
A1	ANCHOR BOLT PLAN
A2	ANCHOR BOLT DETAILS
A3	ANCHOR BOLT DETAILS
A4	REACTIONS
E1	ROOF PLAN
E2	WALL ELEVATION AT GRID E
E3	WALL ELEVATION AT GRID A
E4	WALL ELEVATION AT GRID 1
E5	WALL ELEVATION AT GRID 4
E6	FRAME ELEVATION ON GRID 1
E7	FRAME ELEVATION ON GRID 2
E8	FRAME ELEVATION ON GRID 3
E101	ERECTOR DETAILS
E102	ERECTOR DETAILS
E103	ERECTOR DETAILS
E104	ERECTOR DETAILS
S101	SHEETING DETAILS
T101	TRIM DETAILS
T102	TRIM DETAILS

FOR CONSTRUCTION



TLC

For help with installation of your building, please visit our website:

www.muellerinc.com/downloads/download-manuals

NOTE: THE ENGINEER LISTED ON THESE DRAWINGS IS NOT THE REGISTERED DESIGN PROFESSIONAL IN RESPONSIBLE CHARGE. NON-ENGINEER OF RECORD FOR THE OVERALL PROJECT.

Legend

PART MARK = Part001



MUELLER, INC.
STEEL BUILDING SYSTEMS & COMPONENTS
1913 Hutchins Ave. Ballinger, TX 76821
(800) 527-1087

REV	DATE	DESCRIPTION
0	01/17/2023	For Construction

DESIGNED BY	Harold Gilbreth
CHECKED BY	Harold Gilbreth
DATE	01/17/2023
PROJECT NO.	6539134
REV	0

Legend

PART MARK = Part001

Legend

PART MARK = Part001

Legend

PART MARK = Part001

Legend

PART MARK = Part001

Legend

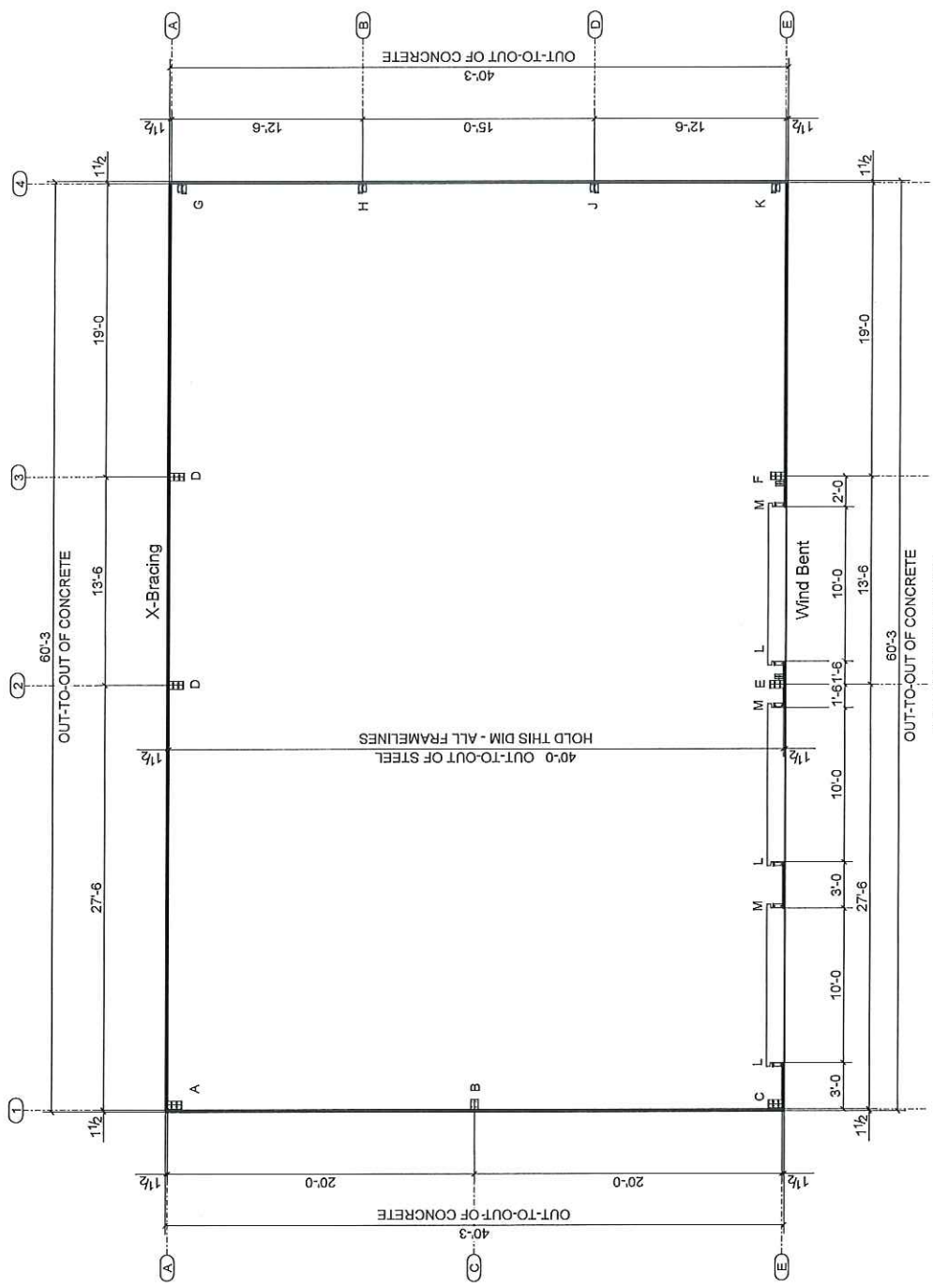
PART MARK = Part001

Legend

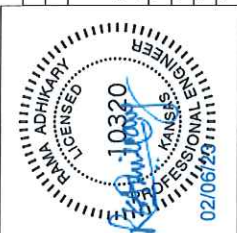
PART MARK = Part001

Legend

PART MARK = Part001



ANCHOR BOLT PLAN
NOTE: Base Plates @ 100'-0"(U.N.)

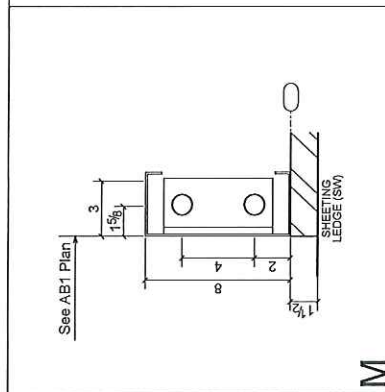
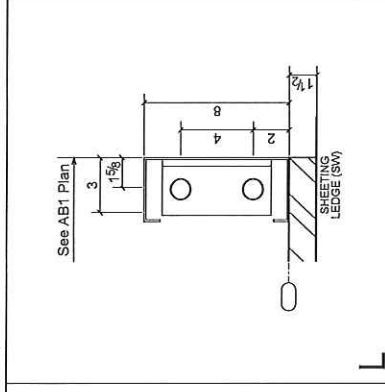
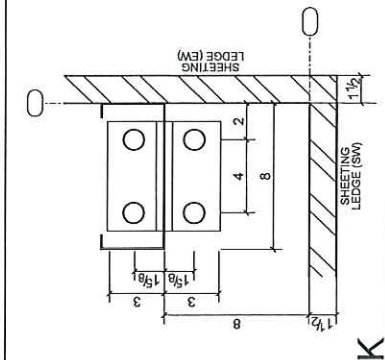


REV	DATE	DESCRIPTION
0	01/17/2023	For Construction

COMPANY	MUELLER, INC.
DESCRIPTION	STEEL BUILDING SYSTEMS & COMPONENTS
ADDRESS	1913 Hutchins Ave., Ballinger, TX 76821
PHONE	(800) 527-1087
DRAWING DESCRIPTION	ANCHOR BOLT PLAN
DESIGNED BY	Harold Gilbreth
CHECKED BY	Harold Gilbreth
DATE	01/17/2023
SCALE	1:50
PROJECT	6539134
JOB SITE ADDRESS	025892 SE 500 ROAD Kincaid, KS 66539
DATE	01/17/2023
CONTRACTOR	LPH
DATE	01/17/2023
PROJECT	6539134
REVISION	0

ANCHOR BOLT SUMMARY		
QTY	LOCATION	DIA
12	JAMB	5/8"
16	ENDWALL	5/8"
4	WIND COLUMN	3/4"
4	ENDWALL	5/8"
24	MAINFRAME	3/4"

For Visual Purposes, Base Plate Views may be Exaggerated Beyond Dwg Scale



K

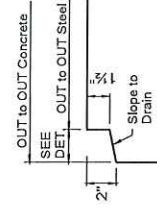
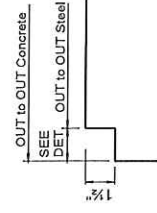
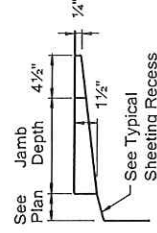
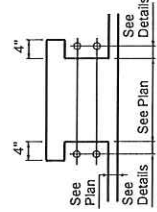
L

M

See AB1 Plan

See AB1 Plan

See AB1 Plan



TYP. OVERHEAD DOOR BOLT LAYOUT

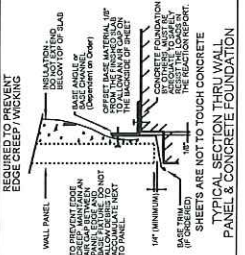
TYP. OVERHEAD DOOR RECESS

TYP. SHEETING RECESS WITH BASE DRIP EDGE TRIM

TYP. SHEETING RECESS W/O BASE DRIP EDGE TRIM

GENERAL NOTES

1. Foundation details are not the responsibility of MUELLER, INC.
2. The building location data reports the loads, which the building places on the foundation.
3. The building location data reports the loads, which the building places on the foundation, with a tolerance of ± 1.0% in both elevation and location.
4. Anchor bolts are designed to be installed in concrete at a depth of 12" per separate inch.
5. Anchor Bolt seats are based on the concrete strength of the concrete. An increase in the strength of the concrete will allow for a larger diameter of the anchor bolts and adequately anchor the door. An increase in the strength of the concrete will allow for a larger diameter of the anchor bolts and adequately anchor the door. An increase in the strength of the concrete will allow for a larger diameter of the anchor bolts and adequately anchor the door.



If you ordered Anchor Bolt Templates on your building, please visit our website:



www.muellerinc.com/downloads/videos/anchor-bolt-templates-videos



REV	DATE	DESCRIPTION
0	01/17/2023	For Construction

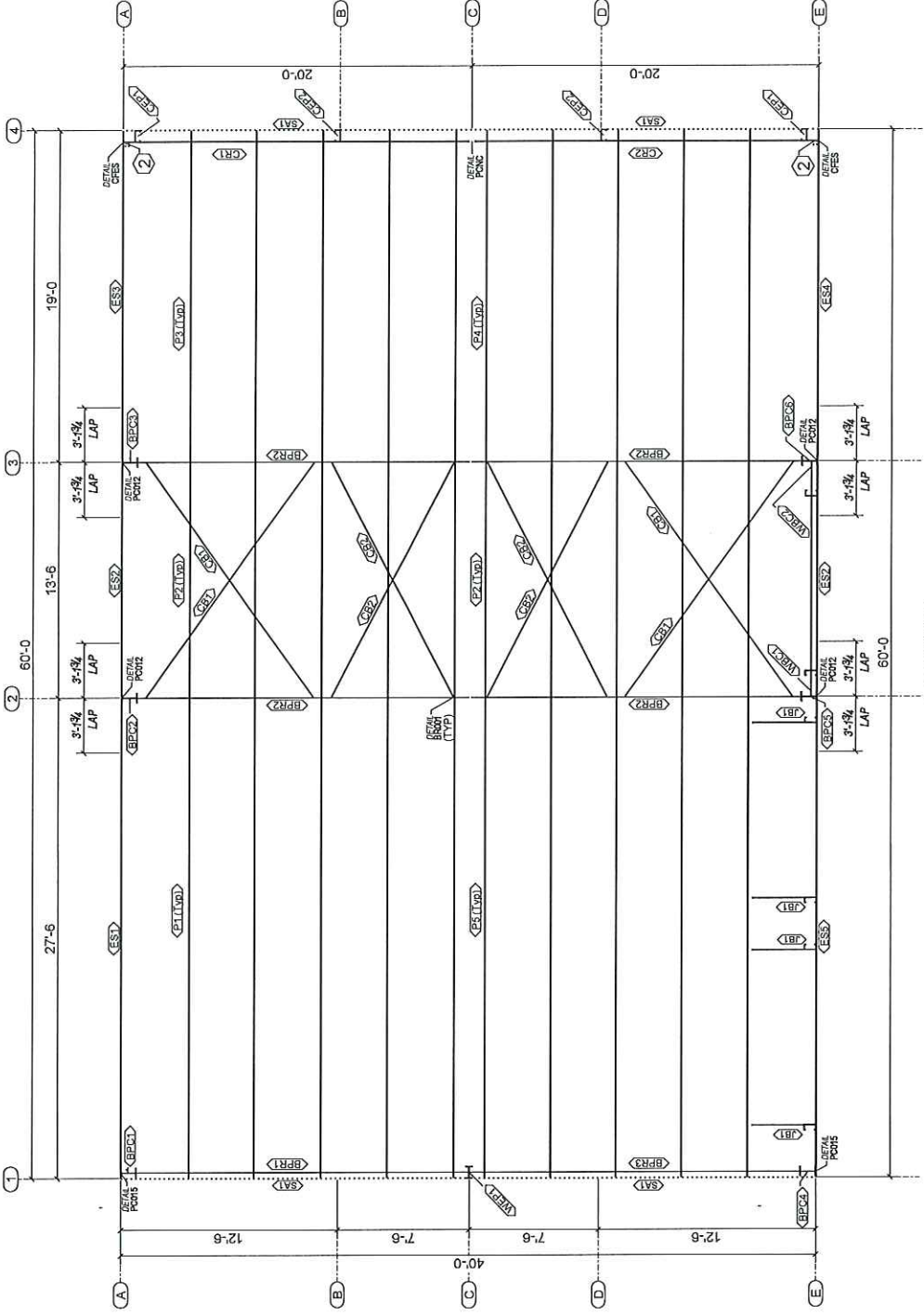
MUELLER, INC.
STEEL BUILDING SYSTEMS & COMPONENTS
1913 Hutchins Ave. Ballinger, TX 76821
(800) 527-1087

ANCHOR BOLT DETAILS

DRAWING DESCRIPTION: ANCHOR BOLT DETAILS
 TITLE: ANCHOR BOLT DETAILS
 DESIGNED BY: Harold Gilbreth
 CHECKED BY: Mike Booth
 DATE: 01/17/2023
 SCALE: NONE
 JOB NO: 22592 SE 500 ROAD
 PROJECT: Kincald, KS 66939
 SHEET: AB3
 TOTAL SHEETS: 0

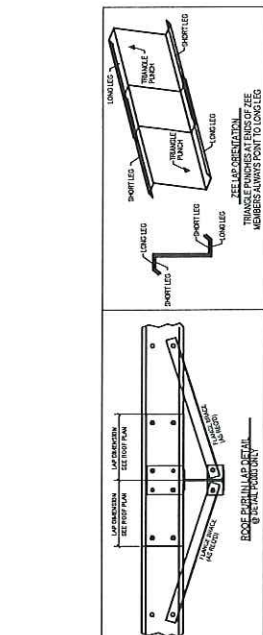
Special Bolts - Roof Plan

O.I.D.	Qty	Type	Dia	Length
2	4	A307	1/2"	1"



ROOF PLAN

Qty	Mark	Profile	Finish	Length
4	CR1	CB14D	GZ	14'-10 9/16"
4	CR2	CB14D	GZ	15'-5"
1	ES1	82E14DU-2	RO	27'-5 1/2"
2	ES2	82E14DU-2	RO	12'-5 1/2"
1	ES3	82E14DU-2	RO	18'-11 1/2"
1	ES4	82E14DU-2	RO	18'-11 1/2"
1	ES5	82E14DU-2	RO	27'-5 1/2"
4	P1	2X2L12	RO	3'-8 7/8"
5	P2	8X25Z12	RO	30'-7 1/2"
10	P3	8X25Z12	RO	18'-9 1/2"
5	P4	8X25Z14	RO	22'-1 1/2"
5	P5	8X25Z12	RO	30'-7 1/2"
4	SA1	L4X2x14GA	RO	20'-2 13/16"

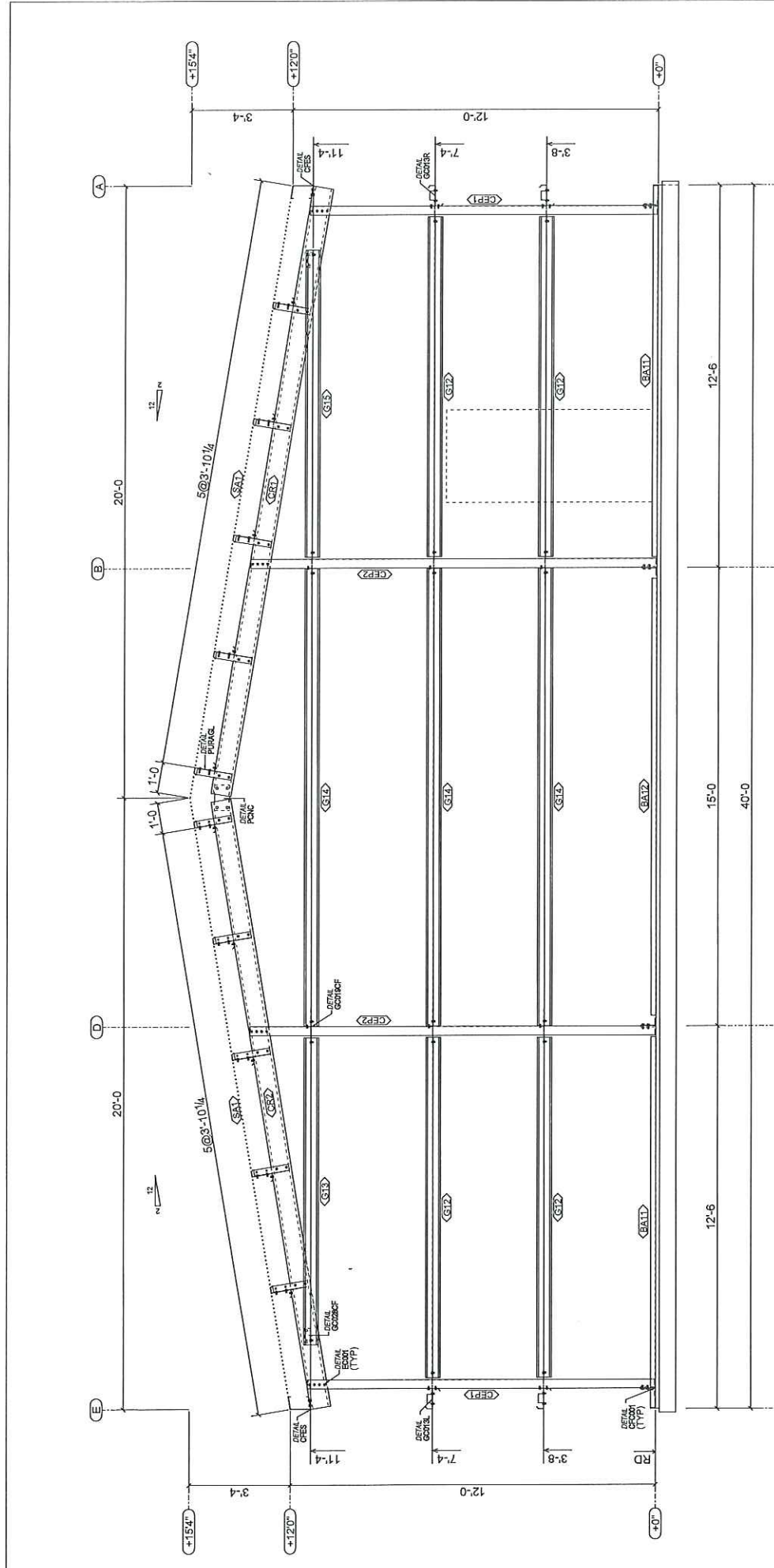


For Construction

REV	DATE	DESCRIPTION
0	01/17/2023	

MUELLER, INC.
 STEEL BUILDING SYSTEMS & COMPONENTS
 1913 Hutchins Ave. Ballinger, TX 76821
 (800) 527-1087

ENGINEER: RMA ADHIKARI
 JOB SITE ADDRESS: 32452 SE 500 ROAD, KENALD, KS 66639
 SALESMAN: HAROLD GIBBETH
 DRAWING DESCRIPTION: ROOF PLAN
 END USER: HAROLD GIBBETH
 DATE: 01/17/2023
 LPH: TLC
 SHEET: 6539134 E1 OF 0

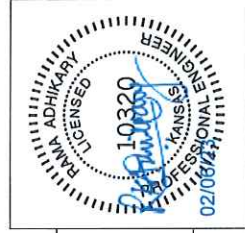


WALL ELEVATION AT GRID 4

REV	DATE	DESCRIPTION
0	01/17/2023	For Construction

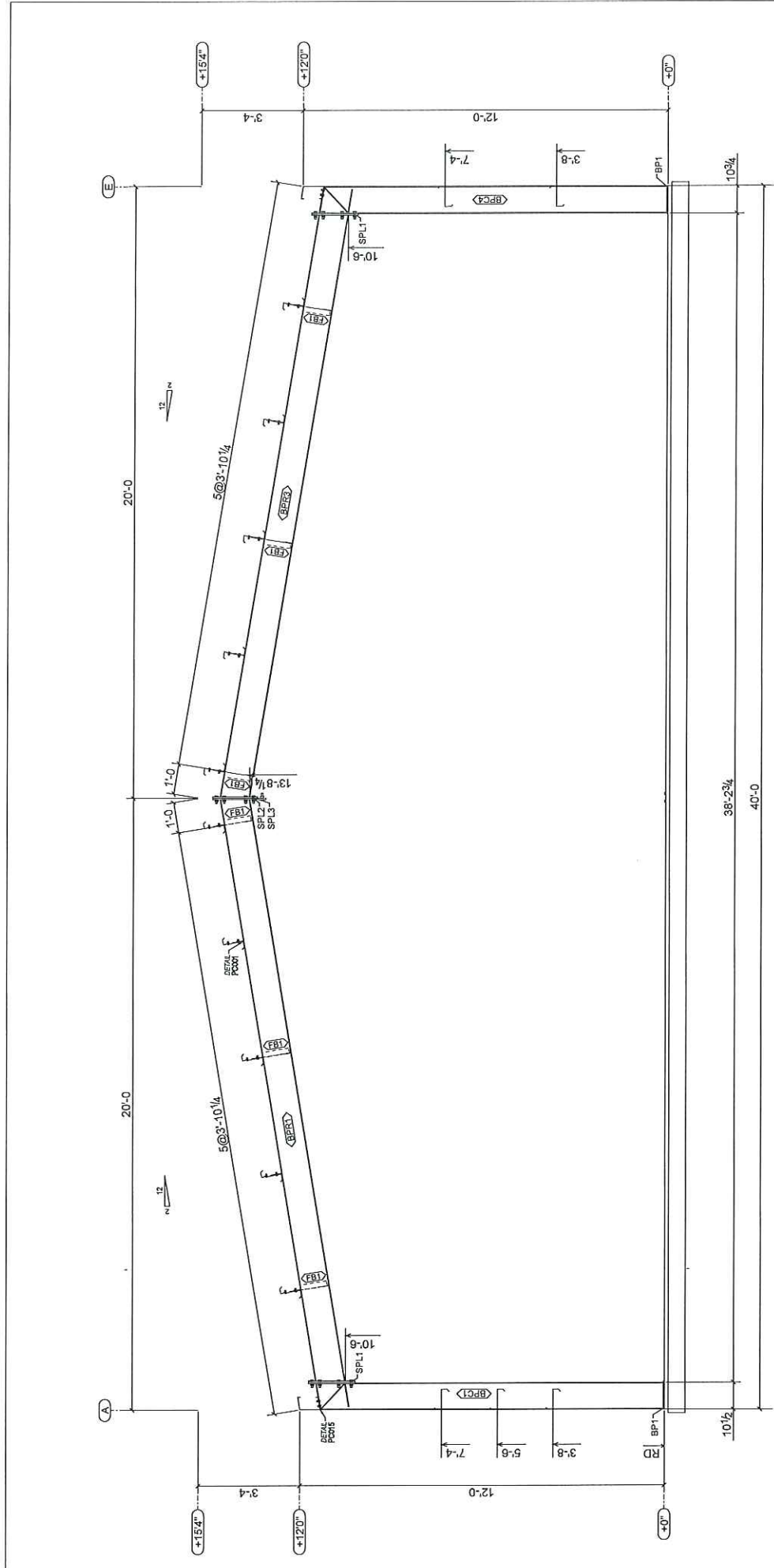
MUELLER, INC.
 STEEL BUILDING SYSTEMS & COMPONENTS
 1913 Hutchins Ave. Ballinger, TX 76821
 (800) 527-1087

DRAWING DESCRIPTION: WALL ELEVATION AT GRID 4
 DESIGNED BY: Harold Gilbreth
 CHECKED BY: Harold Gilbreth
 DATE: 01/17/2023
 SCALE: 1/8" = 1'-0"



For help with Coldform Endwall installation of your building, please visit our website:
www.muellerinc.com/downloads/download-manuals
 ALL ENDWALL COLUMNS AND JAMBS ARE DESIGNED AS "POSTS" AS DEFINED BY OSHA AND ARE NOT INTENDED TO BE CLIMBED ON UNTIL FULLY BRACED.

Bill of Materials		Component Bolt Table							
Qty	Mark	Profile	Finish	Length	Detail ID	Component	Assemblies	Qty	Bolt Description
2	BA11	L4X2X1/4GA	RO	12'-1 1/2"	CF001	CF001	MC5	↓	12 - 1/2" x 1 1/2" A325N
1	BA12	L4X2X1/4GA	RO	14'-3 1/2"	CEP1	CEP1	MC5	↓	12 - 1/2" x 1 1/2" A325N
2	CEP1	8X35C14	RO	11'-5 1/4"	CEP2	CEP2	MC5	↓	12 - 1/2" x 1 1/2" A325N
2	CEP2	8X35C14	RO	13'-4 5/16"	EC001	EC001	MC5	↓	12 - 1/2" x 1 1/2" A325N
1	CR1	8X35C12	RO	20'-4 9/16"	CEP1	CEP1	CR1	↓	4 - 1/2" x 1 1/2" A325N
1	CR2	8X35C12	RO	20'-4 9/16"	CEP2	CEP2	CR1	↓	4 - 1/2" x 1 1/2" A325N
4	G12	8X25Z16	RO	11'-1 3/8"	CEP1	CEP1	CR2	↓	4 - 1/2" x 1 1/2" A325N
1	G13	8X25Z16	RO	10'-0 7/16"	CEP2	CEP2	CR2	↓	4 - 1/2" x 1 1/2" A325N
3	G14	8X25Z16	RO	14'-11 1/2"	CEP1	CEP1	CR2	↓	4 - 1/2" x 1 1/2" A325N
1	G15	8X25Z16	RO	10'-0 7/16"	CEP2	CEP2	CR2	↓	4 - 1/2" x 1 1/2" A325N



FRAME ELEVATION ON GRID 1

THIS ENDWALL FRAME IS NOT EXPANDABLE

Mark	Type	Thick x Max Width x Length
BPC1	IF	SHT10GAX10" x 13 1/2"
BPC2	IF	PL1/4X6" x 121 5/8"
BPC3	OF	PL1/4X6" x 135 3/16"
BPC4	IF	SHT10GAX10" x 13 3/4"
BPR1	OF	PL3/8X6" x 121 5/8"
BPR2	OF	PL3/8X6" x 135 3/16"
BPR3	IF	SHT10GAX11" x 59"
FB1	IF	PL1/4X6" x 231 3/8"
FB2	OF	PL1/4X6" x 231 3/8"
FB3	IF	SHT10GAX11" x 59 15/16"
FB4	IF	PL1/4X6" x 231 1/4"
FB5	OF	PL1/4X6" x 231 1/4"

Bill of Materials			
Qty	Mark	Profile	Finish
1	BPC1	SHT10GAX10"	RO
1	BPC2	SHT10GAX10"	RO
1	BPC3	SHT10GAX10"	RO
1	BPC4	SHT10GAX11"	RO
1	BPR1	SHT10GAX11"	RO
1	BPR2	SHT10GAX11"	RO
1	BPR3	SHT10GAX11"	RO
6	FB1	2X2L12	RO

Connection Plate and Bolt Table			
Mark	Plate Profile	Bolt Description	Component Bolt Table
BPC1	PL1/2X6" x 11"	REF. AS PLAN	Connected Comp.
SPL1	PL1/2X6" x 18 1/2"	8 - 3/4" x 2 1/2" A325N	Assemblies
SPL2	PL1/2X6" x 21"	2 - 3/4" x 2 1/2" A325N	Clip
SPL3	PL1/2X6" x 17 1/2"	8 - 3/4" x 2 1/2" A325N	WEPT -> BPR1

Detail ID	Detail Description
RC013	2 - 3/4" x 2 1/2" A325N



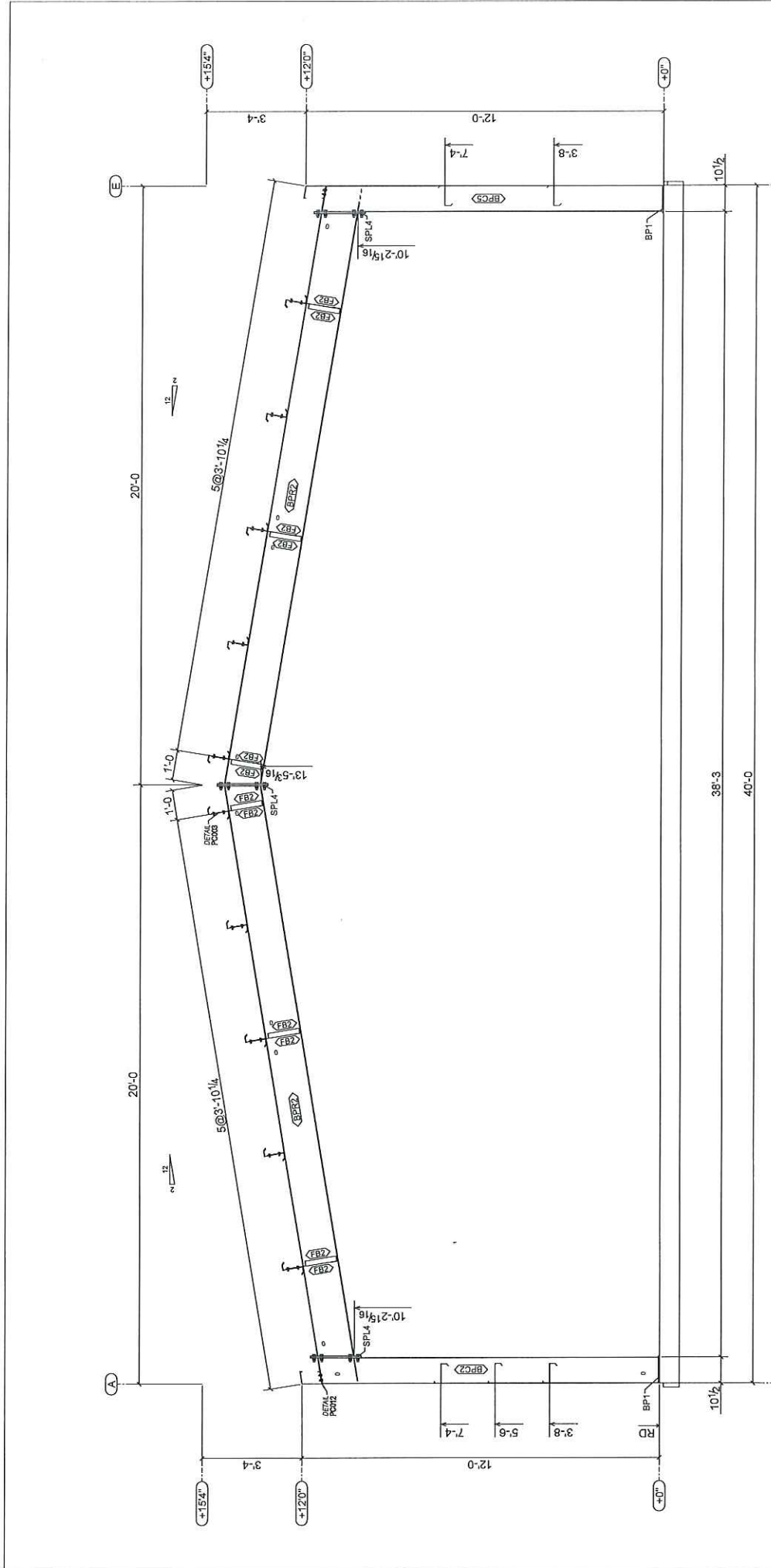
REV	DATE	DESCRIPTION
0	01/17/2023	For Construction

MUELLER, INC.
 STEEL BUILDING SYSTEMS & COMPONENTS
 1913 Hutchins Ave. Ballinger, TX 76821
 (800) 527-1087

DRAWING DESCRIPTION: FRAME ELEVATION ON GRID 1

ENGINEER: Harold Gilbreth
 SALESMAN: Mike Booth
 CHECKER: LPH
 DATE: 01/17/2023
 SCALE: E6
 SHEET: 0

PROJECT ADDRESS: 3252 SE 500 ROAD, Kinnel, KS 66539

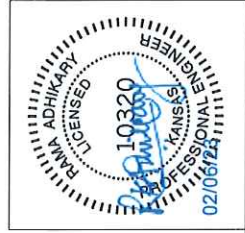


FRAME ELEVATION ON GRID 2

REV	DATE	DESCRIPTION
0	01/17/2023	For Construction

MUELLER, INC.
 STEEL BUILDING SYSTEMS & COMPONENTS
 1913 Hutchins Ave. Ballinger, TX 76821
 (800) 527-1087

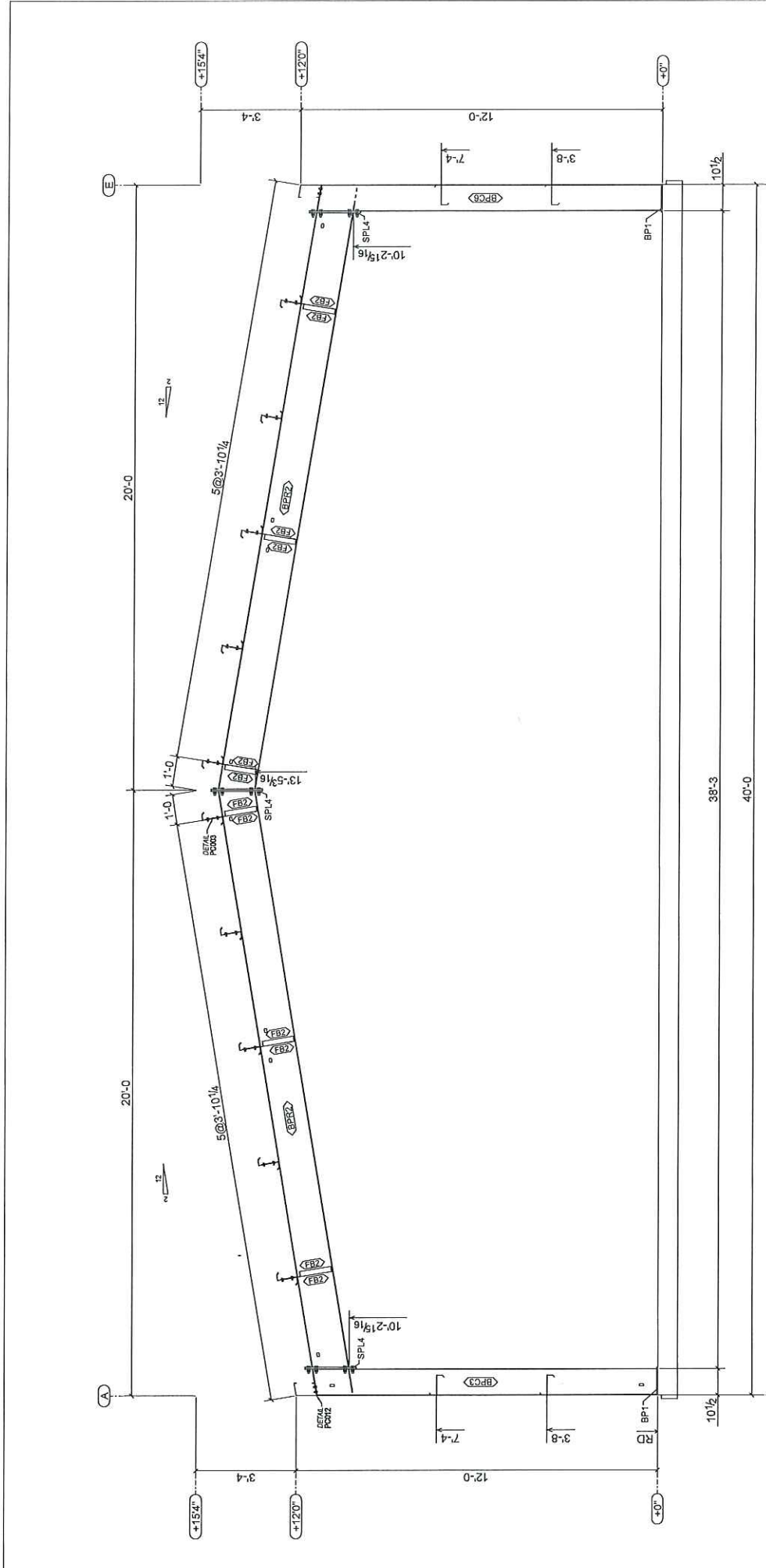
DRAWING DESCRIPTION: FRAME ELEVATION ON GRID 2
 SALESMAN: Harold Gilbreth
 CHECKER: Mike Booth
 DATE: 01/17/2023
 SHEET: 117
 PROJECT: 2392 SE 500 ROAD - Kismet, KS 66539
 DRAWING NO: 6539134



Mark	Type	Thick x Max Width x Length
BPC2	IF	PL1/4"x10" x 119.916"
	OF	PL1/4"x8" x 135.316"
BPC5	IF	PL1/4"x10" x 119.916"
	OF	PL1/4"x8" x 135.316"
BPR2	IF	SHT10GAx1/4" x 51"
	OF	PL1/4"x8" x 231.36"

Qty	Mark	Profile	Finish	Length
1	BPC2	PL1/4"x10"	RO	
1	BPC5	PL1/4"x10"	RO	
2	BPR2	SHT10GAx1/4"	RO	
12	IF	2x2L121	RO	2-8.50"

Mark	Plate Profile	Bolt Description
BP1	PL1/2"x6" x 11"	REF. AS PLAN
SPL4	PL1/2"x6" x 20 1/2"	B - 3/4" x 2 1/2" A325N



FRAME ELEVATION ON GRID 3

REV	DATE	DESCRIPTION
0	01/17/2023	For Construction

MUELLER, INC.
 STEEL BUILDING SYSTEMS & COMPONENTS
 1913 Hutchins Ave. Ballinger, TX 76821
 (800) 527-1087

DRAWING DESCRIPTION
 FRAME ELEVATION ON GRID 3

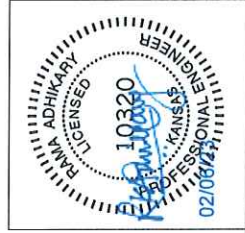
SALESMAN
 Harold Gilbreth

DESIGNER
 Harold Gilbreth

CHECKER
 Mike Booth

DATE
 01/17/2023

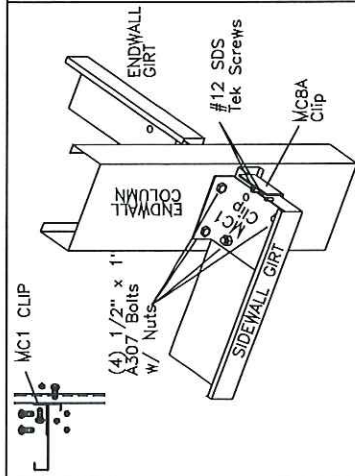
PROJECT
 6539134



Mark	Type	Thick x Max Width x Length
BPC3	IF	PL1/4"x10" x 11"
BPC5	OF	PL1/4"x6" x 135.5x16" x 11"
BPR2	IF	PL1/4"x6" x 119.9x16" x 8"
	OF	PL1/4"x6" x 135.5x16" x 8"
	IF	SHT10GAX1/4" x 231.36" x 231.36"
	OF	PL1/4"x6" x 231.36" x 231.36"

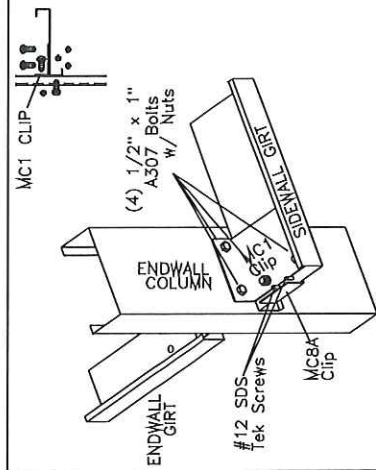
Qty	Mark	Profile	Finish	Length
1	BPC3	PL1/4"x10"	RO	
1	BPC5	PL1/4"x10"	RO	
2	BPR2	SHT10GAX1/4"	RO	
12	IF	2X2L12	RO	2-8.9x16"

Mark	Plate Profile	Connection Plate and Bolt Table	Bolt Description
BP1	PL1/2"x6" x 11"		REF. AS PLAN
SPL4	PL1/2"x6" x 20 1/2"		B - 3/4" x 2 1/2" A325N



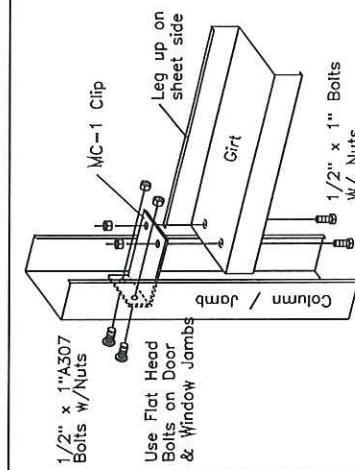
GC013L

CORNER COLUMN TO WALL GIRTS



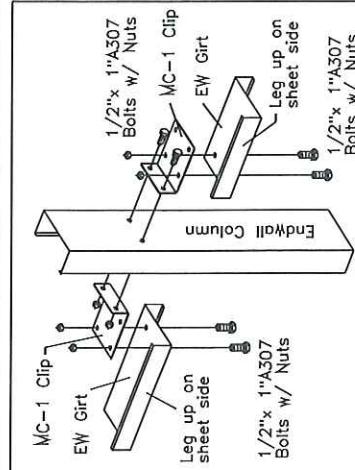
GC013R

CORNER COLUMN TO WALL GIRTS



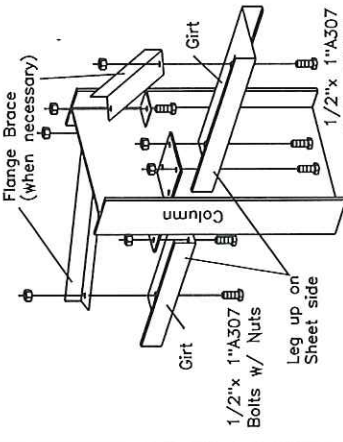
GC018CF

JAMB / COLUMN TO WALL GIRTS



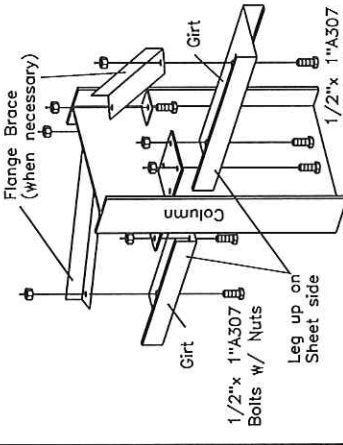
GC019CF

INTERIOR ENDWALL COLUMN TO WALL GIRTS



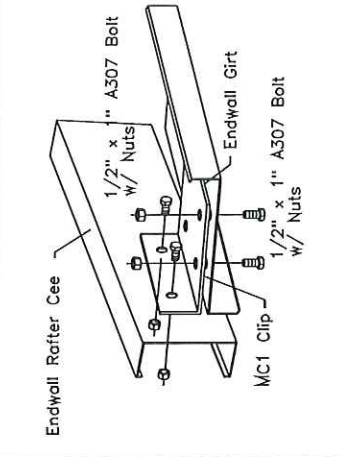
GC020

INTERIOR COLUMN TO WALL GIRTS



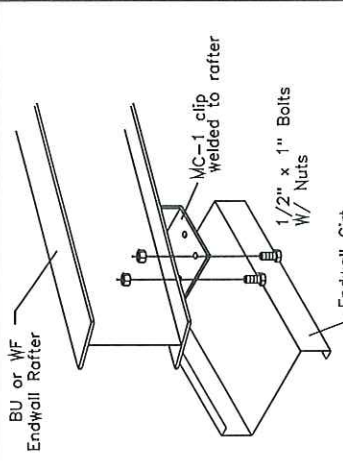
GC021

INTERIOR COLUMN TO WALL GIRTS



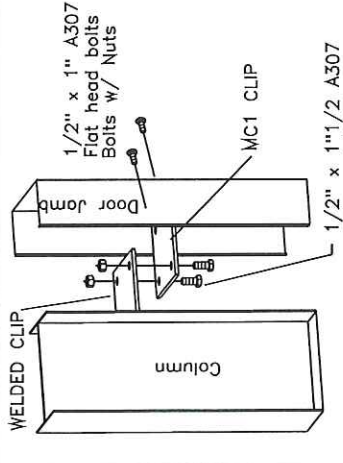
GC028CF

ENDWALL, GABLE GIRTS TO RAFTER



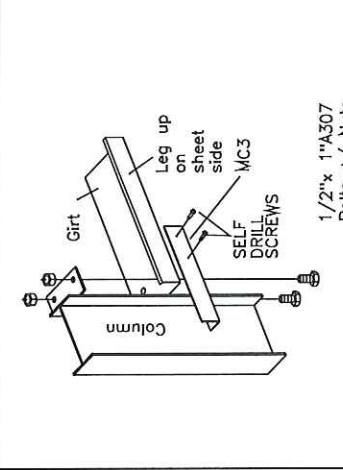
GC029

ENDWALL GIRTS TO RAFTER



GC032

CLIP TO CLIP CONNECTION



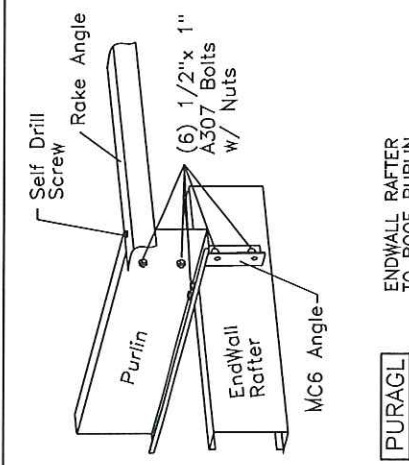
GC63

COLUMN TO WALL GIRTS

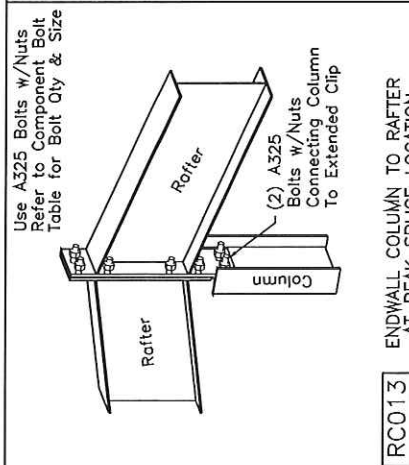
ALL A325 STRUCTURAL BOLT CONNECTIONS SHOWN IN THESE DETAILS HAVE STANDARD MINIMUM BOLT INFORMATION. FOR SPECIFIC BOLT QUANTITIES AND SIZES, REFER TO COMPONENT BOLT TABLES LOCATED ON FRAME AND WALL ELEVATION DWGS.



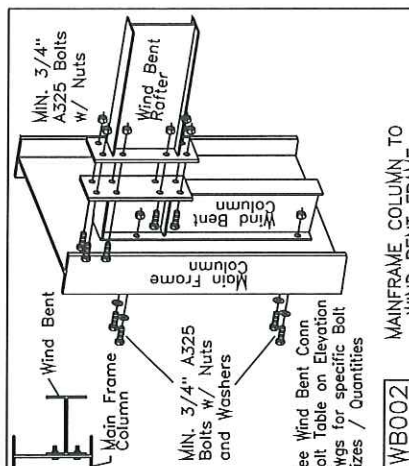
0	01/17/2023	For Construction	DESCRIPTION
REV	DATE		
MUELLER, INC. STEEL BUILDING SYSTEMS & COMPONENTS 1913 Hutchins Ave., Ballinger, TX 76821 (800) 527-1087			
DRAWING DESCRIPTION: Erection Details			
SALESMAN: Harold Gilbreth			
JOB TITLE: Booth Checker			
JOB ADDRESS: 2529 SE 50th Road, Kismet, KS 66509			
JOB PHONE: 65391334			
JOB FAX: E-102			
JOB REV: 0			



[PURAGL] ENDWALL RAFTER TO ROOF PURLIN

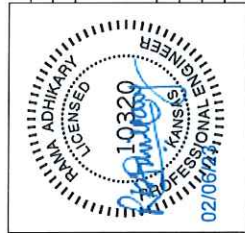


[RC013] ENDWALL COLUMN TO RAFTER AT PEAK SPLICE LOCATION

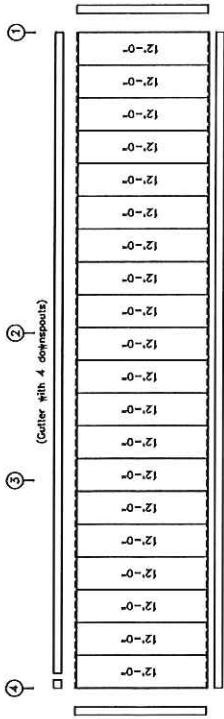


[WB002] MAINFRAME COLUMN TO WIND BENT FRAME

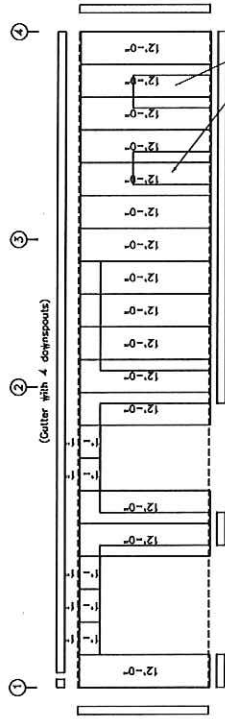
ALL A325 STRUCTURAL BOLT CONNECTIONS SHOWN IN THESE DETAILS HAVE STANDARD MINIMUM BOLT INFORMATION. FOR SPECIFIC BOLT QUANTITIES AND SIZES, REFER TO COMPONENT BOLT TABLES LOCATED ON FRAME AND WALL ELEVATION DWGS.



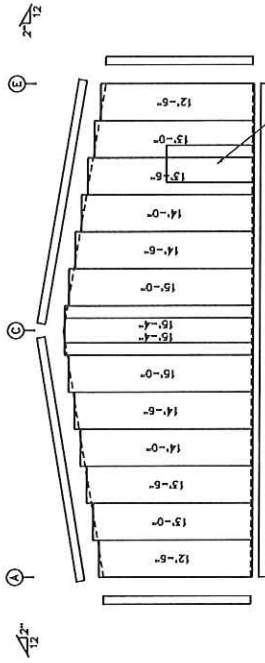
0	01/17/2023	For Construction	DESCRIPTION
REV	DATE		
MUELLER, INC.			
STEEL BUILDING SYSTEMS & COMPONENTS			
1913 Hutchins Ave. Ballinger, TX 78821			
(800) 527-1087			
DRAWING DESCRIPTION: ERECTION DETAILS			
SALESMAN:	Harold Gibroth	ENGINEER:	Harold Gibroth
SALES ADDRESS:	632552 SE 500 ROAD	CONTRACT NO.:	NO.16
City:	Booth	CHECKER:	LPH
State:	KS	DATE:	01/17/2023
Job #:	6539134	Draw #:	E104
Rev:	0		



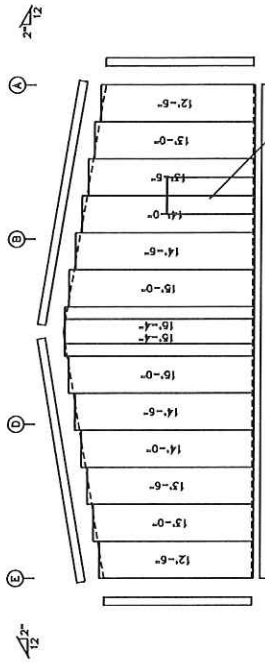
SIDEWALL SHEETING & TRIM: FRAME LINE A
 PANELS: 26 Co. R - DRB Deep River Blue



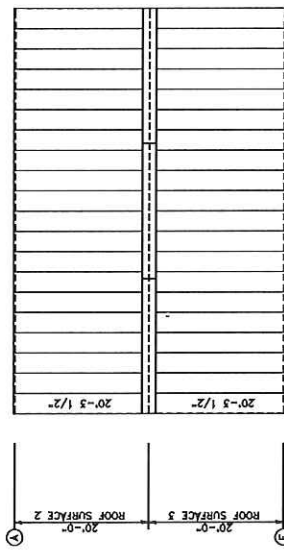
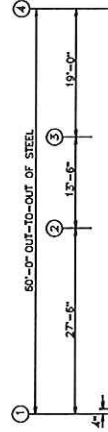
SIDEWALL SHEETING & TRIM: FRAME LINE E
 PANELS: 26 Co. R - DRB Deep River Blue



ENDWALL SHEETING & TRIM: FRAME LINE 1
 PANELS: 26 Co. R - DRB Deep River Blue



ENDWALL SHEETING & TRIM: FRAME LINE 4
 PANELS: 26 Co. R - DRB Deep River Blue



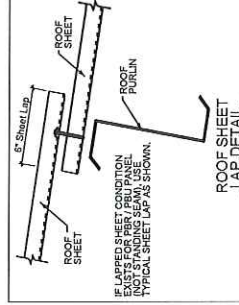
ROOF SHEETING PLAN
 PANELS: 26 Co. R - COP Copper

GENERAL NOTES:

CAUTION
 THE FOLLOWING MAXIMUM ADDITIONAL LINEAR FOOTAGE MEASURED
 FROM THE CENTERLINE OF PANELS MUST BE REMOVED FOR FIELD LOCATED
 FRAMED OPENINGS WITHOUT AFFECTING THE DIAPHRAGM'S STRENGTH
 OF THE PANELS.

RIGHT ENDWALL: 3

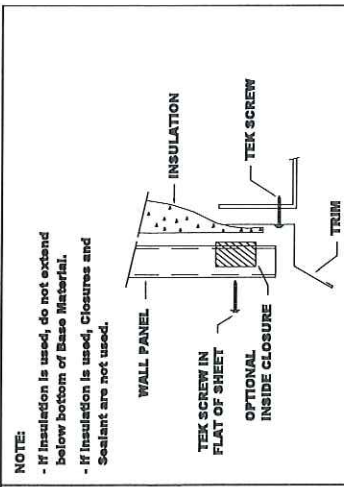
ROOF SLOPES GREATER THAN 1:12 REQUIRE ENDWALL
 PANELS BE FIELD CUT TO MATCH ROOF SLOPE.



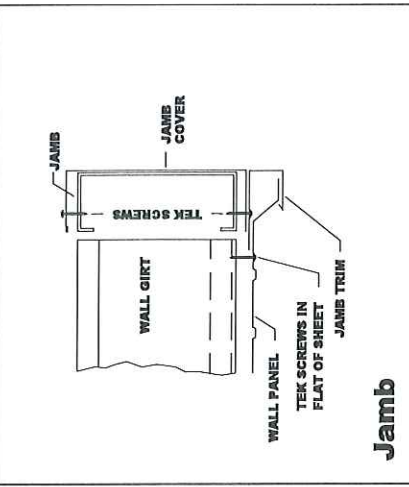
REV	DATE	DESCRIPTION
0	01/17/2023	For Construction

MUELLER, INC.
 STEEL BUILDING SYSTEMS & COMPONENTS
 1913 Hutchins Ave., Ballinger, TX 76821
 (800) 527-1087

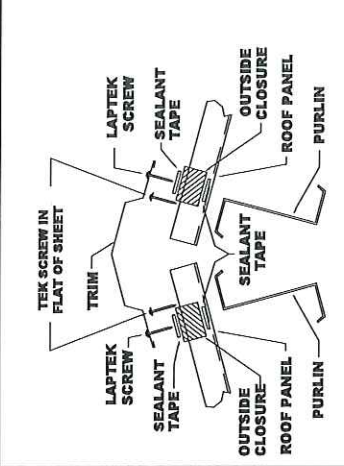
DRAWING DESCRIPTION: SHEETING DETAILS
 CHECKED BY: Eric Gilbreath
 SALES: Mike Booth
 ENGR: Eric Gilbreath
 PROJECT ADDRESS: 32552 SE 500 ROAD, Kincadee, KS 66039
 UPH: TJC
 SHEET NO: 01/17/2023
 DWG # 6539134
 REV: 0



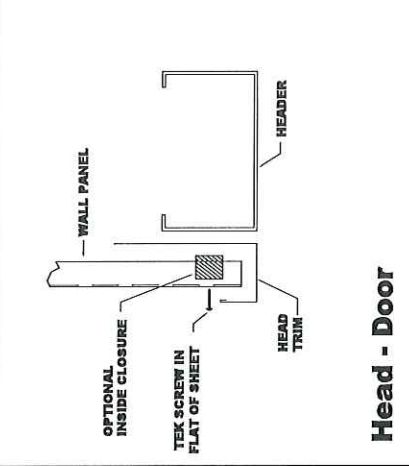
Base



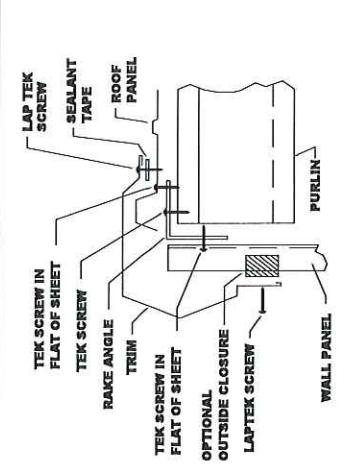
Jamb



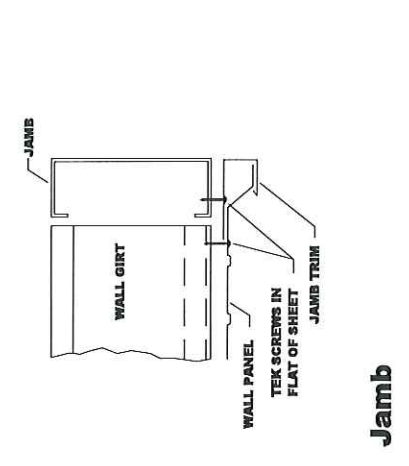
Ridge Roll



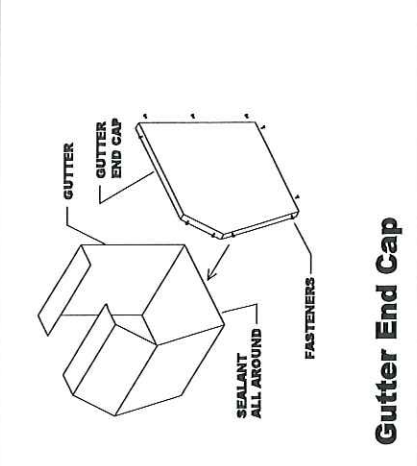
Head - Door



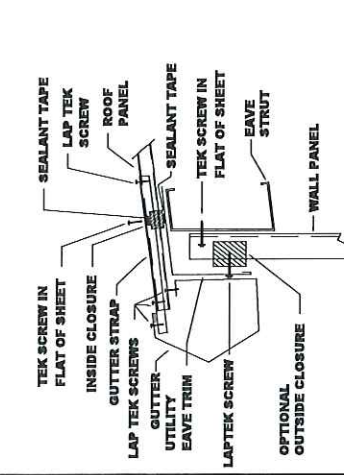
Rake



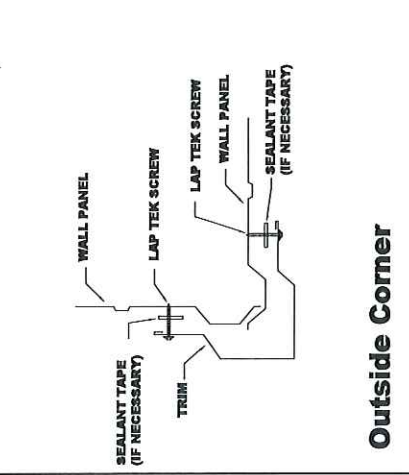
Jamb



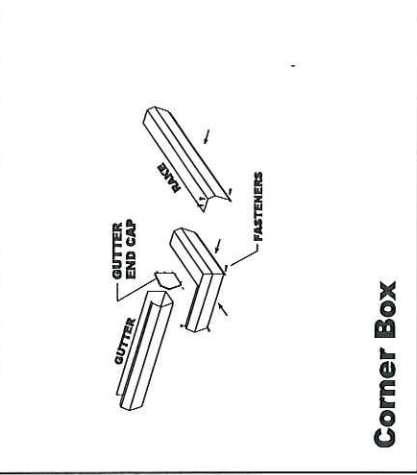
Gutter End Cap



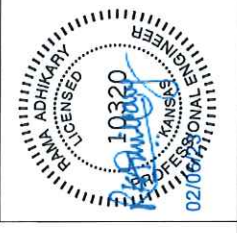
Gutter



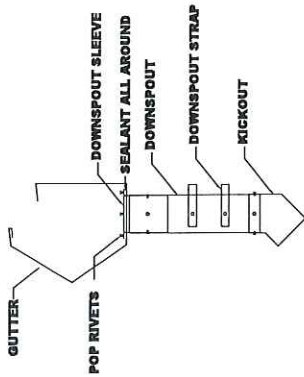
Outside Corner



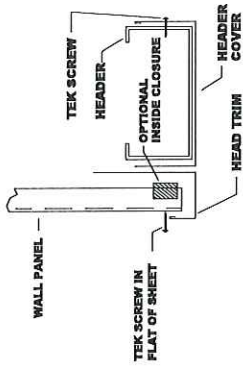
Corner Box



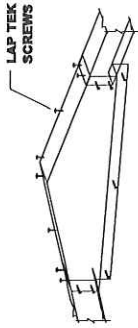
0	D/17/2023	For Construction
REV	DATE	DESCRIPTION
MUELLER, INC. STEEL BUILDING SYSTEMS & COMPONENTS 1913 Hutchins Ave. Ballinger, TX 76821 (800) 527-1087		
DRAWING DESCRIPTION		
TRIM DETAILS		
DESIGNED BY	ENGINEER	SCALE
Haseid Glibreth	Haseid Glibreth	1/8" = 1'-0"
SALESMAN	APPROVED FOR CONSTRUCTION	DATE
Mike Booth	01/17/2023	0
LP#	TLC	REV#
		T101
		0



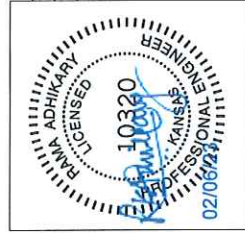
Downspout



Head Cover - Door



Peak Box



0	01/17/2023	For Construction	DESCRIPTION
REV	DATE		
MUELLER, INC. STEEL BUILDING SYSTEMS & COMPONENTS 1913 Hutchins Ave. Ballinger, TX 76821 (800) 527-1087			
DRAWING DESCRIPTION		ENGINEER	
TRIM DETAILS		Harold Glibreth	
SALESMAN		Harold Glibreth	
CHECKER		Mike Booth	
DATE		01/17/2023	
LPH		TLC	
JOB #		6539134	
REV #		T-102	
REV		0	

CHAPTER 3

TRUCKS

SECTION:

- 10-3-1: Truck Route
- 10-3-2: Designation Of Truck Routes
- 10-3-3: Restrictions
- 10-3-4: Penalty

10-3-1: **TRUCK ROUTE:** All trucks, tractors and semitrailers with over two (2) axles shall follow the marked truck routes; provided, however, that any such truck, tractor and semitrailer or trailer used for the purpose of making deliveries to or from any point in said city should follow the marked truck routes to a point nearest its destination and return to said truck routes therefrom by the shortest practical route. (Ord. 2217, 2-14-1973)

10-3-2: **DESIGNATION OF TRUCK ROUTES:** The following streets, roads, and avenues are designed truck routes within the city:

- (A) Sixth Avenue from its intersection with Maple Street (U.S. Highway 59) to the east boundary of the city; and
- (B) Thirteenth Avenue lying between Walnut and Vine Streets within the city. (Ord. 3089, 5-24-1994)

10-3-3: **RESTRICTIONS:**

(A) Main Street:

1. No semitrailer, pole trailer or any other combination of vehicles which includes a tractor and trailer shall be operated upon Main Street from said street's intersection with Sixth Avenue to its intersection with Thirteenth Avenue.

2. A commercial vehicle, as the same is defined by Kansas law or applicable regulation, may only be operated upon that part of Main Street from said street's intersection with Sixth Avenue to its intersection with Thirteenth Avenue, so long as its registered gross vehicle weight is not more than thirty five thousand (35,000) pounds, and so long as its operation thereon is not otherwise prohibited by this section. (Ord. 3686, 3-27-2007; amd. Ord. 3835, 9-28-2010)

(B) Homerun Drive: No truck or other commercial vehicle shall be operated upon the street commonly called and known as "Homerun Drive" within the city of Garnett. Appropriate signs shall be erected and maintained along said street right of way, including, but not limited to, said street's intersections with other streets or avenues of the city. Provided, however, adjacent premises to said street may be served. (Ord. 3835, 9-28-2010)

(C) Additional Regulations: The provisions of subsections (A) and (B) of this section shall be subject to the following:

1. Appropriate signs shall be posted on the affected part of such street to inform motorists of the provisions of this section.

2. Adjacent premises to the affected part of such street may be served. (Ord. 3686, 3-27-2007)

10-3-4: **PENALTY:** Violations hereof shall, upon conviction, be punished as provided in section 10-7-4 of this title. (Ord. 3686, 3-27-2007; amd. Ord. 3835, 9-28-2010)

DEPARTMENT	FUND	VENDOR NAME	DESCRIPTION	AMOUNT_
REVENUES	GENERAL	WILLIAMS, LINDA	REFUND OF PARTIAL DOG TAG	40.00_
			TOTAL:	40.00
GOVERNMENT ADMINISTRAT	GENERAL	DOLLAR GENERAL CORPORATION	ADMIN/THC SPLIT	52.65
		GARNETT POST OFFICE	APRIL 2023 UTILITY BILL MA	700.00
		GARNETT PUBLISHING, INC.	ANDERSON COUNTY RENEWAL	80.95
		GARNETT HOME CENTER	CITY HALL WATER HEATER REP	228.96
		HASTY AWARDS	RETIREMENT AWARD	12.95
		RYAN WALTER DBA	ADMIN SPLIT	8.75_
			TOTAL:	1,084.26
COMMUNITY DEVELOPMENT	GENERAL	DOLLAR GENERAL CORPORATION	ADMIN/THC SPLIT	20.90
		CINTAS FIRE PROTECTIOIN	THC INSPECTION EXTINGUISHE	267.97
		RYAN WALTER DBA	COM DEV SPLIT	5.00
			THC SPLIT	15.00
		WOLKEN PLBG. & ELECTRIC, INC.	THREAD NIPPLE/SHUT OFF VAL	34.84_
			TOTAL:	343.71
PARKS, RECREATION & CE	GENERAL	ANCHOR SALES & SERV CO, INC.	PARKS TIRES (4)	851.00
			PARKS TIRES (4)	456.16
		BSN SPORTS, LLC	SOCCER SUPPLIES	1,899.88
			REFEREE SHIRT RETURN	692.86-
		D & S SANITATION LLC	HOLIDAY TANK-PORTABLE TOIL	85.00
		GERKEN RENT-ALL, INC	NORTH LAKE HOLDING TANK (5	357.50
		HASTY AWARDS	PARKS 10K RUNWALK	271.89
		CINTAS FIRE PROTECTIOIN	PARKS INSPECTION EXTINGUIS	131.85
		MID AMERICAN RESEARCH CHEMICAL	WEED KILLER/SPRAY PAINT	1,070.06
		PROFESSIONAL TURF PRODUCTS	PARKS TRUCK	2,631.88
		RYAN WALTER DBA	REC CENTER SPLIT	30.00
			PARKS SPLIT	30.00
			DEPOT PARK SPLIT	30.00
		WOLKEN GOODYEAR, INC.	LABOR MOUNT 2 TIRES	18.75
		KLEHAMMER, BRENDA JE'NELLE	FEB YOGA 15 CLASSES @ 15.0	225.00_
			TOTAL:	7,396.11
STREET & STORMWATER	GENERAL	BRUMMEL FARM SERVICE	SACKRETE (5)	35.00
		DOLLAR GENERAL CORPORATION	DISH SOAP/TOOTHBRUSHES	3.51
		54 REBUILDERS	SIDE VIEW MIRROR	65.00
		HAMPEL OIL DISTRIBUTORS, INC.	MOBIL DELVAC EXTEND LIFE50	617.58
			STREET FUEL SPLIT	14.37
		WKI OPERATIONS, DBA WICHITA KENWORTH	GLOVES L,XL	229.95
			OIL DRY 50#	99.90
			LED WARNING BEACON	189.00
		SNAP-ON CREDIT	MARCH SUBSCRIPTION	46.75
		B & W CUSTOM TRUCK BEDS INC	HITCH KIT DODGE 3500	799.00
		NATIONAL SIGN COMPANY	AMBER LIGHT BAR/CUSTOM SIG	298.00
			AMBER LIGHT BAR/CUSTOM SIG	96.00
		RYAN WALTER DBA	STREET SPLIT	15.00_
			TOTAL:	2,509.06
MUNICIPAL AIRPORT	AIRPORT	CINTAS FIRE PROTECTIOIN	AIRPORT INSPECTION EXTINGU	259.44
		LEO'S AUTO SUPPLY, INC.	AIRPORT OIL FILTER	16.25_
			TOTAL:	275.69
LIBRARY	LIBRARY	CINTAS FIRE PROTECTIOIN	LIBRARY INSPECTION EXTINGU	436.79
		RUESCHHOFF LOCKSMITH & SECURITY	ALARM MONITORING/WIRELESS	112.35

DEPARTMENT	FUND	VENDOR NAME	DESCRIPTION	AMOUNT_
		RYAN WALTER DBA	LIBRARY SPLIT	30.00
		KANSAS CITY STAR	LIBRARY RENEWAL	671.09_
			TOTAL:	1,250.23
FIRE DEPARTMENT	PUBLIC SAFETY	APPARATUS SERVICES, L.L.C.	FIRE-PIERCE REPAIRS	196.87
		MFA OIL CO - PETRO CARD 24	FIRE DIESEL	99.60
		RYAN WALTER DBA	FIRE SPLIT	30.00_
			TOTAL:	326.47
POLICE DEPARTMENT	PUBLIC SAFETY	MFA OIL CO - PETRO CARD 24	POLICE FUEL	1,190.36
		PUBLIC SAFETY UPFITTERS	UNIFORM ACCESSORIES	1,774.77
		RYAN WALTER DBA	POLICE SPLIT	15.00
		SAINT LUKES HEALTH SYSTEM	PRE EMPLOY SCREEN-NAYLOR	65.00_
			TOTAL:	3,045.13
ELECTRIC PRODUCTION	ELECTRIC	ATCO INTERNATIONAL	GLOVES (BX 100) 3 QTY	75.00
		BRIGHTSPEED COMMUNICATIONS	APRIL ACCESS BILLING	619.64
		HAMPEL OIL DISTRIBUTORS, INC.	ELEC PROD FUEL SPLIT	14.37
		CINTAS FIRE PROTECTIOIN	POWER PLANT INSPECT EXTING	823.11
			POWER PLANT HALOTRON EXTIN	1,990.86
		LEO'S AUTO SUPPLY, INC.	SOCKET SET	79.95
		MID-AMERICA HYDRAULIC REPAIR, INC.	89' ALTEC REPAIR	750.00
		RYAN WALTER DBA	POWER PLANT SPLIT	15.00_
			TOTAL:	4,367.93
ELECTRIC DISTRIBUTION	ELECTRIC	BORDER STATES INDUSTRIES, INC	PHOTOCELL FAIL OFF (24)	327.11
		HAMPEL OIL DISTRIBUTORS, INC.	ELEC DIST FUEL SPLIT	14.37
			ELEC SPLIT	107.37
		RYAN WALTER DBA	ELEC DIST SPLIT	7.50
		STANION WHOLESALE ELECT. CO.	TOOLS	40.70
			ELEC DISTRIBUTION	200.40_
			TOTAL:	697.45
GAS	GAS	BORDER STATES INDUSTRIES, INC	DB SPLICE BULK GAS SPLIT	146.05
		DC & B SUPPLY	VALVE CLEANER/LUBE SEALANT	403.92
		HAMPEL OIL DISTRIBUTORS, INC.	GAS FUEL SPLIT	14.37
		LUNDSCO	LG A TORK TOWELS	34.72
		RYAN WALTER DBA	GAS SPLIT	7.50_
			TOTAL:	606.56
SANITATION	SANITATION	GARNETT HOME CENTER	FIBER DISC FOR DUMPSTERS	17.99
		HAMPEL OIL DISTRIBUTORS, INC.	REFUSE FUEL SPLIT	14.37
			REFUSE SPLIT	107.37
		RYAN WALTER DBA	TRASH SPLIT	7.50_
			TOTAL:	147.23
WASTEWATER	WASTEWATER	KS. DEPT. OF HEALTH & ENVIRON.	KDHE WASTEWR OPER RENEWAL	20.00_
			TOTAL:	20.00
WATER	WATER	ACCURATE ENVIRONMENTAL LLC	CHEMICALS	941.02
		BORDER STATES INDUSTRIES, INC	DB SPLICE BULK WTR SPLIT	146.06
		HAMPEL OIL DISTRIBUTORS, INC.	WATER/WATER PLANT FUEL SPL	28.72
		HAWKINS, INC.	CHEMCIALS	15,274.71
		CORE & MAIN	9 SPLIT MEGALUG PVC	246.88
		CINTAS FIRE PROTECTIOIN	WATER - INSPECT EXTINGUISH	342.55
		LEO'S AUTO SUPPLY, INC.	SOCKET SET	119.95

DEPARTMENT	FUND	VENDOR NAME	DESCRIPTION	AMOUNT_
		OLATHE WINWATER WORKS CO.	ADAPTER SHELLS	727.00
			PVCXMPY STR ADPT	1,582.00
			LEAD FLANGE	46.00
			STOCK/CREDIT INV 179236-0	832.00
			STOCK/CREDIT INV 179236-0	885.00-
			STOCK/CREDIT INV 179236-0	292.00
			STOCK/CREDIT INV 179236-0	1,752.00
			STOCK/CREDIT INV 179236-0	3,280.00
			SETTER	612.00
			15CLAY/15PLAS GASKET PIPE	757.44
		RYAN WALTER DBA	WATER SPLIT	7.50
			WATER PLANT SPLIT	15.00
		STANION WHOLESALE ELECT. CO.	WATER DISTRIBUTION	221.74_
			TOTAL:	26,339.57
ECONOMIC DEVELOPMENT	ECONOMIC DEVELOPME	RYAN WALTER DBA	ECO DEV SPLIT	1.25
		TURNIPSEED, JULIE	MILEAGE REIMB COLONY	23.58_
			TOTAL:	24.83
PARKSIDE #1	PARKSIDE #1	ANDERSON COUNTY SOLID WASTE	PKSIDE 1 TIRE DISPOSAL SPL	5.33
		ANCHOR SALES & SERV CO, INC.	PKSIDE 1 TIRE SPLIT	84.29
		C.E.S.	PKSIDE 1 SPLIT	355.00
		DIGITAL CONNECTIONS, INC.	PKSIDE 1 COPIER SPLIT	99.20
		EMC INSURANCE COMPANY	PKSIDE 1 EMC SPLIT	33.34
		HD SUPPLY,INC	PKSIDE 1 SPLIT	15.77
			PKSIDE 1 GARBG DISP SINK S	6.48_
			TOTAL:	599.41
PARKSIDE #2	PARKSIDE #2	ANDERSON COUNTY SOLID WASTE	PKSIDE 2 TIRE DISPOSAL SPL	5.34
		ANCHOR SALES & SERV CO, INC.	PKSIDE 2 TIRE SPLIT	84.29
		C.E.S.	PKSIDE 2 SPLIT	355.00
		DIGITAL CONNECTIONS, INC.	PKSIDE 2 COPIER SPLIT	99.20
		EMC INSURANCE COMPANY	PKSIDE 2 EMC SPLIT	33.34
		HD SUPPLY,INC	PKSIDE 2 SPLIT	15.77
			PKSIDE 2 GARBG DISP SINK S	6.48_
			TOTAL:	599.42
PARK PLAZA NORTH	PARK PLAZA NORTH	ANDERSON COUNTY SOLID WASTE	PPN TIRE DISPOSAL SPLIT	5.33
		ANCHOR SALES & SERV CO, INC.	PPN TIRE SPLIT	84.30
		C.E.S.	PPN SPLIT	355.00
		DIGITAL CONNECTIONS, INC.	PPN COPIER SPLIT	99.20
		EMC INSURANCE COMPANY	PPN EMC SPLIT	33.32
		HD SUPPLY,INC	PPN 2 GARBG DISP SINK SPLI	6.49_
			TOTAL:	583.64

DEPARTMENT	FUND	VENDOR NAME	DESCRIPTION	AMOUNT_
===== FUND TOTALS =====				
	101	GENERAL		11,373.14
	102	AIRPORT		275.69
	104	LIBRARY		1,250.23
	105	PUBLIC SAFETY		3,371.60
	109	ELECTRIC		5,065.38
	110	GAS		606.56
	111	SANITATION		147.23
	112	WASTEWATER		20.00
	113	WATER		26,339.57
	114	ECONOMIC DEVELOPMENT		24.83
	115	PARKSIDE #1		599.41
	116	PARKSIDE #2		599.42
	117	PARK PLAZA NORTH		583.64

		GRAND TOTAL:		50,256.70

DEPARTMENT	FUND	VENDOR NAME	DESCRIPTION	AMOUNT_
REVENUES	GENERAL	WILLIAMS, LINDA	REFUND OF PARTIAL DOG TAG	40.00_
			TOTAL:	40.00
GOVERNMENT ADMINISTRAT	GENERAL	DOLLAR GENERAL CORPORATION	ADMIN/THC SPLIT	52.65
		GARNETT POST OFFICE	APRIL 2023 UTILITY BILL MA	700.00
		GARNETT PUBLISHING, INC.	ANDERSON COUNTY RENEWAL	80.95
		GARNETT HOME CENTER	CITY HALL WATER HEATER REP	228.96
		HASTY AWARDS	RETIREMENT AWARD	12.95
		RYAN WALTER DBA	ADMIN SPLIT	8.75_
			TOTAL:	1,084.26
COMMUNITY DEVELOPMENT	GENERAL	DOLLAR GENERAL CORPORATION	ADMIN/THC SPLIT	20.90
		CINTAS FIRE PROTECTIOIN	THC INSPECTION EXTINGUISHE	267.97
		RYAN WALTER DBA	COM DEV SPLIT	5.00
			THC SPLIT	15.00
		WOLKEN PLBG. & ELECTRIC, INC.	THREAD NIPPLE/SHUT OFF VAL	34.84_
			TOTAL:	343.71
PARKS, RECREATION & CE	GENERAL	ANCHOR SALES & SERV CO, INC.	PARKS TIRES (4)	851.00
			PARKS TIRES (4)	456.16
		BSN SPORTS, LLC	SOCCER SUPPLIES	1,899.88
			REFEREE SHIRT RETURN	692.86-
		D & S SANITATION LLC	HOLIDAY TANK-PORTABLE TOIL	85.00
		GERKEN RENT-ALL, INC	NORTH LAKE HOLDING TANK (5	357.50
		HASTY AWARDS	PARKS 10K RUNWALK	271.89
		CINTAS FIRE PROTECTIOIN	PARKS INSPECTION EXTINGUIS	131.85
		MID AMERICAN RESEARCH CHEMICAL	WEED KILLER/SPRAY PAINT	1,070.06
		PROFESSIONAL TURF PRODUCTS	PARKS TRUCK	2,631.88
		RYAN WALTER DBA	REC CENTER SPLIT	30.00
			PARKS SPLIT	30.00
			DEPOT PARK SPLIT	30.00
		WOLKEN GOODYEAR, INC.	LABOR MOUNT 2 TIRES	18.75
		KLEHAMMER, BRENDA JE'NELLE	FEB YOGA 15 CLASSES @ 15.0	225.00_
			TOTAL:	7,396.11
STREET & STORMWATER	GENERAL	BRUMMEL FARM SERVICE	SACKRETE (5)	35.00
		DOLLAR GENERAL CORPORATION	DISH SOAP/TOOTHBRUSHES	3.51
		54 REBUILDERS	SIDE VIEW MIRROR	65.00
		HAMPEL OIL DISTRIBUTORS, INC.	MOBIL DELVAC EXTEND LIFE50	617.58
			STREET FUEL SPLIT	14.37
		WKI OPERATIONS, DBA WICHITA KENWORTH	GLOVES L,XL	229.95
			OIL DRY 50#	99.90
			LED WARNING BEACON	189.00
		SNAP-ON CREDIT	MARCH SUBSCRIPTION	46.75
		B & W CUSTOM TRUCK BEDS INC	HITCH KIT DODGE 3500	799.00
		NATIONAL SIGN COMPANY	AMBER LIGHT BAR/CUSTOM SIG	298.00
			AMBER LIGHT BAR/CUSTOM SIG	96.00
		RYAN WALTER DBA	STREET SPLIT	15.00_
			TOTAL:	2,509.06
MUNICIPAL AIRPORT	AIRPORT	CINTAS FIRE PROTECTIOIN	AIRPORT INSPECTION EXTINGU	259.44
		LEO'S AUTO SUPPLY, INC.	AIRPORT OIL FILTER	16.25_
			TOTAL:	275.69
LIBRARY	LIBRARY	CINTAS FIRE PROTECTIOIN	LIBRARY INSPECTION EXTINGU	436.79
		RUESCHHOFF LOCKSMITH & SECURITY	ALARM MONITORING/WIRELESS	112.35

DEPARTMENT	FUND	VENDOR NAME	DESCRIPTION	AMOUNT_
		RYAN WALTER DBA	LIBRARY SPLIT	30.00
		KANSAS CITY STAR	LIBRARY RENEWAL	671.09_
			TOTAL:	1,250.23
FIRE DEPARTMENT	PUBLIC SAFETY	APPARATUS SERVICES, L.L.C.	FIRE-PIERCE REPAIRS	196.87
		MFA OIL CO - PETRO CARD 24	FIRE DIESEL	99.60
		RYAN WALTER DBA	FIRE SPLIT	30.00_
			TOTAL:	326.47
POLICE DEPARTMENT	PUBLIC SAFETY	MFA OIL CO - PETRO CARD 24	POLICE FUEL	1,190.36
		PUBLIC SAFETY UPFITTERS	UNIFORM ACCESSORIES	1,774.77
		RYAN WALTER DBA	POLICE SPLIT	15.00
		SAINT LUKES HEALTH SYSTEM	PRE EMPLOY SCREEN-NAYLOR	65.00_
			TOTAL:	3,045.13
ELECTRIC PRODUCTION	ELECTRIC	ATCO INTERNATIONAL	GLOVES (BX 100) 3 QTY	75.00
		BRIGHTSPEED COMMUNICATIONS	APRIL ACCESS BILLING	619.64
		HAMPEL OIL DISTRIBUTORS, INC.	ELEC PROD FUEL SPLIT	14.37
		CINTAS FIRE PROTECTIOIN	POWER PLANT INSPECT EXTING	823.11
			POWER PLANT HALOTRON EXTIN	1,990.86
		LEO'S AUTO SUPPLY, INC.	SOCKET SET	79.95
		MID-AMERICA HYDRAULIC REPAIR, INC.	89' ALTEC REPAIR	750.00
		RYAN WALTER DBA	POWER PLANT SPLIT	15.00_
			TOTAL:	4,367.93
ELECTRIC DISTRIBUTION	ELECTRIC	BORDER STATES INDUSTRIES, INC	PHOTOCELL FAIL OFF (24)	327.11
		HAMPEL OIL DISTRIBUTORS, INC.	ELEC DIST FUEL SPLIT	14.37
			ELEC SPLIT	107.37
		RYAN WALTER DBA	ELEC DIST SPLIT	7.50
		STANION WHOLESALE ELECT. CO.	TOOLS	40.70
			ELEC DISTRIBUTION	200.40_
			TOTAL:	697.45
GAS	GAS	BORDER STATES INDUSTRIES, INC	DB SPLICE BULK GAS SPLIT	146.05
		DC & B SUPPLY	VALVE CLEANER/LUBE SEALANT	403.92
		HAMPEL OIL DISTRIBUTORS, INC.	GAS FUEL SPLIT	14.37
		LUNDSCO	LG A TORK TOWELS	34.72
		RYAN WALTER DBA	GAS SPLIT	7.50_
			TOTAL:	606.56
SANITATION	SANITATION	GARNETT HOME CENTER	FIBER DISC FOR DUMPSTERS	17.99
		HAMPEL OIL DISTRIBUTORS, INC.	REFUSE FUEL SPLIT	14.37
			REFUSE SPLIT	107.37
		RYAN WALTER DBA	TRASH SPLIT	7.50_
			TOTAL:	147.23
WASTEWATER	WASTEWATER	KS. DEPT. OF HEALTH & ENVIRON.	KDHE WASTEWTR OPER RENEWAL	20.00_
			TOTAL:	20.00
WATER	WATER	ACCURATE ENVIRONMENTAL LLC	CHEMICALS	941.02
		BORDER STATES INDUSTRIES, INC	DB SPLICE BULK WTR SPLIT	146.06
		HAMPEL OIL DISTRIBUTORS, INC.	WATER/WATER PLANT FUEL SPL	28.72
		HAWKINS, INC.	CHEMCIALS	15,274.71
		CORE & MAIN	9 SPLIT MEGALUG PVC	246.88
		CINTAS FIRE PROTECTIOIN	WATER - INSPECT EXTINGUISH	342.55
		LEO'S AUTO SUPPLY, INC.	SOCKET SET	119.95

DEPARTMENT	FUND	VENDOR NAME	DESCRIPTION	AMOUNT_
		OLATHE WINWATER WORKS CO.	ADAPTER SHELLS	727.00
			PVCXMPY STR ADPT	1,582.00
			LEAD FLANGE	46.00
			STOCK/CREDIT INV 179236-0	832.00
			STOCK/CREDIT INV 179236-0	885.00-
			STOCK/CREDIT INV 179236-0	292.00
			STOCK/CREDIT INV 179236-0	1,752.00
			STOCK/CREDIT INV 179236-0	3,280.00
			SETTER	612.00
			15CLAY/15PLAS GASKET PIPE	757.44
		RYAN WALTER DBA	WATER SPLIT	7.50
			WATER PLANT SPLIT	15.00
		STANION WHOLESALE ELECT. CO.	WATER DISTRIBUTION	221.74_
			TOTAL:	26,339.57
ECONOMIC DEVELOPMENT	ECONOMIC DEVELOPME	RYAN WALTER DBA	ECO DEV SPLIT	1.25
		TURNIPSEED, JULIE	MILEAGE REIMB COLONY	23.58_
			TOTAL:	24.83
PARKSIDE #1	PARKSIDE #1	ANDERSON COUNTY SOLID WASTE	PKSIDE 1 TIRE DISPOSAL SPL	5.33
		ANCHOR SALES & SERV CO, INC.	PKSIDE 1 TIRE SPLIT	84.29
		C.E.S.	PKSIDE 1 SPLIT	355.00
		DIGITAL CONNECTIONS, INC.	PKSIDE 1 COPIER SPLIT	99.20
		EMC INSURANCE COMPANY	PKSIDE 1 EMC SPLIT	33.34
		HD SUPPLY,INC	PKSIDE 1 SPLIT	15.77
			PKSIDE 1 GARBG DISP SINK S	6.48_
			TOTAL:	599.41
PARKSIDE #2	PARKSIDE #2	ANDERSON COUNTY SOLID WASTE	PKSIDE 2 TIRE DISPOSAL SPL	5.34
		ANCHOR SALES & SERV CO, INC.	PKSIDE 2 TIRE SPLIT	84.29
		C.E.S.	PKSIDE 2 SPLIT	355.00
		DIGITAL CONNECTIONS, INC.	PKSIDE 2 COPIER SPLIT	99.20
		EMC INSURANCE COMPANY	PKSIDE 2 EMC SPLIT	33.34
		HD SUPPLY,INC	PKSIDE 2 SPLIT	15.77
			PKSIDE 2 GARBG DISP SINK S	6.48_
			TOTAL:	599.42
PARK PLAZA NORTH	PARK PLAZA NORTH	ANDERSON COUNTY SOLID WASTE	PPN TIRE DISPOSAL SPLIT	5.33
		ANCHOR SALES & SERV CO, INC.	PPN TIRE SPLIT	84.30
		C.E.S.	PPN SPLIT	355.00
		DIGITAL CONNECTIONS, INC.	PPN COPIER SPLIT	99.20
		EMC INSURANCE COMPANY	PPN EMC SPLIT	33.32
		HD SUPPLY,INC	PPN 2 GARBG DISP SINK SPLI	6.49_
			TOTAL:	583.64

DEPARTMENT	FUND	VENDOR NAME	DESCRIPTION	AMOUNT_
===== FUND TOTALS =====				
	101	GENERAL		11,373.14
	102	AIRPORT		275.69
	104	LIBRARY		1,250.23
	105	PUBLIC SAFETY		3,371.60
	109	ELECTRIC		5,065.38
	110	GAS		606.56
	111	SANITATION		147.23
	112	WASTEWATER		20.00
	113	WATER		26,339.57
	114	ECONOMIC DEVELOPMENT		24.83
	115	PARKSIDE #1		599.41
	116	PARKSIDE #2		599.42
	117	PARK PLAZA NORTH		583.64

		GRAND TOTAL:		50,256.70

TOTAL PAGES: 4

BILLS: \$ 50,256.70
 PAYROLL: \$112,538.07
 TOTAL: \$162,794.77